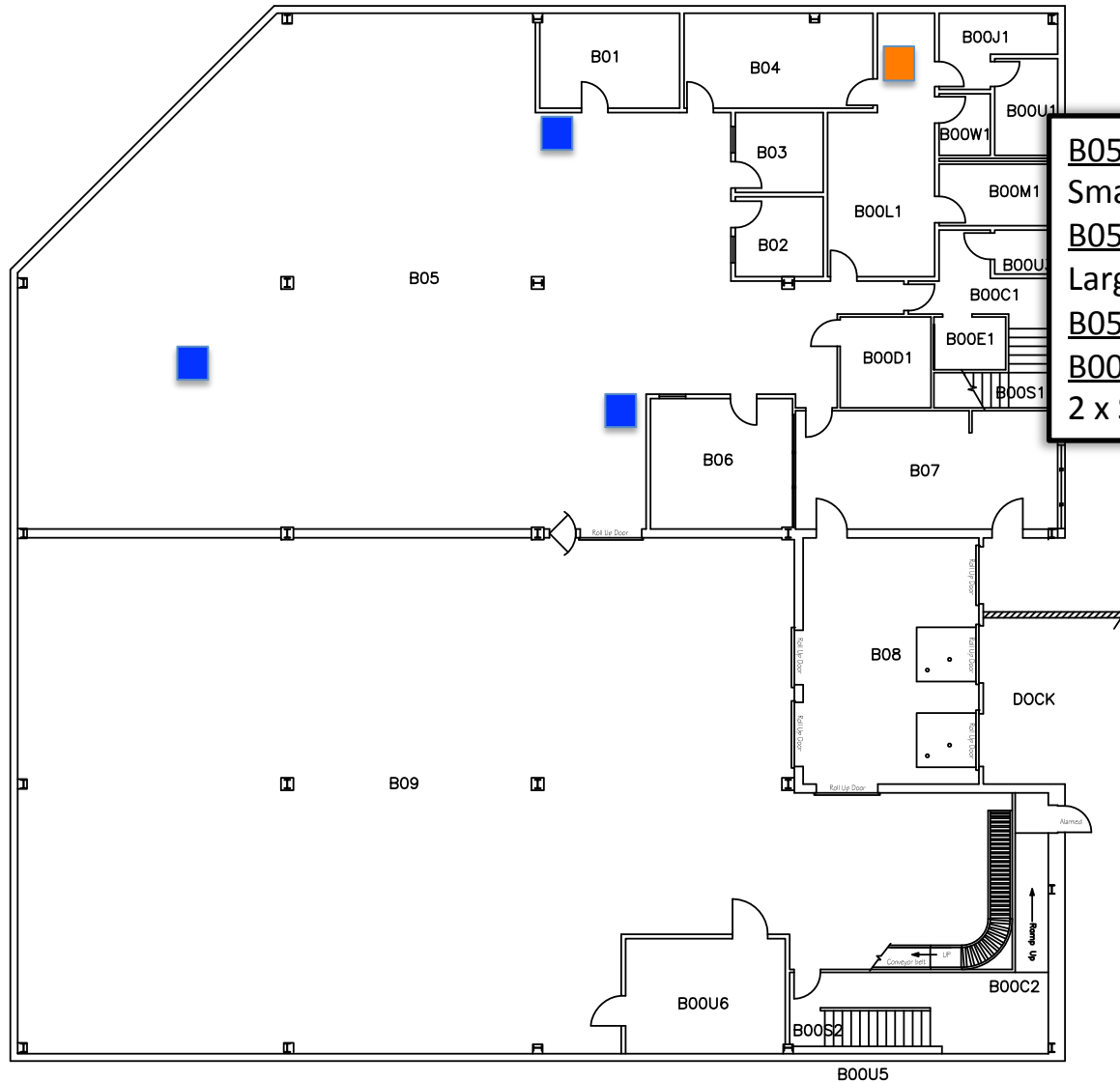


Bookstore Basement

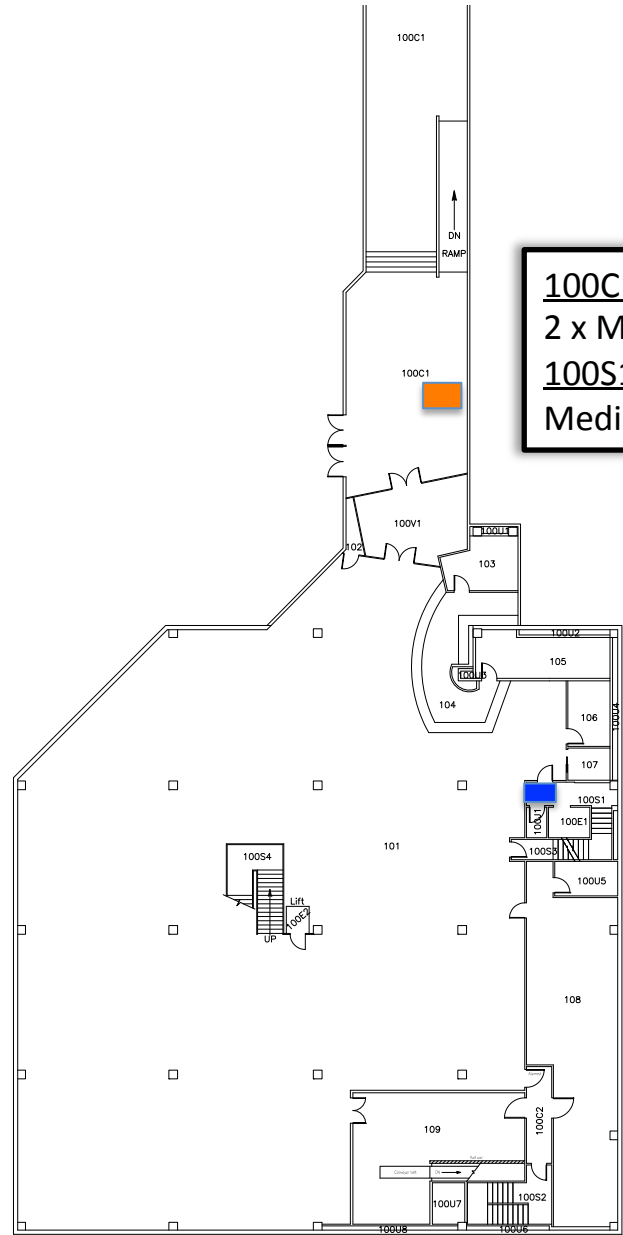


B05 (Outside of B06):
 Small bin (paper)
B05 (Back of room):
 Large rolling cart (paper)
B05 (Outside of B01)
B00L1 (Kitchen):
 2 x Small bin (plastic/can)

 = Mixed Paper Recycle Bin

 = Plastic and Can Recycle Bin

1st floor Bookstore



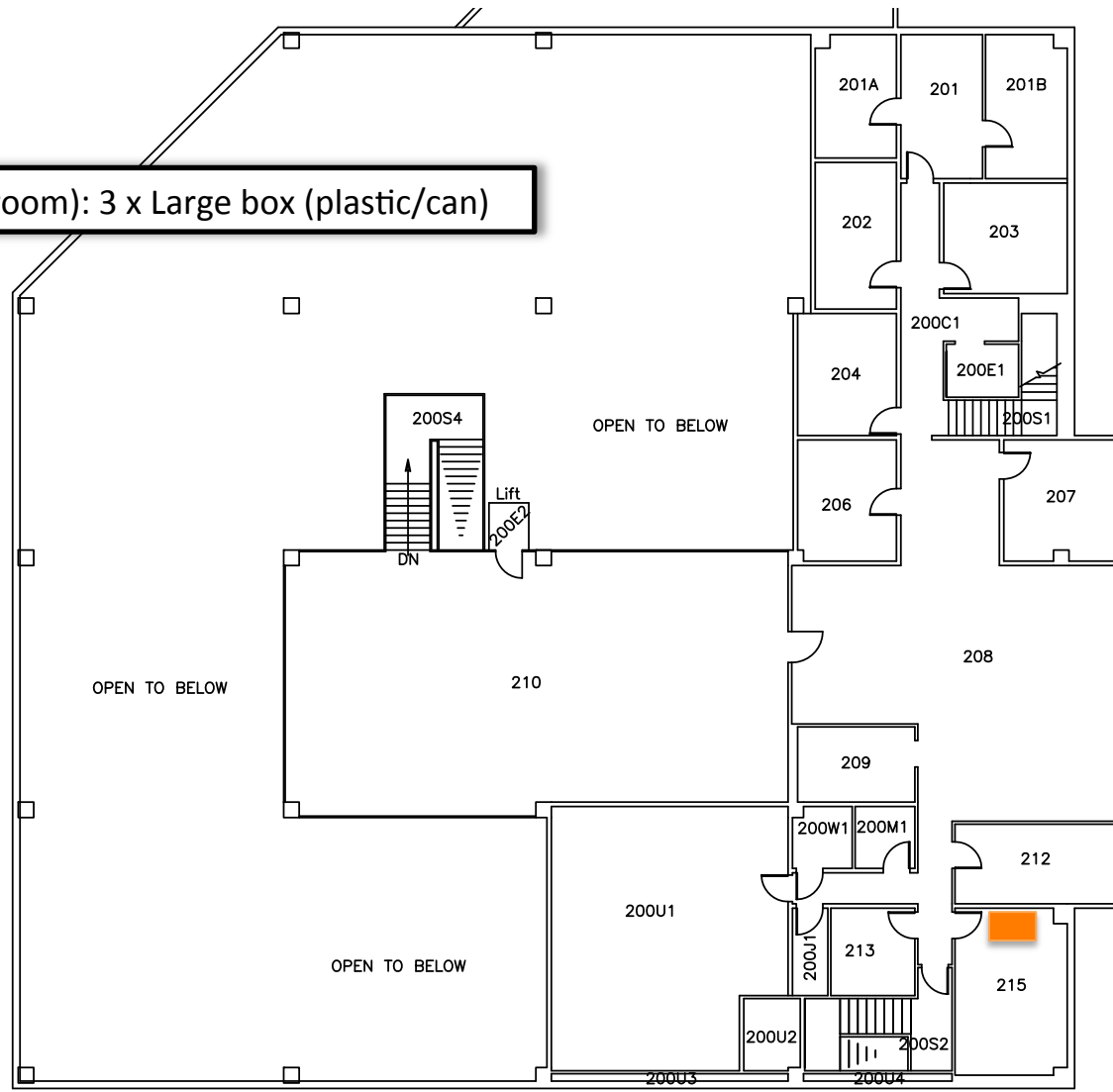
100C1 (Next to vending machine):
2 x Medium green bin (plastic/can)
100S1 (In front of Elevator):
Medium bin (paper)

 = Mixed Paper Recycle Bin

 = Plastic and Can Recycle Bin

2nd floor bookstore

215 (Break room): 3 x Large box (plastic/can)



 = Plastic and Can Recycle Bin