

# PLANNING AHEAD

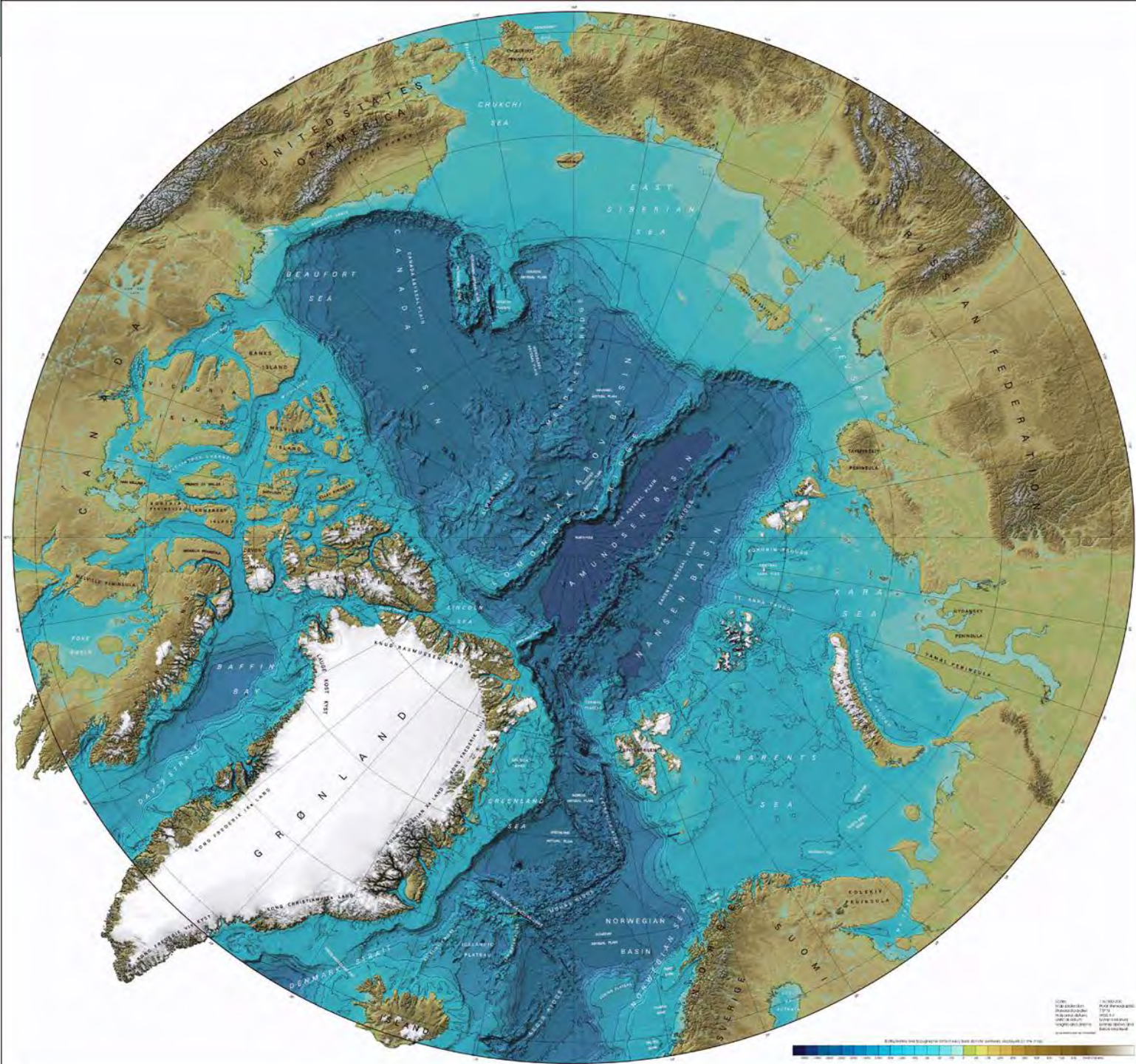
---

**Can Alaska Drive Integrated Arctic Management, Curtail Federal Overreach and Safeguard the Country's Longest Coastline?**

Professor Betsy Baker – University of Washington School of Law  
Duke/UAA Alaska Law Review Symposium  
Anchorage, AK October 16, 2014

# IBCAO

International  
Bathymetric  
Chart of the  
Arctic Ocean

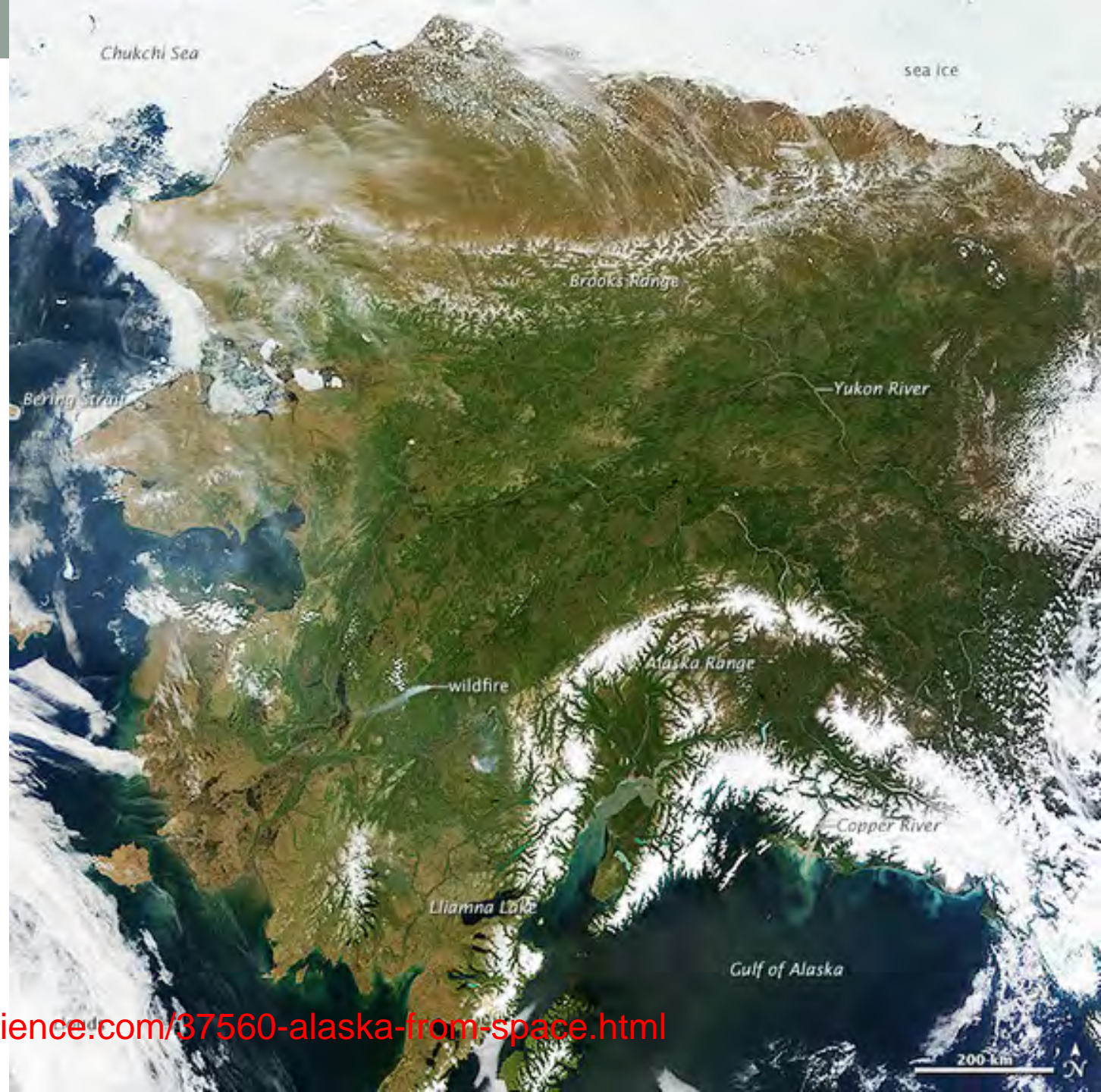




Some of

Alaska from Space  
June 17, 2013

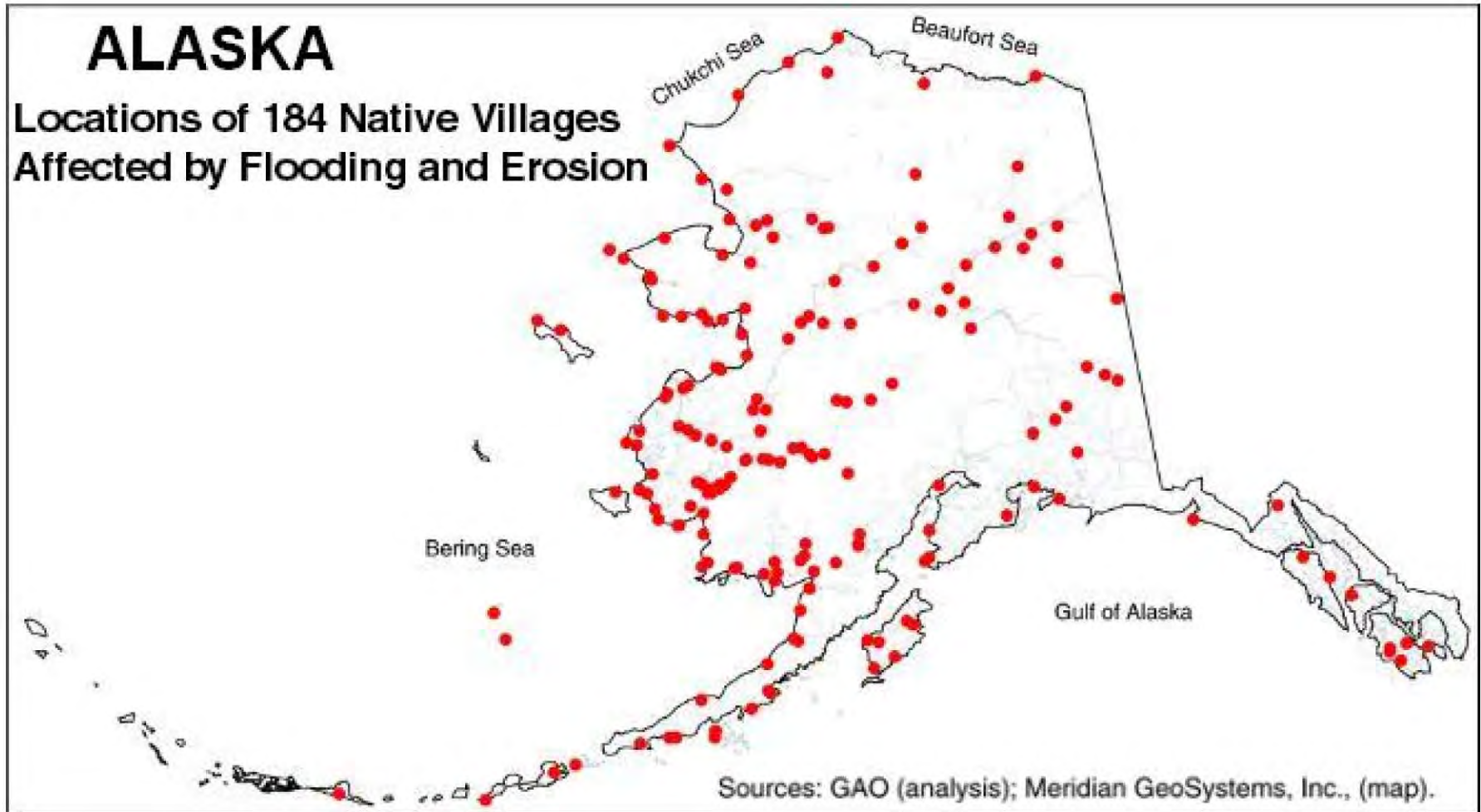
Credit:  
NASA Earth Observatory



<http://www.livescience.com/37560-alaska-from-space.html>

# ALASKA

**Locations of 184 Native Villages  
Affected by Flooding and Erosion**

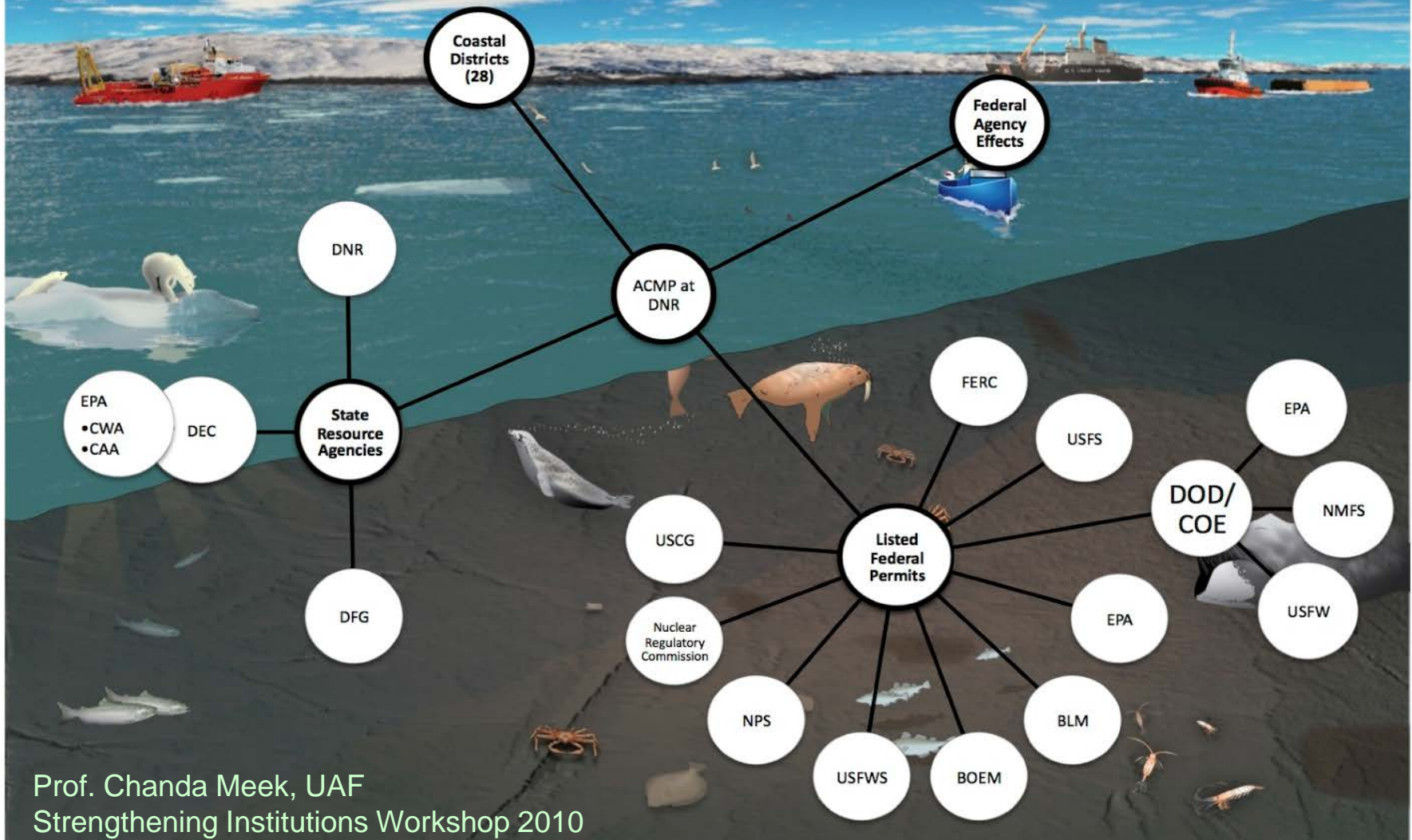


<https://feww.files.wordpress.com/2013/09/map-of-alaska.jpg>



# Alaska Ocean Management ~~at Present~~

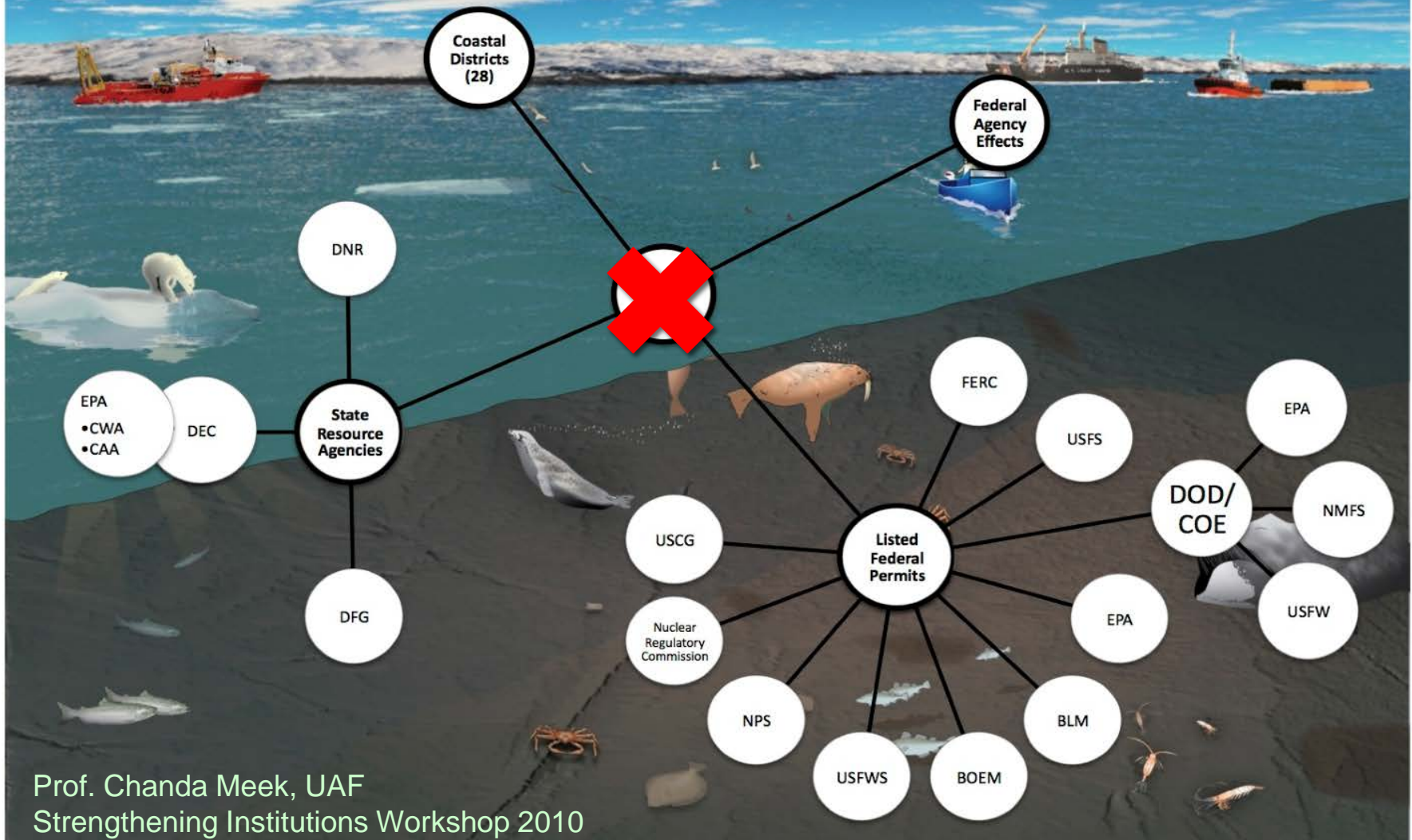
2010



Prof. Chanda Meek, UAF  
Strengthening Institutions Workshop 2010

# Alaska Ocean Management ~~at Present~~

2014



Prof. Chanda Meek, UAF  
Strengthening Institutions Workshop 2010

## Campaign finance

### Support

The following are the top 5 contributions that were made toward the effort in favor of Ballot Measure 2:<sup>[26]</sup>

Donor	Amount
North Slope Borough	\$15,137.97
Bristol Bay Native Corp	\$10,000
Robert Gillam, CEO, McKinley Capital Management	\$10,000
ASEA/AFSCME Local 52pac, Union PAC	\$5,000
Municipal of Skagway	\$2,000

**BALLOT MEASURE 2, 2012**  
**to create AK Coastal Zone**  
**Management Act failed**  
**38% in favor**  
**62% against**

### Opposition

The following are the top 5 contributions that were made in opposition of Ballot Measure 2:<sup>[27]</sup>

Donor	Amount
Alaska Miners Association	\$158,145.96
Shell	\$150,000
Alaska Oil and Gas Association	\$100,266.34
Fairbanks Gold Mining Inc. and Donlin Gold	\$75,000 (each)
Resource Development Council	\$57,790

Total campaign cash 🗳️	
👍 Support:	\$63,688.86
👎 Opposition:	\$767,995.31



### Media endorsements

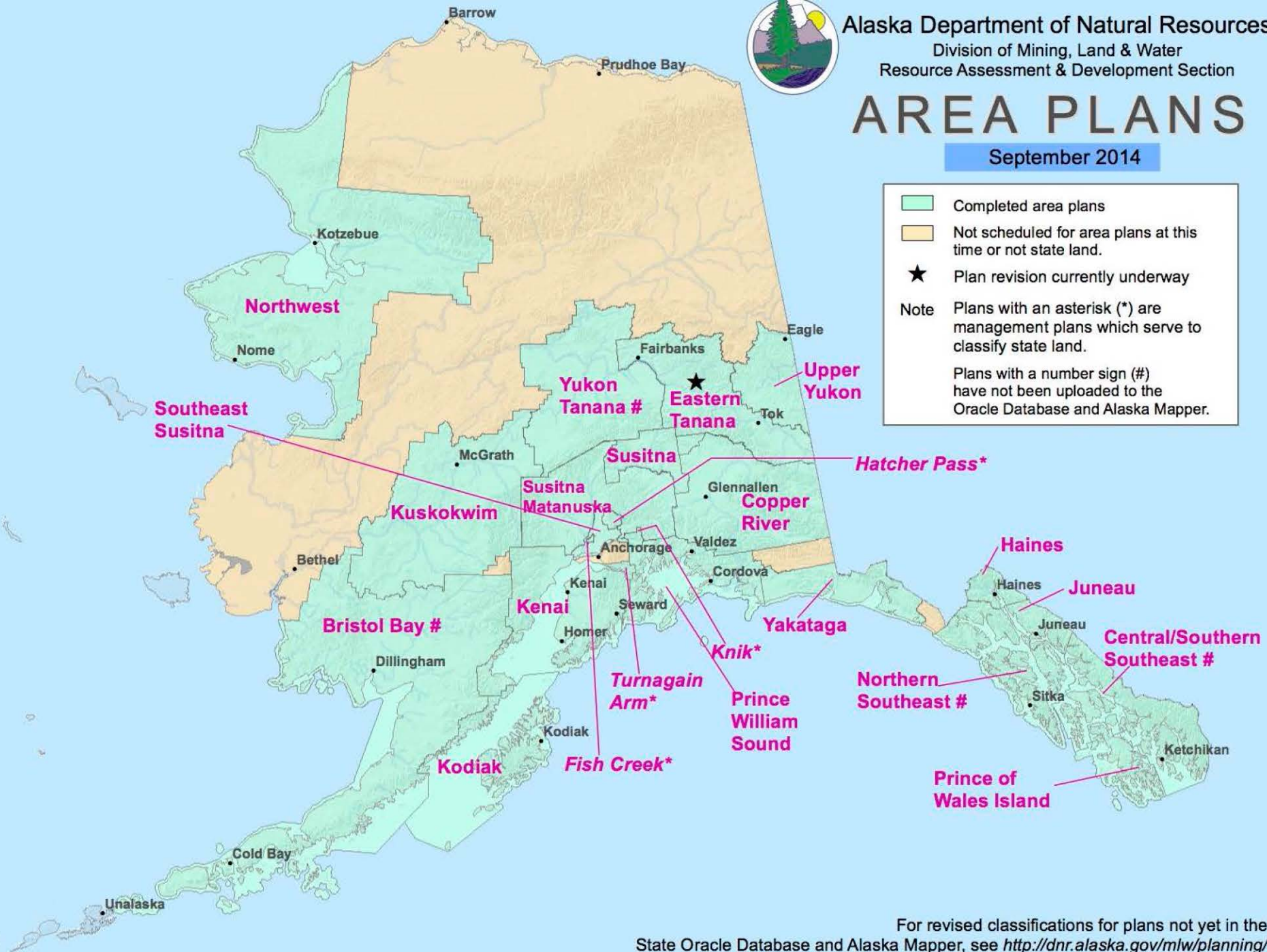




# AREA PLANS

September 2014

-  Completed area plans
-  Not scheduled for area plans at this time or not state land.
- ★ Plan revision currently underway
- Note Plans with an asterisk (\*) are management plans which serve to classify state land.
- Plans with a number sign (#) have not been uploaded to the Oracle Database and Alaska Mapper.





# The Council and its advisory bodies

**Council**: 11 voting members

- 7 appointed members, 4 agency
  - AK (6), WA (3), OR (1), and 1 from
- 4 non-voting members
- US Fish and Wildlife Service, U
  - Pacific States MFC, US State D

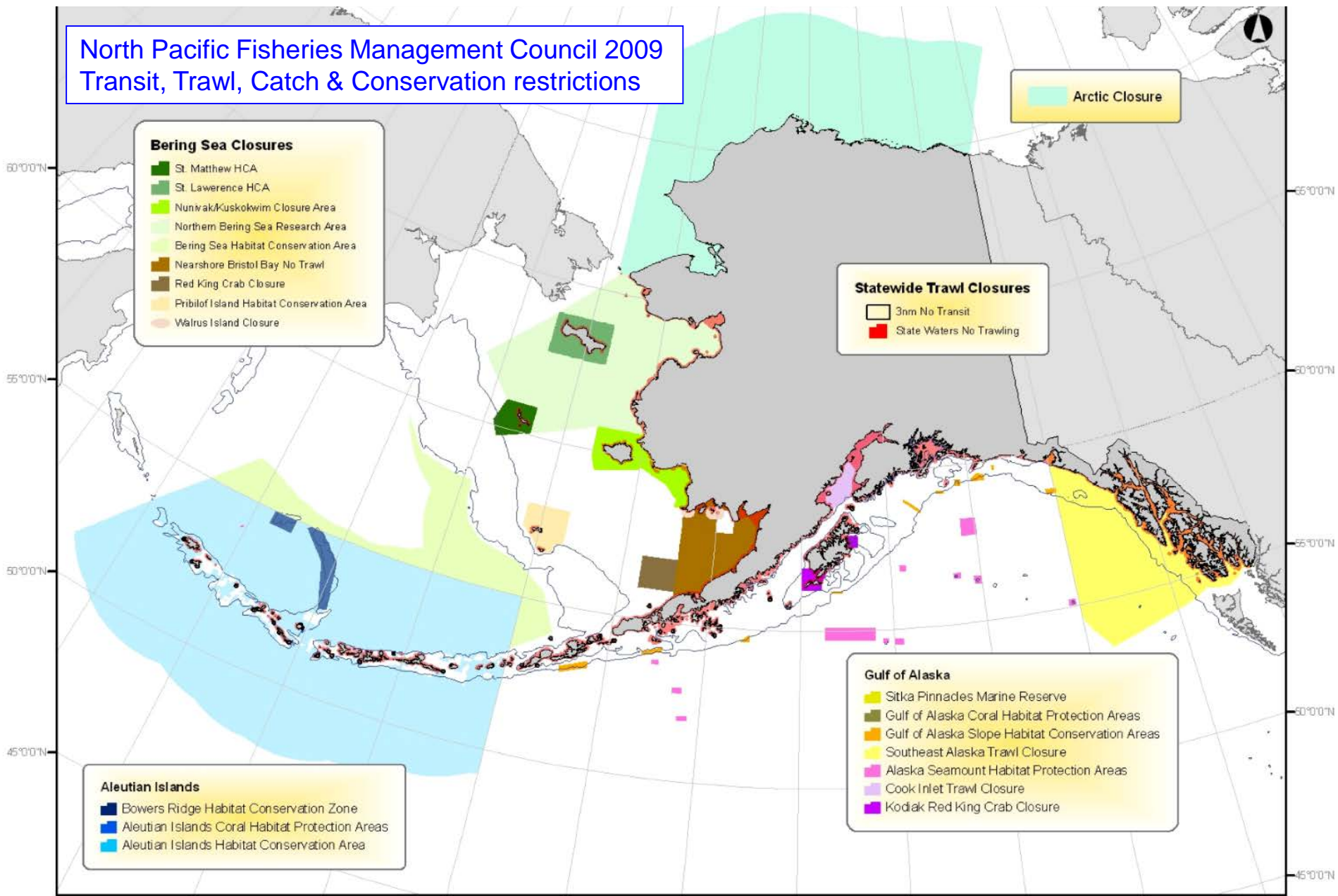
**Advisory Panel**: 21 members from the fishing

**Scientific and Statistical Committee**: 18 members  
Federal and State employees, academics, and  
experts

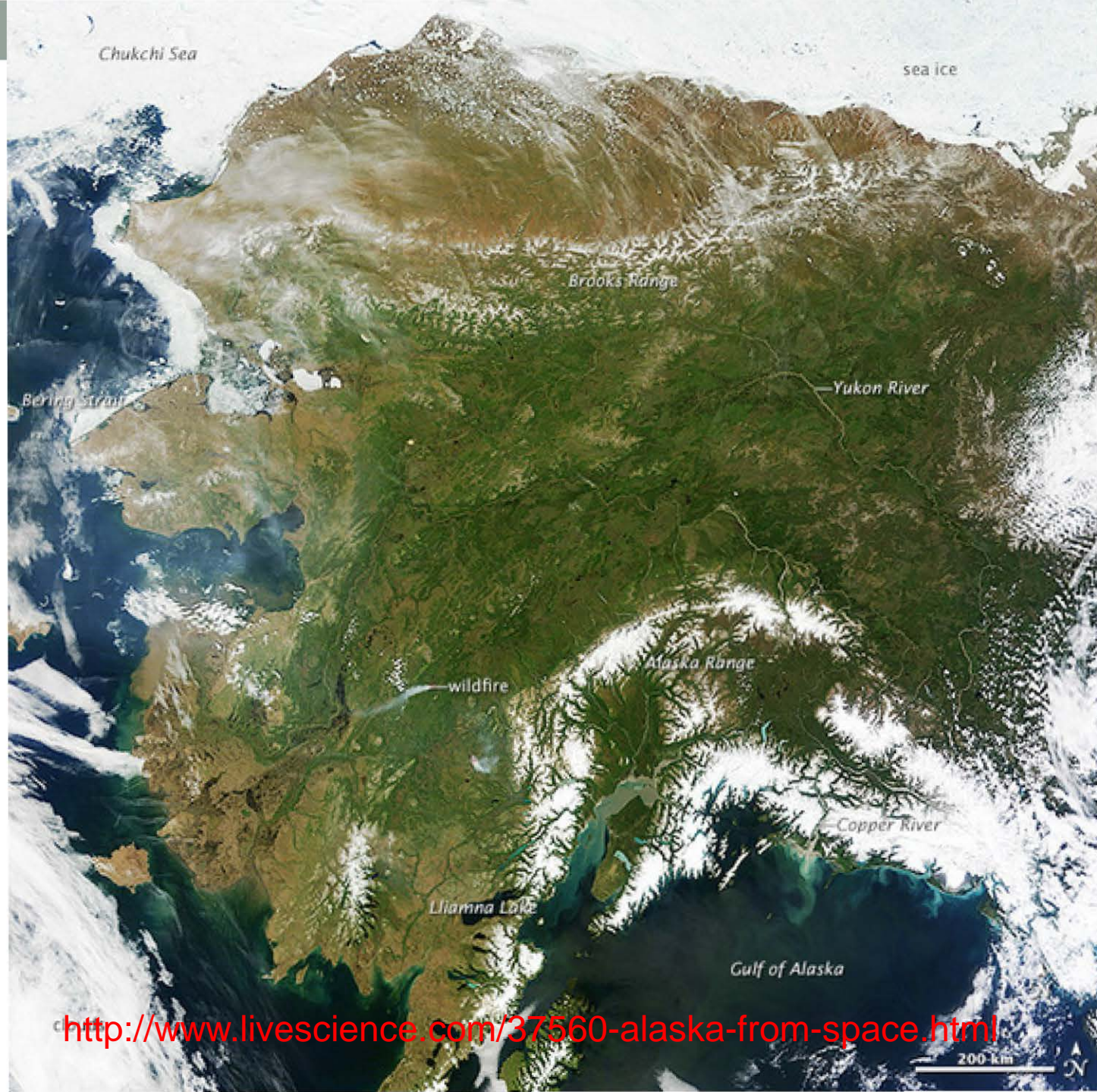
**Other committees**: Issue-specific committees  
on particular actions.

But it's a  
federal  
body ...  
Can any  
aspects  
be  
adapted?

# North Pacific Fisheries Management Council 2009 Transit, Trawl, Catch & Conservation restrictions







<http://www.livescience.com/37560-alaska-from-space.html>