



October 2015

TO: UAA Community
FROM: Erin J. Holmes, PhD
Associate Vice Provost, Institutional Research
SUBJECT: 2014-15 Fact Book

This is the 2014-15 Fact Book for your use. As you will note, the Fact Book is much abbreviated this year. This shorter version is the result of both an effort to save costs and the work of the Office of Institutional Research to move to more dynamic, electronic data resources for decision makers.

Electronic versions of the Fact Book are available at Institutional Research's SharePoint site at **<https://ir-reports.uaa.alaska.edu>**. Also available at the site are detailed electronic reports for your use.

Please feel free to contact the Office of Institutional Research with any questions, comments or suggestions you may have. Additionally, if you see items that need corrections or would like to see other information, please let us know. Your feedback helps Institutional Research provide the information you need for your decision making and planning.



UNIVERSITY *of* ALASKA ANCHORAGE

FACT BOOK 2014-15

October 2015

Office of Institutional Research

3211 Providence Drive, BOC3 - Suite 340

Anchorage, AK 99508

<http://www.uaa.alaska.edu/ir/>

Phone: 907.786.1493

Fax: 907.786.1499

Dr. Erin Holmes, *Associate Vice Provost*
Yuan-Fang Dong, *Senior Research Associate*
Brian Brubaker, *Research Associate*
Ginger Mongeau, *Research Associate*
Coy Gullett, *Research Associate*
Ester Bayne, *Research Assistant*

Unless otherwise noted, all numbers included in this Fact Book were compiled and produced by UAA's Office of Institutional Research using official closing freeze data in UA DSD data system, and are reported for University of Alaska. For data reported at the statewide system level (University of Alaska), please see UA in Review, produced by the University of Alaska Statewide Institutional Research and Analysis office. This report can be viewed at the following link: <http://www.alaska.edu/swbir/ir/ua-in-review/>

*Special Thanks for Contributions
and Proofreading Assistance:*

Brad Bodde
Renee Carter-Chapman
John Dede
Susan Harper
Sara Juday
Lonnie Mansell
Kelly Thorngren

It is the policy of the University of Alaska to provide equal education and employment opportunities and to provide service and benefits to all students and employees without regard to race, color, religion, national origin, sex, age, disability, or status as a Vietnam era or disabled veteran. This policy is in accordance with the laws enforced by the Department of Education and the Department of Labor, including Presidential Executive Order 11246, as amended, Title VI and Title VII of the 1964 Civil Rights Act, Title IX of the Educational Amendments of 1972, the Public Health Service Act of 1971, the Veterans' Readjustment Assistance Act of 1974, the Vocational Rehabilitation Act of 1973, the Age Discrimination in Employment Act of 1967, the Equal Pay Act of 1963, the 14th Amendment, EEOC's Sex Discrimination Guidelines, and Alaska Statutes 18.80.220 and 14.18. Inquiries regarding application of these and other regulations should be directed to the University's Affirmative Action Director, the Office of Civil Rights (U.S. Department of Education, Washington, D.C.), or the Office of Federal Contract Compliance Programs (U.S. Department of Labor, Washington, D.C.).

TABLE OF CONTENTS

INTRODUCTION

University of Alaska Anchorage Locations	2
Introduction to the 2014-15 UAA Fact Book	3
University of Alaska Anchorage Leadership	4
University of Alaska Anchorage Organizational Structure	5
Fast Facts About UAA Campuses	6
UAA Peer Institutions	7

STUDENTS

STUDENT HEADCOUNT, FALL CLOSING 2014	
By Characteristics and Campus	10
By Graduate/Undergraduate Level and Characteristics - UAA Total	12
STUDENT HEADCOUNT BY CHARACTERISTICS, FALL 2010 - 2014	
University of Alaska Anchorage Total	14
First-time Freshman	16
STUDENT HEADCOUNT BY DECLARED PROGRAMS OF STUDY, FALL 2010 - 2014	
By Major, Degree Type and Campus/College	20
LONG TERM TRENDS	
By Campus/Term, Academic Years 2006 - 2015	37
APPLIED, ACCEPTED, AND ENROLLED AT UAA, FALL 2010 - 2014	
Undergraduate Students	38
Graduate Students	40

ENROLLMENT

Headcount, Credit Hours, Enrollment, Student FTE, and Course Sections by Campus, Fall Closing 2014	43
STUDENT CREDIT HOURS	
By Discipline, Five-Year Trend: Fall Closing 2010 - 2014	44
SCH Trend by Semester and Campus, Academic Years 1991 - 2015	56
e-LEARNING	
Headcount, Seat Count & SCH by Origin of Courses vs. Origin of Students Admitted, AY 2011 - 2015	58

AWARDS

DEGREE AND CERTIFICATE AWARDS CONFERRED	
By Campus Summary, Academic Years 2011 - 2015	63
By Award Type, Academic Years 2011 - 2015	64
High Demand Job Area Awards, Academic Years 2011 - 2015	65
Long-Term Trend, Academic Years 1988 - 2015	66

FACULTY AND STAFF

EMPLOYEES

Employee Headcount Trends by Governance Unit, Fall 2010 - 2014 (All Employees)	68
Employee Headcount Trends by Governance Unit, Fall 2010 - 2014 (Regular and Term)	69
Employee Headcount Trends by Governance Unit, Fall 2010 - 2014 (Temporary)	70
Employee Characteristics by Campus, Fall 2014 (All Employees)	71
Regular and Term Employee Characteristics by Campus, Fall 2014	72
Temporary Employee Characteristics by Campus, Fall 2014	73

FACULTY

Regular and Term Faculty Characteristics by Campus, Fall 2014	74
Student Credit Hours Generated by Faculty Type, Fall 2014	76
Number of Course Sections Taught by Faculty Type, Fall 2014	77

FINANCE, GRANTS AND GIVING

BUDGET

Authorized State Appropriation Budget by Campus, Fiscal Years 2011 - 2015	80
Total Authorized Budget by Campus, Fiscal Years 2011 - 2015	80
Actual State Appropriation Expenditures by Campus, Fiscal Years 2010 - 2014	81
Total Actual Expenditures by Campus, Fiscal Years 2010 - 2014	81
Summary of Revenue Received, Fiscal Years 2011 - 2015	82
Summary of Expenditures by NCHEMS, Fiscal Years 2011 - 2015	83
Authorized Expenditure Budget (Unrestricted) Instruction Component Only, Fiscal Years 2011 - 2015	84

TUITION

Tuition Rate History, Fiscal Years 2012 - 2016	85
--	----

RESEARCH GRANTS

Awards by University Units and Fund Agencies, Fiscal Year 2015	86
Awards by University Units and Research Types, Fiscal Years 2011 - 2015	89
Proposal Submissions by University Units and Fund Agencies, Fiscal Year 2015	92
Proposal Submissions by University Units and Research Types, Fiscal Years 2011 - 2015	95

ALUMNI GIVING

Average Dollars Contributed per Alumni Donor, Fiscal Years 1998 - 2015	98
Donations by Amount and Donor Type, Fiscal Years 2013 - 2015	99

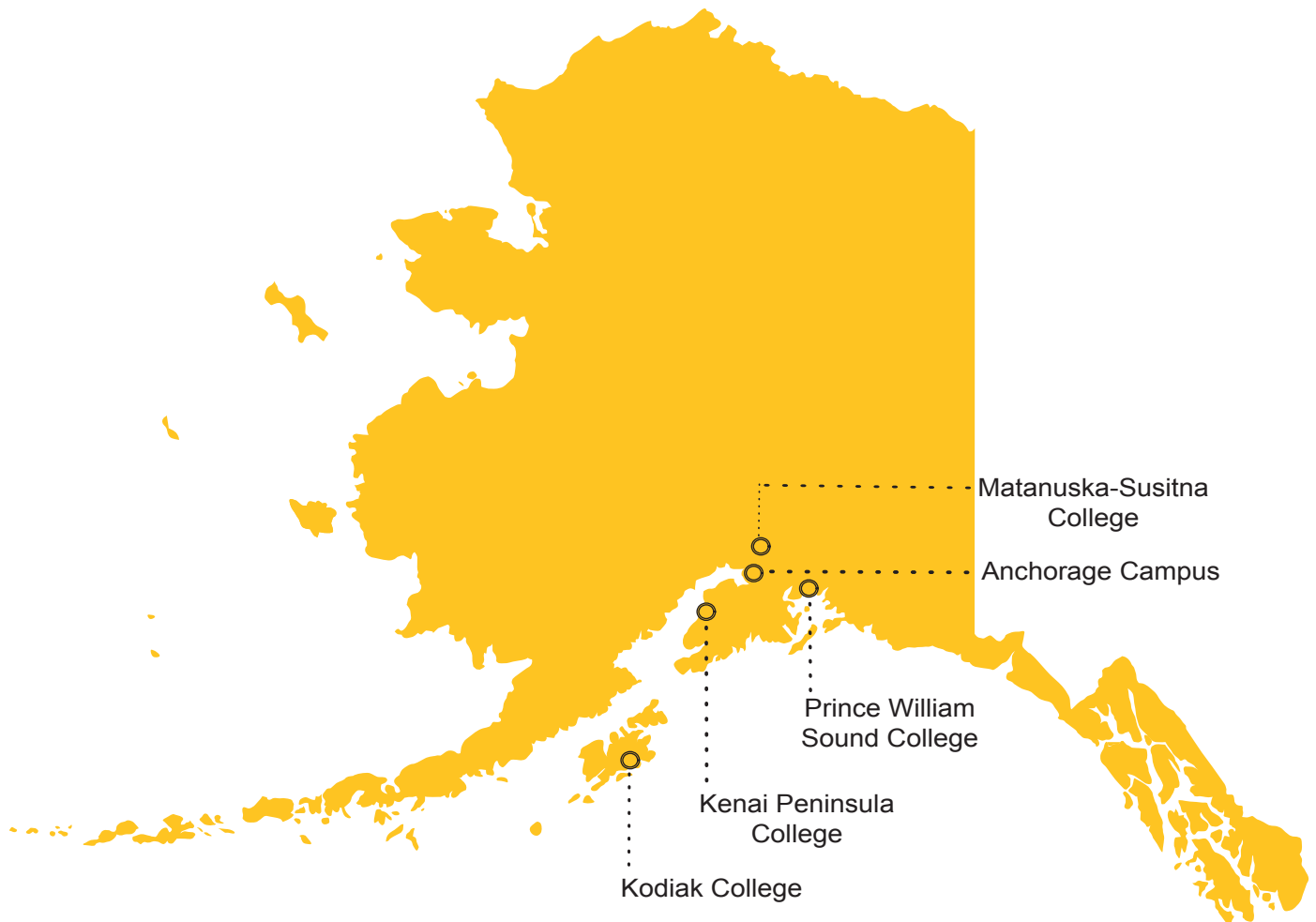
DEFINITION OF TERMS

Introduction



UNIVERSITY *of* ALASKA ANCHORAGE

LOCATIONS



INTRODUCTION

The University of Alaska Anchorage (UAA) is a multi-campus university with a combined enrollment of 19,000 students and a service area as expansive as the state of Montana. UAA is the largest university in the state and one of three universities in the University of Alaska Statewide System.

For a young institution, UAA has an extremely complex history. The present university was created in 1987 following a statewide reorganization that merged a university with several community colleges. In one form or another, these institutions have offered educational opportunities to the communities of southcentral Alaska since the 1950s.

Partly due to this unique history, UAA today is an open access university with one of the broadest missions in higher education. UAA offers instruction ranging from Adult Basic Education to graduate and professional education, serves both traditional and non-traditional students, and confers awards ranging from occupational endorsements to associate, baccalaureate, master's, and doctoral degrees. Through partnerships and affiliate programs, UAA also offers instruction leading to medical and other professional degrees. Through its centers and institutes, the university's research helps Alaskans to improve their health, public policy, education, training, economic development, and quality of life.

UAA is accredited by the Northwest Commission of Colleges and Universities (NWCCU). Many individual academic programs have additional program accreditation from professional associations and other external entities.

UAA is classified by the Carnegie Foundation for the Advancement of Teaching as a public Master's comprehensive university-large programs, with a special classification for Community Engagement. Distinctive educational opportunities include undergraduate research, national and international exchanges, and study abroad programs. Victory Media designated UAA a *Military Friendly School* for the sixth consecutive year.

Major Campuses and Academic Units

Anchorage Campus

- College of Arts & Sciences
- College of Business & Public Policy
- College of Education
- College of Engineering
- College of Health
- Community & Technical College
- University Honors College
- Graduate School*

Kenai Peninsula College

Kodiak College

Matanuska-Susitna College

Prince William Sound College

* Supports the graduate curriculum and research offered through Colleges and Schools



LEADERSHIP

The mission of the University of Alaska Anchorage is to discover and disseminate knowledge through teaching, research, engagement, and creative expression. Located in Anchorage and on community campuses in Southcentral Alaska, UAA is committed to serving the higher education needs of the state, its communities, and its diverse peoples. The University of Alaska Anchorage is an open access university with academic programs leading to occupational endorsements; undergraduate and graduate certificates; and associate, baccalaureate, and graduate degrees in a rich, diverse, and inclusive environment.

TOM CASE, *Chancellor*

SAM GINGERICH, *Provost and Executive Vice Chancellor, Academic Affairs*

WILLIAM SPINDLE, *Vice Chancellor, Administrative Services*

BRUCE SCHULTZ, *Vice Chancellor, Student Affairs*

MEGAN OLSON, *Vice Chancellor, University Advancement*

RENEE CARTER-CHAPMAN, *Senior Vice Provost, Academic Affairs*

ANCHORAGE COLLEGES

College of Arts & Sciences

John Stalvey, *Dean*

College of Business & Public Policy

Rashmi Prasad, *Dean*

College of Education

Heather Ryan, *Dean (July 2013 - March 2015)*

Paul Deputy, *Interim Dean (effective April 2015)*

College of Engineering

T. Bart Quimby, *Interim Dean (May 2014 - June 2015)*

Fred Barlow, *Dean (effective July 2015)*

College of Health

William Hogan, *Dean*

Community & Technical College

Bonnie Nygard, *Interim Dean*

Consortium Library

Steve Rollins, *Dean*

University Honors College

John Mouracade, *Interim Dean*

Alaska Native Science & Engineering Program (ANSEP)

Herbert Schroeder, *Vice Provost*

Curriculum & Assessment

Susan Kalina, *Vice Provost, Academic Affairs*

Health Programs

Jan Harris, *Vice Provost*

Research & Graduate Studies

Helena Wisniewski, *Vice Provost*

COMMUNITY CAMPUSES

Kenai Peninsula College

Gary Turner, *Director*

Kodiak College

Alan Fugleberg, *Director*

Matanuska-Susitna College

Talis Colberg, *Director*

Prince William Sound College

Dan O'Connor, *Director*

UNIVERSITY GOVERNANCE

Faculty Senate

Diane Hirshberg, *President, 2014 - 2015*

Tara Smith, *President, 2015 - 2016*

UAA Assembly

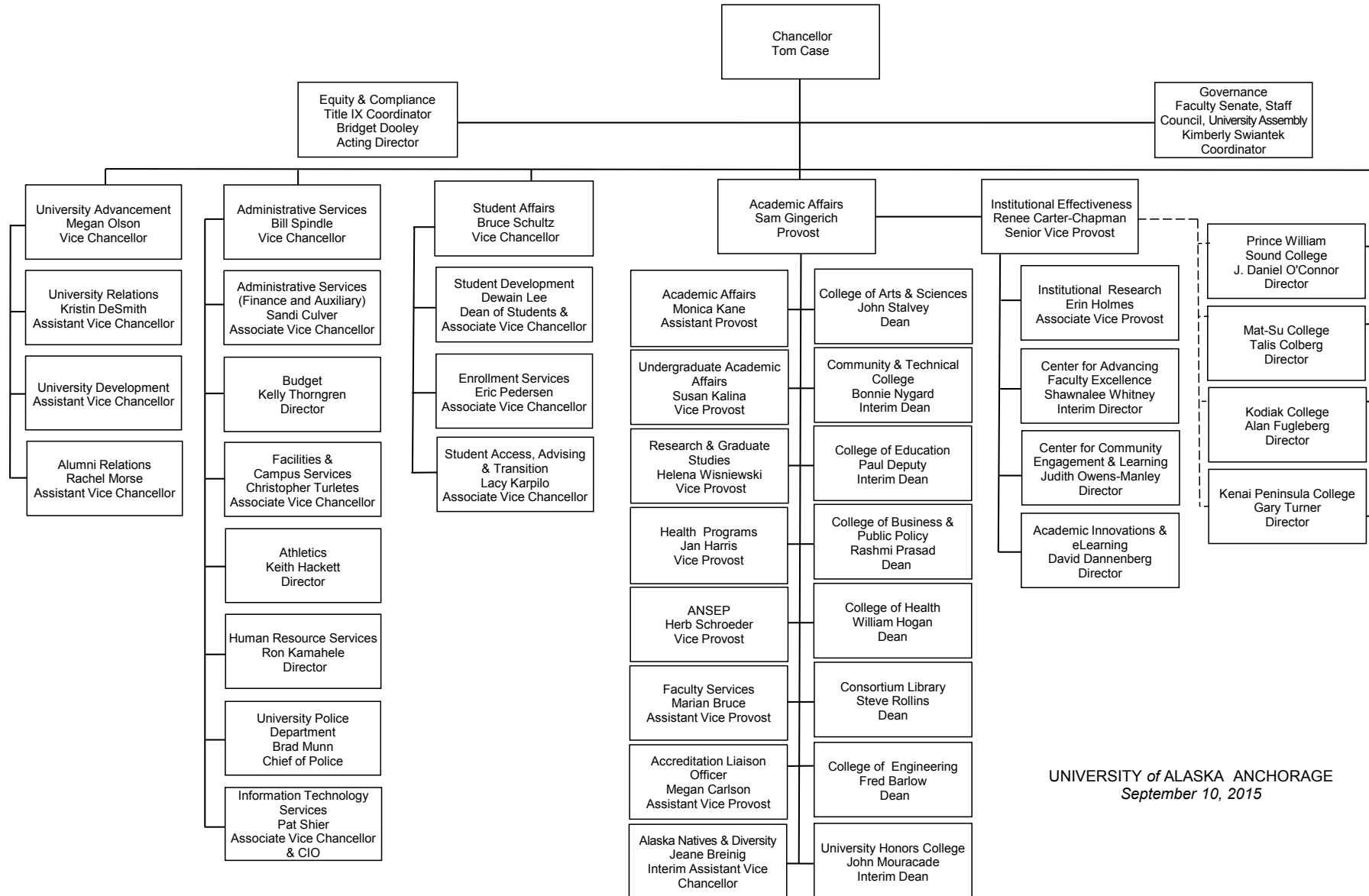
Elizabeth Winfree, *President, 2015 - 2016*

Staff Council

Kathleen McCoy, *Co-Chair, 2015 - 2016*

Elizabeth Winfree, *Co-Chair, 2015 - 2016*

ORGANIZATIONAL STRUCTURE



UNIVERSITY of ALASKA ANCHORAGE
September 10, 2015

FAST FACTS

UAA TOTAL

STUDENTS

AY 14-15 Student Credit Hours	358,414
Headcount	27,404
Full-time Equivalent	12,102
Awards Granted	2,561
Fall 2014 Headcount	18,649
Full-time	7,708
Part-time	10,941

FACULTY AND STAFF—FALL 2014

Regular Faculty	679
Adjunct Faculty	669
Staff	1,431

FACILITIES

Square Feet	3,103,648
-------------	-----------

FINANCE—FY 2015 (IN \$000)

Univ. Generated Revenue	\$171,844.2
Research Focus Expenditure	\$12,799.5
Total Budget Authority	\$320,101.8
Gross Tuition	\$69,150.3
TVEP Awards	\$1,848.7

Anchorage Campus

STUDENTS

AY 14-15 Student Credit Hours	282,751
Headcount	20,939
Full-time Equivalent	9,588
Awards Granted	2,215
Fall 2014 Headcount	14,754
Full-time	6,022
Part-time	8,732

FACULTY AND STAFF—FALL 2014

Regular Faculty	583
Adjunct Faculty	430
Staff	1,187

FACILITIES

Square Feet	2,639,030
-------------	-----------

FINANCE—FY 2015 (IN \$000)

Univ. Generated Revenue	\$152,285.5
Research Focus Expenditure	\$12,705.8
Total Budget Authority	\$277,978.8
Gross Tuition	\$56,951.6
TVEP Awards	\$1,426.2

Kenai Peninsula College

STUDENTS

AY 14-15 Student Credit Hours	33,800
Headcount	4,480
Full-time Equivalent	1,123
Awards Granted	169
Fall 2014 Headcount	2,716
Full-time	385
Part-time	2,331

FACULTY AND STAFF—FALL 2014

Regular Faculty	42
Adjunct Faculty	110
Staff	102

FACILITIES

Square Feet	183,070
-------------	---------

FINANCE—FY 2015 (IN \$000)

Univ. Generated Revenue	\$8,860.8
Research Focus Expenditure	\$93.7
Total Budget Authority	\$16,957.2
Gross Tuition	\$5,761.4
TVEP Awards	\$108.6

Kodiak College

STUDENTS

AY 14-15 Student Credit Hours	8,355
Headcount	1,633
Full-time Equivalent	278
Awards Granted	28
Fall 2014 Headcount	793
Full-time	53
Part-time	740

FACULTY AND STAFF—FALL 2014

Regular Faculty	14
Adjunct Faculty	25
Staff	41

FACILITIES

Square Feet	44,981
-------------	--------

FINANCE—FY 2015 (IN \$000)

Univ. Generated Revenue	\$2,674.9
Research Focus Expenditure	\$0
Total Budget Authority	\$5,903.1
Gross Tuition	\$1,276.4
TVEP Awards	\$155.5

Matanuska-Susitna College

STUDENTS

AY 14-15 Student Credit Hours	26,065
Headcount	2,868
Full-time Equivalent	866
Awards Granted	138
Fall 2014 Headcount	1,844
Full-time	438
Part-time	1,406

FACULTY AND STAFF—FALL 2014

Regular Faculty	31
Adjunct Faculty	78
Staff	57

FACILITIES

Square Feet	169,300
-------------	---------

FINANCE—FY 2015 (IN \$000)

Univ. Generated Revenue	\$5,664.6
Research Focus Expenditure	\$0
Total Budget Authority	\$11443.4
Gross Tuition	\$4,593.8
TVEP Awards	\$75.0

Prince William Sound College

STUDENTS

AY 14-15 Student Credit Hours	7,443
Headcount	2,403
Full-time Equivalent	248
Awards Granted	11
Fall 2014 Headcount	681
Full-time	51
Part-time	630

FACULTY AND STAFF—FALL 2014

Regular Faculty	9
Adjunct Faculty	26
Staff	44

FACILITIES

Square Feet	67,267
-------------	--------

FINANCE—FY 2015 (IN \$000)

Univ. Generated Revenue	\$2,358.4
Research Focus Expenditure	\$0
Total Budget Authority	\$7,819.3
Gross Tuition	\$567.2
TVEP Awards	\$83.4

Sources and Notes:

Students:

UA Statewide Institutional Research (IR) Decision Support Database (DSD) data at semester closing. Student Credit Hours include auditors. Awards Granted include: Undergraduate Certificate, Associate, Bachelor, Master, Doctorate, Endorsements, Licensure, Post Graduate, Post Baccalaureate, and Graduate Certificates. Headcount is for credit students only; students who enrolled in multiple campuses have been counted only once in the UAA total.

Faculty & Staff:

UA Statewide IR DSD data at Fall Freeze. Staff includes full-time & part-time employees but does not include graduate or student assistants.

Facilities:

UAA Facilities and Campus Services.

Finance:

UAA Office of Budget. Research Focus Expenditure is defined by UA Statewide as Basic Research.

TVEP stands for Technical/Vocational Education Program

Carnegie Classification:

Masters College and University Large Programs, Public 4-year and above.

PEER INSTITUTIONS

Arkansas Tech University

Boise State University

CUNY College of Staten Island

Ferris State University

Florida Gulf Coast University

Idaho State University

Indiana University-Purdue University - Fort Wayne

McNeese State University

Northern Kentucky University

Northwestern State University of Louisiana

Purdue University - Calumet Campus

The University of Texas at Brownsville

Troy University

University of Arkansas at Little Rock

University of West Florida

Weber State University

Western Kentucky University

Youngstown State University

Students

Headcount by Characteristics and Campus

UAA - Fall Closing 2014

Table 1.01

	UAA Total	% of Total	Anchorage Campus	Kenai Peninsula	Kodiak College	Mat-Su College	PW Sound College
Total	18,649	100.0%	14,754	2,716	793	1,844	681
Admission Type							
New	3,553	19.1%	2,549	445	123	431	216
Continue	11,274	60.5%	9,119	1,082	246	792	192
Returned	3,822	20.5%	3,086	1,189	424	621	273
Class Standing							
First-time Freshman	2,005	10.8%	1,568	101	38	160	11
Freshman	2,471	13.3%	1,692	237	48	200	66
Sophomore	2,779	14.9%	2,131	180	32	140	27
Junior	2,206	11.8%	1,836	95	16	61	9
Senior	3,606	19.3%	3,242	110	9	38	7
Graduate First-time	159	0.9%	159				
Graduate Other	751	4.0%	747				
Non-Degree/Other UA Prog	4,672	25.1%	3,379	1,993	650	1,245	561
Full-time							
Graduate	232	1.2%	230				
Undergraduate	7,476	40.1%	5,792	385	53	438	51
Total	7,708	41.3%	6,022	385	53	438	51
Part-time							
Graduate	732	3.9%	721	11	5		3
Undergraduate	10,209	54.7%	8,011	2,320	735	1,406	627
Total	10,941	58.7%	8,732	2,331	740	1,406	630
Gender							
Female	10,964	58.8%	8,667	1,673	580	1,157	365
Male	7,685	41.2%	6,087	1,043	213	687	316
Race							
African American	588	3.2%	534	66	20	29	12
Alaska Native	1,018	5.5%	778	142	57	85	62
Alaska Native Multirace	703	3.8%	597	88	41	57	16
American Indian	131	0.7%	93	25	8	24	6
Asian	1,237	6.6%	1,132	65	66	42	4
Hispanic	1,187	6.4%	1,010	125	75	85	27
Hispanic Multirace	81	0.4%	73	10	2	4	
Native Hawaiian/Pac Is	133	0.7%	116	14	5	5	2
White	11,020	59.1%	8,726	1,623	444	1,308	317
Non Hispanic Multirace	888	4.8%	783	96	26	82	15
Non Resident Alien	335	1.8%	315	12	16	1	5
Not Reported	1,328	7.1%	597	450	33	122	215

Headcount by Characteristics and Campus

UAA - Fall Closing 2014

Table 1.01

	UAA Total	% of Total	Anchorage Campus	Kenai Peninsula	Kodiak College	Mat-Su College	PW Sound College
Age							
0 - 17	869	4.7%	375	206	48	140	123
18 - 18	1,416	7.6%	1,117	157	35	170	23
19 - 19	1,541	8.3%	1,240	198	47	180	27
20 - 24	5,844	31.3%	4,973	772	242	587	107
25 - 29	3,042	16.3%	2,510	470	151	266	82
30 - 39	2,963	15.9%	2,355	485	144	267	116
40 - 49	1,547	8.3%	1,198	213	64	134	70
50 - 59	1,015	5.4%	742	139	49	67	79
60 & Over	391	2.1%	242	75	13	33	36
Not Reported	21	0.1%	2	1			18
Residency Origin							
In State	16,947	90.9%	13,280	2,535	728	1,772	611
Out of State	1,333	7.1%	1,131	165	48	70	63
International	335	1.8%	315	12	16	1	5
Not Reported	34	0.2%	28	4	1	1	2
Degree Level							
Certificate	275	1.5%	172	34	3	21	13
Associate	4,048	21.7%	2,121	689	140	578	107
Bachelor	8,725	46.8%	8,158				
Master's	771	4.1%	767				
Doctorate	26	0.1%	26				
Graduate Certificate	113	0.6%	113				
Post Baccalaureate Cert	19	0.1%	18				
Non-Degree/Other UA Prog	4,672	25.1%	3,379	1,993	650	1,245	561
Attempted Credit Hours							
0 - 2.9	1,669	8.9%	1,263	153	92	64	265
3 - 5.9	3,406	18.3%	2,831	1,348	518	748	244
6 - 8.9	3,455	18.5%	2,642	588	83	374	96
9 -11.9	2,562	13.7%	2,147	242	47	220	25
12 - 14.9	4,829	25.9%	3,649	282	46	372	40
15 & Over	2,728	14.6%	2,222	103	7	66	11

Source: UA Statewide Institutional Research (IR) Decision Support Database (DSD) data system at semester closing.

Notes:

1. UAA Total includes Anchorage, Kenai, Kodiak, Matanuska-Susitna, and Prince William Sound College. Headcount is unduplicated. Students who enrolled in multiple campuses have been counted only once in UAA Total.
2. Included are students enrolled in credit courses at the 050 level and above, including auditors.
3. Percentages may not add to 100% due to rounding.
4. See Definition of Terms for meaning of First-time Freshman.
5. Non-Degree/Other UA Programs = Non-Degree seeking students or Other University of Alaska program degree seekers.

Headcount by Graduate/Undergraduate Level and Characteristics Anchorage Campus - Fall Closing 2014

Table 1.02

	Graduate Students						Undergraduate Students	
	UAA	% of	UAA	Other UA		% of		% of
	Total	Total	Programs	Prog	Total	Total	Total	Total
UAA Total	18,649	100.0%	911	53	964	5.2%	17,685	94.8%
Admission Type								
New	3,553	19.1%	163	9	172	17.8%	3,381	19.1%
Continue	11,274	60.5%	700	24	724	75.1%	10,550	59.7%
Returned	3,822	20.5%	48	20	68	7.1%	3,754	21.2%
Class Standing								
First-time Freshman	2,005	10.8%					2,005	11.3%
Freshman	2,471	13.3%					2,471	14.0%
Sophomore	2,779	14.9%					2,779	15.7%
Junior	2,206	11.8%					2,206	12.5%
Senior	3,606	19.3%					3,606	20.4%
Graduate First-time	159	0.9%	159		159	16.5%		
Graduate Other	751	4.0%	751		751	77.9%		
Non-Degree/Other UA Prog	4,672	25.1%	1	53	54	5.6%	4,618	26.1%
Full-time								
Graduate	232	1.2%	231	1	232	24.1%		
Undergraduate	7,476	40.1%					7,476	42.3%
Total	7,708	41.3%	231	1	232	24.1%	7,476	42.3%
Part-time								
Graduate	732	3.9%	680	52	732	75.9%		
Undergraduate	10,209	54.7%					10,209	57.7%
Total	10,941	58.7%	680	52	732	75.9%	10,209	57.7%
Gender								
Female	10,964	58.8%	599	34	633	65.7%	10,331	58.4%
Male	7,685	41.2%	312	19	331	34.3%	7,354	41.6%
Race								
African American	588	3.2%	25		25	2.6%	563	3.2%
Alaska Native	1,018	5.5%	45	1	46	4.8%	972	5.5%
Alaska Native Multirace	703	3.8%	17	2	19	2.0%	684	3.9%
American Indian	131	0.7%	8		8	0.8%	123	0.7%
Asian	1,237	6.6%	30	3	33	3.4%	1,204	6.8%
Hispanic	1,187	6.4%	62	1	63	6.5%	1,124	6.4%
Hispanic Multirace	81	0.4%	4		4	0.4%	77	0.4%
Native Hawaiian/Pacific Is	133	0.7%	8		8	0.8%	125	0.7%
White	11,020	59.1%	644	38	682	70.7%	10,338	58.5%
Non Hispanic Multirace	888	4.8%	27	3	30	3.1%	858	4.9%
Non Resident Alien	335	1.8%	18		18	1.9%	317	1.8%
Not Reported	1,328	7.1%	23	5	28	2.9%	1,300	7.4%

Headcount by Graduate/Undergraduate Level and Characteristics

UAA - Fall Closing 2014

Table 1.02

	Graduate Students						Undergraduate Students	
	UAA	% of	UAA	Other UA		% of		% of
	Total	Total	Programs	Prog	Total	Total	Total	Total
Age								
0 - 17	869	4.7%					869	4.9%
18 - 18	1,416	7.6%					1,416	8.0%
19 - 19	1,541	8.3%					1,541	8.7%
20 - 24	5,844	31.3%	89	4	93	9.6%	5,751	32.5%
25 - 29	3,042	16.3%	233	12	245	25.4%	2,797	15.8%
30 - 39	2,963	15.9%	305	16	321	33.3%	2,642	14.9%
40 - 49	1,547	8.3%	153	11	164	17.0%	1,383	7.8%
50 - 59	1,015	5.4%	107	8	115	11.9%	900	5.1%
60 & Over	391	2.1%	24	2	26	2.7%	365	2.1%
Not Reported	21	0.1%					21	0.1%
Residency Origin								
In State	16,947	90.9%	762	43	805	83.5%	16,142	91.3%
Out of State	1,333	7.1%	127	10	137	14.2%	1,196	6.8%
International	335	1.8%	18		18	1.9%	317	1.8%
Not Reported	34	0.2%	4		4	0.4%	30	0.2%
Degree Level								
Certificate	275	1.5%					275	1.6%
Associate	4,048	21.7%					4,048	22.9%
Bachelor	8,725	46.8%					8,725	49.3%
Master's	771	4.1%	771		771	80.0%		
Doctorate	26	0.1%	26		26	2.7%		
Graduate Certificate	113	0.6%	113		113	11.7%		
Post Baccalaureate Cert	19	0.1%					19	0.1%
Non-Degree/Other UA Prog	4,672	25.1%	1	53	54	5.6%	4,618	26.1%
Attempted Credit Hours								
0 - 2.9	1,669	8.9%	126	25	151	15.7%	1,518	8.6%
3 - 5.9	3,406	18.3%	245	22	267	27.7%	3,139	17.7%
6 - 8.9	3,455	18.5%	309	5	314	32.6%	3,141	17.8%
9 - 11.9	2,562	13.7%	155	1	156	16.2%	2,406	13.6%
12 - 14.9	4,829	25.9%	50		50	5.2%	4,779	27.0%
15 & Over	2,728	14.6%	26		26	2.7%	2,702	15.3%

Source: UA Statewide IR DSD data system at semester closing.

Notes:

1. UAA Total includes Anchorage, Kenai, Kodiak, Matanuska-Susitna, and Prince William Sound College. Headcount is unduplicated. Students who enrolled in multiple campuses have been counted only once in UAA Total.
2. Included are students enrolled in credit courses at the 050 level and above, including auditors.
3. Percentages may not add to 100% due to rounding.
4. See Definition of Terms for meaning of First-time Freshman.
5. Non-Degree/Other UA Programs = Non-Degree seeking students or Other University of Alaska program degree seekers.

Headcount by Student Characteristics

UAA Total - Fall Semester Trends

Table 1.03

	2010	2011	2012	2013	2014	Percent Change	
						2010-14	2013-14
UAA Total	20,559	20,699	19,825	19,629	18,649	-9.3%	-5.0%
Anchorage Campus	16,129	16,205	15,718	15,640	14,754	-8.5%	-5.7%
Kenai Peninsula College	2,194	2,784	2,550	2,523	2,716	23.8%	7.6%
Kodiak College	614	755	841	796	793	29.2%	-0.4%
Matanuska-Susitna College	1,950	2,134	1,990	1,914	1,844	-5.4%	-3.7%
Prince William Sound College	952	957	753	834	681	-28.5%	-18.3%
Admission Type							
New	4,131	3,900	3,482	3,449	3,553	-14.0%	3.0%
Continue	11,714	11,964	11,854	11,880	11,274	-3.8%	-5.1%
Returned	4,714	4,835	4,489	4,300	3,822	-18.9%	-11.1%
Class Standing							
First-time Freshman	2,405	2,380	2,187	2,073	2,005	-16.6%	-3.3%
Freshman	2,675	2,846	2,720	2,648	2,471	-7.6%	-6.7%
Sophomore	2,642	2,858	2,912	2,782	2,779	5.2%	-0.1%
Junior	2,190	2,234	2,290	2,345	2,206	0.7%	-5.9%
Senior	3,178	3,391	3,498	3,672	3,606	13.5%	-1.8%
Graduate First-time	220	188	175	152	159	-27.7%	4.6%
Graduate Other	824	859	841	896	751	-8.9%	-16.2%
Licensure	5	5	1			-100.0%	
Non-Degree/Other UA Program	6,420	5,938	5,201	5,061	4,672	-27.2%	-7.7%
Full-time							
Graduate	254	255	257	228	232	-8.7%	1.8%
Undergraduate	7,687	8,025	7,836	7,610	7,476	-2.7%	-1.8%
Total	7,941	8,280	8,093	7,838	7,708	-2.9%	-1.7%
Part-time							
Graduate	901	898	820	897	732	-18.8%	-18.4%
Undergraduate	11,717	11,521	10,912	10,894	10,209	-12.9%	-6.3%
Total	12,618	12,419	11,732	11,791	10,941	-13.3%	-7.2%
Gender							
Female	12,196	12,167	11,653	11,675	10,964	-10.1%	-6.1%
Male	8,363	8,532	8,172	7,954	7,685	-8.1%	-3.4%
Race							
African American	686	719	673	629	588	-14.3%	-6.5%
Alaska Native	1,272	1,251	1,112	1,100	1,018	-20.0%	-7.5%
Alaska Native Multirace	515	615	677	720	703	36.5%	-2.4%
American Indian	185	155	168	141	131	-29.2%	-7.1%
Asian	1,005	1,116	1,172	1,181	1,237	23.1%	4.7%
Hispanic	1,080	1,166	1,169	1,193	1,187	9.9%	-0.5%
Hispanic Multirace	48	50	69	71	81	68.8%	14.1%
Native Hawaiian/Pac Is	173	157	167	153	133	-23.1%	-13.1%
White	13,224	12,839	11,761	11,791	11,020	-16.7%	-6.5%
Non Hispanic Multirace	664	745	885	900	888	33.7%	-1.3%
Non Resident Alien	393	420	418	350	335	-14.8%	-4.3%
Not Reported	1,314	1,466	1,554	1,400	1,328	1.1%	-5.1%

Headcount by Student Characteristics UAA Total - Fall Semester Trends

Table 1.03

	2010	2011	2012	2013	2014	Percent Change	
						2010-14	2013-14
Age							
0 - 17	1,026	1,080	1,134	931	869	-15.3%	-6.7%
18 - 18	1,530	1,564	1,508	1,432	1,416	-7.5%	-1.1%
19 - 19	1,673	1,643	1,629	1,570	1,541	-7.9%	-1.8%
20 - 24	6,229	6,437	6,212	6,059	5,844	-6.2%	-3.5%
25 - 29	3,315	3,322	3,209	3,189	3,042	-8.2%	-4.6%
30 - 39	3,019	3,102	2,949	3,098	2,963	-1.9%	-4.4%
40 - 49	1,949	1,835	1,692	1,724	1,547	-20.6%	-10.3%
50 - 59	1,348	1,260	1,078	1,213	1,015	-24.7%	-16.3%
60 & Over	453	437	404	408	391	-13.7%	-4.2%
Not Reported	17	19	10	5	21	23.5%	320.0%
Residency Origin							
In State	18,771	18,787	18,010	17,901	16,947	-9.7%	-5.3%
Out of State	1,356	1,447	1,360	1,346	1,333	-1.7%	-1.0%
International	394	421	418	350	335	-15.0%	-4.3%
Not Reported	38	44	37	32	34	-10.5%	6.3%
Degree Level							
Certificate	325	358	304	297	275	-15.4%	-7.4%
Associate	4,153	4,344	4,252	4,260	4,048	-2.5%	-5.0%
Bachelor	8,596	8,990	9,038	8,939	8,725	1.5%	-2.4%
Doctorate			26	24	26		8.3%
Master's	917	932	886	884	771	-15.9%	-12.8%
Graduate Certificate	127	115	104	140	113	-11.0%	-19.3%
Post Baccalaureate Certificate	16	17	13	24	19	18.8%	-20.8%
Teaching Licensure	5	5	1			-100.0%	
Non-Degree/Other UA Program	6,420	5,938	5,201	5,061	4,672	-27.2%	-7.7%
Attempted Credit Hours							
0 - 2.9	2,441	2,078	1,733	2,014	1,669	-31.6%	-17.1%
3 - 5.9	3,996	3,937	3,762	3,543	3,406	-14.8%	-3.9%
6 - 8.9	3,657	3,723	3,524	3,562	3,455	-5.5%	-3.0%
9 - 11.9	2,562	2,711	2,757	2,702	2,562	0.0%	-5.2%
12 - 14.9	5,478	5,787	5,287	5,038	4,829	-11.8%	-4.1%
15 & Over	2,425	2,463	2,762	2,770	2,728	12.5%	-1.5%

Source: UA Statewide IR DSD data system at semester closing.

Notes:

1. UAA Total includes Anchorage, Kenai, Kodiak, Matanuska-Susitna, and Prince William Sound College. Headcount is unduplicated. Students who enrolled in multiple campuses have been counted only once in UAA Total.
2. Included are students enrolled in credit courses at the 050 level and above, including auditors.
3. See Definition of Terms for meaning of First-time Freshman.
4. Other UA Programs include students admitted to UAF and UAS Programs of Study.

First-time Freshman by Student Characteristics

UAA - Fall Closing 2010 - 2014

Table 1.04

	2010	2011	2012	2013	2014
First-Time Freshman Total	2,405	2,380	2,187	2,073	2,005
Degree Level					
Bachelor	1,467	1,417	1,367	1,301	1,287
Associate	894	903	781	741	676
Certificate	44	56	36	30	29
Occupational Endorsement		4	3	1	13
Course Load					
Full-time	1,639	1,652	1,515	1,458	1,448
Part-time	766	728	672	615	557
Attempted Credit Hours					
0 - 2.9	6	7	3		2
3 - 5.9	106	104	74	71	79
6 - 8.9	303	289	260	249	213
9 - 11.9	326	306	312	277	263
12 - 14.9	1,294	1,328	1,152	1,059	1,050
15 & Over	370	346	386	417	398
Gender					
Female	1346	1315	1182	1204	1122
Male	1,059	1,065	1,005	869	883
Age					
0 - 17	84	85	89	111	90
18 - 18	1,191	1,194	1,203	1,104	1,092
19 - 19	407	392	369	381	380
20 - 24	390	382	296	266	258
25 - 29	163	143	112	91	80
30 - 39	101	111	69	68	63
40 - 49	43	58	28	33	25
50 - 59	26	10	18	16	15
60 & Over		5	3	3	2
Race					
African American	88	98	73	81	70
Alaska Native	211	154	139	151	143
Alaska Native Multirace	133	121	132	123	116
American Indian	17	15	19	7	10
Asian	191	217	183	191	185
Hispanic	138	155	173	182	171
Hispanic Multirace	13	6	14	11	14
Native Hawaiian/Pac Is	32	34	31	21	16
White	1,330	1,228	1,083	1,061	1,020
Non Hispanic Multirace	122	128	145	125	141
Non Resident Alien	28	55	36	27	36
Not Reported	102	169	159	93	83

First-time Freshman by Student Characteristics

UAA - Fall Closing 2010 - 2014

Table 1.04

	2010	2011	2012	2013	2014
High School Percentile					
Top 10	189	183	196	182	206
75 - 89th	320	317	326	316	299
50 - 74th	553	533	505	507	459
25 - 49th	439	467	423	365	397
Bottom 25	285	272	272	262	212
Unknown	619	608	465	441	432
High School GPA					
4.0 +	42	49	37	51	34
3.5 - 3.9	438	392	427	412	418
3.0 - 3.4	629	618	560	559	534
2.5 - 2.9	734	757	694	595	616
2.0 - 2.4	336	325	325	289	258
1.5 - 1.9	96	100	80	87	82
1.4 & Less	12	9	7	9	6
Unknown	118	130	57	71	57
Average Test Scores					
SAT Math					
Mean	509.6	507.7	509.9	504.4	507.9
Median	510	510	510	510	510
SAT Verbal					
Mean	510	521.1	509.6	495	500.2
Median	505	490	500	480	505
Enhanced Math					
Mean	20.9	21.2	21.5	20.9	21.1
Median	20	21	22	21	21
Enhanced English					
Mean	20	20.2	20.5	19.9	19.8
Median	20	21	21	20	20
Enhanced Reading					
Mean	21.4	21.8	22.3	21.4	21.8
Median	21	22	22	21	21
Residency Origin					
In State	2,271	2,224	2,070	1,958	1,881
Out of State	104	98	81	88	88
International	28	55	36	27	36
Not Reported	2	3			

First-time Freshman by Student Characteristics

UAA - Fall Closing 2010 - 2014

Table 1.04

	2010	2011	2012	2013	2014
High School Region					
Alaska Anchorage High Schools					
Alaska Adult Learning Center	4	5	12	6	6
Alaska Military Youth Academy		1	2	4	5
Anchorage Christian Academy	2	1		1	
Anchorage Christian Schools	9	16	19	17	13
Atheneum High School	1	2			
Avail School	1	3	2	5	3
Bartlett High School	110	114	109	103	94
Benny Benson Secondary School	15	14	8	12	6
Chugach Extension Corresp School		1	1		2
Chugiak High School	80	74	79	101	86
Crossroads High School	1	7	2	5	3
Dimond High School	120	132	153	139	128
Eagle River Christian High School	2	1			1
Eagle River High School	58	63	58	65	46
East Anchorage High School	152	177	154	145	172
Family Partnership Charter	14	16	26	14	17
Frontier Charter School	13	9	5	5	9
Grace Christian School	19	15	19	7	11
Heritage Christian School	1		1		
Heritage High School	9	3	1		
Highland Tech Charter School	8	8	7	9	4
Holy Rosary Academy		1	1		
Lumen Christi High School	8	5	6	4	2
McLaughlin Secondary	2	1	1	2	2
McLaughlin Youth Center	2	2		3	1
Polaris K-12 School	10	12	9	13	9
SAVE High School	18	26	14	20	19
Save I Program	4	1			1
Service High School	134	139	130	138	139
South Anchorage High School	117	126	121	95	98
Steller Sec Alternative	15	22	9	14	5
True Vine Christian School	1		1		1
Univ of Alaska Anchorage-High School	5	3		4	3
West Anchorage High School	116	105	122	88	109
Whaley High School		2			
World Harvest Christian School	1	1	1	1	

First-time Freshman by Student Characteristics

UAA - Fall Closing 2010 - 2014

Table 1.04

	2010	2011	2012	2013	2014
High School Region (continued)					
AK Gulf Coast High Schools	213	209	195	160	179
AK Interior High Schools	81	72	76	81	60
AK Mat-Su High Schools	312	256	282	243	261
AK Northern High Schools	39	25	28	23	49
AK Other High Schools	184	198	158	163	125
AK Southeast High Schools	86	74	67	50	43
AK Southwest High Schools	44	50	56	68	52
American Military High School	4	4	2	2	5
American Possessions	1	3	2	2	1
East North Central States	26	21	12	14	17
East South Central States	13	7	5	4	7
GED (Outside Alaska)	41	48	29	34	19
Home School	12	17	7	10	11
International High Schools	36	60	32	24	25
Mid-Atlantic States	12	6	15	16	7
Mountain States	39	42	24	29	30
New England States	9	7	8	6	5
No High School	6	7	2		1
Pacific States	79	71	55	57	57
South Atlantic States	34	31	22	25	22
Unknown High School	35	29	12	8	12
West North Central States	29	15	11	18	9
West South Central States	18	20	14	16	13

Source: UA Statewide IR DSD data system at semester closing.

Note:
First-time Freshman is a degree-seeking student who enrolls in an institution with no prior postsecondary experience. Includes students enrolled in academic or occupational programs. Also includes students enrolled in the fall term who attended college for the first time in the prior summer term, or students who entered with advanced standing (college credits earned before graduation from high school).

Headcount Trends by Major, Degree Type, and Campus/College Fall Closing 2010 - 2014

Table 1.05

	2010	2011	2012	2013	2014
Anchorage Campus					
College of Arts & Sciences					
Anthropology					
Bachelor of Arts	71	72	55	61	63
Bachelor of Science	14	24	25	28	22
Master of Arts	34	34	33	27	28
Total	119	130	113	116	113
Applied Ethics					
One Year Certificate	1				2
Art					
Bachelor of Arts	130	133	147	134	137
Bachelor of Fine Arts	14	13	15	13	10
Total	144	146	162	147	147
Biological Sciences					
Bachelor of Arts	94	89	93	88	74
Bachelor of Science	380	395	410	387	434
Master of Science	26	31	29	27	22
Total	500	515	532	502	530
Chemistry					
Bachelor of Science	72	72	80	93	84
Children's Mental Health					
Graduate Certificate			2	4	1
Clinical Psychology					
Master of Science	25	27	25	25	26
Clinical Community Psychology					
Ph.D.			26	24	26
Creative Writing & Literary Arts					
Master of Fine Arts	43	38	37	44	48
Dual Language					
Bachelor of Arts	16	14	10	16	17
English					
Bachelor of Arts	212	221	211	189	180
Master of Arts	16	14	18	23	14
Total	228	235	229	212	194
Environment & Society					
Bachelor of Arts	14	27	38	32	31
Bachelor of Science	9	22	33	35	39
Total	23	49	71	67	70
General Program					
Associate of Arts	482	575	575	574	481
Geological Science					
Bachelor of Science	85	91	99	93	111
History					
Bachelor of Arts	164	167	166	171	154

Headcount Trends by Major, Degree Type, and Campus/College Fall Closing 2010 - 2014

Table 1.05

	2010	2011	2012	2013	2014
Interdisciplinary Studies					
Bachelor of Arts	2	4			1
Bachelor of Science	1	1		1	1
Master of Arts	1				
Master of Science	3	3	2	1	4
Total	7	8	2	2	6
International Studies					
Bachelor of Arts	86	92	88	75	79
Journalism & Public Communication					
Bachelor of Arts	182	160	144	143	116
Non-Degree Seeking				1	
Total	182	160	144	144	116
Languages					
Bachelor of Arts	120	125	100	93	93
Liberal Studies					
Bachelor of Liberal Studies	41	41	29	18	18
Mathematics					
Bachelor of Arts	26	23	25	27	22
Bachelor of Science	60	63	61	64	73
Total	86	86	86	91	95
Music					
Bachelor of Arts	5	6	5	7	4
Music Performance					
Bachelor of Music	15	16	16	12	9
Music, Music Education Emphasis					
Bachelor of Music	35	32	30	29	30
Natural Sciences					
Bachelor of Science	120	148	176	192	190
Philosophy					
Bachelor of Arts	37	36	39	38	31
Political Science					
Bachelor of Arts	105	106	115	99	74
Pre-Major Fine Arts					
Bachelor of Fine Arts	62	61	53	49	51
Pre-Major Languages					
Bachelor of Arts	4			2	1
Pre-Major Music					
Bachelor of Arts	19	17	21	17	15
Pre-Major Music Performance					
Bachelor of Music	13	13	17	17	17
Pre-Major Music, Music Education Emphasis					
Bachelor of Music	26	22	21	19	18
Psychology					
Bachelor of Arts	380	381	380	363	343
Bachelor of Science	99	120	115	117	89
Total	479	501	495	480	432

Headcount Trends by Major, Degree Type, and Campus/College Fall Closing 2010 - 2014

Table 1.05

	2010	2011	2012	2013	2014
College of Arts and Sciences (continued)					
Sociology					
Bachelor of Arts	67	64	62	56	58
Bachelor of Science	7	7	2	6	6
Total	74	71	64	62	64
Theatre					
Bachelor of Arts	53	66	63	58	55
College of Arts & Sciences Total	3,471	3,666	3,691	3,592	3,402
College of Business & Public Policy					
Accounting					
Associate of Applied Science	97	95	109	103	87
Bachelor of Arts			1		
Bachelor of Business Administration	343	376	414	403	375
Total	440	471	524	506	462
Business Administration					
Master of Business Administration	32	8	7	2	
Business Computer Info Systems					
Associate of Applied Science	14	18	16	16	17
Economics					
Bachelor of Arts	47	46	47	51	47
Bachelor of Business Administration	37	36	38	37	34
Total	84	82	85	88	81
Finance					
Bachelor of Business Administration	127	112	120	130	129
General Management					
Master of Business Administration	121	124	125	111	100
Global Logistics Supply Chain Management					
Bachelor of Business Administration	36	40	53	53	63
Global Logistics Management					
Bachelor of Business Administration	23	8	3		
Global Supply Chain Management					
Master of Science	1			17	14
Logistics					
One Year Certificate	2	1			
Occupational Endorsement Certificate			1		
Total	2	1	1		
Logistics & Supply Chain Operations					
Associate of Applied Science	10	19	18	24	30
One Year Certificate	4	3	3	5	1
Occupational Endorsement Certificate	2	1		13	
Total	16	23	21	42	31
Logistics Operations					
Associate of Applied Science	6	1			

Headcount Trends by Major, Degree Type, and Campus/College Fall Closing 2010 - 2014

Table 1.05

	2010	2011	2012	2013	2014
Management					
Bachelor of Arts	1				
Bachelor of Business Administration	363	417	431	359	425
Total	364	417	431	359	425
Management Information Systems					
Bachelor of Business Administration	72	70	72	55	56
Marketing					
Bachelor of Arts				1	1
Bachelor of Business Administration	143	132	136	124	94
Total	143	132	136	125	95
Pre-Global Logistics Supply Chain Management					
Bachelor of Business Administration					1
Pre-Major Accounting					
Bachelor of Business Administration	8	9	2	3	6
Pre-Major Finance					
Bachelor of Business Administration	2	5	3	3	1
Pre-Major Management					
Bachelor of Business Administration	13	12	7	10	8
Pre-Major Management Info System					
Bachelor of Business Administration	4	2		1	1
Pre-Major Marketing					
Bachelor of Business Administration	7	2	3	4	2
Pre-Major Global Logistics Management					
Bachelor of Business Administration	1				
Pre-Major Economics					
Bachelor of Arts	1	1	1		
Bachelor of Business Administration	1	2			
Total	2	3	1		
Public Administration					
Master of Public Administration	43	45	41	33	35
Small Business Administration					
Associate of Applied Science	73	81	79	83	101
Supply Chain Management					
Graduate Certificate	2				
College of Business & Public Policy Total	1,636	1,666	1,730	1,641	1,628
College of Education					
Adult Education					
Master of Education	1				
Counselor Education					
Graduate Certificate	4		1	1	
Master of Education	29	36	39	46	38
Total	33	36	40	47	38
Early Childhood					
Post-Bachelor Certificate	3	4	9	13	8

Headcount Trends by Major, Degree Type, and Campus/College Fall Closing 2010 - 2014

Table 1.05

	2010	2011	2012	2013	2014
College of Education (continued)					
Early Childhood Development					
Associate of Applied Science	51	56	58	57	50
One Year Certificate	3	10	7	5	5
Total	54	66	65	62	55
Early Childhood Education					
Associate of Applied Science		1	1		
Bachelor of Arts	142	174	202	238	211
Total	142	175	203	238	211
Early Childhood Special Education					
Master of Education	19	19	12	14	17
Education					
Master of Arts in Teaching	42	50	45	46	27
Educational Leadership					
Master of Education	117	121	99	76	46
Elementary Education (K-6)					
Post-Bachelor Certificate	13	13	4	4	6
Elementary Education					
Bachelor of Arts	324	323	257	248	241
Licensure Program	1				
Total	325	323	257	248	241
Language Education					
Graduate Certificate			1	21	25
Master Teacher					
Master of Education	6	3	3	5	2
Pre-Major Early Childhood					
Bachelor of Arts	2			1	
Pre-Major Early Childhood Education					
Bachelor of Arts	1				
Pre-Major Elementary Education					
Bachelor of Education		1			
Pre-Major Elementary Education					
Bachelor of Arts	6	2	1	1	1
Principal					
Graduate Certificate	41	32	25	40	42
Licensure Program		1	1		
Non-Degree Seeking				1	1
Total	41	33	26	41	43
Principal (7-12)					
Licensure Program		1			
Principal (K-8, 7-12)					
Licensure Program	1	1			
Reading Specialist					
Educational Endorsement		1	1	2	
School-Age Care: Administrator					
Occupational Endorsement Certificate	1				

Headcount Trends by Major, Degree Type, and Campus/College Fall Closing 2010 - 2014

Table 1.05

	2010	2011	2012	2013	2014
Special Education					
Graduate Certificate	49	54	44	36	17
Master of Education	19	17	15	17	11
Non-Degree Seeking				1	
Total	68	71	59	54	28
Superintendent					
Educational Endorsement		1			
Graduate Certificate	8	7	11	10	12
Post-Graduate Certificate				1	
Total	8	8	11	11	12
Teaching Credential - Special Education					
Licensure Program	2	1			
Non-Degree Seeking		1		1	
Total	2	2		1	
Teaching Credential - Educational Leader					
Licensure Program	1	1			
Teaching and Learning					
Master of Education		1	12	16	24
e-Learning					
Graduate Certificate	1	1		1	
College of Education Total	887	933	848	902	784
College of Engineering					
Applied Environmental Science & Technology					
Masters - Other	9	6	6	6	3
Master of Science	8	9	11	13	10
Total	17	15	17	19	13
Arctic Engineering					
Master of Science	13	20	13	9	5
Civil Engineering					
Bachelor of Science	200	162	140	130	113
Masters of Civil Engineering	11	17	9	8	9
Master of Science	16	16	22	22	18
Total	227	195	171	160	140
Computer Science					
Bachelor of Arts	44	39	54	46	50
Bachelor of Science	104	129	169	154	176
Total	148	168	223	200	226
Earthquake Engineering					
Graduate Certificate	1				
Engineering					
Bachelor of Science	458	345	257	239	228
Engineering Management					
Master of Science	10	15	12	16	12

Headcount Trends by Major, Degree Type, and Campus/College Fall Closing 2010 - 2014

Table 1.05

	2010	2011	2012	2013	2014
College of Engineering (continued)					
Environmental Quality Engineering					
Master of Science		1			
Environmental Quality Science					
Master of Science	1	1			
Environmental Regulation & Permitting					
Graduate Certificate	7	5	6	6	2
Geographic Information Systems					
One Year Certificate	7	4	7	4	4
Geomatics					
Associate of Applied Science	21	18	10	7	3
Bachelor of Science	43	44	47	54	73
Total	64	62	57	61	76
Mechanical Engineering					
Master of Science					5
Port & Coastal Engineering					
Graduate Certificate	1	1		1	
Pre-Major Civil Engineering					
Bachelor of Science	58	124	135	104	106
Pre-Major Engineering					
Bachelor of Science	12	197	261	317	364
Project Management					
Master of Science	65	66	69	51	65
Science Management					
Master of Science	1	1	2	2	1
College of Engineering Total	1,090	1,220	1,230	1,189	1,247
College of Health					
Advanced Human Service Systems					
Graduate Certificate		4	4	7	4
Children's Behavioral Health					
Occupational Endorsement Certificate	4	15	13	9	7
Children's Residential Service					
Occupational Endorsement Certificate	1	1			
Civic Engagement					
One Year Certificate		1			
Clinical Assistant					
Occupational Endorsement Certificate	1		2	1	2
Conflict Resolution					
Occupational Endorsement Certificate	2	3	1		2
Dental Assisting					
Associate of Applied Science	10	4	6	9	9
Two Year Certificate	3	10	8	3	10
Total	13	14	14	12	19

Headcount Trends by Major, Degree Type, and Campus/College Fall Closing 2010 - 2014

Table 1.05

	2010	2011	2012	2013	2014
Dental Hygiene					
Associate of Applied Science	21	23	23	23	25
Bachelor of Science	6	4	17	13	8
Total	27	27	40	36	33
Diagnostic Medical Sonography					
Associate of Applied Science			6	10	8
Family Nurse Practitioner					
Graduate Certificate				1	
Fire & Emergency Services Tech					
Associate of Applied Science	56	65	51	46	41
Fire Service Administration					
Associate of Applied Science			1		
Health Sciences					
Bachelor of Science	3	2	6	3	5
Human Services					
Associate of Applied Science	127	132	144	132	130
Bachelor of Human Services	59	55	43	47	46
Bachelor of Science			1	1	1
Total	186	187	188	180	177
Justice					
Bachelor of Arts	236	254	274	234	147
Legal Nurse Consultant Paralegal					
One Year Certificate				1	
Legal Studies					
Bachelor of Arts				10	11
Limited Radiography					
Occupational Endorsement Certificate	6	9	6	2	1
Medical Assisting					
Associate of Applied Science	11	16	18	22	21
Medical Laboratory Technology					
Associate of Applied Science	6	5	7	9	5
Medical Laboratory Science					
Bachelor of Science			27	49	82
Medical Office Coding					
Occupational Endorsement Certificate	7	12	11	17	34
Medical Office Supply					
Occupational Endorsement Certificate	1		2	1	1
Medical Technology					
Bachelor of Science	87	90	70	44	22
Nursing					
Associate of Applied Science	165	161	193	207	193
Nursing Education					
Graduate Certificate	4			1	
Nursing Science					
Bachelor of Science	187	187	192	203	202
Master of Science	46	43	45	59	54
Total	233	230	237	262	256

Headcount Trends by Major, Degree Type, and Campus/College Fall Closing 2010 - 2014

Table 1.05

	2010	2011	2012	2013	2014
College of Health (continued)					
Paralegal Studies					
Associate of Applied Science				7	7
Two Year Certificate	8	4	6	6	1
Post-Bachelor Certificate				6	2
Total	8	4	6	19	10
Pharmacy Technology					
Occupational Endorsement Certificate	21	20	19	17	14
Phlebotomist					
Occupational Endorsement Certificate	7	3	8	7	5
Physical Therapist Assistant					
Associate of Applied Science					7
Pre-Major Dental Assisting					
Associate of Applied Science	10	7	7	9	7
Two Year Certificate	5		4	3	1
Total	15	7	11	12	8
Pre-Major Dental Hygiene					
Associate of Applied Science	95	102	88	76	70
Bachelor of Science	2	27	37	46	59
Total	97	129	125	122	129
Pre-Major Health Science					
Bachelor of Science	29	26	30	60	159
Pre-Major Human Services					
Bachelor of Human Services	9	10	12	17	4
Pre-Major Justice					
Bachelor of Arts				20	83
Pre-Major Medical Assisting					
Associate of Applied Science	48	57	69	56	72
Pre-Major Medical Laboratory Technology					
Associate of Applied Science	24	24	30	26	17
Pre-Major Nursing					
Associate of Applied Science	360	335	324	334	352
Pre-Major Nursing Science					
Bachelor of Science	830	815	798	825	790
Pre-Major Paralegal Studies					
Two Year Certificate	23	29	25	10	5
Post-Bachelor Certificate				1	3
Total	23	29	25	11	8
Pre-Major Social Work					
Bachelor of Social Work	58	68	96	100	108
Pre-Major Diagnostic Medical Sonography					
Associate of Applied Science			3	7	12
Pre-Major Legal Studies					
Bachelor of Arts				9	31
Pre-Major Paralegal Studies					
Associate of Applied Science				15	16

Headcount Trends by Major, Degree Type, and Campus/College Fall Closing 2010 - 2014

Table 1.05

	2010	2011	2012	2013	2014
Pre-Major Physical Therapist Asst					
Associate of Applied Science					6
Pre-Major Radiologic Technology					
Associate of Applied Science	109	111	103	102	86
Psychiatric & Mental Health Nurse Practitioner					
Graduate Certificate	3	4	2	1	1
Public Health Practice					
Master of Public Health	69	73	69	88	75
Radiologic Technology					
Associate of Applied Science	33	26	32	36	23
Social Work					
Bachelor of Social Work	32	40	25	24	27
Master of Social Work	74	75	68	64	51
Total	106	115	93	88	78
Social Work Management					
Graduate Certificate	1		1		1
College of Health Total	2,899	2,952	3,027	3,136	3,166
Community & Technical College					
Air Traffic Control					
Associate of Applied Science	95	80	70	60	32
Apprenticeship Technology					
Associate of Applied Science	9	6	8	11	5
Architectural & Engineering Technology					
Associate of Applied Science	49	58	46	53	47
Architectural Drafting					
One Year Certificate	8	8	3	4	5
Automotive Technology					
Associate of Applied Science	41	41	46	40	34
Two Year Certificate	13	14	14	8	10
Total	54	55	60	48	44
Aviation Administration					
Associate of Applied Science	3	11	7	35	46
Aviation Maintenance - Airframe					
Two Year Certificate		8	11	27	31
Aviation Maintenance - Powerplant					
Two Year Certificate			15	17	6
Aviation Maintenance Technology					
Associate of Applied Science	36	33	24	23	34
Two Year Certificate	16	8	4		
Total	52	41	28	23	34
Aviation Technology					
Bachelor of Science	250	241	241	218	208
Bookkeeping Support					
Occupational Endorsement Certificate	1	2	1	1	

Headcount Trends by Major, Degree Type, and Campus/College Fall Closing 2010 - 2014

Table 1.05

	2010	2011	2012	2013	2014
Community & Technical College (continued)					
Brakes, Suspension, Alignment					
Occupational Endorsement Certificate		2			1
CAD for Building Construction					
Occupational Endorsement Certificate	1	2	1	1	2
Career & Technical Education					
Graduate Certificate			1	2	
Master of Science	16	18	17	15	6
Total	16	18	18	17	6
Cisco Certificate Network Associate					
Occupational Endorsement Certificate	2	5	1	2	4
Civil Drafting					
One Year Certificate		1	3	3	1
Computer & Networking Technology					
Associate of Applied Science			67	89	102
Two Year Certificate	32	39	17	19	11
Total	32	39	84	108	113
Computer Info Office Systems					
Associate of Applied Science	47	55	37	30	14
Construction Management					
Associate of Applied Science	41	40	28	34	28
Bachelor of Science	116	112	128	128	119
Total	157	152	156	162	147
Corporate Specified Skills					
Occupational Endorsement Certificate	1			1	1
Culinary Arts					
Associate of Applied Science	102	120	114	95	80
Desktop Publishing & Graphics					
Occupational Endorsement Certificate	1				
Dietetic Internship					
Graduate Certificate	5	5	5	5	8
Dietetics					
Bachelor of Science		3	10	12	13
Electrical					
Occupational Endorsement Certificate				1	1
Engine Performance					
Occupational Endorsement Certificate	3	1			
Fitness Leadership					
Occupational Endorsement Certificate	4	9	7	4	1
Heavy Duty Transportation & Equipment					
Associate of Applied Science	20	20	21	25	22
Two Year Certificate	6	9	6	9	5
Total	26	29	27	34	27
Hospitality Restaurant Management					
Bachelor of Arts	69	74	70	83	83
Industrial Welding Technology					
One Year Certificate	4				

Headcount Trends by Major, Degree Type, and Campus/College Fall Closing 2010 - 2014

Table 1.05

	2010	2011	2012	2013	2014
Legal Office Support					
Occupational Endorsement Certificate			1		
Mechanical & Electrical Drafting					
One Year Certificate	1	1	1	3	4
Non-Destructive Testing					
One Year Certificate	5	2		1	
Non-Destructive Testing Technology					
Occupational Endorsement Certificate					6
Nutrition					
Bachelor of Science	38	54	31	31	16
Office Digital Media					
Occupational Endorsement Certificate			2		
Office Foundations					
Occupational Endorsement Certificate	1	3	2	6	7
Office Support					
Occupational Endorsement Certificate	1	2	1	1	
Outdoor Leadership					
Occupational Endorsement Certificate			1		
Physical Education					
Bachelor of Science	142	158	130	103	100
Pre-Major Dietetics					
Bachelor of Science		49	69	71	69
Pre-Major Technology					
Bachelor of Science	40	46	41	45	45
Professional Piloting					
Associate of Applied Science	20	16	30	38	38
Retail Management					
One Year Certificate				7	7
Structural Drafting					
One Year Certificate	2	1			
Technical Support					
Occupational Endorsement Certificate	4	2	1		1
Technology					
Bachelor of Science	34	34	32	35	48
Telecomm Electronics & Computer Technology					
Associate of Applied Science	66	69	22	5	3
Vocational Education					
Master of Science			1	1	1
Welding & Non-Destructive Testing Technology					
Associate of Applied Science	85	69	72	65	58
Welding					
Occupational Endorsement Certificate				1	4
Community & Technical College Total	1,430	1,531	1,460	1,468	1,367

Headcount Trends by Major, Degree Type, and Campus/College Fall Closing 2010 - 2014

Table 1.05

	2010	2011	2012	2013	2014
Anchorage Campus Non-Degree					
Exploratory Major/Undeclared					
Bachelor of Arts	906	887	860	900	683
Non-Degree Seeking	3,692	3,500	3,093	3,041	2,827
Pending Degree Seeking					
Graduate			7	10	19
Undergraduate	233	193	179	133	82
Total	233	193	186	143	101
Other					
Exchange Student	13	16	9	9	1
Inactivated Program	9	14	11	6	3
Total	22	30	20	15	4
Pre-Graduate					
Non-Degree Seeking					2
Anchorage Campus Non-Degree	4,853	4,610	4,159	4,099	3,617
Anchorage Campus Total	16,266	16,578	16,145	16,027	15,211
Kenai Peninsula College					
Computer Electronics					
Associate of Applied Science	13	11	10	9	4
Computer Info Office Systems					
Associate of Applied Science	7	15	12	9	6
Corrections					
One Year Certificate	7	5	3	3	1
Occupational Endorsement Certificate		2		1	2
Total	7	7	3	4	3
Digital Art					
Associate of Applied Science	19	16	14	12	11
General Business					
Associate of Applied Science	53	45	40	50	51
General Program					
Associate of Arts	259	288	269	227	231
Industrial Process Instrumentation					
Associate of Applied Science	40	45	38	52	49
Mechanical Technology					
Two Year Certificate	6	6	1		
Non-Degree Seeking					
Non-Degree Seeking	551	528	428	331	456
Pending Degree Seeking			1		
Total	551	528	429	331	456
Occupational Safety & Health					
Associate of Applied Science	62	76	86	98	94
Office Management & Technology					
Associate of Applied Science					1

Headcount Trends by Major, Degree Type, and Campus/College Fall Closing 2010 - 2014

Table 1.05

	2010	2011	2012	2013	2014
Paramedical Technology					
Associate of Applied Science	17	14	16	17	15
Pending Degree Seeking					
Non-Degree Seeking		1			
Pending Degree Seeking	11	8	11	10	13
Total	11	9	11	10	13
Petroleum Technology					
One Year Certificate				4	4
Two Year Certificate	4	7	7	3	1
Total	4	7	7	7	5
Pre-Major Paramedical Technology					
Associate of Applied Science	15	14	15	14	13
Process Technology					
Associate of Applied Science	197	183	197	214	247
Small Business Administration					
Associate of Applied Science	2		1	1	
Small Business Management					
One Year Certificate	4	7	3	1	1
Welding Technology					
One Year Certificate				12	24
Two Year Certificate	16	15	10	4	2
Total	16	15	10	16	26
Kenai Peninsula College Total	1,283	1,286	1,162	1,072	1,226
Kodiak College					
Accounting					
Associate of Applied Science	19	27	17	12	18
Bookkeeping					
Occupational Endorsement Certificate	1				
Bookkeeping Support					
Occupational Endorsement Certificate	1			1	
Computer Info Office Systems					
Associate of Applied Science	11	7	6	5	5
Computer Systems Technology					
Associate of Applied Science	3	3	5	2	
Construction Technology					
One Year Certificate	1		1	1	
General Business					
Associate of Applied Science	22	19	9	6	6
General Program					
Associate of Arts	73	87	90	110	110
Industrial Safety Program Support					
One Year Certificate	2	1	2	1	
Medical Office Support					
Occupational Endorsement Certificate				1	

Headcount Trends by Major, Degree Type, and Campus/College Fall Closing 2010 - 2014

Table 1.05

	2010	2011	2012	2013	2014
Kodiak College (continued)					
Non-Degree Seeking					
Non-Degree Seeking	246	209	170	135	138
Office Digital Media					
Occupational Endorsement Certificate		1	1	1	
Office Foundations					
Occupational Endorsement Certificate	3				
Office Support					
Occupational Endorsement Certificate	1				
Pending Degree Seeking					
Pending Degree Seeking	4	14	14	8	16
Technical Support					
Occupational Endorsement Certificate	1				
Technology					
Associate of Applied Science	9	13	16	16	9
Welding					
One Year Certificate	7	8	4	2	3
Kodiak College Total	404	389	335	301	305
Matanuska-Susitna College					
Accounting					
Associate of Applied Science	51	49	39	36	47
Architectural & Engineering Technology					
Associate of Applied Science	35	29	18	9	
Architectural Drafting					
One Year Certificate	1	5	1	1	
Bookkeeping Support					
Occupational Endorsement Certificate	1			1	1
Cisco Certification Network Associate					
Occupational Endorsement Certificate	1	1	5		
Commercial HVAC Systems					
Occupational Endorsement Certificate	1	2	1	2	1
Commercial Refrigeration					
Occupational Endorsement Certificate			1		
Computer Info Office Systems					
Associate of Applied Science	29	35	30	18	16
One Year Certificate	1				
Total	30	35	30	18	16
Computer Systems Technology					
Associate of Applied Science	48	32	22	22	17
General Business					
Associate of Applied Science	7	26	40	49	45
General Program					
Associate of Arts	431	455	392	403	386

Headcount Trends by Major, Degree Type, and Campus/College Fall Closing 2010 - 2014

Table 1.05

	2010	2011	2012	2013	2014
Human Services					
Associate of Applied Science	85	85	83	69	54
Mechanical & Electrical Drafting					
One Year Certificate	6	1			
Medical Office Supply					
Occupational Endorsement Certificate	2	2	1	1	
Non-Degree Seeking					
Non-Degree Seeking	474	427	358	360	254
Office Foundations					
Occupational Endorsement Certificate	2	2			
Office Support					
Occupational Endorsement Certificate	1	1	2		
Paramedical Technology					
Associate of Applied Science	7	11	14	18	17
Pending Degree Seeking					
Pending Degree Seeking	16	6	9	7	3
Pre-Major Paramedical Technology					
Associate of Applied Science	18	18	21	20	32
Refrigeration & Heating Technology					
Associate of Applied Science	19	19	19	17	12
Two Year Certificate	6	4	3	3	2
Total	25	23	22	20	14
Renewable Energy					
Occupational Endorsement Certificate	2				
Residential Air Conditioning & Refrigeration					
Occupational Endorsement Certificate		1	1	2	1
Residential Heating/Ventilation					
Occupational Endorsement Certificate		1	2		
Small Business Administration					
Associate of Applied Science	40	39	19	16	23
Sustainable Energy					
Occupational Endorsement Certificate				1	5
Telecomm, Electronics & Computer Technology					
Associate of Applied Science	2	1			
Veterinary Assisting					
Occupational Endorsement Certificate	31	37	21	19	11
Matanuska-Susitna College Total	1,317	1,289	1,102	1,074	927
Prince William Sound College					
Computer Info Office Systems					
Associate of Applied Science	10	10	11	7	5
Occupational Endorsement Certificate					1
Total	10	10	11	7	6
Direct Services Specialist					
Occupational Endorsement Certificate		2	13	7	8

Headcount Trends by Major, Degree Type, and Campus/College Fall Closing 2010 - 2014

Table 1.05

	2010	2011	2012	2013	2014
Prince William Sound College (continued)					
Disability Services					
Associate of Applied Science	22	23	43	31	19
Two Year Certificate	1	1	3	4	3
Total	23	24	46	35	22
General Program					
Associate of Arts	68	87	75	75	61
Industrial Technology					
Associate of Applied Science	16	11	16	18	17
Two Year Certificate		1	3	1	1
Total	16	12	19	19	18
Non-Degree Seeking					
Non-Degree Seeking	559	505	387	461	377
Outdoor Leadership					
Associate of Applied Science			4	5	8
Playwriting					
Associate of Fine Arts		1	2		
Theatre					
Associate of Applied Science	1				
Prince William Sound College Total	677	641	557	609	500
Other UA Programs					
UAF Programs	347	311	283	284	273
UAS Programs	265	205	241	262	207
UAA Total	20,559	20,699	19,825	19,629	18,649

Source: UA Statewide IR DSD data system at semester closing.

Notes:

1. Student distribution in this report is based on primary/home campus where students are officially admitted.
2. Headcount is unduplicated. Students who enrolled in multiple campuses have been counted only once in UAA Total.

Closing Headcount Trend by Campus/Term

Table 1.06

	Anchorage Campus			Kenai Peninsula College			Kodiak College		
	Summer	Fall	Spring	Summer	Fall	Spring	Summer	Fall	Spring
2005-06	6,062	14,924	14,516	228	1,638	1,586	52	561	665
2006-07	6,126	14,983	14,471	223	1,666	1,532	14	560	656
2007-08	5,913	15,250	14,479	266	1,580	1,668	115	540	670
2008-09	6,299	15,359	14,525	324	1,699	1,890	103	559	640
2009-10	6,786	15,662	15,397	344	1,983	2,146	183	513	725
2010-11	7,295	16,129	15,488	560	2,194	2,427	144	614	806
2011-12	7,273	16,205	5,537	807	2,784	2,702	217	755	940
2012-13	6,931	15,718	15,268	832	2,550	2,574	232	841	925
2013-14	6,682	15,640	14,573	747	2,523	2,613	263	796	968
2014-15	6,601	14,754	14,152	800	2,716	2,641	223	793	992

	Mat-Su College			Prince William Sound College			Total UAA		
	Summer	Fall	Spring	Summer	Fall	Spring	Summer	Fall	Spring
2005-06	171	1,572	1,478	714	1,378	2,191	7,279	19,685	20,040
2006-07	167	1,577	1,452	746	1,593	2,045	7,222	19,921	19,692
2007-08	169	1,535	1,630	823	1,223	1,653	7,207	19,674	19,486
2008-09	234	1,636	1,552	300	1,143	1,055	7,102	19,728	18,897
2009-10	248	1,782	1,798	253	1,286	1,283	7,646	20,368	20,242
2010-11	390	1,950	1,840	311	952	1,615	8,374	20,559	20,630
2011-12	441	2,134	1,944	518	957	1,731	8,642	20,699	20,879
2012-13	419	1,990	1,825	214	753	1,712	8,042	19,825	20,354
2013-14	473	1,914	1,822	175	834	1,328	7,711	19,629	19,205
2014-15	464	1,844	1,731	199	681	1,809	7,678	18,649	19,064

Source: UA Statewide IR DSD data system at semester closing.

Notes:

1. Included are students enrolled in credit courses at the 050 level and above, including auditors. Each campus reflects unduplicated student headcount.
2. Total UAA is unduplicated students who enrolled in multiple campuses have been counted only once.

Undergraduate Applied, Accepted, and Enrolled Students at UAA

Table 1.07

	Fall 2010	Fall 2011	Fall 2012	Fall 2013	Fall 2014
College of Arts & Sciences					
Applied	2,577	2,479	2,384	2,363	1,898
Accepted	2,043	1,751	1,857	1,883	1,527
Enrolled	1,393	1,350	1,264	1,218	1,018
Selectivity	79.3%	70.6%	77.9%	79.7%	80.5%
Yield	68.2%	77.1%	68.1%	64.7%	66.7%
College of Business & Public Policy					
Applied	532	574	561	499	532
Accepted	407	399	419	414	422
Enrolled	296	315	295	270	278
Selectivity	76.5%	69.5%	74.7%	83.0%	79.3%
Yield	72.7%	78.9%	70.4%	65.2%	65.9%
College of Education					
Applied	272	231	216	237	196
Accepted	205	165	166	192	154
Enrolled	144	126	115	119	106
Selectivity	75.4%	71.4%	76.9%	81.0%	78.6%
Yield	70.2%	76.4%	69.3%	62.0%	68.8%
College of Engineering					
Applied	394	385	489	467	540
Accepted	307	284	348	362	423
Enrolled	213	238	253	220	292
Selectivity	77.9%	73.8%	71.2%	77.5%	78.3%
Yield	69.4%	83.8%	72.7%	60.8%	69.0%
College of Health					
Applied	1,063	929	1,324	1,443	1,494
Accepted	785	663	1,002	1,132	1,184
Enrolled	507	460	644	690	786
Selectivity	73.8%	71.4%	75.7%	78.4%	79.3%
Yield	64.6%	69.4%	64.3%	61.0%	66.4%
Community & Technical College					
Applied	1,151	1,067	711	665	640
Accepted	870	757	552	501	475
Enrolled	581	548	361	327	322
Selectivity	75.6%	70.9%	77.6%	75.3%	74.2%
Yield	66.8%	72.4%	65.4%	65.3%	67.8%
Anchorage Campus					
Applied	5,989	5,665	5,685	5,674	5,300
Accepted	4,617	4,019	4,344	4,484	4,185
Enrolled	3,134	3,037	2,932	2,844	2,802
Selectivity	77.1%	70.9%	76.4%	79.0%	79.0%
Yield	67.9%	75.6%	67.5%	63.4%	67.0%

Undergraduate Applied, Accepted, and Enrolled Students at UAA

Table 1.07

	Fall 2010	Fall 2011	Fall 2012	Fall 2013	Fall 2014
Kenai Peninsula College					
Applied	382	330	381	331	336
Accepted	310	267	309	277	292
Enrolled	265	224	262	228	234
Selectivity	81.2%	80.9%	81.1%	83.7%	86.9%
Yield	85.5%	83.9%	84.8%	82.3%	80.1%
Kodiak College					
Applied	48	75	73	96	82
Accepted	45	72	69	76	69
Enrolled	40	56	62	67	61
Selectivity	93.8%	96.0%	94.5%	79.2%	84.1%
Yield	88.9%	77.8%	89.9%	88.2%	88.4%
Matanuska-Susitna College					
Applied	459	464	445	397	379
Accepted	408	397	350	320	308
Enrolled	337	321	294	256	248
Selectivity	88.9%	85.6%	78.7%	80.6%	81.3%
Yield	82.6%	80.9%	84.0%	80.0%	80.5%
Prince William Sound College					
Applied	82	67	72	87	96
Accepted	82	67	72	84	90
Enrolled	68	52	57	54	48
Selectivity	100.0%	100.0%	100.0%	96.6%	93.8%
Yield	82.9%	77.6%	79.2%	64.3%	53.3%
UAA Total					
Applied	6,503	6,925	6,636	6,596	6,567
Accepted	4,813	5,420	4,819	5,101	5,243
Enrolled	3,686	3,787	3,712	3,537	3,435
Selectivity	74.0%	78.3%	72.6%	77.3%	79.8%
Yield	76.6%	69.9%	77.0%	69.3%	65.5%

Source: UA Statewide IR DSD data system at semester closing.

Notes:

1. Included are applicants to Associate and Baccalaureate degree programs only.
2. An applicant may be counted more than once in the report due to application submissions to multiple programs in a given Fall semester.
3. Selectivity = Accepted / Applicants; it shows the percentage of total applications that were accepted into programs.
4. Yield = Enrolled / Accepted; it refers to the percent of total accepted that enrolled in the same Fall semester.

Graduate Applied, Accepted, and Enrolled Students at UAA

Table 1.08

	Fall 2010	Fall 2011	Fall 2012	Fall 2013	Fall 2014
College of Arts & Sciences					
Applied	99	129	107	91	134
Accepted	44	38	39	39	43
Enrolled	37	32	32	34	37
Selectivity	44.4%	29.5%	36.4%	42.9%	32.1%
Yield	84.1%	84.2%	82.1%	87.2%	86.0%
College of Business & Public Policy					
Applied	113	93	78	57	92
Accepted	79	65	50	30	51
Enrolled	55	46	35	20	41
Selectivity	69.9%	69.9%	64.1%	52.6%	55.4%
Yield	69.6%	70.8%	70.0%	66.7%	80.4%
College of Education					
Applied	67	52	59	49	41
Accepted	33	34	42	31	16
Enrolled	30	28	34	24	10
Selectivity	49.3%	65.4%	71.2%	63.3%	39.0%
Yield	90.9%	82.4%	81.0%	77.4%	62.5%
College of Engineering					
Applied	74	68	58	51	64
Accepted	53	47	32	29	37
Enrolled	41	34	21	22	30
Selectivity	71.6%	69.1%	55.2%	56.9%	57.8%
Yield	77.4%	72.3%	65.6%	75.9%	81.1%
College of Health					
Applied	80	92	108	102	78
Accepted	38	40	48	45	35
Enrolled	33	32	36	36	23
Selectivity	47.5%	43.5%	44.4%	44.1%	44.9%
Yield	86.8%	80.0%	75.0%	80.0%	65.7%
Community & Technical College					
Applied	4	4	6	4	1
Accepted	2	3	2	4	
Enrolled	2	3	1	3	
Selectivity	50.0%	75.0%	33.3%	100.0%	
Yield	100.0%	100.0%	50.0%	75.0%	
UAA Total					
Applied	437	438	416	354	410
Accepted	249	227	213	178	182
Enrolled	198	175	159	139	141
Selectivity	57.0%	51.8%	51.2%	50.3%	44.4%
Yield	79.5%	77.1%	74.6%	78.1%	77.5%

Source: Banner student information official statewide closing freeze, compiled by UAA IR.

Notes:

1. Included are applicants to Master's and PhD degree programs only.
2. An applicant may be counted more than once in the report due to application submissions to multiple programs in a given Fall semester.
3. Selectivity = Accepted / Applicants; it shows the percentage of total applications that were accepted into programs.
4. Yield = Enrolled / Accepted; it refers to the percent of total accepted that enrolled in the same Fall semester.

Enrollment & Student Credit Hours

Headcount, Credit Hours, Enrollment, Student FTE, and Course Sections by Campus

UAA Fall Closing 2014

Table 2.01

Course Level		UAA Total	Anchorage Campus	Kenai Peninsula	Kodiak College	Mat-Su College	PW Sound College
Student Headcount							
Total Credit Headcount		18,649.0	14,754.0	2,716.0	793.0	1,884.0	681.0
Full-time		7,708.0	6,022.0	385.0	53.0	438.0	51.0
Part-time		10,941.0	8,732.0	2,331.0	740.0	1,406.0	630.0
Full-time as a % of Total		41.3%	40.8%	14.2%	6.7%	23.2%	7.5%
All Students		19,134.0	14,918.0	2,886.0	857.0	1,868.0	749.0
(includes both credit and non-credit students)							
Credit Hours							
Developmental	(050-099)	6,239.5	4,213.0	816.0	219.0	921.0	70.5
Lower Division	(100-299)	119,742.0	88,346.5	14,152.0	3,108.0	11,508.0	2,627.5
Upper Division	(300-499)	30,530.5	29,626.5	607.0	83.0	214.0	
Professional	(500-599)	2,166.0	1,997.0	159.0	5.0		5.0
Graduate	(600-699)	6,286.0	6,286.0				
Credit Hours Total		164,964.0	130,469.0	15,734.0	3,415.0	12,643.0	2,703.0
Audited Hours		469.0	278.0	111.0	21.0	45.0	14.0
Enrollment (Seat Count)							
Developmental	(050-099)	2,067.0	1,354.0	274.0	73.0	315.0	51.0
Lower Division	(100-299)	43,126.0	31,882.0	4,899.0	1,178.0	4,138.0	1,029.0
Upper Division	(300-499)	10,276.0	9,966.0	206.0	34.0	70.0	
Professional	(500-599)	1,478.0	1,391.0	77.0	5.0		5.0
Graduate	(600-699)	2,186.0	2,186.0				
Enrollment Total		59,133.0	46,779.0	5,456.0	1,290.0	4,523.0	1,085.0
Student FTE							
Developmental	(050-099)	416.0	280.9	54.4	14.6	61.4	4.7
Lower Division	(100-299)	7,982.8	5,889.8	943.5	207.2	767.2	175.2
Upper Division	(300-499)	2,035.4	1,975.1	40.5	5.5	14.3	
Professional	(500-599)	180.5	166.4	13.3	0.4		0.4
Graduate	(600-699)	523.8	523.8				
Student FTE Total		11,138.5	8,836.0	1,051.6	227.8	842.9	180.3
Course Sections							
Developmental	(050-099)	107.0	59.0	17.0	6.0	16.0	9.0
Lower Division	(100-299)	2,707.0	1,828.0	330.0	96.0	333.0	120.0
Upper Division	(300-499)	882.0	843.0	28.0	2.0	9.0	
Professional	(500-599)	140.0	133.0	5.0	1.0		1.0
Graduate	(600-699)	416.0	416.0				
ABE		18.0		8.0	2.0		8.0
CEU		32.0	17.0	3.0		8.0	4.0
Non-Credit		28.0	15.0	6.0	4.0	2.0	1.0
Course Sections Total		4,330.0	3,311.0	397.0	111.0	368.0	143.0
Cancelled Credit Courses		228.0	142.0	31.0	17.0	26.0	12.0

Source: Statewide Institutional Research (IR) Decision Support Database (DSD) data system at semester closing freeze.

Notes:

1. Headcount is unduplicated and includes auditors.
2. Total Course Sections do not include cancelled sections. Cancelled sections are those cancelled after students enrolled.
3. Audited Hours are not included in student credit hours.

Student Credit Hours by Discipline within Campus/College Fall Semesters 2010 - 2014

Table 2.02

	Fall 2010	Fall 2011	Fall 2012	Fall 2013	Fall 2014
Anchorage Campus					
Academic Affairs					
Counseling	45	23	24	43	27
Guidance	935	1,035	978	1,047	873
Total	980	1,058	1,002	1,090	900
College of Arts & Sciences					
Alaska Native Studies	490	456	519	433	393
American Sign Language	657	860	836	752	744
Anthropology	2,154	2,200	2,550	2,390	2,166
Art	2,975	3,037	2,867	2,658	2,308
Astronomy	233	439	475	455	464
Biology	7,476	7,323	6,993	7,043	6,836
Chemistry	3,218	3,337	3,463	3,616	3,725
Chinese	164	204	184	188	235
Communication	3,075	2,697	2,616	2,337	2,493
Creative Writing & Literary Arts	362	262	275	319	195
Dance	624	633	681	622	620
English	6,392	6,250	6,772	7,195	6,995
Environmental Studies	289	412	374	376	378
French	761	769	766	599	624
Geography	681	132	264	303	429
Geology	1,360	1,625	1,710	1,538	1,664
German	593	596	564	507	512
History	2,787	3,036	3,102	3,153	2,973
Humanities	276	264	228	84	87
Interdisciplinary Studies	168	217	144	169	234
International Studies	138	45	96	90	85
Japanese	774	778	696	704	769
Journalism & Public Communication	1,185	1,048	1,025	945	778
Liberal Studies: Integrated Core	246	219	186	129	87
Liberal Studies: Integrated Science	566	535	365	525	395
Liberal Studies: Social Science	252	225	252	60	
Library Science	19	31	65	16	83
Linguistics	150	231	201	111	255
Mathematics	8,200	8,278	7,964	7,748	7,490
Music	2,104	2,081	2,399	2,500	2,432
National Student Exchange	324	228	366	225	393
Philosophy	1,920	2,070	2,349	2,493	2,438
Physics	1,400	1,675	1,994	2,111	2,327
Political Science	1,888	1,740	1,629	1,428	1,038
Psychology	6,299	6,303	5,429	5,650	6,033
Russian	398	374	350	348	324
Sociology	2,088	1,845	1,707	1,356	1,267
Spanish	1,654	1,730	1,571	1,508	1,449
Statistics	716	808	869	959	991
Theater	894	918	903	785	762
Women's Studies	129	117	261	294	255
Total	66,079	66,028	66,060	64,722	63,726

Student Credit Hours by Discipline within Campus/College

Fall Semesters 2010 - 2014

Table 2.02

	Fall 2010	Fall 2011	Fall 2012	Fall 2013	Fall 2014
College of Business & Public Policy					
Accounting	2,607	2,601	2,922	2,844	2,736
Business Administration	6,270	5,403	5,496	5,377	5,294
Computer Info System	2,064	2,193	2,196	2,046	2,160
Economics	1,954	2,111	2,451	2,184	2,271
Logistics	138	138	93	228	222
Logistics Operation	213	165	186	231	246
Public Administration	390	324	287	178	226
Total	13,636	12,935	13,631	13,088	13,155
College of Education					
Education: Counselor Education	194	162	225	261	171
Education: Dev & Leadership	1,175	1,118	991	903	641
Education: Early Childhood	742	858	1,085	1,147	1,042
Education: Elementary Education	244	449	308	430	526
Education: Secondary Education	384	433	416	288	179
Education: Foundations	466	457	423	511	530
Education: Physical Education	53	18		31	
Education: Research	132	126	192	144	130
Education: Special Education	1,286	1,147	884	821	942
Education	1,009	1,106	812	1,838	1,271
Speech Language Path					159
Total	5,685	5,874	5,336	6,374	5,591
College of Engineering					
Civil Engineering	845	816	971	902	801
Computer Science	782	855	1,036	1,171	1,323
Computer Systems Engineering	276	373	376	66	114
Electrical Engineering	310	355	543	663	724
Engineering Science Mgmt	183	210	249	288	300
Engineering	1,376	1,366	607	596	608
Engineering Science	1,052	1,257	1,062	1,158	1,247
Environmental Science & Tech	132	121	134	109	101
Geographic Info System	153	235	304	216	144
Geomatics	632	701	657	614	285
Mechanical Engineering	414	537	429	492	497
Project Management	507	387	415	312	405
Total	6,662	7,213	6,783	6,587	6,549
College of Health					
Biomedical Program-WWAMI	520	437	460	500	520
Civic Engagement & Learning	90	183	171	111	120
Dental Assisting	293	234	371	345	334
Dental Hygiene	401	438	460	452	381
Diagnostic Medical Sonography			100	81	57
Dietetics & Nutrition					1
Disability & Long Term Support	84	109	64	42	49
Emergency Medical Technology	531	372	438	405	420
Fire Science	327	354	291	306	316

Student Credit Hours by Discipline within Campus/College

Fall Semesters 2010 - 2014

Table 2.02

	Fall 2010	Fall 2011	Fall 2012	Fall 2013	Fall 2014
Anchorage Campus - College of Health (continued)					
Health	27	51	87	54	36
Health Care Assisting	248	176	208	112	112
Health Science	823	768	950	1,172	1,262
Human Services	1,346	1,181	1,163	1,220	1,174
Justice	1,973	2,130	1,861	1,713	1,710
Legal Studies			432	561	522
Medical Assisting	780	866	834	824	845
Medical Laboratory Technology	545	617	675	639	648
Nursing	1,738	1,911	2,220	2,352	2,107
Nursing Science	2,699	2,721	2,706	3,005	2,962
Paralegal	300	282			
Pharmacy Technology	246	285	300	204	210
Radiologic Technology	462	405	431	394	437
Social Work	1,308	1,460	1,271	1,319	1,482
Total	14,741	14,980	15,493	15,811	15,705
Community & Technical College					
Accounting	198	186	120	144	165
Air Force ROTC	198	159	148	116	84
Air Traffic Control	652	622	567	585	356
American Sign Language	144	164	124	132	96
Anthropology	468	477	396	606	363
Architectural Engineer Technology	610	597	530	563	545
Art	411	408	369	252	213
Auto-Diesel Technology	1,033	1,025	814	915	747
Aviation Maintenance Technology	842	945	875	1,075	1,182
Aviation Tech/Admin/Management	1,604	1,404	1,388	1,272	1,209
Aviation/Professional Piloting	580	516	564	447	486
Biology	284	235	286	281	371
Business Administration	222	303	210	333	243
Career & Technical Education	174	144	119	84	29
Chemistry	111	87	162	180	177
Communication	738	771	654	621	612
Computer Info System	138	138	12	171	150
Computer Network Technology	986	994	895	992	1,175
Computer Office System	1,152	1,039	1,136	590	288
Construction Management	833	759	770	857	743
Creative Writing & Literary Arts			93	78	
Culinary Arts	658	725	704	522	596
Dietetics & Nutrition	1,381	1,373	1,346	1,235	1,200
Economics	150	153	180	237	192
English	1,623	1,677	1,617	1,833	1,530
English as Second Language	735	1,032	504	519	534
Environmental Studies	42				
Geography	81	180	207	183	96
Geology	112	84	208	168	159
History	1,212	1,215	996	921	708
Human Services				18	
Interior Design	39	30	30		
Justice	96	75	78	42	12

Student Credit Hours by Discipline within Campus/College Fall Semesters 2010 - 2014

Table 2.02

	Fall 2010	Fall 2011	Fall 2012	Fall 2013	Fall 2014
Latin	24	36	30		
Mathematics	3,791	4,497	4,386	4,241	3,937
Military Science	140	175	113	83	128
Music	105	105	117	90	90
Physical Education & Recreation	1,211	1,114	866	842	744
Philosophy	348	345	168	429	282
Physical Education Professional	921	1,178	1,054	792	744
Physical Education	61	64	23	22	16
Political Science	30	57	21	51	96
Preparatory English	3,731	4,089	4,044	3,380	2,585
Psychology	489	516	561	555	339
Sociology	162	207	84	39	
Spanish	196	196	244	164	124
Statistics	474	318	297	243	195
Technology	199	162	120	128	237
Vocational Education	9				
Welding Technology	956	890	789	725	775
Total	30,354	31,466	29,019	27,756	24,553
Honors College					
Complex Systems			42	45	42
Honors	301	328	300	276	249
Total	301	328	342	321	291
Anchorage Campus Total	138,438	139,882	137,666	135,749	130,469
Kenai Peninsula College					
Anchorage Extension Site					
Electronics Technology			30	21	40
Occupational Safety & Health	683	508	614	650	799
Process Technology	414	467	521	614	598
Technology	3	21	6		3
Total	1,100	996	1,171	1,285	1,440
Kachemak Bay Campus					
Alaska Native Studies					4
Accounting	111	72	120	105	
Agriculture	15				
American Sign Language				20	20
Anthropology	159	129	117	108	141
Art	145	51	151	129	201
Biology	126	214	192	160	338
Business Administration		81	66	246	177
Chemistry	134	139	127	88	73
Commun Education			4		
Communication	141	171	153	156	174
Computer Info System	81	63			
Computer Office System	146	150	103	27	24
Computer Science				126	63
Creative Writing & Literary Arts	24	34	61	6	
Culinary Arts	15				

Student Credit Hours by Discipline within Campus/College

Fall Semesters 2010 - 2014

Table 2.02

	Fall 2010	Fall 2011	Fall 2012	Fall 2013	Fall 2014
Kenai Peninsula College - Kachemak Bay Campus (continued)					
Dance				18	
Dietetics & Nutrition			78	72	144
Economics					18
Education: Elementary Education		3	3		12
Education: Special Education			6		
Education	31	10	6	7	10
Emergency Medical Technology		3	12	18	72
English	129	135	192	144	222
Environmental Studies		63	42		
Fire Science	12	36	12		
Geography				33	
Geology	4	8	5	8	4
Guidance	36	18	18		
Health Care Assisting	60	60	60	54	60
Health Science		48	57	54	60
History	129	141	75	90	36
Human Services	39	90	75	81	129
Humanities			27		18
Japanese					20
Justice	105	144	129	105	105
Library Science	4			1	2
Linguistics			57	60	
Mathematics	181	231	232	157	220
Medical Assisting	24	18			30
Music	45	57	24	66	
Physical Education & Recreation	20	18	26	5	23
Paralegal		21			
Political Science	24		30	24	42
Preparatory English	54	30	51	39	45
Process Technology					6
Psychology	96	177	161	177	209
Social Work	3				36
Sociology					60
Spanish	32				
Statistics		28		32	
Theater					48
Welding Technology	28	44		28	48
Total	2,153	2,487	2,472	2,444	2,894
Kenai River Campus					
Alaska Native Studies					89
Accounting	174	255	261	219	186
American Sign Language	102	116	100	44	
Anthropology	141	135	165	183	216
Art	505	494	429	361	390
Auto-Diesel Technology	18	30			
Biology	354	475	393	501	425
Business Administration	225	240	141	246	270
Chemistry	572	561	562	561	703
Community Education	49	17	8	11	16

Student Credit Hours by Discipline within Campus/College

Fall Semesters 2010 - 2014

Table 2.02

	Fall 2010	Fall 2011	Fall 2012	Fall 2013	Fall 2014
Communication	414	522	495	513	522
Computer Info System	168	138	282	327	213
Computer Network Technology				40	44
Computer Office System	51	87	58	12	
Computer Science	54	39	33	27	42
Creative Writing & Literary Arts	33	81	51	24	
Dietetics & Nutrition		63		126	132
Economics	69	75	57	42	39
Education: Early Childhood	99	120	69	102	129
Education: Elementary Education	12	20	19	6	12
Education: Foundations	15	3		30	
Education: Special Education		3		7	
Education	51	62	41	16	149
Electronics Technology	129	159	116	142	153
Emergency Medical Technology	90	72	78	72	72
Engineering Draft-Design		4			
Engineering			10		
English	927	1,311	1,194	1,119	1,314
English as Second Language	33	48			
Environmental Studies					48
Fire Science				69	69
French			48	40	44
Geology	52	217	220	222	44
Guidance	36	60			12
Health Care Assisting	66	60	60	54	60
History	243	321	417	225	261
Human Services	99	96	126	87	105
Humanities		66	54		21
Japanese	92	52	36	56	60
Journalism & Public Communication		63	36	36	
Justice	114	174	144	108	99
Liberal Studies: Integrated Core	75				
Liberal Studies: Integrated Science	0		0		0
Library Science	3	6	4	6	9
Logistics Operation					48
Mathematics	1,618	1,907	1,958	1,878	2,069
Mechanical Technology	110	39			
Medical Assisting	33	51	60	57	33
Music	107	170	120	105	93
Occupational Safety & Health	32	72	28	76	
PE & Recreation	7	9	20	16	9
Paramedical Technology	216	168	168	168	180
Petroleum Technology	124	147	72	102	184
Philosophy	54	48	93	36	30
Physics	120	163	238	322	304
Political Science	51	63	27		21
Preparatory English	339	492	363	204	80
Process Technology	789	868	1,023	917	1,042
Psychology	476	497	494	587	387
Russian		52	52	44	36
Social Work			45		

Student Credit Hours by Discipline within Campus/College Fall Semesters 2010 - 2014

Table 2.02

	Fall 2010	Fall 2011	Fall 2012	Fall 2013	Fall 2014
Kenai Peninsula College - Kenai River Campus (continued)					
Sociology	42	174	192	207	150
Spanish	132	120	92	80	112
Statistics	192	240	243	260	317
Technology	6				
Welding Technology	218	192	146	162	200
Women's Studies		48		48	39
Total	9,731	11,765	11,141	10,903	11,282
Ressurrection Bay Extension Site					
Business Administration	21				
Education	5	6			
English	48	36	45	24	33
Mathematics					36
Physical Education & Recreation	8	8	9		13
Political Science	60	30			36
Preparatory English	15	75	21	39	
Total	157	155	75	63	118
Kenai Peninsula College Total	13,141	15,403	14,859	14,695	15,734
Kodiak College					
Alaska Native Studies			96	84	43
Accounting	123	180	219	174	114
Agriculture	13	11			
Anthropology				123	111
Architectural Engineer Technology	24			6	36
Art	78	121	100	72	111
Biology	304	328	296	338	363
Business Administration	66	336	255	228	249
Chemistry	47	51		56	60
Communication	69	63	99	69	72
Computer Info System	45	69	63	108	186
Computer Network Technology	12		6		
Computer Office System	199	181	274	218	189
Construction Management	42			17	16
Creative Writing & Literary Arts	8				
Economics	48	75	60	87	42
Education: Early Childhood	39	42	78	90	135
Education: Elementary Education		29	21	40	16
Education: Dev & Leadership			33		
Education: Special Education	49	48	42	42	48
Education	116	51	22	19	5
English	258	297	483	456	321
Environmental Studies		30	51	49	38
Guidance	39	42	36	36	54
History	27	51	45	54	24
Human Services				9	27
Humanities	45		12	54	33
Journalism & Public Communication	9				
Liberal Studies: Integrated Core					45

Student Credit Hours by Discipline within Campus/College

Fall Semesters 2010 - 2014

Table 2.02

	Fall 2010	Fall 2011	Fall 2012	Fall 2013	Fall 2014
Liberal Studies: Integrated Science	50		190	35	40
Library Science		1			
Logistics Operation				42	
Mathematics	246	270	297	282	273
Medical Assisting		45		66	101
Music	60	73	78	42	24
Occupational Safety & Health	82	112	112	81	53
Physical Education & Recreation	69	52	36	26	15
Philosophy		39	24	51	33
Political Science			66		
Preparatory English	119	177	150	87	111
Psychology	72	157	143	83	158
Renewable Energy			33	12	
Russian		64	68	48	
Social Work				6	36
Sociology	105	87	78	159	114
Spanish	24				
Statistics				33	42
Technology	6	58		5	1
Vocational Skills		36			
Welding Technology	62	100	87	46	76
Kodiak College Total	2,555	3,276	3,653	3,533	3,415
Matanuska-Susitna College					
Accounting	240	228	318	321	372
American Sign Language	189	240	224	220	196
Anthropology	339	390	378	303	447
Architectural Engineer Technology	209	206	132		
Art	558	651	662	592	579
Biology	682	911	919	890	936
Business Administration	627	723	630	618	591
Chemistry	364	453	483	482	440
Communication	189	342	321	324	396
Computer Info System	99	96	114	99	105
Computer Network Technology	372	476	379	417	369
Computer Office System	1,168	1,019	821	751	573
Computer Science		36	45	36	39
Construction Management	47	42	24		
Counseling	16	14	15	11	
Creative Writing & Literary Arts	60	66	54	42	
Dietetics & Nutrition		84	66	36	36
Economics	102	117	144	144	171
Education: Early Childhood	27	30	87	51	96
Education: Elementary Education	60	90	45	48	34
Education: Foundations	132	77	59	69	70
Education	1				
Emergency Medical Technology	156	243	156	198	156
Engineering	18	36	9	18	32
English	762	885	810	897	1,056
Environmental Studies	105				
French	64	52	76	44	64

Student Credit Hours by Discipline within Campus/College Fall Semesters 2010 - 2014

Table 2.02

	Fall 2010	Fall 2011	Fall 2012	Fall 2013	Fall 2014
Matanuska-Susitna College (continued)					
Geography	138				
Geology	82	83	84	68	57
History	801	894	978	930	720
Honors		30	27		
Human Services	396	420	291	267	258
Humanities	48	63	48	21	42
Interior Design	69	57	48		24
Japanese		72	112	56	104
Justice	147	114	87	117	96
Liberal Studies: Integrated Core				69	
Liberal Studies: Integrated Science	100	110	125	75	45
Liberal Studies: Social Science	48	54	42	27	30
Library Science	8				
Logistics Operation				24	42
Mathematics	1,541	1,592	1,698	1,867	1,643
Medical Assisting	120	105	117	108	108
Music	174	183	132	66	63
Paramedical Technology	72	192	252	252	216
Philosophy	162	228	306	207	345
Physics	203	236	193	188	194
Political Science	90	48	33	42	30
Preparatory English	1,032	993	903	642	498
Psychology	652	730	663	669	576
Refrigeration & Heating	304	312	397	318	222
Renewable Energy	169		27	49	63
Russian	36	56	72	52	40
Social Work	12				24
Sociology	243	183	156	225	84
Spanish	92	144	156	76	148
Statistics	42	63	69	93	87
Theater	69	48	51	48	48
Veterinary Assisting	173	194	190	199	78
Matanuska-Susitna College Total	13,609	14,711	14,228	13,366	12,643
Prince William Sound College					
Accounting	15	3	30		18
Anthropology	81	84	48	30	30
Applied Statistics		6			
Art	144	45	102	87	24
Astronomy				36	40
Biology	54	105	51	104	24
Business Administration	6	15	63		27
Chemistry	20	16	56		54
Civic Engagement & Learning	15			30	
Communication	132	143	141	102	78
Computer Network Technology	1	6	4		
Computer Office System	113	140	89	52	29
Dietetics & Nutrition				33	54
Economics	12			54	

Student Credit Hours by Discipline within Campus/College

Fall Semesters 2010 - 2014

Table 2.02

	Fall 2010	Fall 2011	Fall 2012	Fall 2013	Fall 2014
Education: Physical Education	9				
Education	39			17	5
English	357	345	225	276	216
Environmental Studies		32	40		
Film					18
French		80			
Geography	12				
Geology	56	96	50	34	76
Guidance	57	63	54	102	42
Health Science	76	100	99	86	16
History	162	105	78	90	60
Human Services	170	203	209	103	145
Humanities		78		36	15
Industrial Technology	547	527	483	195	300
Justice				21	27
Liberal Studies: Social Science				12	24
Marine Technology	55	90	60	402	302
Mathematics	274	385	256	292	207
Medical Assisting	48	39	36	72	87
Museum Studies				9	
Music	57	90	45	21	33
Outdoor Studies		65	48	56	66
Physical Education & Recreation	33	45	24	54	24
Philosophy			18	48	
Political Science	96	84	84	60	39
Psychology	111	171	144	102	123
Reading	27	24			
Sociology	57	21	27	39	75
Spanish			16		
Statistics					45
Theater	61	90	33		15
Total	2,897	3,296	2,612	2,654	2,338
Copper Basin Extension Center					
Biology		8			
Chemistry	16		8		
Civic Engagement & Learning	21				
Communication	6	9	9		
Computer Office System	65	41	50		
Emergency Medical Technology		9			
English	42	21	33	21	15
French		8			
Geography	6				
Geology	9	12			
Guidance	15		9		
Health Science		9	30		
History	15		3	12	
Mathematics	38	88	67		28
Music				2	
Outdoor Studies		3			

Student Credit Hours by Discipline within Campus/College Fall Semesters 2010 - 2014

Table 2.02

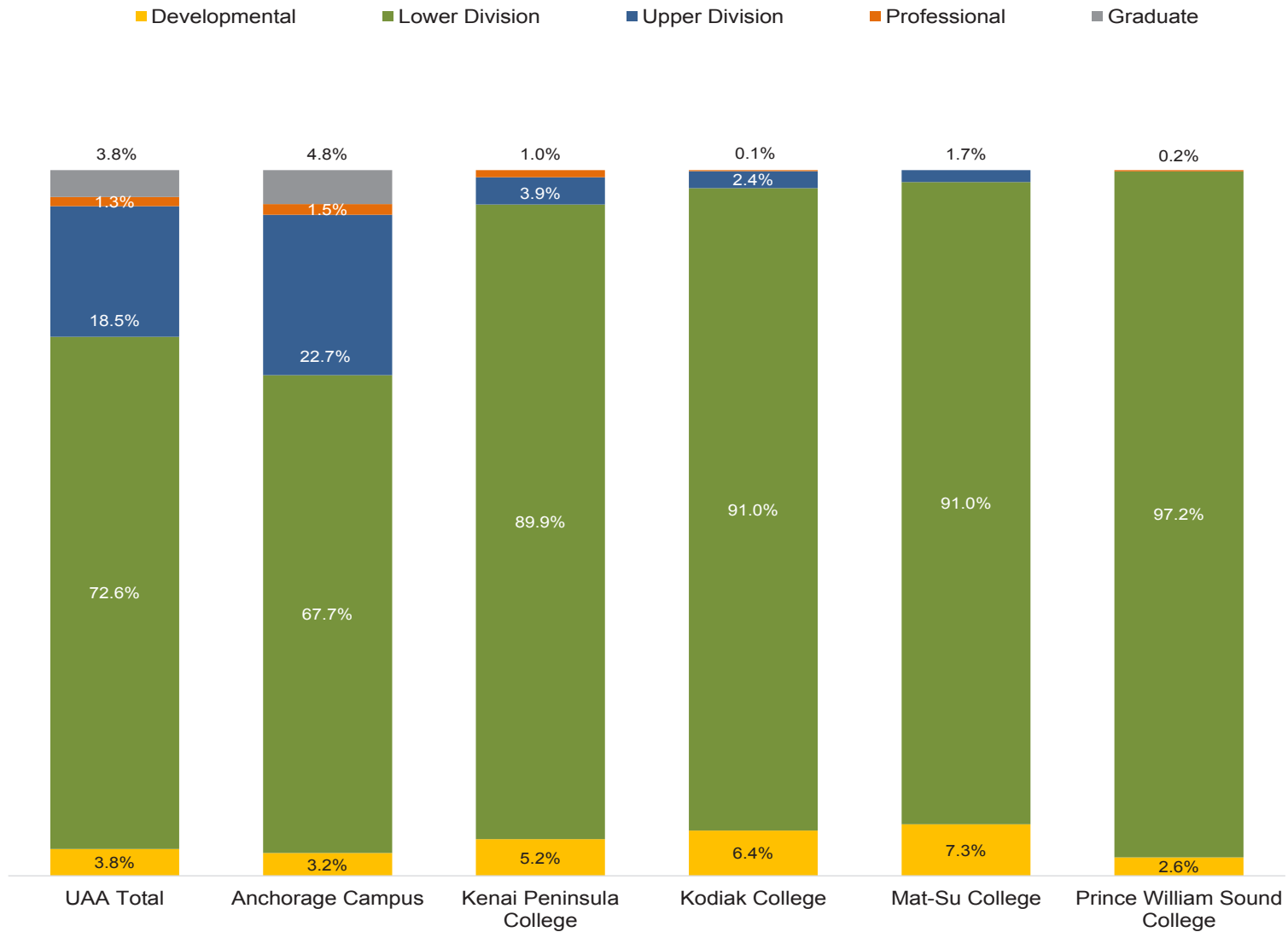
	Fall 2010	Fall 2011	Fall 2012	Fall 2013	Fall 2014
Prince William Sound College - Copper Basin Extension Center (continued)					
Psychology	12	3			
Reading		9			
Sociology	3	9	10		
Spanish			12		
Total	248	229	231	35	43
Cordova Extension Center					
Art	65	77	109	111	174
Biology	5	4	64		
Business Administration	3				
Chemistry	3		4		
Communication			3		
Computer Office System	13				
English	12	36	24	9	
Health Science	62	6	6		
Mathematics	63	25	154		
Psychology	6				
Sociology			7	36	
Spanish	64	80	126	148	148
Total	296	228	497	304	322
Prince William Sound College Total	3,441	3,753	3,340	2,993	2,703
UAA Total	171,183	177,025	173,746	170,336	164,964

Source: Statewide IR DSD data system at semester closing freeze.

Notes:

1. Student credit hours are based on course level, representing credit courses at the 050 level and above, and does not include auditors.
2. Totals may not equal the sum of all categories due to rounding.

Student Credit Hours by Course Level and Campus, Fall 2014



Student Credit Hour Trend by Semester and Campus, AY 1991 - 2015

Table 2.03

Year	Anchorage Campus					Kenai Peninsula College					Kodiak College				
	Summer	Fall	Spring	Annual	% +/- over Prev Year	Summer	Fall	Spring	Annual	% +/- over Prev Year	Summer	Fall	Spring	Annual	% +/- over Prev Year
1990-91	22,484	110,821	105,934	239,238	6%	712	8,055	9,564	18,331	7%	22	2,640	2,130	4,792	18%
1991-92	23,737	117,208	111,203	252,148	5%	489	9,082	9,863	19,434	6%	47	2,634	2,617	5,298	11%
1992-93	27,089	115,611	113,728	256,428	2%	382	9,542	10,049	19,973	3%	22	2,237	2,718	4,977	-6%
1993-94	27,709	115,606	110,136	253,451	-1%	483	10,047	10,684	21,214	6%	58	2,688	2,860	5,606	13%
1994-95	26,250	114,612	107,170	248,031	-2%	692	9,347	9,880	19,919	-6%	12	2,633	3,126	5,771	3%
1995-96	24,913	108,247	103,925	237,084	-4%	562	9,428	9,173	19,163	-4%	24	2,732	3,156	5,912	2%
1996-97	23,423	106,185	101,807	231,415	-2%	593	9,537	10,058	20,188	5%	94	2,560	2,492	5,146	-13%
1997-98	25,674	102,048	100,960	228,682	-1%	193	8,796	8,968	17,957	-11%	105	2,271	2,485	4,861	-6%
1998-99	24,926	104,520	97,612	227,058	-1%	311	9,027	8,682	18,020	0%	68	2,385	2,162	4,615	-5%
1999-00	25,275	104,154	96,451	225,880	-1%	426	7,943	8,183	16,552	-8%	135	2,168	2,241	4,544	-2%
2000-01	22,478	103,783	98,054	224,315	-1%	607	8,602	9,084	18,293	11%	65	2,909	2,862	5,836	28%
2001-02	23,762	106,149	102,242	232,153	4%	760	9,712	9,362	19,834	8%	153	2,998	3,095	6,246	7%
2002-03	23,133	112,999	109,799	245,930	6%	359	9,274	9,065	18,698	-6%	115	3,080	3,622	6,817	9%
2003-04	27,493	119,871	116,406	263,769	7%	727	9,509	8,396	18,632	0%	137	2,935	3,120	6,192	-9%
2004-05	29,718	124,891	117,540	272,148	3%	489	8,958	8,904	18,351	-2%	101	2,406	2,529	5,036	-19%
2005-06	29,397	127,294	120,947	277,638	2%	567	9,277	8,972	18,816	3%	157	2,215	2,639	5,011	-1%
2006-07	29,102	129,625	120,528	279,254	1%	782	9,883	9,230	19,895	6%	37	2,220	2,442	4,699	-6%
2007-08	28,575	129,803	121,429	279,807	0%	885	9,567	9,708	20,160	1%	141	2,345	2,957	5,443	16%
2008-09	30,409	131,305	123,090	284,803	2%	1,228	10,137	10,707	22,072	10%	188	2,387	2,696	5,271	-3%
2009-10	31,438	135,284	128,769	295,490	4%	1,326	12,270	12,901	26,497	20%	466	2,027	3,000	5,493	4%
2010-11	33,916	138,504	130,713	303,132	3%	2,116	13,141	13,815	29,072	10%	400	2,555	3,652	6,607	20%
2011-12	33,418	139,882	132,334	305,633	1%	3,040	15,403	15,301	33,744	16%	648	3,276	4,134	8,058	22%
2012-13	32,196	137,666	130,075	299,937	-2%	3,237	14,859	14,755	32,851	-3%	733	3,653	3,876	8,262	3%
2013-14	31,078	135,749	124,372	291,199	-3%	2,792	14,695	14,840	32,327	-2%	784	3,533	4,293	8,610	4%
2014-15	29,491	130,469	122,128	282,088	-3%	3,030	15,734	14,823	33,587	4%	699	3,415	4,201	8,315	-3%

Student Credit Hour Trend by Semester and Campus, AY 1991 - 2015

Table 2.03

Year	Matanuska-Susitna College					Prince William Sound College					Total UAA				
	Summer	Fall	Spring	Annual	% +/- over Prev Year	Summer	Fall	Spring	Annual	% +/- over Prev Year	Summer	Fall	Spring	Annual	% +/- over Prev Year
1990-91	495	8,342	8,144	16,981	5%	209	2,001	1,877	4,087	4%	24,389	135,530	130,998	290,916	7%
1991-92	433	9,322	9,659	19,414	14%	314	1,877	1,853	4,044	-1%	25,895	143,720	139,097	308,711	6%
1992-93	800	10,425	10,464	21,689	12%	314	2,616	2,932	5,862	45%	29,780	144,348	143,496	317,623	3%
1993-94	815	9,475	9,396	19,686	-9%	471	2,999	3,679	7,148	22%	30,522	144,349	139,465	314,336	-1%
1994-95	480	10,021	10,557	21,058	7%	722	3,413	3,550	7,685	8%	28,835	142,704	137,294	308,833	-2%
1995-96	1,363	9,774	9,934	21,071	0%	376	3,625	3,671	7,671	0%	28,047	136,594	132,454	297,095	-4%
1996-97	1,437	8,997	10,136	20,570	-2%	508	3,987	4,351	8,846	15%	26,945	133,675	131,041	291,661	-2%
1997-98	1,390	8,690	9,166	19,246	-6%	364	4,364	4,392	9,120	3%	28,542	128,275	128,302	285,119	-2%
1998-99	1,211	8,289	8,515	18,015	-6%	808	4,484	3,930	9,221	1%	28,080	130,313	123,104	281,497	-1%
1999-00	1,295	8,853	9,935	20,083	12%	760	4,103	4,013	8,875	-4%	28,472	128,644	122,331	279,447	-1%
2000-01	1,024	9,102	8,735	18,861	-6%	935	3,887	4,355	9,177	3%	25,559	130,199	124,875	280,633	0%
2001-02	920	9,614	10,033	20,567	9%	897	3,785	4,472	9,153	0%	27,183	133,997	130,946	292,125	4%
2002-03	1,541	10,445	11,036	23,022	12%	988	4,709	4,766	10,463	14%	26,651	142,393	140,069	309,113	6%
2003-04	1,395	11,335	10,696	23,426	2%	1,132	4,417	5,736	11,284	8%	31,545	149,632	145,849	327,026	6%
2004-05	690	10,099	9,379	20,168	-14%	657	4,384	5,112	10,153	-10%	32,020	152,121	144,454	328,596	1%
2005-06	569	10,579	9,493	20,641	2%	913	3,911	4,719	9,542	-6%	32,056	153,276	146,770	332,101	1%
2006-07	592	10,323	9,246	20,161	-2%	937	4,454	4,986	10,378	9%	31,450	156,505	146,432	334,386	1%
2007-08	567	10,461	9,870	20,898	4%	1,258	3,805	4,324	9,388	-10%	31,426	155,981	148,288	335,695	0%
2008-09	841	10,699	9,936	21,476	3%	418	3,696	3,050	7,164	-24%	33,083	158,224	149,478	340,786	2%
2009-10	977	12,271	11,985	25,233	18%	484	4,187	3,757	8,428	18%	34,691	166,038	160,412	361,141	6%
2010-11	1,778	13,609	12,751	28,138	12%	642	3,441	4,441	8,524	1%	38,852	171,249	165,372	375,473	4%
2011-12	1,847	14,711	13,421	29,979	7%	1,091	3,754	4,279	9,122	7%	40,043	177,025	169,469	386,536	3%
2012-13	1,912	14,228	12,361	28,501	-5%	552	3,340	4,270	8,162	-11%	38,630	173,746	165,337	377,712	-2%
2013-14	2,084	13,366	12,407	27,857	-2%	345	2,993	3,839	7,177	-12%	37,083	170,336	159,751	367,170	-3%
2014-15	2,112	12,643	11,225	25,980	-7%	434	2,703	4,293	7,430	4%	35,766	164,964	156,670	357,400	-3%

Source: Statewide IR DSD data system at semester closing freeze.

Notes:

1. Student Credit Hours are based on credit courses at the 050 course level and above, and do not include auditors.
2. For Fall 1996, University of Alaska Learning Cooperative (UALC) and/or Rural Delivery (RD) credit headcount is included in the Anchorage column.
3. Prior to AY 2005, Total UAA includes SCH generated by Military Programs.

e-Learning: Origin of Courses vs. Origin of Students Admitted, AY 2011 - 2015

Table 2.04

By Campus that Provides Distance Courses	Student Headcount, Seat Count and Student Credit Hours by Matriculation Campus																				
	Headcount							Enrollment (Seat Count)							SCH with AU						
	Anchorage	Kenai	Kodiak	Mat-Su	PWSC	Non UAA	TOTAL	Anchorage	Kenai	Kodiak	Mat-Su	PWSC	Non UAA	TOTAL	Anchorage	Kenai	Kodiak	Mat-Su	PWSC	Non UAA	TOTAL
Anchorage Campus																					
2010-2011	6,947	117	19	116	5	248	7,423	13,571	174	26	183	6	304	14,264	38,674	461	66	525	15	779	40,520
2011-2012	7,024	128	32	154	6	235	7,550	13,458	176	52	231	8	278	14,203	38,035	490	115	635	22	758	40,055
2012-2013	7,405	128	32	153	16	268	7,971	14,221	174	37	231	32	329	15,024	40,677	484	99	640	81	884	42,865
2013-2014	7,813	141	35	166	20	301	8,446	15,315	218	54	244	24	394	16,249	43,955	574	150	708	48	1,012	46,447
2014-2015	8,204	128	34	139	14	339	8,825	16,266	178	50	239	17	412	17,162	46,933	503	137	699	45	1,085	49,402
Kenai Peninsula College																					
2010-2011	1,394	726	30	141		110	2,382	2,322	1,539	36	221		156	4,274	6,707	4,397	106	657		437	12,304
2011-2012	2,268	806	28	165	8	111	3,344	3,770	1,737	35	310	9	141	6,002	10,890	4,936	105	912	27	408	17,278
2012-2013	2,149	861	40	148	2	111	3,283	3,796	1,971	53	246	3	143	6,212	11,197	5,733	163	715	5	408	18,221
2013-2014	2,228	834	51	150	11	115	3,365	3,683	1,946	79	261	15	141	6,125	10,928	5,675	242	773	45	412	18,075
2014-2015	2,246	844	53	135	9	137	3,398	3,665	1,999	75	221	12	172	6,144	11,086	5,980	228	665	36	526	18,521
Kodiak College																					
2010-2011	280	31	155	25	1	16	504	501	45	265	38	2	24	875	1,258	119	717	90	4	63	2,251
2011-2012	597	46	181	40		48	908	827	58	392	65		61	1,403	2,208	174	994	168		153	3,697
2012-2013	758	57	215	38	2	40	1,109	1,077	74	452	57	4	49	1,713	2,955	219	1,109	145	5	122	4,555
2013-2014	805	58	183	69	4	61	1,169	1,223	84	367	90	4	76	1,844	3,373	209	954	248	11	215	5,010
2014-2015	889	55	177	49	3	42	1,207	1,310	80	350	77	4	47	1,868	3,555	220	885	203	10	122	4,995
Matanuska-Susitna College																					
2010-2011	352	7	5	205		14	581	440	7	5	253		16	721	1,152	16	13	676		36	1,893
2011-2012	384	11	5	170		10	576	445	12	5	225		10	697	1,319	36	13	620		32	2,020
2012-2013	506	12	9	205	2	14	745	597	14	9	266	2	14	902	1,781	37	23	715	5	40	2,601
2013-2014	670	24	10	304	1	22	1,023	856	28	16	512	1	23	1,436	2,444	84	39	1,204	3	68	3,842
2014-2015	870	20	6	359	4	27	1,281	1,135	23	6	595	5	29	1,793	3,236	63	16	1,523	13	83	4,934

e-Learning: Origin of Courses vs. Origin of Students Admitted, AY 2011 - 2015

Table 2.04

By Campus that Provides Distance Courses	Student Headcount, Seat Count and Student Credit Hours by Matriculation Campus																				
	Headcount							Enrollment (Seat Count)							SCH with AU						
	Anchorage	Kenai	Kodiak	Mat-Su	PWSC	Non UAA	TOTAL	Anchorage	Kenai	Kodiak	Mat-Su	PWSC	Non UAA	TOTAL	Anchorage	Kenai	Kodiak	Mat-Su	PWSC	Non UAA	TOTAL
Prince William Sound College																					
2010-2011	286	33	7	49	204	70	647	377	37	8	69	475	100	1,066	1,109	110	24	207	1,356	288	3,094
2011-2012	318	24	10	52	200	71	663	455	35	12	77	562	102	1,243	1,328	93	36	227	1,434	282	3,400
2012-2013	216	14	12	18	229	77	561	285	26	16	21	572	91	1,011	827	57	42	62	1,558	265	2,811
2013-2014	210	21	6	25	208	70	536	274	25	7	36	545	89	976	823	73	19	111	1,526	266	2,817
2014-2015	207	16	6	16	162	37	442	276	20	8	17	436	48	805	776	56	20	49	1,213	137	2,251
UAA Total																					
2010-2011	7,884	782	183	422	210	419	9,829	17,211	1,802	340	764	483	600	21,200	48,900	5,103	926	2,155	1,375	1,603	60,062
2011-2012	8,398	866	217	417	207	433	10,439	18,955	2,018	496	908	579	592	23,548	53,780	5,729	1,263	2,562	1,483	1,633	66,450
2012-2013	8,734	909	246	409	236	462	10,906	19,976	2,259	567	821	613	626	24,862	57,437	6,530	1,436	2,277	1,654	1,719	71,053
2013-2014	9,247	920	212	502	224	506	11,521	21,351	2,301	523	1,143	589	723	26,630	61,523	6,615	1,404	3,044	1,633	1,973	76,192
2014-2015	9,643	913	209	507	172	528	11,883	22,652	2,300	489	1,149	474	708	27,772	65,586	6,822	1,286	3,139	1,317	1,953	80,103

Source: AY2013 - AY 2015: Statewide IR DSD data system at semester closing freeze. Prior to AY 2012, data was extracted from Banner Statewide Student Information tables at semester closing freeze.

*New Banner codes were introduced in FY12. UAA began using the new codes in Summer 2011 while SW recognized the new codes beginning in Fall 2011, resulting in a variance in official counts (SW = 56,205; UAA = 66,450) for FY12.

Notes:

1. Enrollment includes auditors; Student credit hours include audit hours.
2. Courses included in this report are session codes "X"/"Y", Anchorage section codes beginning with 2, 5, or 8, or attendance methods AC, CW, EP, VC, VI, VW, WW, TC, X, Y, SI for years prior to AY12. Beginning Fall 2012, session codes 0, 1, and 2 were also included.
3. An Academic Year (AY) includes Summer, Fall and Spring semesters, starting with Summer as the first term counted.
4. Totals may not equal the sum of all categories due to rounding.

Legend of Codes:

AC - Audio Conference	VW - Video Conference and Web-based
CW - Correspondence: Web-based Instruction	WW - Web-based
EP - eLearning Agreement Primary	TC - Telecourse
EA - eLearning Agreement	X - Distance Teaching-Group
VC - Video Conference	Y - Distance Teaching-Independent
VI - Video	SI - Live Broadcast via Satellite

Awards Conferred and Graduates

Degree and Certificate Awards Conferred by Type and Campus Academic Years 2011 - 2015

Table 3.01

Degree Type	Academic Year					Total 2011-2015	% Change 2011-2015
	2010-11	2011-12	2012-13	2013-14	2014-15		
Anchorage Campus							
Licensure/Post Certificate	63	66	64	98	93	384	47.6%
Occupational Endorsement	89	116	114	136	96	551	7.9%
Certificate	66	51	45	54	59	275	-10.6%
Associate	507	500	559	587	579	2,732	14.2%
Baccalaureate	1,001	971	1,064	1,131	1,094	5,261	9.3%
Master	305	276	312	268	293	1,454	-3.9%
Doctorate			2	3	1	6	
Total	2,031	1,980	2,160	2,277	2,215	10,663	9.1%
Kenai Peninsula College							
Occupational Endorsement		2		2		4	
Certificate	6	14	9	9	12	50	100.0%
Associate	113	114	137	152	157	673	38.9%
Total	119	130	146	163	169	727	42.0%
Kodiak College							
Occupational Endorsement	1	1	1	1	6	10	500.0%
Certificate	1			1		2	-100.0%
Associate	22	29	14	22	22	109	0.0%
Total	24	30	15	24	28	121	16.7%
Matanuska-Susitna College							
Occupational Endorsement	26	18	20	23	28	115	7.7%
Certificate	5	2	2	2	4	15	-20.0%
Associate	98	116	133	125	106	578	8.2%
Total	129	136	155	150	138	708	7.0%
Prince William Sound College							
Occupational Endorsement	7	16	1		2	26	-71.4%
Certificate			1			1	
Associate	16	15	11	19	9	70	-43.8%
Total	23	31	13	19	11	97	-52.2%
UAA Total							
Licensure/Post Certificate	63	66	64	98	93	384	47.6%
Occupational Endorsement	123	153	136	162	132	706	7.3%
Certificate	78	67	57	66	75	343	-3.8%
Associate	756	774	854	905	873	4,162	15.5%
Baccalaureate	1,001	971	1,064	1,131	1,094	5,261	9.3%
Master	305	276	312	268	293	1,454	-3.9%
Doctorate			2	3	1	6	
Total	2,326	2,307	2,489	2,633	2,561	12,316	10.1%

Degree and Certificate Awards Conferred by Award Type Academic Years 2011 - 2015

Table 3.02

Degree Type	Academic Year					Total 2011-2015	% Change 2011-2015
	2010-11	2011-12	2012-13	2013-14	2014-15		
Associate of Applied Science	562	518	569	608	607	2,864	8.0%
Associate of Arts	194	256	285	297	266	1,298	37.1%
Bachelor of Arts	383	405	386	426	375	1,975	-2.1%
Bachelor of Business Admin	211	149	197	197	191	945	-9.5%
Bachelor of Fine Arts	10	6	2	6	6	30	-40.0%
Bachelor of Human Services	23	28	15	13	15	94	-34.8%
Bachelor of Liberal Studies	7	6	4	3	5	25	-28.6%
Bachelor of Music	7	10	6	13	8	44	14.3%
Bachelor of Science	350	354	435	454	472	2,065	34.9%
Bachelor of Social Work	10	13	19	19	22	83	120.0%
Certificate	78	67	57	66	75	343	-3.8%
Doctor of Philosophy			2	3	1	6	
Graduate Certificate	57	59	60	86	86	348	50.9%
Master - Other	2	5	2	3	3	15	50.0%
Master of Arts	12	9	8	10	12	51	0.0%
Master of Arts in Teaching	34	36	34	33	23	160	-32.4%
Master of Business Admin	50	34	54	35	41	214	-18.0%
Master of Civil Engineering	2	1	1	4	2	10	0.0%
Master of Education	91	83	76	64	59	373	-35.2%
Master of Fine Arts	1	10	9	6	13	39	1,200.0%
Master of Public Admin	14	12	16	6	12	60	-14.3%
Master of Public Health	11	4	10	20	12	57	9.1%
Master of Science	59	60	75	66	87	347	47.5%
Master of Social Work	29	22	27	21	29	128	0.0%
Occupational Endorsement Cert	123	153	136	162	132	706	7.3%
Post Baccalaureate Cert	6	7	4	12	7	36	16.7%
Total	2,326	2,307	2,489	2,633	2,561	12,316	10.1%

Source: DSD Degrees data table compiled by UAA IR.

High Demand Job Area Degree and Certificate Awards Conferred Academic Years 2011 - 2015

Table 3.03

High Demand Job Area Programs	Number of Awards in High Demand Job Areas				
	2010-11	2011-12	2012-13	2013-14	2014-15
Total	1,790	1,662	1,790	1,824	1,801
By Campus					
Anchorage Campus	1,602	1,500	1,613	1,612	1,604
Kenai Peninsula College	99	85	105	122	124
Kodiak College	13	17	6	11	7
Matanuska-Susitna College	71	56	57	66	62
Prince William Sound College	5	4	9	13	4
By Anchorage College					
College of Arts & Sciences	230	192	215	243	205
College of Business & Public Policy	336	247	317	304	346
College of Health	422	414	508	475	520
College of Education	217	220	206	217	186
College of Engineering	110	112	145	128	144
Community and Technical College	287	315	222	245	203
By Job Areas					
Business, Finance and Management	420	362	388	373	397
Construction	19	23	21	20	26
Engineering and Related	117	116	121	125	115
Health	596	541	688	665	665
Information Technology	94	90	81	55	57
Natural Resources	95	71	90	112	101
Other/Regional	2	10	6	8	2
Process Technology	85	80	92	118	124
Teacher Education	223	232	218	228	197
Transportation	139	137	85	120	117
All Programs	2,326	2,307	2,489	2,633	2,561
% High Demand Awards	77.0%	72.0%	71.9%	69.3%	70.3%

Source: DSD Degrees data table compiled by UAA IR.

Notes:

High Demand Job Area (HDJA) programs include nursing, allied health, behavioral health, engineering, welding, computer networking, construction management and technology, information technology, business, accounting, logistics, and many others aligned with the Alaska Department of Labor and Workforce Development (DoLWD) workforce projections. The HDJA programs list is reviewed each time DoLWD produces a new Occupational Forecast. The last update made to the list was based on the 2008-2018 Occupational Forecast, released in September 2010.

Degree and Certificate Awards Conferred UAA Academic Years 1988 - 2015

Table 3.04

Year	Conferred								Cumulative							
	Licensure	Occupat'l	Cert	Assoc	Bachelor	Master's	Doctorate	Total	Licensure	Occupat'l	Cert	Assoc	Bachelor	Master's	Doctorate	Total
1988-1995			805	4,260	4,670	1,144		10,879			805	4,260	4,670	1,144		10,879
1995-96			110	679	833	180		1,802			915	4,939	5,503	1,324		12,681
1996-97			89	629	749	235		1,702			1,004	5,568	6,252	1,559		14,383
1997-98			86	603	770	222		1,681			1,090	6,171	7,022	1,781		16,064
1998-99			91	563	708	263		1,625			1,181	6,734	7,730	2,044		17,689
1999-00			71	478	724	203		1,476			1,252	7,212	8,454	2,247		19,165
2000-01			61	515	705	178		1,459			1,313	7,727	9,159	2,425		20,624
2001-02			74	547	766	159		1,546			1,387	8,274	9,925	2,584		22,170
2002-03			88	530	770	204		1,592			1,475	8,804	10,695	2,788		23,762
2003-04			91	601	785	241		1,718			1,566	9,405	11,480	3,029		25,480
2004-05	16		107	523	778	263		1,687	16		1,673	9,928	12,258	3,292		27,167
2005-06	22		108	634	841	238		1,843	38		1,781	10,562	13,099	3,530		29,010
2006-07	44		99	676	847	356		2,022	82		1,880	11,238	13,946	3,886		31,032
2007-08	50	47	85	679	871	289		2,021	132	47	1,965	11,917	14,817	4,175		33,053
2008-09	38	49	74	684	956	270		2,071	170	96	2,039	12,601	15,773	4,445		35,124
2009-10	60	116	60	719	920	296		2,171	230	212	2,099	13,320	16,693	4,741		37,295
2010-11	63	123	78	756	1,001	305		2,326	293	335	2,177	14,076	17,694	5,046		39,621
2011-12	66	153	67	774	971	276		2,307	359	488	2,244	14,850	18,665	5,322		41,928
2012-13	64	136	57	854	1,064	312	2	2,489	423	624	2,301	15,704	19,729	5,634	2	44,417
2013-14	98	162	66	905	1,131	268	3	2,633	521	786	2,367	16,609	20,860	5,902	5	47,050
2014-15	93	132	75	873	1,094	293	1	2,561	614	918	2,442	17,482	21,954	6,195	6	49,611

Source: DSD Degrees data table, except data for 1987-1988, is collected in UAA Semester Report by UAA IR.

Faculty and Staff

Employee Headcount Trends by Governance Unit, Fall 2010 - Fall 2014

All Employees

Table 4.01

	Fall 2010			Fall 2011			Fall 2012			Fall 2013			Fall 2014		
	Faculty	Non Faculty	Total	Faculty	Non Faculty	Total	Faculty	Non Faculty	Total	Faculty	Non Faculty	Total	Faculty	Non Faculty	Total
Anchorage Campus															
College of Arts & Sciences	364	249	613	369	263	632	372	277	649	370	234	604	351	245	596
College of Business & Public Policy	70	69	139	76	69	145	82	77	159	75	74	149	83	76	159
College of Education	60	21	81	62	24	86	56	21	77	58	21	79	56	19	75
College of Engineering	52	51	103	49	64	113	57	96	153	58	60	118	56	59	115
College of Health	179	161	340	205	142	347	202	142	344	203	140	343	194	167	361
Community & Technical College	237	163	400	245	145	390	239	146	385	238	156	394	222	155	377
Consortium Library	22	67	89	24	70	94	26	70	96	27	69	96	29	63	92
Information Technology Services		74	74		70	70		63	63		63	63		57	57
Chancellor Operations		8	8		9	9		9	9		11	11		11	11
Provost Operations	8	118	126	9	118	127	13	105	118	9	119	128	12	120	132
University Advancement		34	34		35	35		42	42		34	34		36	36
VC, Administrative Operation		444	444	1	467	468	2	461	463	2	480	482	3	473	476
VC, Inst Eff, Engage/Acad Support	2	24	26	3	22	25	4	21	25	5	28	33	4	32	36
VC, Student Affairs	2	349	351	4	351	355	2	323	325	3	336	339	3	333	336
Anchorage Campus Total	996	1,832	2,828	1,047	1,849	2,896	1,055	1,853	2,908	1,048	1,825	2,873	1,013	1,846	2,859
Kenai Peninsula College	130	125	255	148	127	275	145	148	293	146	140	286	152	146	298
Kodiak College	32	34	66	35	39	74	35	39	74	38	39	77	39	41	80
Matanuska-Susitna College	99	64	163	110	67	177	116	69	185	114	79	193	109	77	186
Prince William Sound College	39	54	93	34	55	89	39	48	87	39	54	93	35	51	86
UAA Total	1,296	2,109	3,405	1,374	2,137	3,511	1,390	2,157	3,547	1,385	2,137	3,522	1,348	2,161	3,509

Employee Headcount Trends by Governance Unit, Fall 2010 - Fall 2014

Regular and Term Employees

Table 4.01a

	Fall 2010			Fall 2011			Fall 2012			Fall 2013			Fall 2014		
	Faculty	Non Faculty	Total	Faculty	Non Faculty	Total	Faculty	Non Faculty	Total	Faculty	Non Faculty	Total	Faculty	Non Faculty	Total
Anchorage Campus															
College of Arts & Sciences	220	85	305	229	89	318	232	90	322	232	90	322	216	87	303
College of Business & Public Policy	56	38	94	59	37	96	55	37	92	56	42	98	58	38	96
College of Education	34	20	54	35	21	56	28	16	44	28	17	45	28	15	43
College of Engineering	32	11	43	32	13	45	39	13	52	41	17	58	41	15	56
College of Health	120	112	232	122	103	225	129	110	239	131	106	237	127	114	241
Community & Technical College	65	72	137	65	62	127	65	60	125	72	69	141	69	65	134
Consortium Library	22	32	54	24	30	54	26	32	58	27	29	56	29	28	57
Information Technology Services		35	35		37	37		35	35		36	36		34	34
Chancellor Operations		7	7		8	8		9	9		11	11		11	11
Provost Operations	6	70	76	7	70	77	9	59	68	7	64	71	8	63	71
University Advancement		22	22		23	23		28	28		22	22		25	25
VC, Administrative Operation		256	256		265	265	1	264	265	2	279	281	3	281	284
VC, Inst. Eff., Engage/Acad Support	2	17	19	2	16	18	2	17	19	4	22	26	3	26	29
VC, Student Affairs	1	158	159	1	146	147	1	147	148	1	148	149	1	152	153
Anchorage Campus Total	558	935	1,493	576	920	1,496	587	917	1,504	601	952	1,553	583	954	1,537
Kenai Peninsula College	40	59	99	41	59	100	41	64	105	42	73	115	42	69	111
Kodiak College	11	21	32	11	23	34	15	25	40	16	23	39	14	27	41
Matanuska-Susitna College	27	38	65	29	40	69	29	43	72	30	43	73	31	44	75
Prince William Sound College	9	30	39	10	35	45	8	31	39	8	30	38	9	29	38
UAA Total	645	1,083	1,728	667	1,077	1,744	680	1,080	1,760	697	1,121	1,818	679	1,123	1,802

Employee Headcount Trends by Governance Unit, Fall 2010 - Fall 2014

Temporary Employees

Table 4.01b

	Fall 2010			Fall 2011			Fall 2012			Fall 2013			Fall 2014		
	Faculty	Non Faculty	Total	Faculty	Non Faculty	Total	Faculty	Non Faculty	Total	Faculty	Non Faculty	Total	Faculty	Non Faculty	Total
Anchorage Campus															
College of Arts & Sciences	144	164	308	140	174	314	140	187	327	138	144	282	135	158	293
College of Business & Public Policy	14	31	45	17	32	49	27	40	67	19	32	51	25	38	63
College of Education	26	1	27	27	3	30	28	5	33	30	4	34	28	4	32
College of Engineering	20	40	60	17	51	68	18	83	101	17	43	60	15	44	59
College of Health	59	49	108	83	39	122	73	32	105	72	34	106	67	53	120
Community & Technical College	172	91	263	180	83	263	174	86	260	166	87	253	153	90	243
Consortium Library		35	35		40	40		38	38		40	40		35	35
Information Technology Services		39	39		33	33		28	28		27	27		23	23
Chancellor Operations		1	1		1	1									
Provost Operations	2	48	50	2	48	50	4	46	50	2	55	57	4	57	61
University Advancement		12	12		12	12		14	14		12	12		11	11
VC, Administrative Operation		188	188	1	202	203	1	197	198		201	201		192	192
VC, Inst Eff, Engage/Acad Support		7	7	1	6	7	2	4	6	1	6	7	1	6	7
VC, Student Affairs	1	191	192	3	205	208	1	176	177	2	188	190	2	181	183
Anchorage Campus Total	438	897	1,335	471	929	1,400	468	936	1,404	447	873	1,320	430	892	1,322
Kenai Peninsula College	90	66	156	107	68	175	104	84	188	104	67	171	110	77	187
Kodiak College	21	13	34	24	16	40	20	14	34	22	16	38	25	14	39
Matanuska-Susitna College	72	26	98	81	27	108	87	26	113	84	36	120	78	33	111
Prince William Sound College	30	24	54	24	20	44	31	17	48	31	24	55	26	22	48
UAA Total	651	1,026	1,677	707	1,060	1,767	710	1,077	1,787	688	1,016	1,704	669	1,038	1,707

Source: The data in this section (Tables 4.01 - 4.07) is extracted from Banner Statewide H Tables at Fall freeze.

Note: Faculty in this report is based on Human Resources EEO classification.

Employee Characteristics by Campus, Fall 2014

Table 4.02

	Anchorage	Kenai	Kodiak	Mat-Su	PWSC	UAA Total
Total	2,859	298	80	186	86	3,509
Job Classification						
Executive	23	1	1	1		26
Faculty	1,013	152	39	109	35	1,348
Professional	521	29	8	9	12	579
Paraprofessional	371	38	27	25	14	475
Clerical	146	17	3	17	4	187
Skilled	51	4	1	2	2	60
Maintenance	75	13	1	3	12	104
Graduate Assistant	47					47
Student Assistant	612	44		20	7	683
Gender						
Female	1,658	167	55	120	49	2,049
Male	1,201	131	25	66	37	1,460
Race/Ethnicity						
AK Native & Am. Indian	91	7	2	4	2	106
AK Native & Am. Indian Multirace	121	8	2	6	3	140
African American	93	4	3	2		102
Asian	125	4	2	5	2	138
Hispanic	150	7	2	10	1	170
Hispanic Multirace	7					7
Native Hawaiian/Pacific Is	12	1			1	14
White	2,049	255	67	154	69	2,594
Multirace	59		1	1	1	62
Non Resident Alien	76				2	78
Unspecified	76	12	1	4	5	98
Workload						
Full-time	1,470	92	35	75	39	1,711
Part-time	1,389	206	45	111	47	1,798
Governance Unit						
College of Arts & Sciences	596					596
College of Business & Public Policy	159					159
College of Education	75					75
College of Engineering	115					115
College of Health	361					361
Community & Technical College	377					377
Consortium Library	92					92
Information Technology Services	57					57
Chancellor Operations	11					11
Provost Operations	132					132
University Advancement	36					36
VC, Administrative Operation	476					476
VC, Inst. Eff., Engage/Acad Support	36					36
VC, Student Affairs	336					336
Community Campuses' Total		298	80	186	86	650

Regular and Term Employee Characteristics by Campus, Fall 2014

Table 4.02a

	Anchorage	Kenai	Kodiak	Mat-Su	PWSC	UAA Total
Total	1,537	111	41	75	38	1,802
Job Classification						
Executive	23	1	1	1		26
Faculty	583	42	14	31	9	679
Professional	447	21	8	9	11	496
Paraprofessional	309	29	13	19	11	381
Clerical	84	10	3	10	1	108
Skilled	51	4	1	2	2	60
Maintenance	40	4	1	3	4	52
Gender						
Female	906	66	28	46	20	1,066
Male	631	45	13	29	18	736
Race/Ethnicity						
AK Native & Am. Indian	47	4	2	1		54
AK Native & Am. Indian Multirace	49	3	1	2	2	57
African American	44	1	2	2		49
Asian	64	2		1	2	69
Hispanic	71	3	1	4	1	80
Hispanic Multirace	3					3
Native Hawaiian/Pacific Is	4	1				5
White	1,174	91	33	62	31	1,391
Multirace	17		1			18
Non Resident Alien	19					19
Unspecified	45	6	1	3	2	57
Workload						
Full-time	1,419	92	35	75	35	1,656
Part-time	118	19	6		3	146
Governance Unit						
College of Arts & Sciences	303					303
College of Business & Public Policy	96					96
College of Education	43					43
College of Engineering	56					56
College of Health	241					241
Community & Technical College	134					134
Consortium Library	57					57
Information Technology Services	34					34
Chancellor Operations	11					11
Provost Operations	71					71
University Advancement	25					25
VC, Administrative Operation	284					284
VC, Inst. Eff., Engage/Acad Support	29					29
VC, Student Affairs	153					153
Community Campuses' Total		111	41	75	38	265

Temporary Employee Characteristics by Campus, Fall 2014

Table 4.02b

	Anchorage	Kenai	Kodiak	Mat-Su	PWSC	UAA Total
Total	1,322	187	39	111	48	1,707
Job Classification						
Faculty	430	110	25	78	26	669
Professional	74	8			1	83
Paraprofessional	62	9	14	6	3	94
Clerical	62	7		7	3	79
Maintenance	35	9			8	52
Graduate Assistant	47					47
Student Assistant	612	44		20	7	683
Gender						
Female	752	101	27	74	29	983
Male	570	86	12	37	19	724
Race/Ethnicity						
AK Native & Am. Indian	44	3		3	2	52
AK Native & Am. Indian Multirace	72	5	1	4	1	83
African American	49	3	1			53
Asian	61	2	2	4		69
Hispanic	79	4	1	6		90
Hispanic Multirace	4					4
Native Hawaiian/Pacific Is	8				1	9
White	875	164	34	92	38	1,203
Multirace	42			1	1	44
Non Resident Alien	57				2	59
Unspecified	31	6		1	3	41
Workload						
Full-time	51				4	55
Part-time	1,271	187	39	111	44	1,652
Governance Unit						
College of Arts & Sciences	293					293
College of Business & Public Policy	63					63
College of Education	32					32
College of Engineering	59					59
College of Health	120					120
Community & Technical College	243					243
Consortium Library	35					35
Information Technology Services	23					23
Provost Operations	61					61
University Advancement	11					11
VC, Administrative Operation	192					192
VC, Inst. Eff., Engage/Acad Support	7					7
VC, Student Affairs	183					183
Community Campuses' Total		187	39	111	48	385

Regular and Term Faculty Characteristics by Campus, Fall 2014

Table 4.03

	Anchorage	Kenai	Kodiak	Mat-Su	PWSC	UAA Total
Total	583	42	14	31	9	679
Faculty Classification						
ACCFT and UACAD Faculty	523	40	14	28	9	614
Non Rep Faculty 12 Month	48			2		50
Non Rep Faculty Less 12 Month	12	2		1		15
Academic Rank						
Professor	149	3			1	153
Associate Professor	138	15	6	9	2	170
Assistant Professor	217	23	8	21	4	273
Instructor	79	1		1	2	83
Tenure Status						
Tenured	258	16	6	10	3	293
Tenure Track	143	13	1	7	2	166
Non-Tenure Track	182	13	7	14	4	220
Contract Type						
Bipartite	288	40	14	31	9	382
Tripartite	287	2				289
Not Assigned	8					8
Workload Type						
Full-time	547	41	14	31	9	642
Part-time	36	1				37
Gender						
Female	295	20	11	19	5	350
Male	288	22	3	12	4	329
Race/Ethnicity						
AK Native & Am. Indian	19		1			20
AK Native & Am. Indian Multirace	13	1		1		15
African American	7	1		1		9
Asian	34	2			1	37
Hispanic	15					15
White	463	36	12	28	7	546
Multirace	2					2
Non Resident Alien	12					12
Unspecified	18	2	1	1	1	23
Highest Degree						
Doctorate	339	13	6	18	3	379
Master's	198	22	8	11	5	244
Bachelor	27	4		1		32
Associate	10	2		1		13
Unknown	9	1			1	11

Regular and Term Faculty Characteristics by Campus, Fall 2014

Table 4.03

	Anchorage	Kenai	Kodiak	Mat-Su	PWSC	UAA Total
Governance Unit						
College of Arts & Sciences	216					216
College of Business & Public Policy	58					58
College of Education	28					28
College of Engineering	41					41
College of Health	127					127
Community & Technical College	69					69
Consortium Library	29					29
Provost Operations	8					8
VC, Administrative Operation	3					3
VC, Inst. Eff., Engage/Acad Support	3					3
VC, Student Affairs	1					1
Community Campuses' Total		42	14	31	9	96

Student Credit Hours Generated by Regular and Term Faculty, Fall 2014

Table 4.04

	050-099	100-299	300-499	500-599	600-699	
	Developmental	Lower Division	Upper Division	Professional	Graduate	TOTAL
Anchorage Campus						
Academic Affairs		221.0				221.0
Arts & Sciences	1,116.0	35,977.0	10,989.0	22.0	968.0	49,072.0
Business & Public Policy		5,993.0	4,605.0	27.0	777.0	11,402.0
Education		313.0	1,036.0	120.0	1,097.0	2,566.0
Engineering		1,843.0	2,585.0	63.0	687.0	5,178.0
Health		6,129.0	4,988.5		1,467.0	12,584.5
Community & Technical	708.0	6,695.5	1,640.0	16.0	67.0	9,126.5
University Honors College		69.0	44.0			113.0
Anchorage Campus	1,824.0	57,240.5	25,887.5	248.0	5,063.0	90,263.0
Kenai Peninsula College	132.0	7,358.0	489.0			7,979.0
Kodiak College	96.0	1,759.0	45.0			1,900.0
Matanuska-Susitna College	246.0	4,447.0	112.0			4,805.0
Prince William Sound College	54.0	948.0				1,002.0
UAA Total	2,352.0	71,752.5	26,533.5	248.0	5,063.0	105,949.0

Student Credit Hours Generated by Adjunct Faculty, Fall 2014

Table 4.05

	050-099	100-299	300-499	500-599	600-699	
	Developmental	Lower Division	Upper Division	Professional	Graduate	TOTAL
Anchorage Campus						
Academic Affairs		654.0		25.0		679.0
Arts & Sciences	1,447.0	14,783.0	903.0	72.0	161.0	17,366.0
Business & Public Policy		1,212.0	360.0	28.0	237.0	1,837.0
Education		498.0	482.0	1,608.0	437.0	3,025.0
Engineering		776.0	499.0		96.0	1,371.0
Health		2,128.0	716.0		276.0	3,120.0
Community & Technical	942.0	10,917.0	739.0	16.0	16.0	12,630.0
University Honors College		138.0	40.0			178.0
Anchorage Campus	2,389.0	31,106.0	3,739.0	1,749.0	1,223.0	40,206.0
Kenai Peninsula College	684.0	6,794.0	118.0	159.0		7,755.0
Kodiak College	123.0	1,349.0	38.0	5.0		1,515.0
Matanuska-Susitna College	675.0	7,061.0	102.0			7,838.0
Prince William Sound College	16.5	1,679.5		5.0		1,701.0
UAA Total	3,887.5	47,989.5	3,997.0	1,918.0	1,223.0	59,015.0

Source: The data regarding student information is extracted from Banner Statewide DSD data system at Fall semester closing freeze and the data for faculty information is from Banner Statewide H Tables at Fall freeze.

Note: Student Credit Hours are based on course level, representing credit courses at the 050 level and above, and do not include auditors.

Number of Course Sections Taught by Regular and Term Faculty, Fall 2014

Table 4.06

	050-099	100-299	300-499	500-599	600-699	
	Developmental	Lower Division	Upper Division	Professional	Graduate	TOTAL
Anchorage Campus						
Academic Affairs		4.0				4.0
Arts & Sciences	11.0	421.0	276.0	4.0	88.0	800.0
Business & Public Policy		59.0	64.0	1.0	19.0	143.0
Education		7.0	23.0	3.0	40.0	73.0
Engineering		30.0	60.0	1.0	51.0	142.0
Health		189.0	110.0		52.0	351.0
Community & Technical	13.0	199.0	42.0	2.0	4.0	260.0
University Honors College		2.0	2.0			4.0
Anchorage Campus	24.0	911.0	577.0	11.0	254.0	1,777.0
Kenai Peninsula College	5.0	165.0	20.0			190.0
Kodiak College	2.0	59.0	1.0			62.0
Matanuska-Susitna College	7.0	124.0	7.0			138.0
Prince William Sound College	4.0	52.0	.			56.0
UAA Total	42.0	1,311.0	605.0	11.0	254.0	2,223.0

Number of Course Sections Taught by Adjunct Faculty, Fall 2014

Table 4.07

	050-099	100-299	300-499	500-599	600-699	
	Developmental	Lower Division	Upper Division	Professional	Graduate	TOTAL
Anchorage Campus						
Academic Affairs		11.0		2.0		13.0
Arts & Sciences	15.0	259.0	32.0	1.0	18.0	325.0
Business & Public Policy		14.0	5.0	1.0	6.0	26.0
Education		9.0	8.0	93.0	18.0	128.0
Engineering		18.0	12.0		6.0	36.0
Health		59.0	17.0		9.0	85.0
Community and Technical	20.0	290.0	19.0	5.0	4.0	338.0
University Honors College		4.0	3.0			7.0
Anchorage Campus	35.0	664.0	96.0	102.0	61.0	958.0
Kodiak College	4.0	37.0	1.0	1.0		43.0
Kenai Peninsula College	12.0	162.0	8.0	5.0		187.0
Matanuska-Susitna College	9.0	178.0	2.0			189.0
Prince William Sound College	5.0	68.0		1.0		74.0
UAA Total	65.0	1,109.0	107.0	109.0	61.0	1,451.0

Source: The data regarding student information is extracted from Banner Statewide DSD data system at Fall semester closing freeze and the data for faculty information is from Banner Statewide H Tables at Fall freeze.

Note: Number of Course Sections includes credit course sections only, which are courses at the 050 level and above.

Finance, Grants & Giving

Authorized State Appropriation Budget by Campus Fiscal Years 2011 - 2015

Table 5.01

	FY2011	FY2012	FY2013	FY2014	FY2015	% Change	
	(in Thousands of \$)					FY11-FY15	FY14-FY15
Anchorage Campus	107,504	110,723	113,934	117,480	115,694	7.6%	-1.5%
Kenai Peninsula College	6,776	6,969	7,533	8,055	7,749	14.4%	-3.8%
Kodiak College	2,803	2,891	2,927	3,087	2,848	1.6%	-7.7%
Matanuska-Susitna College	4,557	4,809	4,944	5,140	5,444	19.5%	5.9%
Prince William Sound College	3,343	3,520	3,634	3,636	3,514	5.1%	-3.3%
UAA Total	\$124,983	\$128,913	\$132,972	\$137,397	\$135,249	8.2%	-1.6%

Total Authorized Budget by Campus Fiscal Years 2011 - 2015

Table 5.02

	FY2011	FY2012	FY2013	FY2014	FY2015	% Change	
	(in Thousands of \$)					FY11-FY15	FY14-FY15
Anchorage Campus	249,794	261,194	272,554	276,947	277,979	11.3%	0.4%
Kenai Peninsula College	11,951	12,259	14,058	16,564	16,957	41.9%	2.4%
Kodiak College	4,354	4,472	4,554	5,030	5,903	35.6%	17.4%
Matanuska-Susitna College	9,161	9,504	10,559	10,905	11,443	24.9%	4.9%
Prince William Sound College	7,021	7,270	7,470	7,553	7,819	11.4%	3.5%
UAA Total	\$282,281	\$294,699	\$309,195	\$316,999	\$320,102	13.4%	1.0%

Source: UA Approved Operating and Capital Budgets (Yellowbooks). Compiled by UA Statewide Budget.

Notes:

The authorized budget is the amount of funds approved for receipt and expenditure by the Alaska State Legislature, net of any vetoes by the Governor. Supplemental appropriations and revised programs approved subsequent to the legislative session are generally not included. Academic Organization (AO) totals and UAA totals may not add up due to rounding to the thousands of dollars at each reporting level.

Actual State Appropriation Expenditures by Campus Fiscal Years 2010 - 2014

Table 5.03

	FY2010	FY2011	FY2012	FY2013	FY2014	% Change	
	(in Thousands of \$)					FY10-FY14	FY13-FY14
Anchorage Campus	103,874	107,968	110,958	114,078	117,552	13.2%	3.0%
Kenai Peninsula College	6,775	6,990	7,142	7,598	8,123	19.9%	6.9%
Kodiak College	2,831	2,843	2,958	3,046	3,117	10.1%	2.3%
Matanuska-Susitna College	4,502	4,746	4,949	4,835	5,204	15.6%	7.6%
Prince William Sound College	3,237	3,400	3,676	3,650	3,715	14.8%	1.8%
UAA Total	\$121,219	\$125,948	\$129,683	\$133,208	\$137,711	13.6%	3.4%

Total Actual Expenditures by Campus Fiscal Years 2010 - 2014

Table 5.04

	FY2010	FY2011	FY2012	FY2013	FY2014	% Change	
	(in Thousands of \$)					FY10-FY14	FY13-FY14
Anchorage Campus	235,565	252,815	258,227	267,651	264,862	12.4%	-1.0%
Kenai Peninsula College	12,606	13,714	14,740	15,612	15,441	22.5%	-1.1%
Kodiak College	3,633	4,060	4,917	5,159	5,295	45.8%	2.7%
Matanuska-Susitna College	8,630	9,485	10,064	10,002	10,184	18.0%	1.8%
Prince William Sound College	6,117	6,560	6,468	5,874	6,378	4.3%	8.6%
UAA Total	\$266,551	\$286,634	\$294,416	\$304,297	\$302,160	13.4%	-0.7%

Notes:

Table 5.03 provides the actual State appropriation expenditures by Academic Organization (AO) as reported to the State of Alaska Office of Management and Budget. Actual expenditures may exceed initial legislative authorizations due to supplemental appropriations or revised programs approved subsequent to the regular legislative session. State Appropriations include General Funds (GF), GF/Match, GF Mental Health, Workforce Development funds, Alaska Commission on Postsecondary Education funds, Alaska Science and Technology Foundation and BLic funds. Mental Health Trust Authority Authorized Receipts have been removed from State Appropriations and are now reported under Receipt Authority. AO totals and UAA totals may not add up due to rounding to the thousands of dollars at each reporting level.

UAA Summary of Revenue Received Fiscal Years 2011 - 2015

Table 5.05

Revenue	FY11	% Total	FY12	% Total	FY13	% Total	FY14	% Total	FY15	% Total	% Change	
											FY11-FY15	FY14-Y15
Unrestricted												
General Funds	127,032.3	44.2%	130,941.9	44.2%	134,561.6	44.0%	139,387.0	45.9%	137,962.2	44.7%	8.6%	-1.0%
Net Tuition / Fees	65,741.8	22.9%	70,590.0	23.9%	72,372.2	23.7%	72,414.6	23.8%	72,728.0	23.6%	10.6%	0.4%
UA IAR	8,583.1	3.0%	9,248.7	3.1%	11,369.9	3.7%	10,092.8	3.3%	9,219.5	3.0%	7.4%	-8.7%
UA Receipts	9,991.0	3.5%	7,182.6	2.4%	8,269.3	2.7%	8,496.3	2.8%	8,616.2	2.8%	-13.8%	1.4%
Indirect Cost Recov	3,403.3	1.2%	3,461.2	1.2%	3,455.0	1.1%	3,203.0	1.1%	3,408.9	1.1%	0.2%	6.4%
Interest Income	(1.1)	0.0%	(1.2)	0.0%	(0.9)	0.0%	0.0	0.0%	0.0	0.0%	-100.0%	
CIP Receipts	2,301.1	0.8%	2,200.7	0.7%	2,181.1	0.7%	1,878.2	0.6%	832.1	0.3%	-63.8%	-55.7%
Unrestricted Total	217,051.5	75.4%	223,623.9	75.6%	232,208.2	75.9%	235,471.9	77.5%	232,766.9	75.4%	7.2%	-1.1%
Restricted												
Federal Receipts	32,062.3	11.1%	31,771.5	10.7%	32,195.1	10.5%	29,434.7	9.7%	29,506.5	9.6%	-8.0%	0.2%
UA IAR	(1.1)	0.0%	8.3	0.0%	0.0	0.0%	0.0	0.0%	0.0	0.0%	-100.0%	
State IAR	6,794.2	2.4%	6,751.0	2.3%	6,411.9	2.1%	6,222.5	2.0%	8,451.3	2.7%	24.4%	35.8%
Interest Income		0.0%	0.5	0.0%	0.6	0.0%	0.6	0.0%	0.5	0.0%		-16.7%
CIP Receipts			164.0	0.1%	1.9	0.0%	0.0	0.0%	0.0	0.0%		
UA Receipts	6,738.4	2.3%	8,446.4	2.9%	9,396.2	3.1%	9,027.2	3.0%	9,459.7	3.1%	40.4%	4.8%
Restricted Total	45,593.8	15.8%	47,141.7	15.9%	48,005.7	15.7%	44,685.0	14.7%	47,418.0	15.4%	4.0%	6.1%
Auxiliary												
Dorm, Food	22,902.7	8.0%	23,066.5	7.8%	22,864.7	7.5%	21,503.8	7.1%	25,129.1	8.1%	9.7%	16.9%
Interest Income	2.8	0.0%	24.0	0.0%	28.7	0.0%	26.9	0.0%	22.3	0.0%	696.4%	-17.1%
UA Receipts	28.7	0.0%	27.9	0.0%	728.5	0.2%	29.6	0.0%	876.1	0.3%	2,952.6%	2,859.8%
Intra-Agency Receipts		0.0%	15.5	0.0%	9.9	0.0%	16.7	0.0%	604.4	0.2%		3,519.2%
Auxiliary Total	22,934.2	8.0%	23,133.9	7.8%	23,631.8	7.7%	21,577.0	7.1%	26,631.9	8.6%	16.1%	23.4%
Designated Total	2,098.2	0.7%	2,070.8	0.7%	2,073.5	0.7%	1,986.9	0.7%	2,002.0	0.6%	-4.6%	0.8%
UAA TOTAL	287,677.7	100.0%	295,970.3	100.0%	305,919.2	100.0%	303,720.8	100.0%	308,818.8	100.0%	7.3%	1.7%

Source: University of Alaska 'S' reports for UAA appropriation.

Notes:

1. Auxiliary enterprises include Alaska Airlines Center (responsible for increase from FY14-15), Anchorage Campus Bookstore, Housing, Dining Services, Health Center, Parking, Kenai Bookstore, Kodiak Bookstore, Matanuska-Susitna Bookstore, and Prince William Sound College Bookstore and Housing.
2. Unrestricted UA Receipts includes negative offset for FY12 Unreserved Fund Balance \$9,567.7.
3. Dollar amounts in thousands.

UAA Summary of Expenditures by NCHEMS

Fiscal Years 2011 - 2015

Table 5.06

NCHEMS	FY11	% Total	FY12	% Total	FY13	% Total	FY14	% Total	FY15	% Total	% Change	
											FY11-FY15	FY14-Y15
Unrestricted												
Instruction	98,386.1	34.3%	102,094.0	34.7%	105,397.9	34.6%	105,881.2	35.0%	103,735.5	33.8%	5.4%	-2.0%
Research	5,068.6	1.8%	5,795.9	2.0%	5,916.6	1.9%	4,795.3	1.6%	4,473.4	1.5%	-11.7%	-6.7%
Public Service	4,367.9	1.5%	4,671.5	1.6%	5,037.1	1.7%	6,026.7	2.0%	5,928.2	1.9%	35.7%	-1.6%
Academic Support	18,043.0	6.3%	19,643.2	6.7%	20,015.7	6.6%	19,798.9	6.6%	18,754.4	6.1%	3.9%	-5.3%
Library	6,915.2	2.4%	6,996.7	2.4%	7,514.3	2.5%	7,762.5	2.6%	7,184.7	2.3%	3.9%	-7.4%
Student Services	18,403.5	6.4%	19,287.6	6.6%	20,084.1	6.6%	19,533.7	6.5%	19,124.5	6.2%	3.9%	-2.1%
Athletics	7,531.2	2.6%	7,777.2	2.6%	7,624.1	2.5%	8,891.4	2.9%	7,249.1	2.4%	-3.7%	-18.5%
Institutional Support	25,838.1	9.0%	28,565.0	9.7%	31,318.2	10.3%	32,433.8	10.7%	29,779.3	9.7%	15.3%	-8.2%
Physical Plant	35,648.7	12.4%	30,899.6	10.5%	30,637.2	10.1%	30,506.8	10.1%	35,029.9	11.4%	-1.7%	14.8%
Scholarships	(3,507.5)	-1.2%	(2,929.1)	-1.0%	(3,128.9)	-1.0%	(3,114.2)	-1.0%	(3,165.6)	-1.0%	-9.7%	1.7%
Debt Service	553.9	0.2%	0.0	0.0%	0.0	0.0%	0.1	0.0%	0.0	0.0%	-100.0%	-100.0%
Unrestricted Total	217,248.7	75.8%	222,801.6	75.7%	230,416.3	75.7%	232,516.2	77.0%	228,093.4	74.4%	5.0%	-1.9%
Restricted												
Instruction	7,862.5	2.7%	7,069.8	2.4%	7,798.6	2.6%	7,772.2	2.6%	6,376.3	2.1%	-18.9%	-18.0%
Research	8,531.4	3.0%	9,934.8	3.4%	10,308.6	3.4%	8,919.4	3.0%	9,757.9	3.2%	14.4%	9.4%
Public Service	8,550.2	3.0%	8,204.1	2.8%	8,029.7	2.6%	7,634.4	2.5%	10,998.8	3.6%	28.6%	44.1%
Academic Support	838.0	0.3%	1,230.9	0.4%	1,183.4	0.4%	1,202.5	0.4%	1,165.2	0.4%	39.0%	-3.1%
Library	76.3	0.0%	49.6	0.0%	37.7	0.0%	50.6	0.0%	44.6	0.0%	-41.5%	-11.9%
Student Services	2,725.5	1.0%	1,960.8	0.7%	2,389.5	0.8%	1,388.8	0.5%	1,107.3	0.4%	-59.4%	-20.3%
Athletics	57.1	0.0%	10.8	0.0%	15.9	0.0%	4.8	0.0%	32.7	0.0%	-42.7%	581.3%
Institutional Support	38.3	0.0%	64.8	0.0%	120.4	0.0%	79.0	0.0%	131.7	0.0%	243.9%	66.7%
Physical Plant	210.3	0.1%	354.4	0.1%	5.0	0.0%	(155.5)	-0.1%	372.3	0.1%	77.0%	-339.4%
Scholarships	17,142.5	6.0%	18,229.9	6.2%	18,200.0	6.0%	17,761.5	5.9%	17,682.6	5.8%	3.2%	-0.4%
Auxiliary	0.0	0.0%	0.0	0.0%	0.0	0.0%	0.0	0.0%	(94.0)	0.0%		
Restricted Total	46,032.1	16.1%	47,109.9	16.0%	48,088.8	15.8%	44,657.7	14.8%	47,575.4	15.5%	3.4%	6.5%
Auxiliary Total	21,254.7	7.4%	22,422.9	7.6%	23,906.8	7.9%	22,999.1	7.6%	28,844.9	9.4%	35.7%	25.4%
Designated Total	2,098.3	0.7%	2,070.8	0.7%	2,073.5	0.7%	1,986.9	0.7%	2,002.0	0.7%	-4.6%	0.8%
UAA TOTAL	286,633.8	100.0%	294,405.2	100.0%	304,485.4	100.0%	302,159.9	100.0%	306,515.7	100.0%	6.9%	1.4%

NCHEMS = National Center for Higher Education Management Statistics

Source: University of Alaska 'S' reports.

Note: Dollar amounts in thousands.

UAA Authorized Expenditure Budget (Unrestricted) Instruction Component Only, Fiscal Years 2011 - 2015

Table 5.07

	FY2011	FY2012	FY2013	FY2014	FY2015	% Change	
	(in Thousands of \$)					FY11-FY15	FY14-FY15
Anchorage Campus							
College of Arts & Sciences	30,278.2	29,237.4	29,327.1	30,254.5	29,620.8	-2.2%	-2.1%
College of Bus & Public Policy	8,826.5	8,865.3	9,354.6	10,201.1	10,082.9	14.2%	-1.2%
College of Education	4,196.6	4,482.5	4,094.0	4,338.6	4,298.6	2.4%	-0.9%
College of Engineering	5,529.1	6,082.0	7,144.0	7,695.2	7,358.7	33.1%	-4.4%
College of Health	15,807.3	16,876.0	18,770.0	19,078.8	18,751.1	18.6%	-1.7%
Community & Technical College	16,610.8	17,449.5	16,457.7	16,193.2	16,451.7	-1.0%	1.6%
Provost Operations	713.7	736.8	1,230.1	1,774.1	1,870.9	162.1%	5.5%
Anchorage Campus Total	81,962.2	83,729.5	86,377.5	89,535.5	88,434.7	7.9%	-1.2%
Kenai Peninsula College	7,473.0	7,375.0	7,455.5	8,692.5	7,773.4	4.0%	-10.6%
Kodiak College	1,393.8	1,762.9	1,888.3	2,225.3	2,572.6	84.6%	15.6%
Matanuska-Susitna College	3,844.4	4,286.4	4,190.2	4,891.8	4,610.1	19.9%	-5.8%
Prince William Sound College	1,981.3	2,241.9	1,957.0	1,435.8	1,736.5	-12.4%	20.9%
UAA Total	96,654.7	99,395.7	101,868.5	106,780.9	105,127.3	8.8%	-1.5%

Source: UAA Budget Office

Note:

Includes Academic Units only and does not include central administration or information technology services units.

UAA Tuition Rate History Fiscal Years 2012 - 2016

Table 5.08

	FY2012	FY2013	FY2014 (in \$/credit)	FY2015	FY2016	% Change FY12-FY16 FY15-FY16	
Anchorage Campus*							
Resident							
Undergraduate							
Lower Division	154	165	168	174	183	18.8%	5.2%
Upper Division	187	200	204	210	221	18.2%	5.2%
Graduate	372	383	391	403	423	13.7%	5.0%
Non-Resident							
Undergraduate							
Lower Division	542	580	600	618	649	19.7%	5.0%
Upper Division	575	615	636	654	687	19.5%	5.0%
Surcharge	388	415	432	444	466	20.1%	5.0%
Graduate	760	783	799	823	864	13.7%	5.0%
Surcharge	388	400	408	420	441	13.7%	5.0%
Kodiak College							
Resident							
Undergraduate							
Lower Division	135	144	147	152	161	19.3%	5.9%
Prince William Sound College							
Resident							
Undergraduate							
Lower Division	133	142	145	153	160	20.3%	4.6%

Source: Institutional Web Sites

* Anchorage Campus, Kenai Peninsula College and Matanuska-Susitna College share the same tuition rates.

Research Grant Awards by University Units and Fund Agencies Fiscal Year 2015

Table 5.09

		Academic Support		Institutional Support		Instruction		Public Service		Research		Scholarship/ Fellowship		Student Services		TOTAL	
		N	\$	N	\$	N	\$	N	\$	N	\$	N	\$	N	\$	N	\$
College of Arts & Sciences																	
Federal Agencies						4	381,728	3	355,000	20	1,670,257					27	2,406,985
Local Government						1	83,041									1	83,041
Private Funding Souces		5	114,691			8	174,675	9	176,403	20	777,179	1	5,100			43	1,248,048
Alaska State Agencies								2	199,545	9	743,801					11	943,346
Total		5	114,691			13	639,444	14	730,948	49	3,191,237	1	5,100			82	4,681,420
College of Business & Public Policy																	
Federal Agencies										2	128,422					2	128,422
Local Government										3	65,000					3	65,000
Private Funding Sources		3	439,290			4	673,560	1	998	16	600,058	1	1,000			25	1,714,906
Alaska State Agencies										9	548,169					9	548,169
Total		3	439,290			4	673,560	1	998	30	1,341,649	1	1,000			39	2,456,497
College of Education																	
Federal Agencies						1	363,120									1	363,120
Private Funding Sources						2	45,211	1	2,040							3	47,251
Alaska State Agencies						1	67,644									1	67,644
Total						4	475,975	1	2,040							5	478,015
College of Engineering																	
Federal Agencies										1	103,441					1	103,441
Private Funding Sources		2	5,205			2	1,784,864	3	175,349	8	991,670			2	12,791	17	2,969,879
Alaska State Agencies						1	20,000			7	676,863					8	696,863
Total		2	5,205			3	1,804,864	3	175,349	16	1,771,974			2	12,791	26	3,770,183
College of Health																	
Federal Agencies						4	1,198,314	3	825,559	2	165,415	1	348,963			10	2,538,251
Local Government								1	7,010							1	7,010
Private Funding Sources		2	82,170	3	45,625	3	453,047	9	478,751	7	220,729	2	12,772	1	3,798	27	1,296,892
Alaska State Agencies						3	66,939	25	3,197,504	8	1,208,307	1	458,502			37	4,931,252
Other State Agencies										1	400,000					1	400,000
Total		2	82,170	3	45,625	10	1,718,300	38	4,508,824	18	1,994,451	4	820,237	1	3,798	76	9,173,405

Research Grant Awards by University Units and Fund Agencies Fiscal Year 2015

Table 5.09

	Academic Support		Institutional Support		Instruction		Public Service		Research		Scholarship/ Fellowship		Student Services		TOTAL	
	N	\$	N	\$	N	\$	N	\$	N	\$	N	\$	N	\$	N	\$
Community & Technical College																
Private Funding Sources	1	4,984	1	30,200	4	68,300	1	67,000							7	170,484
Alaska State Agencies					5	287,391	1	6,842							6	294,233
Total	1	4,984	1	30,200	9	355,691	2	73,842							13	464,717
Consortium Library																
Federal Agencies							2	1,023,000							2	1,023,000
Private Funding Sources			3	101,034			4	148,583							7	249,617
Alaska State Agencies							3	398,558							3	398,558
Total			3	101,034			9	1,570,141							12	1,671,175
Athletics/Sport Center																
Private Funding Sources	1	38,380					1	4,800							2	43,180
Provost Operations																
Federal Agencies					3	647,706	6	1,371,720	7	3,809,887	2	100,000			18	5,929,314
Local Government					1	16,500	5	205,900							6	222,400
Private Funding Sources	2	42,372			4	1,248,890	10	501,818	2	9,507	5	154,612	1	9,874	24	1,967,072
Alaska State Agencies	1	20,000			1	40,000	4	3,052,800			1	960,000			7	4,072,800
Total	3	62,372			9	1,953,097	25	5,132,238	9	3,819,394	8	1,214,612	1	9,874	55	12,191,586
Senior Vice Provost Operations																
Private Funding Sources	1	6,650							1	7,500					2	14,150
University Advancement																
Private Funding Sources			1	57,000											1	57,000
Student Affairs																
Federal Agencies													3	933,186	3	933,186
Private Funding Sources							1	22,000					1	4,950	2	26,950
Total							1	22,000					4	938,136	5	960,136

Research Grant Awards by University Units and Fund Agencies Fiscal Year 2015

Table 5.09

	Academic Support		Institutional Support		Instruction		Public Service		Research		Scholarship/Fellowship		Student Services		TOTAL	
	N	\$	N	\$	N	\$	N	\$	N	\$	N	\$	N	\$	N	\$
Kenai Peninsula College																
Federal Agencies					1	18,870			1	60,992					2	79,862
Local Government					1	697,159									1	697,159
Private Funding Sources	1	11,000			3	25,526	2	25,985							6	62,511
Alaska State Agencies					2	263,854	1	4,750							3	268,604
Total	1	11,000			7	1,005,409	3	30,735	1	60,992					12	1,108,136
Kodiak College																
Federal Agencies	1	399,593													1	399,593
Private Funding Sources			1	12,140	1	3,448									2	15,588
Alaska State Agencies	1	12,000													1	12,000
Other State Agencies			1	9,000	1	110,123									2	119,123
Total	2	411,593	2	21,140	2	113,571									6	546,304
Matanuska-Susitna College																
Local Government					2	105,000									2	105,000
Private Funding Sources			1	5,000	1	15,063							1	14,960	3	35,023
Alaska State Agencies					2	103,289									2	103,289
Total			1	5,000	5	223,352							1	14,960	7	243,312
Prince William Sound College																
Private Funding Sources							3	16,236							3	16,236
Alaska State Agencies					1	85,626									1	85,626
Total					1	85,626	3	16,236							4	101,862
UAA Total																
Federal Agencies	1	399,593			13	2,609,739	14	3,575,279	33	5,938,414	3	448,963	3	933,186	67	13,905,174
Local Government					5	901,700	6	212,910	3	65,000					14	1,179,610
Private Funding Sources	18	744,742	10	250,998	32	4,492,584	45	1,619,963	54	2,606,643	9	173,484	6	46,372	174	9,934,785
Alaska State Agencies	1	20,000	1	9,000	17	1,044,867			33	3,177,139	2	1,418,502			90	12,529,507
Other State Agencies	1	12,000					36	6,859,999	1	400,000					2	412,000
Total	21	1,176,335	11	259,998	67	9,048,889	101	12,268,151	124	12,187,197	14	2,040,949	9	979,558	347	37,961,076

Source: UAA Research and Graduate Studies Office, compiled by UAA/IR.

Notes: Awards under Provost Operations include awards of Alaska Native Science and Engineering Program and Health Programs Departments which report directly to Provost.

1. N = number of proposals awarded
2. \$ = amount awarded

Research Grant Awards by University Units and Research Types

Fiscal Years 2011 - 2015

Table 5.10

		FY2011		FY2012		FY2013		FY2014		FY2015	
		N	\$	N	\$	N	\$	N	\$	N	\$
College of Arts & Sciences											
Academic Support	4	254,878	3	26,691	4	122,858	4	140,700	5	114,691	
Instruction	11	1,144,498	13	891,007	9	741,173	6	597,212	13	639,444	
Public Service	10	153,278	9	461,670	9	754,889	11	935,295	14	730,948	
Research	50	6,314,505	58	8,853,491	54	6,276,000	56	5,799,679	49	3,191,237	
Scholarship/Fellwshp			1	1,440	2	24,940	1	11,100	1	5,100	
Student Services					1	25,000					
Total	75	7,867,159	84	10,234,299	79	7,944,861	78	7,483,986	82	4,681,420	
College of Business & Public Policy											
Academic Support			2	205,124	2	241,578	3	293,260	3	439,290	
Institutional Support	1	19,196									
Instruction	1	198,000	3	219,831	4	386,240	4	109,610	4	673,560	
Public Service	23	3,448,000	21	1,542,534	18	2,500,391	1	3,500	1	998	
Research	37	1,564,869	42	2,338,400	31	2,149,253	33	2,279,628	30	1,341,649	
Scholarship/Fellwshp									1	1,000	
Total	62	5,230,065	68	4,305,890	55	5,277,462	41	2,685,998	39	2,456,497	
College of Education											
Academic Support	1	10,000	2	108,500							
Instruction	4	74,300	4	386,069	3	92,719	4	434,761	4	475,975	
Public Service			1	12,000	1	12,000			1	2,040	
Research	1	50,000									
Scholarship/Fellwshp	2	134,000	2	117,000	1	138,000	1	110,000			
Total	8	268,300	9	623,569	5	242,719	5	544,761	5	478,015	
College of Engineering											
Academic Support	1	95,840	1	111,450	1	123,387	2	26,895	2	5,205	
Instruction	1	219,185	2	7,535	2	1,136,495	3	694,140	3	1,804,864	
Public Service	1	16,087					2	94,050	3	175,349	
Research	7	475,149	9	770,663	15	923,785	16	806,512	16	1,771,974	
Student Services					2	12,572			2	12,791	
Total	10	806,261	12	889,648	20	2,196,239	23	1,621,597	26	3,770,183	
College of Health											
Academic Support	2	50,292	1	99,000	3	28,430	3	84,990	2	82,170	
Institutional Support	1	693	4	98,310	5	78,515	3	59,852	3	45,625	
Instruction	9	2,690,020	10	2,726,914	7	1,819,912	11	2,712,309	10	1,718,300	
Public Service	29	4,409,877	25	4,311,085	21	4,022,578	27	4,044,714	38	4,508,824	
Research	21	1,803,298	25	2,888,243	21	1,593,508	27	2,124,284	18	1,994,451	
Scholarship/Fellwshp	2	624,278	1	17,471	2	257,813	2	337,745	4	820,237	
Student Services	1	2,696	1	386,417			1	7,628	1	3,798	
Total	65	9,581,155	67	10,527,440	59	7,800,756	74	9,371,521	76	9,173,405	
Community & Technical College											
Academic Support			2	23,846			2	12,997	1	4,984	
Institutional Support									1	30,200	
Instruction	15	726,648	9	2,988,423	5	1,314,745	5	618,449	9	355,691	
Public Service	2	122,000	2	107,315	2	106,842	2	26,841	2	73,842	
Research	2	18,000									
Scholarship/Fellwshp	2	385,508									
Total	21	1,252,156	13	3,119,584	7	1,421,587	9	658,287	13	464,717	

Research Grant Awards by University Units and Research Types

Fiscal Years 2011 - 2015

Table 5.10

	FY2011		FY2012		FY2013		FY2014		FY2015	
	N	\$	N	\$	N	\$	N	\$	N	\$
Consortium Library										
Academic Support	4	1,451,215	2	23,145	2	41,394			3	101,034
Institutional Support	2	100,919	3	103,374	2	113,660	3	353,040	9	1,570,141
Public Service	3	331,662	7	1,209,094	6	472,656	11	1,840,906	12	1,671,175
Total	9	1,883,795	12	1,335,613	10	627,710	14	2,193,947		
Athletics/Sport Center										
Academic Support							1	4,000	1	38,380
Public Service									1	4,800
Student Services	1	21,505								
Total	1	21,505					1	4,000	2	43,180
Chancellor Operations										
Academic Support							1	1,250		
Provost Operations										
Academic Support	6	867,375	5	279,301	2	120,426	3	59,473	3	62,372
Institutional Support							2	126,510		
Instruction	11	1,395,497	12	2,321,102	9	2,140,025	10	1,626,454	9	1,953,097
Public Service	2	3,413	5	169,600	3	134,336	23	2,339,364	25	5,132,238
Research	1	121,499	4	50,301	4	29,500	2	50,141	9	3,819,394
Scholarship/Fellwshp	12	1,225,719	6	440,400	6	1,117,989	6	1,187,329	8	1,214,612
Student Services	2	39,799	3	312,813	3	224,070	1	21,346	1	9,874
Total	34	3,653,302	35	3,573,517	27	3,766,346	47	5,410,618	55	12,191,586
Senior Vice Provost Operations										
Academic Support							1	5,140	1	6,650
Public Service					2	2,000	3	24,218		
Research	1	2,500	1	4,936	1	2,500	1	5,000		
Student Services					1	6000			1	7500
Total	1	2,500	1	4,936	4	10,500	5	34,358	2	14,150
University Advancement										
Institutional Support					3	95,000	2	39,800	1	57,000
Vice Chancellor, Student Affairs										
Academic Support							1	3,000		
Public Service									1	22,000
Student Services	6	1,641,181	4	1,175,436	5	793,465	4	836,758	4	938,136
Total	6	1,641,181	4	1,175,436	5	793,465	5	839,758	5	960,136
Vice Chancellor, Admin Operations										
Institutional Support							1	990,000		
Public Service					1	4,992				
Total					1	4,992	1	990,000		

Research Grant Awards by University Units and Research Types

Fiscal Years 2011 - 2015

Table 5.10

		FY2011		FY2012		FY2013		FY2014		FY2015	
		N	\$	N	\$	N	\$	N	\$	N	\$
Kenai Peninsula College											
Academic Support				1	6,000					1	11,000
Institutional Support	1	20,000		1	20,000			1	20,000		
Instruction	8	1,486,596		7	1,616,214	6	1,385,928	6	1,051,690	7	1,005,409
Public Service	4	39,600		4	28,725	3	31,117	3	26,474	3	30,735
Research				1	165,000	2	278,641			1	60,992
Total	13	1,546,196		14	1,835,939	11	1,695,686	10	1,098,164	12	1,108,136
Kodiak College											
Academic Support	1	399,852		2	799,721	2	810,276	2	1,214,588	2	411,593
Institutional Support										2	21,140
Instruction	1	103,534		1	103,452	2	164,381	2	575,948	2	113,571
Public Service				1	1,800						
Total	2	503,386		4	904,973	4	974,657	4	1,790,536	6	546,304
Matanuska-Susitna College											
Institutional Support	1	100,000								1	5,000
Instruction				1	100,000	2	115,150	1	703	5	223,352
Student Services										1	14,960
Total	1	100,000		1	100,000	2	115,150	1	703	7	243,312
Prince William Sound College											
Institutional Support				2	23,242	1	1,000				
Instruction	6	1,092,934		2	159,082	2	169,391	2	105,126	1	85,626
Public Service	1	6,500		1	6,000			2	12,637	3	16,236
Total	7	1,099,434		5	188,324	3	170,391	4	117,763	4	101,862
UAA Total											
Academic Support	19	3,129,452		21	1,682,778	16	1,488,349	23	1,846,293	21	1,176,335
Institutional Support	5	140,808		10	244,926	11	288,175	12	1,589,202	11	259,998
Instruction	68	9,231,212		64	11,519,630	51	9,466,159	54	8,526,403	67	9,048,889
Public Service	75	8,530,417		76	7,849,823	66	8,041,801	85	9,347,999	101	12,268,151
Research	120	10,349,820		140	15,071,034	128	11,253,187	135	11,065,244	124	12,187,197
Scholarship/Fellowshp	18	2,369,505		10	576,311	11	1,538,742	10	1,646,174	14	2,040,949
Student Services	10	1,705,181		8	1,874,666	12	1,061,107	6	865,732	9	979,558
Total	315	35,456,394		329	38,819,168	295	33,137,520	325	34,887,047	347	37,961,076

Source: UAA Research and Graduate Studies Office, compiled by UAA/IR.

Notes:

1. N = number of proposals awarded
2. \$ = amount awarded

Research Grant Proposal Submissions by University Units and Fund Agencies

Fiscal Year 2015

Table 5.11

		Academic Support		Institutional Support		Instruction		Public Service		Research		Scholarship/ Fellowship		Student Services		TOTAL	
		N	\$	N	\$	N	\$	N	\$	N	\$	N	\$	N	\$	N	\$
College of Arts & Sciences																	
Federal Agencies						2	40,139	4	245,727	73	26,913,379					79	27,199,245
Local Government										1	2,158					1	2,158
Private Funding Sources		2	386,525			7	127,731	6	41,147	47	8,044,307					62	8,599,710
Alaska State Agencies								6	957,902	21	2,098,712					27	3,056,614
Total		2	386,525			9	167,870	16	1,244,776	142	37,058,556					169	38,857,727
College of Business & Public Policy																	
Federal Agencies										9	1,239,111					9	1,239,111
Local Government										4	327,845					4	327,845
Private Funding Sources								1	55,000	21	1,474,280	1	4,950			23	1,534,230
Alaska State Agencies								1	2,664	8	454,296					9	456,960
Total								2	57,664	42	3,495,532	1	4,950			45	3,558,146
College of Education																	
Private Funding Sources						2	45,211	1	2,040							3	47,251
Alaska State Agencies						1	84,366									1	84,366
Total						3	129,577	1	2,040							4	131,617
College of Engineering																	
Federal Agencies								1	14,710	5	1,311,414					6	1,326,124
Private Funding Sources		1	800			1	1,485			9	882,822			2	5,455	13	890,562
Alaska State Agencies						1	20,000			5	684,079					6	704,079
Total		1	800			2	21,485	1	14,710	19	2,878,315			2	5,455	25	2,920,765
College of Health																	
Federal Agencies						1	1,293,224	3	2,533,316	11	4,775,741					15	8,602,281
Local Government								1	7,010	1	15,812					2	22,822
Private Funding Sources				1	5,000	1	424,999	6	238,075	10	621,694	1	2,772			19	1,292,540
State Agencies						2	33,360	35	5,196,493	12	1,211,809	1	458,502			50	6,900,164
Other State Agencies						1	15,635			1	400,000					2	415,635
Total				1	5,000	5	1,767,218	45	7,974,894	35	7,025,056	2	461,274			88	17,233,442

Research Grant Proposal Submissions by University Units and Fund Agencies

Fiscal Year 2015

Table 5.11

	Academic Support		Institutional Support		Instruction		Public Service		Research		Scholarship/ Fellowship		Student Services		TOTAL	
	N	\$	N	\$	N	\$	N	\$	N	\$	N	\$	N	\$	N	\$
Community & Technical College																
Private Funding Sources	1	4,984	1	11,700	3	22,905							1	4,950	6	44,539
Alaska State Agencies					3	170,728									3	170,728
Total	1	4,984	1	11,700	6	193,633							1	4,950	9	215,267
Consortium Library																
Federal Agencies							1	29,963							1	29,963
Private Funding Sources							4	185,329							4	185,329
Alaska State Agencies							3	603,270							3	603,270
Total							8	818,562							8	818,562
Provost Operations																
Federal Agencies	1	2,249,979			2	33,000	11	2,195,997	6	1,570,314					20	6,049,290
Local Government					1	16,500	5	278,461							6	294,961
Private Funding Sources	1	15,648			5	747,249	11	1,056,422	1	4,750					18	1,824,069
Alaska State Agencies	1	20,000			1	40,000	5	7,457,053			2	2,163,900			9	9,680,953
Total	3	2,285,627			9	836,749	32	10,987,933	7	1,575,064	2	2,163,900			53	17,849,273
Senior Vice Provost																
Private Funding Sources	1	6,000					2	14,944							3	20,944
Vice Chancellor, Student Affairs																
Federal Agencies													1	1,140,930	1	1,140,930
Private Funding Sources							1	1,250					1	4,726	2	5,976
Alaska State Agencies							1	81,763							1	81,763
Total							2	83,013					2	1,145,656	4	1,228,669
VCAS, Athletics/Sport Center																
Private Funding Sources							1	4,800							1	4,800
Kenai Peninsula College																
Federal Agencies									1	174,336					1	174,336
Private Funding Sources	1	11,000			1	410,835	1	6,000							3	427,835
Alaska State Agencies					1	173,854									1	173,854
Total	1	11,000			2	584,689	1	6,000	1	174,336					5	776,025

Research Grant Proposal Submissions by University Units and Fund Agencies

Fiscal Year 2015

Table 5.11

		Academic Support		Institutional Support		Instruction		Public Service		Research		Scholarship/ Fellowship		Student Services		TOTAL	
		N	\$	N	\$	N	\$	N	\$	N	\$	N	\$	N	\$	N	\$
Kodiak College																	
Private Funding Sources				1	12,140											1	12,140
Alaska State Agencies				1	8,936	3	396,364									4	405,300
Other State Agencies		1	12,000													1	12,000
Total		1	12,000	2	21,076	3	396,364									6	429,440
Matanuska-Susitna College																	
Local Government						3	103,276									3	103,276
Private Funding Sources				1	5,000	1	14,996							2	210,824	4	230,820
Alaska State Agencies						2	132,933									2	132,933
Total				1	5,000	6	251,205							2	210,824	9	467,029
Prince William Sound College																	
Private Funding Sources				1	1,416	1	75,000	3	21,320							5	97,736
Alaska State Agencies						1	85,626									1	85,626
Total				1	1,416	2	160,626	3	21,320							6	183,362
UAA Total																	
Federal Agencies		1	2,249,979			5	1,366,363	20	5,019,713	105	35,984,295			1	1,140,930	132	45,761,280
Local Government						4	119,776	6	285,471	6	345,815					16	751,062
Private Funding Sources		7	424,957	5	35,256	22	1,870,411	37	1,626,327	88	11,027,853	2	7,722	6	225,955	167	15,218,481
Alaska State Agencies		1	20,000	1	8,936	15	1,137,231	51	14,299,145	46	4,448,896	3	2,622,402			117	22,536,610
Other State Agencies		1	12,000			1	15,635			1	400,000					3	427,635
Total		10	2,706,936	6	44,192	47	4,509,416	114	21,230,656	246	52,206,859	5	2,630,124	7	1,366,885	435	84,695,068

Source: UAA Research and Graduate Studies Office, compiled by UAA/IR.

Notes:

1. N = number of proposals submitted
2. \$ = request amount in the proposals
3. Proposals with a status of "Withdrawn" have been excluded

Research Grant Proposal Submissions by University Units and Research Types

Fiscal Years 2011 - 2015

Table 5.12

	FY2011		FY2012		FY2013		FY2014		FY2015	
	N	\$	N	\$	N	\$	N	\$	N	\$
College of Arts & Sciences										
Academic Support	2	35,566	1	500,000			1	2,500	2	386,525
Institutional Support			1	990,000						
Instruction	7	765,259	6	446,364	7	519,820	9	372,181	9	167,870
Public Service	8	145,467	12	1,385,824	9	1,440,761	14	1,979,418	16	1,244,776
Research	100	25,877,026	82	28,856,266	85	29,489,587	109	35,835,342	142	37,058,556
Scholarship/Fellowship			1	126,000			1	7,500		
Student Services			1	25,000						
Total	117	26,823,318	104	32,329,454	101	31,450,168	134	38,196,941	169	38,857,727
College of Business & Public Policy										
Instruction	1	198,000			2	131,020	3	33,125		
Public Service	21	3,167,150	25	4,363,764	23	2,840,018	1	4,900	2	57,664
Research	53	5,486,037	47	3,595,466	35	3,908,158	34	2,151,542	42	3,495,532
Scholarship/Fellowship							1	25,000	1	4,950
Total	75	8,851,187	72	7,959,230	60	6,879,196	39	2,214,567	45	3,558,146
College of Education										
Instruction	8	2,150,850	5	1,410,188	5	831,809	3	1,340,603	3	129,577
Public Service			1	12,000	1	12,000			1	2,040
Research	2	59,983								
Scholarship/Fellowship	2	134,000	2	117,000	1	138,000	1	110,000		
Total	12	2,344,833	8	1,539,188	7	981,809	4	1,450,603	4	131,617
College of Engineering										
Academic Support					1	117,897			1	800
Instruction			4	16,400			2	54,802	2	21,485
Public Service	1	16,087					2	94,050	1	14,710
Research	21	3,125,699	22	4,384,112	29	4,747,494	29	3,092,339	19	2,878,315
Student Services					2	12,572			2	5,455
Total	22	3,141,786	26	4,400,512	32	4,877,963	33	3,241,191	25	2,920,765
College of Health										
Academic Support					2	26,500	1	32,670		
Institutional Support			3	89,998	1	8,000	1	53,920	1	5,000
Instruction	6	6,838,112	8	3,973,966	6	1,915,657	6	2,148,275	5	1,767,218
Public Service	30	3,293,722	33	7,305,677	19	4,651,041	40	5,034,581	45	7,974,894
Research	28	4,105,778	41	10,353,146	23	5,252,205	38	7,630,298	35	7,025,056
Scholarship/Fellowship	2	65,000	1	603,632	1	2,000	2	1,868,945	2	461,274
Student Services	1	139,506								
Total	67	14,442,118	86	22,326,419	52	11,855,403	88	16,768,689	88	17,233,442

Research Grant Proposal Submissions by University Units and Research Types

Fiscal Years 2011 - 2015

Table 5.12

		FY2011		FY2012		FY2013		FY2014		FY2015	
		N	\$	N	\$	N	\$	N	\$	N	\$
Community & Technical College											
Academic Support	1	11,981		2	23,846					1	4,984
Instruction Support										1	11,700
Instruction	11	2,891,963		10	1,563,948	6	538,548	4	287,218	6	193,633
Public Service	1	115,000		4	134,156	2	106,664	1	7,280		
Research	-	-		1	20,000			1	2,979		
Scholarship/Fellowship	1	1,047									
Student Services										1	4,950
Total	14	3,019,991		17	1,741,950	8	645,212	6	297,477	9	215,267
Consortium Library											
Academic Support	1	13,145		2	62,500	3	4,141,394				
Public Service	8	1,217,365		7	1,133,691	8	761,395	6	4,579,587	8	818,562
Total	9	1,230,510		9	1,196,191	11	4,902,789	6	4,579,587	8	818,562
Research & Graduate Studies											
Research								1	17,395,848		
Provost Operations											
Academic Support	3	389,000		5	623,160	1	50,000	3	48,703	3	2,285,627
Institutional Support								1	120,148		
Instruction	8	1,306,857		8	3,687,739	4	268,150	5	5,364,211	9	836,749
Public Service	1	10,000		4	108,600	8	297,665	23	2,483,338	32	10,987,933
Research	2	7,627,053		7	7,697,661	2	24,496	4	102,715	7	1,575,064
Scholarship/Fellowship	5	1,029,999		4	642,500	4	2,010,212	2	1,210,000	2	2,163,900
Student Services	3	2,656,346		2	340,570	1	30,000				
Total	22	13,019,255		30	13,100,230	20	2,680,523	38	9,329,115	53	17,849,273
Senior Vice Provost Operations											
Academic Support								1	5,140	1	6,000
Public Service						4	18,600	4	46,768	2	14,944
Research								2	228,791		
Student Services						1	6,000				
Total						5	24,600	7	280,699	3	20,944
University Advancement											
Institutional Support						4	115,000	1	19,800		
Vice Chancellor, Student Affairs											
Academic Support				1	1,312,495						
Public Service										2	83,013
Student Services	2	2,253,033				3	1,324,750			2	1,145,656
Total	2	2,253,033		1	1,312,495	3	1,324,750			4	1,228,669
Vice Chancellor for Administration											
Institutional Support				1	275,000						
Public Service						1	10,000				
Total				1	275,000	1	10,000				

Research Grant Proposal Submissions by University Units and Research Types

Fiscal Years 2011 - 2015

Table 5.12

		FY2011		FY2012		FY2013		FY2014		FY2015	
		N	\$	N	\$	N	\$	N	\$	N	\$
VCAS Athletics/Sport Center											
Public Service										1	4,800
Kenai Peninsula College											
Academic Support										1	11,000
Instruction	6	1,083,286	5	893,558	6	1,128,243	9	2,011,743	2	584,689	
Public Service	3	24,000	4	18,000	2	13,000	2	12,000	1	6,000	
Research	1	165,000			2	113,641	1	60,992	1	174,336	
Total	10	1,272,286	9	911,558	10	1,254,884	12	2,084,735	5	776,025	
Kodiak College											
Academic Support		2	3,997,241	1	1,752,346					1	12,000
Institutional Support										2	21,076
Instruction	1	103,534	1	103,452	5	792,014	4	1,299,973	3	396,364	
Public Service			1	1,800							
Total	3	4,100,775	3	1,857,598	5	792,014	4	1,299,973	6	429,440	
Matanuska-Susitna College											
Institutional Support										1	5,000
Instruction	1	100,000	1	100,000	4	743,418	4	882,627	6	251,205	
Student Services									2	210,824	
Total	1	100,000	1	100,000	4	743,418	4	882,627	9	467,029	
Prince William Sound College											
Institutional Support				3	24,242					1	1,416
Instruction	3	390,712	3	368,036	4	1,359,940	4	541,262	2	160,626	
Public Service	3	26,569	2	18,500			5	47,225	3	21,320	
Student Services	3	2,665,227									
Total	9	3,082,508	8	410,778	4	1,359,940	9	588,487	6	183,362	
UAA Total											
Academic Support		9	4,446,933	12	4,274,347	7	4,335,791	6	89,013	10	2,706,936
Institutional Support				8	1,379,240	5	123,000	3	193,868	6	44,192
Instruction	52	15,828,573	51	12,563,651	49	8,228,619	53	14,336,020	47	4,509,416	
Public Service	76	8,015,360	93	14,482,012	77	10,151,144	98	14,289,147	114	21,230,656	
Research	207	46,446,576	200	54,906,651	176	43,535,581	219	66,500,846	246	52,206,859	
Scholarship/Fellowship	10	1,230,046	8	1,489,132	6	2,150,212	7	3,221,445	5	2,630,124	
Student Services	9	7,714,112	3	365,570	7	1,373,322			7	1,366,885	
Total	363	83,681,599	375	89,460,603	327	69,897,669	386	98,630,339	435	84,695,068	

Source: UAA Research and Graduate Studies Office, compiled by UAA/IR.

Notes:

1. N = number of proposals submitted
2. \$ = request amount in the proposals
3. Proposals with a status of "Withdrawn" have been excluded

Average Dollars Contributed per Alumni Donor University of Alaska Anchorage

Table 5.13

Fiscal Year	Undergraduate Alumni	# of Alumni Donors	% Total Alumni Donors	Dollars Contributed	\$ per Donor (Ave. Gift Amount)	Minimum Donation	Maximum Donation
1997-98	13,633	28	0.2%	\$3,358	\$120	\$15	\$501
1998-99	14,175	25	0.2%	\$5,887	\$235	\$10	\$1,750
1999-00	15,000	38	0.3%	\$5,671	\$149	\$6	\$2,100
2000-01	15,800	24	0.2%	\$4,048	\$169	\$25	\$650
2001-02	17,375	24	0.1%	\$20,619	\$859	\$20	\$2,250
2002-03	15,586	171	1.1%	\$43,701	\$256	\$5	\$15,000
2003-04	16,080	541	3.4%	\$62,233	\$115	\$5	\$5,000
2004-05	24,510	937	3.8%	\$178,672	\$191	\$2	\$50,000
2005-06	27,854	671	2.4%	\$83,781	\$125	\$2	\$6,000
2006-07	28,264	1,471	5.2%	\$220,529	\$150	\$1	\$26,995
2007-08	30,789	1,864	6.1%	\$247,620	\$133	\$1	\$8,666
2008-09	33,314	1,632	4.9%	\$202,138	\$124	\$1	\$72,000
2009-10	35,839	2,132	5.9%	\$290,036	\$136	\$1	\$32,323
2010-11	39,289	2,036	5.2%	\$272,889	\$134	\$1	\$12,906
2011-12	41,211	2,042	5.0%	\$374,992	\$184	\$5	\$50,960
2012-13	40,083	2,144	5.3%	\$356,601	\$166	\$1	\$25,000
2013-14	45,524	1,815	4.0%	\$303,111	\$167	\$1	\$12,630
2014-15	46,202	1,627	3.5%	\$394,072	\$242	\$1	\$75,000

Source: University Advancement Office

Notes:

1. Results do not include trusts and estates.
2. Alumni undergrad total reflects people with current addresses.
3. Alumni defined as individuals with conferred UAA degrees/certificates.
4. In 2004, Advancement upgraded their historical database which accounts for the dramatic alumni increase.
5. In 2014, Advancement researched lost alumni in database which accounts for the alumni increase.

Donations by Amount and Donor Type University of Alaska Anchorage

Table 5.14

	FY2012-13			FY2013-14			FY2014-15		
	# Donors	Total \$ Donated	Average Donations	# Donors	Total \$ Donated	Average Donations	# Donors	Total \$ Donated	Average Donations
\$1 - \$25									
Individual	614	13954.51	23	522	11954.51	23	586	12623.06	22
Group	6	93	16	2	45	23	8	119	15
Total	620	14,048	23	524	12,000	23	594	12,742	21
\$26 - \$50									
Individual	527	25,235	48	467	22,585	48	513	24,525	48
Group	28	1,172	42	4	180	45	15	694	46
Total	555	26,407	48	471	22,765	48	528	25,219	48
\$51 - \$100									
Individual	650	62,856	97	562	54,785	97	703	68,723	98
Group	35	3,221	92	12	1,175	98	23	2,121	92
Total	685	66,077	96	574	55,960	97	726	70,845	98
\$101 - \$500									
Individual	500	136,493	273	314	89,699	286	499	138,508	278
Group	82	24,942	304	42	15,690	374	75	23,958	319
Total	582	161,435	277	356	105,388	296	574	162,466	283
\$501 - \$1,000									
Individual	110	98,157	892	74	67,567	913	125	111,727	894
Group	39	33,061	848	23	18,816	818	32	27,929	873
Total	149	131,217	881	97	86,383	891	157	139,656	890
\$1,001 - \$10,000									
Individual	139	344,287	2,477	86	239,598	2,786	123	295,438	2,402
Group	80	265,053	3,313	49	171,885	3,508	96	386,393	4,025
Total	219	609,340	2,782	135	411,484	3,048	219	681,831	3,113
\$10,001 - \$50,000									
Individual	5	101,005	20,201	11	204,811	18,619	13	234,441	18,034
Group	33	957,263	29,008	26	804,752	30,952	43	1,112,382	25,869
Total	38	1,058,268	27,849	37	1,009,563	27,285	56	1,346,823	24,050
\$50,001 - \$100,000									
Individual	3	202,600	67,533	1	100,000	100,000	2	180,000	90,000
Group	12	824,766	68,731	6	456,645	76,108	12	952,426	79,369
Total	15	1,027,366	68,491	7	556,645	79,521	14	1,132,426	80,888
\$100,001 - \$500,000									
Individual	2	400,500	200,250	0	0	#DIV/0!	1	101,060	101,060
Group	15	2,840,163	189,344	5	793,590	158,718	13	2,503,610	192,585
Total	17	3,240,663	190,627	5	793,590	158,718	14	2,604,670	186,048
\$500,001+									
Individual	0	0		1	503,000		0	0	0
Group	5	3,651,403	730,281	1	600,000	600,000	2	2,132,568	1,066,284
Total	5	3,651,403	730,281	2	1,103,000	551,500	2	2,132,568	1,066,284
Total UAA									
Individual	2,550	921,731	361	2,038	736,215	361	2,565	997,262	389
Group	335	8,597,916	25,665	170	2,861,603	16,833	319	7,140,079	22,383
Total	2,885	9,519,647	3,300	2,208	3,597,817	1,629	2,884	8,137,341	2,822
% Change			6.3%			-50.6%			73.2%

Source: University Advancement Office

Definition of Terms

Academic Rank: The rank held by persons having the title of professor, associate professor, and assistant professor; title denotes academic rank exclusively; the title of instructor may also be a title of academic rank at the discretion of the policies and procedures approved for each university.

Academic Year (AY): At UAA and UA, is a 3-term, 12-month period beginning with Summer opening and ending with Spring closing commonly identified by reference to the calendar year in which it ends; e.g. AY 2012 (Also known as AY 11-12) includes Summer 2011, Fall 2011, and Spring 2012. (IPEDS, UA, and UAA IR).

Adjunct Faculty: Faculty with temporary assignments.

Adjusted Cohort: The result of removing any allowable exclusions from a cohort (or sub-cohort). For the Graduation Rates component, this is the cohort from which graduation and transfer-out rates are calculated; for the Fall Enrollment component, it is the cohort for calculating retention rate. Allowable exclusions are students who have died or were permanently disabled, left to serve in the armed forces, left to serve with a foreign aid service of the federal government (e.g. Peace Corp), or left to serve on official church mission.

Admitted Student: Applicant who has been granted an official offer to enroll in a postsecondary institution.

Applied Student: An individual who has fulfilled the institution's requirements to be considered for admission (including payment or waiving of the application fee, if any) and who has been notified of one of the following actions: admission, non-admission, placement on waiting list, or application withdrawn by applicant or institution.

Assistant Professor: At UAA, initial appointment criteria for persons who meet the minimum criteria for initial appointment to this rank as follows: Tripartite Academic = Terminal degree in the discipline or appropriate field and evidence of a potential for successful teaching, service, and research/creative activity; Bipartite Academic = Master's degree in the discipline or appropriate field and two years documented successful teaching and service; and Bipartite Vocational Education = Bachelor's degree in the discipline or appropriate field and two years documented successful teaching and/or related work experience beyond the apprentice level in an area directly related to the faculty appointment.

Associate Degree: An award conferred by the Alaska Board of Regents that signifies successful completion of a defined program of study. Note: at UAA, all associate degrees require a minimum of 60 semester hours but no more than 75 credit hours.

Associate Professor: At UAA, criteria for persons who meet the minimum criteria for initial appointment to this rank are as follows: Tripartite Academic = Terminal degree in the discipline or appropriate field and five years successful performance at the rank of assistant professor, including evidence of accomplishment in the area of research/creative activity; Bipartite Academic = Master's degree in the discipline or appropriate field and eight years successful teaching and service in an appropriate institution of higher education and evidence of professional development in the area of teaching or pedagogically related activities or creativity; and Bipartite Vocational Education = Master's degree in the discipline or appropriate field and three years documented successful teaching or Bachelor's degree plus 30 semester hours of systematic study in a closely related discipline.

Auxiliary Enterprises Expenditures: Expenditures for self-supporting operations of the institution that exist to furnish a service to students, faculty, or staff, and that charge a fee that is directly related to, although not necessarily equal to, the cost of the service. Examples include residence halls, food services, student health services, intercollegiate athletics (if self-supporting) college stores, faculty and staff parking.

Auxiliary Services Revenue: Revenues generated by or collected from the auxiliary enterprise operations of the institution that exist to furnish a service to students, faculty, or staff, and that charge a fee that is directly related to, although not necessarily equal to, the cost of the service. Auxiliary enterprises are managed as essentially self-supporting activities.

Baccalaureate Degree: A degree that normally requires at least 4 years (8 semesters) but not more than 5 years of full-time equivalent college-level work. It signifies successful completion of a defined program of study that consists of both lower- and upper-division coursework. Traditionally known as a four-year degree. At UAA, all Baccalaureate degrees require a minimum of 120 to 132 semester credits.

Budget: An estimate, often itemized, of expected income and expense for a given period in the future.

Calendar Year: A 12-month time period commencing January 1 and ending December 31.

Campus: A location of an institution that is geographically apart; and is permanent in nature; offers at least 50% of the courses of an educational program leading to a degree, certificate, or other educational credential; has its own faculty and administrative organization; and has its own budgetary and hiring authority. Examples: Anchorage, Mat-Su, Kenai Peninsula, Kodiak, and Prince William Sound.

Certification: A process by which an agency or association grants recognition to an individual who has met certain predetermined qualifications specified by that agency or association.

Capital Improvement Program (CIP) Receipts: CIP receipts are generated by chargeback to capital improvement projects to support CIP personal service administrative costs.

Class Standing: Class standing is an administrative classification and does not necessarily reflect progress toward completion of a degree. Class standing is based on total credits earned and is used for determining priority registration. (UAA catalog).

Clerical and Secretarial: A primary function or occupational activity category used to classify persons whose assignments typically are associated with clerical activities or are specifically of a secretarial nature. Includes personnel who are responsible for internal and external communications, recording and retrieving of data (other than computer programmer) and/or information and other paperwork required in an office. (IPEDS).

Cohort: A specific group of students established for tracking purposes. (IPEDS).

College: An aggregation of two or more academic departments into a major academic organizational unit. Its primary purposes are to provide governance, resource management and planning support for carrying out instruction, research and public service functions and offering programs. A College is typically supervised by a Dean who exercises authority and responsibility over all permanent and temporary faculty and staff assigned to departments under the college's jurisdiction. At UAA, there are six academic colleges. (UAA, UAA IR).

Community Campus: A location of an institution that is geographically apart and independent of the main campus and (1) is permanent in nature; (2) offers at least 50% of the courses of an educational program leading to a degree, certificate, or other educational credential; (3) has its own faculty and administrative organization; and (4) has its own budgetary and hiring authority. Within UAA, a community campus is supervised by a Director with emphasis on administrative and academic functions although also has responsibility for site and facilities. At UAA, they also offer programs of study leading to certificates and associate degrees. (UAA, UAA IR).

Course: A defined subset of instructional activity in which students enroll to acquire knowledge and/or complete graduation requirements. Each course is identified by a unique combination of two fields: Discipline (or its course prefix equivalent) and course number (an indicator of subject matter level). (UAA IR).

Course Level: The course number indicates the course level. Developmental courses are typically numbered 050 to 099, lower division courses are numbered 100 to 299, upper division courses are numbered 300 to 499, professional courses are numbered 500 to 599, and graduate courses are numbered 600 and above. Non-credit courses have a course number of 001 to 049 or do not have course numbers.

Degree: An award conferred by the Alaska Board of Regents as official recognition for the successful completion of a program of study.

Degree Seeking: At UAA, a student who has declared a degree-seeking intent by applying for and meeting university admission requirements to a degree or certificate program. They may apply for admission as undeclared majors and still be considered as degree seeking.

Department: A university-defined administrative organizational unit that organizes resources for creation and dissemination of knowledge within associated disciplines. Academic departments are responsible for creating, offering, and evaluating of courses, and providing instructional and research support to faculty who work in the disciplines.

Developmental Course: Course that provides basic or supplemental preparation for introductory college courses. This type of course is not applicable to certificate or associate, baccalaureate or graduate degree, even by petition. Courses are numbered from 060 to 099.

Discipline: A defined subset of knowledge and inquiry within the universe of knowledge as classified by the National Classification of Instructional Program (CIP). (UAA IR).

Doctoral Degree: The highest award a student can earn for graduate study. The Doctoral degree includes such degrees as Doctor of Education and the Doctor of Philosophy in many fields of study. (IPEDS).

Enrollment: A duplicate count of students enrolled ("seats occupied") in all course section offerings (credit or non-credit) on the official census date of each term. The same student is counted in each section of official enrollment; e.g. a student enrolled in 3 class sections is counted as 3 enrollees. (UAA IR).

Executive, Administrative and Managerial: Professional staff whose assignments require primary (and major) responsibility for management of the institution or a customarily recognized department or subdivision thereof. Assignments require the performance of work directly related to management policies or general business operations of the institution. It is assumed that assignments in this category customarily and regularly require the incumbent to exercise discretion and independent judgment and to direct the work of others. Excludes supervisors of the technical, clerical, craft, and service/maintenance workforce. (IPEDS).

Extended Site: A site or center outside the confines of the parent institution where courses are offered that are part of an organized program at the parent institution. The site is not considered to be temporary, but may be rented or made available to the institution at no cost by another institution or an organization, agency, or firm. Traditionally, a physical site located away from the main campus, e.g., Chugiak/Eagle River "campus", military education centers, etc. where students gather to receive instruction from university-affiliated faculty. (UAA, IPEDS).

Faculty Workload: Permanent and term faculty are awarded a workload with five (5) part assignments. Tripartite faculty assignments are generally three parts instructional (0.6 FTE), one part research (0.2 FTE), and one part service (0.2 FTE). Bipartite assignments are four parts instructional (0.8 FTE) and one part service (0.2 FTE).

Federal Receipts: All revenue received from the federal government. These include restricted federal grants from such agencies as the National Science Foundation, Department of Health and Human Services, National Institutes of Health, and other federal agencies, as well as additional federal funding for student financial aid and work-study programs.

Financial Aid: Federal Work Study, grants, loans to students (government and/or private), assistantships, scholarships, fellowships, tuition waivers, tuition discounts, employer aid (tuition reimbursement) and other monies (other than from relatives/friends) provided to students to meet expenses. This excludes loans from parents.

First-Time Freshman: A degree-seeking student who enrolls in an institution with no prior postsecondary experience. Includes students enrolled in academic or occupational programs. Also includes students enrolled in the fall term who attended college for the first time in the prior summer term, or students who entered with advanced standing (college credits earned before graduation from high school). (UAA IR).

Fiscal Year (FY): A 12-month period for maintaining financial records. Generally, the State of Alaska FY begins on July 1 and ends the following June 30. The federal fiscal year starts October 1 and ends September 30. (UAA IR).

Freshman: Admitted, first-time, continuing or returning first-year undergraduate student who has successfully completed, either at this university or approved credit from another college/university, a total of 29 credit hours or less. Excludes audit credit. (UAA IR).

Full-Time Equivalent Students (FTES): The full-time equivalent (FTE) of students is a single value providing a meaningful combination of full-time and part-time students. The convention used for calculation is annual Student Credit Hours (SCH) divided by 30 or 24 credit hours for undergraduate and graduate students respectively. If FTES is calculated for a single semester, then the divisor used is 15 or 12 credit hours for undergraduate and graduate students respectively. An additional convention sometimes used by UAA IR is total full-time students plus one-third part-time students. This calculation is used where SCH are not available.

Full-Time Student: An undergraduate student who is enrolled at UAA for 12 or more credits or a graduate student enrolled at UAA for 9 or more 600 level credits is classified as full-time. Audited courses, credit-by-examination courses, continuing education units (CEUs) and professional development courses (500 level) are not included in the computation for full-time status.

General Fund Appropriations: Legal authority to expend resources received by an institution through acts of a legislative body, except grants and contracts. These funds are for meeting current operating expenses and not for specific projects or programs. The most common example is a state's general appropriation. For UAA, this is the State of Alaska's appropriation to the university system.

Governance Unit: An administrative unit under the university's organizational structure at any level including campuses, colleges, and all functional departments.

Grade: A university-recognized symbol used to signify a student's academic performance and/or document actions taken by the university relative to a student in a particular class section. See UAA catalog for specific grading information. (UAA IR).

Graduate Certificate: A graduate-level certificate program is a coherent sequence of related graduate courses between 12 to 19 credit hours. These programs are designed to provide graduate education past the baccalaureate level and/or to enhance the education of students who already have a master's degree. (UAA Catalog).

Graduate Level Courses: Graduate-level courses require a background in the discipline and an ability to contribute to written and oral discourse on advanced topics in the field at a level beyond that required by a bachelor's degree. Graduate courses have course numbers of 600 - 699.

Graduate Student: A student who holds a baccalaureate and is admitted/accepted to a graduate program at UAA and enrolled in graduate level (600+) courses.

Graduation Rate: The percentage of first-time, full-time undergraduate certificate- and degree-seeking students enrolled in a given fall semester who earn a degree within six years (150% of the time to complete a four-year degree) or three years (150% of the time to complete a two-year degree). This rate is required for disclosure and/or reporting purposes under the Student Right-To-Know Act and is defined by the the US Department of Education. (IPEDS).

Grants and Contracts: Revenues from governmental agencies and nongovernmental parties that are for specific research projects, other types of programs, or for general institutional operations (if not governmental appropriations). Examples include research programs, training programs, student financial assistance, Pell Grants, etc. for which amounts are received or expenses are reimbursable under the terms of a grant or contract. (IPEDS).

Headcount (HEAD): An unduplicated count of unique individuals (in total or in a cohort) who are enrolled at UAA in credit courses on the official semester/term census date. The unduplicated count can be for a single semester or an academic year. Note: Headcount is unduplicated at the campus level but may be duplicated at the university level because students taking courses at more than one campus may be counted more than once. (UAA IR).

Institutional Support: A functional expense category that includes expenses for the day-to-day operational support of the institution. Includes expenses for general administrative services, central executive-level activities concerned with management and long range planning, legal and fiscal operations, space management, employee personnel and records, logistical services such as purchasing and printing, and public relations and development. Also includes information technology expenses related to institutional support activities. If an institution does not separately budget and expense information technology resources, the IT costs associated with student services and operation and maintenance of plant will also be applied to this function.

Instructional Expenditure: A functional expenditure category that includes expenditures of the colleges, schools, departments, and other instructional divisions of the institution and expenditures for departmental research and public service that are not separately budgeted. Includes expenditures for both credit and non-credit activities. Excludes expenditures if they are separately budgeted.

Instructional FTEF: That portion of a university employee's total assignment (budgeted or actual) that is designated to provide instruction and/or direct instructional support to students during the term/year regardless of payment or funding source for performing that function. Note: Academic Unit Profile separates Instructional Support (I) reported as Staff Expense. (UAA IR).

Instructor: Initial appointment criteria for persons who meet the minimum criteria to this rank are as follows: Tripartite Academic = competence in the profession or discipline and ability to effectively communicate training and subject matter to others. Appointees will hold minimal credentials; Bipartite Academic = competence in the profession or discipline and ability to effectively communicate training and subject matter to others. Appointees will hold minimal credentials; Bipartite Vocational Education = competence in the profession or discipline and ability to effectively communicate training and subject matter to others. Appointees will hold credentials. (Fac. Services).

Junior: An admitted undergraduate student who has successfully completed, either at this university or approved credit from another college/university, a total of 60-89 credit hours. Excludes audit credit. (UAA IR).

Lower Division Course: This type of course is usually a foundation course which introduces a field of knowledge or connects the foundation with advanced work in a given field. Courses are typically numbered between 100 and 299. Lower division courses are usually taken by freshmen and sophomores.

Major: A field of knowledge and inquiry a student may pursue as a primary interest focus. Although non-admitted students may take coursework associated with a major, only admitted students may formally declare a major. (UAA, UAA IR).

Master's Degree: A credential conferred by the Alaska Board of Regents signifying successful completion of a program of study consisting of courses/experiences above the Baccalaureate degree of at least 30 semester credits beyond the baccalaureate degree and at least 21 of those credits must be at the graduate course level. (UAA, UAA IR).

Minor: A field of knowledge and inquiry a student may pursue as a secondary interest focus. Minors are usually not required elements in a program of study, no degrees are awarded in a minor and must be earned in conjunction with a baccalaureate. (UAA).

Non-Credit Course: Courses offered as career development, adult basic education, continuing education or community interest instruction. Not applicable to any degree or certificate requirements (even by petition). They have no regular tuition but do have other special fees. These courses are number from 001 to 049.

Non-Degree Seeking (NDS): A student enrolled in courses for credit who is not recognized by the institution as seeking a degree or formal award. A student who has not formally declared intention of earning a degree from this university. A student can be NDS at one campus and degree seeking at another. (IPEDS, UAA IR).

Occupational Endorsement Certificate (OEC): Certificate requiring 9 to 29 hours to complete. This certificate provides specialized knowledge and skills needed in specific employment sectors.

Opening/Closing Freeze: The official dates set by the university state system each Fall, Spring and Summer terms when the university extracts ("freezes") data elements from UA system source data files for use in preparing official comparable management information for internal and external use. Opening/closing freezes vary by type of data file, e.g. student, finance, human resources. (UAA IR).

Origin at Entry: Origin at entry is the location of a student when first enrolling at the university: city for students from Alaska, state for students other than Alaska, and country for international students. (UA, UAA IR).

Part-Time Student: An undergraduate student with a term credit load of 1-11 semester credits or a graduate student with a term credit load of 1-8 semester credit hours of 600 level courses during a particular semester. (IPEDS, UAA IR).

Post-Baccalaureate Student: A student with a bachelor's degree admitted to and enrolled in a post-baccalaureate certificate program.

Post-Baccalaureate Certificate: An award that requires completion of an organized program of study equivalent from 24 to 60 semester credit hours beyond the bachelor's. It is designed for persons who have completed a baccalaureate degree, but does not meet the requirements of a master's degree. (IPEDS).

Pre-Major: Assigned to students who have been accepted for general admission to the degree level of their desired program but have not yet been formally accepted to a specific program. Usually they remain in this status while completing program prerequisites and/or department-level admission processes. Pre-majors have class standing and may be eligible for financial aid and international student visas. (UAA, UAA IR).

Professor: At UAA, initial appointment criteria (an extraordinary event) for persons who meet the minimum criteria for initial appointment to this rank are as follows: Tripartite Academic and Bipartite Academic = May be appointed based on exemplary academic performance. Terminal degree in the discipline or appropriate field and national or international reputation for excellence. Bipartite Vocational Education = May be appointed based on exemplary academic performance and Master's degree in vocational education and six years outstanding documented teaching and/or professional experience beyond the apprentice level or a national or international reputation for excellence in the discipline. Promotion criteria are as follows: Tripartite Academic = Terminal degree in the discipline or appropriate field and evidence of exemplary teaching, service and research/creative activity and five years at the rank of associate professor, of which three must be at this university; Bipartite Academic = Terminal degree in the discipline or appropriate field and evidence of exemplary teaching and service and five years at the rank of associate professor of which three must be at this university. Note: Master's degree shall be considered the terminal degree for former community college faculty who transferred to this university under 1987 BOR policy. (Fac. Services).

Program: Requires three components: a discipline or major (e.g., Psychology, Mathematics, International Studies); a degree or certificate level (e.g. Associate, Bachelors, Masters); and degree type (e.g. Associate of Applied Science, Bachelor of Arts).

Race/Ethnicity: Categories developed by the Office of Management and Budget (OMB) that are used to describe groups to which individuals belong, identify with, or belong in the eyes of the community. The designations are used to categorize U.S. citizens, resident aliens, and other eligible non-citizens. Individuals are asked to first designate ethnicity as: Hispanic or Latino or Not Hispanic or Latino. Second, individuals are asked to indicate one or more races that apply among the following: American Indian or Alaska Native, Asian, Black or African American, Native Hawaiian/Pacific Islander, White. (IPEDS).

Regular/Term Assignment: Individuals who are hired as permanent employees of the university and are eligible to receive salary and all benefits to perform their designated job duties. Term-funded employees can be regular employees. Their appointment is typically to an academic unit for an academic year. They are generally regarded as having a continuing appointment. (HRS).

Revenue: The inflow of resources or other enhancement of net assets of an institution or settlements of its liabilities from delivering or producing goods, rendering services, or other activities that constitute the institution's ongoing major or central operations. Includes revenues from fees and charges, auxiliary enterprises, and contributions and other non-exchange transactions. (IPEDS).

Semester: A calendar system that consists of two sessions called semesters during the academic year with about 15 weeks of instruction. (IPEDS).

Senior: An admitted undergraduate student who has successfully completed, either at this university or approved credit from another college/university, a total of 90+ credit hours. Excludes audit credit. (UAA IR).

Sophomore: An admitted undergraduate student who has successfully completed, either at this university or approved credit from another college/university, a total of 30-59 credit hours. Excludes audit credit. (UAA IR).

State and Local Grants: State and local monies awarded to the institution under state and local student aid programs, including the state portion of State Student Incentives Grants (SSIG).

Student: Any person for whom the university maintains an educational record and meets one or more of the following criteria: (1) officially enrolled in a course (credit or non-credit) offered under university authority, (2) is on an approved student exchange, internship, or other program of study. (UAA IR).

Student Assistant: Student who is employed by this university, predominantly through Work Study funds, to perform a variety of non-professional assignments in support of the university. (UAA IR).

Student Credit Hour (SCH): A weighted statistic that represents the students being served. In fixed credit courses it is the sum of the product of course section credit times the course section enrollment.

Student Fee: Amounts charged to students for items or services not covered by tuition or course fees; e.g. Student Health Center fee, application fee. (UAA IR).

Student Services Expenditure: A functional expenditure category that includes expenditures for admissions, registrar activities, and activities whose primary purpose is to contribute to students emotion and physical well-being and to their intellectual, cultural, and social development outside the context of their formal instructional program; e.g. student activities, student newspaper, intramural athletics, student organizations and student records. (IPEDS).

Summer Session: A summer session is shorter than a regular semester. The institution may have two or more sessions occurring in the summer months.

Technical/Paraprofessional: A primary function or occupational activity category used to classify persons whose assignments require specialized knowledge or skills which may be acquired through experience, apprenticeship, on-the-job-training, or academic work in occupationally specific programs that result in a 2-year degree or other certificate or diploma. Includes persons who perform some of the duties of a professional in a supportive role, which usually requires less formal training and/or experience than normally required for professional status.

Temporary Employee: Casual labor, adjunct faculty, and employees who do not work in budgeted position.

Tenure: Status of a personnel position with respect to permanence of the position according to the terms of Alaska Regents Policy 04.04.040(B). Its purpose is to assure an environment that will nurture academic freedom by providing employment security. At UAA, qualitative criteria for tenure are determined by individual schools and colleges. Faculty with initial appointment to full professor are awarded tenure at the time of appointment. Initial appointments to associate professor may be made with/without tenure but the latter must be reviewed for tenure no later than the 4th consecutive year of service. All non-tenured assistant professor appointees must be reviewed for tenure no later than the 7th consecutive year of service. Tenure may be awarded to faculty holding the rank of instructor, and time in the rank of instructor shall count toward tenure. Faculty who are not awarded tenure by the end of their mandatory year of review shall be offered a terminal appointment for one additional year of service. (BOR, IPEDS, Faculty Services).

Tenure Track: Faculty who are eligible to apply for tenure.

Tuition: The amount of money charged to students for instructional services. Tuition may be charged per semester or session, per course, or per credit and may vary.

UA Receipts: Private unrestricted gifts, grants, contracts, endowment revenue, sales and services of educational activities, vending machine revenue, rent, athletic ticket sales, etc. (UAA IR).

UA Scholar: A resident student attending an Alaska high school who is recruited by the UA system and offered a scholarship for placing in the top ten percent of his/her graduating class, regardless of graduating class size, based on GPA at the end of their junior year. The number of UA Scholars in a reported term is defined as the sum of the following three internal classification levels: (1) Paid UA Scholar—all enrolled students receiving a UA Scholar distribution in the reported term; (2) Non-Paid UA Scholar—paid in past term but not in reported term; and (3) Non-Paid Eligible Scholar—Never paid but eligible in reported term. (UAA IR).

Undergraduate Certificate: A formal award certifying the satisfactory completion of a postsecondary education program as approved by the Board of regents. Requires a minimum of 30 and a maximum of 60 semester credit hours.

Undergraduate Student: A student enrolled in a bachelor's degree program, an associate's degree program, or certificate program below the baccalaureate.

University of Alaska Anchorage (UAA): One of the post-secondary institutions of the University of Alaska statewide system of public higher education. It is accredited by the Northwest Commission on Colleges and Universities, which is recognized by the U.S. Department of Education.

Upper Division Course: Upper division courses require a background in the discipline recognized through course prerequisites, junior or senior standing, or competency based requirements. Course with numbers between 300 to 499. Upper division courses are usually taken by juniors and seniors.

Workforce Credentials: Composed of non-credit courses.