

University of Alaska Anchorage **FACT BOOK 2019-20**





Institutional Research
UNIVERSITY of ALASKA ANCHORAGE

November 2020

TO: UAA Community
FROM: Erin J. Holmes, PhD
Associate Vice Provost, Institutional Research
SUBJECT: 2019-20 Fact Book

This is the 2019-20 Fact Book for your use. An electronic version of the Fact Book is available at Institutional Research's public website (www.uaa.alaska.edu/ir) and its *IR-Reports* site on SharePoint. Also available at the site are detailed electronic reports on a range of topics.

Please feel free to contact the Office of Institutional Research with any questions, comments or suggestions you may have. Additionally, if you see items that need correction or would like to see other information, please let us know. Your feedback helps Institutional Research provide the information you need for your decision-making and planning.



UNIVERSITY *of* ALASKA ANCHORAGE

FACT BOOK 2019-20

November 2020

OFFICE OF INSTITUTIONAL RESEARCH

3211 Providence Drive, BOC3 - Suite 340

Anchorage, AK 99508

Phone: 907.786.1493

Fax: 907.786.1499

Dr. Erin Holmes, *Associate Vice Provost*

Yuan-Fang Dong, *Senior Research Associate*

Coy Gullett, *Director of Business Intelligence*

Ginger Mongeau, *Research Associate*

John Zetterman, *System Architect*

Sara Juday, *Writer/Editor/Graphic Designer*

Ester Bayne, *Research Assistant*

Unless otherwise noted, all numbers included in this Fact Book were compiled and produced by UAA's Office of Institutional Research using official closing freeze data in the UA Decision Support Database (DSD) data system, and are reported for University of Alaska. For data reported at the statewide system level (University of Alaska), please see UA in Review, produced by the University of Alaska Data Strategy and Institutional Research. This report can be viewed at the following link: <http://www.alaska.edu/swbir/ir/reports/ua-in-review/>

Special Thanks for Contributions

Ryan Buchholdt
Aaron Dotson
Lauren Hartman
Chris McConnell

Cover photos by James R. Evans, UAA Advancement

Front Cover:

Top: UAA's 2019 Fall Commencement at the Alaska Airlines Center.

Lower left: Biological Sciences Sophomore Michael Martinez studies ways to isolate rare earth metals from Alaskan coal in UAA's ConocoPhillips Integrated Science Building lab.

Lower middle: Physical Therapy Assistant program students in a small group lab, one of a handful of UAA courses that continued in-person delivery in summer 2020 with smaller-than usual groups and health screenings before each class.

Lower right: Alaska Native Studies Professor Maria Williams delivers the Native land acknowledgement at UAA's 2019 Faculty and Staff Welcome at Cuddy Hall.

Back Cover:

The Balancing Arcs statue, also known as "Happy Man."

The University of Alaska is an affirmative action/equal opportunity employer and educational institution. The University of Alaska does not discriminate on the basis of race, religion, color, national origin, citizenship, age, sex, physical or mental disability, status as a protected veteran, marital status, changes in marital status, pregnancy, childbirth or related medical conditions, parenthood, sexual orientation, gender identity, political affiliation or belief, genetic information, or other legally protected status. The University's commitment to nondiscrimination, including against sex discrimination, applies to students, employees, and applicants for admission and employment. Contact information, applicable laws, and complaint procedures are included on UA's statement of nondiscrimination available at www.alaska.edu/nondiscrimination.

TABLE OF CONTENTS

INTRODUCTION

University of Alaska Anchorage Locations	2
Introduction to the 2019-20 UAA Fact Book	3
University of Alaska Anchorage Leadership	4
Organizational Structure	5
Fast Facts About UAA Campuses	6
Fall 2019 Enrollment Summary	7
UAA Peer Institutions	8

STUDENTS

STUDENT HEADCOUNT, FALL CLOSING 2019	
By Characteristics and Campus	10
By Graduate/Undergraduate Level and Characteristics - UAA Total	12
STUDENT HEADCOUNT BY CHARACTERISTICS, FALL 2015-2019	
University of Alaska Anchorage Total	14
First-time Freshman	16
STUDENT HEADCOUNT BY DECLARED PROGRAMS OF STUDY, FALL 2015-2019	
By Major, Degree Type, and Campus/College	20
LONG TERM TRENDS OF STUDENT HEADCOUNT, ACADEMIC YEARS 2011-2020	
By Campus and Term	37
APPLIED, ACCEPTED, AND ENROLLED AT UAA, FALL 2015-2019	
Undergraduate Students	38
Graduate Students	40

ENROLLMENT

STUDENT CREDIT HOURS	
By Discipline, Five-Year Trend: Fall Semesters 2015-2019	43
By Semester and Campus, Long-Term Trend, Academic Years 2001-2020	56
e-LEARNING	
Headcount, Seat Count & SCH by Origin of Courses vs. Origin of Students Admitted, Academic Years 2016-2020	58

AWARDS

DEGREE AND CERTIFICATE AWARDS CONFERRED	
By Campus Summary, Academic Years 2016-2020	63
By Award Type, Academic Years 2016-2020	64
Degree and Certificate Awards by Classification of Instructional Program (CIP), Academic Years 2016-2020	65
Long-Term Trends, Academic Years 1989-2020	66

FACULTY AND STAFF

EMPLOYEES

Employee Headcount Trends by UAA Administrative Unit, Fall 2015-2019 (All Employees)	68
Employee Headcount Trends by UAA Administrative Unit, Fall 2015-2019 (Regular and Term)	69
Employee Headcount Trends by UAA Administrative Unit, Fall 2015-2019 (Temporary)	70
Employee Characteristics by Campus, Fall 2019 (All Employees)	71
Employee Characteristics by Campus, Fall 2019 (Regular and Term)	72
Employee Characteristics by Campus, Fall 2019 (Temporary)	73

FACULTY

Regular and Term Faculty Characteristics by Campus, Fall 2019	74
Student Credit Hours Generated by Faculty Type, Fall 2019	76
Number of Course Sections Taught by Faculty Type, Fall 2019	77

FINANCE, GRANTS AND GIVING

BUDGET

Authorized State Appropriation Budget, Fiscal Years 2016-2020	80
Total Authorized Budget, Fiscal Years 2016-2020	80
Actual State Appropriation Expenditures, Fiscal Years 2015-2019	81
Total Actual Expenditures, Fiscal Years 2015-2019	81
Summary of UAA Expenditures by Functional Categories, Fiscal Years 2016-2020	82
Authorized UAA Expenditure Budget (Unrestricted) Instruction Component Only, Fiscal Years 2016-2020	84
Summary of UAA Revenue Received, Fiscal Years 2016-2020	85

RESEARCH GRANTS

Awards by University Units and Fund Agencies, Fiscal Year 2020	86
Awards by University Units and Functional Categories, Fiscal Years 2016-2020	89
Proposal Submissions by University Units and Fund Agencies, Fiscal Year 2020	92
Proposal Submissions by University Units and Functional Categories, Fiscal Years 2016-2020	95

ALUMNI GIVING

Average Dollars Contributed per Alumni Donor, Fiscal Years 1999-2020	98
Donations by Amount and Donor Type, Fiscal Years 2018-2020	99

TUITION

UAA Tuition Rate History, Fiscal Years 2017-2021	100
--	-----

DEFINITION OF TERMS

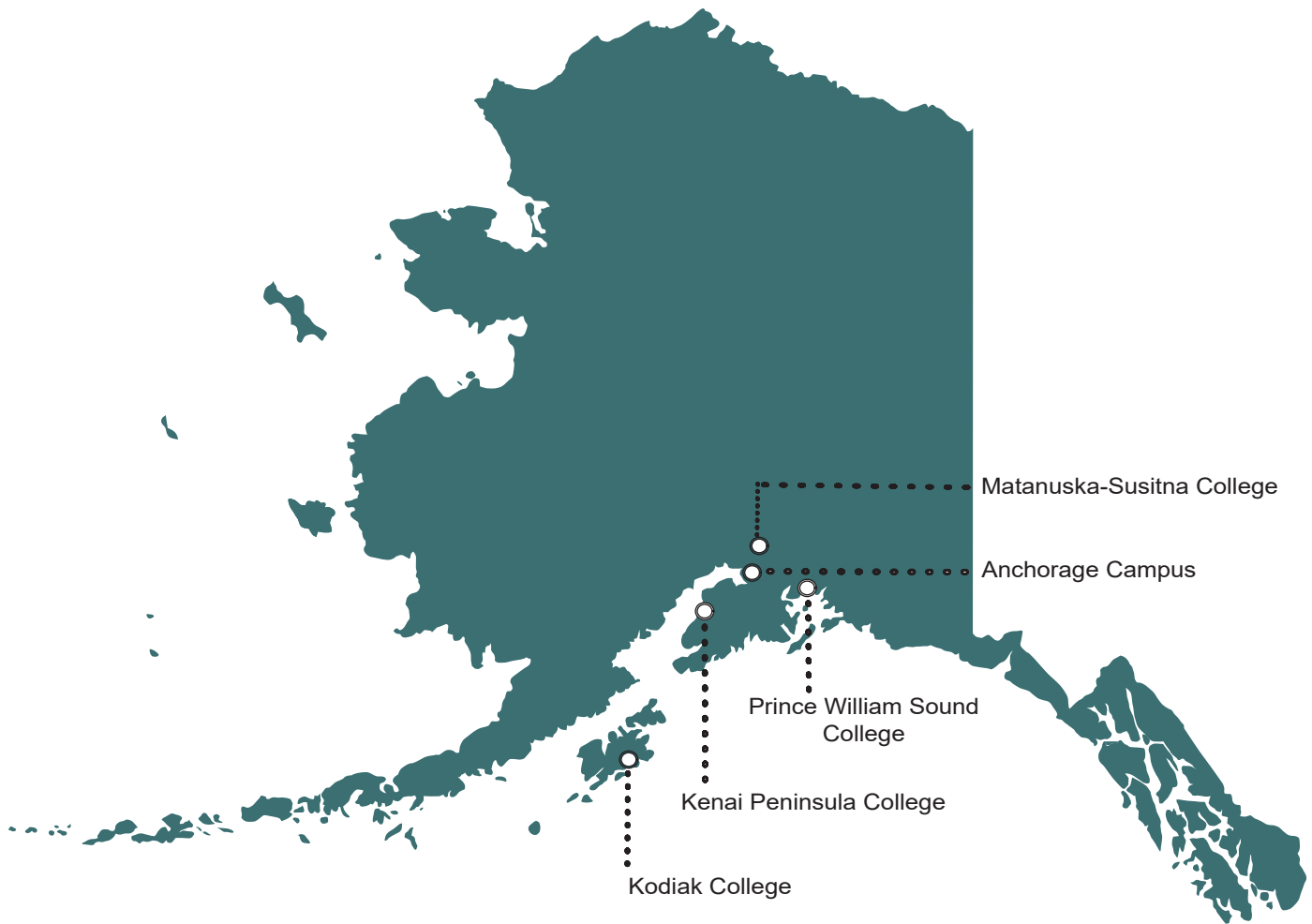
Definitions	102
-------------	-----

Introduction



UNIVERSITY *of* ALASKA ANCHORAGE

LOCATIONS



INTRODUCTION

The University of Alaska Anchorage (UAA) is a multi-campus university that serves nearly 21,000 students each year and has a service area as expansive as the state of Montana. UAA is the largest university in the state and one of three separately accredited universities in the University of Alaska Statewide System.

For a young institution, UAA has an extremely complex history. The present university was created in 1987 following a statewide reorganization that merged a university with several community colleges. In one form or another, these institutions have offered educational opportunities to the communities of southcentral Alaska since the 1950s.

Partly due to this unique history, UAA today is an open access university with one of the broadest missions in higher education. UAA offers instruction ranging from Adult Basic Education to graduate and professional education, serves both traditional and non-traditional students, and confers awards ranging from occupational endorsements to associate, baccalaureate, master's, and doctoral degrees. Through partnerships and affiliate programs, UAA also offers instruction leading to medical and other professional degrees. Through its centers and institutes, the university's research helps Alaskans to improve their health, public policy, education, training, economic development, and quality of life.

UAA is accredited by the Northwest Commission of Colleges and Universities (NWCCU). Many individual academic programs have additional specialized accreditation from professional associations and other external entities.

UAA is classified by the Carnegie Foundation for the Advancement of Teaching as a public Master's Colleges & Universities: Larger Programs, with a special classification for Community Engagement. Distinctive educational opportunities include undergraduate research, national and international exchanges, and study abroad programs. UAA has been named to the 2020-21 *Military Friendly Schools list*, the 12th consecutive year by Victory Media.

Major Campuses and Academic Units

Anchorage Campus

- College of Arts & Sciences
- College of Business & Public Policy
- College of Engineering
- College of Health
- Community & Technical College
- University Honors College
- Graduate School*

Kenai Peninsula College

Kodiak College

Matanuska-Susitna College

Prince William Sound College

* Supports the graduate curriculum and research offered through all Colleges and Schools.



UNIVERSITY of ALASKA ANCHORAGE

LEADERSHIP

The mission of the University of Alaska Anchorage is to discover and disseminate knowledge through teaching, research, engagement, and creative expression.

Located in Anchorage and on community campuses in Southcentral Alaska, UAA is committed to serving the higher education needs of the state, its communities, and its diverse peoples.

The University of Alaska Anchorage is an open-access university with academic programs leading to occupational endorsements; undergraduate and graduate certificates; and associate, baccalaureate, and graduate degrees in a rich, diverse, and inclusive environment.

CATHY SANDEEN, *Chancellor*

DENISE RUNGE, *Provost and Executive Vice Chancellor, Academic Affairs (effective 7/2020)*

JOHN STALVEY, *Interim Provost and Executive Vice Chancellor, Academic Affairs (7/2018 to 6/2020)*

BILL JACOB, *Interim Vice Chancellor, Administrative Services (effective 6/2020)*

BEVERLY COTTON SHUFORD, *Vice Chancellor, Administrative Services (5/2018 to 5/2020)*

BRUCE SCHULTZ, *Vice Chancellor, Student Affairs*

MEGAN OLSON, *Vice Chancellor, University Advancement*

CHRISTI BELL, *Associate Vice Chancellor & Director, Business Enterprise Institute*

AARON DOTSON, *Associate Vice Chancellor, Office of Research*

JENNIFER BOOZ, *Chief Diversity Officer (effective 7/2020)*

RENEE CARTER-CHAPMAN, *Senior Vice Provost, Academic Affairs*

SARA CHILDRESS, *Director & Title IX Coordinator, Office of Equity & Compliance*

ANCHORAGE COLLEGES

College of Arts & Sciences

John Petraitis, *Interim Dean*

College of Business & Public Policy

John Nofsinger, *Interim Dean (effective 3/2020)*

Karen Markel, *Dean (6/2018 to 6/2020)*

College of Engineering

Kenrick Mock, *Interim Dean*

College of Health

Jeff Jessee, *Dean & Vice Provost of Health Programs*

Community & Technical College

Raymond Weber, *Interim Dean (effective 7/2020)*

Denise Runge, *Dean (7/2016 to 6/2020)*

Consortium Library

Steve Rollins, *Dean*

University Honors College

Claudia Lampman, *Dean (effective 7/2020)*

John Mouracade, *Dean (8/2014 to 6/2020)*

COMMUNITY CAMPUSES

Kenai Peninsula College

Gary Turner, *Director*

Kodiak College

Jacelyn Keys, *Director (effective 8/2020)*

Betty Walters, *Interim Director (10/2018 to 7/2020)*

Matanuska-Susitna College

Talis Colberg, *Director*

Prince William Sound College

J. Dan O'Connor, *Director*

UNIVERSITY GOVERNANCE

Faculty Senate

Kelly Smith, *President, 2020-21*

Scott Downing, *President, 2019-20*

Staff Council

Dawn Humenik, *Co-President, 2020-21*

Tania Rowe, *Co-President, 2019-21*

John Moore, *Past Co-President, 2020-21*

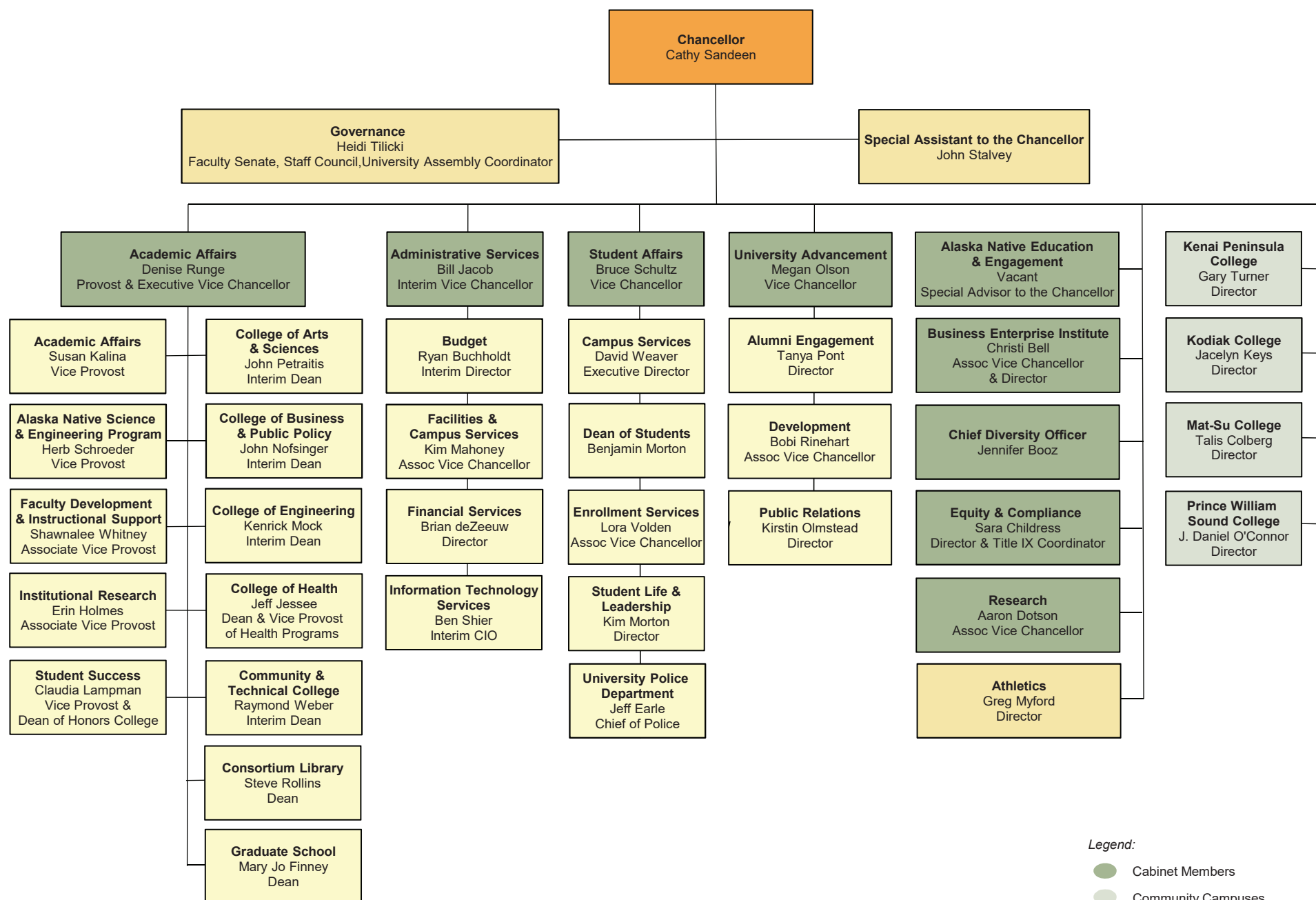
USUAA Student Government

Brooke Hansen, *President, 2020-21*

Jamie Bagley, *President, Spring 2020*

Clare Baldwin, *President, Fall 2019*

ORGANIZATIONAL STRUCTURE



Legend:

● Cabinet Members

● Community Campuses

FAST FACTS

UAA TOTAL

STUDENTS

AY 19-20 Student Credit Hours	266,473
Headcount	20,974
Full-time Equivalent	9,062
Awards Granted	2,339
Fall 2019 Headcount	14,989
Full-time	5,679
Part-time	9,310

FACULTY AND STAFF - FALL 2019

Regular Faculty	557
Adjunct Faculty	465
Staff	1,151

FACILITIES

Square Feet	3,342,007
-------------	-----------

FINANCE - FY 2020 (IN \$000)

Univ. Generated Revenue	\$162,205.6
Research Focus Expenditure	\$19,652.1
Total Budget Authority	\$287,884.7
Gross Tuition	\$66,779.3
TVEP Awards	\$2,465.4

Anchorage Campus

STUDENTS

AY 19-20 Student Credit Hours	212,763
Headcount	17,172
Full-time Equivalent	7,276
Awards Granted	2,097
Fall 2019 Headcount	11,879
Full-time	5,105
Part-time	6,774

FACULTY AND STAFF - FALL 2019

Regular Faculty	483
Adjunct Faculty	281
Staff	945

FACILITIES

Square Feet	2,894,400
-------------	-----------

FINANCE - FY 2020 (IN \$000)

Univ. Generated Revenue	\$145,294.0
Research Focus Expenditure	\$19,652.1
Total Budget Authority	\$251,260.5
Gross Tuition	\$55,419.7
TVEP Awards	\$1,932.9

Kenai Peninsula College

STUDENTS

AY 19-20 Student Credit Hours	22,886
Headcount	3,579
Full-time Equivalent	760
Awards Granted	85
Fall 2019 Headcount	2,142
Full-time	702
Part-time	1,440

FACULTY AND STAFF - FALL 2019

Regular Faculty	32
Adjunct Faculty	83
Staff	91

FACILITIES

Square Feet	183,214
-------------	---------

FINANCE - FY 2020 (IN \$000)

Univ. Generated Revenue	\$7,544.3
Research Focus Expenditure	\$0.0
Total Budget Authority	\$14,723.7
Gross Tuition	\$5,064.1
TVEP Awards	\$189.5

Kodiak College

STUDENTS

AY 19-20 Student Credit Hours	5,869
Headcount	1,204
Full-time Equivalent	196
Awards Granted	27
Fall 2019 Headcount	641
Full-time	202
Part-time	439

FACULTY AND STAFF - FALL 2019

Regular Faculty	13
Adjunct Faculty	16
Staff	26

FACILITIES

Square Feet	44,981
-------------	--------

FINANCE - FY 2020 (IN \$000)

Univ. Generated Revenue	\$1,657.7
Research Focus Expenditure	\$0.0
Total Budget Authority	\$5,331.1
Gross Tuition	\$1,230.1
TVEP Awards	\$70.4

Matanuska-Susitna College

STUDENTS

AY 19-20 Student Credit Hours	19,691
Headcount	2,150
Full-time Equivalent	655
Awards Granted	114
Fall 2019 Headcount	1,409
Full-time	577
Part-time	832

FACULTY AND STAFF - FALL 2019

Regular Faculty	22
Adjunct Faculty	59
Staff	47

FACILITIES

Square Feet	152,145
-------------	---------

FINANCE - FY 2020 (IN \$000)

Univ. Generated Revenue	\$5,176.7
Research Focus Expenditure	\$0.0
Total Budget Authority	\$11,147.5
Gross Tuition	\$4,252.3
TVEP Awards	\$193.1

Prince William Sound College

STUDENTS

AY 19-20 Student Credit Hours	5,264
Headcount	1,229
Full-time Equivalent	176
Awards Granted	16
Fall 2019 Headcount	821
Full-time	130
Part-time	691

FACULTY AND STAFF - FALL 2019

Regular Faculty	7
Adjunct Faculty	26
Staff	42

FACILITIES

Square Feet	67,267
-------------	--------

FINANCE - FY 2020 (IN \$000)

Univ. Generated Revenue	\$2,532.8
Research Focus Expenditure	\$0.0
Total Budget Authority	\$5,421.9
Gross Tuition	\$813.1
TVEP Awards	\$79.5

Sources and Notes:

- Students: UAA Data Strategy and Institutional Research (DSIR) Decision Support Database (DSD) data at semester closing. Student Credit Hours include auditors. Awards Granted include: Undergraduate Certificates, Associate, Bachelor, Master, Doctorate, Endorsements, Licensure, Post Graduate, Post Baccalaureate, and Graduate Certificates. Headcount is for credit students only; students who enrolled in multiple campuses have been counted only once in the UAA total.
- Faculty & Staff: UAA Data Strategy and Institutional Research DSD data at Fall Freeze. Staff includes full-time & part-time employees but does not include graduate or student assistants.
- Facilities: UAA Facilities and Campus Services.
- Finance: UAA Office of Budget. Research Focus Expenditure is defined by UA Statewide as Basic Research. TVEP stands for Technical/Vocational Education Program.

FALL 2019 ENROLLMENT SUMMARY

Course Level	UAA Total	Anchorage Campus	Kenai Peninsula	Kodiak College	Mat-Su College	PW Sound College
Student Headcount						
Total Credit Headcount	14,989.0	11,879.0	2,142.0	641.0	1,409.0	821.0
Full-time	5,679.0	5,105.0	702.0	202.0	577.0	130.0
Part-time	9,310.0	6,774.0	1,440.0	439.0	832.0	691.0
Full-time as a % of Total	37.9%	43.0%	32.8%	31.5%	41.0%	15.8%
All Students (includes credit and non-credit students)	15,174.0	11,905.0	2,259.0	683.0	1,409.0	821.0
Credit Hours						
Developmental (050-099)	2,789.0	1,825.0	537.0	88.0	333.0	6.0
Lower Division (100-299)	86,265.5	61,886.0	9,722.0	2,726.0	9,313.0	2,618.5
Upper Division (300-499)	26,628.0	26,078.0	496.0		54.0	
Professional (500-599)	4,431.0	4,389.0	42.0			
Graduate (600-699)	4,527.0	4,527.0				
Credit Hours Total	124,640.5	98,705.0	10,797.0	2,814.0	9,700.0	2,624.5
Audited Hours	169.0	95.0	54.0	3.0	13.0	4.0
Enrollment (Seat Count)						
Developmental (050-099)	890.0	568.0	180.0	33.0	106.0	3.0
Lower Division (100-299)	31,177.0	22,490.0	3,370.0	984.0	3,198.0	1,135.0
Upper Division (300-499)	9,266.0	9,065.0	183.0		18.0	
Professional (500-599)	2,610.0	2,568.0	42.0			
Graduate (600-699)	1,478.0	1,478.0				
Enrollment Total	45,421.0	36,169.0	3,775.0	1,017.0	3,322.0	1,138.0
Student FTE						
Developmental (050-099)	185.9	121.7	35.8	5.9	22.2	0.4
Lower Division (100-299)	5,751.0	4,125.7	648.1	181.7	620.9	174.6
Upper Division (300-499)	1,775.2	1,738.5	33.1		3.6	
Professional (500-599)	369.3	365.8	3.5			
Graduate (600-699)	377.3	377.3				
Student FTE Total	8,458.7	6,728.9	720.5	187.6	646.7	175.0
Course Sections						
Developmental (050-099)	45.0	24.0	10.0	4.0	6.0	1.0
Lower Division (100-299)	1,675.0	1,082.0	237.0	87.0	197.0	72.0
Upper Division (300-499)	632.0	606.0	23.0		3.0	
Professional (500-599)	240.0	237.0	3.0			
Graduate (600-699)	240.0	240.0				
Course Sections Total	2,832.0	2,189.0	273.0	91.0	206.0	73.0
Canceled Credit Sections	312.0	199.0	45.0	16.0	42.0	10.0

Source: UA Data Strategy and Institutional Research (DSIR) Decision Support Database (DSD) data system at semester closing freeze.

Notes:

1. Headcount is unduplicated and includes auditors.
2. Student credit hours do not include audited hours.
3. Total Course Sections do not include canceled sections.
4. Canceled sections are those canceled after students enrolled.

PEER INSTITUTIONS

Arkansas Tech University

Boise State University

CUNY College of Staten Island

Ferris State University

Florida Gulf Coast University

Idaho State University

Indiana University-Purdue University - Fort Wayne

McNeese State University

Northern Kentucky University

Northwestern State University of Louisiana

Purdue University - Calumet Campus

The University of Texas at Brownsville

Troy University

University of Arkansas at Little Rock

University of West Florida

Weber State University

Western Kentucky University

Youngstown State University

Students

Headcount by Characteristics and Campus UAA - Fall Closing 2019

Table 1.01

	UAA Total	% of Total	Anchorage Campus	Kenai Peninsula	Kodiak College	Mat-Su College	PW Sound College
UAA Total	14,989	100.0%	11,879	2,142	641	1,409	821
Admission Type							
New	2,010	13.4%	1,368	301	72	373	66
Continue	9,213	61.5%	7,876	1,304	406	791	270
Returned	3,720	24.8%	2,608	515	158	242	484
Transfer	46	0.3%	27	22	5	3	1
Class Standing							
First-time Freshman	1,376	9.2%	1,119	145	30	205	33
Freshman	1,798	12.0%	1,323	363	127	245	72
Sophomore	1,921	12.8%	1,589	407	150	246	64
Junior	1,619	10.8%	1,437	281	81	140	41
Senior	2,696	18.0%	2,517	303	78	109	40
Graduate	652	4.3%	651	1		1	
Non-Degree/Other UA Prog	4,927	32.9%	3,243	642	175	463	571
Full-time							
Graduate	156	1.0%	156	1			
Undergraduate	5,523	36.8%	4,949	701	202	577	130
Total	5,679	37.9%	5,105	702	202	577	130
Part-time							
Graduate	562	3.7%	555	3	1	2	2
Undergraduate	8,748	58.4%	6,219	1,437	438	830	689
Total	9,310	62.1%	6,774	1,440	439	832	691
Gender							
Female	8,959	59.8%	7,265	1,316	436	851	352
Male	5,840	39.0%	4,536	737	202	539	456
Not Reported	190	1.3%	78	89	3	19	13
Race/Ethnicity							
African American	391	2.6%	359	42	15	24	9
Alaska Native	687	4.6%	500	120	53	66	48
Alaska Native Multirace	764	5.1%	647	91	39	74	31
American Indian	85	0.6%	63	13	1	11	12
Asian	866	5.8%	785	82	60	27	15
Hispanic	979	6.5%	828	139	46	78	35
Hispanic Multirace	85	0.6%	76	11	3	9	1
Native Hawaiian/Pacific Island	359	2.4%	301	47	39	15	16
White	8,159	54.4%	6,432	1,136	299	931	426
Non Hispanic Multirace	801	5.3%	688	86	27	76	21
Non Resident Alien	251	1.7%	230	25	10	2	9
Not Reported	1,562	10.4%	970	350	49	96	198

Headcount by Characteristics and Campus UAA - Fall Closing 2019

Table 1.01

	UAA Total	% of Total	Anchorage Campus	Kenai Peninsula	Kodiak College	Mat-Su College	PW Sound College
Age							
0 - 17	1,189	7.9%	439	246	84	330	126
18 - 18	1,132	7.6%	857	158	29	176	30
19 - 19	1,099	7.3%	894	156	60	146	33
20 - 24	4,046	27.0%	3,523	600	172	332	109
25 - 29	2,129	14.2%	1,785	340	99	135	107
30 - 39	2,571	17.2%	2,108	367	120	160	180
40 - 49	1,471	9.8%	1,231	158	45	79	77
50 - 59	910	6.1%	759	64	21	35	69
60 & Over	440	2.9%	282	53	11	16	89
Not Reported	2	0.0%	1				1
Residency Origin							
In State	13,602	90.7%	10,688	1,979	599	1,356	733
Out of State	1,106	7.4%	933	135	31	50	79
International	251	1.7%	230	25	10	2	9
Not Reported	30	0.2%	28	3	1	1	
Degree Level							
Certificate	189	1.3%	132	25	13	25	9
Associate	2,402	16.0%	1,529	625	225	432	131
Bachelor	6,797	45.3%	6,303	846	228	488	110
Master's	573	3.8%	572	1		1	
Doctorate	37	0.2%	37				
Graduate Certificate	42	0.3%	42				
Post Baccalaureate Certificate	22	0.1%	21	3			
Non-Degree/Other UA Prog	4,927	32.9%	3,243	642	175	463	571
Attempted Credit Hours							
0 - 2.9	2,156	14.4%	1,661	116	27	27	438
3 - 5.9	2,697	18.0%	2,286	1,237	459	568	272
6 - 8.9	2,500	16.7%	1,839	461	96	267	55
9 - 11.9	2,068	13.8%	1,713	154	33	284	15
12 - 14.9	3,688	24.6%	2,810	144	20	236	27
15 & Over	1,880	12.5%	1,570	30	6	27	14

Source: UA Data Strategy and Institutional Research (DSIR) Decision Support Database (DSD) data system at semester closing.

Notes:

1. UAA Total includes Anchorage, Kenai, Kodiak, Matanuska-Susitna, and Prince William Sound College. Headcount is unduplicated and includes only credit students. Students who enrolled in multiple campuses have been counted only once in UAA Total.
2. Included are students enrolled in credit courses at the 050 level and above, including auditors.
3. Percentages may not add to 100% due to rounding.
4. See Definition of Terms for meaning of First-time Freshman.
5. Non-Degree/Other UA Programs = Non-Degree seeking students or other University of Alaska program degree seekers.
6. New transfer code added to Admission Type was not captured in freeze data resulting in an under count of Transfer and an over count of Continue starting in fall 2018.

Headcount by Graduate/Undergraduate Level and Characteristics

UAA - Fall Closing 2019

Table 1.02

	Graduate						Undergraduate	
	UAA Total	% of Total	UAA Programs	Other UA Prog	Total	% of Total	Total	% of Total
UAA Total	14,989	100.0%	652	66	718	100.0%	14,271	100.0%
Admission Type								
New	2,010	13.4%		7	7	1.0%	2,003	14.0%
Continue	9,213	61.5%	620	27	647	90.1%	8,566	60.0%
Returned	3,720	24.8%	32	32	64	8.9%	3,656	25.6%
Transfer	46	0.3%					46	0.3%
Class Standing								
First-time Freshman	1,376	9.2%					1,376	9.6%
Freshman	1,798	12.0%					1,798	12.6%
Sophomore	1,921	12.8%					1,921	13.5%
Junior	1,619	10.8%					1,619	11.3%
Senior	2,696	18.0%					2,696	18.9%
Graduate	652	4.3%	652		652	90.8%		
Non-Degree/Other UA Prog	4,927	32.9%		66	66	9.2%	4,861	34.1%
Full-time								
Graduate	156	1.0%	155	1	156	21.7%		
Undergraduate	5,523	36.8%					5,523	38.7%
Total	5,679	37.9%	155	1	156	21.7%	5,523	38.7%
Part-time								
Graduate	562	3.7%	497	65	562	78.3%		
Undergraduate	8,748	58.4%					8,748	61.3%
Total	9,310	62.1%	497	65	562	78.3%	8,748	61.3%
Gender								
Female	8,959	59.8%	432	51	483	67.3%	8,476	59.4%
Male	5,840	39.0%	219	15	234	32.6%	5,606	39.3%
Not Reported	190	1.3%	1		1	0.1%	189	1.3%
Race/Ethnicity								
African American	391	2.6%	17	1	18	2.5%	373	2.6%
Alaska Native	687	4.6%	28	6	34	4.7%	653	4.6%
Alaska Native Multirace	764	5.1%	39	4	43	6.0%	721	5.1%
American Indian	85	0.6%	3		3	0.4%	82	0.6%
Asian	866	5.8%	24		24	3.3%	842	5.9%
Hispanic	979	6.5%	28	2	30	4.2%	949	6.6%
Hispanic Multirace	85	0.6%	3		3	0.4%	82	0.6%
Native Hawaiian/Pacific Island	359	2.4%	7	1	8	1.1%	351	2.5%
White	8,159	54.4%	430	47	477	66.4%	7,682	53.8%
Non Hispanic Multirace	801	5.3%	24	1	25	3.5%	776	5.4%
Non Resident Alien	251	1.7%	21	2	23	3.2%	228	1.6%
Not Reported	1,562	10.4%	28	2	30	4.2%	1,532	10.7%

Headcount by Graduate/Undergraduate Level and Characteristics

UAA - Fall Closing 2019

Table 1.02

	Graduate						Undergraduate	
	UAA	% of	UAA	Other UA		% of		% of
	Total	Total	Programs	Prog	Total	Total	Total	Total
Age								
0 - 17	1,189	7.9%					1,189	8.3%
18 - 18	1,132	7.6%					1,132	7.9%
19 - 19	1,099	7.3%					1,099	7.7%
20 - 24	4,046	27.0%	58	3	61	8.5%	3,985	27.9%
25 - 29	2,129	14.2%	157	16	173	24.1%	1,956	13.7%
30 - 39	2,571	17.2%	270	18	288	40.1%	2,283	16.0%
40 - 49	1,471	9.8%	109	11	120	16.7%	1,351	9.5%
50 - 59	910	6.1%	44	16	60	8.4%	850	6.0%
60 & Over	440	2.9%	14	2	16	2.2%	424	3.0%
Not Reported	2	0.0%					2	0.0%
Residency Origin								
In State	13,602	90.7%	516	60	576	80.2%	13,026	91.3%
Out of State	1,106	7.4%	110	3	113	15.7%	993	7.0%
International	251	1.7%	21	2	23	3.2%	228	1.6%
Not Reported	30	0.2%	5	1	6	0.8%	24	0.2%
Degree Level								
Certificate	189	1.3%					189	1.3%
Associate	2,402	16.0%					2,402	16.8%
Bachelor	6,797	45.3%					6,797	47.6%
Master's	573	3.8%	573		573	79.8%		
Doctorate	37	0.2%	37		37	5.2%		
Graduate Certificate	42	0.3%	42		42	5.8%		
Post Baccalaureate Certificate	22	0.1%					22	0.2%
Non-Degree/Other UA Prog	4,927	32.9%		66	66	9.2%	4,861	34.1%
Attempted Credit Hours								
0 - 2.9	2,156	14.4%	100	32	132	18.4%	2,024	14.2%
3 - 5.9	2,697	18.0%	168	28	196	27.3%	2,501	17.5%
6 - 8.9	2,500	16.7%	229	5	234	32.6%	2,266	15.9%
9 - 11.9	2,068	13.8%	110	1	111	15.5%	1,957	13.7%
12 - 14.9	3,688	24.6%	38		38	5.3%	3,650	25.6%
15 & Over	1,880	12.5%	7		7	1.0%	1,873	13.1%

Source: UA Data Strategy and Institutional Research (DSIR) Decision Support Database (DSD) data system at semester closing.

Notes:

1. UAA Total includes Anchorage, Kenai, Kodiak, Matanuska-Susitna, and Prince William Sound College. Headcount is unduplicated and includes only credit students. Students who enrolled in multiple campuses have been counted only once in UAA Total.
2. Included are students enrolled in credit courses at the 050 level and above, including auditors.
3. Percentages may not add to 100% due to rounding.
4. See Definition of Terms for meaning of First-time Freshman.
5. Non-Degree/Other UA Programs = Non-Degree seeking students or other University of Alaska program degree seekers.
6. New transfer code added to Admission Type was not captured in freeze data resulting in an under count of Transfer and an over count of Continue starting in fall 2018.

Headcount by Student Characteristics

UAA Total - Fall Semester Trends

Table 1.03

	2015	2016	2017	2018	2019	Percent Change	
						2015-19	2018-19
UAA Total	18,116	17,962	17,267	16,530	14,989	-17.3%	-9.3%
Anchorage Campus	14,357	14,308	13,702	13,158	11,879	-17.3%	-9.7%
Kenai Peninsula College	2,485	2,596	2,596	2,476	2,142	-13.8%	-13.5%
Kodiak College	804	767	762	721	641	-20.3%	-11.1%
Matanuska-Susitna College	1,899	1,775	1,682	1,559	1,409	-25.8%	-9.6%
Prince William Sound College	779	743	860	895	821	5.4%	-8.3%
Admission Type							
New	2,805	2,616	2,760	2,353	2,010	-28.3%	-14.6%
Continue	10,580	10,320	9,863	10,217	9,213	-12.9%	-9.8%
Returned	3,893	4,293	3,932	3,919	3,720	-4.4%	-5.1%
Transfer	838	733	712	41	46	-94.5%	12.2%
Class Standing							
First-time Freshman	1,982	1,900	1,930	1,672	1,376	-30.6%	-17.7%
Freshman	2,275	2,186	1,958	1,849	1,798	-21.0%	-2.8%
Sophomore	2,480	2,422	2,320	2,172	1,921	-22.5%	-11.6%
Junior	2,228	2,030	2,000	1,841	1,619	-27.3%	-12.1%
Senior	3,589	3,473	3,238	3,105	2,696	-24.9%	-13.2%
Graduate	872	772	764	762	652	-25.2%	-14.4%
Licensure		1					
Non-Degree/Other UA Prog	4,690	5,178	5,057	5,129	4,927	5.1%	-3.9%
Full-time							
Graduate	245	200	190	199	156	-36.3%	-21.6%
Undergraduate	7,324	7,078	6,966	6,452	5,523	-24.6%	-14.4%
Total	7,569	7,278	7,156	6,651	5,679	-25.0%	-14.6%
Part-time							
Graduate	678	641	650	626	562	-17.1%	-10.2%
Undergraduate	9,869	10,043	9,461	9,253	8,748	-11.4%	-5.5%
Total	10,547	10,684	10,111	9,879	9,310	-11.7%	-5.8%
Gender							
Female	10,607	10,558	9,992	9,783	8,959	-15.5%	-8.4%
Male	7,509	7,331	7,082	6,562	5,840	-22.2%	-11.0%
Not Reported		73	193	185	190		2.7%
Race/Ethnicity							
African American	582	590	480	469	391	-32.8%	-16.6%
Alaska Native	924	846	816	773	687	-25.6%	-11.1%
Alaska Native Multirace	879	896	888	848	764	-13.1%	-9.9%
American Indian	109	113	121	111	85	-22.0%	-23.4%
Asian	1,254	1,216	1,232	1,011	866	-30.9%	-14.3%
Hispanic	1,145	1,193	1,164	1,079	979	-14.5%	-9.3%
Hispanic Multirace	79	88	87	110	85	7.6%	-22.7%
Native Hawaiian/Pacific Island	138	116	136	265	359	160.1%	35.5%
White	10,512	10,489	9,952	9,208	8,159	-22.4%	-11.4%
Non Hispanic Multirace	951	943	959	890	801	-15.8%	-10.0%
Non Resident Alien	292	312	329	295	251	-14.0%	-14.9%
Not Reported	1,251	1,160	1,103	1,471	1,562	24.9%	6.2%

Headcount by Student Characteristics UAA Total - Fall Semester Trends

Table 1.03

	2015	2016	2017	2018	2019	Percent Change	
						2015-19	2018-19
Age							
0 - 17	732	993	1,198	1,253	1,189	62.4%	-5.1%
18 - 18	1,425	1,334	1,350	1,236	1,132	-20.6%	-8.4%
19 - 19	1,476	1,425	1,342	1,268	1,099	-25.5%	-13.3%
20 - 24	5,680	5,397	5,034	4,609	4,046	-28.8%	-12.2%
25 - 29	3,015	2,823	2,719	2,482	2,129	-29.4%	-14.2%
30 - 39	2,979	3,013	2,846	2,819	2,571	-13.7%	-8.8%
40 - 49	1,444	1,502	1,469	1,493	1,471	1.9%	-1.5%
50 - 59	944	1,037	881	943	910	-3.6%	-3.5%
60 & Over	419	434	428	427	440	5.0%	3.0%
Not Reported	2	4			2	0.0%	
Residency Origin							
In State	16,425	16,348	15,604	15,002	13,602	-17.2%	-9.3%
Out of State	1,357	1,267	1,280	1,192	1,106	-18.5%	-7.2%
International	292	313	329	295	251	-14.0%	-14.9%
Not Reported	42	34	54	41	30	-28.6%	-26.8%
Degree Level							
Certificate	220	201	170	199	189	-14.1%	-5.0%
Associate	3,773	3,474	3,197	2,742	2,402	-36.3%	-12.4%
Bachelor	8,531	8,295	8,045	7,659	6,797	-20.3%	-11.3%
Master's	729	653	631	663	573	-21.4%	-13.6%
Doctorate	37	37	30	41	37	0.0%	-9.8%
Graduate Certificate	106	82	103	58	42	-60.4%	-27.6%
Post Baccalaureate Certificate	30	41	34	39	22	-26.7%	-43.6%
Teaching Licensure		1					
Non-Degree/Other UA Prog	4,690	5,178	5,057	5,129	4,927	5.1%	-3.9%
Attempted Credit Hours							
0 - 2.9	1,837	1,945	2,038	2,052	2,156	17.4%	5.1%
3 - 5.9	3,177	3,412	3,063	2,956	2,697	-15.1%	-8.8%
6 - 8.9	3,135	3,026	2,776	2,701	2,500	-20.3%	-7.4%
9 - 11.9	2,554	2,430	2,362	2,284	2,068	-19.0%	-9.5%
12 - 14.9	4,820	4,543	4,417	4,249	3,688	-23.5%	-13.2%
15 & Over	2,593	2,606	2,611	2,288	1,880	-27.5%	-17.8%

Source: UA Data Strategy and Institutional Research (DSIR) Decision Support Database (DSD) data system at semester closing.

Notes:

1. UAA Total includes Anchorage, Kenai, Kodiak, Matanuska-Susitna, and Prince William Sound College. Headcount is unduplicated and includes only credit students. Students who enrolled in multiple campuses have been counted only once in UAA Total.
2. Included are students enrolled in credit courses at the 050 level and above, including auditors.
3. See Definition of Terms for meaning of First-time Freshman.
4. Non-Degree/Other UA Programs = Non-Degree seeking students or other University of Alaska program degree seekers.
5. Changes in race definition resulted in a shift from Asian to the Native Hawaiian/Pacific Island group in fall 2018.
6. New transfer code added to Admission Type was not captured in freeze data resulting in an under count of Transfer and an over count of Continue starting in fall 2018.

First-Time Freshman by Student Characteristics UAA - Fall Closing 2015-2019

Table 1.04

	2015	2016	2017	2018	2019	Percent Change	
						2015-19	2018-19
First-Time Freshman Total	1,982	1,900	1,930	1,672	1,376	-30.6%	-17.7%
Degree Level							
Certificate	33	21	23	28	17	-48.5%	-39.3%
Associate	688	633	654	465	331	-51.9%	-28.8%
Bachelor	1,250	1,225	1,223	1,141	993	-20.6%	-13.0%
Occupational Endorsement	11	21	30	38	35	218.2%	-7.9%
Course Load							
Full-time	1,395	1,364	1,382	1,201	1,027	-26.4%	-14.5%
Part-time	587	536	548	471	349	-40.5%	-25.9%
Attempted Credit Hours							
0 - 2.9	2		5	3	1	-50.0%	-66.7%
3 - 5.9	89	63	79	57	39	-56.2%	-31.6%
6 - 8.9	201	204	205	193	139	-30.8%	-28.0%
9 - 11.9	295	269	259	218	170	-42.4%	-22.0%
12 - 14.9	1,045	941	952	873	775	-25.8%	-11.2%
15 & Over	350	423	430	328	252	-28.0%	-23.2%
Gender							
Female	1,077	1,056	1,052	916	753	-30.1%	-17.8%
Male	905	837	864	746	619	-31.6%	-17.0%
Not Reported		7	14	10	4		-60.0%
Age							
0 - 17	51	62	56	56	43	-15.7%	-23.2%
18 - 18	1,139	1,041	1,092	989	865	-24.1%	-12.5%
19 - 19	378	355	346	286	235	-37.8%	-17.8%
20 - 24	253	246	256	197	152	-39.9%	-22.8%
25 - 29	85	101	95	70	35	-58.8%	-50.0%
30 - 39	48	69	63	50	35	-27.1%	-30.0%
40 - 49	20	19	18	17	5	-75.0%	-70.6%
50 - 59	8	6	4	6	6	-25.0%	0.0%
60 & Over		1		1			-100.0%
Race/Ethnicity							
African American	68	65	57	57	35	-48.5%	-38.6%
Alaska Native	148	134	125	127	92	-37.8%	-27.6%
Alaska Native Multirace	138	141	150	167	109	-21.0%	-34.7%
American Indian	8	17	6	5	5	-37.5%	0.0%
Asian	211	187	207	121	115	-45.5%	-5.0%
Hispanic	125	143	156	130	109	-12.8%	-16.2%
Hispanic Multirace	10	14	12	23	9	-10.0%	-60.9%
Native Hawaiian/Pacific Island	24	19	29	92	93	287.5%	1.1%
White	981	912	931	714	628	-36.0%	-12.0%
Non Hispanic Multirace	147	140	149	134	101	-31.3%	-24.6%
Non Resident Alien	29	43	59	30	23	-20.7%	-23.3%
Not Reported	93	85	49	72	57	-38.7%	-20.8%

First-Time Freshman by Student Characteristics UAA - Fall Closing 2015-2019

Table 1.04

	2015	2016	2017	2018	2019	Percent Change	
						2015-19	2018-19
High School Percentile							
Top 10	211	85	192	163	112	-46.9%	-31.3%
75 - 89th	317	140	284	234	211	-33.4%	-9.8%
50 - 74th	461	197	387	376	283	-38.6%	-24.7%
25 - 49th	374	167	297	293	195	-47.9%	-33.4%
Bottom 25	215	110	211	167	130	-39.5%	-22.2%
Unknown	404	1,201	559	439	445	10.1%	1.4%
High School GPA							
4.0 +	37	54	50	64	37	0.0%	-42.2%
3.5 - 3.9	491	461	434	376	339	-31.0%	-9.8%
3.0 - 3.4	564	492	480	450	366	-35.1%	-18.7%
2.5 - 2.9	535	536	426	362	246	-54.0%	-32.0%
2.0 - 2.4	256	230	210	172	117	-54.3%	-32.0%
1.5 - 1.9	57	62	62	33	27	-52.6%	-18.2%
1.4 & Less	4	4	6	5	1	-75.0%	-80.0%
Unknown	38	61	262	210	243	539.5%	15.7%
Residency Origin							
In State	1,858	1,775	1,778	1,565	1,284	-30.9%	-18.0%
Out of State	95	80	87	76	68	-28.4%	-10.5%
International	29	44	59	30	23	-20.7%	-23.3%
Not Reported		1	6	1	1		0.0%

First-Time Freshman by Student Characteristics

UAA - Fall Closing 2015-2019

Table 1.04

	2015	2016	2017	2018	2019	Percent Change	
						2015-19	2018-19
High School Region							
Alaska Anchorage High Schools							
Alaska Adult Learning Center	2	6	6	2	4	100.0%	100.0%
Alaska Middle College School				3	17		466.7%
Alaska Military Youth Academy	3		2	2	2	-33.3%	0.0%
Anchorage Christian Academy				1			-100.0%
Anchorage Christian Schools	7	12	6	8	12	71.4%	50.0%
Avail School	4	9	3	6	1	-75.0%	-83.3%
Bartlett High School	100	98	81	63	57	-43.0%	-9.5%
Benny Benson Secondary School	10	9	12	10	5	-50.0%	-50.0%
Birchwood Christian School	2	5	1	1	2	0.0%	100.0%
Chugach Extension Corresp School		1	1	2	4		100.0%
Chugiak High School	77	66	81	41	47	-39.0%	14.6%
Crossroads High School	1		1			-100.0%	
Dimond High School	115	113	117	112	86	-25.2%	-23.2%
Eagle River Christian High School	3	1	2	2	1	-66.7%	-50.0%
Eagle River High School	61	52	48	54	41	-32.8%	-24.1%
East Anchorage High School	145	156	154	141	106	-26.9%	-24.8%
Family Partnership Charter	14	17	17	17	8	-42.9%	-52.9%
Focus Homeschool			2				
Frontier Charter School	12	8	7	10	1	-91.7%	-90.0%
Grace Christian School	16	9	9	9	6	-62.5%	-33.3%
Highland Tech Charter School	7	8	5	6	3	-57.1%	-50.0%
Holy Rosary Academy	1	3	1	3	2	100.0%	-33.3%
Lumen Christi High School	9	5	9	4	4	-55.6%	0.0%
Martin Luther King Career Center					12		
McLaughlin Secondary	1	2		1		-100.0%	-100.0%
McLaughlin Youth Center	2			1	2	0.0%	100.0%
Paideia Cooperative School			1	2	3		50.0%
Polaris K-12 School	11	12	6	9	4	-63.6%	-55.6%
SAVE High School	8	11	9	10		-100.0%	-100.0%
Save I Program	1	1	1	1		-100.0%	-100.0%
Service High School	123	124	121	112	89	-27.6%	-20.5%
South Anchorage High School	95	92	104	71	89	-6.3%	25.4%
Steller Secondary Alternative	17	8	17	9	7	-58.8%	-22.2%
Univ of AK Anchorage-High School		1					
West High School Anchorage	98	96	117	106	74	-24.5%	-30.2%
Whaley High School					1		
World Harvest Christian School		1	1				

First-Time Freshman by Student Characteristics UAA - Fall Closing 2015-2019

Table 1.04

	2015	2016	2017	2018	2019	Percent Change	
						2015-19	2018-19
High School Region (continued)							
Alaska Gulf Coast High Schools	178	178	169	131	89	-50.0%	-32.1%
Alaska Interior High Schools	83	91	74	76	59	-28.9%	-22.4%
Alaska Mat-Su High Schools	285	269	275	274	235	-17.5%	-14.2%
Alaska Northern High Schools	49	40	31	34	29	-40.8%	-14.7%
Alaska Other High Schools	9	6	8	13	16	77.8%	23.1%
Alaska Southeast High Schools	64	41	60	44	36	-43.8%	-18.2%
Alaska Southwest High Schools	67	49	40	54	35	-47.8%	-35.2%
American Military High School	5	5		1	4	-20.0%	300.0%
American Possessions	2	1		1	1	-50.0%	0.0%
East North Central States	19	9	12	12	10	-47.4%	-16.7%
East South Central States	12	7	9	2	4	-66.7%	100.0%
GED (Alaska)	64	63	59	48	44	-31.3%	-8.3%
GED (Outside Alaska)	18	17	17	19	6	-66.7%	-68.4%
Home School	8	11	4	3	11	37.5%	266.7%
International High Schools	16	21	13	4	5	-68.8%	25.0%
Mid-Atlantic States	11	10	8	7	4	-63.6%	-42.9%
Mountain States	29	30	28	18	21	-27.6%	16.7%
New England States	8	5	7	3	3	-62.5%	0.0%
No High School			1				
Pacific States	51	61	47	42	28	-45.1%	-33.3%
South Atlantic States	27	20	23	19	12	-55.6%	-36.8%
Unknown High School	4	9	72	30	23	475.0%	-23.3%
West North Central States	9	16	13	4	5	-44.4%	25.0%
West South Central States	19	15	18	14	6	-68.4%	-57.1%

Source: UA Data Strategy and Institutional Research (DSIR) Decision Support Database (DSD) data system at semester closing.

Notes:

1. First-time Freshman is a degree-seeking student who enrolls in an institution with no prior postsecondary experience. Includes students enrolled in academic or occupational programs. Also includes students enrolled in the fall term who attended college for the first time in the prior summer term, or students who entered with advanced standing (college credits earned before graduation from high school).
2. Changes in race definition resulted in a shift from Asian to the Native Hawaiian/Pacific Island group in fall 2018.

Headcount Trends by Major, Degree Type, and Campus/College Fall Closing 2015-2019

Table 1.05

	2015	2016	2017	2018	2019
Anchorage Campus					
College of Arts & Sciences					
Anthropology					
Bachelor of Arts	79	88	62	57	49
Bachelor of Science	19	20	25	19	19
Master of Arts	30	26	28	23	19
Total	128	134	115	99	87
Applied Ethics					
One Year Certificate	2	1			
Applied Geological Sciences					
Master of Science				15	20
Art					
Bachelor of Arts	136	129	127	132	114
Bachelor of Fine Arts	7	12	14	11	6
Total	143	141	141	143	120
Biological Sciences					
Bachelor of Arts	69	60	39	29	26
Bachelor of Science	398	402	405	361	320
Master of Science	28	24	26	26	35
Total	495	486	470	416	381
Chemistry					
Bachelor of Science	38	19	18	46	55
Children's Mental Health					
Graduate Certificate	1	1	1		
Clinical Psychology					
Master of Science	19	20	16	19	19
Clinical-Community Psychology					
Ph.D.	31	28	23	30	29
Creative Writing & Literary Arts					
Master of Fine Arts	45	43	46	39	35
Dual Language					
Bachelor of Arts	19	14	9	4	
English					
Bachelor of Arts	178	178	163	163	142
Master of Arts	12	15	12	13	8
Total	190	193	175	176	150
Environment & Society					
Bachelor of Arts	20	9	1		
Bachelor of Science	57	59	71	66	65
Total	77	68	72	66	65

Headcount Trends by Major, Degree Type, and Campus/College Fall Closing 2015-2019

Table 1.05

	2015	2016	2017	2018	2019
General Program					
Associate of Arts	455	385	317	251	196
Geological Science					
Bachelor of Science	85	88	77	70	49
History					
Bachelor of Arts	138	135	123	120	109
Interdisciplinary Studies					
Bachelor of Arts	1			1	2
Bachelor of Science	1		1	1	
Master of Science	10	14	14	12	11
Total	12	14	15	14	13
International Studies					
Bachelor of Arts	69	76	85	64	48
Journalism & Public Communications					
Bachelor of Arts	119	118	119	100	81
Languages					
Bachelor of Arts	99	69	73	61	77
Liberal Studies					
Bachelor of Liberal Studies	7	6	2		
Mathematics					
Bachelor of Arts	16	13	11	7	10
Bachelor of Science	68	60	58	57	37
Total	84	73	69	64	47
Music					
Bachelor of Arts	24	25	27	14	15
Bachelor of Music		16	30	33	35
Total	24	41	57	47	50
Music Education					
Bachelor of Music	44	35	25	18	8
Music Performance					
Bachelor of Music	21	13	3	1	
Natural Sciences					
Bachelor of Science	215	240	240	217	203
Philosophy					
Bachelor of Arts	31	24	20	25	15
Political Science					
Bachelor of Arts	65	59	64	73	65
Pre-Major Fine Arts					
Bachelor of Fine Arts	57	48	43	49	50

Headcount Trends by Major, Degree Type, and Campus/College Fall Closing 2015-2019

Table 1.05

	2015	2016	2017	2018	2019
Anchorage Campus - College of Arts & Sciences (continued)					
Pre-Major Music Education					
Bachelor of Music	1				
Pre-Major Music Performance					
Bachelor of Music	1				
Psychology					
Bachelor of Arts	338	278	242	233	226
Bachelor of Science	105	125	149	156	163
Total	443	403	391	389	389
Sociology					
Bachelor of Arts	43	42	36	30	31
Bachelor of Science	8	5	10	12	7
Total	51	47	46	42	38
Theatre					
Bachelor of Arts	49	41	40	49	43
School of Education (SOE)					
SOE: Counselor Education					
Graduate Certificate	3		1		
Master of Education	37	18	6		
Total	40	18	7		
SOE: Early Childhood					
Post-Bachelor Certificate	5	6	1	4	
SOE: Early Childhood Development					
Associate of Applied Science	40	40	41	31	41
One Year Certificate	3	1			
Total	43	41	41	31	41
SOE: Early Childhood Education					
Bachelor of Arts	193	161	146	117	2
SOE: Early Childhood Special Education					
Master of Education	8	9	9	13	5
SOE: Education					
Master of Arts in Teaching	20	28	31	36	
SOE: Educational Leadership					
Master of Education	37	34	36	30	23
SOE: Elementary Education					
Bachelor of Arts	234	269	284	267	1
SOE: Elementary Education (K-6)					
Post-Bachelor Certificate	10	10	12	16	
SOE: Language Education					
Graduate Certificate	29	29	40	3	6

Headcount Trends by Major, Degree Type, and Campus/College Fall Closing 2015-2019

Table 1.05

	2015	2016	2017	2018	2019
SOE: Principal					
Graduate Certificate	29	19	31	28	24
SOE: Reading Specialist					
Educational Endorsement	2				
SOE: Special Education					
Graduate Certificate	21	21	21	21	8
Master of Education	12	7	6	5	5
Total	33	28	27	26	13
SOE: Speech Language Pathology					
Post-Bachelor Certificate	12	21	11	12	18
SOE: Superintendent					
Educational Endorsement	1				
Graduate Certificate	3	1			
Total	4	1			
SOE: Teaching Credential-Special Education					
Licensure Program		1			
SOE: Teaching and Learning					
Master of Education	28	24	29	35	19
School of Education Total	728	699	705	618	152
College of Arts & Sciences Total	3,985	3,762	3,600	3,325	2,594
College of Business & Public Policy					
Accounting					
Associate of Applied Science	85	93	88	82	85
Bachelor of Business Administration	362	333	326	291	289
Total	447	426	414	373	374
Business Computer Information Systems					
Associate of Applied Science	17	15	18	13	13
Economics					
Bachelor of Arts	43	57	54	49	39
Bachelor of Business Administration	41	49	54	47	38
Total	84	106	108	96	77
Finance					
Bachelor of Business Administration	131	119	118	107	87
General Business					
Associate of Applied Science					34
General Management					
Master of Business Administration	77	70	72	74	82

Headcount Trends by Major, Degree Type, and Campus/College Fall Closing 2015-2019

Table 1.05

	2015	2016	2017	2018	2019
Anchorage Campus - College of Business & Public Policy (continued)					
Global Logistics Supply Chain Management					
Bachelor of Business Administration	74	69	53	60	47
Global Supply Chain Management					
Master of Science	21	10	1	13	17
Logistics & Supply Chain Operations					
Associate of Applied Science	24	21	15	10	15
One Year Certificate	6	4	2	2	3
Occupational Endorsement Certificate		5			1
Total	30	30	17	12	19
Management					
Bachelor of Business Administration	430	420	446	414	378
Management Information Systems					
Bachelor of Business Administration	57	63	47	50	41
Marketing					
Bachelor of Business Administration	100	118	114	92	106
Pre-Global Logistics Supply Chain Management					
Bachelor of Business Administration			1	4	2
Pre-Major Accounting					
Bachelor of Business Administration	6	5	1	1	1
Pre-Major Finance					
Bachelor of Business Administration	2	1	3	1	1
Pre-Major Management					
Bachelor of Business Administration	9	8	9	2	2
Pre-Major Management Information System					
Bachelor of Business Administration		1	1	1	
Pre-Major Marketing					
Bachelor of Business Administration	1	2	1	2	3
Pre-Major Global Logistics Management					
Bachelor of Business Administration		1			
Pre-Major Economics					
Bachelor of Business Administration			1	2	1
Public Administration					
Master of Public Administration	36	33	32	36	24
Retail Management					
One Year Certificate	8	4			
Small Business Administration					
Associate of Applied Science	85	87	81	74	43
College of Business & Public Policy Total	1,615	1,588	1,538	1,427	1,352

Headcount Trends by Major, Degree Type, and Campus/College Fall Closing 2015-2019

Table 1.05

	2015	2016	2017	2018	2019
College of Engineering					
Applied Environmental Science & Technology					
Masters - Other	5	2			
Master of Science	6	3	2		
Total	11	5	2		
Arctic Engineering					
Master of Science	7	4	2	2	1
Civil Engineering					
Bachelor of Science	94	220	219	222	206
Masters of Civil Engineering	8	7	3		
Master of Science	19	30	36	33	23
Total	121	257	258	255	229
Computer Science					
Bachelor of Arts	55	48	47	39	31
Bachelor of Science	174	171	205	213	201
Total	229	219	252	252	232
Computer Systems Engineering					
Bachelor of Science	12	50	69	52	63
Electrical Engineering					
Bachelor of Science	15	95	124	118	123
Engineering					
Bachelor of Science	161	191	71	32	9
Engineering Management					
Master of Science	12	10	7	4	
Environmental Regulation & Permitting					
Graduate Certificate	5	2			
Geographic Information Systems					
One Year Certificate	5	1			
Geomatics					
Associate of Applied Science	9	10	14	12	6
Bachelor of Science	69	77	69	61	47
Total	78	87	83	73	53
Mechanical Engineering					
Bachelor of Science	50	270	327	299	268
Master of Science	4	5	7	10	8
Total	54	275	334	309	276
Pre-Major Civil Engineering					
Bachelor of Science	127				
Pre-Major Computer Systems Engineering					
Bachelor of Science	14				

Headcount Trends by Major, Degree Type, and Campus/College Fall Closing 2015-2019

Table 1.05

	2015	2016	2017	2018	2019
Anchorage Campus - College of Engineering (continued)					
Pre-Major Electrical Engineer					
Bachelor of Science	31				
Pre-Major Mechanical Engineer					
Bachelor of Science	62				
Pre-Major Engineering					
Bachelor of Science	273				
Project Management					
Master of Science	73	61	46	31	31
Science Management					
Master of Science		2	3		
College of Engineering Total	1,290	1,259	1,251	1,128	1,017
College of Health					
Children's Behavioral Health					
Occupational Endorsement Certificate	8	3	3	8	3
Children's Residential Service					
Occupational Endorsement Certificate	1				
Civic Engagement					
One Year Certificate		1			
Conflict Resolution					
Occupational Endorsement Certificate		4	2	2	
Dental Assisting					
Associate of Applied Science	7	5	11	4	3
One Year Certificate				1	4
Two Year Certificate	6	9	8	3	2
Total	13	14	19	8	9
Dental Hygiene					
Associate of Applied Science	21	15	12	4	
Bachelor of Science	10	4	8	6	29
Total	31	19	20	10	29
Diagnostic Medical Sonography					
Associate of Applied Science	7	5	13	13	7
Dietetic Internship					
Graduate Certificate	6	7	8	6	4
Dietetics					
Bachelor of Science	17	20	19	17	20
Dietetics & Nutrition					
Master of Science				8	14
Family Nurse Practitioner					
Graduate Certificate	1			1	

Headcount Trends by Major, Degree Type, and Campus/College Fall Closing 2015-2019

Table 1.05

	2015	2016	2017	2018	2019
Fire & Emergency Services Technology					
Associate of Applied Science	66	44	50	41	25
Health Sciences					
Bachelor of Science	23	50	74	61	97
Human Services					
Associate of Applied Science	117	105	84	64	56
Bachelor of Human Services	54	41	35	36	34
Total	171	146	119	100	90
Justice					
Bachelor of Arts	96	75	55	42	46
Legal Nurse Consultant Paralegal					
One Year Certificate		2			
Legal Studies					
Bachelor of Arts	14	24	27	30	45
Limited Radiography					
Occupational Endorsement Certificate	4	4	1		
Medical Assisting					
Associate of Applied Science	23	19	20	15	9
Medical Laboratory Science					
Bachelor of Science	104	120	118	87	76
Medical Laboratory Technology					
Associate of Applied Science	4	5	9	1	1
Medical Office Coding					
Occupational Endorsement Certificate	22	25	21	23	24
Medical Office Supply					
Occupational Endorsement Certificate	2				
Nursing					
Associate of Applied Science	185	174	165	192	174
Nursing Education					
Graduate Certificate			1		
Nursing Science					
Bachelor of Science	186	176	219	276	291
Doctorate Nursing Practitioner	6	9	7	11	8
Master of Science	43	34	35	49	44
Total	235	219	261	336	343
Nutrition					
Bachelor of Science	10	7	6		
Paralegal Studies					
Associate of Applied Science	5	7	6	7	7
Post-Bachelor Certificate	1	2	4	4	3
Total	6	9	10	11	10

Headcount Trends by Major, Degree Type, and Campus/College Fall Closing 2015-2019

Table 1.05

	2015	2016	2017	2018	2019
Anchorage Campus - College of Health (continued)					
Pharmacy Technology					
Occupational Endorsement Certificate	15	13	18	16	23
Phlebotomist					
Occupational Endorsement Certificate	3	6	2	6	7
Physical Education					
Bachelor of Science	120	104	101	102	76
Physical Therapist Assistant					
Associate of Applied Science	14	14	11	11	13
Pre-Major Dental Assisting					
Associate of Applied Science	10	8	4	6	6
One Year Certificate				2	1
Two Year Certificate	2	2	9	4	2
Total	12	10	13	12	9
Pre-Major Dental Hygiene					
Associate of Applied Science	58	56	53		
Bachelor of Science	50	69	70	122	101
Total	108	125	123	122	101
Pre-Major Diagnostic Medical Sonography					
Associate of Applied Science	15	13	26	30	53
Pre-Major Dietetics					
Bachelor of Science	63	51	53	59	57
Pre-Major Health Science					
Bachelor of Science	219	259	240	298	259
Pre-Major Human Services					
Bachelor of Human Services				1	
Pre-Major Justice					
Bachelor of Arts	122	130	104	117	79
Pre-Major Legal Studies					
Bachelor of Arts	42	27	30	25	22
Pre-Major Medical Assisting					
Associate of Applied Science	61	45	36	28	32
Pre-Major Medical Laboratory Science					
Bachelor of Science			3	9	3
Pre-Major Medical Laboratory Technology					
Associate of Applied Science	23	20	11	10	7
Pre-Major Nursing					
Associate of Applied Science	335	339	349	304	275
Pre-Major Nursing Science					
Bachelor of Science	756	759	698	663	657

Headcount Trends by Major, Degree Type, and Campus/College Fall Closing 2015-2019

Table 1.05

	2015	2016	2017	2018	2019
Pre-Major Paralegal Studies					
Associate of Applied Science	13	13	8	11	11
Two Year Certificate	1	1			
Post-Bachelor Certificate	2	2	6	3	1
Total	16	16	14	14	12
Pre-Major Physical Therapist Assisting					
Associate of Applied Science	39	52	56	66	45
Pre-Major Social Work					
Bachelor of Social Work	111	102	97	85	100
Pre-Major Legal Nurse Consulting Paralegal					
One Year Certificate	1		1		
Pre-Major Radiologic Technology					
Associate of Applied Science	111	102	94	92	74
Pre-Major Surgical Technology					
Associate of Applied Science			13	21	33
Psychiatric & Mental Health Nurse Practitioner					
Graduate Certificate	3	3			
Public Health Practice					
Master of Public Health	75	67	75	68	64
Radiologic Technology					
Associate of Applied Science	11	24	35	36	17
Social Work					
Bachelor of Social Work	35	33	32	29	24
Master of Social Work	54	53	51	69	66
Total	89	86	83	98	90
Social Work Management					
Graduate Certificate	2				
Surgical Technology					
Associate of Applied Science			11	11	
College of Health Total	3,415	3,363	3,318	3,316	3,134
Community & Technical College					
Advanced Welding					
Occupational Endorsement Certificate	1	5	2	3	
Air Traffic Control					
Associate of Applied Science	24	28	17	10	16
Applied Technologies Leadership					
Bachelor of Science		19	47	46	42
Apprenticeship Technology					
Associate of Applied Science	1				

Headcount Trends by Major, Degree Type, and Campus/College Fall Closing 2015-2019

Table 1.05

	2015	2016	2017	2018	2019
Anchorage Campus - Community & Technical College (continued)					
Architectural & Engineering Technology					
Associate of Applied Science	38	29	18	12	10
Architectural Drafting					
One Year Certificate	2				
Architectural Technology					
One Year Certificate		2	1		
Automotive Technology					
Associate of Applied Science	25	32	52	47	46
Two Year Certificate	10	7	3	10	9
Total	35	39	55	57	55
Automotive - Electrical					
Occupational Endorsement Certificate	1				
Aviation Administration					
Associate of Applied Science	42	23	19	20	5
Aviation Maintenance - Airframe					
Two Year Certificate	30	28	26	20	22
Aviation Maintenance - Powerplant					
Two Year Certificate	6	7	12	13	16
Aviation Maintenance Technology					
Associate of Applied Science	34	22	20	27	31
Aviation Technology					
Bachelor of Science	188	194	196	210	196
Brakes, Suspension, Alignment					
Occupational Endorsement Certificate	2	1			
CAD for Building Construction					
Occupational Endorsement Certificate	3	1			
Career & Technical Education					
Master of Science	3				
Cisco Certificate Network Associate					
Occupational Endorsement Certificate		1		1	3
Civil Drafting					
One Year Certificate	2				
Civil Technology					
One Year Certificate	1				
Computer & Networking Technology					
Associate of Applied Science	105	100	74	64	56
Two Year Certificate	8	4	1		
Total	113	104	75	64	56

Headcount Trends by Major, Degree Type, and Campus/College Fall Closing 2015-2019

Table 1.05

	2015	2016	2017	2018	2019
Computer Information Office Systems					
Associate of Applied Science	7	3	1		
Construction Management					
Associate of Applied Science	26	27	18	20	18
Bachelor of Science	121	111	100	87	82
Total	147	138	118	107	100
Culinary Arts					
Associate of Applied Science	74	65	68	54	43
Diesel Power Technology					
Associate of Applied Science		12	30	35	22
One Year Certificate		3	2	8	11
Total		15	32	43	33
Heavy Duty Transportation & Equipment					
Associate of Applied Science	20	15	5	2	
Two Year Certificate	12	2	2		
Total	32	17	7	2	
Hospitality Administration					
Bachelor of Arts				19	30
Hospitality Restaurant Management					
Bachelor of Arts	82	62	63	30	12
Mechanical & Electrical Technology					
One Year Certificate		1			
Mechanical & Electrical Drafting					
One Year Certificate	1				
Medical Technology					
Bachelor of Science	7	4	1	1	
Nondestructive Testing Technology					
Occupational Endorsement Certificate	3	3	1	1	3
Occupational Safety & Health					
Associate of Applied Science	85	52	46	37	32
Bachelor of Science			19	34	35
Total	85	52	65	71	67
Office Foundations					
Occupational Endorsement Certificate	1				
Office Support					
Occupational Endorsement Certificate	1				
Pre-Major Technology					
Bachelor of Science	42	21	4	1	1
Professional Piloting					
Associate of Applied Science	46	37	58	36	41

Headcount Trends by Major, Degree Type, and Campus/College Fall Closing 2015-2019

Table 1.05

	2015	2016	2017	2018	2019
Anchorage Campus - Community & Technical College (continued)					
Structural Drafting					
One Year Certificate	1				
Technology					
Bachelor of Science	45	37	10	3	1
Welding & Non-Destructive Testing Technology					
Associate of Applied Science	55	57	43	24	30
Welding					
Occupational Endorsement Certificate	2	4	6	12	6
Community & Technical College Total	1,157	1,019	965	887	819
Anchorage Campus Non-Degree					
Exploratory Major/Undeclared					
Bachelor of Arts	569	492	414	341	326
Non-Degree Seeking					
Non-Degree Seeking	2,572	2,711	2,657	2,732	2,557
Pending Degree Seeking	1				
Total	2,573	2,711	2,657	2,732	2,557
Pending Degree Seeking					
Graduate	18	17	21	18	13
Undergraduate	121	92	80	83	69
Total	139	109	101	101	82
Other					
Exchange Student	13	11	3	4	5
Inactivated Program	25	22	25	4	7
Total	38	33	28	8	12
Pre-Graduate					
Non-Degree Seeking		1	1	1	1
Anchorage Campus Non-Degree Total	3,319	3,346	3,201	3,183	2,978
Anchorage Campus Total	14,781	14,337	13,873	13,266	11,894

Headcount Trends by Major, Degree Type, and Campus/College Fall Closing 2015-2019

Table 1.05

	2015	2016	2017	2018	2019
Kenai Peninsula College					
Computer Electronics					
Associate of Applied Science	3	2			
Computer Information Office Systems					
Associate of Applied Science	2				
Corrections					
One Year Certificate	5		2	2	2
Occupational Endorsement Certificate	1	1			1
Total	6	1	2	2	3
Digital Art					
Associate of Applied Science	8	2	1		
General Business					
Associate of Applied Science	44	52	43	49	37
General Program					
Associate of Arts	153	163	141	143	114
Industrial Process Instrumentation					
Associate of Applied Science	55	48	38	20	18
Non-Degree Seeking					
Non-Degree Seeking	456	408	440	406	447
Occupational Safety & Health					
Associate of Applied Science	1	1	1		
Paramedical Technology					
Associate of Applied Science	13	6	5	9	14
Pending Degree Seeking					
Pending Degree Seeking	7	9	4	4	7
Petroleum Technology					
One Year Certificate	3	4	7	3	9
Two Year Certificate	1				
Total	4	4	7	3	9
Pre-Major Paramedical Technology					
Associate of Applied Science	15	25	23	22	8
Pre-Major Process Technology					
Associate of Applied Science	69	69	62	79	33
Process Technology					
Associate of Applied Science	158	89	71	46	78
Small Business Administration					
Associate of Applied Science	1				
Welding Technology					
One Year Certificate	12	18	13	15	8
Two Year Certificate	1				
Total	13	18	13	15	8
Kenai Peninsula College Total	1,008	897	851	798	776

Headcount Trends by Major, Degree Type, and Campus/College Fall Closing 2015-2019

Table 1.05

	2015	2016	2017	2018	2019
Kodiak College					
Accounting					
Associate of Applied Science	20	21	14	10	10
Alutiiq Language					
Occupational Endorsement Certificate		3	1	2	1
Computer Information Office Systems					
Associate of Applied Science	5	1			
General Business					
Associate of Applied Science	12	14	11	13	13
General Program					
Associate of Arts	102	118	101	70	69
Non-Degree Seeking					
Non-Degree Seeking	146	173	167	124	120
Office Support					
Occupational Endorsement Certificate	1		1		2
Pending Degree Seeking					
Pending Degree Seeking	11	11	6	7	1
Technology					
Associate of Applied Science	8	8	8	6	8
Welding					
One Year Certificate	2	1		1	1
Kodiak College Total	307	350	309	233	225
Matanuska-Susitna College					
Accounting					
Associate of Applied Science	38	34	25	32	36
Cisco Certificate Network Associate					
Occupational Endorsement Certificate				2	1
Commercial HVAC Systems					
Occupational Endorsement Certificate	1	1			
Commercial Refrigeration					
Occupational Endorsement Certificate	1	1			
Computer Information Office Systems					
Associate of Applied Science	13	8	4	1	
Computer Systems Technology					
Associate of Applied Science	11	27	36	30	26
General Business					
Associate of Applied Science	35	45	46	42	36
General Program					
Associate of Arts	372	344	275	213	149

Headcount Trends by Major, Degree Type, and Campus/College Fall Closing 2015-2019

Table 1.05

	2015	2016	2017	2018	2019
Human Services					
Associate of Applied Science	57	48	52	41	38
Non-Degree Seeking					
Non-Degree Seeking	238	265	280	402	386
Office Foundations					
Occupational Endorsement Certificate	1		8	3	2
Paramedical Technology					
Associate of Applied Science	12	7	16	14	14
Pending Degree Seeking					
Pending Degree Seeking	5		3	1	
Pre-Major Paramedical Technology					
Associate of Applied Science	24	33	24	16	15
Refrigeration & Heating Technology					
Associate of Applied Science	13	13	17	10	8
Two Year Certificate	3	5	2	5	2
Total	16	18	19	15	10
Residential Heat/Vent					
Occupational Endorsement Certificate					1
Small Business Administration					
Associate of Applied Science	16	15	15	13	3
Sustainable Energy					
Occupational Endorsement Certificate	4	1			
Veterinary Assisting					
Occupational Endorsement Certificate	4	8	10	23	13
Matanuska-Susitna College Total	848	855	813	848	730
Prince William Sound College					
Computer Information Office Systems					
Associate of Applied Science	3				
Direct Services Specialist					
Occupational Endorsement Certificate	3				
Disability Services					
Associate of Applied Science	19	7	4	1	
General Program					
Associate of Arts	48	38	29	26	32
Industrial Technology					
Associate of Applied Science	12	8	5		
Two Year Certificate	1				
Total	13	8	5		

Headcount Trends by Major, Degree Type, and Campus/College Fall Closing 2015-2019

Table 1.05

	2015	2016	2017	2018	2019
Prince William Sound College (continued)					
Millwright					
Occupational Endorsement Certificate		3	3	8	6
Non-Degree Seeking					
Non-Degree Seeking	531	462	550	545	523
Outdoor Leadership					
Associate of Applied Science	9	10	10	8	12
Prince William Sound Total	626	528	601	588	573
Other UA Programs					
UAF Programs	312	540	468	419	449
UAS Programs	234	455	352	378	342
UAA Total	18,116	17,962	17,267	16,530	14,989

Source: UA Data Strategy and Institutional Research (DSIR) Decision Support Database (DSD) data system at semester closing.

Notes:

1. Student distribution in this report is based on primary/home campus where students are officially admitted.
2. Headcount is unduplicated.
3. Students who enrolled in multiple campuses have been counted only once in UAA Total.

Closing Headcount Trend by Campus and Term

Table 1.06

	Anchorage Campus			Kenai Peninsula College			Kodiak College		
	Summer	Fall	Spring	Summer	Fall	Spring	Summer	Fall	Spring
2010 - 11	7,295	16,129	15,488	560	2,194	2,427	144	614	806
2011 - 12	7,273	16,205	5,537	807	2,784	2,702	217	755	940
2012 - 13	6,931	15,718	15,268	832	2,550	2,574	232	841	925
2013 - 14	6,682	15,640	14,573	747	2,523	2,613	263	796	968
2014 - 15	6,601	14,754	14,152	800	2,716	2,641	223	793	992
2015 - 16	6,286	14,357	13,576	876	2,485	2,336	250	804	804
2016 - 17	6,092	14,308	12,954	838	2,596	2,565	246	767	777
2017 - 18	6,097	13,702	12,518	898	2,596	2,400	242	762	738
2018 - 19	5,836	13,158	11,928	915	2,476	2,287	265	721	689
2019 - 20	5,550	11,879	11,062	745	2,142	1,883	208	641	596

	Matanuska-Susitna College			Prince William Sound College			Total UAA		
	Summer	Fall	Spring	Summer	Fall	Spring	Summer	Fall	Spring
2010 - 11	390	1,950	1,840	311	952	1,615	8,374	20,559	20,630
2011 - 12	441	2,134	1,944	518	957	1,731	8,642	20,699	20,879
2012 - 13	419	1,990	1,825	214	753	1,712	8,042	19,825	20,354
2013 - 14	473	1,914	1,822	175	834	1,328	7,711	19,629	19,205
2014 - 15	464	1,844	1,731	199	681	1,809	7,678	18,649	19,064
2015 - 16	506	1,899	1,726	92	779	1,628	7,330	18,116	17,911
2016 - 17	547	1,775	1,547	89	743	1,357	7,135	17,962	16,888
2017 - 17	453	1,682	1,571	98	860	1,453	7,070	17,267	16,362
2018 - 19	393	1,559	1,549	92	895	1,463	6,820	16,530	15,660
2019 - 20	310	1,409	1,354	143	821	472	6,391	14,989	13,463

Source: UA Data Strategy and Institutional Research (DSIR) Decision Support Database (DSD) data system at semester closing.

Notes:

1. Included are students enrolled in credit courses at the 050 level and above, including auditors.
2. Each campus reflects unduplicated student headcount.
3. Students who enrolled in multiple campuses have been counted only once in UAA total.

Undergraduate Applied, Accepted, and Enrolled Students at UAA

Table 1.07

	Fall 2015	Fall 2016	Fall 2017	Fall 2018	Fall 2019
College of Arts & Sciences					
Applied	2,055	1,874	1,717	1,721	1,610
Accepted	1,492	1,625	1,301	1,461	1,372
Enrolled	1,087	973	941	844	694
Selectivity	71.7%	86.7%	75.8%	84.9%	85.2%
Yield	72.9%	59.9%	72.3%	57.8%	50.6%
School of Education					
Applied	210	217	193	190	29
Accepted	158	188	149	157	21
Enrolled	117	105	103	84	12
Selectivity	75.2%	86.6%	77.2%	82.6%	72.4%
Yield	74.1%	55.9%	69.1%	53.5%	57.1%
College of Business & Public Policy					
Applied	641	618	541	554	528
Accepted	475	500	419	452	446
Enrolled	344	308	295	271	256
Selectivity	74.1%	80.9%	77.4%	81.6%	84.5%
Yield	72.4%	61.6%	70.4%	60.0%	57.4%
College of Engineering					
Applied	597	546	565	543	504
Accepted	448	460	422	456	443
Enrolled	325	280	316	291	231
Selectivity	75.0%	84.2%	74.7%	84.0%	87.9%
Yield	72.5%	60.9%	74.9%	63.8%	52.1%
College of Health					
Applied	1,700	1,677	1,578	1,646	1,586
Accepted	1,274	1,429	1,207	1,377	1,337
Enrolled	833	849	821	808	708
Selectivity	74.9%	85.2%	76.5%	83.7%	84.3%
Yield	65.4%	59.4%	68.0%	58.7%	53.0%
Community & Technical College					
Applied	635	545	478	477	485
Accepted	461	429	377	394	408
Enrolled	318	261	254	226	208
Selectivity	72.6%	78.7%	78.9%	82.6%	84.1%
Yield	69.0%	60.8%	67.4%	57.4%	51.0%
Anchorage Campus Total					
Applied	5,838	5,477	5,072	5,131	4,742
Accepted	4,308	4,631	3,875	4,297	4,027
Enrolled	3,024	2,776	2,730	2,524	2,109
Selectivity	73.8%	84.6%	76.4%	83.7%	84.9%
Yield	70.2%	59.9%	70.5%	58.7%	52.4%

Undergraduate Applied, Accepted, and Enrolled Students at UAA

Table 1.07

	Fall 2015	Fall 2016	Fall 2017	Fall 2018	Fall 2019
Kenai Peninsula College					
Applied	237	211	239	243	238
Accepted	224	199	198	212	151
Enrolled	168	162	139	157	100
Selectivity	94.5%	94.3%	82.8%	87.2%	63.4%
Yield	75.0%	81.4%	70.2%	74.1%	66.2%
Kodiak College					
Applied	103	105	86	76	72
Accepted	78	75	54	36	15
Enrolled	73	64	42	28	10
Selectivity	75.7%	71.4%	62.8%	47.4%	20.8%
Yield	93.6%	85.3%	77.8%	77.8%	66.7%
Matanuska-Susitna College					
Applied	369	340	289	287	197
Accepted	277	289	232	244	167
Enrolled	221	228	183	169	117
Selectivity	75.1%	85.0%	80.3%	85.0%	84.8%
Yield	79.8%	78.9%	78.9%	69.3%	70.1%
Prince William Sound College					
Applied	72	37	35	35	48
Accepted	63	37	19	27	32
Enrolled	31	26	13	19	21
Selectivity	87.5%	100.0%	54.3%	77.1%	66.7%
Yield	49.2%	70.3%	68.4%	70.4%	65.6%
UAA Total					
Applied	6,619	6,170	5,721	5,772	5,297
Accepted	4,950	5,231	4,378	4,816	4,392
Enrolled	3,517	3,256	3,107	2,897	2,357
Selectivity	74.8%	84.8%	76.5%	83.4%	82.9%
Yield	71.1%	62.2%	71.0%	60.2%	53.7%

Source: UA Data Strategy and Institutional Research (DSIR) Decision Support Database (DSD) data system at semester closing.

Notes:

1. Included are applicants to Associate and Baccalaureate degree programs only.
2. An applicant may be counted more than once in the report due to application submissions to multiple programs in a given fall semester.
3. Selectivity = Accepted/Applicants; it shows the percentage of total applications that were accepted into programs.
4. Yield = Enrolled/Accepted; it refers to the percentage of total accepted that enrolled in the same fall semester.

Graduate Applied, Accepted, and Enrolled Students at UAA

Table 1.08

	Fall 2015	Fall 2016	Fall 2017	Fall 2018	Fall 2019
College of Arts & Sciences					
Applied	141	127	100	114	102
Accepted	53	37	32	45	36
Enrolled	38	31	28	40	26
Selectivity	37.6%	29.1%	32.0%	39.5%	35.3%
Yield	71.7%	83.8%	87.5%	88.9%	72.2%
School of Education					
Applied	52	41	43	33	15
Accepted	31	22	25	16	8
Enrolled	29	18	21	14	8
Selectivity	59.6%	53.7%	58.1%	48.5%	53.3%
Yield	93.5%	81.8%	84.0%	87.5%	100.0%
College of Business & Public Policy					
Applied	95	70	91	88	70
Accepted	54	38	51	53	42
Enrolled	40	28	33	44	29
Selectivity	56.8%	54.3%	56.0%	60.2%	60.0%
Yield	74.1%	73.7%	64.7%	83.0%	69.0%
College of Engineering					
Applied	61	61	48	33	34
Accepted	33	46	33	23	26
Enrolled	17	32	22	20	17
Selectivity	54.1%	75.4%	68.8%	69.7%	76.5%
Yield	51.5%	69.6%	66.7%	87.0%	65.4%
College of Health					
Applied	77	76	51	69	60
Accepted	27	24	8	37	20
Enrolled	19	16	8	27	13
Selectivity	35.1%	31.6%	15.7%	53.6%	33.3%
Yield	70.4%	66.7%	100.0%	73.0%	65.0%
UAA Total					
Applied	426	375	333	337	281
Accepted	198	167	149	174	132
Enrolled	143	125	112	145	93
Selectivity	46.5%	44.5%	44.7%	51.6%	47.0%
Yield	72.2%	74.9%	75.2%	83.3%	70.5%

Source: UA Data Strategy and Institutional Research (DSIR) Decision Support Database (DSD) data system at semester closing.

Notes:

1. Included are applicants to Master's and PhD degree programs only.
2. An applicant may be counted more than once in the report due to application submissions to multiple programs in a given fall semester.
3. Selectivity = Accepted/Applicants; it shows the percentage of total applications that were accepted into programs.
4. Yield = Enrolled/Accepted; it refers to the percentage of total accepted that enrolled in the same fall semester.

Enrollment

Student Credit Hours by Discipline within Campus/College Fall Semesters 2015-2019

Table 2.01

	2015	2016	2017	2018	2019
Anchorage Campus					
College of Arts & Sciences					
Alaska Native Studies	373	552	591	628	845
American Sign Language	620	516	576	604	516
Anthropology	2,143	2,138	1,854	1,299	1,429
Art	2,490	2,236	2,431	2,301	1,859
Astronomy	471	474	451	467	320
Biology	7,569	7,288	7,375	6,710	5,656
Chemistry	3,547	3,531	3,336	3,034	2,411
Chinese	200	180	152	100	87
Creative Writing & Literary Arts	195	188	160	140	137
Dance	555	483	473	301	265
English	6,834	6,751	1,609	1,522	1,199
Environmental Studies	296	365	405	397	330
French	534	468	398	386	298
Geography	429	381	342	324	321
Geology	1,765	1,710	1,811	1,703	1,388
German	441	442	360	382	307
History	2,781	3,000	3,058	2,508	2,261
Interdisciplinary Studies	132	132	96	192	108
International Studies	63	60	36	48	12
Japanese	698	516	588	494	457
Journalism & Public Communications	784	694	676	757	672
Linguistics	207	189	174	135	198
Mathematics	3,270	2,754	2,750	2,600	2,281
Microbiology			33	27	33
Music	2,619	2,255	2,274	2,140	1,491
National Student Exchange	217	172	138	40	116
Philosophy	2,160	2,145	1,914	1,869	1,569
Physics	2,337	1,774	1,747	1,551	1,244
Political Science	873	873	891	1,032	693
Psychology	5,899	5,518	5,121	5,138	4,954
Russian	180	196	212	112	100
Sociology	1,288	1,179	1,350	1,263	1,122
Spanish	1,216	1,199	1,102	943	730
Statistics	528	442	467	503	377
Theater	636	783	784	878	485
Women's Studies	201	120	141	165	129

Student Credit Hours by Discipline within Campus/College Fall Semesters 2015-2019

Table 2.01

	2015	2016	2017	2018	2019
Anchorage Campus - College of Arts & Sciences (continued)					
School of Education (SOE)					
SOE: Counselor Education	252	78	28		
SOE: Early Childhood	997	930	864	658	147
SOE: Early Childhood Development	59	91		37	69
SOE: Development & Leadership	780	651	495	820	883
SOE: Education	1,072	2,059	2,171	2,270	3,295
SOE: Educational Technology	3				
SOE: Elementary Education	434	468	606	637	
SOE: Engaged Leadership		27			
SOE: Foundations	752	698	786	607	42
SOE: Physical Education	40	47	51	110	45
SOE: Research	108	75	75	78	15
SOE: Secondary Education	168	231	189	225	
SOE: Special Education	754	637	648	658	338
SOE: Speech Language Pathology	252	273	222	268	230
SOE: Teaching and Learning	69	54	76	95	49
School of Education Total	5,740	6,319	6,211	6,463	5,113
College of Arts & Sciences Total	60,291	58,023	52,087	49,156	41,513
College of Business & Public Policy					
Accounting	2,796	2,430	2,385	2,208	2,019
Business Administration	5,245	5,597	5,842	5,969	5,648
Computer Information Systems	2,226	1,965	1,887	1,539	1,356
Economics	2,449	2,079	1,998	1,995	1,788
Logistics	285	156	99	192	210
Logistics Operations	264	258	153	141	216
Public Administration	222	198	162	237	132
College of Business & Public Policy Total	13,487	12,683	12,526	12,281	11,369
College of Engineering					
Applied Environmental Science & Technology	85	17	1		
Arctic Engineering	177	186	174	171	
Civil Engineering	627	845	883	911	779
Computer Science & Computer Engineering	1,117	1,252	1,503	1,488	1,511
Computer Science	222	201	177	42	
Computer Systems Engineering	99	63	78	66	39
Electrical Engineering	776	744	786	662	606
Engineering	550	509	544	424	241
Engineering & Science Management	303	294	234	132	159
Engineering Science	1,233	1,240	1,362	1,069	1,010
Geographic Information Systems	228	276	318	240	183
Geomatics	386	524	427	484	352

Student Credit Hours by Discipline within Campus/College Fall Semesters 2015-2019

Table 2.01

	2015	2016	2017	2018	2019
Mechanical Engineering	917	982	1,164	1,264	921
Project Management	411	336	240	171	213
College of Engineering Total	7,131	7,469	7,891	7,124	6,014
College of Health					
Biomedical Program - WWAMI	36	39	5	5	4
COH Interprofessional	21	21	9	39	
Civic Engagement & Learning	153	153	180	147	93
Dental Assisting	308	313	312	185	220
Dental Hygiene	375	422	392	212	193
Diagnostic Medical Sonography	106	99	126	129	162
Dietetics & Nutrition	1,119	1,022	1,000	1,090	1,031
Disability & Long-Term Support	43	6	9	57	30
Emergency Medical Technology	366	294	315	242	141
Fire Science	366	329	295	249	165
Health	36				183
Health Care Assisting	152	184	176		60
Health Science	721	1,011	1,278	1,603	1,490
Human Services	1,261	945	810	738	633
Justice	1,568	1,323	1,281	1,305	765
Legal Nurse Consultant	2	5			
Legal Studies	561	525	687	570	732
Medical Assisting	887	952	787	702	509
Medical Laboratory Technology	658	780	705	685	702
Medicine Doctorate	357	718	700	700	738
Nursing	2,201	2,145	2,014	2,131	2,271
Nursing Doctorate	96	178	169	38	
Nursing Science	2,708	2,772	3,024	3,203	3,367
Nursing Science Graduate				262	296
Pharmacy Technology	201	171	168	159	246
Physical Education & Recreation	604	495	442	463	388
Physical Education Professional	884	969	1,054	938	672
Physical Education	9		16		
Physical Therapist Assistant	127	135	144	144	134
Radiologic Technology	454	555	552	535	484
Social Work	1,609	1,424	1,232	1,375	1,289
Surgical Technology			144	144	144
College of Health Total	17,988	17,985	18,026	18,050	17,142
Community & Technical College					
Aerospace Science ROTC	74	107	137	136	123
Air Traffic Control	275	291	320	211	248
Architect Engineering Technology	425	573	500	388	341

Student Credit Hours by Discipline within Campus/College Fall Semesters 2015-2019

Table 2.01

	2015	2016	2017	2018	2019
Anchorage Campus - Community & Technical College (continued)					
Auto/Diesel Technology	706	705	834	891	794
Aviation Maintenance Technology	1,204	1,004	980	1,037	1,136
Aviation Tech/Admin/Mgmt	1,056	1,023	1,143	1,047	795
Aviation Tech/Professional Piloting	444	453	607	396	467
Career & Technical Education	32	36	16	9	
Communication	2,337	2,469	2,403	1,914	2,418
Computer & Networking Technology	1,000	852	728	617	508
Computer Information & Office Systems	126	68			
Construction Management	691	450	417	366	393
Counseling	53	148	20	81	126
Culinary Arts	545	643	544	426	515
English as a Second Language	393	324			
Guidance	834	699	576		
Hospitality Administration				54	150
Library Science	21	23	11	1	15
Mathematics	6,492	6,506	5,746	5,326	4,728
Military Science	87	95	76	77	88
Occupational Safety & Health	634	493	430	411	318
Preparatory English	2,003	1,924	241	48	56
Statistics	489	399	426	477	585
Technology	179	177	144	201	171
University Studies				510	1,016
Welding Technology	650	708	577	350	358
Writing			6,180	6,179	5,847
Community & Technical College Total	20,750	20,170	23,056	21,153	21,196
Honors College					
Complex Systems	9	18	15		
Honors	274	334	213	168	227
Undergrad Research & Scholarship		36			
Honors College Total	283	388	228	168	227
Chugiak-Eagle River					
Accounting	69	51		81	
American Sign Language	64	132	116	104	60
Anthropology	234	177	135	108	
Art	147	255	132	120	45
Biology	180	201	159	114	57
Business Administration	261	267	240	171	
Chemistry	177	105	75	45	
Communication	444	375	393	381	111
Computer Information & Office Systems	7				

Student Credit Hours by Discipline within Campus/College Fall Semesters 2015-2019

Table 2.01

	2015	2016	2017	2018	2019
Computer Information Systems	96	66	36	51	
Dietetics & Nutrition	66				
Economics	186	189	231	195	120
English	771	993	72	57	
Environmental Studies				69	
Geography	117	117	90	66	
Geology	265	186	106	96	
Guidance	231	303	438	219	
History	249	327	333	336	69
Human Services	27				
Justice	42	9	6	6	
Mathematics	969	1,109	1,030	625	123
Medical Assisting	45	57	48	39	42
Music	63	36	51	84	
Philosophy	339	324	129	168	69
Political Science	93	120	135	111	
Psychology	243	264	219	216	75
Spanish	100	96		88	
Statistics	207	168	183	243	99
Writing			951	585	222
Chugiak-Eagle River Total	5,692	5,927	5,308	4,378	1,092
Military Programs					
Anthropology	96	93			
Art	123	84			
Biology	36	128			52
Chemistry	33	24	45	27	
Communication	144	90	60	24	
English	450	309			
History	297	171	54	54	
Mathematics	261	168	169	93	40
Music	27	18	24		
Philosophy	135	192			
Political Science	45				
Preparatory English	33				
Psychology	132	99	69	45	30
Spanish	52	32			
Technology	51				
Writing				33	30
Military Programs Total	1,915	1,408	421	276	152
Anchorage Campus Total	127,536	124,052	119,543	112,586	98,705

Student Credit Hours by Discipline within Campus/College Fall Semesters 2015-2019

Table 2.01

	2015	2016	2017	2018	2019
Kenai Peninsula College					
Anchorage Extension Site					
Electronics Technology	60	45			
Petroleum Technology		39			
Physics		15			
Process Technology	624	410	227		
Technology	3		3		
Anchorage Extension Site Total	687	509	230		
Kachemak Bay Campus					
American Sign Language	16				
Anthropology	105				
Art	241	89	72	137	99
Astronomy				24	
Biology	221	268	313	463	509
Business Administration	84	123	90	102	99
Chemistry	116	130	114	105	207
Communication	99	93	102	57	51
Community Education	12				
Computer Science				39	
Creative Writing & Literary Arts		27			
Dietetics & Nutrition	141	165	222	273	195
Economics	21				
Education	8	7			
Education: Early Childhood	48				
Emergency Medical Technology	45				
English	263	380	215	177	204
Fire Science		24	12		
French		12			
Geology	4	10	39	49	8
Health Care Assisting	42	60	60	60	60
Health Science	75	90	93	30	24
History	126	213	360	387	303
Human Services	159	186	162	138	117
Humanities		93	87	93	39
Justice	111	150	99	69	87
Mathematics	241	332	388	403	332
Medical Assisting	15	18			

Student Credit Hours by Discipline within Campus/College Fall Semesters 2015-2019

Table 2.01

	2015	2016	2017	2018	2019
Physical Education & Recreation	3		10		
Physics	15		6	6	18
Political Science	36	69	36	30	42
Preparatory English	30				
Process Technology	6		3		
Psychology	255	208	378	261	291
Social Work	27				
Statistics		28		28	76
Theater	54		30		
Welding Technology	40	36	44	28	
Writing			252	201	126
Kachemak Bay Campus Total	2,659	2,811	3,187	3,160	2,887
Kenai River Campus					
Accounting	177	204	252	306	210
Alaska Native Studies	97	116	124	85	192
American Sign Language	32				
Anthropology	216	158	194	273	159
Art	288	270	264	228	246
Astronomy			50	40	
Biology	385	406	571	421	452
Business Administration	210	321	258	231	249
Chemistry	626	639	544	595	312
Communication	486	465	378	426	261
Community Education			4	9	
Computer Information & Office Systems	8		2	2	
Computer Information Systems	240	225	141	126	87
Computer Science	117	51			9
Dietetics & Nutrition	78	63			
Economics	42			48	
Education	174	46	370	123	42
Education: Early Childhood	134	122	125	90	60
Education: Elementary Education	15	10	29		
Education: Foundations		78	87	111	
Electronics Technology	206	280	171	61	68
Emergency Medical Technology	78	168	82	120	83
English	909	1,056	195	81	15
Environmental Studies	85	58	35	25	30
Fire Science	153				75
French	40	28			36
Geology		90	87	93	98
Guidance	27	51	36		

Student Credit Hours by Discipline within Campus/College Fall Semesters 2015-2019

Table 2.01

	2015	2016	2017	2018	2019
Kenai Peninsula College - Kenai River Campus (continued)					
Health Care Assisting	60		60	48	60
History	162	156	201	117	63
Human Services	15	18	63	54	86
Japanese	28	72	40	44	28
Justice	66	60	63	51	66
Library Science	14	10	5	9	2
Linguistics					9
Logistics Operations	39	48	24	33	27
Mathematics	2,051	2,583	2,173	2,146	1,557
Medical Assisting	30	30			
Music	93	105	81	102	51
Occupational Safety & Health	36				
Paramedical Technology	168	108	144	144	228
Petroleum Technology	166	126	108	69	36
Philosophy		51		129	93
Physical Education & Recreation	10				21
Physics	357	194	183	157	180
Political Science	9	3	30	30	30
Preparatory English	210	240			
Process Technology	959	768	698	868	739
Psychology	397	317	295	279	368
Social Work	6				
Sociology	72	114	114	72	72
Spanish	52	44	56	32	36
Statistics	341	263	297	318	171
University Studies				21	
Welding Technology	128	180	148	176	148
Writing			939	1,074	1,059
Kenai River Campus Total	10,292	10,395	9,721	9,467	7,814
Resurrection Bay Extension Site					
Biology					36
English	21	15			
Mathematics	27	27	30		
Philosophy		21			
Physical Education & Recreation	9				
Political Science	36		54	18	27
Writing			21	18	33
Resurrection Bay Extension Site Total	93	63	105	36	96
Kenai Peninsula College Total	13,731	13,778	13,243	12,663	10,797

Student Credit Hours by Discipline within Campus/College Fall Semesters 2015-2019

Table 2.01

	2015	2016	2017	2018	2019
Kodiak College					
Accounting	189	255	180	216	204
Alaska Native Studies	56	188	108	109	99
Anthropology	114	132	183	123	90
Architectural & Engineering Technology		54	54	18	18
Art	59	36	102	105	93
Auto/Diesel Technology			54		
Aviation Tech/Professional Piloting			42	27	
Biology	397	353	450	467	376
Business Administration	261	228	258	282	306
Chemistry	67	95		70	65
Civic Engagement & Learning			45		12
Communication	69	69	60	48	24
Computer Information & Office Systems	105	35	33	19	32
Computer Information Systems	96	78	69	60	39
Construction Management		32			
Dietetics & Nutrition					105
Economics	54	51	57	66	63
Education	13	29			
Education: Early Childhood	102	75	51	102	57
Education: Elementary Education	38	41	36	51	
Education: Foundations		51	27	24	
Education: Special Education	96	51	48	45	
Electronics Technology	44			28	
English	423	360	117	30	21
Environmental Studies					41
Guidance	39	27			
History	54	18	48	36	9
Humanities	45	45	39	24	24
Justice	42			21	
Liberal Studies: Integrated Core	27				
Liberal Studies: Integrated Science			45		
Mathematics	246	261	159	93	60
Medical Assisting	92	94	102	114	99
Music	39		12		
Occupational Safety & Health	59	3			
Philosophy	21	36	30	18	3
Physical Education & Recreation	14	15	8	12	19

Student Credit Hours by Discipline within Campus/College Fall Semesters 2015-2019

Table 2.01

	2015	2016	2017	2018	2019
Kodiak College (continued)					
Preparatory English	114	114			
Psychology	100	96	154	111	115
Russian			56		
Sociology	153	162	147	108	99
Spanish		12	32	56	108
Statistics	30	18	15	30	36
Technology	4	4			
University Studies				24	
Welding Technology	66	342	279	177	239
Writing			300	330	358
Kodiak College Total	3,328	3,460	3,400	3,044	2,814
Matanuska-Susitna College					
Accounting	294	276	285	252	258
American Sign Language	184	184	64	184	136
Anthropology	585	546	417	411	414
Art	561	564	474	417	417
Auto/Diesel Technology				3	
Biology	983	980	1,018	910	740
Business Administration	657	675	600	423	540
Chemistry	424	435	446	436	390
Communication	342	339	345	261	342
Computer & Networking Technology	349	352	307	345	288
Computer Information & Office Systems	245	173	207	114	18
Computer Information Systems	105	135	153	120	129
Computer Science	12				
Culinary Arts				2	
Dance	14				
Dental Assisting					9
Dietetics & Nutrition	42	57	33	18	
Economics	270	177	261	150	159
Education: Early Childhood	54	48			
Education: Elementary Education	122	48			
Education: Foundations	51	42			
Emergency Medical Technology	180	286	184	198	128
Engineering	53	59			
Engineering Science	45	30			

Student Credit Hours by Discipline within Campus/College Fall Semesters 2015-2019

Table 2.01

	2015	2016	2017	2018	2019
English	1,050	855	72		
Environmental Studies			67	48	39
Fire Science				12	9
French	48	24	40	32	36
Geography		78	150	123	123
Geology		71			
Health					51
Health Care Assisting				102	120
Health Science		72	45	63	63
History	870	717	807	678	492
Human Services	279	201	165	126	99
Humanities	54				
International Studies		15	12	6	3
Japanese	100	64	72	76	84
Justice	81	69	84	99	27
Liberal Studies: Social Science	12				
Logistics Operations	24			54	39
Mathematics	1,605	1,636	1,891	1,560	1,324
Medical Assisting	99	147	135	192	231
Music	144	138	162	186	129
Paramedical Technology	180	108	204	180	204
Pharmacy Technology				54	63
Philosophy	255	219	336	282	144
Physical Education & Recreation			18	19	14
Physics	176	205	92	159	210
Political Science	45	21	234	216	213
Preparatory English	396	381	57		
Psychology	498	450	510	360	282
Refrigeration & Heating	319	320	291	224	205
Renewable Energy	53	32			
Russian	52	28	28	32	
Social Work	15				
Sociology	198	186	147	120	126
Spanish	124	112	204	180	96
Statistics	93	141	177	156	132
Theater	102	69	63	60	21
University Studies					66
Veterinary Assisting	50	137	151	250	163
Women's Studies			39	12	
Writing			1,389	1,251	924
Matanuska-Susitna College Total	12,494	11,902	12,436	11,156	9,700

Student Credit Hours by Discipline within Campus/College Fall Semesters 2015-2019

Table 2.01

	2015	2016	2017	2018	2019
Prince William Sound College					
Anthropology	42			87	69
Art	15			7	4
Astronomy		77	86	80	96
Biology	48	78	64	25	36
Business Administration	15	27		39	
Chemistry		5			
Communication	57	69	54	63	78
Computer Information & Office Systems	52	6		6	3
Computer Information Systems		30	18	9	6
Computer Science			24	24	
Dietetics & Nutrition	39				
Education	21	14	23	1	
Education: Development & Leadership	24				
Emergency Medical Technology	84	48		15	9
English	162	171		18	52
Environmental Studies			28	19	
Film	15	18	18		18
Geology	109	113	90	85	111
Guidance	27	24	21		
History	57	90	132	72	
Human Services	64		12		
Humanities	42	30	48	39	30
Industrial Technology	249	613	660	723	755
Justice	21			30	45
Marine Technology	493				
Mathematics	152	161	159	326	371
Medical Assisting	63	102	117	111	102
Music	36	21	30	36	
Occupational Safety & Health		15	147	96	168
Outdoor Studies	102				
Physical Education & Recreation	19	87	84	74	77
Physical Education Professional		21	41	64	83
Physics			18	27	
Political Science	75	39		42	24
Psychology	33	126	66	30	
Sociology					36
Spanish	44				
Statistics	30				
Technology					33
Theater		30	12	24	27
University Studies				21	18
Writing			153	228	99
Total	2,190	2,015	2,105	2,421	2,350

Student Credit Hours by Discipline within Campus/College Fall Semesters 2015-2019

Table 2.01

	2015	2016	2017	2018	2019
Copper Basin Extension Center					
Art	54	42	72	45	18
Biology				56	
Computer Information & Office Systems			15		
Education		28		18	
Emergency Medical Technology				21	
English	15				
Health Care Assisting		36			
History		21			
Mathematics	33	44			
Music	54	39	27	48	42
Political Science		33	33		
Sociology	69	51	60	15	48
Spanish	84	64	56	36	84
Copper Basin Extension Center Total	309	358	263	239	192
Cordova Extension Center					
Biology	8				
Computer Information & Office Systems	12				
Education	36				
English	45	33			
History	33	6	57		36
Mathematics	28	20	32	32	40
Physical Education Professional					7
Political Science		15		45	
Writing			30		
Cordova Extension Center Total	162	74	119	77	83
Prince William Sound College Total	2,660	2,447	2,487	2,737	2,625
UAA Total	159,749	155,639	151,109	142,186	124,641

Source: UA Data Strategy and Institutional Research (DSIR) Decision Support Database (DSD) data system at semester closing freeze.

Notes:

1. Student credit hours are based on course level, representing credit courses at the 050 level and above, and do not include auditors.
2. Totals may not equal the sum of all categories due to rounding.
3. A restructuring of English and Math GER courses, starting fall 2017, have shifted their credit hours from College of Arts & Sciences to Community & Technical College. Additionally, English GER courses have been renamed to Writing.

Student Credit Hour Trend by Semester and Campus, Academic Years 2001-2020

Table 2.02

Year	Anchorage Campus					Kenai Peninsula College					Kodiak College				
	Summer	Fall	Spring	Annual	% +/- over Prev Year	Summer	Fall	Spring	Annual	% +/- over Prev Year	Summer	Fall	Spring	Annual	% +/- over Prev Year
2000 - 01	22,478	103,783	98,054	224,315		607	8,602	9,084	18,293		65	2,909	2,862	5,836	
2001 - 02	23,762	106,149	102,242	232,153	4%	760	9,712	9,362	19,834	8%	153	2,998	3,095	6,246	7%
2002 - 03	23,133	112,999	109,799	245,930	6%	359	9,274	9,065	18,698	-6%	115	3,080	3,622	6,817	9%
2003 - 04	27,493	119,871	116,406	263,769	7%	727	9,509	8,396	18,632	0%	137	2,935	3,120	6,192	-9%
2004 - 05	29,718	124,891	117,540	272,148	3%	489	8,958	8,904	18,351	-2%	101	2,406	2,529	5,036	-19%
2005 - 06	29,397	127,294	120,947	277,638	2%	567	9,277	8,972	18,816	3%	157	2,215	2,639	5,011	-1%
2006 - 07	29,102	129,625	120,528	279,254	1%	782	9,883	9,230	19,895	6%	37	2,220	2,442	4,699	-6%
2007 - 08	28,575	129,803	121,429	279,807	0%	885	9,567	9,708	20,160	1%	141	2,345	2,957	5,443	16%
2008 - 09	30,409	131,305	123,090	284,803	2%	1,228	10,137	10,707	22,072	10%	188	2,387	2,696	5,271	-3%
2009 - 10	31,438	135,284	128,769	295,490	4%	1,326	12,270	12,901	26,497	20%	466	2,027	3,000	5,493	4%
2010 - 11	33,916	138,504	130,713	303,132	3%	2,116	13,141	13,815	29,072	10%	400	2,555	3,652	6,607	20%
2011 - 12	33,418	139,882	132,334	305,633	1%	3,040	15,403	15,301	33,744	16%	648	3,276	4,134	8,058	22%
2012 - 13	32,196	137,666	130,075	299,937	-2%	3,237	14,859	14,755	32,851	-3%	733	3,653	3,876	8,262	3%
2013 - 14	31,078	135,749	124,372	291,199	-3%	2,792	14,695	14,840	32,327	-2%	784	3,533	4,293	8,610	4%
2014 - 15	29,491	130,469	122,128	282,088	-3%	3,030	15,734	14,823	33,587	4%	699	3,415	4,201	8,315	-3%
2015 - 16	28,408	127,536	118,447	274,390	-3%	3,417	13,731	12,487	29,635	-12%	794	3,328	3,471	7,593	-9%
2016 - 17	27,244	124,052	112,844	264,140	-4%	3,164	13,778	12,937	29,879	1%	799	3,460	3,412	7,671	1%
2017 - 18	26,710	119,543	107,312	253,565	-4%	3,220	13,243	11,937	28,400	-5%	844	3,400	3,146	7,390	-4%
2018 - 19	26,249	112,586	100,971	239,805	-5%	3,386	12,663	11,157	27,206	-4%	806	3,044	2,770	6,620	-10%
2019 - 20	25,080	98,705	88,747	212,532	-11%	2,804	10,797	9,172	22,773	-16%	629	2,814	2,398	5,841	-12%

Student Credit Hour Trend by Semester and Campus, Academic Years 2001-2020

Table 2.02

Year	Matanuska-Susitna College					Prince William Sound College					Total UAA				
	Summer	Fall	Spring	Annual	% +/- over Prev Year	Summer	Fall	Spring	Annual	% +/- over Prev Year	Summer	Fall	Spring	Annual	% +/- over Prev Year
2000 - 01	1,024	9,102	8,735	18,861		935	3,887	4,355	9,177		25,559	130,199	124,875	280,633	
2001 - 02	920	9,614	10,033	20,567	9%	897	3,785	4,472	9,153	0%	27,183	133,997	130,946	292,125	4%
2002 - 03	1,541	10,445	11,036	23,022	12%	988	4,709	4,766	10,463	14%	26,651	142,393	140,069	309,113	6%
2003 - 04	1,395	11,335	10,696	23,426	2%	1,132	4,417	5,736	11,284	8%	31,545	149,632	145,849	327,026	6%
2004 - 05	690	10,099	9,379	20,168	-14%	657	4,384	5,112	10,153	-10%	32,020	152,121	144,454	328,596	1%
2005 - 06	569	10,579	9,493	20,641	2%	913	3,911	4,719	9,542	-6%	32,056	153,276	146,770	332,101	1%
2006 - 07	592	10,323	9,246	20,161	-2%	937	4,454	4,986	10,378	9%	31,450	156,505	146,432	334,386	1%
2007 - 08	567	10,461	9,870	20,898	4%	1,258	3,805	4,324	9,388	-10%	31,426	155,981	148,288	335,695	0%
2008 - 09	841	10,699	9,936	21,476	3%	418	3,696	3,050	7,164	-24%	33,083	158,224	149,478	340,786	2%
2009 - 10	977	12,271	11,985	25,233	18%	484	4,187	3,757	8,428	18%	34,691	166,038	160,412	361,141	6%
2010 - 11	1,778	13,609	12,751	28,138	12%	642	3,441	4,441	8,524	1%	38,852	171,249	165,372	375,473	4%
2011 - 12	1,847	14,711	13,421	29,979	7%	1,091	3,754	4,279	9,122	7%	40,043	177,025	169,469	386,536	3%
2012 - 13	1,912	14,228	12,361	28,501	-5%	552	3,340	4,270	8,162	-11%	38,630	173,746	165,337	377,712	-2%
2013 - 14	2,084	13,366	12,407	27,857	-2%	345	2,993	3,839	7,177	-12%	37,083	170,336	159,751	367,170	-3%
2014 - 15	2,112	12,643	11,225	25,980	-7%	434	2,703	4,293	7,430	4%	35,766	164,964	156,670	357,400	-3%
2015 - 16	2,122	12,494	11,358	25,974	0%	273	2,660	3,591	6,524	-12%	35,014	159,749	149,354	344,116	-4%
2016 - 17	2,455	11,902	10,222	24,579	-5%	238	2,447	3,428	6,113	-6%	33,900	155,639	142,843	332,382	-3%
2017 - 18	2,010	12,436	10,673	25,119	2%	328	2,487	3,569	6,384	4%	33,112	151,109	136,637	320,857	-3%
2018 - 19	1,741	11,156	10,652	23,549	-6%	261	2,737	3,681	6,679	5%	32,443	142,186	129,231	303,859	-5%
2019 - 20	1,329	9,700	8,623	19,652	-17%	455	2,625	2,170	5,250	-21%	30,297	124,641	111,109	266,047	-12%

Source: UA Data Strategy and Institutional Research (DSIR) Decision Support Database (DSD) data system at semester closing freeze.

Notes:

1. Student Credit Hours are based on credit courses at the 050 course level and above, and do not include auditors.
2. Prior to AY 2005, Total UAA includes SCH generated by Northern Military Programs.

e-Learning: Origin of Courses vs. Origin of Students Admitted, Academic Years 2016-2020

Table 2.03

Campus that Provides Distance Courses	Headcount						Matriculation Campus Enrollment (Seat Count)								Student Credit Hours						
	Anchorage	Kenai	Kodiak	Mat-Su	PWSC	Non UAA	TOTAL	Anchorage	Kenai	Kodiak	Mat-Su	PWSC	Non UAA	TOTAL	Anchorage	Kenai	Kodiak	Mat-Su	PWSC	Non UAA	TOTAL
Anchorage Campus																					
2015 - 2016	8,661	109	34	172	12	336	9,287	17,900	129	46	258	20	424	18,777	52,286	386	136	763	58	1,151	54,780
2016 - 2017	8,737	117	37	167	14	380	9,418	19,420	168	42	254	19	465	20,368	57,027	502	116	751	57	1,216	59,669
2017 - 2018	9,483	154	39	158	23	594	10,418	21,513	226	53	270	33	704	22,799	62,665	498	141	805	80	1,609	65,798
2018 - 2019	10,144	134	44	169	24	618	11,105	23,488	194	75	282	31	798	24,868	68,501	526	216	836	88	1,839	72,006
2019 - 2020	9,919	190	40	155	27	771	11,065	23,303	306	60	254	36	1,071	25,030	66,703	623	172	745	83	2,298	70,624
Kenai Peninsula College																					
2015 - 2016	2,300	757	46	131	12	191	3,385	3,755	1,712	77	200	17	226	5,987	11,310	4,941	227	605	51	745	17,879
2016 - 2017	2,437	656	51	178	15	398	3,690	3,996	1,561	78	279	18	513	6,445	11,889	4,503	231	821	56	1,765	19,265
2017 - 2018	2,644	616	39	149	17	247	3,679	4,436	1,516	79	246	33	326	6,636	13,118	4,362	239	726	91	1,065	19,601
2018 - 2019	2,582	658	36	143	15	268	3,673	4,455	1,564	61	221	22	356	6,679	13,013	4,517	170	653	66	1,067	19,486
2019 - 2020	2,129	593	57	129	19	230	3,129	3,678	1,568	87	201	29	293	5,856	10,624	4,507	264	593	84	930	17,002
Kodiak College																					
2015 - 2016	848	32	214	46	9	57	1,202	1,269	41	424	69	10	72	1,885	3,447	118	1,113	189	24	189	5,080
2016 - 2017	808	38	216	94	8	63	1,215	1,171	50	450	127	10	81	1,889	3,189	143	1,302	327	32	219	5,212
2017 - 2018	850	35	208	61	4	63	1,214	1,259	49	467	85	6	100	1,966	3,399	133	1,329	227	18	243	5,349
2018 - 2019	868	46	137	68	7	58	1,170	1,241	70	289	86	7	93	1,786	3,350	186	799	249	19	224	4,827
2019 - 2020	725	37	161	51	10	38	1,016	1,079	49	303	66	17	62	1,576	2,899	133	863	194	42	156	4,287
Matanuska-Susitna College																					
2015 - 2016	911	24	9	358	3	39	1,331	1,216	41	15	588	3	49	1,912	3,585	102	40	1,621	9	131	5,488
2016 - 2017	789	18	8	360	7	34	1,211	991	21	12	614	7	42	1,687	2,892	55	29	1,606	21	109	4,712
2017 - 2018	722	11	5	374	2	29	1,141	935	14	5	670	2	32	1,658	2,757	42	13	1,721	6	101	4,640
2018 - 2019	656	13	4	352	1	22	1,037	809	17	6	544	2	27	1,405	2,424	49	17	1,587	6	74	4,157
2019 - 2020	623	14	4	235	2	25	894	779	15	6	344	2	26	1,172	2,338	45	17	1,081	6	78	3,565

e-Learning: Origin of Courses vs. Origin of Students Admitted, Academic Years 2016-2020

Table 2.03

Campus that Provides Distance Courses	Headcount							Matriculation Campus Enrollment (Seat Count)							Student Credit Hours						
	Anchorage	Kenai	Kodiak	Mat-Su	PWSC	Non UAA	TOTAL	Anchorage	Kenai	Kodiak	Mat-Su	PWSC	Non UAA	TOTAL	Anchorage	Kenai	Kodiak	Mat-Su	PWSC	Non UAA	TOTAL
Prince William Sound College																					
2015 - 2016	125	10	7	3	131	41	315	167	10	10	3	323	54	567	460	32	24	9	923	153	1,601
2016 - 2017	296	21	3	27	136	52	534	404	24	3	37	290	68	826	1,049	70	9	99	831	183	2,241
2017 - 2018	408	20	12	20	86	36	580	550	21	14	25	193	47	850	1,463	61	40	71	525	122	2,282
2018 - 2019	494	38	9	45	91	39	715	617	44	11	52	244	47	1,015	1,675	128	31	149	695	140	2,818
2019 - 2020	394	27	16	28	96	34	595	506	35	24	43	190	43	841	1,402	96	67	114	549	120	2,348
UAA Total																					
2015 - 2016	10,008	808	247	521	145	606	12,198	24,307	1,933	572	1,118	373	825	29,128	71,088	5,579	1,540	3,187	1,065	2,369	84,828
2016 - 2017	10,041	712	247	536	150	830	12,402	25,982	1,824	585	1,311	344	1,169	31,215	76,046	5,273	1,687	3,604	997	3,492	91,099
2017 - 2018	10,765	708	238	545	109	901	13,177	28,693	1,826	618	1,296	267	1,209	33,909	83,402	5,096	1,762	3,550	720	3,140	97,670
2018 - 2019	11,329	720	160	524	114	911	13,657	30,610	1,889	442	1,185	306	1,321	35,753	88,963	5,406	1,233	3,474	874	3,344	103,294
2019 - 2020	10,933	716	189	391	122	1,027	13,292	29,345	1,973	480	908	274	1,495	34,475	83,966	5,404	1,383	2,727	764	3,582	97,826

Source: UA Data Strategy and Institutional Research (DSIR) Decision Support Database (DSD) data system at semester closing freeze.

Notes:

1. Enrollment includes auditors. Student credit hours include audit hours.
2. An Academic Year (AY) includes summer, fall and spring semesters, starting with summer as the first term counted.
3. Totals may not equal the sum of all categories due to rounding.
4. Distance courses are 0% to 50% location based using specific Banner codes 0, 1, 2 where: 0 = 0% location based; 1 = 1-20% location based; 2 = 21-50% location based. Courses included in this report are session codes 0, 1, and 2.

Awards

Degree and Certificate Awards Conferred by Type and Campus Academic Years 2016-2020

Table 3.01

Degree Type	Academic Year					Total 2016-2020	% Change 2016-2020
	2016	2017	2018	2019	2020		
Anchorage Campus							
Licensure/Post Certificate	88	80	89	41	43	341	-51.1%
Occupational Endorsement	94	66	40	41	47	288	-50.0%
Certificate	59	45	44	44	41	233	-30.5%
Associate	577	583	521	559	643	2,883	11.4%
Baccalaureate	1,177	1,175	1,209	1,148	1,112	5,821	-5.5%
Master	251	220	247	219	203	1,140	-19.1%
Doctorate	1	7	2	6	8	24	700.0%
Total	2,247	2,176	2,152	2,058	2,097	10,730	-6.7%
Kenai Peninsula College							
Certificate	7	5	18	11	10	51	42.9%
Associate	118	109	109	76	75	487	-36.4%
Total	125	114	127	87	85	538	-32.0%
Kodiak College							
Occupational Endorsement	1	7	4		1	13	0.0%
Associate	22	21	26	24	26	119	18.2%
Total	23	28	30	24	27	132	17.4%
Matanuska-Susitna College							
Occupational Endorsement	11	8	14	13	16	62	45.5%
Certificate	1	2	2	3		8	-100.0%
Associate	118	113	101	111	98	541	-16.9%
Total	130	123	117	127	114	611	-12.3%
Prince William Sound College							
Occupational Endorsement	5	1	2	9	1	18	-80.0%
Associate	23	18	16	12	15	84	-34.8%
Total	28	19	18	21	16	102	-42.9%
UAA Total							
Licensure/Post Certificate	88	80	89	41	43	341	-51.1%
Occupational Endorsement	111	82	60	63	65	381	-41.4%
Certificate	67	52	64	58	51	292	-23.9%
Associate	858	844	773	782	857	4,114	-0.1%
Baccalaureate	1,177	1,175	1,209	1,148	1,112	5,821	-5.5%
Master	251	220	247	219	203	1,140	-19.1%
Doctorate	1	7	2	6	8	24	700.0%
Total	2,553	2,460	2,444	2,317	2,339	12,113	-8.4%

Degree and Certificate Awards Conferred by Award Type Academic Years 2016-2020

Table 3.02

Degree Type	Academic Year					Total 2016-2020	% Change 2016-2020
	2016	2017	2018	2019	2020		
Associate of Applied Science	587	564	523	482	483	2,639	-17.7%
Associate of Arts	271	280	250	300	374	1,475	38.0%
Bachelor of Arts	414	386	373	317	289	1,779	-30.2%
Bachelor of Business Administration	219	206	168	219	181	993	-17.4%
Bachelor of Fine Arts	3	6	7	6	4	26	33.3%
Bachelor of Human Services	13	16	15	17	10	71	-23.1%
Bachelor of Liberal Studies	1		3			4	-100.0%
Bachelor of Music	9	8	10	9	5	41	-44.4%
Bachelor of Science	488	524	600	554	605	2,771	24.0%
Bachelor of Social Work	30	29	33	26	18	136	-40.0%
Certificate	67	52	64	58	51	292	-23.9%
Doctor of Nursing Practice		4		3	4	11	
Doctor of Philosophy	1	3	2	3	4	13	300.0%
Graduate Certificate	85	55	73	32	30	275	-64.7%
Master - Other	1	1				2	-100.0%
Master of Arts	12	3	13	7	9	44	-25.0%
Master of Arts in Teaching	15	19	25	20		79	-100.0%
Master of Business Administration	36	27	26	28	33	150	-8.3%
Master of Civil Engineering	3	1	2			6	-100.0%
Master of Education	47	55	45	40	34	221	-27.7%
Master of Fine Arts	9	8	13	11	9	50	0.0%
Master of Public Administration	10	9	6	9	7	41	-30.0%
Master of Public Health	17	5	12	10	7	51	-58.8%
Master of Science	85	72	86	61	74	378	-12.9%
Master of Social Work	16	20	19	33	30	118	87.5%
Occupational Endorsement Cert.	111	82	60	63	65	381	-41.4%
Post Baccalaureate Certificate	3	25	16	9	13	66	333.3%
Total	2,553	2,460	2,444	2,317	2,339	12,113	-8.4%

Source: UA Data Strategy and Institutional Research (DSIR) Decision Support Database (DSD) Degrees data table compiled by UAA IR.

Degree and Certificate Awards by Classification of Instructional Program (CIP) Academic Years 2016-2020

Table 3.03

CIP Type	2016	2017	2018	2019	2020
Area, Ethnic, Cultural, Gender, and Group Studies	6	4	3	1	
Biological and Biomedical Sciences	51	45	48	36	36
Business, Management, Marketing, and Related Support Services	426	382	322	351	338
Communication, Journalism, and Related Programs	19	19	26	27	13
Computer and Information Sciences and Support Services	51	48	47	45	41
Education	207	199	203	129	78
Engineering Technologies And Engineering-Related Fields	139	116	132	97	90
Engineering	101	122	138	132	113
English Language and Literature/Letters	53	42	53	43	52
Family and Consumer Sciences/Human Sciences	18	14	9	29	23
Foreign Languages, Literatures, and Linguistics	21	15	19	10	20
Health Professions and Related Programs	523	495	544	509	562
History	32	37	23	25	30
Homeland Security, Law Enforcement, Firefighting & Related Services	56	61	49	41	35
Legal Professions and Studies	9	20	24	13	21
Liberal Arts and Sciences, General Studies and Humanities	272	280	253	300	374
Mathematics and Statistics	16	7	14	10	10
Mechanic and Repair Technologies/Technicians	52	64	50	71	66
Multi/Interdisciplinary Studies	53	61	59	56	44
Natural Resources and Conservation	14	9	16	6	10
Parks, Recreation, Leisure, and Fitness Studies	12	13	21	20	22
Personal and Culinary Services	24	15	17	16	12
Philosophy and Religious Studies	6	7	9	4	1
Physical Sciences	22	21	20	10	19
Precision Production	35	39	25	25	26
Psychology	96	79	78	60	74
Public Administration and Social Service Professions	67	66	66	70	59
Science Technologies/Technicians	25	23	16	26	26
Social Sciences	66	77	72	58	55
Transportation and Materials Moving	43	43	53	52	42
Visual and Performing Arts	38	37	35	45	47
Total	2,553	2,460	2,444	2,317	2,339

Source: UA Data Strategy and Institutional Research (DSIR) Decision Support Database (DSD) Degrees data table compiled by UAA IR.

Note: The Classification of Instructional Programs (CIP) Code is a taxonomy defined by the National Center for Education Statistics (NCES) of the U.S. Department of Education.

Degree and Certificate Awards Conferred UAA Academic Years 1988-2020

Table 3.04

Year	Conferred								Cumulative							
	Post Cert	Occupat'l	Cert	Assoc	Bachelor	Master's	Doctorate	Total	Post Cert	Occupat'l	Cert	Assoc	Bachelor	Master's	Doctorate	Total
1988 - 1995			805	4,260	4,670	1,144		10,879			805	4,260	4,670	1,144		10,879
1995 - 96			110	679	833	180		1,802			915	4,939	5,503	1,324		12,681
1996 - 97			89	629	749	235		1,702			1,004	5,568	6,252	1,559		14,383
1997 - 98			86	603	770	222		1,681			1,090	6,171	7,022	1,781		16,064
1998 - 99			91	563	708	263		1,625			1,181	6,734	7,730	2,044		17,689
1999 - 00			71	478	724	203		1,476			1,252	7,212	8,454	2,247		19,165
2000 - 01			61	515	705	178		1,459			1,313	7,727	9,159	2,425		20,624
2001 - 02			74	547	766	159		1,546			1,387	8,274	9,925	2,584		22,170
2002 - 03			88	530	770	204		1,592			1,475	8,804	10,695	2,788		23,762
2003 - 04			91	601	785	241		1,718			1,566	9,405	11,480	3,029		25,480
2004 - 05	16		107	523	778	263		1,687	16		1,673	9,928	12,258	3,292		27,167
2005 - 06	22		108	634	841	238		1,843	38		1,781	10,562	13,099	3,530		29,010
2006 - 07	44		99	676	847	356		2,022	82		1,880	11,238	13,946	3,886		31,032
2007 - 08	50	47	85	679	871	289		2,021	132	47	1,965	11,917	14,817	4,175		33,053
2008 - 09	38	49	74	684	956	270		2,071	170	96	2,039	12,601	15,773	4,445		35,124
2009 - 10	60	116	60	719	920	296		2,171	230	212	2,099	13,320	16,693	4,741		37,295
2010 - 11	63	123	78	756	1,001	305		2,326	293	335	2,177	14,076	17,694	5,046		39,621
2011 - 12	66	153	67	774	971	276		2,307	359	488	2,244	14,850	18,665	5,322		41,928
2012 - 13	64	136	57	854	1,064	312	2	2,489	423	624	2,301	15,704	19,729	5,634	2	44,417
2013 - 14	98	162	66	905	1,131	268	3	2,633	521	786	2,367	16,609	20,860	5,902	5	47,050
2014 - 15	93	132	75	873	1,094	293	1	2,561	614	918	2,442	17,482	21,954	6,195	6	49,611
2015 - 16	88	111	67	858	1,177	251	1	2,553	702	1,029	2,509	18,340	23,131	6,446	7	52,164
2016 - 17	80	82	52	844	1,175	220	7	2,460	782	1,111	2,561	19,184	24,306	6,666	14	54,624
2017 - 18	89	60	64	773	1,209	247	2	2,444	871	1,171	2,625	19,957	25,515	6,913	16	57,068
2018 - 19	41	63	58	782	1,148	219	6	2,317	912	1,234	2,683	20,739	26,663	7,132	22	59,385
2019 - 20	43	65	51	857	1,112	203	8	2,339	955	1,299	2,734	21,596	27,775	7,335	30	61,724

Source: UA Data Strategy and Institutional Research (DSIR) Decision Support Database (DSD) Degrees data table is collected in UAA Semester Report by UAA IR.

Faculty and Staff

Employee Headcount Trends by UAA Administrative Unit, Fall 2015-2019 All Employees

Table 4.01

	2015			2016			2017			2018			2019			2015-2019 % Change in Total
	Faculty	Non Fac	Total	Faculty	Non Fac	Total	Faculty	Non Fac	Total	Faculty	Non Fac	Total	Faculty	Non Fac	Total	
Anchorage Campus																
College of Arts & Sciences	377	244	621	360	252	612	332	219	551	312	217	529	242	211	453	-27%
College of Business & Public Policy	83	77	160	78	70	148	84	75	159	77	72	149	73	60	133	-17%
College of Engineering	51	75	126	51	92	143	49	99	148	49	89	138	40	74	114	-10%
College of Health	228	180	408	222	182	404	226	190	416	235	197	432	233	183	416	2%
Community & Technical College	103	129	232	103	119	222	104	125	229	122	117	239	105	120	225	-3%
Consortium Library	27	73	100	27	61	88	26	56	82	27	52	79	24	54	78	-22%
Chancellor's Office	1	51	52	1	48	49	1	49	50		54	54		51	51	-2%
Provost Operations	89	134	223	89	136	225	74	155	229	62	157	219	44	156	200	-10%
VC, Administrative Operation	2	545	547		441	441		395	395	4	388	392		334	334	-39%
VC, Student Affairs		275	275		327	327		331	331		320	320		260	260	-5%
VC, University Advancement		37	37		34	34		20	20		24	24		18	18	-51%
Anchorage Campus Total	961	1,820	2,781	931	1,762	2,693	896	1,714	2,610	888	1,687	2,575	761	1,521	2,282	-18%
Kenai Peninsula College	127	137	264	119	120	239	122	121	243	114	120	234	115	111	226	-14%
Kodiak College	37	37	74	32	31	63	39	32	71	36	31	67	29	26	55	-26%
Matanuska-Susitna College	110	79	189	111	58	169	107	59	166	97	64	161	81	58	139	-26%
Prince William Sound College	38	50	88	29	45	74	29	49	78	31	48	79	33	47	80	-9%
UAA Total	1,273	2,123	3,396	1,222	2,016	3,238	1,193	1,975	3,168	1,166	1,950	3,116	1,019	1,763	2,782	-18%

Employee Headcount Trends by UAA Administrative Unit, Fall 2015-2019

Regular and Term Employees

Table 4.01a

	2015			2016			2017			2018			2019			2015-2019 % Change in Total
	Faculty	Non Fac	Total	Faculty	Non Fac	Total	Faculty	Non Fac	Total	Faculty	Non Fac	Total	Faculty	Non Fac	Total	
Anchorage Campus																
College of Arts & Sciences	223	95	318	221	102	323	209	99	308	190	94	284	164	71	235	-26%
College of Business & Public Policy	59	37	96	57	36	93	57	39	96	56	39	95	52	28	80	-17%
College of Engineering	39	15	54	34	16	50	37	20	57	39	20	59	34	16	50	-7%
College of Health	138	122	260	135	120	255	135	117	252	133	122	255	128	121	249	-4%
Community & Technical College	47	43	90	49	36	85	48	33	81	60	35	95	60	39	99	10%
Consortium Library	27	27	54	27	28	55	26	25	51	27	25	52	24	24	48	-11%
Chancellor's Office	1	44	45	1	43	44	1	45	46		50	50		45	45	0%
Provost Operations	23	72	95	21	82	103	20	82	102	20	100	120	19	108	127	34%
VC, Administrative Operation	2	325	327		283	283		263	263		258	258		212	212	-35%
VC, Student Affairs		123	123		148	148		144	144		146	146		121	121	-2%
VC, University Advancement		23	23		22	22		20	20		22	22		18	18	-22%
Anchorage Campus Total	559	926	1,485	545	916	1,461	533	887	1,420	525	911	1,436	481	803	1,284	-14%
Kenai Peninsula College	39	69	108	37	66	103	35	63	98	33	66	99	32	65	97	-10%
Kodiak College	13	28	41	13	21	34	13	20	33	13	17	30	13	17	30	-27%
Matanuska-Susitna College	30	43	73	29	42	71	26	39	65	25	41	66	22	35	57	-22%
Prince William Sound College	7	32	39	6	31	37	7	30	37	6	33	39	7	30	37	-5%
UAA Total	648	1,098	1,746	630	1,076	1,706	614	1,039	1,653	602	1,068	1,670	555	950	1,505	-14%

Employee Headcount Trends by UAA Administrative Unit, Fall 2015-2019

Temporary Employees

Table 4.01b

	2015			2016			2017			2018			2019			2015-2019 % Change in Total
	Faculty	Non Fac	Total	Faculty	Non Fac	Total	Faculty	Non Fac	Total	Faculty	Non Fac	Total	Faculty	Non Fac	Total	
Anchorage Campus																
College of Arts & Sciences	154	149	303	139	150	289	123	120	243	122	123	245	78	140	218	-28%
College of Business & Public Policy	24	40	64	21	34	55	27	36	63	21	33	54	21	32	53	-17%
College of Engineering	12	60	72	17	76	93	12	79	91	10	69	79	6	58	64	-11%
College of Health	90	58	148	87	62	149	91	73	164	102	75	177	105	62	167	13%
Community & Technical College	56	86	142	54	83	137	56	92	148	62	82	144	45	81	126	-11%
Consortium Library		46	46		33	33		31	31		27	27		30	30	-35%
Chancellor's Office		7	7		5	5		4	4		4	4		6	6	-14%
Provost Operations	66	62	128	68	54	122	54	73	127	42	57	99	25	48	73	-43%
VC, Administrative Operation		220	220		158	158		132	132	4	130	134		122	122	-45%
VC, Student Affairs		152	152		179	179		187	187		174	174		139	139	-9%
VC, University Advancement		14	14		12	12					2	2				-100%
Anchorage Campus Total	402	894	1,296	386	846	1,232	363	827	1,190	363	776	1,139	280	718	998	-23%
Kenai Peninsula College	88	68	156	82	54	136	87	58	145	81	54	135	83	46	129	-17%
Kodiak College	24	9	33	19	10	29	26	12	38	23	14	37	16	9	25	-24%
Matanuska-Susitna College	80	36	116	82	16	98	81	20	101	72	23	95	59	23	82	-29%
Prince William Sound College	31	18	49	23	14	37	22	19	41	25	15	40	26	17	43	-12%
UAA Total	625	1,025	1,650	592	940	1,532	579	936	1,515	564	882	1,446	464	813	1,277	-23%

Source: The data in this section (Tables 4.01 - 4.07) is extracted from Banner Statewide H Tables at fall freeze.

Note: Faculty members in this report are based on Human Resources EEO classification.

Employee Characteristics by Campus, Fall 2019

Table 4.02

	Anchorage	Kenai	Kodiak	Mat-Su	PW Sound	UAA Total
Total	2,282	226	55	139	80	2,782
Job Classification						
Executive	13	1	1	1	1	17
Faculty	762	115	29	81	33	1,020
Professional	461	34	5	7	14	521
Paraprofessional	239	27	15	22	10	313
Clerical	124	15	2	11	3	155
Skilled	38	3	1	3	1	46
Maintenance	72	11	2	3	13	101
Graduate Assistant	38					38
Student Assistant	535	20		11	5	571
Gender						
Female	1,329	131	38	83	37	1,618
Male	953	95	17	56	43	1,164
Race/Ethnicity						
African American	73			2		75
AK Native & Am Indian	84	11	1	2	1	99
AK Native & Am Indian Multirace	113	8	2	5	4	132
Asian	109	5	2	1	1	118
Hispanic	111	12	1	7	2	133
Hispanic Multirace	13					13
Native Hawaiian/Pacific Island	39	1	1		1	42
White	1,558	180	45	116	69	1,968
Multirace	70		1	3	1	75
Non Resident Alien	54					54
Not Reported	58	9	2	3	1	73
Workload						
Full-time	1,220	80	28	56	32	1,416
Part-time	1,062	146	27	83	48	1,366
Administrative Unit						
College of Arts & Sciences	453					453
College of Business & Public Policy	133					133
College of Engineering	114					114
College of Health	416					416
Community & Technical College	225					225
Consortium Library	78					78
Chancellor's Office	51					51
Provost Operations	200					200
VC, Administrative Operation	334					334
VC, Student Affairs	260					260
VC, University Advancement	18					18
Community Campus' Total		226	55	139	80	500

Regular and Term Employee Characteristics by Campus, Fall 2019

Table 4.02a

	Anchorage	Kenai	Kodiak	Mat-Su	PW Sound	UAA Total
Total	1,284	97	30	57	37	1,505
Job Classification						
Executive	13	1	1	1	1	17
Faculty	481	32	13	22	7	555
Professional	438	28	5	7	13	491
Paraprofessional	219	20	6	14	10	269
Clerical	66	9	2	8	2	87
Skilled	38	3	1	3	1	46
Maintenance	29	4	2	2	3	40
Gender						
Female	740	57	19	32	19	867
Male	544	40	11	25	18	638
Race/Ethnicity						
African American	41					41
AK Native & Am Indian	47	4	1		1	53
AK Native & Am Indian Multirace	50	4	1	3	1	59
Asian	59	3			1	63
Hispanic	56	3	1	3	1	64
Hispanic Multirace	3					3
Native Hawaiian/Pacific Island	10	1	1			12
White	935	76	24	46	32	1,113
Multirace	24		1	2	1	28
Non Resident Alien	19					19
Not Reported	40	6	1	3		50
Workload						
Full-time	1,213	80	28	56	32	1,409
Part-time	71	17	2	1	5	96
Administrative Unit						
College of Arts & Sciences	235					235
College of Business & Public Policy	80					80
College of Engineering	50					50
College of Health	249					249
Community & Technical College	99					99
Consortium Library	48					48
Chancellor's Office	45					45
Provost Operations	127					127
VC, Administrative Operation	212					212
VC, Student Affairs	121					121
VC, University Advancement	18					18
Community Campus' Total		97	30	57	37	221

Temporary Employee Characteristics by Campus, Fall 2019

Table 4.02b

	Anchorage	Kenai	Kodiak	Mat-Su	PW Sound	UAA Total
Total	998	129	25	82	43	1,277
Job Classification						
Faculty	281	83	16	59	26	465
Professional	23	6			1	30
Paraprofessional	20	7	9	8		44
Clerical	58	6		3	1	68
Maintenance	43	7		1	10	61
Graduate Assistant	38					38
Student Assistant	535	20		11	5	571
Gender						
Female	589	74	19	51	18	751
Male	409	55	6	31	25	526
Race/Ethnicity						
African American	32			2		34
AK Native & Am Indian	37	7		2		46
AK Native & Am Indian Multirace	63	4	1	2	3	73
Asian	50	2	2	1		55
Hispanic	55	9		4	1	69
Hispanic Multirace	10					10
Native Hawaiian/Pacific Island	29				1	30
White	623	104	21	70	37	855
Multirace	46			1		47
Non Resident Alien	35					35
Not Reported	18	3	1		1	23
Workload						
Full-time	7					7
Part-time	991	129	25	82	43	1,270
Administrative Unit						
College of Arts & Sciences	218					218
College of Business & Public Policy	53					53
College of Engineering	64					64
College of Health	167					167
Community & Technical College	126					126
Consortium Library	30					30
Chancellor's Office	6					6
Provost Operations	73					73
VC, Administrative Operation	122					122
VC, Student Affairs	139					139
Community Campus' Total		129	25	82	43	279

Regular and Term Faculty Characteristics by Campus, Fall 2019

Table 4.03

	Anchorage	Kenai	Kodiak	Mat-Su	PW Sound	UAA Total
Total	481	32	13	22	7	555
Faculty Classification						
ACCFT and UACAD Faculty	420	31	13	20	7	491
Non Rep Faculty 12 Month	42			1		43
Non Rep Faculty Less 12 Month	19	1		1		21
Academic Rank						
Professor	129	5	1	3		138
Associate Professor	128	11	6	6	2	153
Assistant Professor	174	16	6	12	4	212
Instructor	50			1	1	52
Tenure Status						
Tenured	254	17	7	9		287
Non-Tenure Track	227	15	6	13	7	268
Contract Type						
Bipartite	226	31	13	21	7	298
Tripartite	226	1				227
Not Assigned	29			1		30
Workload						
Full-time	460	31	13	22	7	533
Part-time	21	1				22
Gender						
Female	253	13	9	10		285
Male	228	19	4	12	7	270
Race						
African American	10					10
AK Native & Am Indian	20					20
AK Native & Am Indian Multirace	13	1		1		15
Asian	30	2				32
Hispanic	12					12
Native Hawaiian/Pacific Island	2					2
White	362	27	12	21	7	429
Multirace	3					3
Non Resident Alien	15					15
Not Reported	14	2	1			17
Highest Degree						
Doctorate	285	11	5	13	2	316
Master's	143	17	8	6	2	176
Bachelor	22	1		1		24
Associate	7			2		9
Licensure/Endorsement	1					1
Unknown	23	3			3	29

Regular and Term Faculty Characteristics by Campus, Fall 2019

Table 4.03

	Anchorage	Kenai	Kodiak	Mat-Su	PW Sound	UAA Total
Administrative Unit						
College of Arts & Sciences	164					164
College of Business & Public Policy	52					52
College of Engineering	34					34
College of Health	128					128
Community & Technical College	60					60
Consortium Library	24					24
Provost Operations	19					19
Community Campus' Total		32	13	22	7	74

Student Credit Hours Generated by Regular and Term Faculty, Fall 2019

Table 4.04

	050-099 Developmental	100-299 Lower Division	300-499 Upper Division	500-599 Professional	600-699 Graduate	TOTAL
Anchorage Campus						
Arts & Sciences	159	22,666	9,310	68	1,133	33,336
Business & Public Policy		4,890	3,990		621	9,501
Engineering		2,021	3,374		307	5,702
Health		7,439	5,988	12	1,917	15,356
Community & Technical	1,128	13,104	1,122			15,354
University Honors College		111	20			131
Anchorage Campus Total	1,287	50,231	23,804	80	3,978	79,380
Kenai Peninsula College		5,004	270			5,274
Kodiak College	33	1,660				1,693
Matanuska-Susitna College	60	3,491	54			3,605
Prince William Sound College	6	793				799
UAA Total	1,386	61,179	24,128	80	3,978	90,751

Student Credit Hours Generated by Adjunct Faculty, Fall 2019

Table 4.05

	050-099 Developmental	100-299 Lower Division	300-499 Upper Division	500-599 Professional	600-699 Graduate	TOTAL
Anchorage Campus						
Arts & Sciences		3,479	271	4,183	244	8,177
Business & Public Policy		880	844		144	1,868
Engineering		81	216		15	312
Health		1,265	375		146	1,786
Community & Technical	490	4,688	538	126		5,842
University Honors College		66	30			96
Anchorage, Other	48	1,196				1,244
Anchorage Campus Total	538	11,655	2,274	4,309	549	19,325
Kenai Peninsula College	537	4,718	226	42		5,523
Kodiak College	55	1,066				1,121
Matanuska-Susitna College	273	5,822				6,095
Prince William Sound College		1,826				1,826
UAA Total	1,403	25,087	2,500	4,351	549	33,890

Source: The data regarding student information is extracted from Banner Statewide DSD data system at fall semester closing freeze and the data for faculty information is from Banner Statewide H Tables at fall freeze.

Note: Student Credit Hours are based on course level, representing credit courses at the 050 level and above, and do not include auditors.

Number of Course Sections Taught by Regular and Term Faculty, Fall 2019

Table 4.06

	050-099 Developmental	100-299 Lower Division	300-499 Upper Division	500-599 Professional	600-699 Graduate	TOTAL
Anchorage Campus						
Arts & Sciences	1	251	233	3	99	587
Business & Public Policy		41	53		15	109
Engineering		49	87		33	169
Health		219	142	1	60	422
Community & Technical	16	225	32			273
University Honors College		3	3			6
Anchorage Campus Total	17	788	550	4	207	1,566
Kenai Peninsula College		113	15			128
Kodiak College	2	53				55
Matanuska-Susitna College	1	77	3			81
Prince William Sound College	1	27				28
UAA Total	21	1,058	568	4	207	1,858

Number of Course Sections Taught by Adjunct Faculty, Fall 2019

Table 4.07

	050-099 Developmental	100-299 Lower Division	300-499 Upper Division	500-599 Professional	600-699 Graduate	TOTAL
Anchorage Campus						
Arts & Sciences		134	15	225	18	392
Business & Public Policy		11	11		4	26
Engineering		5	3		2	10
Health		49	8		9	66
Community & Technical	6	69	18	8		101
University Honors College		2	1			3
Anchorage, Other	1	24				25
Anchorage Campus Total	7	294	56	233	33	623
Kenai Peninsula College	10	124	8	3		145
Kodiak College	2	34				36
Matanuska-Susitna College	5	120				125
Prince William Sound College		45				45
UAA Total	24	617	64	236	33	974

Source: The data regarding student information is extracted from Banner Statewide DSD data system at Fall semester closing freeze and the data for faculty information is from Banner Statewide H Tables at fall freeze.

Note: Number of Course Sections includes credit course sections at the 050 level and above.

Finance, Grants, and Giving

Authorized State Appropriation Budget Fiscal Years 2016-2020

Table 5.01

	FY2016	FY2017	FY2018	FY2019	FY2020	% Change FY16-FY20 FY19-FY20	
	(in Thousands of \$)						
Anchorage Campus	107,884	100,166	98,523	103,085	92,595	-14.2%	-10.2%
Small Business Dev. Center	1,032	985	960	960	960	-7.0%	0.0%
Kenai Peninsula College	7,250	6,636	6,455	6,289	6,289	-13.2%	0.0%
Kodiak College	2,717	2,435	2,359	2,303	2,303	-15.2%	0.0%
Matanuska-Susitna College	5,204	4,869	4,708	4,569	4,569	-12.2%	0.0%
Prince William Sound College	3,298	2,787	2,760	2,667	2,667	-19.1%	0.0%
UAA Total	127,385	117,877	115,765	119,872	109,383	-14.1%	-8.8%

Total Authorized Budget Fiscal Years 2016-2020

Table 5.02

	FY2016	FY2017	FY2018	FY2019	FY2020	% Change FY16-FY20 FY19-FY20	
	(in Thousands of \$)						
Anchorage Campus	273,622	268,603	267,117	265,992	255,926	-6.5%	-3.8%
Small Business Dev. Center	3,178	3,010	3,685	3,685	3,685	15.9%	0.0%
Kenai Peninsula College	16,898	16,653	16,440	16,302	16,208	-4.1%	-0.6%
Kodiak College	6,134	5,921	5,839	5,600	5,564	-9.3%	-0.6%
Matanuska-Susitna College	11,525	12,291	13,340	13,315	13,381	16.1%	0.5%
Prince William Sound College	7,602	7,164	7,209	6,277	6,252	-17.8%	-0.4%
UAA Total	318,959	313,642	313,629	311,171	301,016	-5.6%	-3.3%

Source: UA Approved Operating and Capital Budgets (Yellowbook).

Actual State Appropriation Expenditures Fiscal Years 2015-2019

Table 5.03

	FY2015	FY2016	FY2017	FY2018	FY2019	% Change FY15-FY19 FY18-FY19	
	(in Thousands of \$)						
Anchorage Campus	113,901	108,421	100,738	98,445	102,729	-9.8%	4.4%
Small Business Dev. Center	1,056	965	941	960	960	-9.1%	0.0%
Kenai Peninsula College	7,708	7,256	6,635	6,462	6,309	-18.1%	-2.4%
Kodiak College	2,856	2,722	2,423	2,366	2,420	-15.3%	2.3%
Matanuska-Susitna College	5,464	5,211	4,877	4,714	4,652	-14.9%	-1.3%
Prince William Sound College	3,380	3,300	2,835	2,762	2,693	-20.3%	-2.5%
UAA Total	134,365	127,875	118,449	115,709	119,763	-10.9%	3.5%

Total Actual Expenditures Fiscal Years 2015-2019

Table 5.04

	FY2015	FY2016	FY2017	FY2018	FY2019	% Change FY15-FY19 FY18-FY19	
	(in Thousands of \$)						
Anchorage Campus	266,438	263,392	259,434	259,930	257,853	-3.2%	-0.8%
Small Business Dev. Center	2,420	2,289	3,035	3,005	2,511	3.8%	-16.4%
Kenai Peninsula College	15,727	13,914	15,393	13,838	13,621	-13.4%	-1.6%
Kodiak College	5,380	4,963	4,409	4,285	4,192	-22.1%	-2.2%
Matanuska-Susitna College	10,752	10,500	11,008	10,071	9,309	-13.4%	-7.6%
Prince William Sound College	5,798	5,442	5,831	5,277	5,245	-9.5%	-0.6%
UAA Total	306,516	300,500	299,110	296,405	292,732	-4.5%	-1.2%

Source: UA Approved Operating and Capital Budgets (Yellowbook).

Summary of UAA Expenditures by Functional Categories Fiscal Years 2016-2020

Table 5.05

Expenditures	(in Thousands of \$)										% Change	
	FY16	% Total	FY17	% Total	FY18	% Total	FY19	% Total	FY20	% Total	FY16-FY20	FY19-FY20
Unrestricted												
Instruction	102,765	34%	103,067	34%	100,587	34%	99,395	34%	89,028	33%	-13%	-10%
Research	4,559	2%	4,861	2%	4,326	1%	3,687	1%	3,370	1%	-26%	-9%
Public Service	5,844	2%	5,518	2%	4,962	2%	4,993	2%	4,925	2%	-16%	-1%
Academic Support	18,279	6%	16,887	6%	16,517	6%	18,260	6%	17,363	6%	-5%	-5%
Library	7,560	3%	6,981	2%	6,994	2%	6,781	2%	6,182	2%	-18%	-9%
Student Services	17,371	6%	17,143	6%	17,188	6%	17,478	6%	17,023	6%	-2%	-3%
Athletics	9,149	3%	7,782	3%	8,356	3%	8,029	3%	6,971	3%	-24%	-13%
Institutional Support	30,384	10%	32,498	11%	30,878	10%	30,908	11%	27,616	10%	-9%	-11%
Physical Plant	31,951	11%	33,395	11%	33,432	11%	30,455	10%	29,773	11%	-7%	-2%
Scholarships	-1,858	-1%	-1,474	0%	-2,249	-1%	-1,657	-1%	-1,917	-1%	3%	16%
Auxiliary			-96	0%	2	0%	1	0%	28	0%		2,467%
Unrestricted Total	226,004	75%	226,561	76%	220,994	75%	218,330	75%	200,363	74%	-11%	-8%
Match												
Instruction			226	0%	246	0%	333	0%	250	0%		-25%
Research			356	0%	307	0%	244	0%	450	0%		85%
Public Service			912	0%	918	0%	1,024	0%	1,206	0%		18%
Academic Support			96	0%	109	0%	172	0%	260	0%		51%
Scholarships			48	0%	66	0%	136	0%	140	0%		3%
Student Services			27	0%	-7	0%						
Institutional Support									722	0%		
Match Total			1,665	1%	1,639	1%	1,909	1%	3,029	1%		59%

Summary of UAA Expenditures by Functional Categories Fiscal Years 2016-2020

Table 5.05

Expenditures	(in Thousands of \$)										% Change	
	FY16	% Total	FY17	% Total	FY18	% Total	FY19	% Total	FY20	% Total	FY16-FY20	FY19-FY20
Restricted												
Instruction	6,485	2%	7,468	2%	6,941	2%	7,068	2%	5,175	2%	-20%	-27%
Research	11,187	4%	11,567	4%	12,808	4%	14,899	5%	15,778	6%	41%	6%
Public Service	10,806	4%	9,645	3%	10,261	3%	9,057	3%	9,244	3%	-14%	2%
Academic Support	958	0%	947	0%	763	0%	802	0%	818	0%	-15%	2%
Library	34	0%	104	0%	118	0%	131	0%	166	0%	389%	27%
Student Services	1,416	0%	1,195	0%	1,222	0%	1,403	0%	1,340	0%	-5%	-5%
Athletics	42	0%	52	0%	19	0%	23	0%	10	0%	-75%	-54%
Institutional Support	101	0%	32	0%	30	0%	87	0%	1,276	0%	1169%	1361%
Physical Plant	167	0%			92	0%	431	0%	13	0%	-92%	-97%
Scholarships	15,975	5%	14,943	5%	16,198	5%	15,618	5%	16,122	6%	1%	3%
Total Restricted	47,169	16%	45,952	15%	48,452	16%	49,519	17%	49,942	18%	6%	1%
Auxiliary Total	25,432	8%	22,745	8%	22,817	8%	19,967	7%	15,592	6%	-39%	-22%
Designated												
Instruction									24	0%		
Research							32	0%	82	0%		162%
Physical Plant					56	0%	65	0%	4	0%		-94%
Scholarships	2,113	1%	2,186	1%	2,128	1%	2,076	1%	1,834	1%	-13%	-12%
Designated Total	2,113	1%	2,186	1%	2,183	1%	2,173	1%	1,945	1%	-8%	-10%
UAA TOTAL	300,719	100%	299,110	100%	296,085	100%	291,898	100%	270,870	100%	-10%	-7%

Source: University of Alaska 'S' reports.

Note: Match funds were separated out of the unrestricted funds and into their own category in FY17.

Authorized UAA Expenditure Budget (Unrestricted)
Instruction Component Only, Fiscal Years 2016-2020

Table 5.06

	(in Thousands of \$)					% Change	
	FY2016	FY2017	FY2018	FY2019	FY2020	FY16-FY20	FY19-FY20
Anchorage Campus							
College of Arts & Sciences	33,497	32,140	33,641	24,763	21,791	-35%	-12%
College of Business & Public Policy	9,985	10,091	9,832	9,618	9,062	-9%	-6%
College of Engineering	6,921	7,448	8,296	7,707	5,853	-15%	-24%
College of Health	20,664	22,395	20,845	20,676	21,685	5%	5%
Community & Technical College	15,129	14,750	11,365	11,834	11,699	-23%	-1%
Provost Operations	1,808	3,212	5,637	6,742	5,728	217%	-15%
Anchorage Campus Total	88,005	90,036	89,617	81,339	75,818	-14%	-7%
Kenai Peninsula College	8,009	7,974	7,910	7,749	8,299	4%	7%
Kodiak College	2,276	2,145	1,986	2,037	1,876	-18%	-8%
Matanuska-Susitna College	5,886	5,776	5,430	5,666	5,768	-2%	2%
Prince William Sound College	1,615	1,305	1,392	1,589	1,690	5%	6%
UAA Total	105,792	107,236	106,334	98,380	93,451	-12%	-5%

Source: UAA Budget Office.

Notes:

1. Includes Academic Units only and does not include central administration, Chancellor, or information technology services units.
2. Updated using FY19 Revenue and Expense TOAD Report sorted by Instruction NACUBO for Accepted Budget for Expense.

Summary of UAA Revenue Received Fiscal Years 2016-2020

Table 5.07

Revenue	(in Thousands of \$)										% Change	
	FY16	% Total	FY17	% Total	FY18	% Total	FY19	% Total	FY20	% Total	FY16-FY20	FY19-FY20
Unrestricted												
General Funds	131,898	43%	123,134	42%	119,933	41%	123,555	42%	113,094	42%	-14%	-8%
Net Tuition/Fees	76,662	25%	76,727	26%	78,575	27%	76,566	26%	70,093	26%	-9%	-8%
UA Intra-Agency Rcpt.	9,772	3%	7,292	2%	7,114	2%	6,647	2%	6,250	2%	-36%	-6%
UA Receipts	9,206	3%	9,404	3%	10,209	3%	8,425	3%	7,399	3%	-20%	-12%
Indirect Cost Recov.	4,376	1%	3,994	1%	4,381	1%	4,572	2%	4,664	2%	7%	2%
CIP Receipts	439	0%	442	0%							-100%	
Unrestricted Total	232,352	76%	220,993	75%	220,212	75%	219,764	75%	201,500	74%	-13%	-8%
Match Total			1,777	1%	1,500	1%	2,442	1%	3,455	1%		41%
Restricted												
Federal Receipts	29,487	10%	27,808	9%	29,872	10%	30,653	10%	34,535	13%	17%	13%
UA Intra-Agency Rcpt.									1	0%		
State Intra-Agency Rcpt.	7,247	2%	6,309	2%	6,193	2%	6,478	2%	5,863	2%	-19%	-9%
Interest Income	1	0%	1	0%	2	0%	3	0%	1	0%	0%	-75%
UA Receipts	10,439	3%	11,838	4%	12,310	4%	12,420	4%	9,676	4%	-7%	-22%
Restricted Total	47,174	15%	45,957	16%	48,377	16%	49,554	17%	50,076	18%	6%	1%
Auxiliary												
Dorm, Food	25,751	8%	21,959	7%	22,340	8%	20,998	7%	14,967	6%	-42%	-29%
Indirect Cost Recov.							3	0%	1	0%		-76%
UA Receipts	136	0%	96	0%	67	0%	19	0%	18	0%	-87%	-7%
Intra-Agency Rcpts.	-403	0%	9	0%	15	0%	9	0%	7	0%	-102%	-23%
Auxiliary Total	25,484	8%	22,064	8%	22,422	8%	21,029	7%	14,992	6%	-41%	-29%
Designated Total	2,113	1%	2,186	1%	2,183	1%	2,173	1%	1,945	1%	-8%	-11%
UAA TOTAL	307,124	100%	292,977	100%	294,694	100%	294,962	100%	271,968	100%	-11%	-8%

Source: University of Alaska "S" reports for UAA Appropriation.

Notes:

- Auxiliary enterprises include Anchorage Campus Bookstore, Anchorage Housing & Dining Services, Anchorage Health Center, AK Airlines Arena, Anchorage Parking, Kenai Bookstore, Kodiak Bookstore, Kenai Health Center, Kenai Housing, Mat-Su Bookstore, PWSC Housing, and PWSC Fitness Center.
- Unrestricted UA Receipts balance is after reversal of FY18 Unreserved Fund Balance \$16.4M.
- Match funds were separated out of the unrestricted funds and into their own category in FY17.

Research Grant Awards by UAA Units and Fund Agencies Fiscal Year 2020

Table 5.08

	Academic Support		Institutional Support		Instruction		Public Service		Research		Scholarship/ Fellowship		Student Services		TOTAL	
	N	\$	N	\$	N	\$	N	\$	N	\$	N	\$	N	\$	N	\$
College of Arts & Sciences																
Federal Agencies									30	4,073,586	1	46,000			31	4,119,586
Private Funding Sources	2	26,200			2	196,600	2	13,700	15	736,440					21	972,940
Alaska State Agencies									8	506,067					8	506,067
Total	2	26,200			2	196,600	2	13,700	53	5,316,093	1	46,000			60	5,598,593
College of Business & Public Policy																
Federal Agencies							2	650,000	4	1,651,130					6	2,301,130
Local Government							1	4,071	1	4,962					2	9,033
Private Funding Sources	2	224,312	1	1,850	2	39,537	2	34,637	18	1,132,239					25	1,432,575
Alaska State Agencies									5	270,360					5	270,360
Total	2	224,312	1	1,850	2	39,537	5	688,708	28	3,058,691					38	4,013,098
College of Engineering																
Private Funding Sources	1	1,000	2	6,375	4	168,700	3	126,014	7	404,396					17	706,485
Alaska State Agencies									3	377,051					3	377,051
Total	1	1,000	2	6,375	4	168,700	3	126,014	10	781,447					20	1,083,536
College of Health																
Federal Agencies					2	613,070	3	283,000	3	389,190					8	1,285,260
Private Funding Sources			2	3,630	4	255,318	13	1,995,666	10	390,133	1	11,400	2	5,830	32	2,661,977
Alaska State Agencies					4	295,662	30	4,393,153	10	788,202					44	5,477,017
Total			2	3,630	10	1,164,050	46	6,671,819	23	1,567,525	1	11,400	2	5,830	84	9,424,254
Community & Technical College																
Private Funding Sources					1	140,000	1	45,500					1	15,187	3	200,687
Consortium Library																
Federal Agencies	1	474,908					1	1,320,359							2	1,795,267
Private Funding Sources			2	100,801			1	40,433							3	141,234
Total	1	474,908	2	100,801			2	1,360,792							5	1,936,501

Research Grant Awards by UAA Units and Fund Agencies Fiscal Year 2020

Table 5.08

	Academic Support		Institutional Support		Instruction		Public Service		Research		Scholarship/Fellowship		Student Services		TOTAL	
	N	\$	N	\$	N	\$	N	\$	N	\$	N	\$	N	\$	N	\$
Chancellor Operation																
Federal Agencies							7	2,775,933	8	1,471,981					15	4,247,914
Local Government							2	128,500							2	128,500
Private Funding Sources							6	256,498							6	256,498
Alaska State Agencies							2	74,817							2	74,817
Total							17	3,235,748	8	1,471,981					25	4,707,729
Provost Operations																
Federal Agencies	1	899,981			1	600,000			2	333,915	3	200,015			7	2,033,911
Local Government							7	602,000							7	602,000
Private Funding Sources					2	20,000	2	200,000			3	45,000	1	10,000	8	275,000
Total	1	899,981			3	620,000	9	802,000	2	333,915	6	245,015	1	10,000	22	2,910,911
Student Affairs																
Federal Agencies													2	575,074	2	575,074
Private Funding Sources							1	28,500							1	28,500
Alaska State Agencies													1	20,252	1	20,252
Total							1	28,500					3	595,326	4	623,826
University Advancement																
Private Funding Sources			1	17,091											1	17,091
VCAS Athletics/Sport Center																
Private Funding Sources	1	40,560													1	40,560
Central Managed Accounts																
Private Funding Sources							1	1,500	1	2,500					2	4,000
Alaska State Agencies							1	186,086							1	186,086
Total							2	187,586	1	2,500					3	190,086

Research Grant Awards by UAA Units and Fund Agencies Fiscal Year 2020

Table 5.08

	Academic Support		Institutional Support		Instruction		Public Service		Research		Scholarship/ Fellowship		Student Services		TOTAL	
	N	\$	N	\$	N	\$	N	\$	N	\$	N	\$	N	\$	N	\$
VCAS Operations																
Federal Agencies			1	2,722,592											1	2,722,592
Alaska State Agencies			1	248,883											1	248,883
Total			2	2,971,475											2	2,971,475
Kenai Peninsula College																
Local Government					1	847,186									1	847,186
Private Funding Sources					1	274	2	66,552							3	66,825
Alaska State Agencies							1	194,544							1	194,544
Total					2	847,460	3	261,095							5	1,108,555
Kodiak College																
Alaska State Agencies					1	115,145									1	115,145
Prince William Sound College																
Federal Agencies													1	11,188	1	11,188
Alaska State Agencies					4	208,930									4	208,930
Total					4	208,930							1	11,188	5	220,118
UAA Total																
Federal Agencies	2	1,374,889	1	2,722,592	3	1,213,070	13	5,029,292	47	7,919,802	4	246,015	3	586,262	73	19,091,921
Local Government					1	847,186	10	734,571	1	4,962					12	1,586,719
Private Funding Sources	6	292,072	8	129,747	16	820,430	34	2,809,000	51	2,665,708	4	56,400	4	31,017	123	6,804,374
Alaska State Agencies			1	248,883	9	619,737	34	4,848,600	26	1,941,680			1	20,252	71	7,679,152
Total	8	1,666,961	10	3,101,222	29	3,500,423	91	13,421,462	125	12,532,152	8	302,415	8	637,531	279	35,162,165

Source: UAA Office of Sponsored Programs compiled by UAA Office of Institutional Research.

Notes:

1. Provost Operations awards are from the Alaska Native Science and Engineering Program and the Business Enterprise Institute which report directly to the Chancellor.
2. Significant staffing changes may have led to potential data inconsistencies during FY20.
3. N = number of grants awarded.
4. \$ = amount awarded.

Grant Awards by UAA Units and Functional Categories

Fiscal Years 2016-2020

Table 5.09

	FY2016		FY2017		FY2018		FY2019		FY2020	
	N	\$	N	\$	N	\$	N	\$	N	\$
College of Arts & Sciences										
Academic Support	4	302,091	1	22,000	2	19,080			2	26,200
Institutional Support	3	133,920	4	156,230	1	124,000	2	755,000		
Instruction	5	671,158	6	801,416	6	187,841	3	182,212	2	196,600
Public Service	8	152,109	8	484,824	7	303,049	3	215,500	2	13,700
Research	61	6,365,619	45	6,140,876	60	5,644,270	63	7,183,601	53	5,316,093
Scholarship/Fellowship	1	6,200							1	46,000
Student Services	1	10,000								
Total	83	7,641,097	64	7,605,346	76	6,278,240	71	8,336,313	60	5,598,593
College of Business & Public Policy										
Academic Support	3	451,501	1	229,974	3	48,549	1	218,000	2	224,312
Institutional Support			2	594,829			1	618	1	1,850
Instruction	7	1,138,184	4	75,714	4	289,690	4	53,465	2	39,537
Public Service	8	879,826	5	357,152	5	146,320	9	768,941	5	688,708
Research	34	2,365,141	34	2,708,158	31	3,004,052	31	2,262,485	28	3,058,691
Total	52	4,834,653	46	3,965,827	43	3,488,611	46	3,303,508	38	4,013,098
College of Engineering										
Academic Support					2	11,258	1	6,500	1	1,000
Institutional Support	3	105,640	3	71,770	4	6,257	7	331,661	2	6,375
Instruction	1	877,404			1	655,140	1	30,000	4	168,700
Public Service	2	15,099	5	333,583	3	84,000	4	130,140	3	126,014
Research	15	3,209,818	10	558,251	16	1,111,571	11	864,260	10	781,447
Student Services					2	10,466	1	9,800		
Total	21	4,207,961	18	963,604	28	1,878,692	25	1,372,361	20	1,083,536
College of Health										
Academic Support	3	112,500	4	235,606	3	81,945	3	110,866		
Institutional Support	5	70,650	4	75,476	4	102,964	4	149,511	2	3,630
Instruction	12	2,311,879	10	1,895,613	9	2,672,566	15	2,968,780	10	1,164,050
Public Service	45	5,634,978	41	5,508,053	37	5,463,205	43	6,376,822	46	6,671,819
Research	16	775,906	26	2,621,164	20	1,308,688	20	2,039,561	23	1,567,525
Scholarship/Fellowship	1	2,600	1	2,600	1	10,000			1	11,400
Student Services									2	5,830
Total	82	8,908,513	86	10,338,511	74	9,639,367	85	11,645,539	84	9,424,254
Community & Technical College										
Academic Support					1	50,000				
Institutional Support	2	24,794	4	85,078	2	38,384				
Instruction	3	221,902	1	15,920			1	15	1	140,000
Public Service	3	154,000	2	214,164	1	58,800	1	50,000	1	45,500
Student Services					1	5,966			1	15,187
Total	8	400,696	7	315,162	5	153,150	2	50,015	3	200,687

Grant Awards by UAA Units and Functional Categories Fiscal Years 2016-2020

Table 5.09

	FY2016		FY2017		FY2018		FY2019		FY2020	
	N	\$	N	\$	N	\$	N	\$	N	\$
Consortium Library										
Academic Support									1	474,908
Institutional Support	2	100,801	2	100,858	2	100,860	2	103,875	2	100,801
Public Service	5	1,226,291	3	626,052	3	567,946	1	956,796	2	1,360,792
Research			1	37,174	2	689,845	1	185,574		
Total	7	1,327,092	6	764,084	7	1,358,651	4	1,246,245	5	1,936,501
Athletics/Sport Center										
Academic Support	1	46,905	1	51,300	1	50,034			1	40,560
Central Managed Accts.										
Public Service									2	187,586
Research									1	2,500
Total									3	190,086
VCAS Operations										
Institutional Support					1	250,000			2	2,971,475
Chancellor Operation										
Public Service	17	2,087,891	17	1,963,525	21	3,177,527	23	3,080,505	17	3,235,748
Research	5	1,250,532	5	803,019	11	2,512,200	9	2,700,944	8	1,471,981
Total	22	3,338,423	22	2,766,544	32	5,689,727	32	5,781,449	25	4,707,729
Provost Operations										
Academic Support	3	670,000	1	449,999	1	449,999	1	12,002	1	899,981
Institutional Support	1	20,691	1	700	1	10,000				
Instruction	5	2,511,600	6	3,266,483	6	1,279,000	8	5,415,000	3	620,000
Public Service	14	903,200	10	1,294,205	19	1,447,635	15	1,063,500	9	802,000
Research	2	1,288,481	3	2,530,046	5	4,157,674	4	3,626,777	2	333,915
Scholarship/Fellowship	5	1,457,000	6	503,000	6	289,000	6	429,985	6	245,015
Student Services							1	5,000	1	10,000
Total	30	6,850,972	27	8,044,433	38	7,633,308	35	10,552,264	22	2,910,911
Senior Vice Provost										
Academic Support	1	6,000								
Public Service	2	6,683	1	5,099	1	4,900	1	3,325		
Research	1	2,000	1	5,000	1	5,800	1	5,000		
Total	4	14,683	2	10,099	2	10,700	2	8,325		
Student Affairs										
Academic Support			1	20,500						
Institutional Support			2	67,783						
Public Service	2	52,695	1	66,795	1	20,000			1	28,500
Student Services	3	578,186	2	595,032	5	873,682	5	870,812	3	595,326
Total	5	630,881	6	750,110	6	893,682	5	870,812	4	623,826
University Advancement										
Institutional Support	1	30,000	1	40,000			3	242,641	1	17,091

Grant Awards by UAA Units and Functional Categories Fiscal Years 2016-2020

Table 5.09

	FY2016		FY2017		FY2018		FY2019		FY2020	
	N	\$	N	\$	N	\$	N	\$	N	\$
Kenai Peninsula College										
Academic Support	1	1,380	1	1,050	1	2,409				
Institutional Support	1	10,000	1	15,000	1	40,453				
Instruction	4	993,176	2	175,803	2	987,901	2	984,952	2	847,460
Public Service	3	29,534	2	38,284	2	43,548	2	9,451	3	261,095
Research	1	174,336								
Student Services			1	779,958						
Total	10	1,208,427	7	1,010,095	6	1,074,311	4	994,403	5	1,108,555
Kodiak College										
Academic Support	1	399,877								
Institutional Support	1	9,614			1	5,164				
Instruction	2	296,902	1	97,557	2	448,909	1	98,804	1	115,145
Student Services					1	10,000				
Total	4	706,393	1	97,557	4	464,073	1	98,804	1	115,145
Matanuska-Susitna College										
Instruction	1	59,051	1	77,294						
Student Services	2	200,333								
Total	3	259,384	1	77,294						
Prince William Sound College										
Academic Support	1	14,850								
Institutional Support	2	11,316	2	89,300	2	30,959	1	14,250		
Instruction	3	165,065	2	139,755	5	182,284	6	733,215	4	208,930
Public Service	2	38,425					1	11,400		
Student Services	1	17,000	1	80,000			1	30,000	1	11,188
Total	9	246,656	5	309,055	7	213,243	9	788,865	5	220,118
UAA Total										
Academic Support	18	2,005,104	10	1,010,429	14	713,274	6	347,368	8	1,666,961
Institutional Support	21	517,426	26	1,297,023	19	709,042	20	1,597,555	10	3,101,222
Instruction	43	9,246,322	33	6,545,555	35	6,703,331	41	10,466,443	29	3,500,423
Public Service	111	11,180,732	95	10,891,735	100	11,316,929	103	12,666,380	91	13,421,462
Research	135	15,431,833	125	15,403,689	146	18,434,100	140	18,868,202	125	12,532,152
Scholarship/Fellowship	7	1,465,800	7	505,600	7	299,000	6	429,985	8	302,415
Student Services	7	805,519	4	1,454,990	9	900,114	8	915,612	8	637,531
Total	342	40,652,736	300	37,109,020	330	39,075,789	324	45,291,544	279	35,162,165

Source: UAA Office of Sponsored Programs compiled by UAA Office of Institutional Research.

Notes:

1. Significant staffing changes may have led to potential data inconsistencies during FY20.
2. N = number of grants awarded.
3. \$ = amount awarded.

Research Grant Proposal Submissions by UAA Units and Fund Agencies Fiscal Year 2020

Table 5.10

	Institutional Support		Instruction		Public Service		Research		Scholarship/ Fellowship		Student Services		TOTAL	
	N	\$	N	\$	N	\$	N	\$	N	\$	N	\$	N	\$
College of Arts & Sciences														
Federal Agencies			1	972,983	2	589,899	33	18,302,760	4	497,257			40	20,362,899
Local Government							1	900					1	900
Private Funding Sources			3	67,206	2	63,944	26	5,633,165	1	50,000			32	5,814,315
Alaska State Agencies							7	406,460					7	406,460
Total			4	1,040,189	4	653,843	67	24,343,285	5	547,257			80	26,584,574
College of Business & Public Policy														
Federal Agencies							13	4,816,477					13	4,816,477
Local Government					1	3,499							1	3,499
Private Funding Sources			1	2,887	4	195,255	7	647,384					12	845,526
Alaska State Agencies							4	352,903					4	352,903
Total			1	2,887	5	198,754	24	5,816,764					30	6,018,405
College of Engineering														
Federal Agencies					2	81,731	4	2,281,183					6	2,362,914
Private Funding Sources			3	151,200	1	2,014	11	1,860,362			1	1,911	16	2,015,488
Alaska State Agencies							3	465,416					3	465,416
Total			3	151,200	3	83,745	18	4,606,961			1	1,911	25	4,843,818
College of Health														
Federal Agencies			2	295,449	2	180,000	8	4,537,483					12	5,012,932
Local Government					1	24,124	3	292,878					4	317,002
Private Funding Sources	1	996	2	14,628	14	4,242,984	19	977,275	1	13,300	1		38	5,249,183
Alaska State Agencies	1	136,559	3	211,707	29	6,681,471	8	572,678					41	7,602,415
Total	2	137,555	7	521,784	46	11,128,579	38	6,380,314	1	13,300	1		95	18,181,532

Research Grant Proposal Submissions by UAA Units and Fund Agencies Fiscal Year 2020

Table 5.10

	Institutional Support		Instruction		Public Service		Research		Scholarship/ Fellowship		Student Services		TOTAL	
	N	\$	N	\$	N	\$	N	\$	N	\$	N	\$	N	\$
Community & Technical College														
Private Funding Sources					1	45,500							1	45,500
VCAS Operations														
Federal Agencies	1	2,722,592											1	2,722,592
Alaska State Agencies	1	248,883			1	232,822							2	481,705
Total	2	2,971,475			1	232,822							3	3,204,297
Chancellor Operation														
Federal Agencies					8	3,246,933	8	892,496					16	4,139,429
Local Government					1	125,000							1	125,000
Private Funding Sources					4	117,015							4	117,015
Alaska State Agencies					2	131,765	1	49,832					3	181,597
Total					15	3,620,713	9	942,328					24	4,563,041
Provost Operations														
Federal Agencies	2	3,236,099					2	143,255					4	3,379,354
Local Government					6	584,000							6	584,000
Private Funding Sources			4	524,083	2	68,000			1	5,000			7	597,083
Alaska State Agencies							1	83,915					1	83,915
Total	2	3,236,099	4	524,083	8	652,000	3	227,170	1	5,000			18	4,644,352
Student Affairs														
Private Funding Sources					1	28,500							1	28,500

Research Grant Proposal Submissions by UAA Units and Fund Agencies Fiscal Year 2020

Table 5.10

	Institutional Support		Instruction		Public Service		Research		Scholarship/ Fellowship		Student Services		TOTAL	
	N	\$	N	\$	N	\$	N	\$	N	\$	N	\$	N	\$
Kenai Peninsula College														
Local Government			1	847,186									1	847,186
Private Funding Sources			1	238									1	238
Alaska State Agencies					1	183,743							1	183,743
Total			2	847,424	1	183,743							3	1,031,167
Prince William Sound College														
Private Funding Sources			2	54,959									2	54,959
Alaska State Agencies			3	255,443									3	255,443
Total			5	310,402									5	310,402
UAA Total														
Federal Agencies	3	5,958,691	3	1,268,432	14	4,098,563	68	30,973,654	4	497,257			92	42,796,597
Local Government			1	847,186	9	736,623	4	293,778					14	1,877,587
Private Funding Sources	1	996	16	815,200	29	4,763,212	63	9,118,186	3	68,300	2	1,911	114	14,767,806
Alaska State Agencies	2	385,442	6	467,150	33	7,229,801	24	1,931,204					65	10,013,597
Total	6	6,345,129	26	3,397,968	85	16,828,199	159	42,316,822	7	565,557	2	1,911	285	69,455,587

Source: UAA Office of Sponsored Programs compiled by UAA Office of Institutional Research.

Notes:

1. Significant staffing changes may have led to potential data inconsistencies during FY20.
2. N = number of proposals submitted.
3. \$ = amount requested of the proposals.
4. Proposals with a status of "Withdrawn" have been excluded.

Grant Proposal Submissions by UAA Units and Functional Categories Fiscal Years 2016-2020

Table 5.11

	FY2016		FY2017		FY2018		FY2019		FY2020	
	N	\$	N	\$	N	\$	N	\$	N	\$
College of Arts & Sciences										
Academic Support	2	274,636								
Institutional Support	4	134,910	3	151,500	2	814,000	1	65,000		
Instruction	5	3,491,006	5	2,905,493	5	2,548,782	4	217,007	4	1,040,189
Public Service	10	1,306,756	15	1,104,415	11	762,112	6	526,211	4	653,843
Research	98	24,057,499	133	30,960,327	122	23,015,847	105	19,864,337	67	24,343,285
Scholarship/Fellowship	1	17,540	1	75,969	1	113,388	1	96,161	5	547,257
Student Services	2	2,732,591								
Total	122	32,014,938	157	35,197,704	141	27,254,129	117	20,768,716	80	26,584,574
College of Business & Public Policy										
Academic Support	1	20,000			1	20,000				
Institutional Support			2	594,829						
Instruction			1	1,016					1	2,887
Public Service	5	402,689	5	250,371	9	2,819,556	6	442,038	5	198,754
Research	53	9,997,063	45	5,168,002	53	7,222,079	52	10,169,373	24	5,816,764
Total	59	10,419,752	53	6,014,218	63	10,061,635	58	10,611,411	30	6,018,405
College of Engineering										
Academic Support					1	10,536				
Institutional Support	3	105,640	1	89,100	2	3,742	6	272,980		
Instruction					1	31,887	2	56,756	3	151,200
Public Service			4	141,395	1	7,000	2	7,496	3	83,745
Research	31	7,121,451	23	3,630,511	26	6,323,217	28	12,610,516	18	4,606,961
Student Services	1	42,000	1	42,000	2	10,466	1	42,000	1	1,911
Total	35	7,269,091	29	3,903,006	33	6,386,848	39	12,989,748	25	4,843,818
College of Health										
Academic Support	1	30,000	3	584,207	1	49,512				
Institutional Support	1	10,000			2	39,393	1	80,000	2	137,555
Instruction	6	5,371,232	7	1,296,450	12	2,935,988	16	3,041,792	7	521,784
Public Service	43	3,985,779	45	5,209,576	42	8,655,882	54	8,096,383	46	11,128,579
Research	33	10,102,100	33	6,780,596	42	5,097,856	46	6,281,950	38	6,380,314
Scholarship/Fellowship	1	2,600	2	12,600					1	13,300
Student Services									1	-
Total	85	19,501,711	90	13,883,429	99	16,778,631	117	17,500,125	95	18,181,532
Community & Technical College										
Academic Support					1	50,000				
Institutional Support	1	2,744	1	112,000	1	30,000				
Instruction	4	263,442					1	140,000		
Public Service	2	88,999	1	9,900					1	45,500
Student Services					1	877				
Total	7	355,185	2	121,900	3	80,877	1	140,000	1	45,500

Grant Proposal Submissions by UAA Units and Functional Categories Fiscal Years 2016-2020

Table 5.11

	FY2016		FY2017		FY2018		FY2019		FY2020	
	N	\$	N	\$	N	\$	N	\$	N	\$
Consortium Library										
Public Service	3	438,996	5	597,453	3	6,122,102	1	5,661,381		
Research			1	37,174	2	689,906				
Total	3	438,996	6	634,627	5	6,812,008	1	5,661,381		
VCAS Operations										
Institutional Support	1	15,000			1	250,000			2	2,971,475
Public Service									1	232,822
Research							1	514,305		
Total	1	15,000			1	250,000	1	514,305	3	3,204,297
Chancellor Operation										
Public Service	23	2,551,964	16	2,201,326	26	4,363,559	28	8,850,051	15	3,620,713
Research	7	831,000	22	7,911,734	17	4,052,116	15	4,807,575	9	942,328
Total	30	3,382,964	38	10,113,060	43	8,415,675	43	13,657,626	24	4,563,041
Provost Operations										
Academic Support	1	60,000					1	474,908		
Institutional Support	1	20,691	1	707	1	10,000			2	3,236,099
Instruction	5	2,340,200	6	5,247,430	4	890,000	8	8,382,002	4	524,083
Public Service	11	1,870,200	13	1,605,091	15	1,273,500	18	1,414,213	8	652,000
Research	4	3,538,481	2	59,391	5	2,255,994	3	196,295	3	227,170
Scholarship/Fellowship	6	1,060,000	4	703,000	3	44,000	5	667,000	1	5,000
Total	28	8,889,572	26	7,615,619	28	4,473,494	35	11,134,418	18	4,644,352
Senior Vice Provost										
Public Service	1	1,980								
Student Affairs										
Institutional Support			2	67,783						
Public Service			1	65,994					1	28,500
Student Services	3	4,306,533	4	3,900,050	1	67,034				
Total	3	4,306,533	7	4,033,827	1	67,034			1	28,500
University Advancement										
Institutional Support							3	242,641		

Grant Proposal Submissions by UAA Units and Functional Categories Fiscal Years 2016-2020

Table 5.11

	FY2016		FY2017		FY2018		FY2019		FY2020	
	N	\$	N	\$	N	\$	N	\$	N	\$
Kenai Peninsula College										
Institutional Support	1	10,000								
Instruction	3	957,248	4	1,162,110	1	163,253	3	1,247,772	2	847,424
Public Service	3	14,000	1	2,034	1	5,000	2	9,000	1	183,743
Student Services			1	779,958						
Total	7	981,248	6	1,944,102	2	168,253	5	1,256,772	3	1,031,167
Kodiak College										
Institutional Support	1	9,614								
Instruction	2	291,287	1	97,557	2	446,581	1	98,804		
Student Services					1	10,000				
Total	3	300,901	1	97,557	3	456,581	1	98,804		
Matanuska-Susitna College										
Instruction			1	77,294						
Student Services	2	196,972								
Total	2	196,972	1	77,294						
Prince William Sound College										
Academic Support	2	19,775								
Institutional Support	4	71,517	1	64,195						
Instruction	2	90,169	3	8,431,577	9	2,873,036	5	577,131	5	310,402
Public Service	3	49,225	1	15,533						
Research					1	984,142	1	998,000		
Student Services	1	17,000	2	80,000			2	89,694		
Total	12	247,686	7	8,591,305	10	3,857,178	8	1,664,825	5	310,402
UAA Total										
Academic Support	7	404,411	3	584,207	4	130,048	1	474,908		
Institutional Support	17	380,116	11	1,080,114	9	1,147,135	11	660,621	6	6,345,129
Instruction	27	12,804,584	28	19,218,927	34	9,889,526	40	13,761,264	26	3,397,968
Public Service	104	10,710,588	107	11,203,088	108	24,008,711	118	25,006,773	85	16,828,199
Research	226	55,647,594	259	54,547,735	268	49,641,157	251	55,442,351	159	42,316,822
Scholarship/Fellowship	8	1,080,140	7	791,569	4	157,388	6	763,161	7	565,557
Student Services	9	7,295,096	8	4,802,008	5	88,377	3	131,694	2	1,911
Total	398	88,322,529	423	92,227,648	432	85,062,342	429	96,240,772	285	69,455,587

Source: UAA Office of Sponsored Programs compiled by UAA Office of Institutional Research.

Notes:

1. Significant staffing changes may have led to potential data inconsistencies during FY20.
2. N = number of proposals submitted.
3. \$ = amount requested of the proposals.
4. Proposals with a status of "Withdrawn" have been excluded.

Average Dollars Contributed per Alumni Donor University of Alaska Anchorage

Table 5.12

Fiscal Year	Undergraduate Alumni	# of Alumni Donors	% Total Alumni Donors	Dollars Contributed	\$ per Donor (Ave. Gift Amount)	Minimum Donation	Maximum Donation
1997 - 98	13,633	28	0.2%	\$3,358	\$120	\$15	\$501
1998 - 99	14,175	25	0.2%	\$5,887	\$235	\$10	\$1,750
1999 - 00	15,000	38	0.3%	\$5,671	\$149	\$6	\$2,100
2000 - 01	15,800	24	0.2%	\$4,048	\$169	\$25	\$650
2001 - 02	17,375	24	0.1%	\$20,619	\$859	\$20	\$2,250
2002 - 03	15,586	171	1.1%	\$43,701	\$256	\$5	\$15,000
2003 - 04	16,080	541	3.4%	\$62,233	\$115	\$5	\$5,000
2004 - 05	24,510	937	3.8%	\$178,672	\$191	\$2	\$50,000
2005 - 06	27,854	671	2.4%	\$83,781	\$125	\$2	\$6,000
2006 - 07	28,264	1,471	5.2%	\$220,529	\$150	\$1	\$26,995
2007 - 08	30,789	1,864	6.1%	\$247,620	\$133	\$1	\$8,666
2008 - 09	33,314	1,632	4.9%	\$202,138	\$124	\$1	\$72,000
2009 - 10	35,839	2,132	5.9%	\$290,036	\$136	\$1	\$32,323
2010 - 11	39,289	2,036	5.2%	\$272,889	\$134	\$1	\$12,906
2011 - 12	41,211	2,042	5.0%	\$374,992	\$184	\$5	\$50,960
2012 - 13	40,083	2,144	5.3%	\$356,601	\$166	\$1	\$25,000
2013 - 14	45,524	1,815	4.0%	\$303,111	\$167	\$1	\$12,630
2014 - 15	46,202	1,627	3.5%	\$394,072	\$242	\$1	\$75,000
2015 - 16	42,603	1,627	3.8%	\$454,491	\$279	\$1	\$75,000
2016 - 17	48,887	1,209	2.5%	\$321,664	\$266	\$1	\$100,000
2017 - 18	54,941	1,182	2.2%	\$460,098	\$389	\$1	\$71,045
2018 - 19	51,600	1,047	2.0%	\$259,802	\$248	\$1	\$20,565
2019 - 20	45,864	790	1.7%	\$221,646	\$281	\$1	\$25,253

Source: University Advancement Office.

Notes:

- Results do not include trusts and estates.
- Alumni undergraduate total reflects people with current addresses.
- Alumni defined as individuals with conferred UAA degrees/certificates.
- In 2004, Advancement upgraded their historical database which accounts for the dramatic alumni increase.
- In 2014, Advancement researched lost alumni in database which accounts for the alumni increase.
- In FY16, alumni with bad addresses and no solicit requests reduced total alumni count.

Donations by Amount and Donor Type

University of Alaska Anchorage

Table 5.13

	FY2017-18			FY2018-19			FY2019-20			FY19-FY20
	Donors	Total \$	Avg \$	Donors	Total \$	Avg \$	Donors	Total \$	Avg \$	Avg \$ % Change
\$1 - \$25										
Individual	306	6,603	22	403	6,040	15	200	4,235	21	41.3%
Group	3	50	17	4	70	18	4	77	19	10.0%
Total	309	6,653	22	407	6,110	15	204	4,312	21	40.8%
\$26 - \$50										
Individual	443	21,048	48	450	21,232	47	269	12,770	47	0.6%
Group	13	633	49	8	370	46	3	150	50	8.1%
Total	456	21,681	48	458	21,602	47	272	12,920	47	0.7%
\$51 - \$100										
Individual	504	47,973	95	493	45,859	93	376	35,596	95	1.8%
Group	31	2,904	94	23	2,244	98	15	1,441	96	-1.6%
Total	535	50,876	95	516	48,103	93	391	37,037	95	1.6%
\$101 - \$500										
Individual	467	130,749	280	548	146,382	267	358	102,808	287	7.5%
Group	63	21,169	336	76	25,153	331	43	13,527	315	-5.0%
Total	530	151,917	287	624	171,535	275	401	116,335	290	5.5%
\$501 - \$1,000										
Individual	105	96,368	918	97	86,795	895	81	73,627	909	1.6%
Group	19	16,495	868	37	33,497	905	23	20,429	888	-1.9%
Total	124	112,863	910	134	120,292	898	104	94,056	904	0.7%
\$1,001 - \$10,000										
Individual	105	310,770	2,960	108	335,251	3,104	79	225,620	2,856	-8.0%
Group	60	207,251	3,454	52	189,737	3,649	64	256,941	4,015	10.0%
Total	165	518,021	3,140	160	524,988	3,281	143	482,562	3,375	2.8%
\$10,001 - \$50,000										
Individual	8	163,653	20,457	13	276,392	21,261	7	145,552	20,793	-2.2%
Group	28	728,519	26,019	29	685,576	23,641	24	636,624	26,526	12.2%
Total	36	892,172	24,783	42	961,968	22,904	31	782,175	25,231	10.2%
\$50,001 - \$100,000										
Individual	4	283,345	70,836							
Group	6	382,139	63,690	7	445,448	63,635	2	159,564	79,782	25.4%
Total	10	665,484	66,548	7	445,448	63,635	2	159,564	79,782	25.4%
\$100,001 - \$500,000										
Individual							1	108,000	108,000	
Group	8	1,537,568	192,196	6	1,432,195	238,699	7	1,296,189	185,170	-22.4%
Total	8	1,537,568	192,196	6	1,432,195	238,699	8	1,404,189	175,524	-26.5%
\$500,001+										
Group	1	1,760,000	1,760,000	2	6,625,647	3,312,824	1	1,770,200	1,770,200	-46.6%
Total UAA										
Individual	1,942	1,060,508	546	2,112	917,952	435	1,371	708,208	517	18.8%
Group	232	4,656,727	20,072	244	9,439,937	38,688	186	4,155,141	22,339	-42.3%
Total	2,174	5,717,236	2,630	2,356	10,357,889	4,396	1,557	4,863,348	3,124	-29.0%

Source: University Advancement Office.

Notes:

1. Donors are unduplicated.
2. Total \$ = contributions made by the donors.
3. Individuals or groups who contributed multiple times within a fiscal year are reported only once in a donor range based on their total amount of donation.

UAA Tuition Rate History Fiscal Years 2017-2021

Table 5.14

	(in \$ per credit)					% Change	
	FY2017	FY2018	FY2019	FY2020	FY2021	FY17-FY21	FY20-FY21
Anchorage Campus, Kenai Peninsula College, and Matanuska-Susitna College*							
Resident							
Undergraduate							
Lower Division Courses	192	202	212	223	234	21.9%	4.9%
Upper Division Courses	232	244	256	269	282	21.6%	4.8%
Graduate	444	466	489	513	513	15.5%	0.0%
Non-Resident							
Undergraduate							
Lower Division Courses	681	715	751	789	800	17.5%	1.4%
Upper Division Courses	721	757	795	835	848	17.6%	1.6%
Surcharge	489	513	539	566	566	15.7%	0.0%
Graduate	907	979	1028	1,079	1,079	19.0%	0.0%
Surcharge	463	513	539	566	566	22.2%	0.0%
Kodiak College							
Resident							
Undergraduate							
Lower Division Courses	169	185	204	223	234	38.5%	4.9%
Prince William Sound College							
Resident							
Undergraduate							
Lower Division Courses	168	185	204	223	234	39.3%	4.9%

Source: Institutions' websites.

* Anchorage Campus, Kenai Peninsula College, and Matanuska-Susitna College share the same lower division course tuition rates.

Definition of Terms

Academic Rank: The rank held by persons having the title of professor, associate professor, and assistant professor; title denotes academic rank exclusively; the title of instructor may also be a title of academic rank at the discretion of the policies and procedures approved for each university.

Academic Year (AY): At UAA and UA, is a 3-term, 12-month period beginning with Summer opening and ending with Spring closing commonly identified by reference to the calendar year in which it ends; e.g. AY 2019 (Also known as AY 18-19) includes Summer 2018, Fall 2018, and Spring 2019. (IPEDS, UA, and UAA IR)

Adjunct Faculty: Faculty with temporary assignments.

Adjusted Cohort: The result of removing any allowable exclusions from a cohort (or sub-cohort). For the Graduation Rates component, this is the cohort from which graduation and transfer-out rates are calculated; for the Fall Enrollment component, it is the cohort for calculating retention rate. Allowable exclusions are students who have died or were permanently disabled, left to serve in the armed forces, left to serve with a foreign aid service of the federal government (e.g. Peace Corp), or left to serve on official church mission.

Admitted Student: Applicant who has been granted an official offer to enroll in a postsecondary institution.

Applied Student: An individual who has fulfilled the institution's requirements to be considered for admission (including payment or waiving of the application fee, if any) and who has been notified of one of the following actions: admission, non-admission, placement on waiting list, or application withdrawn by applicant or institution.

Assistant Professor: At UAA, an appointment criteria for persons who meet the minimum criteria for initial appointment to this rank as follows: Tripartite Academic = Terminal degree in the discipline or appropriate field and evidence of a potential for successful teaching, service, and research/creative activity; Bipartite Academic = Master's degree in the discipline or appropriate field and two years documented successful teaching and service; and Bipartite Vocational Education = Bachelor's degree in the discipline or appropriate field and two years documented successful teaching and/or related work experience beyond the apprentice level in an area directly related to the faculty appointment.

Associate Degree: An award conferred by the Alaska Board of Regents that signifies successful completion of a defined program of study. Note: At UAA, all associate degrees require a minimum of 60 semester hours but no more than 75 semester hours.

Associate Professor: At UAA, criteria for persons who meet the minimum criteria for initial appointment to this rank are as follows: Tripartite Academic = Terminal degree in the discipline or appropriate field and five years successful performance at the rank of assistant professor, including evidence of accomplishment in the area of research/creative activity; Bipartite Academic = Master's degree in the discipline or appropriate field and eight years successful teaching and service in an appropriate institution of higher education and evidence of professional development in the area of teaching or pedagogically related activities or creativity; and Bipartite Vocational Education = Master's degree in the discipline or appropriate field and three years documented successful teaching or Bachelor's degree plus 30 semester hours of systematic study in a closely related discipline.

Auxiliary Enterprises Expenditures: Expenditures for self-supporting operations of the institution that exist to furnish a service to students, faculty, or staff, and that charge a fee that is directly related to, although not necessarily equal to, the cost of the service. Examples include residence halls, food services, student health services, intercollegiate athletics (if self-supporting), college stores, parking.

Auxiliary Services Revenue: Revenues generated by or collected from the auxiliary enterprise operations of the institution that exist to furnish a service to students, faculty, or staff, and that charge a fee that is directly related to, although not necessarily equal to, the cost of the service. Auxiliary enterprises are managed as essentially self-supporting activities.

Baccalaureate Degree: An award conferred by the Alaska Board of Regents that signifies successful completion of a defined program of study that consists of both lower- and upper-division coursework. Traditionally known as a four-year degree. At UAA, all Baccalaureate degrees require a minimum of 120 to 132 semester credits.

Budget: An estimate, often itemized, of expected income and expense for a given period in the future.

Calendar Year: A 12-month time period commencing January 1 and ending December 31.

Campus: A location of an institution that is geographically apart; and is permanent in nature; offers at least 50% of the courses of an educational program leading to a degree, certificate, or other educational credential; has its own faculty and administrative organization; and has its own budgetary and hiring authority. Examples: Anchorage, Mat-Su, Kenai Peninsula, Kodiak, and Prince William Sound.

Certification: A process by which an agency or association grants recognition to an individual who has met certain predetermined qualifications specified by that agency or association.

Capital Improvement Program (CIP) Receipts: CIP receipts are generated by chargeback to capital improvement projects to support CIP personnel service administrative costs.

Class Standing: Class standing is an administrative classification and does not necessarily reflect progress toward completion of a degree. Class standing is based on total credits earned and is used for determining priority registration. (UAA catalog)

Clerical and Secretarial: A primary function or occupational activity category used to classify persons whose assignments typically are associated with clerical activities or are specifically of a secretarial nature. Includes personnel who are responsible for internal and external communications, recording and retrieving of data (other than computer programmer) and/or information and other paperwork required in an office. (IPEDS)

Cohort: A specific group of students established for tracking purposes. (IPEDS)

College: An aggregation of two or more academic departments into a major academic organizational unit. Its primary purposes are to provide governance, resource management and planning support for carrying out instruction, research and public service functions, and offering programs. A college is typically supervised by a dean who exercises authority and responsibility over all permanent and temporary faculty and staff assigned to departments under the college's jurisdiction. At UAA, there are five academic colleges. (UAA, UAA IR)

Community Campus: A location of an institution that is geographically apart and independent of the main campus and (1) is permanent in nature; (2) offers at least 50% of the courses of an educational program leading to a degree, certificate, or other educational credential; (3) has its own faculty and administrative organization; and (4) has its own budgetary and hiring authority. Within UAA, a community campus is supervised by a Director with emphasis on administrative and academic functions although also has responsibility for site and facilities. At UAA, campuses also offer programs of study leading to certificates and associate degrees. (UAA, UAA IR)

Course: A defined subset of instructional activity in which students enroll to acquire knowledge and/or complete graduation requirements. Each course is identified by a unique combination of two fields: Discipline (or its course prefix equivalent) and course number (an indicator of subject matter level). (UAA IR)

Course Level: The course number indicates the course level. Developmental courses are typically numbered 050 to 099, lower division courses are numbered 100 to 299, upper division courses are numbered 300 to 499, professional courses are numbered 500 to 599, and graduate courses are numbered 600 and above.

Credit Hour: A unit of measure representing an equivalent of an hour (50 minutes) of instruction per week over the entire term. It is applied toward the total number of credit hours needed for completing the requirements of a degree, diploma, certificate or other formal award. (IPEDS)

Degree: An award conferred by the Alaska Board of Regents as official recognition for the successful completion of a program of study.

Degree Seeking: At UAA, a student declares a degree-seeking intent by applying for and meeting university admission requirements to a degree or certificate program. They may apply for admission as undeclared majors and still be considered as degree seeking.

Department: A university-defined administrative organizational unit that organizes resources for creation and dissemination of knowledge within associated disciplines. Academic departments are responsible for creating, offering, and evaluating courses, and providing instructional and research support to faculty who work in the disciplines.

Developmental Course: Course that provides basic or supplemental preparation for introductory college courses. This type of course is not applicable to certificate, associate, baccalaureate or graduate degrees, even by petition. Courses are numbered from 050 to 099.

Discipline: A defined subset of knowledge and inquiry within the universe of knowledge as classified by the National Classification of Instructional Program (CIP). (UAA IR)

Doctoral Degree: The highest award a student can earn for graduate study. The Doctoral degree includes such degrees as Doctor of Education and the Doctor of Philosophy in many fields of study. (IPEDS)

Enrollment: A duplicate count of students enrolled ("seats occupied") in all course section offerings (credit or non-credit) on the official census date of each term. The same student is counted in each section of official enrollment; e.g. a student enrolled in 3 class sections is counted as 3 enrollees. (UAA IR)

Executive, Administrative, and Managerial: Professional staff whose assignments require primary (and major) responsibility for management of the institution or a customarily recognized department or subdivision thereof. Assignments require the performance of work directly related to management policies or general business operations of the institution. It is assumed that assignments in this category customarily and regularly require the incumbent to exercise discretion and independent judgment and to direct the work of others. (IPEDS)

Extended Site: A site or center outside the confines of the parent institution where courses are offered that are part of an organized program at the parent institution. The site is not considered to be temporary, but may be rented or made available to the institution at no cost by another institution or an organization, agency, or firm. Traditionally, a physical site located away from the main campus, e.g., Chugiak/Eagle River, military education centers, etc. where students gather to receive instruction from university-affiliated faculty. (UAA, IPEDS)

Faculty Workload: Permanent and term faculty are awarded a workload with five (5) part assignments. Tripartite faculty assignments are generally three parts instructional (0.6 FTE), one part research (0.2 FTE), and one part service (0.2 FTE). Bipartite assignments are four parts instructional (0.8 FTE) and one part service (0.2 FTE).

Federal Receipts: All revenue received from the federal government. These include restricted federal grants from such agencies as the National Science Foundation, Department of Health and Human Services, National Institutes of Health, and other federal agencies, as well as additional federal funding for student financial aid and work-study programs.

Financial Aid: Federal Work Study, grants, loans to students (government and/or private), assistantships, scholarships, fellowships, tuition waivers, tuition discounts, employer aid (tuition reimbursement) and other monies provided to students to meet expenses (excluding gifts and loans from parents/relatives/friends).

First-Time Freshman: A degree-seeking student who enrolls in an institution with no prior postsecondary experience. Includes students enrolled in academic or occupational programs. Also includes students enrolled in the fall term who attended college for the first time in the prior summer term, or students who entered with advanced standing (college credits earned before graduation from high school), or Middle College School. (UAA IR)

Fiscal Year (FY): A 12-month period for maintaining financial records. Generally, the State of Alaska FY begins on July 1 and ends the following June 30. The federal fiscal year starts October 1 and ends September 30. (UAA IR)

Freshman: Admitted, first-time, continuing or returning first-year undergraduate student who has successfully completed, either at this university or approved credit from another college/university, a total of 29 credit hours or less. Excludes audit credit. (UAA IR)

Full-Time Equivalent Students (FTES): A single value providing a meaningful combination of full-time and part-time students. The convention used for calculation is annual Student Credit Hours (SCH) divided by 30 or 24 credit hours for undergraduate and graduate students respectively. If FTES is calculated for a single semester, then the divisor used is 15 or 12 credit hours for undergraduate and graduate students respectively. An additional convention sometimes used by UAA IR is total full-time students plus one-third part-time students. (IPEDS) This calculation is used where SCH are not available.

Full-Time Student: An undergraduate student who is enrolled at UAA for 12 or more credits or a graduate student enrolled at UAA for 9 or more 600 level credits is classified as full-time. Audited courses, credit-by-examination courses, continuing education units (CEUs) and professional development courses (500 level) are not included in the computation for full-time status.

General Fund Appropriations: Legal authority to expend resources received by an institution through acts of a legislative body, except grants and contracts. These funds are for meeting current operating expenses and not for specific projects or programs. The most common example is a state's general appropriation. For UAA, this is the State of Alaska's appropriation to the university system.

Grade: A university-recognized symbol used to signify a student's academic performance and/or document actions taken by the university relative to a student in a particular class section. See UAA catalog for specific grading information. (UAA IR)

Graduate Certificate: A graduate-level certificate program is a coherent sequence of related graduate courses between 12 to 19 credit hours. These programs are designed to provide graduate education past the baccalaureate level and/or to enhance the education of students who already have a master's degree. (UAA Catalog)

Graduate Level Courses: Graduate-level courses require a background in the discipline and an ability to contribute to written and oral discourse on advanced topics in the field at a level beyond that required by a bachelor's degree. Graduate courses have course numbers of 600-699.

Graduate Student: A student who holds a baccalaureate degree and is admitted/accepted to a graduate program at UAA and enrolled in graduate level (600+) courses.

Graduation Rate: The percentage of first-time, full-time undergraduate certificate- and degree-seeking students enrolled in a given fall semester who earn a degree within six years (150% of the time to complete a four-year degree) or three years (150% of the time to complete a two-year degree). This rate is required for disclosure and/or reporting purposes under the Student Right-To-Know Act and is defined by the U.S. Department of Education. (IPEDS)

Grants and Contracts: Revenues from governmental agencies and nongovernmental parties that are for specific research projects, other types of programs, or for general institutional operations (if not governmental appropriations). Examples include research programs, training programs, student financial assistance, Pell Grants, etc. for which amounts are received or expenses are reimbursable under the terms of a grant or contract. (IPEDS)

Headcount: An unduplicated count of unique individuals (in total or in a cohort) who are enrolled at UAA in credit courses on the official semester/term census date. The unduplicated count can be for a single semester or an academic year.

Institutional Support: A functional expense category that includes expenses for the day-to-day operational support of the institution. Includes expenses for general administrative services, central executive-level activities concerned with management and long range planning, legal and fiscal operations, space management, employee personnel and records, logistical services such as purchasing and printing, and public relations and development. Also includes information technology expenses related to institutional support activities. If an institution does not separately budget and expense information technology resources, the IT costs associated with student services and operation and maintenance of plant will also be applied to this function. (IPEDS)

Instructional Expenditure: A functional expenditure category that includes expenditures of the colleges, schools, departments, and other instructional divisions of the institution and expenditures for departmental research and public service that are not separately budgeted. Includes expenditures for both credit and non-credit activities.

Instructor: Initial appointment criteria for persons who meet the minimum criteria to this rank are as follows: Tripartite Academic = competence in the profession or discipline and ability to effectively communicate training and subject matter to others. Appointees will hold minimal credentials; Bipartite Academic = competence in the profession or discipline and ability to effectively communicate training and subject matter to others. Appointees will hold minimal credentials; Bipartite Vocational Education = competence in the profession or discipline and ability to effectively communicate training and subject matter to others. Appointees will hold credentials. (Faculty Services)

Junior: An admitted undergraduate student who has successfully completed, either at this university or approved credit from another college/university, a total of 60-89 credit hours. Excludes audit credit. (UAA IR)

Lower Division Course: This type of course is usually a foundation course which introduces a field of knowledge or connects the foundation with advanced work in a given field. Courses are typically numbered between 100 and 299. Lower division courses are usually taken by freshmen and sophomores.

Major: A field of knowledge and inquiry a student may pursue as a primary interest focus. Although non-admitted students may take coursework associated with a major, only admitted students may formally declare a major. (UAA, UAA IR)

Master's Degree: An award conferred by the Alaska Board of Regents that signifies successful completion of a program of study consisting of courses/experiences above the baccalaureate degree of at least 30 semester credits beyond the baccalaureate degree and at least 21 of those credits must be at the graduate course level. (UAA, UAA IR)

Minor: A field of knowledge and inquiry a student may pursue as a secondary interest focus. Minors are usually not required elements in a program of study, no degrees are awarded in a minor, and it must be earned in conjunction with a baccalaureate. (UAA)

Non-Credit Course: Courses offered as career development, adult basic education, continuing education or community interest instruction. Not applicable to any degree or certificate requirements (even by petition). They have no regular tuition but do have other special fees. These courses are number from 001 to 049.

Non-Degree Seeking (NDS): A student enrolled in courses for credit who is not recognized by the institution as seeking a degree or formal award. A student who has not formally declared intention of earning a degree from this university. A NDS student may be concurrently enrolled in high school, or be NDS at one campus and degree seeking at another. (IPEDS, UAA IR)

Occupational Endorsement Certificate (OEC): Certificate requiring 9 to 29 hours to complete. This certificate provides specialized knowledge and skills needed in specific employment sectors.

Opening/Closing Freeze: The official dates set by the university state system each Fall, Spring and Summer terms when the university extracts ("freezes") data elements from UA system source data files for use in preparing official comparable management information for internal and external use. Opening/closing freeze dates vary by type of data file, e.g. student, finance, human resources. (UAA IR)

Origin at Entry: Origin at entry is the location of a student when first enrolling at the university: city for students from Alaska, state for students from outside Alaska, and country for international students. (UA, UAA IR)

Part-Time Student: An undergraduate student with a term credit load of 1-11 semester credits or a graduate student with a term credit load of 1-8 semester credit hours of 600 level courses during a particular semester. (IPEDS, UAA IR)

Post-Baccalaureate Student: A student with a bachelor's degree admitted to and enrolled in a post-baccalaureate certificate program.

Post-Baccalaureate Certificate: An award that requires completion of an organized program of study beyond the bachelor's. It is designed for persons who have completed a baccalaureate degree, but does not meet the requirements of a master's degree. (IPEDS)

Pre-Major: Assigned to students who have been accepted for general admission to the degree level of their desired program but have not yet been formally accepted to a specific program. Usually they remain in this status while completing program prerequisites and/or department-level admission processes. Pre-majors have class standing and may be eligible for financial aid and international student visas. (UAA, UAA IR)

Professor: At UAA, an appointment criteria (an extraordinary event) for persons who meet the minimum criteria for initial appointment to this rank are as follows: Tripartite Academic and Bipartite Academic = May be appointed based on exemplary academic performance. Terminal degree in the discipline or appropriate field and national or international reputation for excellence. Bipartite Vocational Education = May be appointed based on exemplary academic performance and Master's degree in vocational education and six years outstanding documented teaching and/or professional experience beyond the apprentice level or a national or international reputation for excellence in the discipline. Promotion criteria are as follows: Tripartite Academic = Terminal degree in the discipline or appropriate field and evidence of exemplary teaching, service and research/creative activity and five years at the rank of associate professor, of which three must be at this university; Bipartite Academic = Terminal degree in the discipline or appropriate field and evidence of exemplary teaching and service and five years at the rank of associate professor of which three must be at this university. Note: Master's degree shall be considered the terminal degree for former community college faculty who transferred to this university under 1987 BOR policy. (Faculty Services)

Program: Requires three components: a discipline or major (e.g., Psychology, Mathematics, International Studies); a degree or certificate level (e.g. Associate, Bachelors, Masters); and degree type (e.g. Associate of Applied Science, Bachelor of Arts).

Race/Ethnicity: Categories developed by the U.S. Office of Management and Budget (OMB) that are used to describe groups to which individuals belong, identify with, or belong in the eyes of the community. The designations are used to categorize U.S. citizens, resident aliens, and other eligible non-citizens. Individuals are asked to first designate ethnicity as: Hispanic or Latino or Not Hispanic or Latino. Second, individuals are asked to indicate one or more races that apply among the following: American Indian or Alaska Native, Asian, Black or African American, Native Hawaiian/Pacific Islander, White. (IPEDS) Where an individual chooses more than one race and it includes Alaska Native, that individual is included in an Alaska Native Multirace at UAA.

Regular/Term Assignment: Individuals who are hired as permanent employees of the university and are eligible to receive salary and all benefits to perform their designated job duties. Term-funded employees can be regular employees. Their appointment is typically to an academic unit for an academic year. They are generally regarded as having a continuing appointment. (HRS)

Revenue: The inflow of resources or other enhancement of net assets of an institution or settlements of its liabilities from delivering or producing goods, rendering services, or other activities that constitute the institution's ongoing major or central operations. Includes revenues from fees and charges, auxiliary enterprises, and contributions and other non-exchange transactions. (IPEDS)

Semester: A calendar system that consists of two sessions called semesters during the academic year with about 15 weeks of instruction. (IPEDS)

Senior: An admitted undergraduate student who has successfully completed, either at this university or approved credit from another college/university, a total of 90+ credit hours. Excludes audit credit. (UAA IR)

Sophomore: An admitted undergraduate student who has successfully completed, either at this university or approved credit from another college/university, a total of 30-59 credit hours. Excludes audit credit. (UAA IR)

Student: Any person for whom the university maintains an educational record and meets one or more of the following criteria: (1) officially enrolled in a course (credit or non-credit) offered under university authority, (2) is on an approved student exchange, internship, or other program of study. (UAA IR)

Student Assistant: Student who is employed by this university, predominantly through Work Study funds, to perform a variety of non-professional assignments in support of the university. (UAA IR)

Student Credit Hour (SCH): The total credit hours awarded to students during a given period. In fixed credit courses, it is the sum of the product of course section credit times the course section enrollment.

Student Fee: Amounts charged to students for items or services not covered by tuition or course fees; e.g. Student Health Center fee, application fee. (UAA IR)

Student Services Expenditure: A functional expenditure category that includes expenditures for admissions, registrar activities, and activities whose primary purpose is to contribute to students' emotional and physical well-being and to their intellectual, cultural, and social development outside the context of their formal instructional program; e.g. student activities, student newspaper, intramural athletics, student organizations and student records. (IPEDS)

Summer Session: A summer session is shorter than a regular semester. The institution may have two or more sessions occurring in the summer months.

Technical/Paraprofessional: A primary function or occupational activity category used to classify persons whose assignments require specialized knowledge or skills which may be acquired through experience, apprenticeship, on-the-job-training, or academic work in occupationally specific programs that result in a 2-year degree or other certificate or diploma. Includes persons who perform some of the duties of a professional in a supportive role, which usually requires less formal training and/or experience than normally required for professional status.

Temporary Employee: Casual labor, adjunct faculty, and employees who do not work in a budgeted position.

Tenure: Status of a personnel position with respect to permanence of the position according to the terms of Alaska Regents Policy 04.04.040(B). Its purpose is to assure an environment that will nurture academic freedom by providing employment security. At UAA, qualitative criteria for tenure are determined by individual schools and colleges. Faculty with initial appointment to full professor are awarded tenure at the time of appointment. Initial appointments to associate professor may be made with/without tenure but the latter must be reviewed for tenure no later than the 4th consecutive year of service. All non-tenured assistant professor appointees must be reviewed for tenure no later than the 7th consecutive year of service. Tenure may be awarded to faculty holding the rank of instructor, and time in the rank of instructor shall count toward tenure. Faculty who are not awarded tenure by the end of their mandatory year of review shall be offered a terminal appointment for one additional year of service. (BOR, IPEDS, Faculty Services)

Tenure Track: Faculty who are eligible to apply for tenure.

Tuition: The amount of money charged to students for instructional services. Tuition may be charged per semester or session, per course, or per credit and may vary.

UA Receipts: Private unrestricted gifts, grants, contracts, endowment revenue, sales and services of educational activities, vending machine revenue, rent, athletic ticket sales, etc. (UAA IR)

UA Scholar: A resident student attending an Alaska high school who is recruited by the UA system and offered a scholarship for placing in the top ten percent of his/her graduating class, regardless of graduating class size, based on GPA at the end of their junior year. The number of UA Scholars in a reported term is defined as the sum of the following three internal classification levels: (1) Paid UA Scholar - all enrolled students receiving a UA Scholar distribution in the reported term; (2) Non-Paid UA Scholar - paid in past term but not in reported term; and (3) Non-Paid Eligible Scholar - never paid but eligible in reported term. (UAA IR)

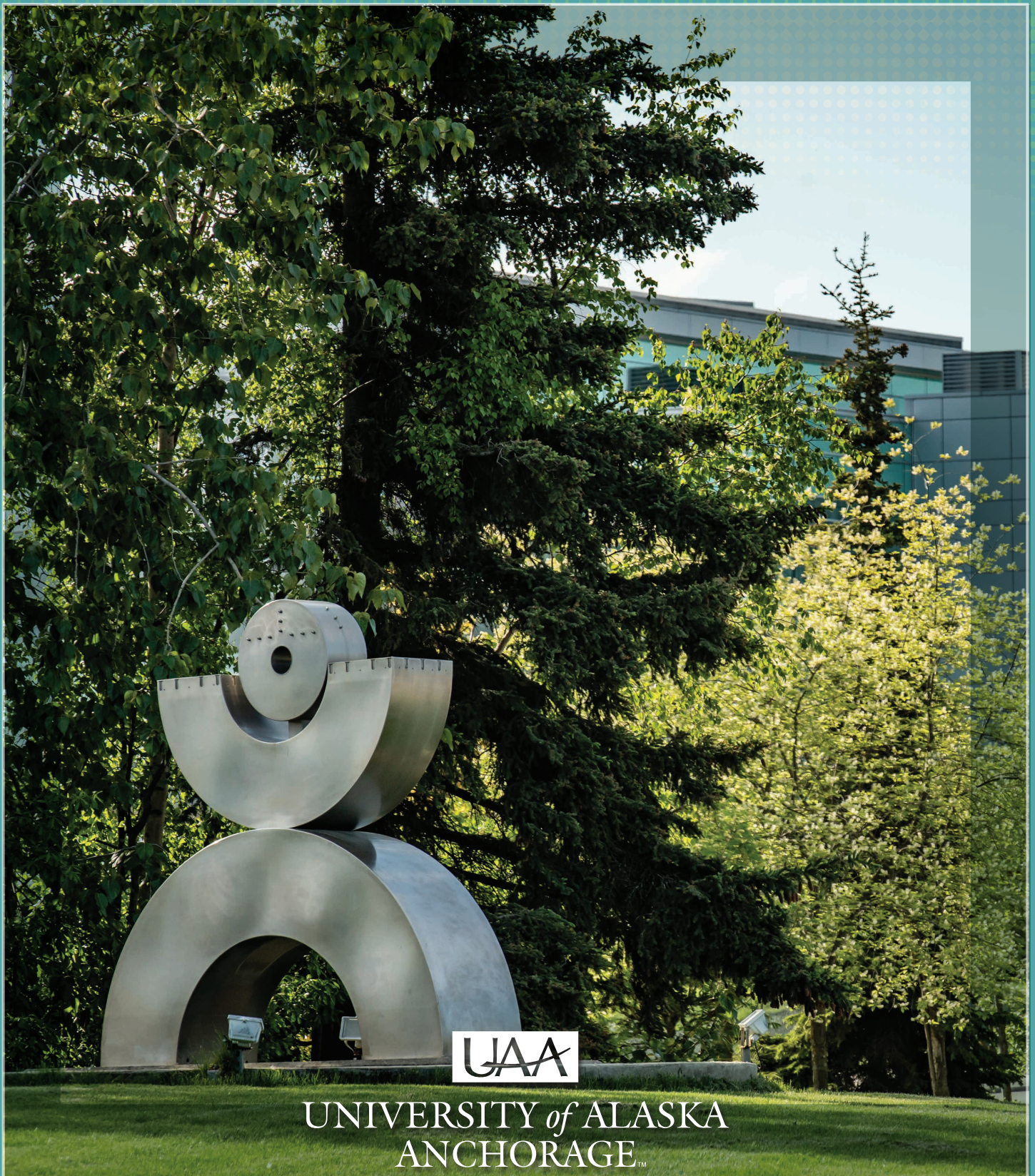
Undergraduate Certificate: A formal award certifying the satisfactory completion of a postsecondary education program as approved by the Alaska Board of Regents. Requires a minimum of 30 and a maximum of 60 semester credit hours.

Undergraduate Student: A student enrolled in a bachelor's degree program, an associate's degree program, or certificate program below the baccalaureate.

University of Alaska Anchorage (UAA): One of the post-secondary institutions of the University of Alaska statewide system of public higher education. It is accredited by the Northwest Commission on Colleges and Universities, which is recognized by the U.S. Department of Education.

Upper Division Course: Upper division courses require a background in the discipline recognized through course prerequisites, junior or senior standing, or competency based requirements. Course with numbers between 300 to 499. Upper division courses are usually taken by juniors and seniors.

Workforce Credentials: A non-credit credential (or certification) that is aligned with national standards or with a recognized certification/license or meets an industry-specific employment standard.



UNIVERSITY of ALASKA
ANCHORAGE™

***YOUR* HOMETOWN UNIVERSITY**

www.uaa.alaska.edu