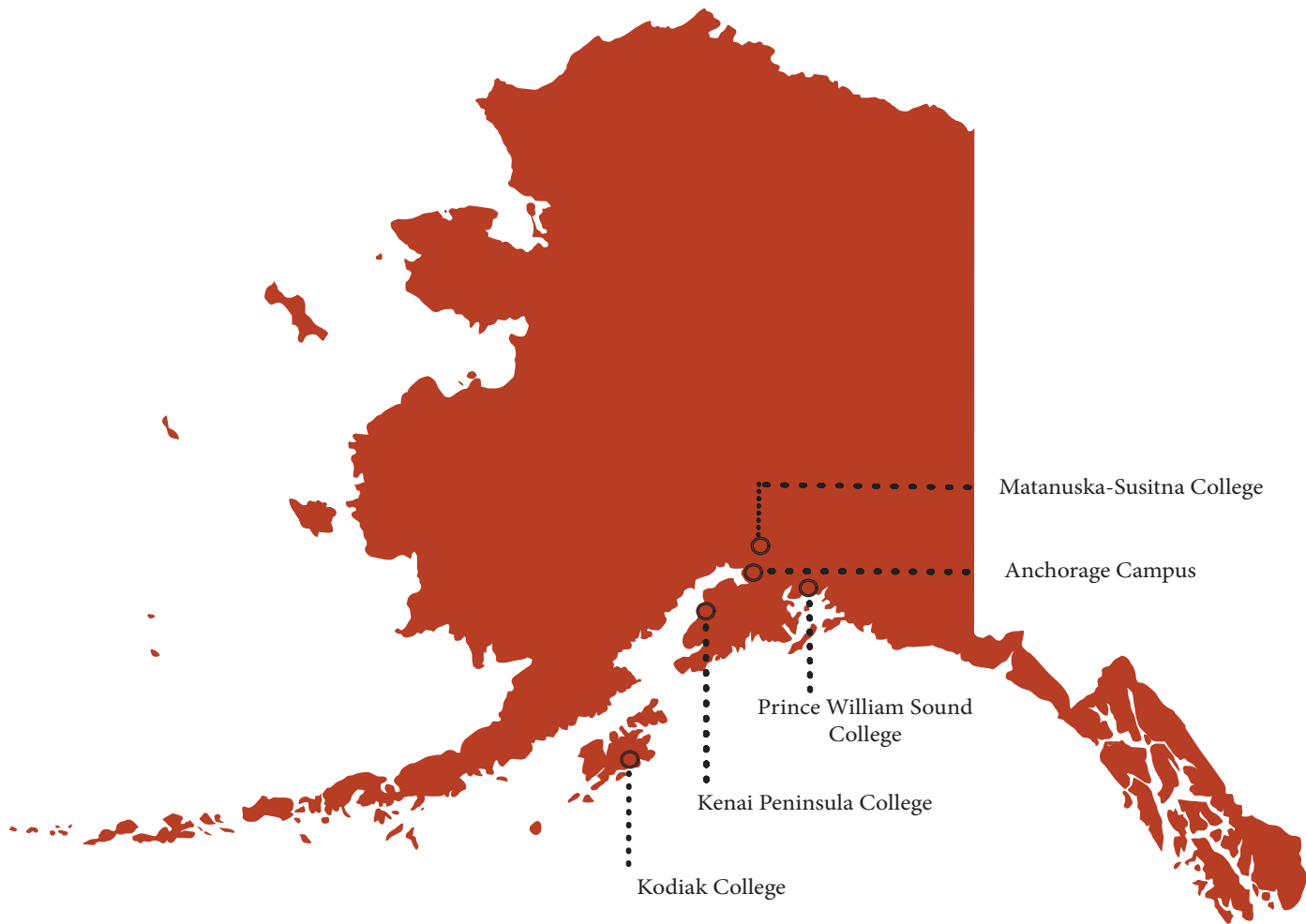


Introduction



UNIVERSITY *of* ALASKA ANCHORAGE

LOCATIONS



INTRODUCTION

The University of Alaska Anchorage (UAA) is a multi-campus university that serves 24,000 students each year and has a service area as expansive as the state of Montana. UAA is the largest university in the state and one of three separately accredited universities in the University of Alaska Statewide System.

For a young institution, UAA has an extremely complex history. The present university was created in 1987 following a statewide reorganization that merged a university with several community colleges. In one form or another, these institutions have offered educational opportunities to the communities of southcentral Alaska since the 1950s.

Partly due to this unique history, UAA today is an open access university with one of the broadest missions in higher education. UAA offers instruction ranging from Adult Basic Education to graduate and professional education, serves both traditional and non-traditional students, and confers awards ranging from occupational endorsements to associate, baccalaureate, master's, and doctoral degrees. Through partnerships and affiliate programs, UAA also offers instruction leading to medical and other professional degrees. Through its centers and institutes, the university's research helps Alaskans to improve their health, public policy, education, training, economic development, and quality of life.

UAA is accredited by the Northwest Commission of Colleges and Universities (NWCCU). Many individual academic programs have additional specialized accreditation from professional associations and other external entities.

UAA is classified by the Carnegie Foundation for the Advancement of Teaching as a public Master's Colleges & Universities: Larger Programs, with a special classification for Community Engagement. Distinctive educational opportunities include undergraduate research, national and international exchanges, and study abroad programs. UAA has been named to the 2019-20 *Military Friendly Schools list*, the 11th consecutive year by Victory Media.

Major Campuses and Academic Units

Anchorage Campus

- College of Arts & Sciences
- College of Business & Public Policy
- College of Engineering
- College of Health
- Community & Technical College
- University Honors College
- Graduate School*

Kenai Peninsula College

Kodiak College

Matanuska-Susitna College

Prince William Sound College

* Supports the graduate curriculum and research offered through all Colleges and Schools.



UNIVERSITY *of* ALASKA ANCHORAGE

LEADERSHIP

The mission of the University of Alaska Anchorage is to discover and disseminate knowledge through teaching, research, engagement, and creative expression.

Located in Anchorage and on community campuses in Southcentral Alaska, UAA is committed to serving the higher education needs of the state, its communities, and its diverse peoples.

The University of Alaska Anchorage is an open-access university with academic programs leading to occupational endorsements; undergraduate and graduate certificates; and associate, baccalaureate, and graduate degrees in a rich, diverse, and inclusive environment.

CATHY SANDEEN, Chancellor

JOHN STALVEY, Interim Provost and Executive Vice Chancellor, Academic Affairs

BEVERLY SHUFORD, Vice Chancellor, Administrative Services

BRUCE SCHULTZ, Vice Chancellor, Student Affairs

MEGAN OLSON, Vice Chancellor, University Advancement

RENEE CARTER-CHAPMAN, Senior Vice Provost, Academic Affairs

ANCHORAGE COLLEGES

College of Arts & Sciences

John Petraitis, Interim Dean

College of Business & Public Policy

Karen Markel, Dean

College of Engineering

Kenrick Mock, Interim Dean

College of Health

Jeff Jessee, Dean & Vice Provost of Health Programs

Community & Technical College

Denise Runge, Dean

Consortium Library

Steve Rollins, Dean

University Honors College

John Mouracade, Dean

COMMUNITY CAMPUSES

Kenai Peninsula College

Gary Turner, Director

Kodiak College

Betty Walters, Interim Director

Matanuska-Susitna College

Talis Colberg, Director

Prince William Sound College

J. Dan O'Connor, Director

UNIVERSITY GOVERNANCE

Faculty Senate

Scott Downing, President, 2019 - 2020

Maria Williams, President, 2018 - 2019

Staff Council

John Moore, Dawn Humenik, Co-Presidents, 2019 - 2020

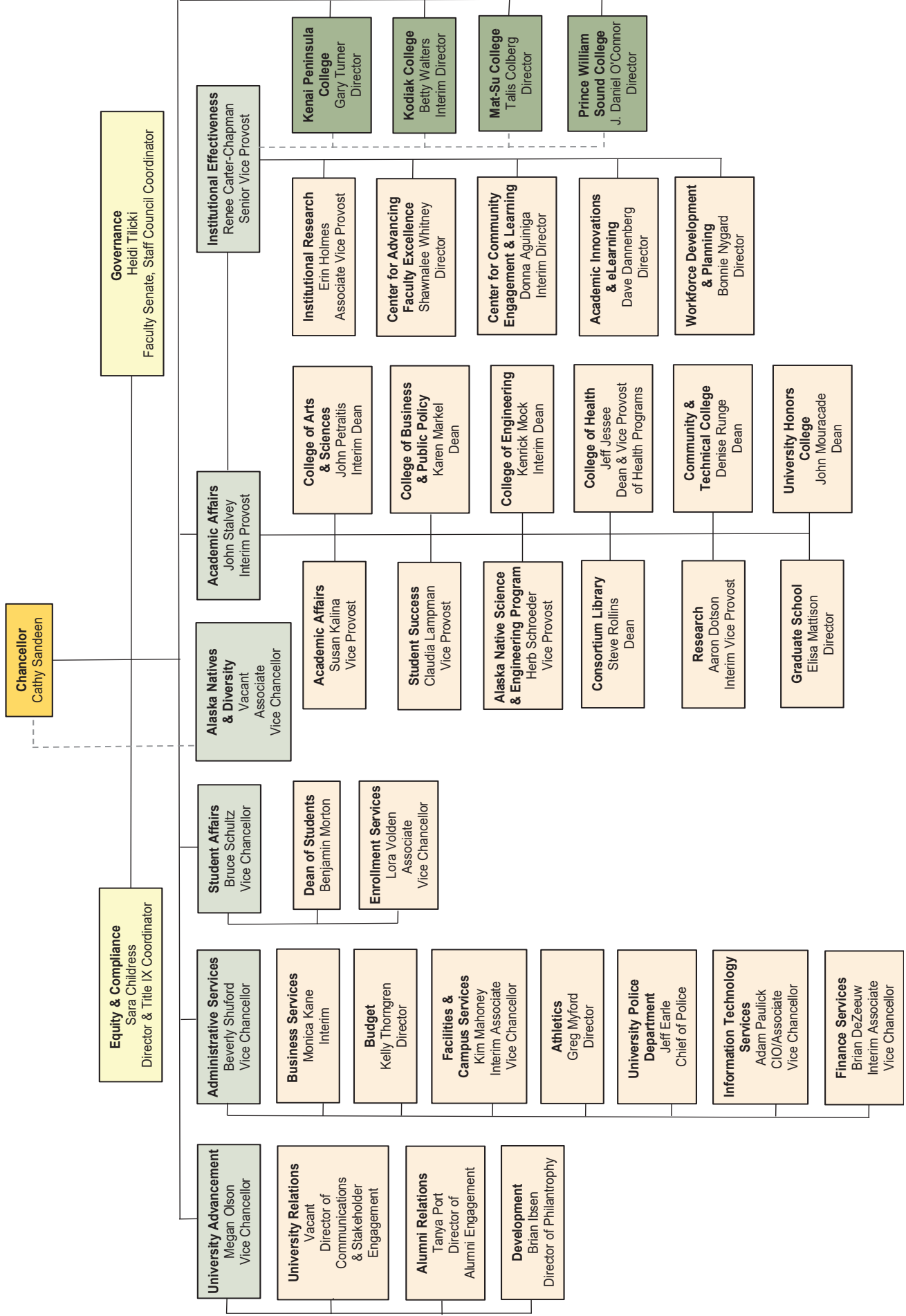
Brenda Levesque, John Moore, Co-Presidents, 2018 - 2019

USUAA Student Government

Clare Baldwin, President, 2019 - 2020

Geser Bat-Erdene, President, 2018 - 2019

ORGANIZATIONAL STRUCTURE



FAST FACTS

UAA TOTAL	Anchorage Campus	Kenai Peninsula College	
STUDENTS			
AY 18-19 Student Credit Hours	304,483	240,168	27,313
Headcount	23,586	18,486	4,256
Full-time Equivalent	10,316	8,178	909
Awards Granted	2,317	2,058	87
Fall 2018 Headcount	16,530	13,158	2,476
Full-time	6,651	5,939	947
Part-time	9,879	7,219	1,529
FACULTY AND STAFF—FALL 2018			
Regular Faculty	603	526	33
Adjunct Faculty	564	363	81
Staff	1,276	1,059	93
FACILITIES			
Square Feet	3,342,007	2,894,400	183,214
FINANCE—FY 2019 (IN \$000)			
Univ. Generated Revenue	\$175,630.0	\$156,858.2	\$8,090.8
Research Focus Expenditure	\$17,723.1	\$17,723.1	\$0.0
Total Budget Authority	\$311,264.1	\$270,903.0	\$15,893.6
Gross Tuition	\$72,912.7	\$60,355.9	\$5,542.1
TVEP Awards	\$2,284.4	\$1,638.0	\$269.6
Kodiak College			
STUDENTS			
AY 18-19 Student Credit Hours	6,669	23,631	6,702
Headcount	1,389	2,441	2,235
Full-time Equivalent	221	785	223
Awards Granted	24	127	21
Fall 2018 Headcount	721	1,559	895
Full-time	237	725	152
Part-time	484	834	743
FACULTY AND STAFF—FALL 2018			
Regular Faculty	13	25	6
Adjunct Faculty	23	72	25
Staff	29	51	44
FACILITIES			
Square Feet	44,981	152,145	67,267
FINANCE—FY 2019 (IN \$000)			
Univ. Generated Revenue	\$1,677.8	\$6,115.4	\$2,887.7
Research Focus Expenditure	\$0.0	\$0.0	\$0.0
Total Budget Authority	\$5,424.1	\$13,099.8	\$5,943.5
Gross Tuition	\$1,240.1	\$4,946.6	\$828.1
TVEP Awards	\$105.2	\$157.3	\$114.2
Matanuska-Susitna College			
STUDENTS			
AY 18-19 Student Credit Hours	6,669	23,631	6,702
Headcount	1,389	2,441	2,235
Full-time Equivalent	221	785	223
Awards Granted	24	127	21
Fall 2018 Headcount	721	1,559	895
Full-time	237	725	152
Part-time	484	834	743
FACULTY AND STAFF—FALL 2018			
Regular Faculty	13	25	6
Adjunct Faculty	23	72	25
Staff	29	51	44
FACILITIES			
Square Feet	44,981	152,145	67,267
FINANCE—FY 2019 (IN \$000)			
Univ. Generated Revenue	\$1,677.8	\$6,115.4	\$2,887.7
Research Focus Expenditure	\$0.0	\$0.0	\$0.0
Total Budget Authority	\$5,424.1	\$13,099.8	\$5,943.5
Gross Tuition	\$1,240.1	\$4,946.6	\$828.1
TVEP Awards	\$105.2	\$157.3	\$114.2
Prince William Sound College			
STUDENTS			
AY 18-19 Student Credit Hours	6,669	23,631	6,702
Headcount	1,389	2,441	2,235
Full-time Equivalent	221	785	223
Awards Granted	24	127	21
Fall 2018 Headcount	721	1,559	895
Full-time	237	725	152
Part-time	484	834	743
FACULTY AND STAFF—FALL 2018			
Regular Faculty	13	25	6
Adjunct Faculty	23	72	25
Staff	29	51	44
FACILITIES			
Square Feet	44,981	152,145	67,267
FINANCE—FY 2019 (IN \$000)			
Univ. Generated Revenue	\$1,677.8	\$6,115.4	\$2,887.7
Research Focus Expenditure	\$0.0	\$0.0	\$0.0
Total Budget Authority	\$5,424.1	\$13,099.8	\$5,943.5
Gross Tuition	\$1,240.1	\$4,946.6	\$828.1
TVEP Awards	\$105.2	\$157.3	\$114.2

Sources and Notes:

- Students: UA Statewide Institutional Research (IR) Decision Support Database (DSD) data at semester closing. Student Credit Hours include auditors. Awards Granted include: Undergraduate Certificates, Associate, Bachelor, Master, Doctorate, Endorsements, Licensure, Post Graduate, Post Baccalaureate, and Graduate Certificates. Headcount is for credit students only; students who enrolled in multiple campuses have been counted only once in the UAA total.
- Faculty & Staff: UA Statewide IR DSD data at Fall Freeze. Staff includes full-time & part-time employees but does not include graduate or student assistants.
- Facilities: UAA Facilities and Campus Services.
- Finance: UAA Office of Budget. Research Focus Expenditure is defined by UA Statewide as Basic Research. TVEP stands for Technical / Vocational Education Program.

FALL 2018 ENROLLMENT SUMMARY

Course Level	UAA Total	Anchorage Campus	Kenai Peninsula	Kodiak College	Mat-Su College	PW Sound College
Student Headcount						
Total Credit Headcount	16,530.0	13,158.0	2,476.0	721.0	1,559.0	895.0
Full-time	6,651.0	5,939.0	947.0	237.0	725.0	152.0
Part-time	9,879.0	7,219.0	1,529.0	484.0	834.0	743.0
Full-time as a % of Total	40.2%	45.1%	38.2%	32.9%	46.5%	17.0%
All Students (includes credit and non-credit students)	16,714.0	13,181.0	2,601.0	757.0	1,559.0	895.0
Credit Hours						
Developmental (050-099)	3,553.0	2,346.0	591.0	117.0	457.0	42.0
Lower Division (100-299)	99,553.5	72,133.5	11,217.0	2,882.0	10,645.0	2,676.0
Upper Division (300-499)	30,201.0	29,370.0	732.0	45.0	54.0	
Professional (500-599)	3,440.0	3,298.0	123.0			19.0
Graduate (600-699)	5,438.0	5,438.0				
Credited Hours Total	142,185.5	112,585.5	12,663.0	3,044.0	11,156.0	2,737.0
Audited Hours	306.0	179.0	74.0	12.0	34.0	7.0
Enrollment (Seat Count)						
Developmental (050-099)	1,116.0	720.0	197.0	43.0	142.0	14.0
Lower Division (100-299)	35,834.0	26,048.0	3,849.0	1,057.0	3,706.0	1,174.0
Upper Division (300-499)	10,441.0	10,146.0	261.0	15.0	19.0	
Professional (500-599)	2,151.0	2,090.0	42.0			19.0
Graduate (600-699)	1,787.0	1,787.0				
Enrollment Total	51,329.0	40,791.0	4,349.0	1,115.0	3,867.0	1,207.0
Student FTE						
Developmental (050-099)	236.9	156.4	39.4	7.8	30.5	2.8
Lower Division (100-299)	6,636.9	4,808.9	747.8	192.1	709.7	178.4
Upper Division (300-499)	2,013.4	1,958.0	48.8	3.0	3.6	
Professional (500-599)	286.7	274.8	10.3			1.6
Graduate (600-699)	453.2	453.2				
Student FTE Total	9,627.0	7,651.3	846.3	202.9	743.7	182.8
Course Sections						
Developmental (050-099)	64.0	37.0	12.0	5.0	8.0	2.0
Lower Division (100-299)	1,925.0	1,261.0	247.0	95.0	237.0	85.0
Upper Division (300-499)	708.0	676.0	27.0	2.0	3.0	
Professional (500-599)	206.0	200.0	4.0			2.0
Graduate (600-699)	255.0	255.0				
Course Sections Total	3,158.0	2,429.0	290.0	102.0	248.0	89.0
Canceled Credit Courses	215.0	136.0	41.0	13.0	19.0	6.0

Source: UA Statewide Institutional Research (IR) Decision Support Database (DSD) data system at semester closing freeze.

Notes:

1. Headcount is unduplicated and includes auditors.
2. Student credit hours do not include audited hours.
3. Total Course Sections do not include cancelled sections.
4. Canceled sections are those cancelled after students enrolled.

PEER INSTITUTIONS

Arkansas Tech University

Boise State University

CUNY College of Staten Island

Ferris State University

Florida Gulf Coast University

Idaho State University

Indiana University-Purdue University - Fort Wayne

McNeese State University

Northern Kentucky University

Northwestern State University of Louisiana

Purdue University - Calumet Campus

The University of Texas at Brownsville

Troy University

University of Arkansas at Little Rock

University of West Florida

Weber State University

Western Kentucky University

Youngstown State University