



# UAA STUDENT PROFILE

## All Campuses Fall 2008

### UAA, Now . . . . . and Then

| Credit Students           | Fall 08       | Fall 98       |
|---------------------------|---------------|---------------|
| <b>Headcount</b>          | <b>19,728</b> | <b>19,336</b> |
| % Female                  | 60%           | 61%           |
| % Traditional age (18-24) | 44%           | 31%           |
| % Ethnic Minority         | 24%           | 18%           |
| % Cert/Degree-Seeking     | 58%           | 45%           |
| % Full-Time               | 38%           | 31%           |

### Distinguishing Features

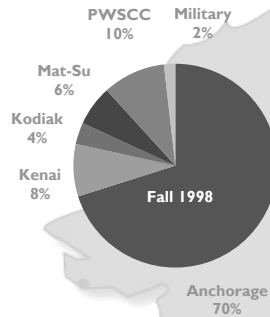
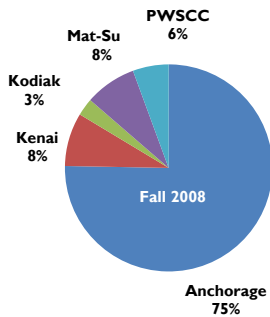
The University of Alaska Anchorage (UAA) is a **multi-campus** public university serving a diverse range of communities throughout Southcentral Alaska. The university consists of

- A large urban campus in Anchorage;
- Four community campuses (Kenai Peninsula College, Kodiak College, Matanuska-Susitna College, and the separately accredited Prince William Sound Community College);
- Extended campuses in Chugiak/Eagle River, Seward, Homer, Cordova, and the Copper Basin; and
- Military education centers at Fort Richardson and Elmendorf Air Force Base.

There are significant differences between the student profiles at each campus, reflective of their relative sizes and the communities they serve.

UAA's student profile also reflects the **dual mission** of academic excellence and open access. The fastest-growing segments of the population (particularly in Anchorage) include traditional-age students with strong high school achievement and baccalaureate degree-seeking goals. Nevertheless, the student body overall continues to be characterized by

- High percentages of part-time students
- High percentages of non degree-seeking students
- Low percentages of traditional-age students



### Matanuska-Susitna College

| Credit Students           | Fall 08      | Fall 98      |
|---------------------------|--------------|--------------|
| <b>Headcount</b>          | <b>1,636</b> | <b>1,236</b> |
| % Female                  | 65%          | 70%          |
| % Traditional age (18-24) | 44%          | 31%          |
| % Ethnic Minority         | 14%          | 10%          |
| % Cert/Degree-Seeking     | 32%          | 27%          |
| % Full-Time               | 22%          | 27%          |

### Anchorage Campus

| Credit Students           | Fall 08       | Fall 98       |
|---------------------------|---------------|---------------|
| <b>Headcount</b>          | <b>15,359</b> | <b>13,559</b> |
| % Female                  | 61%           | 62%           |
| % Traditional age (18-24) | 46%           | 36%           |
| % Ethnic Minority         | 27%           | 20%           |
| % Cert/Degree-Seeking     | 67%           | 57%           |
| % Full-Time               | 41%           | 38%           |

### Kodiak College

| Credit Students           | Fall 08    | Fall 98    |
|---------------------------|------------|------------|
| <b>Headcount</b>          | <b>559</b> | <b>665</b> |
| % Female                  | 71%        | 68%        |
| % Traditional age (18-24) | 25%        | 18%        |
| % Ethnic Minority         | 25%        | 20%        |
| % Cert/Degree-Seeking     | 22%        | 12%        |
| % Full-Time               | 9%         | 4%         |

### Prince William Sound Community College

| Credit Students           | Fall 08      | Fall 98      |
|---------------------------|--------------|--------------|
| <b>Headcount</b>          | <b>1,143</b> | <b>1,926</b> |
| % Female                  | 43%          | 50%          |
| % Traditional age (18-24) | 21%          | 11%          |
| % Ethnic Minority         | 21%          | 14%          |
| % Cert/Degree-Seeking     | 11%          | 7%           |
| % Full-Time               | 6%           | 5%           |

### Kenai Peninsula College

| Credit Students           | Fall 08      | Fall 98      |
|---------------------------|--------------|--------------|
| <b>Headcount</b>          | <b>1,699</b> | <b>1,602</b> |
| % Female                  | 59%          | 67%          |
| % Traditional age (18-24) | 41%          | 23%          |
| % Ethnic Minority         | 13%          | 9%           |
| % Cert/Degree-Seeking     | 31%          | 22%          |
| % Full-Time               | 19%          | 21%          |



INSTITUTIONAL EFFECTIVENESS  
ENGAGEMENT & ACADEMIC SUPPORT

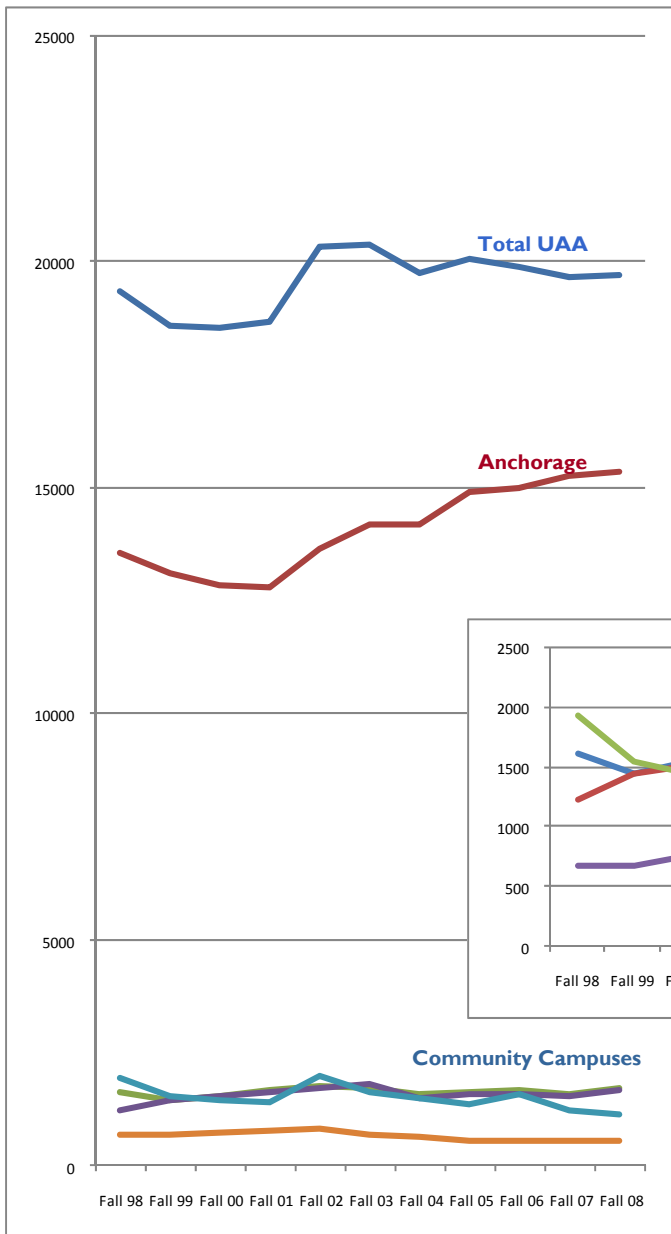
UNIVERSITY of ALASKA ANCHORAGE

Source: UAA Office of Institutional Research, Fall 2008 Closing and Fall 1998 Closing, credit students only

# Trends, by Campus

**Headcount** increased 2% overall from Fall 1998 to Fall 2008, with particularly strong increases in Anchorage (13%), at Matanuska-Susitna College (32%), and at Kenai Peninsula College (6%). Anchorage headcount now makes up over 75% of the UAA total, up from 70% in Fall 1998. During the same period, Kodiak College decreased 16% and Prince William Sound Community College decreased 41%.

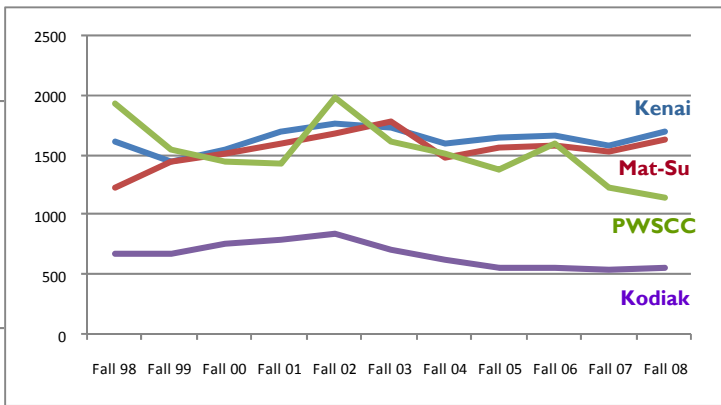
Fall Semester Headcount, By Campus



**Between Fall 1998 and Fall 2008**

|                               |      |
|-------------------------------|------|
| Mat-Su increased . . . . .    | 32%  |
| Anchorage increased . . . . . | 13%  |
| Kenai increased . . . . .     | 6%   |
| Total UAA increased . . . . . | 2%   |
| PWSCC decreased . . . . .     | -41% |
| Kodiak decreased . . . . .    | -16% |

Detail Community Campuses



Campus-specific Student Profiles are also available on our website:

[www.uaa.alaska.edu/institutionaleffectiveness](http://www.uaa.alaska.edu/institutionaleffectiveness)

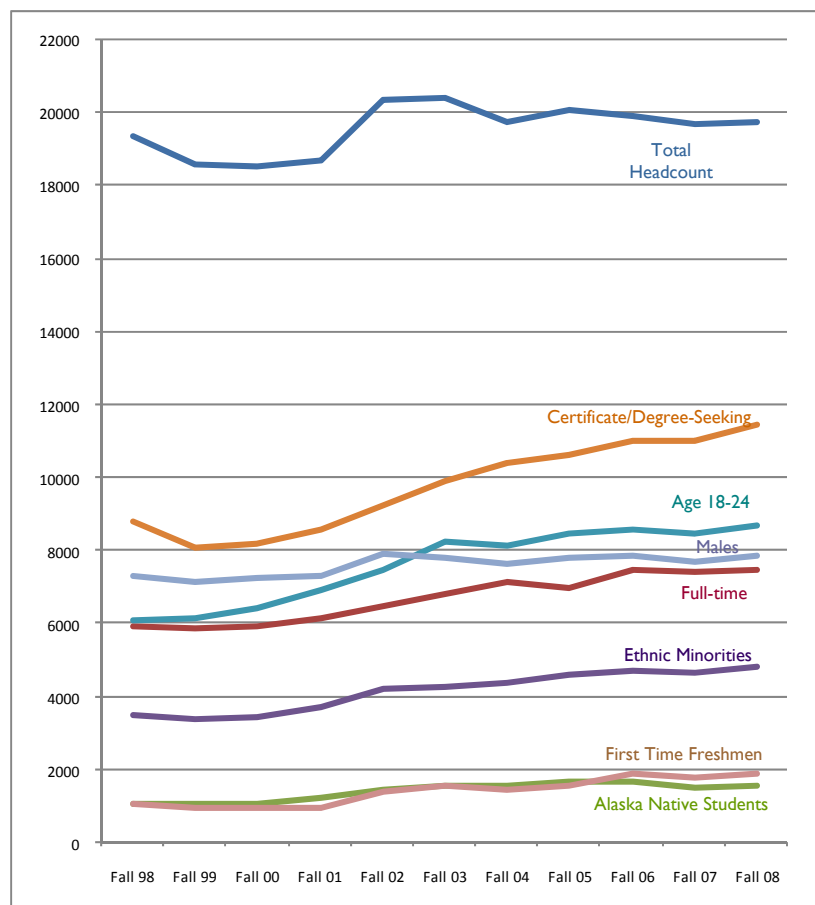
Sources: UAA Office of Institutional Research. Fall Semester Closing Reports. Credit students only.

# Trends, By Student Characteristic

- **Males** increased 8% overall between Fall 1998 and Fall 2008, while females decreased by about a half a percent.
- **Traditional age** students (18-24) increased 42% overall, with particularly strong increases in the 20-24 age group (52%). The 50-59 age group also increased 10%, and the 60 and over age group increased 29%. On the other hand, the 0-17 age group declined 7%, the 30-39 age group decreased 25% and the 40-49 age group decreased 41%.
- **Ethnic minority** students increased 37% overall, with particularly strong increases in Asian/Pacific Islanders (89%), Alaska Natives (50%), Hispanics (35%), and American Indians (1%). However, African Americans decreased by 12% over the same period.
- **White** students declined both in percentage of the student population and in real numbers, from 14,731 in Fall 1998 to 13,641 in Fall 2008, a 7% decrease over the period.
- **Degree-seeking** students increased 30%, with particularly strong increases in first-time freshmen (74%) and in Anchorage-based baccalaureate (53%) and graduate (39%) programs. Counter to these trends, undergraduate certificate and associate-level programs decreased by 8% over the ten-year period.
- **Full-time** students increased 26%, with particularly strong increases in Anchorage (23%), at Kodiak College (92%), and at Matanuska-Susitna College (9%). However, full-time students decreased at Kenai Peninsula College by 5% and at Prince William Sound Community College by 27% over the ten-year period.

| Credit Students         | Fall 98       | Fall 08       | Change    |
|-------------------------|---------------|---------------|-----------|
| <b>Headcount</b>        | <b>19,336</b> | <b>19,728</b> | <b>2%</b> |
| Male                    | 7,287 (38%)   | 7,842 (40%)   | 8%        |
| Traditional age (18-24) | 6,086 (31%)   | 8,655 (44%)   | 42%       |
| Ethnic Minority         | 3,510 (18%)   | 4,820 (24%)   | 37%       |
| Cert/Degree-Seeking     | 8,790 (45%)   | 11,448 (58%)  | 30%       |
| Full-Time               | 5,950 (31%)   | 7,472 (38%)   | 26%       |
| First-time Freshmen     | 1,078 (6%)    | 1,876 (10%)   | 74%       |

Trends for Selected Characteristics  
Fall 1998 to Fall 2008



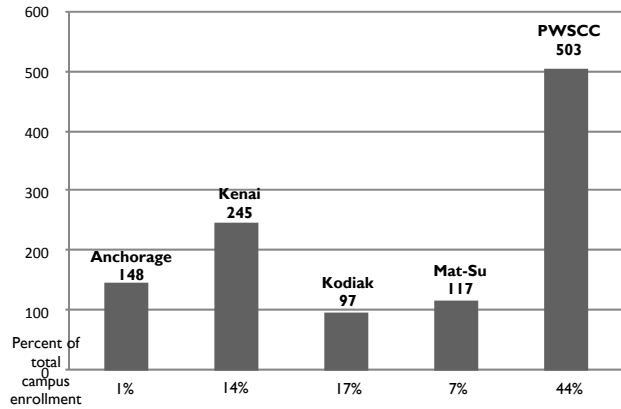
Source: UAA Office of Institutional Research. 1998-2002 data comes from Fall 2002 Closing Report (UAA Student Headcount Trend by Campus and Student Characteristic). 2003-2008 data comes from Fall Semester Closing Reports (Closing Headcount by Student Characteristic by Campus)

# Non-Credit Students

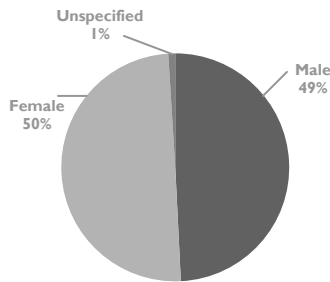
UAA also serves about a thousand students in Adult Basic Education, non-credit, and continuing education courses each fall semester. In contrast to credit students (the majority of whom are served by the Anchorage campus), the majority of non-credit students are served by the community campuses, with the largest numbers at Prince William Sound Community College and Kenai Peninsula College.

**Characteristics.** The latest available characteristics data on non-credit students comes from the 2005-06 academic year. At that time, the population of non-credit students was about equally split between males and females. Ethnically, there were greater percentages of Alaska Native/American Indian and Hispanic students and smaller percentages of African American and Asian/Pacific Islanders among non-credit students than credit students. The non-credit population also tended to be older than the credit population, with a mean age of 35.5 in AY06 as compared to 30.1 for credit students in Fall 2008.

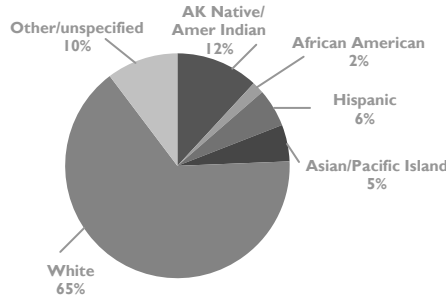
Headcount, Fall 2008



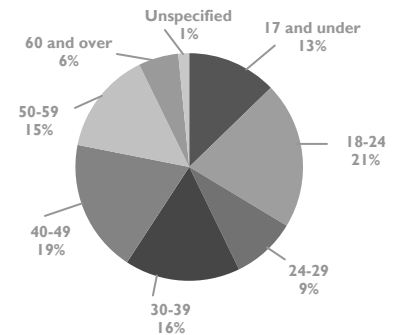
Gender



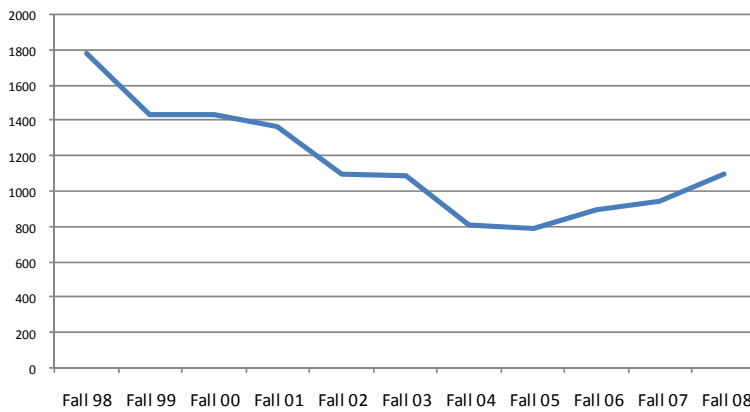
Ethnicity



Age



Headcount Trend



**Headcount trend.** The numbers of non-credit students declined 56% between Fall 1998 and Fall 2005, from a high of 1,779 to a low of 790. They have rebounded 39% in the three years since, for a total of 1,097 in Fall 2008. The overall reduction over the ten-year period is 38%.

Sources: UAA Office of Institutional Research. Headcounts and trends come from Fall Semester Closing Reports, Fall 1998 to Fall 2008, Closing Summary. Characteristics come from Mission Contribution Series, Continuing Education Courses, Table CE-4, academic year 2005-06 (latest available data).

**Fall 2008 Profile**

Produced by

Office of Institutional Effectiveness, Engagement, and Academic Support

[www.uaa.alaska.edu/institutionaleffectiveness](http://www.uaa.alaska.edu/institutionaleffectiveness)

February 16, 2009