



Institutional Research
UNIVERSITY of ALASKA ANCHORAGE

November 2020

TO: UAA Community
FROM: Erin J. Holmes, PhD
Associate Vice Provost, Institutional Research
SUBJECT: 2019-20 Fact Book

This is the 2019-20 Fact Book for your use. An electronic version of the Fact Book is available at Institutional Research's public website (www.uaa.alaska.edu/ir) and its *IR-Reports* site on SharePoint. Also available at the site are detailed electronic reports on a range of topics.

Please feel free to contact the Office of Institutional Research with any questions, comments or suggestions you may have. Additionally, if you see items that need correction or would like to see other information, please let us know. Your feedback helps Institutional Research provide the information you need for your decision-making and planning.



UNIVERSITY *of* ALASKA ANCHORAGE

FACT BOOK 2019-20

November 2020

OFFICE OF INSTITUTIONAL RESEARCH

3211 Providence Drive, BOC3 - Suite 340

Anchorage, AK 99508

Phone: 907.786.1493

Fax: 907.786.1499

Dr. Erin Holmes, *Associate Vice Provost*

Yuan-Fang Dong, *Senior Research Associate*

Coy Gullett, *Director of Business Intelligence*

Ginger Mongeau, *Research Associate*

John Zetterman, *System Architect*

Sara Juday, *Writer/Editor/Graphic Designer*

Ester Bayne, *Research Assistant*

Unless otherwise noted, all numbers included in this Fact Book were compiled and produced by UAA's Office of Institutional Research using official closing freeze data in the UA Decision Support Database (DSD) data system, and are reported for University of Alaska. For data reported at the statewide system level (University of Alaska), please see UA in Review, produced by the University of Alaska Data Strategy and Institutional Research. This report can be viewed at the following link: <http://www.alaska.edu/swbir/ir/reports/ua-in-review/>

Special Thanks for Contributions

Ryan Buchholdt
Aaron Dotson
Lauren Hartman
Chris McConnell

Cover photos by James R. Evans, UAA Advancement

Front Cover:

Top: UAA's 2019 Fall Commencement at the Alaska Airlines Center.

Lower left: Biological Sciences Sophomore Michael Martinez studies ways to isolate rare earth metals from Alaskan coal in UAA's ConocoPhillips Integrated Science Building lab.

Lower middle: Physical Therapy Assistant program students in a small group lab, one of a handful of UAA courses that continued in-person delivery in summer 2020 with smaller-than usual groups and health screenings before each class.

Lower right: Alaska Native Studies Professor Maria Williams delivers the Native land acknowledgement at UAA's 2019 Faculty and Staff Welcome at Cuddy Hall.

Back Cover:

The Balancing Arcs statue, also known as "Happy Man."

The University of Alaska is an affirmative action/equal opportunity employer and educational institution. The University of Alaska does not discriminate on the basis of race, religion, color, national origin, citizenship, age, sex, physical or mental disability, status as a protected veteran, marital status, changes in marital status, pregnancy, childbirth or related medical conditions, parenthood, sexual orientation, gender identity, political affiliation or belief, genetic information, or other legally protected status. The University's commitment to nondiscrimination, including against sex discrimination, applies to students, employees, and applicants for admission and employment. Contact information, applicable laws, and complaint procedures are included on UA's statement of nondiscrimination available at www.alaska.edu/nondiscrimination.

TABLE OF CONTENTS

INTRODUCTION

University of Alaska Anchorage Locations	2
Introduction to the 2019-20 UAA Fact Book	3
University of Alaska Anchorage Leadership	4
Organizational Structure	5
Fast Facts About UAA Campuses	6
Fall 2019 Enrollment Summary	7
UAA Peer Institutions	8

STUDENTS

STUDENT HEADCOUNT, FALL CLOSING 2019	
By Characteristics and Campus	10
By Graduate/Undergraduate Level and Characteristics - UAA Total	12
STUDENT HEADCOUNT BY CHARACTERISTICS, FALL 2015-2019	
University of Alaska Anchorage Total	14
First-time Freshman	16
STUDENT HEADCOUNT BY DECLARED PROGRAMS OF STUDY, FALL 2015-2019	
By Major, Degree Type, and Campus/College	20
LONG TERM TRENDS OF STUDENT HEADCOUNT, ACADEMIC YEARS 2011-2020	
By Campus and Term	37
APPLIED, ACCEPTED, AND ENROLLED AT UAA, FALL 2015-2019	
Undergraduate Students	38
Graduate Students	40

ENROLLMENT

STUDENT CREDIT HOURS	
By Discipline, Five-Year Trend: Fall Semesters 2015-2019	43
By Semester and Campus, Long-Term Trend, Academic Years 2001-2020	56
e-LEARNING	
Headcount, Seat Count & SCH by Origin of Courses vs. Origin of Students Admitted, Academic Years 2016-2020	58

AWARDS

DEGREE AND CERTIFICATE AWARDS CONFERRED	
By Campus Summary, Academic Years 2016-2020	63
By Award Type, Academic Years 2016-2020	64
Degree and Certificate Awards by Classification of Instructional Program (CIP), Academic Years 2016-2020	65
Long-Term Trends, Academic Years 1989-2020	66

FACULTY AND STAFF

EMPLOYEES

Employee Headcount Trends by UAA Administrative Unit, Fall 2015-2019 (All Employees)	68
Employee Headcount Trends by UAA Administrative Unit, Fall 2015-2019 (Regular and Term)	69
Employee Headcount Trends by UAA Administrative Unit, Fall 2015-2019 (Temporary)	70
Employee Characteristics by Campus, Fall 2019 (All Employees)	71
Employee Characteristics by Campus, Fall 2019 (Regular and Term)	72
Employee Characteristics by Campus, Fall 2019 (Temporary)	73

FACULTY

Regular and Term Faculty Characteristics by Campus, Fall 2019	74
Student Credit Hours Generated by Faculty Type, Fall 2019	76
Number of Course Sections Taught by Faculty Type, Fall 2019	77

FINANCE, GRANTS AND GIVING

BUDGET

Authorized State Appropriation Budget, Fiscal Years 2016-2020	80
Total Authorized Budget, Fiscal Years 2016-2020	80
Actual State Appropriation Expenditures, Fiscal Years 2015-2019	81
Total Actual Expenditures, Fiscal Years 2015-2019	81
Summary of UAA Expenditures by Functional Categories, Fiscal Years 2016-2020	82
Authorized UAA Expenditure Budget (Unrestricted) Instruction Component Only, Fiscal Years 2016-2020	84
Summary of UAA Revenue Received, Fiscal Years 2016-2020	85

RESEARCH GRANTS

Awards by University Units and Fund Agencies, Fiscal Year 2020	86
Awards by University Units and Functional Categories, Fiscal Years 2016-2020	89
Proposal Submissions by University Units and Fund Agencies, Fiscal Year 2020	92
Proposal Submissions by University Units and Functional Categories, Fiscal Years 2016-2020	95

ALUMNI GIVING

Average Dollars Contributed per Alumni Donor, Fiscal Years 1999-2020	98
Donations by Amount and Donor Type, Fiscal Years 2018-2020	99

TUITION

UAA Tuition Rate History, Fiscal Years 2017-2021	100
--	-----

DEFINITION OF TERMS

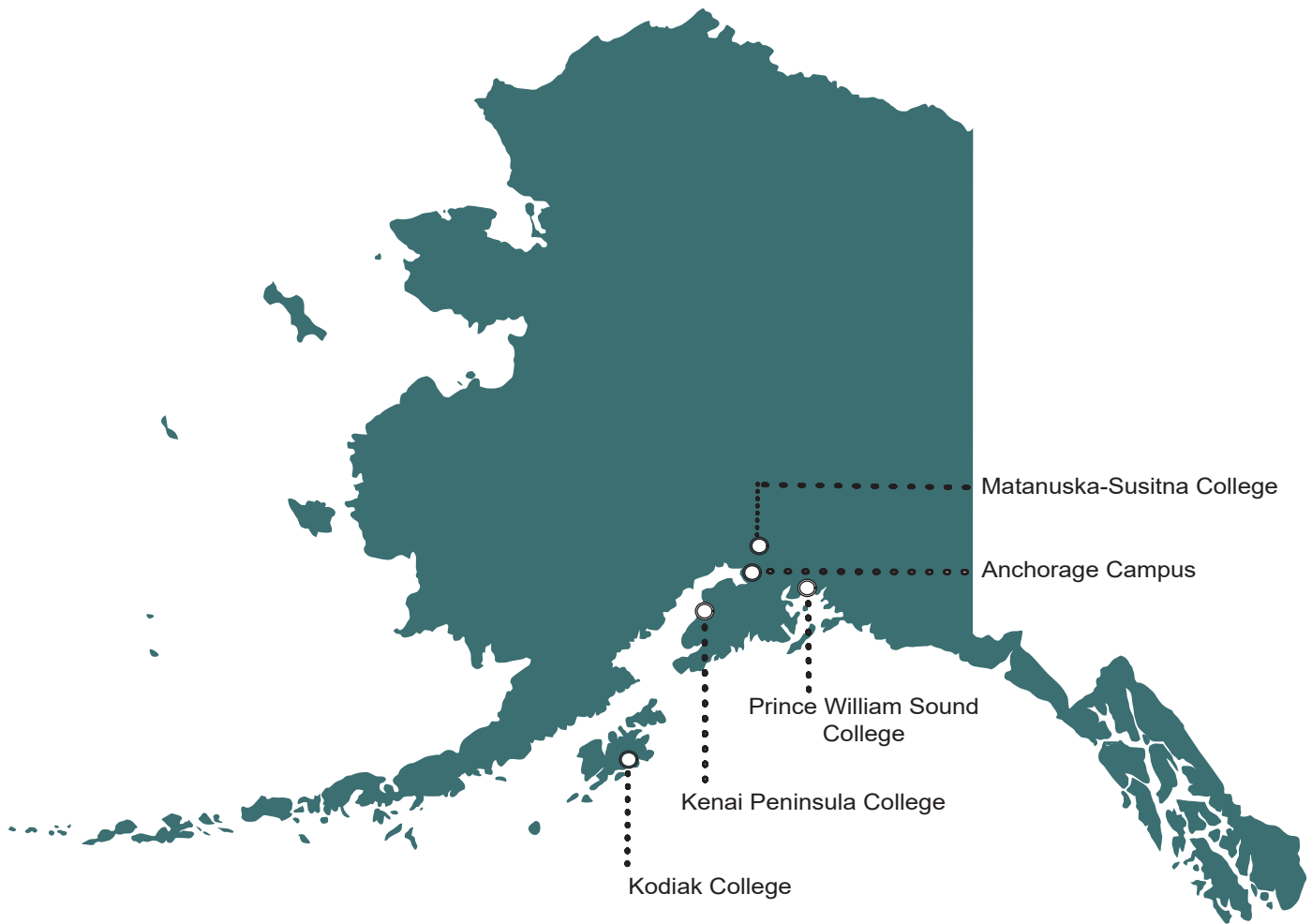
Definitions	102
-------------	-----

Introduction



UNIVERSITY *of* ALASKA ANCHORAGE

LOCATIONS



INTRODUCTION

The University of Alaska Anchorage (UAA) is a multi-campus university that serves nearly 21,000 students each year and has a service area as expansive as the state of Montana. UAA is the largest university in the state and one of three separately accredited universities in the University of Alaska Statewide System.

For a young institution, UAA has an extremely complex history. The present university was created in 1987 following a statewide reorganization that merged a university with several community colleges. In one form or another, these institutions have offered educational opportunities to the communities of southcentral Alaska since the 1950s.

Partly due to this unique history, UAA today is an open access university with one of the broadest missions in higher education. UAA offers instruction ranging from Adult Basic Education to graduate and professional education, serves both traditional and non-traditional students, and confers awards ranging from occupational endorsements to associate, baccalaureate, master's, and doctoral degrees. Through partnerships and affiliate programs, UAA also offers instruction leading to medical and other professional degrees. Through its centers and institutes, the university's research helps Alaskans to improve their health, public policy, education, training, economic development, and quality of life.

UAA is accredited by the Northwest Commission of Colleges and Universities (NWCCU). Many individual academic programs have additional specialized accreditation from professional associations and other external entities.

UAA is classified by the Carnegie Foundation for the Advancement of Teaching as a public Master's Colleges & Universities: Larger Programs, with a special classification for Community Engagement. Distinctive educational opportunities include undergraduate research, national and international exchanges, and study abroad programs. UAA has been named to the 2020-21 *Military Friendly Schools list*, the 12th consecutive year by Victory Media.

Major Campuses and Academic Units

Anchorage Campus

College of Arts & Sciences
College of Business & Public Policy
College of Engineering
College of Health
Community & Technical College
University Honors College
Graduate School*

Kenai Peninsula College

Kodiak College

Matanuska-Susitna College

Prince William Sound College

* Supports the graduate curriculum and research offered through all Colleges and Schools.



UNIVERSITY of ALASKA ANCHORAGE

LEADERSHIP

The mission of the University of Alaska Anchorage is to discover and disseminate knowledge through teaching, research, engagement, and creative expression.

Located in Anchorage and on community campuses in Southcentral Alaska, UAA is committed to serving the higher education needs of the state, its communities, and its diverse peoples.

The University of Alaska Anchorage is an open-access university with academic programs leading to occupational endorsements; undergraduate and graduate certificates; and associate, baccalaureate, and graduate degrees in a rich, diverse, and inclusive environment.

CATHY SANDEEN, *Chancellor*

DENISE RUNGE, *Provost and Executive Vice Chancellor, Academic Affairs (effective 7/2020)*

JOHN STALVEY, *Interim Provost and Executive Vice Chancellor, Academic Affairs (7/2018 to 6/2020)*

BILL JACOB, *Interim Vice Chancellor, Administrative Services (effective 6/2020)*

BEVERLY COTTON SHUFORD, *Vice Chancellor, Administrative Services (5/2018 to 5/2020)*

BRUCE SCHULTZ, *Vice Chancellor, Student Affairs*

MEGAN OLSON, *Vice Chancellor, University Advancement*

CHRISTI BELL, *Associate Vice Chancellor & Director, Business Enterprise Institute*

AARON DOTSON, *Associate Vice Chancellor, Office of Research*

JENNIFER BOOZ, *Chief Diversity Officer (effective 7/2020)*

RENEE CARTER-CHAPMAN, *Senior Vice Provost, Academic Affairs*

SARA CHILDRESS, *Director & Title IX Coordinator, Office of Equity & Compliance*

ANCHORAGE COLLEGES

College of Arts & Sciences

John Petraitis, *Interim Dean*

College of Business & Public Policy

John Nofsinger, *Interim Dean (effective 3/2020)*

Karen Markel, *Dean (6/2018 to 6/2020)*

College of Engineering

Kenrick Mock, *Interim Dean*

College of Health

Jeff Jessee, *Dean & Vice Provost of Health Programs*

Community & Technical College

Raymond Weber, *Interim Dean (effective 7/2020)*

Denise Runge, *Dean (7/2016 to 6/2020)*

Consortium Library

Steve Rollins, *Dean*

University Honors College

Claudia Lampman, *Dean (effective 7/2020)*

John Mouracade, *Dean (8/2014 to 6/2020)*

COMMUNITY CAMPUSES

Kenai Peninsula College

Gary Turner, *Director*

Kodiak College

Jacelyn Keys, *Director (effective 8/2020)*

Betty Walters, *Interim Director (10/2018 to 7/2020)*

Matanuska-Susitna College

Talis Colberg, *Director*

Prince William Sound College

J. Dan O'Connor, *Director*

UNIVERSITY GOVERNANCE

Faculty Senate

Kelly Smith, *President, 2020-21*

Scott Downing, *President, 2019-20*

Staff Council

Dawn Humenik, *Co-President, 2020-21*

Tania Rowe, *Co-President, 2019-21*

John Moore, *Past Co-President, 2020-21*

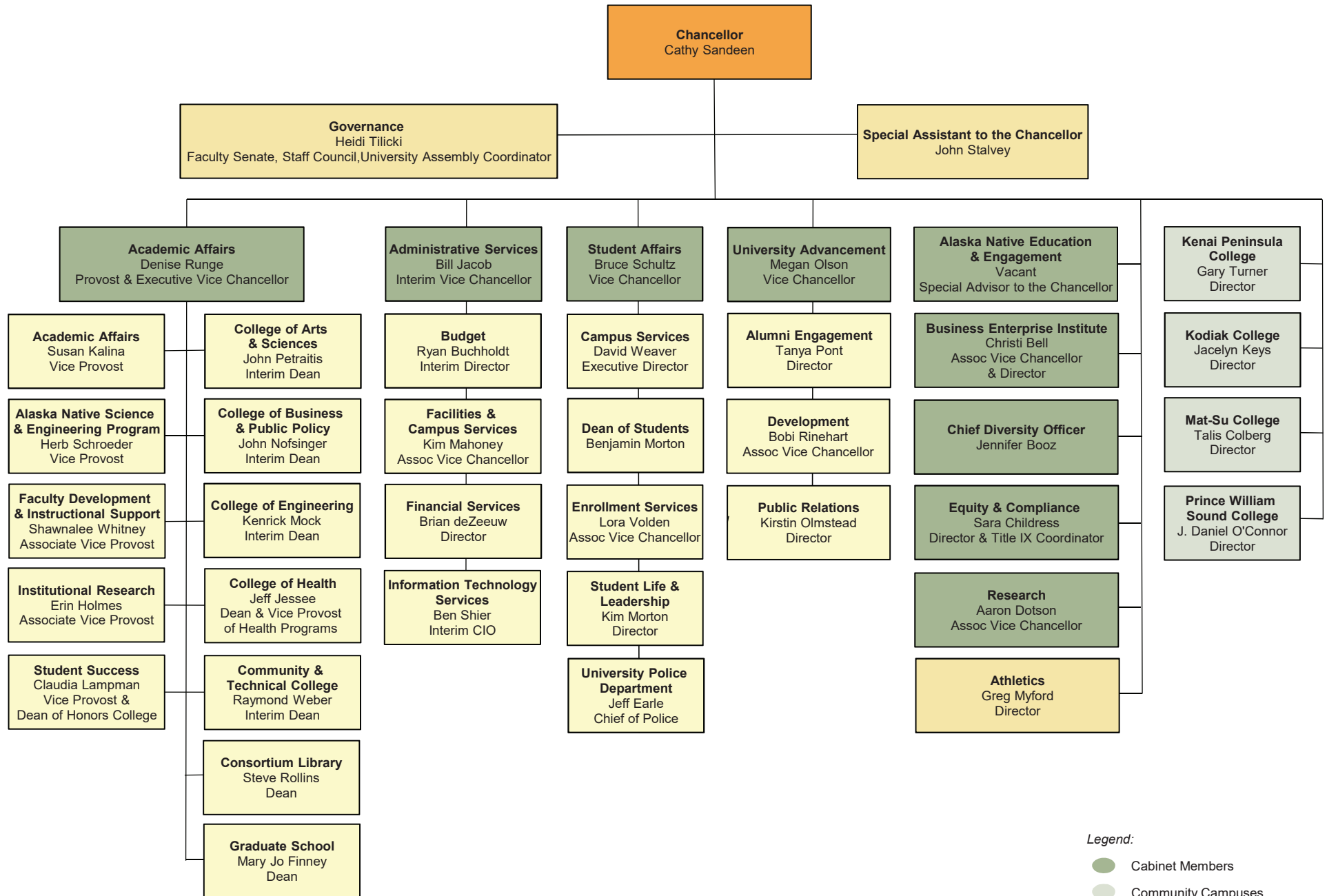
USUAA Student Government

Brooke Hansen, *President, 2020-21*

Jamie Bagley, *President, Spring 2020*

Clare Baldwin, *President, Fall 2019*

ORGANIZATIONAL STRUCTURE



Legend:

● Cabinet Members

● Community Campuses

FAST FACTS

UAA TOTAL

STUDENTS

AY 19-20 Student Credit Hours	266,473
Headcount	20,974
Full-time Equivalent	9,062
Awards Granted	2,339
Fall 2019 Headcount	14,989
Full-time	5,679
Part-time	9,310

FACULTY AND STAFF - FALL 2019

Regular Faculty	557
Adjunct Faculty	465
Staff	1,151

FACILITIES

Square Feet	3,342,007
-------------	-----------

FINANCE - FY 2020 (IN \$000)

Univ. Generated Revenue	\$162,205.6
Research Focus Expenditure	\$19,652.1
Total Budget Authority	\$287,884.7
Gross Tuition	\$66,779.3
TVEP Awards	\$2,465.4

Anchorage Campus

STUDENTS

AY 19-20 Student Credit Hours	212,763
Headcount	17,172
Full-time Equivalent	7,276
Awards Granted	2,097
Fall 2019 Headcount	11,879
Full-time	5,105
Part-time	6,774

FACULTY AND STAFF - FALL 2019

Regular Faculty	483
Adjunct Faculty	281
Staff	945

FACILITIES

Square Feet	2,894,400
-------------	-----------

FINANCE - FY 2020 (IN \$000)

Univ. Generated Revenue	\$145,294.0
Research Focus Expenditure	\$19,652.1
Total Budget Authority	\$251,260.5
Gross Tuition	\$55,419.7
TVEP Awards	\$1,932.9

Kenai Peninsula College

STUDENTS

AY 19-20 Student Credit Hours	22,886
Headcount	3,579
Full-time Equivalent	760
Awards Granted	85
Fall 2019 Headcount	2,142
Full-time	702
Part-time	1,440

FACULTY AND STAFF - FALL 2019

Regular Faculty	32
Adjunct Faculty	83
Staff	91

FACILITIES

Square Feet	183,214
-------------	---------

FINANCE - FY 2020 (IN \$000)

Univ. Generated Revenue	\$7,544.3
Research Focus Expenditure	\$0.0
Total Budget Authority	\$14,723.7
Gross Tuition	\$5,064.1
TVEP Awards	\$189.5

Kodiak College

STUDENTS

AY 19-20 Student Credit Hours	5,869
Headcount	1,204
Full-time Equivalent	196
Awards Granted	27
Fall 2019 Headcount	641
Full-time	202
Part-time	439

FACULTY AND STAFF - FALL 2019

Regular Faculty	13
Adjunct Faculty	16
Staff	26

FACILITIES

Square Feet	44,981
-------------	--------

FINANCE - FY 2020 (IN \$000)

Univ. Generated Revenue	\$1,657.7
Research Focus Expenditure	\$0.0
Total Budget Authority	\$5,331.1
Gross Tuition	\$1,230.1
TVEP Awards	\$70.4

Matanuska-Susitna College

STUDENTS

AY 19-20 Student Credit Hours	19,691
Headcount	2,150
Full-time Equivalent	655
Awards Granted	114
Fall 2019 Headcount	1,409
Full-time	577
Part-time	832

FACULTY AND STAFF - FALL 2019

Regular Faculty	22
Adjunct Faculty	59
Staff	47

FACILITIES

Square Feet	152,145
-------------	---------

FINANCE - FY 2020 (IN \$000)

Univ. Generated Revenue	\$5,176.7
Research Focus Expenditure	\$0.0
Total Budget Authority	\$11,147.5
Gross Tuition	\$4,252.3
TVEP Awards	\$193.1

Prince William Sound College

STUDENTS

AY 19-20 Student Credit Hours	5,264
Headcount	1,229
Full-time Equivalent	176
Awards Granted	16
Fall 2019 Headcount	821
Full-time	130
Part-time	691

FACULTY AND STAFF - FALL 2019

Regular Faculty	7
Adjunct Faculty	26
Staff	42

FACILITIES

Square Feet	67,267
-------------	--------

FINANCE - FY 2020 (IN \$000)

Univ. Generated Revenue	\$2,532.8
Research Focus Expenditure	\$0.0
Total Budget Authority	\$5,421.9
Gross Tuition	\$813.1
TVEP Awards	\$79.5

Sources and Notes:

Students: UAA Data Strategy and Institutional Research (DSIR) Decision Support Database (DSD) data at semester closing. Student Credit Hours include auditors. Awards Granted include: Undergraduate Certificates, Associate, Bachelor, Master, Doctorate, Endorsements, Licensure, Post Graduate, Post Baccalaureate, and Graduate Certificates. Headcount is for credit students only; students who enrolled in multiple campuses have been counted only once in the UAA total.

Faculty & Staff: UAA Data Strategy and Institutional Research DSD data at Fall Freeze. Staff includes full-time & part-time employees but does not include graduate or student assistants.

Facilities: UAA Facilities and Campus Services.

Finance: UAA Office of Budget. Research Focus Expenditure is defined by UA Statewide as Basic Research. TVEP stands for Technical/Vocational Education Program.

FALL 2019 ENROLLMENT SUMMARY

Course Level	UAA Total	Anchorage Campus	Kenai Peninsula	Kodiak College	Mat-Su College	PW Sound College
Student Headcount						
Total Credit Headcount	14,989.0	11,879.0	2,142.0	641.0	1,409.0	821.0
Full-time	5,679.0	5,105.0	702.0	202.0	577.0	130.0
Part-time	9,310.0	6,774.0	1,440.0	439.0	832.0	691.0
Full-time as a % of Total	37.9%	43.0%	32.8%	31.5%	41.0%	15.8%
All Students (includes credit and non-credit students)	15,174.0	11,905.0	2,259.0	683.0	1,409.0	821.0
Credit Hours						
Developmental (050-099)	2,789.0	1,825.0	537.0	88.0	333.0	6.0
Lower Division (100-299)	86,265.5	61,886.0	9,722.0	2,726.0	9,313.0	2,618.5
Upper Division (300-499)	26,628.0	26,078.0	496.0		54.0	
Professional (500-599)	4,431.0	4,389.0	42.0			
Graduate (600-699)	4,527.0	4,527.0				
Credit Hours Total	124,640.5	98,705.0	10,797.0	2,814.0	9,700.0	2,624.5
Audited Hours	169.0	95.0	54.0	3.0	13.0	4.0
Enrollment (Seat Count)						
Developmental (050-099)	890.0	568.0	180.0	33.0	106.0	3.0
Lower Division (100-299)	31,177.0	22,490.0	3,370.0	984.0	3,198.0	1,135.0
Upper Division (300-499)	9,266.0	9,065.0	183.0		18.0	
Professional (500-599)	2,610.0	2,568.0	42.0			
Graduate (600-699)	1,478.0	1,478.0				
Enrollment Total	45,421.0	36,169.0	3,775.0	1,017.0	3,322.0	1,138.0
Student FTE						
Developmental (050-099)	185.9	121.7	35.8	5.9	22.2	0.4
Lower Division (100-299)	5,751.0	4,125.7	648.1	181.7	620.9	174.6
Upper Division (300-499)	1,775.2	1,738.5	33.1		3.6	
Professional (500-599)	369.3	365.8	3.5			
Graduate (600-699)	377.3	377.3				
Student FTE Total	8,458.7	6,728.9	720.5	187.6	646.7	175.0
Course Sections						
Developmental (050-099)	45.0	24.0	10.0	4.0	6.0	1.0
Lower Division (100-299)	1,675.0	1,082.0	237.0	87.0	197.0	72.0
Upper Division (300-499)	632.0	606.0	23.0		3.0	
Professional (500-599)	240.0	237.0	3.0			
Graduate (600-699)	240.0	240.0				
Course Sections Total	2,832.0	2,189.0	273.0	91.0	206.0	73.0
Canceled Credit Sections	312.0	199.0	45.0	16.0	42.0	10.0

Source: UA Data Strategy and Institutional Research (DSIR) Decision Support Database (DSD) data system at semester closing freeze.

Notes:

1. Headcount is unduplicated and includes auditors.
2. Student credit hours do not include audited hours.
3. Total Course Sections do not include canceled sections.
4. Canceled sections are those canceled after students enrolled.

PEER INSTITUTIONS

Arkansas Tech University

Boise State University

CUNY College of Staten Island

Ferris State University

Florida Gulf Coast University

Idaho State University

Indiana University-Purdue University - Fort Wayne

McNeese State University

Northern Kentucky University

Northwestern State University of Louisiana

Purdue University - Calumet Campus

The University of Texas at Brownsville

Troy University

University of Arkansas at Little Rock

University of West Florida

Weber State University

Western Kentucky University

Youngstown State University