

# STUDENT INFORMATION

UNIVERSITY OF ALASKA ANCHORAGE  
OFFICE OF INSTITUTIONAL RESEARCH

---

SUMMER 2014 CLOSING



**Headcount, Credit Hours, Student FTE, and Course Sections by Campus**  
**UAA Summer 2014 Closing Summary**

			UAA Total	Anchorage Campus	Kenai Peninsula College	Kodiak College	Mat-Su College	Prince William Sound
<b>Student Headcount</b>								
<b>Total Credit Headcount</b>			<b>7,678</b>	<b>6,601</b>	<b>800</b>	<b>223</b>	<b>464</b>	<b>199</b>
Full-time			503.0	388.0	14.0	0.0	11.0	1.0
Part-time			7,175.0	6,213.0	786.0	223.0	453.0	198.0
Full-time as a % of Total			6.6%	5.9%	1.8%	0.0%	2.4%	0.5%
<b>Total Student Headcount</b> <small>(includes both credit and non-credit students)</small>			<b>7,810.0</b>	<b>6,717.0</b>	<b>806.0</b>	<b>225.0</b>	<b>472.0</b>	<b>199.0</b>
<b>Credit Hours</b>								
Developmental	(050-099)	1,279.0	769.0	294.0			168.0	48.0
Lower Division	(100-299)	21,430.0	15,763.5	2,647.0	690.0		1,944.0	385.5
Upper Division	(300-499)	7,345.5	7,340.5	5.0				
Professional	(500-599)	3,545.0	3,455.0	84.0	6.0			
Graduate	(600-699)	2,166.0	2,163.0		3.0			
<b>Total Credit Hours</b>			<b>35,765.5</b>	<b>29,491.0</b>	<b>3,030.0</b>	<b>699.0</b>	<b>2,112.0</b>	<b>433.5</b>
Audited Hours			132.0	116.0	6.0	2.0	8.0	0.0
<b>Enrollment (Seat Count)</b>								
Developmental	(050-099)	509.0	258.0	99.0			56.0	96.0
Lower Division	(100-299)	7,313.0	5,382.0	889.0	266.0		640.0	136.0
Upper Division	(300-499)	2,421.0	2,418.0	3.0				
Professional	(500-599)	2,198.0	2,168.0	28.0	2.0			
Graduate	(600-699)	755.0	754.0		1.0			
<b>Total Enrollment</b>			<b>13,196.0</b>	<b>10,980.0</b>	<b>1,019.0</b>	<b>269.0</b>	<b>696.0</b>	<b>232.0</b>
<b>Student FTE</b>								
Developmental	(050-099)	85.3	51.3	19.6			11.2	3.2
Lower Division	(100-299)	1,428.7	1,050.9	176.5	46.0		129.6	25.7
Upper Division	(300-499)	489.7	489.4	0.3				
Professional	(500-599)	295.4	287.9	7.0	0.5			
Graduate	(600-699)	180.5	180.3		0.3			
<b>Total Student FTE</b>			<b>2,479.6</b>	<b>2,059.7</b>	<b>203.4</b>	<b>46.8</b>	<b>140.8</b>	<b>28.9</b>
<b>Course Sections</b>								
Developmental	(050-099)	41	16	7			3	15
Lower Division	(100-299)	535	350	65	26		69	25
Upper Division	(300-499)	222	218	3	1			
Professional	(500-599)	222	218	3	1			
Graduate	(600-699)	184	183		1			
ABE		3		1	2			
CEU		26	18	2			4	2
Non-Credit		6	4	1			1	
<b>Total Course Section</b>			<b>1,239</b>	<b>1,007</b>	<b>82</b>	<b>31</b>	<b>77</b>	<b>42</b>
<b>Cancelled Credit Courses</b>			<b>121</b>	<b>74</b>	<b>8</b>	<b>0</b>	<b>31</b>	<b>8</b>

Source: UA SW IR DSD data tables.

Notes: Headcount includes auditors and is unduplicated within each campus.

**HIGHLIGHTS**  
**Summer 2014 Closing Compared to Summer 2013 Closing**  
**Credit Headcount and Student Credit Hours**

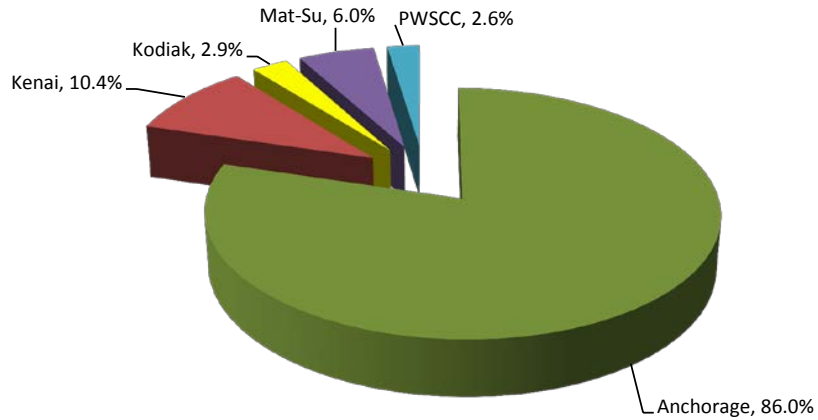
	Headcount	Student Credit Hours					
		Total	050-099 Devel	100-299 Lower	300-499 Upper	500-599 Prof	600-699 Grad
<b>Total UAA</b>							
Summer 2013	7,711	37,083.0	1,403.0	22,510.0	7,685.0	3,292.0	2,193.0
Summer 2014	7,678	35,766.0	1,279.0	21,430.0	7,346.0	3,545.0	2,166.0
% Change	-0.4%	-3.6%	-8.8%	-4.8%	-4.4%	7.7%	-1.2%
<b>Anchorage</b>							
Summer 2013	6,682	31,078.0	831.0	17,212.0	7,658.0	3,184.0	2,193.0
Summer 2014	6,601	29,491.0	769.0	15,763.5	7,340.5	3,455.0	2,163.0
% Change	-1.2%	-5.1%	-7.5%	-8.4%	-4.1%	8.5%	-1.4%
<b>Kenai</b>							
Summer 2013	747	937.0	348.0	2,423.0	21.0		
Summer 2014	800	1,019.0	294.0	2,647.0	5.0	84.0	
% Change	7.1%	8.8%	-15.5%	9.2%	-76.2%		
<b>Kodiak College</b>							
Summer 2013	263	296.0		670.0	6.0	108.0	
Summer 2014	223	269.0		690.0		6.0	3.0
% Change	-15.2%	-9.1%		3.0%	-100.0%	-94.4%	
<b>Mat-Su College</b>							
Summer 2013	473	735.0	165.0	1,919.0			
Summer 2014	464	696.0	168.0	1,944.0			
% Change	-1.9%	-5.3%	1.8%	1.3%			
<b>Prince William Sound</b>							
Summer 2013	175	193.0	58.5	286.0			
Summer 2014	199	232.0	48.0	385.5			
% Change	13.7%	20.2%	-17.9%	34.8%			

Source: UA SW IR DSD data tables.

Notes:

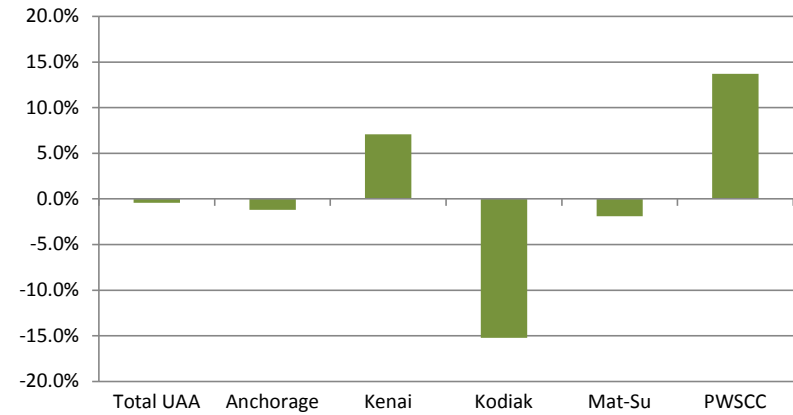
1. Headcount represents students enrolled in credit courses at the 050 level and above, including auditors.
2. Student Credit Hours do not include auditors.

**% of Total Credit Headcount by Campus  
Summer 2014 Closing**

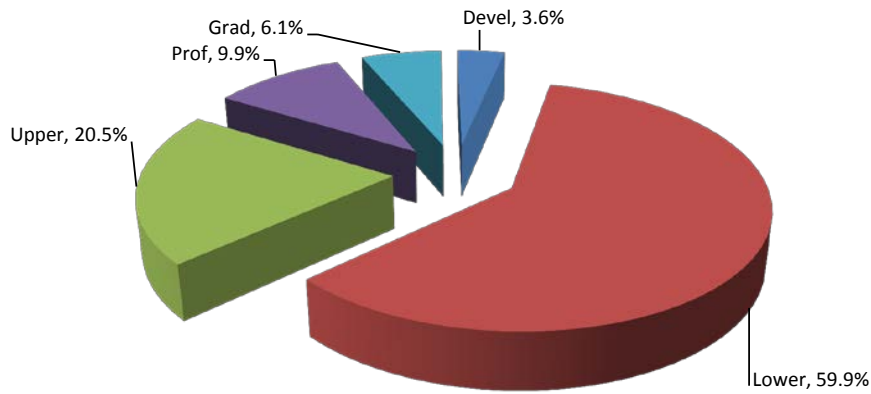


Note: Percentages may not add to 100% due to rounding.

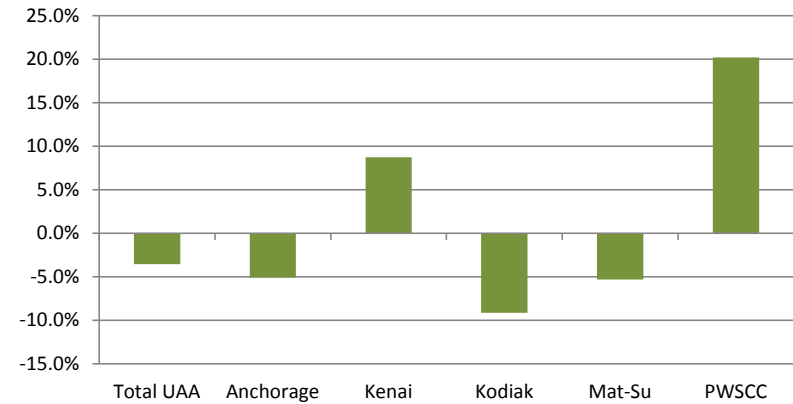
**% Change in Credit Headcount  
Summer 2013 to Summer 2014 Closing**



**UAA % Student Credit Hours by Course Level  
Summer 2014 Closing**



**% Change in Student Credit Hours  
Summer 2013 to Summer 2014 Closing**



## Headcount by Student Characteristics and Class Level UAA Summer 2014

	UAA Total		Graduate				Undergraduate	
	Total	% of Total	UAA	UAF/UAS	Total	% of Total	Total	% of Total
<b>Total</b>	<b>7,678</b>	<b>100.0%</b>	<b>562</b>	<b>64</b>	<b>626</b>	<b>100.0%</b>	<b>7,052</b>	<b>100.0%</b>
						<b>8.2%</b>		<b>91.8%</b>
<b>Admission Type</b>								
New	514	6.7%	88	2	90	14.4%	424	6.0%
Continue	5,135	66.9%	436	21	457	73.0%	4,678	66.3%
Returned	2,029	26.4%	38	41	79	12.6%	1,950	27.7%
<b>Class Standing</b>								
First-time Freshman	121	1.6%					121	1.7%
Freshman	746	9.7%					746	10.6%
Sophomore	903	11.8%					903	12.8%
Junior	918	12.0%					918	13.0%
Senior	1,743	22.7%					1,743	24.7%
Graduate First-time	88	1.1%	88		88	14.1%		
Graduate Other	471	6.1%	470		470	75.1%	1	0.0%
Licensure	4	0.1%	4		4	0.6%		
Non Degree/Other UA Programs	2,684	35.0%		64	64	10.2%	2,620	37.2%
<b>Course Load</b>								
Graduate Full-time	21	0.3%	21		21	3.4%		
Undergraduate Full-time	482	6.3%					482	6.8%
<b>TOTAL</b>	<b>503</b>	<b>6.6%</b>	<b>21</b>		<b>21</b>	<b>3.4%</b>	<b>482</b>	<b>6.8%</b>
Graduate Part-time	618	8.0%	541	64	605	96.6%	13	0.2%
Undergraduate Part-time	6,557	85.4%					6,557	93.0%
<b>TOTAL</b>	<b>7,175</b>	<b>93.4%</b>	<b>541</b>	<b>64</b>	<b>605</b>	<b>96.6%</b>	<b>6,570</b>	<b>93.2%</b>
<b>Gender</b>								
Female	4,998	65.1%	393	51	444	70.9%	4,554	64.6%
Male	2,680	34.9%	169	13	182	29.1%	2,498	35.4%
<b>Ethnicity</b>								
Non-Hispanic	7,165	93.3%	524	59	583	93.1%	6,582	93.3%
Hispanic	513	6.7%	38	5	43	6.9%	470	6.7%
<b>Race</b>								
Alaska Native	666	8.7%	31	10	41	6.5%	625	8.9%
American Indian	199	2.6%	16	2	18	2.9%	181	2.6%
African American/Black	317	4.1%	18		18	2.9%	299	4.2%
Asian	625	8.1%	29	2	31	5.0%	594	8.4%
Native Hawaiian/Pacific Isle	124	1.6%	5		5	0.8%	119	1.7%
White	4,978	64.8%	430	41	471	75.2%	4,507	63.9%
Multi/Other	7	0.1%					7	0.1%
Not Reported	762	9.9%	33	9	42	6.7%	720	10.2%

## Headcount by Student Characteristics and Class Level UAA Summer 2014

	UAA Total		Graduate				Undergraduate	
	Total	% of Total	UAA	UAF/UAS	Total	% of Total	Total	% of Total
<b>Age</b>								
0 - 17	116	1.5%					116	1.6%
18 - 18	100	1.3%					100	1.4%
19 - 19	351	4.6%					351	5.0%
20 - 24	2,198	28.6%	42	1	43	6.9%	2,155	30.6%
25 - 29	1,417	18.5%	119	7	126	20.1%	1,291	18.3%
30 - 39	1,596	20.8%	182	19	201	32.1%	1,395	19.8%
40 - 49	988	12.9%	118	20	138	22.0%	850	12.1%
50 - 59	713	9.3%	77	13	90	14.4%	623	8.8%
60 & Over	193	2.5%	24	4	28	4.5%	165	2.3%
Not Reported	6	0.1%					6	0.1%
<b>Origin</b>								
International	122	1.6%	9		9	1.4%	113	1.6%
In State	6,978	90.9%	480	63	543	86.7%	6,435	91.3%
Not Reported	15	0.2%	1		1	0.2%	14	0.2%
Out of State	563	7.3%	72	1	73	11.7%	490	6.9%
<b>Degree Level</b>								
Associate	1,170	15.2%					1,170	16.6%
Bachelor	3,202	41.7%					3,202	45.4%
Certificate	51	0.7%					51	0.7%
Doctorate	10	0.1%	10		10	1.6%		
Graduate Certificate	78	1.0%	78		78	12.5%		
Masters	471	6.1%	470		470	75.1%	1	0.0%
Post Bac. Certificate	8	0.1%					8	0.1%
Teaching Licensure	4	0.1%	4		4	0.6%		
Non Degree/Other UA Programs	2,684	35.0%		64	64	10.2%	2,620	37.2%
<b>Attempted Hours</b>								
0 - 2.9	1,605	20.9%	142	36	178	28.4%	1,427	20.2%
3 - 5.9	3,279	42.7%	261	23	284	45.4%	2,995	42.5%
6 - 8.9	1,648	21.5%	138	5	143	22.8%	1,505	21.3%
9 - 11.9	659	8.6%	19		19	3.0%	640	9.1%
12 - 14.9	386	5.0%	2		2	0.3%	384	5.4%
15 & Over	101	1.3%					101	1.4%

Source: UA SW IR DSD data tables. Compiled by UAA OIR.

1. Total UAA includes Anchorage, Kenai, Kodiak Mat-Su, and Prince William Sound Community College.
2. Headcount includes students enrolled in credit courses at the 050 level and above, including auditors.
3. Percentages may not add to 100% due to rounding.
4. First-time Freshman are students that a) have earned less than 30 credit hours and are admitted in a degree program for the first time by the admission offices or b) are, in fall semesters, students with Freshman or sophomore standing flagged as first time students or c), also in fall semesters, any students that were first time Freshman in the summer semester immediately preceding (Items b and c were added to align with federal reporting standards.).
5. Non Degree/Other UA Programs = Non Degree seeking students or Other University of Alaska degree seekers.
6. Ethnicity may be duplicated for students who identify themselves in multiple ethnicity/race categories.

## Total UAA Headcount Five Year Trend by Student Characteristics Summer 2010 - Summer 2014

	UAA Total					% Change	
	2010	2011	2012	2013	2014	'10-'14	'13-'14
<b>Total</b>	<b>8,373</b>	<b>8,642</b>	<b>8,042</b>	<b>7,711</b>	<b>7,678</b>	-8.3%	-0.4%
<b>Admission Type</b>							
New	558	729	515	487	514	-7.9%	5.5%
Continue	5,298	5,407	4,367	5,121	5,135	-3.1%	0.3%
Returned	2,517	2,506	3,160	2,103	2,029	-19.4%	-3.5%
<b>Class Standing</b>							
First-time Freshman	166	219	151	105	121	-27.1%	15.2%
Freshman	851	916	868	767	746	-12.3%	-2.7%
Sophomore	932	1,005	1,016	953	903	-3.1%	-5.2%
Junior	866	867	886	979	918	6.0%	-6.2%
Senior	1,557	1,645	1,702	1,719	1,743	11.9%	1.4%
Graduate First-time	107	121	104	93	88	-17.8%	-5.4%
Graduate Other	418	434	436	456	471	12.7%	3.3%
Licensure	7	7	5	3	4	-42.9%	33.3%
Non Degree/Other UA Programs	3,469	3,428	2,874	2,636	2,684	-22.6%	1.8%
<b>Course Load</b>							
Graduate Full-time	39	40	39	43	21	-46.2%	-51.2%
Undergraduate Full-time	521	559	558	474	482	-7.5%	1.7%
<b>TOTAL</b>	<b>560</b>	<b>599</b>	<b>597</b>	<b>517</b>	<b>503</b>	<b>-10.2%</b>	<b>-2.7%</b>
Graduate Part-time	570	588	572	564	605	6.1%	7.3%
Undergraduate Part-time	7,243	7,455	6,873	6,630	6,570	-9.3%	-0.9%
<b>TOTAL</b>	<b>7,813</b>	<b>8,043</b>	<b>7,445</b>	<b>7,194</b>	<b>7,175</b>	<b>-8.2%</b>	<b>-0.3%</b>
<b>Gender</b>							
Female	5,526	5,656	5,359	5,095	4,998	-9.6%	-1.9%
Male	2,847	2,986	2,683	2,616	2,680	-5.9%	2.4%
<b>Ethnicity</b>							
Non-Hispanic	7,880	8,132	7,576	7,201	7,165	-9.1%	-0.5%
Hispanic	493	510	466	510	513	4.1%	0.6%
<b>Race</b>							
Alaska Native	617	658	575	602	666	7.9%	10.6%
American Indian	174	193	197	204	199	14.4%	-2.5%
African American/Black	408	382	358	330	317	-22.3%	-3.9%
Asian	514	590	589	571	625	21.6%	9.5%
Native Hawaiian/Pacific Isle	105	123	117	133	124	18.1%	-6.8%
White	5,748	5,810	5,313	5,030	4,978	-13.4%	-1.0%
Multi/Other	2	7	5	7	7	250.0%	0.0%
Not Reported	805	879	888	834	762	-5.3%	-8.6%



## Total UAA Headcount Five Year Trend by Student Characteristics Summer 2010 - Summer 2014

	UAA Total					% Change	
	2010	2011	2012	2013	2014	'10-'14	'13-'14
<b>Age</b>							
0 - 17	100	119	101	123	116	16.0%	-5.7%
18 - 18	152	158	111	123	100	-34.2%	-18.7%
19 - 19	415	430	422	377	351	-15.4%	-6.9%
20 - 24	2,305	2,379	2,344	2,245	2,198	-4.6%	-2.1%
25 - 29	1,553	1,569	1,542	1,451	1,417	-8.8%	-2.3%
30 - 39	1,581	1,689	1,567	1,517	1,596	0.9%	5.2%
40 - 49	1,191	1,182	998	949	988	-17.0%	4.1%
50 - 59	882	860	733	720	713	-19.2%	-1.0%
60 & Over	190	243	224	205	193	1.6%	-5.9%
Not Reported	4	13		1	6	50.0%	500.0%
<b>Origin</b>							
In State	7,578	7,832	7,191	6,884	6,978	-7.9%	1.4%
Out of State	605	618	622	642	563	-6.9%	-12.3%
International	169	175	208	164	122	-27.8%	-25.6%
Not Reported	21	17	21	21	15	-28.6%	-28.6%
<b>Degree Level</b>							
Associate	1,132	1,308	1,233	1,224	1,170	3.4%	-4.4%
Bachelor	3,136	3,249	3,312	3,211	3,202	2.1%	-0.3%
Certificate	95	86	72	84	51	-46.3%	-39.3%
Doctorate				7	10		42.9%
Graduate Certificate	76	80	63	84	78	2.6%	-7.1%
Masters	449	475	477	458	471	4.9%	2.8%
Post Bac. Certificate	9	9	6	4	8	-11.1%	100.0%
Teaching Licensure	7	7	5	3	4	-42.9%	33.3%
Non Degree/Other UA Programs	3,469	3,428	2,874	2,636	2,684	-22.6%	1.8%
<b>Attempted Hours</b>							
0 - 2.9	1,701	1,824	1,439	1,418	1,605	-5.6%	13.2%
3 - 5.9	3,693	3,640	3,518	3,332	3,279	-11.2%	-1.6%
6 - 8.9	1,726	1,892	1,820	1,737	1,648	-4.5%	-5.1%
9 - 11.9	725	720	698	745	659	-9.1%	-11.5%
12 - 14.9	403	427	441	359	386	-4.2%	7.5%
15 & Over	125	139	126	120	101	-19.2%	-15.8%

Source: UA SW IR DSD data tables. Compiled by UAA OIR.

1. Total UAA includes Anchorage, Kenai, Kodiak, Mat-Su, and Prince William Sound Community College.
2. Headcount includes students enrolled in credit courses at the 050 level and above, including auditors.
3. Percentages may not add to 100% due to rounding.
4. First-time Freshman are students that a) have earned less than 30 credit hours and are admitted in a degree program for the first
5. Non Degree/Other UA Programs = Non Degree seeking students or Other University of Alaska degree seekers.
6. Ethnicity may be duplicated for students who identify themselves in multiple ethnicity/race categories.

## Headcount by Student Characteristics and Campus UAA Summer 2014

	UAA Total % of Total		Kenai				Prince
			Anchorage Campus	Peninsula College	Kodiak College	Mat-Su College	William Sound CC
<b>Total</b>	<b>7,678</b>	<b>100.0%</b>	<b>6,601</b>	<b>800</b>	<b>223</b>	<b>464</b>	<b>199</b>
<b>Admission Type</b>							
New	514	6.7%	388	52	10	52	52
Continue	5,135	66.9%	4,299	326	67	240	45
Returned	2,029	26.4%	1,914	422	146	172	102
<b>Class Standing</b>							
First-time Freshman	121	1.6%	81	4		22	
Freshman	746	9.7%	496	48	12	50	18
Sophomore	903	11.8%	691	46	9	39	9
Junior	918	12.0%	748	27	3	17	1
Senior	1,743	22.7%	1,562	38	2	15	
Graduate First-time	88	1.1%	88				
Graduate Other	471	6.1%	469				
Licensure	4	0.1%	4				
Non Degree/Other UA Programs	2,684	35.0%	2,462	637	197	321	171
<b>Course Load</b>							
Graduate Full-time	21	0.3%	21				
Undergraduate Full-time	482	6.3%	367	14		11	1
<b>TOTAL</b>	<b>503</b>	<b>6.6%</b>	<b>388</b>	<b>14</b>		<b>11</b>	<b>1</b>
Graduate Part-time	605	7.9%	595	3	4	2	1
Undergraduate Part-time	6,570	85.6%	5,618	783	219	451	197
<b>TOTAL</b>	<b>7,175</b>	<b>93.4%</b>	<b>6,213</b>	<b>786</b>	<b>223</b>	<b>453</b>	<b>198</b>
<b>Gender</b>							
Female	4,998	65.1%	4,353	500	166	292	105
Male	2,680	34.9%	2,248	300	57	172	94
<b>Ethnicity</b>							
Non-Hispanic	7,165	93.3%	6,149	750	210	446	192
Hispanic	513	6.7%	452	50	13	18	7
<b>Race</b>							
Alaska Native	666	8.7%	553	57	37	39	27
American Indian	199	2.6%	166	24	8	17	6
African American/Black	317	4.1%	292	28	6	19	4
Asian	625	8.1%	583	49	21	17	7
Native Hawaiian/Pacific Isle	124	1.6%	113	11	3	7	
White	4,978	64.8%	4,307	517	133	336	98
Multi/Other	7	0.1%	5		1	1	1
Not Reported	762	9.9%	582	114	14	28	56

## Headcount by Student Characteristics and Campus UAA Summer 2014

	UAA Total	% of Total	Anchorage Campus	Kenai Peninsula College	Kodiak College	Mat-Su College	Prince William Sound CC
<b>Age</b>							
0 - 17	116	1.5%	88	15	1	3	9
18 - 18	100	1.3%	71	17	7	10	3
19 - 19	351	4.6%	275	46	8	47	12
20 - 24	2,198	28.6%	1,905	266	70	147	33
25 - 29	1,417	18.5%	1,203	179	51	92	28
30 - 39	1,596	20.8%	1,365	168	54	97	46
40 - 49	988	12.9%	886	63	21	40	33
50 - 59	713	9.3%	627	39	9	25	27
60 & Over	193	2.5%	180	7	2	3	3
Not Reported	6	0.1%	1				5
<b>Origin</b>							
In State	6,978	90.9%	5,974	724	207	438	184
Out of State	563	7.3%	500	67	14	24	11
International	122	1.6%	116	8	2	1	2
Not Reported	15	0.2%	11	1		1	2
<b>Degree Level</b>							
Associate	1,170	15.2%	624	161	26	133	26
Bachelor	3,202	41.7%	2,914				
Certificate	51	0.7%	33	2		10	2
Doctorate	10	0.1%	10				
Graduate Certificate	78	1.0%	78				
Masters	471	6.1%	469				
Post Bac. Certificate	8	0.1%	7				
Teaching Licensure	4	0.1%	4				
Non Degree/Other UA Programs	2,684	35.0%	2,462	637	197	321	171
<b>Attempted Hours</b>							
0 - 2.9	1,605	20.9%	1,473	22	31	10	103
3 - 5.9	3,279	42.7%	2,938	637	169	304	79
6 - 8.9	1,648	21.5%	1,318	109	22	103	13
9 - 11.9	659	8.6%	500	18	1	36	3
12 - 14.9	386	5.0%	302	11		9	1
15 & Over	101	1.3%	70	3		2	

Source: UA SW IR DSD data tables. Compiled by UAA OIR.

**Notes:**

1. UAA Total includes Anchorage, Kenai, Kodiak, Mat-Su, and Prince William Sound Community College.
2. Headcount includes students enrolled in credit courses at the 050 level and above, including auditors.
3. Percentages may not add to 100% due to rounding.
4. See page 5 for First-time Freshman definition.
5. Non Degree/Other UA Programs = Non Degree seeking students or Other University of Alaska degree seekers.
6. Ethnicity may be duplicated for students who identify themselves in multiple ethnicity/race categories.

## Headcount by Student Characteristics and College UAA Summer 2014

	Anchorage Total	% of Total	CAS	CBPP	COH	CTC	COE	CoEng	Gen Ed
<b>Total</b>	<b>6,601</b>	<b>100.0%</b>	<b>1,204</b>	<b>608</b>	<b>1,121</b>	<b>442</b>	<b>401</b>	<b>342</b>	<b>2,483</b>
<b>Admission Type</b>									
New	388	5.9%	75	35	76	30	62	18	92
Continue	4,299	65.1%	1,017	521	896	358	267	305	935
Returned	1,914	29.0%	112	52	149	54	72	19	1,456
<b>Class Standing</b>									
		0.0%							
First-time Freshman	81	1.2%	24	4	26	11	2	5	9
Freshman	496	7.5%	156	57	134	78	21	42	8
Sophomore	691	10.5%	213	100	193	89	40	53	3
Junior	748	11.3%	233	124	198	70	38	85	
Senior	1,562	23.7%	497	251	438	184	65	126	1
Graduate First-time	88	1.3%	15	3	12		56	2	
Graduate Other	469	7.1%	66	69	120	10	175	29	
Licensure	4	0.1%					4		
Non Degree/Other UA Programs	2,462	37.3%							2,462
<b>Course Load</b>									
Graduate Full-time	21	0.3%	1	5		1	14		
Undergraduate Full-time	367	5.6%	82	39	169	31	8	12	26
<b>TOTAL</b>	<b>388</b>	<b>5.9%</b>	<b>83</b>	<b>44</b>	<b>169</b>	<b>32</b>	<b>22</b>	<b>12</b>	<b>26</b>
Graduate Part-time	595	9.0%	80	67	132	9	221	31	55
Undergraduate Part-time	5,618	85.1%	1,041	497	820	401	158	299	2,402
<b>TOTAL</b>	<b>6,213</b>	<b>94.1%</b>	<b>1,121</b>	<b>564</b>	<b>952</b>	<b>410</b>	<b>379</b>	<b>330</b>	<b>2,457</b>
<b>Gender</b>									
Female	4,353	65.9%	764	350	932	162	324	83	1,738
Male	2,248	34.1%	440	258	189	280	77	259	745
<b>Ethnicity</b>									
Non-Hispanic	6,149	93.2%	1,090	559	1,040	409	386	312	2,353
Hispanic	452	6.8%	114	49	81	33	15	30	130
<b>Race</b>									
Alaska Native	553	8.4%	105	52	95	33	32	36	200
American Indian	166	2.5%	33	13	35	17	11	5	52
African American/Black	292	4.4%	62	36	74	20	13	17	70
Asian	583	8.8%	121	94	152	44	23	53	96
Native Hawaiian/Pacific Isle	113	1.7%	22	9	35	11	3	7	26
White	4,307	65.2%	764	357	666	286	304	199	1,731
Multi/Other	5	0.1%			3			1	1
Not Reported	582	8.8%	97	47	61	31	15	24	307

## Headcount by Student Characteristics and College UAA Summer 2014

	Anchorage Total	% of Total	CAS	CBPP	COH	CTC	COE	CoEng	Gen Ed
<b>Age</b>									
0 - 17	88	1.3%	1	1			1	1	84
18 - 18	71	1.1%	14	3	11	2	1	1	39
19 - 19	275	4.2%	79	22	45	21	10	22	76
20 - 24	1,905	28.9%	572	225	380	171	90	160	307
25 - 29	1,203	18.2%	243	163	263	88	70	83	293
30 - 39	1,365	20.7%	189	124	255	94	96	54	553
40 - 49	886	13.4%	66	53	112	40	75	13	527
50 - 59	627	9.5%	27	15	46	21	53	6	459
60 & Over	180	2.7%	13	2	9	5	5	2	144
Not Reported	1	0.0%							1
<b>Origin</b>									
In State	5,974	90.5%	1,043	532	1,008	392	360	306	2,333
Out of State	500	7.6%	138	41	104	39	36	25	117
International	116	1.8%	21	34	9	10	4	11	27
Not Reported	11	0.2%	2	1		1	1		6
<b>Degree Level</b>									
Associate	624	9.5%	126	69	264	147	18		
Bachelor	2,914	44.1%	996	466	709	272	139	311	21
Certificate	33	0.5%	1	1	14	13	4		
Doctorate	10	0.2%	10						
Graduate Certificate	78	1.2%			3		75		
Masters	469	7.1%	71	72	129	10	156	31	
Post Bac. Certificate	7	0.1%			2		5		
Teaching Licensure	4	0.1%					4		
Non Degree/Other UA Programs	2,462	37.3%							2,462
<b>Attempted Hours</b>									
0 - 2.9	1,473	22.3%	46	6	52	27	107	9	1,226
3 - 5.9	2,938	44.5%	600	296	477	211	155	204	990
6 - 8.9	1,318	20.0%	316	184	290	128	106	93	204
9 - 11.9	500	7.6%	158	81	131	45	24	24	37
12 - 14.9	302	4.6%	68	33	141	22	8	11	21
15 & Over	70	1.1%	16	8	30	9	1	1	5

Source: UA SW IR DSD data tables. Compiled by UAA OIR.

**Notes:**

1. Headcount includes students enrolled in credit courses at the 050 level and above, including auditors.
2. Percentages may not add to 100% due to rounding.
3. See page 5 for First-time Freshman definition.
4. Non Degree/Other UA Programs = Non Degree seeking students or Other University of Alaska degree seekers.
5. Ethnicity may be duplicated for students who identify themselves in multiple ethnicity/race categories.
6. CAS=College of Arts & Sciences, CBPP=College of Business & Public Policy; COH=College of Health; COE=College of Education; CoEng=College of Engineering; Gen Ed=General Education

## Students by Program within Campus Admitted vs. Campus Enrolled Summer 2014

Campus Admitted		Campus Enrolled					Total
		Anchorage Campus	Kodiak College	Kenai College	Mat-Su College	Prince William	
<b>Anchorage</b>							
Accounting	AAS	30	6	3		1	40
	BBA	166	8	14	5		193
Advanced Human Service Systems	GCRT	2					2
Air Traffic Control	AAS	6					6
Anthropology	BA	24	1	2	3		30
	BS	7		1	1		9
	MA	7					7
Appl Environ Science & Technology	MO	1					1
	MS	3					3
Applied Ethics	CT1	1					1
Apprenticeship Technology	AAS	2		1		1	4
Archit & Engr Technology	AAS	11		1			12
Architectural Drafting	CT1	1					1
Art	BA	39		2	8		49
	BFA	4					4
Automotive Technology	AAS	7		1			8
Aviation Administration	AAS	8		1			9
Aviation Maint - Airframe	CT2	3		1			4
Aviation Maint - Powerplant	CT2	1					1
Aviation Maint Technology	AAS	6		2			8
Aviation Technology	BS	79	1	5	6		91
Biological Sciences	BA	19	3	3	4		29
	BS	119	1	25	11	1	157
	MS	3					3
Business Administration	MBA	1					1
Business Computer Info Systems	AAS	3	1	1	1		6
Career & Technical Education	MS	10					10
Chemistry	BS	30			6		36
Children's Behavioral Health	OEC			1			1
Cisco Cert Network Associate	OEC	1					1
Civil Engineering	BS	26		1	1		28
	MS	2					2
Clinical Psychology	MS	12					12
Clinical Social Work Practice	GCRT	1					1
Clinical-Community Psychology	PHD	10					10
Computer & Networking Tech	AAS	46	1	3			50
Computer Info Office Systems	AAS	8		1			9

## Students by Program within Campus Admitted vs. Campus Enrolled Summer 2014

Campus Admitted		Campus Enrolled					Total
		Anchorage Campus	Kodiak College	Kenai College	Mat-Su College	Prince William	
<b>Anchorage - Continued</b>							
Computer Science	BA	20		2	1		23
	BS	51		1	5		57
Construction Management	AAS	7	1	1		1	10
	BS	52	1	6	2	1	62
Counselor Education	MED	27					27
Creative Writing & Literary Arts	MFA	48					48
Creative Writing	MFA	1					1
Culinary Arts	AAS	22		1			23
Dental Assisting	AAS	11					11
	CT2	4					4
Dental Hygiene	AAS	8					8
	BS	5		1	1		7
Diagnostic Medical Sonography	AAS	5					5
Dietetics	BS	6					6
Dual Language	BA	2					2
Early Childhood	PBCT	1			1		2
Early Childhood Development	AAS	18		8	2		28
	CT1	3		1			4
Early Childhood Education	BA	77	8	12	7	1	105
Early Childhood Spec Education	MED	11					11
Economics	BA	13			1		14
	BBA	12	3				15
Education	MAT	36		1			37
Educational Leadership	MED	52					52
Elementary Ed (K-6)	PBCT	4		1			5
Elementary Education	BA	61	6	14	17	1	99
Engineering	BS	81		3	1		85
Engineering Management	MS	5					5
English	BA	50	2	7	3		62
Environment & Society	BA	9			1	1	11
	BS	17		2			19
Exploratory Major/Undeclared	BA	21	1	5	2		29
Finance	BBA	52	4	5	8		69
Fire & Emergency Services Tech	AAS	7		1			8
Fire Service Administration	AAS	1					1
Fitness Leadership	OEC	1					1
General Management	MBA	42					42

## Students by Program within Campus Admitted vs. Campus Enrolled Summer 2014

Campus Admitted		Campus Enrolled					Total
		Anchorage Campus	Kodiak College	Kenai College	Mat-Su College	Prince William	
<b>Anchorage - Continued</b>							
General Program	AA	126	6	25	15		172
Geological Science	BS	41	1	7	2	1	52
Geomatics	BS	17	1	1	2	1	22
Global Log Supply Chain Mgmt	BBA	24		3	2	2	31
Global Supply Chain Mgmt	MS	17					17
Health Sciences	BS	2					2
Heavy Duty Trans & Equipment	AAS	6	1	1			8
	CT2	2					2
History	BA	46		5	3		54
Hospitality Restaurant Management	BA	26		2	3		31
Human Services	AAS	36	3	5	1	1	46
	BHS	15		1		1	17
Inactivated Program	NDS	19		2	1		22
International Studies	BA	34	1	2	1		38
Journalism & Public Comm	BA	41		5	2		48
Justice	BA	55		5	5		65
Language Education	GCRT	31					31
Languages	BA	23		4	2	2	31
Legal Studies	BA	3					3
Liberal Studies	BLS	5		1	2		8
Logistics & Supply Chain Ops	AAS	11	1				12
	CT1	1					1
Management	BBA	144	4	18	6		172
Management Information Systems	BBA	18	2	1	1		22
Marketing	BBA	32	1	4			37
Master Teacher	MED	4					4
Mathematics	BA	7		3	2		12
	BS	28		1	2		31
Medical Assisting	AAS	19		1			20
Medical Lab Technology	AAS	3					3
Medical Laboratory Science	BS	21	1	5	1		28
Medical Office Coding	OEC	5					5
Medical Office Supply	OEC	1					1
Medical Technology	BS	15	1	4			20
Music	BA	2					2
Music Performance	BM	3					3
Music, Music Ed Emphasis	BM	8				1	9



## Students by Program within Campus Admitted vs. Campus Enrolled Summer 2014

Campus Admitted		Campus Enrolled					Total
		Anchorage Campus	Kodiak College	Kenai College	Mat-Su College	Prince William	
<b>Anchorage - Continued</b>							
Natural Sciences	BS	73		12	8	4	97
Non Degree Seeking	NDS	1,662	18	61	16	9	1,766
Nursing	AAS	10		6	2		18
Nursing Science	BS	197			1		198
	MS	45					45
Nutrition	BS	8		2			10
Office Foundations	OEC	1		1			2
Paralegal Studies	AAS	3					3
	PBCT	1					1
Pending Degree Seeking	GDP	15					15
	PDS	54		3	2	2	61
Pharmacy Technology	OEC	1					1
Philosophy	BA	13		1			14
Phlebotomist	OEC	3					3
Physical Education	BS	36	1	1	3	1	42
Political Science	BA	31		3	2		36
Pre-Global Log Supp Chain Mgt	BBA	1					1
Pre-Major Accounting	BBA	3					3
Pre-Major Civil Engineering	BS	32		2	4		38
Pre-Major Dental Assisting	AAS	4					4
Pre-Major Dental Hygiene	AAS	19		4	2		25
	BS	13			1		14
Pre-Major Dietetics	BS	34	3	8	3	1	49
Pre-Major Fine Arts	BFA	11				1	12
Pre-Major Health Science	BS	47	1	10	1		59
Pre-Major Human Services	BHS	1				1	2
Pre-Major Justice	BA	18		3	3		24
Pre-Major Languages	BA	1			1		2
Pre-Major Management	BBA	1	2				3
Pre-Major Medical Assisting	AAS	21	2	1	1		25
Pre-Major Medical Lab Tech	AAS	2	1	1			4
Pre-Major Music	BA	2					2
Pre-Major Music Performance	BM	4					4
Pre-Major Music, Music Ed Emph	BM	3				1	4
Pre-Major Nursing	AAS	80	9	27	7	5	128
Pre-Major Nursing Science	BS	249	11	70	26	5	361
Pre-Major Paralegal Studies	PBCT	1					1

## Students by Program within Campus Admitted vs. Campus Enrolled Summer 2014

Campus Admitted		Campus Enrolled					Total
		Anchorage Campus	Kodiak College	Kenai College	Mat-Su College	Prince William	
<b>Anchorage - Continued</b>							
Pre-Major Social Work	BSW	43	2	2	6		53
Pre-Major Technology	BS	15		4			19
Pre-Major Diag Med Sonography	AAS	2			1		3
Pre-Major Elementary Education	BA	1					1
Pre-Major Engineering	BS	84	1	11	5		101
Pre-Major Legal Studies	BA	7					7
Pre-Major Paralegal Studies	AAS	4		1	1		6
Pre-Major Radiologic Technology	AAS	12	1	2	1		16
Principal	GCRT	24					24
Principal (K-8, 7-12)	LIC	1					1
Professional Piloting	AAS	11		2			13
Project Management	MS	20					20
Psychology	BA	123	1	18	6	1	149
	BS	34	1	6	1		42
Public Administration	MPA	12					12
Public Health Practice	MPH	39			1		40
Radiologic Technology	AAS	17					17
Retail Management	CT1	1					1
School-Age Care: Practitioner	OEC	1					1
Small Business Administration	AAS	25	3	2	3		33
Social Work	BSW	18	2	1	1	1	23
	MSW	45					45
Sociology	BA	31	1	1	3		36
	BS	3		1			4
Special Education	GCRT	11					11
	MED	13					13
Superintendent	GCRT	8					8
Teach Cred-Special Ed	LIC	3					3
Teaching and Learning	MED	13					13
Technical Support	OEC	1					1
Technology	BS	16		3	1		20
Telecomm Elect & Computer Tech	AAS	1		1		1	3
Theatre	BA	12		3	1	1	17
Undeclared	BA	97	3	18	11	1	130

## Students by Program within Campus Admitted vs. Campus Enrolled Summer 2014

Campus Admitted		Campus Enrolled					Total
		Anchorage Campus	Kodiak College	Kenai College	Mat-Su College	Prince William	
<b>Anchorage - Continued</b>							
Weld & NonDestruct Test Tech	AAS	6			1	1	8
Welding	OEC	1					1
e-Learning	GCRT	1					1
	<b>Total</b>	<b>5,889</b>	<b>134</b>	<b>539</b>	<b>277</b>	<b>53</b>	<b>6,892</b>
<b>Kenai Peninsula</b>							
Computer Info Office Systems	AAS			2			2
Digital Art	AAS	2		1	1		4
General Business	AAS	2	1	6		1	10
General Program	AA	13	1	24	1	1	40
Industrial Proc Instrumentation	AAS			6	1	2	9
Non Degree Seeking	NDS	15		27		1	43
Occupational Safety & Health	AAS	17	1	20			38
Paramedical Technology	AAS			9			9
Pending Degree Seeking	PDS			1			1
Petroleum Technology	CT1	1		1			2
Pre-Major Paramedical Technology	AAS			4			4
Process Technology	AAS	15	1	89	3	1	109
Welding Technology	CT1			1			1
	<b>Total</b>	<b>65</b>	<b>4</b>	<b>191</b>	<b>6</b>	<b>6</b>	<b>272</b>
<b>Kodiak</b>							
Accounting	AAS		2				2
Computer Info Office Systems	AAS	3	2				5
Computer Systems Technology	AAS	1	1				2
General Business	AAS		1	1			2
General Program	AA	6	20	11			37
Non Degree Seeking	NDS	2	33				35
Pending Degree Seeking	PDS		2			1	3
Technology	AAS			1			1
	<b>Total</b>	<b>12</b>	<b>61</b>	<b>13</b>		<b>1</b>	<b>87</b>
<b>Matanuska-Susitna</b>							
Accounting	AAS	2	2	1	13		18
Bookkeeping Support	OEC				1		1
Cisco Cert Network Associate	OEC	1					1
Computer Systems Technology	AAS	2	1	1	4		8
General Business	AAS	2		1	9		12

## Students by Program within Campus Admitted vs. Campus Enrolled Summer 2014

Campus Admitted		Campus Enrolled					Total
		Anchorage Campus	Kodiak College	Kenai College	Mat-Su College	Prince William	
<b>Matanuska-Susitna - Continued</b>							
General Program	AA	24	2	11	73	4	114
Human Services	AAS	5	1	1	12	1	20
Non Degree Seeking	NDS	28		2	23		53
Paramedical Tech	AAS	2			9		11
Pending Degree Seeking	PDS				3		3
Pre-Major Paramedical Technology	AAS	1			3	1	5
Refrigeration & Heat Technology	AAS				2		2
Residential AC & Refrigeration	OEC				1		1
Small Business Administration	AAS	4			8		12
Veterinary Assisting	OEC				8		8
<b>Total</b>		<b>71</b>	<b>6</b>	<b>17</b>	<b>169</b>	<b>6</b>	<b>269</b>
<b>Prince William Sound CC</b>							
Computer Info Office Systems	AAS					4	4
Disability Services	AAS	1		1		2	4
	CT2					1	1
General Program	AA	2				18	20
Industrial Technology	AAS					1	1
	CT2					1	1
Non Degree Seeking	NDS	7				91	98
Outdoor Leadership	AAS					1	1
<b>Total</b>		<b>10</b>		<b>1</b>		<b>119</b>	<b>130</b>
<b>UAF Programs</b>							
Accounting	BBA	1					1
All Hlth Non-Major	AAS			1			1
Applied Accounting	AAS	1					1
Applied Business	AAS	3			1	1	5
Applied Linguistics	MA		2			1	3
Art	BA				1		1
Biochemistry/Molecular Biology	PHD	1					1
Biological Sciences	BA	1					1
	BS	5		2			7
Business Administration	BBA	2					2
Child Develop & Family Studies	BA	1					1
Civil Engineering	BS	4					4
Computer Engineering	BS	1			1		2

## Students by Program within Campus Admitted vs. Campus Enrolled Summer 2014

Campus Admitted		Campus Enrolled					Total
		Anchorage Campus	Kodiak College	Kenai College	Mat-Su College	Prince William	
<b>UAF Programs - Continued</b>							
Computer Science	BS	2					2
Construction Management	AAS	1		1			2
Counseling	GLI	1					1
Culinary Arts	CT2	1					1
DQ/Non Degree Seeking	NDS					1	1
Early Childhood Education	AAS	1	1	1			3
Education	MED	6		1			7
Electrical Engineering	BS	1			1		2
Elementary Education	BA	3	1		1		5
	GLI		1				1
Emergency Management	BEM	1					1
Emergency Services	AAS			1			1
English	BA			1			1
Foreign Languages	BA	1					1
General Program	AA	1					1
General Studies	BA	1					1
Geological Engineering	BS	1					1
Human Services	AAS					1	1
Indigenous Studies	PHD		1				1
Information Technology Special	AAS	1					1
Interdisciplinary Studies	BS	1					1
	PHD	1					1
Justice	BA	2					2
K-12 Art	GLI	1					1
Marine Biology	PHD	1					1
Mathematics	BA	1					1
	BS	2		1			3
Mechanical Engineering	BS	5					5
Music	BA	1					1
	BM	1					1
Non Degree Secondary Student	NDS	4		1		1	6
Non Degree Seeking	NDS	131	3	8	2	1	145
Paramedicine	AAS	1					1
Petroleum Engineering	BS	5		1			6
	MS	2					2

## Students by Program within Campus Admitted vs. Campus Enrolled Summer 2014

Campus Admitted		Campus Enrolled					Total
		Anchorage Campus	Kodiak College	Kenai College	Mat-Su College	Prince William	
<b>UAF Programs - Continued</b>							
Physics	BS	1		1			2
Pre-Nursing Qualifications	CT2	2		1	1		4
Premajor - Business Admin	BI	1					1
Process Technology	AAS	1		1			2
Psychology	BA	4					4
	BS	1					1
Resource & Applied Economics	MS	1					1
Rural Development	BA					1	1
Secondary Education	GLI				1		1
Social Work	BA	6	1	1		1	9
Sociology	BA	2					2
Teaching Credential	LIC	1					1
Theatre	BA		1				1
	<b>Total</b>	<b>221</b>	<b>11</b>	<b>23</b>	<b>9</b>	<b>8</b>	<b>272</b>
<b>UAS Programs</b>							
Biology	BS	2					2
Business Administration	AAS	1	2	1			4
	BBA	8	3	3	2	3	19
Ed Cert - Elementary Education	GLI	2					2
Ed Cert - Mathematics K-8	GLI	2					2
Ed Cert - Reading	GLI	1					1
Ed Cert - Special Education	GLI	2					2
Education	MAT	4					4
Educational Leadership	MED	1					1
Educational Technology	EDE	2					2
	MED	2					2
Elementary Education	BA			1			1
	TC	1					1
General Program	AA	3				2	5
Health Information Management	AAS	1					1
Health Science	AAS	2		1			3
Independent Design	BLA				1		1
Interdisciplinary Studies	BLA	4					4
Marine Biology	BS			1			1
Mathematics Education	MED	4		1			5
Mathematics K-8	EDE	1					1

## Students by Program within Campus Admitted vs. Campus Enrolled Summer 2014

Campus Admitted		Campus Enrolled					Total
		Anchorage Campus	Kodiak College	Kenai College	Mat-Su College	Prince William	
<b>UAS Programs - Continued</b>							
Non Degree Secondary Student	NDS	2		1			3
Non Degree Seeking	NDS	263	2	5		1	271
Nursing	CT1	1		1			2
Pre-Major Marine Biology	BS	1					1
Public Administration	MPA	3					3
Reading Specialist	MED	9		1			10
Social Science	BA	5					5
Special Education	MED	6					6
	<b>Total</b>	<b>333</b>	<b>7</b>	<b>16</b>	<b>3</b>	<b>6</b>	<b>365</b>
	<b>Total</b>	<b>6,601</b>	<b>223</b>	<b>800</b>	<b>464</b>	<b>199</b>	<b>8,287</b>

Source: UA SW IR DSD data tables. Compiled by UAA OIR.

Note: Total includes duplicate student headcount due to enrollment across multiple campuses.

## Student Credit Hours by Student Characteristics and Campus UAA Summer 2014

	UAA		Kenai				Prince William
	Total	% of Total	Anchorage	Peninsula	Kodiak	Mat-Su	Sound
<b>Total</b>	35,766	100.0%	29,491	3,030	699	2,112	434
<b>Admission Type</b>							
New	2,607	7.3%	2,013	214	34	303	43
Continue	26,417	73.9%	21,257	1,406	229	1,167	171
Returned	6,742	18.9%	6,221	1,410	436	642	220
<b>Class Standing</b>							
First-time Freshman	730	2.0%	451	27		151	
Freshman	4,174	11.7%	2,676	249	43	272	74
Sophomore	5,010	14.0%	3,609	246	48	191	38
Junior	5,245	14.7%	4,049	143	7	100	10
Senior	10,911	30.5%	9,587	165	3	117	
Graduate First-time	438	1.2%	438				
Graduate Other	1,726	4.8%	1,722				
Licensure	8	0.0%	8				
Non Degree/Other UA Programs	7,525	21.0%	6,952	2,200	598	1,281	312
<b>Course Load</b>							
Graduate Full-time	198	0.6%	198				
Undergraduate Full-time	6,347	17.7%	4,814	187		156	12
<b>TOTAL</b>	<b>6,545</b>	<b>18.3%</b>	<b>5,012</b>	<b>187</b>		<b>156</b>	<b>12</b>
Graduate Part-time	2,131	6.0%	2,103	7	12	6	3
Undergraduate Part-time	27,090	75.7%	22,377	2,836	687	1,950	419
<b>TOTAL</b>	<b>29,221</b>	<b>81.7%</b>	<b>24,480</b>	<b>2,843</b>	<b>699</b>	<b>1,956</b>	<b>422</b>
<b>Gender</b>							
Female	22,959	64.2%	19,071	1,813	521	1,262	292
Male	12,807	35.8%	10,420	1,217	178	850	142
<b>Ethnicity</b>							
Non-Hispanic	33,241	92.9%	27,293	2,832	656	2,037	423
Hispanic	2,525	7.1%	2,198	198	43	75	11
<b>Race</b>							
Alaska Native	3,140	8.8%	2,581	201	112	169	77
American Indian	932	2.6%	732	79	23	79	19
African American/Black	1,635	4.6%	1,412	106	18	89	10
Asian	3,598	10.1%	3,241	181	78	73	25
Native Hawaiian/Pacific Isle	731	2.0%	653	45	8	25	
White	22,500	62.9%	18,430	1,909	402	1,545	214
Multi/Other	37	0.1%	30		1	3	3
Not Reported	3,194	8.9%	2,412	509	57	129	87



## Student Credit Hours by Student Characteristics and Campus UAA Summer 2014

	UAA Total	% of Total	Kenai				Prince William Sound
			Anchorage	Peninsula	Kodiak	Mat-Su	
<b>Age</b>							
0 - 17	417	1.2%	323	55	4	17	18
18 - 18	473	1.3%	334	68	21	40	10
19 - 19	1,854	5.2%	1,416	159	29	218	32
20 - 24	12,313	34.4%	10,245	1,068	231	665	104
25 - 29	7,792	21.8%	6,416	685	166	453	73
30 - 39	7,164	20.0%	5,839	633	162	424	106
40 - 49	3,372	9.4%	2,868	217	54	172	61
50 - 59	1,942	5.4%	1,652	124	27	114	25
60 & Over	436	1.2%	397	21	5	9	4
Not Reported	6	0.0%	3				3
<b>Origin</b>							
In State	32,118	89.8%	26,338	2,740	655	1,990	395
Out of State	3,015	8.4%	2,563	264	38	116	34
International	586	1.6%	550	23	6	3	4
Not Reported	47	0.1%	40	3		3	1
<b>Degree Level</b>							
Associate	6,288	17.6%	3,175	818	101	798	110
Bachelor	19,544	54.6%	17,048				
Certificate	207	0.6%	123	12		33	13
Doctorate	32	0.1%	32				
Graduate Certificate	318	0.9%	318				
Masters	1,814	5.1%	1,810				
Post Bac. Certificate	31	0.1%	25				
Teaching Licensure	8	0.0%	8				
Non Degree/Other UA Programs	7,525	21.0%	6,952	2,200	598	1,281	312
<b>Attempted Hours</b>							
0 - 2.9	2,394	6.7%	2,318	22	29	11	57
3 - 5.9	10,562	29.5%	9,423	1,993	523	981	254
6 - 8.9	10,223	28.6%	8,179	666	138	634	82
9 - 11.9	6,190	17.3%	4,707	162	9	330	30
12 - 14.9	4,822	13.5%	3,788	133		108	12
15 & Over	1,576	4.4%	1,077	54		48	

Source: UA SW IR DSD data tables. Compiled by UAA OIR.

Notes:

1. UAA Total includes Anchorage, Kenai, Kodiak, Mat-Su, and Prince William Sound Community College.
2. Headcount includes students enrolled in credit courses at the 050 level and above, including auditors.
3. Percentages may not add to 100% due to rounding.
4. See page 5 for First-time Freshman definition.
5. Non Degree/Other UA Programs=Non Degree seeking students or Other University of Alaska program degree seekers.
6. Ethnicity may be duplicated for students who identify themselves in multiple ethnicity/race categories.

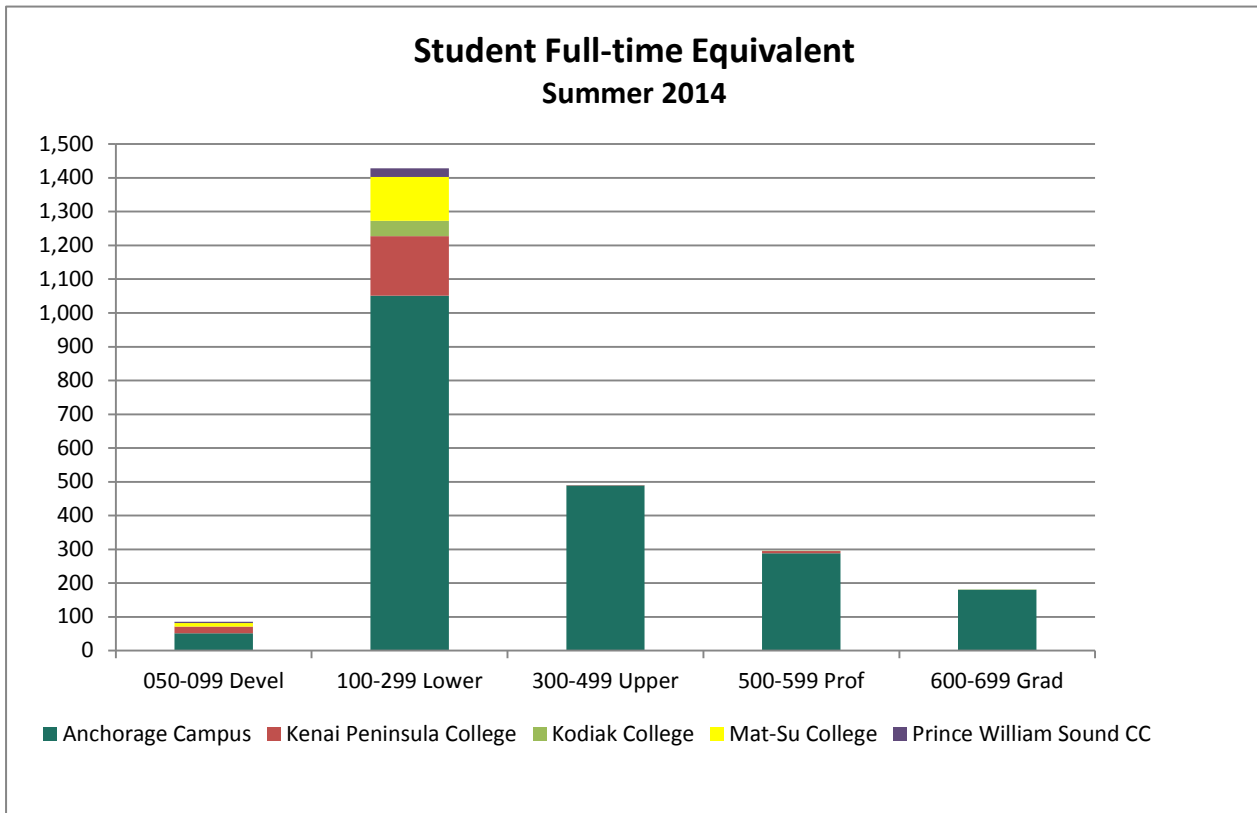
## Student FTE by Campus and by Course Level

### UAA Summer 2014 Closing

	050-099 Devel	100-299 Lower	300-499 Upper	500-599 Prof	600-699 Grad	Total
<b>UAA Total</b>	85.3	1428.7	489.7	295.4	180.5	2479.6
<b>Anchorage Campus</b>	51.3	1050.9	489.4	287.9	180.3	2059.7
<b>Kenai Peninsula College</b>	19.6	176.5	0.3	7.0		203.4
<b>Kodiak College</b>		46.0		0.5	0.3	46.8
<b>Mat-Su College</b>	11.2	129.6				140.8
<b>Prince William Sound CC</b>	3.2	25.7				28.9

Source: UA SW IR DSD data tables. Compiled by UAA OIR.

Note: FTE = Full-time Equivalent which is calculated by dividing Student Credit Hours by 15 for undergraduate students and 12 for graduate students.



## Student Credit Hour by Campus, Discipline, and Course Level UAA Summer 2014

	050-099 Devel	100-299 Lower	300-499 Upper	500-599 Prof	600-699 Grad	Total
<b>Anchorage Campus</b>						
Accounting		237.0	6.0			243.0
American Sign Language		84.0				84.0
Anthropology		522.0	27.0		3.0	552.0
Applied Environ Sci & Tech					2.0	2.0
Art		390.0	21.0	62.0		473.0
Auto/Diesel Technology		21.0				21.0
Aviation Tech/Admin/Mgmt		105.0	33.0			138.0
Aviation Tech/Prof Piloting		96.0	18.0			114.0
Biology		949.0	28.0		7.0	984.0
Biomedical Program-WWAMI					1.0	1.0
Business Administration		615.0	1,023.0		144.0	1,782.0
Career & Technical Education				42.0	25.0	67.0
Chemistry	177.0	347.0	216.0			740.0
Civic Engagement & Learning			27.0			27.0
Civil Engineering			4.0		1.0	5.0
Communication		657.0	75.0			732.0
Computer & Networking Tech		163.0				163.0
Computer Info & Office Systems		60.0				60.0
Computer Info Systems		132.0	3.0			135.0
Computer Sci & Computer Eng		50.0	19.0			69.0
Computer Science		93.0				93.0
Construction Management		6.0	63.0			69.0
Creative Writing & Lit Arts		87.0			196.0	283.0
Culinary Arts		4.0	6.0			10.0
Dance		54.0				54.0
Dental Assisting		51.0				51.0
Dental Hygiene			28.0			28.0
Diagnostic Medical Sonography			60.0			60.0
Dietetics & Nutrition		429.0	51.0			480.0
ED: Counselor Education					114.0	114.0
ED: Early Childhood		153.0				153.0
ED: Ed Dev & Leadership				197.0	228.0	425.0
ED: Foundations			152.0		211.0	363.0
ED: Research					92.0	92.0
ED: Secondary Education					81.0	81.0
ED: Special Education		45.0	33.0	130.0	157.0	365.0
Early Childhood Dev				38.0		38.0

## Student Credit Hour by Campus, Discipline, and Course Level UAA Summer 2014

	050-099 Devel	100-299 Lower	300-499 Upper	500-599 Prof	600-699 Grad	Total
<b>Anchorage Campus - Continued</b>						
Economics		720.0	129.0			849.0
Education				2,796.0		2,796.0
Education: Physical Education				80.0		80.0
Electrical Engineering			15.0			15.0
Engineering & Science Mgmt					27.0	27.0
Engineering Science		111.0	30.0			141.0
English		1,869.0	126.0			1,995.0
English as a Second Language		39.0				39.0
Environmental Studies		69.0	87.0			156.0
Geography		273.0				273.0
Geology		201.0	125.0			326.0
Guidance		75.0				75.0
Health Science		78.0			182.0	260.0
History		954.0	69.0	12.0		1,035.0
Honors			6.0			6.0
Human Services		48.0	61.0		6.0	115.0
Interdisciplinary Studies		61.0				61.0
International Studies		24.0				24.0
Japanese		40.0				40.0
Journalism & Public Comm			17.0			17.0
Justice		45.0	84.0			129.0
Legal Studies			3.0			3.0
Logistics			9.0		102.0	111.0
Mathematics	539.0	1,732.0	198.0	16.0		2,485.0
Mechanical Engineering			36.0			36.0
Medical Assisting		178.0	26.0			204.0
Medical Lab Tech		54.0	180.0			234.0
Music		124.0				124.0
Nursing		3.0				3.0
Nursing Science		357.0	2,179.0		180.0	2,716.0
Philosophy		732.0	582.0			1,314.0
Physical Ed & Recreation		44.0				44.0
Physical Ed Professional		18.0	144.0			162.0
Physical Education				6.0		6.0
Physics		173.0	8.0			181.0
Political Science		318.0	216.0			534.0
Preparatory English	53.0	195.0				248.0

## Student Credit Hour by Campus, Discipline, and Course Level UAA Summer 2014

	050-099	100-299	300-499	500-599	600-699	Total
	Devel	Lower	Upper	Prof	Grad	
<b>Anchorage Campus - Continued</b>						
Project Management				76.0	66.0	142.0
Psychology		750.0	608.0		89.0	1,447.0
Public Administration					63.0	63.0
Radiologic Technology		126.0				126.0
Russian		40.0				40.0
Social Work		156.0	93.0		186.0	435.0
Sociology		129.0	159.0			288.0
Spanish		96.0				96.0
Statistics		291.0	56.0			347.0
Technology			19.0			19.0
Theater		168.0	156.0			324.0
Women's Studies		123.0	27.0			150.0
<b>Total</b>	<b>769.0</b>	<b>15,764.0</b>	<b>7,341.0</b>	<b>3,455.0</b>	<b>2,163.0</b>	<b>29,491.0</b>
<b>Kenai Peninsula College</b>						
Accounting		45.0				45.0
Biology		93.0				93.0
Business Administration		57.0				57.0
Chemistry	18.0	370.0				388.0
Communication		219.0				219.0
Computer Info Systems		87.0				87.0
Creative Writing & Lit Arts		3.0	2.0			5.0
Dietetics & Nutrition		63.0				63.0
ED: Early Childhood		3.0				3.0
ED: Special Education				33.0		33.0
Education				51.0		51.0
English		210.0				210.0
History		90.0				90.0
Human Services		12.0				12.0
Justice		114.0				114.0
Mathematics	249.0	427.0	3.0			679.0
Music		87.0				87.0
Paramedical Technology		120.0				120.0
Physics		84.0				84.0
Preparatory English	27.0	69.0				96.0
Process Technology		147.0				147.0
Psychology		69.0				69.0
Statistics		251.0				251.0

## Student Credit Hour by Campus, Discipline, and Course Level UAA Summer 2014

	050-099 Devel	100-299 Lower	300-499 Upper	500-599 Prof	600-699 Grad	Total
<b>Anchorage Campus - Continued</b>						
Technology		27.0				27.0
<b>Total</b>	<b>294.0</b>	<b>2,647.0</b>	<b>5.0</b>	<b>84.0</b>		<b>3,030.0</b>
<b>Kodiak College</b>						
Accounting		60.0				60.0
Alaska Native Studies		44.0				44.0
Anthropology		75.0				75.0
Biology		62.0				62.0
Business Administration		99.0				99.0
Computer Info & Office Systems		21.0				21.0
Computer Info Systems		72.0				72.0
Dietetics & Nutrition		21.0				21.0
ED: Foundations					3.0	3.0
Economics		9.0				9.0
Education				6.0		6.0
English		93.0				93.0
Mathematics		36.0				36.0
Medical Assisting		66.0				66.0
Physical Ed & Recreation		8.0				8.0
Psychology		24.0				24.0
<b>Total</b>		<b>690.0</b>		<b>6.0</b>	<b>3.0</b>	<b>699.0</b>
<b>Mat-Su College</b>						
Anthropology		117.0				117.0
Art		201.0				201.0
Biology		121.0				121.0
Business Administration		153.0				153.0
Chemistry	39.0					39.0
Communication		48.0				48.0
Computer Info & Office Systems		73.0				73.0
Computer Info Systems		27.0				27.0
English		165.0				165.0
History		168.0				168.0
Human Services		45.0				45.0
Liberal Studies Integrated Core		39.0				39.0
Liberal Studies Integrated Science		30.0				30.0
Mathematics	129.0	292.0				421.0
Music		24.0				24.0
Paramedical Technology		144.0				144.0

## Student Credit Hour by Campus, Discipline, and Course Level UAA Summer 2014

	050-099	100-299	300-499	500-599	600-699	Total
	Devel	Lower	Upper	Prof	Grad	
<b>Mat-Su College - Continued</b>						
Philosophy		63.0				63.0
Physics		39.0				39.0
Psychology		132.0				132.0
Statistics		33.0				33.0
Veterinary Assisting		30.0				30.0
<b>Total</b>	<b>168.0</b>	<b>1,944.0</b>				<b>2,112.0</b>
<b>Prince William Sound CC</b>						
Alaska Native Languages		48.0				48.0
Business Administration	3.0					3.0
Communication		27.0				27.0
Computer Info & Office Systems		11.0				11.0
Dietetics & Nutrition		18.0				18.0
English		33.0				33.0
Geology		42.0				42.0
Health Science	45.0					45.0
Industrial Technology		2.0				2.0
Liberal Studies Social Science		3.0				3.0
Mathematics		67.0				67.0
Medical Assisting		30.0				30.0
Music		21.0				21.0
Psychology		45.0				45.0
Sociology		39.0				39.0
<b>Total</b>	<b>48.0</b>	<b>386.0</b>				<b>434.0</b>
<b>Total</b>	<b>1,279.0</b>	<b>21,430.0</b>	<b>7,346.0</b>	<b>3,545.0</b>	<b>2,166.0</b>	<b>35,766.0</b>

Source: UA SW IR DSD data tables. Compiled by UAA OIR.

Note: Student Credit Hours exclude audit hours.