

University of Alaska Anchorage
FACT BOOK 2015-16





October 2016

TO: UAA Community
FROM: Erin J. Holmes, PhD
Associate Vice Provost, Institutional Research
SUBJECT: 2015-16 Fact Book

This is the 2015-16 Fact Book for your use. As you will note, the Fact Book is much abbreviated this year. This shorter version is the result of both an effort to save costs and the work of the Office of Institutional Research to move to more dynamic, electronic data resources for decision makers.

Electronic versions of the Fact Book are available at Institutional Research's public webpage and its SharePoint site at <https://ir-reports.uaa.alaska.edu>. Also available at the site are detailed electronic reports for your use.

Please feel free to contact the Office of Institutional Research with any questions, comments or suggestions you may have. Additionally, if you see items that need corrections or would like to see other information, please let us know. Your feedback helps Institutional Research provide the information you need for your decision making and planning.



UNIVERSITY *of* ALASKA ANCHORAGE

FACT BOOK 2015-16

October 2016

Office of Institutional Research

3211 Providence Drive, BOC3 - Suite 340

Anchorage, AK 99508

<http://www.uaa.alaska.edu/ir/>

Phone: 907.786.1493

Fax: 907.786.1499

Dr. Erin Holmes, *Associate Vice Provost*

Yuan-Fang Dong, *Senior Research Associate*

Brian Brubaker, *Research Associate*

Ginger Mongeau, *Research Associate*

Coy Gullett, *Research Associate*

Ester Bayne, *Research Assistant*

Unless otherwise noted, all numbers included in this Fact Book were compiled and produced by UAA's Office of Institutional Research using official closing freeze data in UA DSD data system, and are reported for University of Alaska. For data reported at the statewide system level (University of Alaska), please see UA in Review, produced by the University of Alaska Statewide Institutional Research and Analysis office. This report can be viewed at the following link: <http://www.alaska.edu/swbir/ir/reports/ua-in-review/>

*Special Thanks for Contributions
and Proofreading Assistance:*

Brad Bodde
Renee Carter-Chapman
John Dede
Tana Myrstol
Sara Juday
Lonnie Mansell
Kelly Thorngren

Cover Photo by
Phil Hall, UAA Advancement
Fall 2015 Commencement

It is the policy of the University of Alaska to provide equal education and employment opportunities and to provide service and benefits to all students and employees without regard to race, color, religion, national origin, sex, age, disability, or status as a Vietnam era or disabled veteran. This policy is in accordance with the laws enforced by the Department of Education and the Department of Labor, including Presidential Executive Order 11246, as amended, Title VI and Title VII of the 1964 Civil Rights Act, Title IX of the Educational Amendments of 1972, the Public Health Service Act of 1971, the Veterans' Readjustment Assistance Act of 1974, the Vocational Rehabilitation Act of 1973, the Age Discrimination in Employment Act of 1967, the Equal Pay Act of 1963, the 14th Amendment, EEOC's Sex Discrimination Guidelines, and Alaska Statutes 18.80.220 and 14.18. Inquiries regarding application of these and other regulations should be directed to the University's Affirmative Action Director, the Office of Civil Rights (U.S. Department of Education, Washington, D.C.), or the Office of Federal Contract Compliance Programs (U.S. Department of Labor, Washington, D.C.).

TABLE OF CONTENTS

INTRODUCTION

University of Alaska Anchorage Locations	2
Introduction to the 2015-16 UAA Fact Book	3
University of Alaska Anchorage Leadership	4
Organizational Structure	5
Fast Facts About UAA Campuses	6
Fall 2015 Enrollment Summary	7
UAA Peer Institutions	8

STUDENTS

STUDENT HEADCOUNT, FALL CLOSING 2015	
By Characteristics and Campus	10
By Graduate/Undergraduate Level and Characteristics - UAA Total	12
STUDENT HEADCOUNT BY CHARACTERISTICS, FALL 2011 - 2015	
University of Alaska Anchorage Total	14
First-time Freshman	16
STUDENT HEADCOUNT BY DECLARED PROGRAMS OF STUDY, FALL 2011 - 2015	
By Major, Degree Type, and Campus/College	20
LONG TERM TRENDS	
By Campus and Term, AY 2007 - 2016	37
APPLIED, ACCEPTED, AND ENROLLED AT UAA, FALL 2011 - 2015	
Undergraduate Students	38
Graduate Students	40

ENROLLMENT

STUDENT CREDIT HOURS	
By Discipline, Five-Year Trend: Fall Closing 2011 - 2015	43
By Semester and Campus, Long-Term Trend AY 1991 - 2016	54
e-LEARNING	
Headcount, Seat Count & SCH by Origin of Courses vs. Origin of Students Admitted, AY 2012 - 2016	56

AWARDS

DEGREE AND CERTIFICATE AWARDS CONFERRED	
By Campus Summary, AY 2012 - 2016	61
By Award Type, AY 2012 - 2016	62
By High Demand Job Area Awards, AY 2012 - 2016	63
Long-Term Trend, AY 1988 - 2016	64

FACULTY AND STAFF

EMPLOYEES

Employee Headcount Trends by Governance Unit, Fall 2011 - 2015 (All Employees)	66
Employee Headcount Trends by Governance Unit, Fall 2011 - 2015 (Regular and Term)	67
Employee Headcount Trends by Governance Unit, Fall 2011 - 2015 (Temporary)	68
Employee Characteristics by Campus, Fall 2015 (All Employees)	69
Regular and Term Employee Characteristics by Campus, Fall 2015	70
Temporary Employee Characteristics by Campus, Fall 2015	71

FACULTY

Regular and Term Faculty Characteristics by Campus, Fall 2015	72
Student Credit Hours Generated by Faculty Type, Fall 2015	74
Number of Course Sections Taught by Faculty Type, Fall 2015	75

FINANCE, GRANTS AND GIVING

BUDGET

Authorized State Appropriation Budget by Campus, FY 2012 - 2016	78
Total Authorized Budget by Campus, FY 2012 - 2016	78
Actual State Appropriation Expenditures by Campus, FY 2011 - 2015	79
Total Actual Expenditures by Campus, FY 2011 - 2015	79
Summary of Revenue Received, FY 2012 - 2016	80
Summary of Expenditures by NCHEMS, FY 2012 - 2016	81
Authorized Expenditure Budget (Unrestricted) Instruction Component Only, FY 2012 - 2016	82

TUITION

Tuition Rate History, FY 2013 - 2017	83
--------------------------------------	----

RESEARCH GRANTS

Awards by University Units and Fund Agencies, FY 2016	84
Awards by University Units and Research Types, FY 2012 - 2016	87
Proposal Submissions by University Units and Fund Agencies, FY 2016	90
Proposal Submissions by University Units and Research Types, FY 2012 - 2016	93

ALUMNI GIVING

Average Dollars Contributed per Alumni Donor, FY 1998 - 2016	96
Donations by Amount and Donor Type, FY 2014 - 2016	97

DEFINITION OF TERMS

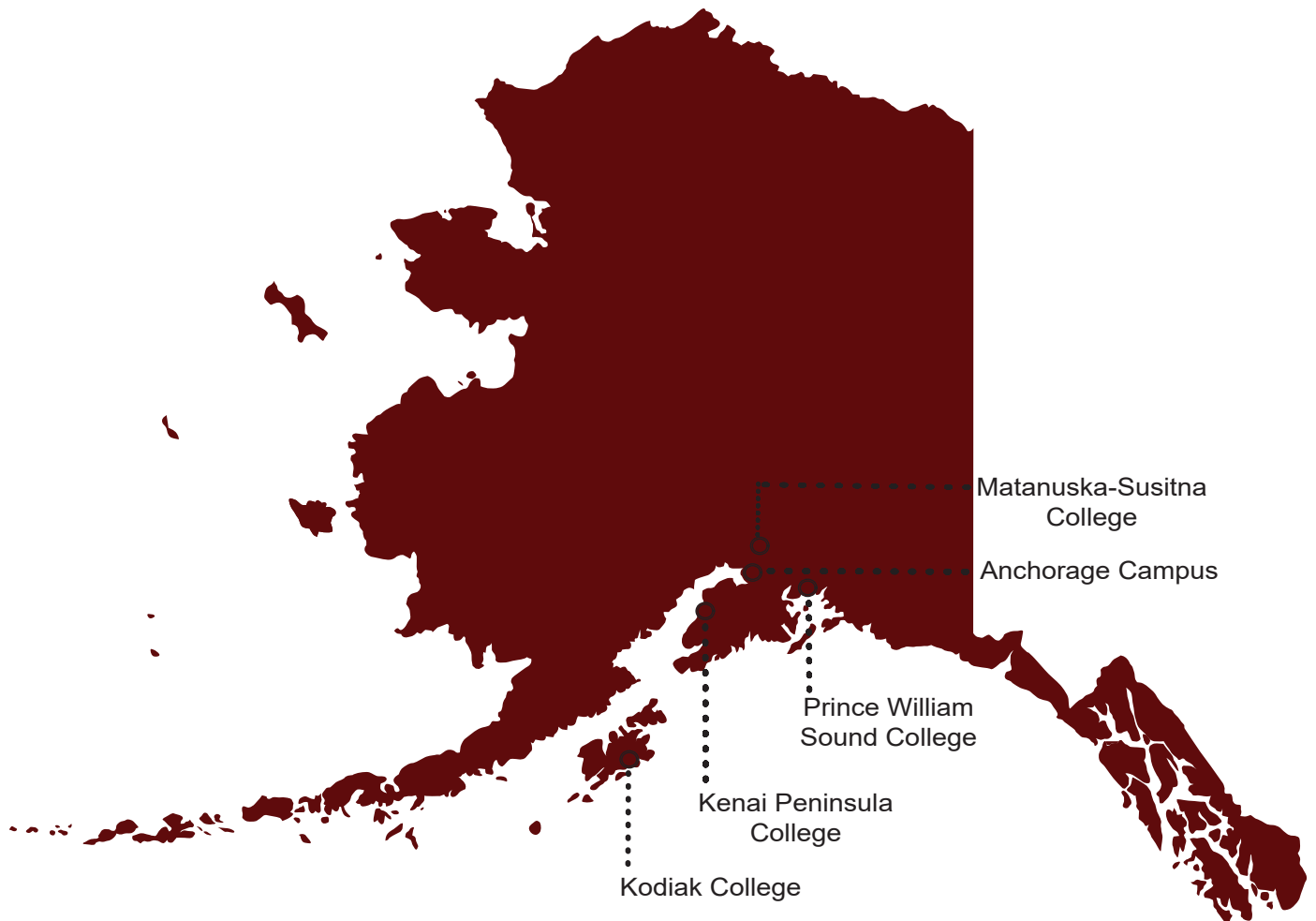
Definitions	100
-------------	-----

Introduction



UNIVERSITY *of* ALASKA ANCHORAGE

LOCATIONS



INTRODUCTION

The University of Alaska Anchorage (UAA) is a multi-campus university with a combined enrollment of 19,000 students and a service area as expansive as the state of Montana. UAA is the largest university in the state and one of three universities in the University of Alaska Statewide System.

For a young institution, UAA has an extremely complex history. The present university was created in 1987 following a statewide reorganization that merged a university with several community colleges. In one form or another, these institutions have offered educational opportunities to the communities of southcentral Alaska since the 1950s.

Partly due to this unique history, UAA today is an open access university with one of the broadest missions in higher education. UAA offers instruction ranging from Adult Basic Education to graduate and professional education, serves both traditional and non-traditional students, and confers awards ranging from occupational endorsements to associate, baccalaureate, master's, and doctoral degrees. Through partnerships and affiliate programs, UAA also offers instruction leading to medical and other professional degrees. Through its centers and institutes, the university's research helps Alaskans to improve their health, public policy, education, training, economic development, and quality of life.

UAA is accredited by the Northwest Commission of Colleges and Universities (NWCCU). Many individual academic programs have additional program accreditation from professional associations and other external entities.

UAA is classified by the Carnegie Foundation for the Advancement of Teaching as a public Master's Colleges & Universities: Larger Programs, with a special classification for Community Engagement. Distinctive educational opportunities include undergraduate research, national and international exchanges, and study abroad programs. Victory Media designated UAA a *Military Friendly School* for the seventh consecutive year.

Major Campuses and Academic Units

Anchorage Campus

- College of Arts & Sciences
- College of Business & Public Policy
- College of Education
- College of Engineering
- College of Health
- Community & Technical College
- University Honors College
- Graduate School*

Kenai Peninsula College

Kodiak College

Matanuska-Susitna College

Prince William Sound College

* Supports the graduate curriculum and research offered through Colleges and Schools



UNIVERSITY of ALASKA ANCHORAGE

LEADERSHIP

The mission of the University of Alaska Anchorage is to discover and disseminate knowledge through teaching, research, engagement, and creative expression. Located in Anchorage and on community campuses in Southcentral Alaska, UAA is committed to serving the higher education needs of the state, its communities, and its diverse peoples. The University of Alaska Anchorage is an open access university with academic programs leading to occupational endorsements; undergraduate and graduate certificates; and associate, baccalaureate, and graduate degrees in a rich, diverse, and inclusive environment.

TOM CASE, *Chancellor*

SAM GINGERICH, *Provost and Executive Vice Chancellor, Academic Affairs*

WILLIAM SPINDLE, *Vice Chancellor, Administrative Services*

BRUCE SCHULTZ, *Vice Chancellor, Student Affairs*

MEGAN OLSON, *Vice Chancellor, University Advancement*

RENEE CARTER-CHAPMAN, *Senior Vice Provost, Academic Affairs*

ANCHORAGE COLLEGES

College of Arts & Sciences

John Stalvey, *Dean*

College of Business & Public Policy

Rashmi Prasad, *Dean*

College of Education

Paul Deputy, *Interim Dean*

College of Engineering

Fred Barlow, *Dean*

College of Health

William Hogan, *Dean*

Community & Technical College

Denise Runge, *Dean (effective July 2016)*

Bonnie Nygard, *Interim Dean (July 2014 - June 2016)*

Consortium Library

Steve Rollins, *Dean*

University Honors College

John Mouracade, *Interim Dean*

Alaska Natives & Diversity

Jeane Breinig, *Interim Associate Vice Chancellor*

Alaska Native Science & Engineering Program (ANSEP)

Herbert Schroeder, *Vice Provost*

Curriculum & Assessment

Susan Kalina, *Vice Provost, Academic Affairs*

Health Programs

Jan Harris, *Vice Provost*

Research & Graduate Studies

Helena Wisniewski, *Vice Provost*

COMMUNITY CAMPUSES

Kenai Peninsula College

Gary Turner, *Director*

Kodiak College

Alan Fugleberg, *Director*

Matanuska-Susitna College

Talis Colberg, *Director*

Prince William Sound College

J. Dan O'Connor, *Director*

UNIVERSITY GOVERNANCE

Faculty Senate

David Fitzgerald, *President, 2016 - 2017*

Tara Smith, *President, 2015 - 2016*

UAA Assembly

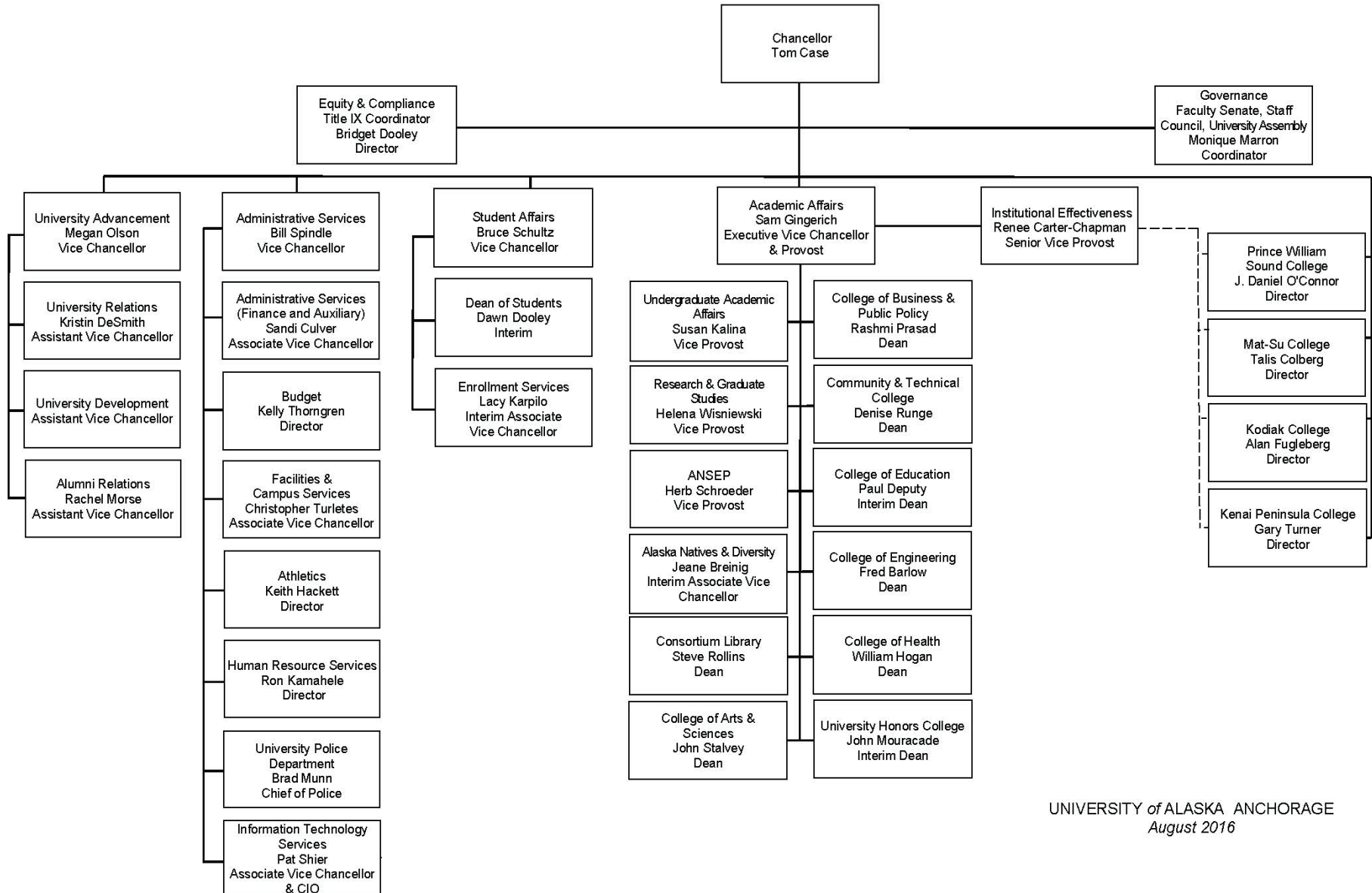
Elizabeth Winfree, *President, 2014 - 2016*

Staff Council

Elizabeth Winfree, *Co-President, 2016 - 2018*

Chris Triplett, *Co-President, 2016 - 2017*

ORGANIZATIONAL STRUCTURE



UNIVERSITY of ALASKA ANCHORAGE
August 2016

FAST FACTS

UAA TOTAL

STUDENTS

AY 15-16 Student Credit Hours	345,008
Headcount	26,210
Full-time Equivalent	11,647
Awards Granted	2,553
Fall 2015 Headcount	18,116
Full-time	7,569
Part-time	10,547

FACULTY AND STAFF—FALL 2015

Regular Faculty	648
Adjunct Faculty	626
Staff	1,098

FACILITIES

Square Feet	3,284,205
-------------	-----------

FINANCE—FY 2016 (IN \$000)

Univ. Generated Revenue	\$176,921.8
Research Focus Expenditure	\$15,218.5
Total Budget Authority	\$318,959.0
Gross Tuition	\$71,312.3
TVEP Awards	\$2,374.7

Anchorage Campus

STUDENTS

AY 15-16 Student Credit Hours	274,869
Headcount	20,229
Full-time Equivalent	9,318
Awards Granted	2,247
Fall 2015 Headcount	14,357
Full-time	5,929
Part-time	8,428

FACULTY AND STAFF—FALL 2015

Regular Faculty	559
Adjunct Faculty	403
Staff	926

FACILITIES

Square Feet	2,836,598
-------------	-----------

FINANCE—FY 2016 (IN \$000)

Univ. Generated Revenue	\$157,808.2
Research Focus Expenditure	\$15,078.5
Total Budget Authority	\$276,800.0
Gross Tuition	\$59,285.3
TVEP Awards	\$1,679.9

Kenai Peninsula College

STUDENTS

AY 15-16 Student Credit Hours	29,777
Headcount	4,209
Full-time Equivalent	990
Awards Granted	125
Fall 2015 Headcount	2,485
Full-time	328
Part-time	2,157

FACULTY AND STAFF—FALL 2015

Regular Faculty	39
Adjunct Faculty	88
Staff	69

FACILITIES

Square Feet	183,214
-------------	---------

FINANCE—FY 2016 (IN \$000)

Univ. Generated Revenue	\$8,434.6
Research Focus Expenditure	\$140.0
Total Budget Authority	\$16,898.0
Gross Tuition	\$5,389.6
TVEP Awards	\$142.5

Kodiak College

STUDENTS

AY 15-16 Student Credit Hours	7,723
Headcount	1,501
Full-time Equivalent	255
Awards Granted	23
Fall 2015 Headcount	804
Full-time	53
Part-time	751

FACULTY AND STAFF—FALL 2015

Regular Faculty	13
Adjunct Faculty	24
Staff	28

FACILITIES

Square Feet	44,981
-------------	--------

FINANCE—FY 2016 (IN \$000)

Univ. Generated Revenue	\$2,379.2
Research Focus Expenditure	\$0
Total Budget Authority	\$6,134.0
Gross Tuition	\$1,190.9
TVEP Awards	\$218.1

Matanuska-Susitna College

STUDENTS

AY 15-16 Student Credit Hours	26,076
Headcount	2,898
Full-time Equivalent	866
Awards Granted	130
Fall 2015 Headcount	1,899
Full-time	396
Part-time	1,503

FACULTY AND STAFF—FALL 2015

Regular Faculty	30
Adjunct Faculty	80
Staff	43

FACILITIES

Square Feet	152,145
-------------	---------

FINANCE—FY 2016 (IN \$000)

Univ. Generated Revenue	\$6,177.4
Research Focus Expenditure	\$0
Total Budget Authority	\$11,525.0
Gross Tuition	\$4,988.9
TVEP Awards	\$171.7

Prince William Sound College

STUDENTS

AY 15-16 Student Credit Hours	6,563
Headcount	2,241
Full-time Equivalent	218
Awards Granted	28
Fall 2015 Headcount	779
Full-time	40
Part-time	739

FACULTY AND STAFF—FALL 2015

Regular Faculty	7
Adjunct Faculty	31
Staff	32

FACILITIES

Square Feet	67,267
-------------	--------

FINANCE—FY 2016 (IN \$000)

Univ. Generated Revenue	\$2,122.4
Research Focus Expenditure	\$0
Total Budget Authority	\$7,602.0
Gross Tuition	\$457.6
TVEP Awards	\$162.5

Sources and Notes:

Students:

UA Statewide Institutional Research (IR) Decision Support Database (DSD) data at semester closing. Student Credit Hours include auditors. Awards Granted include: Undergraduate Certificate, Associate, Bachelor, Master, Doctorate, Endorsements, Licensure, Post Graduate, Post Baccalaureate, and Graduate Certificates. Headcount is for credit students only; students who enrolled in multiple campuses have been counted only once in the UAA total.

Faculty & Staff:

UA Statewide IR DSD data at Fall Freeze. Staff includes full-time & part-time employees but does not include graduate or student assistants.

Facilities:

UAA Facilities and Campus Services.

Finance:

UAA Office of Budget. Research Focus Expenditure is defined by UA Statewide as Basic Research.

TVEP stands for Technical/Vocational Education Program.

Carnegie Classification:

Masters College and University Large Programs, Public 4-year and above.

FALL 2015 ENROLLMENT SUMMARY

Course Level	UAA Total	Anchorage Campus	Kenai Peninsula	Kodiak College	Mat-Su College	PW Sound College
Student Headcount						
Total Credit Headcount	18,116.0	14,357.0	2,485.0	804.0	1,899.0	779.0
Full-time	7,569.0	5,929.0	328.0	53.0	396.0	40.0
Part-time	10,547.0	8,428.0	2,157.0	751.0	1,503.0	739.0
Full-time as a % of Total	41.8%	41.3%	13.2%	6.6%	20.9%	5.1%
All Students (Includes credit and non-credit students)	18,603	14,480	2,687	880	1,900	867
Credit Hours						
Developmental (050-099)	5,854.0	4,024.0	771.0	219.0	807.0	33.0
Lower Division (100-299)	115,146.0	86,145.0	12,046.0	3,020.0	11,389.0	2,546.0
Upper Division (300-499)	30,603.0	29,497.0	732.0	76.0	298.0	
Professional (500-599)	2,200.0	1,924.0	182.0	13.0		81.0
Graduate (600-699)	5,946.0	5,946.0				
Credit Hours Total	159,749.0	127,536.0	13,731.0	3,328.0	12,494.0	2,660.0
Audited Hours	488.0	227.0	86.0	87.0	71.0	17.0
Enrollment (Seat Count)						
Developmental (050-099)	1,896.0	1,278.0	257.0	73.0	272.0	16.0
Lower Division (100-299)	41,459.0	30,930.0	4,238.0	1,195.0	4,015.0	1,081.0
Upper Division (300-499)	10,470.0	10,102.0	246.0	29.0	93.0	
Professional (500-599)	1,577.0	1,458.0	84.0	5.0		30.0
Graduate (600-699)	2,008.0	2,008.0				
Enrollment Total	57,410.0	45,776.0	4,825.0	1,302.0	4,380.0	1,127.0
Student FTE						
Developmental (050-099)	390.3	268.3	51.4	14.6	53.8	2.2
Lower Division (100-299)	7,676.4	5,743.0	803.1	201.3	759.3	169.7
Upper Division (300-499)	2,040.2	1,966.5	48.8	5.1	19.9	
Professional (500-599)	183.3	160.3	15.2	1.1		6.8
Graduate (600-699)	495.5	495.5				
Student FTE Total	10,785.7	8,633.6	918.4	222.1	832.9	178.7
Course Sections						
Developmental (050-099)	85.0	48.0	13.0	6.0	14.0	4.0
Lower Division (100-299)	2,263.0	1,478.0	288.0	100.0	283.0	114.0
Upper Division (300-499)	681.0	639.0	27.0	5.0	10.0	
Professional (500-599)	126.0	113.0	7.0	2.0		4.0
Graduate (600-699)	287.0	287.0				
Course Sections Total	3,442.0	2,565.0	335.0	113.0	307.0	122.0
Cancelled Credit Courses	281.0	183.0	56.0	12.0	15.0	15.0

Source: UA Statewide Institutional Research (IR) Decision Support Database (DSD) data system at semester closing freeze.

Notes:

1. Headcount is unduplicated and includes auditors.
2. Total Course Sections do not include cancelled sections. Cancelled sections are those cancelled after students enrolled.
3. Student credit hours do not include Audited Hours.

PEER INSTITUTIONS

Arkansas Tech University

Boise State University

CUNY College of Staten Island

Ferris State University

Florida Gulf Coast University

Idaho State University

Indiana University-Purdue University - Fort Wayne

McNeese State University

Northern Kentucky University

Northwestern State University of Louisiana

Purdue University - Calumet Campus

The University of Texas at Brownsville

Troy University

University of Arkansas at Little Rock

University of West Florida

Weber State University

Western Kentucky University

Youngstown State University

Students

Headcount by Characteristics and Campus

UAA - Fall Closing 2015

Table 1.01

	UAA Total	% of Total	Anchorage Campus	Kenai Peninsula	Kodiak College	Mat-Su College	PW Sound College
UAA Total	18,116	100.0%	14,357	2,485	804	1,899	779
Admission Type							
New	3,643	20.1%	2,586	418	136	466	296
Continue	10,580	58.4%	8,685	913	232	762	165
Returned	3,893	21.5%	3,086	1,154	436	671	318
Class Standing							
First-time Freshman	1,982	10.9%	1,535	99	38	152	2
Freshman	2,275	12.6%	1,691	138	37	164	41
Sophomore	2,480	13.7%	1,919	129	40	153	29
Junior	2,228	12.3%	1,913	66	11	58	12
Senior	3,589	19.8%	3,258	86	10	29	5
Graduate First-time	162	0.9%	162				
Graduate Other	710	3.9%	708				
Non-Degree / Other UA Prog	4,690	25.9%	3,171	1,967	668	1,343	690
Full-time							
Graduate	245	1.4%	244				
Undergraduate	7,324	40.4%	5,685	328	53	396	40
Total	7,569	41.8%	5,929	328	53	396	40
Part-time							
Graduate	678	3.7%	669	9	1	2	4
Undergraduate	9,869	54.5%	7,759	2,148	750	1,501	735
Total	10,547	58.2%	8,428	2,157	751	1,503	739
Gender							
Female	10,607	58.6%	8,448	1,506	577	1,197	360
Male	7,509	41.4%	5,909	979	227	702	419
Race							
African American	582	3.2%	541	55	21	33	6
Alaska Native	1,028	5.7%	789	136	51	89	83
Alaska Native Multirace	712	3.9%	608	81	40	80	11
American Indian	109	0.6%	74	19	6	18	9
Asian	1,254	6.9%	1,151	79	71	46	8
Hispanic	1,192	6.6%	1,047	111	68	102	20
Hispanic Multirace	80	0.4%	71	3	4	11	1
Native Hawaiian / Pac Is	138	0.8%	127	14	3	5	1
White	10,512	58.0%	8,305	1,460	445	1,292	363
Non Hispanic Multirace	966	5.3%	837	103	57	100	15
Non Resident Alien	292	1.6%	269	19	11	1	9
Not Reported	1,251	6.9%	538	405	27	122	253

Headcount by Characteristics and Campus

UAA - Fall Closing 2015

Table 1.01

	UAA Total	% of Total	Anchorage Campus	Kenai Peninsula	Kodiak College	Mat-Su College	PW Sound College
Age							
0 - 17	732	4.0%	315	160	39	91	137
18 - 18	1,425	7.9%	1,068	181	48	191	32
19 - 19	1,476	8.1%	1,207	179	42	183	15
20 - 24	5,680	31.4%	4,862	735	256	608	105
25 - 29	3,015	16.6%	2,505	450	143	284	81
30 - 39	2,979	16.4%	2,387	426	143	286	135
40 - 49	1,444	8.0%	1,127	183	51	138	89
50 - 59	944	5.2%	660	112	38	75	123
60 & Over	419	2.3%	226	59	43	43	61
Not Reported	2	0.0%			1		1
Residency Origin							
In State	16,425	90.7%	12,906	2,286	728	1,812	694
Out of State	1,357	7.5%	1,144	178	64	85	74
International	292	1.6%	269	19	11	1	9
Not Reported	42	0.2%	38	2	1	1	2
Degree Level							
Certificate	220	1.2%	152	21	2	14	4
Associate	3,773	20.8%	2,165	497	134	542	85
Bachelor	8,531	47.1%	7,971				
Master's	729	4.0%	727				
Doctorate	31	0.2%	31				
Graduate Certificate	106	0.6%	106				
Post Baccalaureate Cert	30	0.2%	28				
Non-Degree / Other UA Prog	4,696	25.9%	3,177	1,967	668	1,343	690
Attempted Credit Hours							
0 - 2.9	1,837	10.1%	1,269	141	100	83	399
3 - 5.9	3,177	17.5%	2,609	1,359	518	799	232
6 - 8.9	3,135	17.3%	2,484	461	92	378	83
9 - 11.9	2,554	14.1%	2,225	195	41	243	25
12 - 14.9	4,820	26.6%	3,671	236	48	333	27
15 & Over	2,593	14.3%	2,099	93	5	63	13

Source: UA Statewide IR Decision Support Database (DSD) data system at semester closing.

Notes:

1. UAA Total includes Anchorage, Kenai, Kodiak, Matanuska-Susitna, and Prince William Sound College. Headcount is unduplicated. Students who enrolled in multiple campuses have been counted only once in UAA Total.
2. Included are students enrolled in credit courses at the 050 level and above, including auditors.
3. Percentages may not add to 100% due to rounding.
4. See Definition of Terms for meaning of First-time Freshman.
5. Non-Degree/Other UA Programs = Non-Degree seeking students or Other University of Alaska program degree seekers.

Headcount by Graduate/Undergraduate Level and Characteristics

UAA - Fall Closing 2015

Table 1.02

	Graduate Students			Undergraduate Students		
	UAA Total	% of Total	UAA Programs	Other UA Prog	Total	% of Total
UAA Total	18,116	100.0%	872	51	923	100.0%
Admission Type						
New	3,643	20.1%	175	10	185	20.0%
Continue	10,580	58.4%	644	20	664	71.9%
Returned	3,893	21.5%	53	21	74	8.0%
Class Standing						
First-time Freshman	1,982	10.9%				
Freshman	2,275	12.6%				
Sophomore	2,480	13.7%				
Junior	2,228	12.3%				
Senior	3,589	19.8%				
Graduate First-time	162	0.9%	162		162	17.6%
Graduate Other	710	3.9%	710		710	76.9%
Non-Degree / Other UA Prog	4,690	25.9%		51	51	5.5%
Full-time						
Graduate	245	1.4%	241	4	245	26.5%
Undergraduate	7,324	40.4%				
Total	7,569	41.8%	241	4	245	26.5%
Part-time						
Graduate	678	3.7%	631	47	678	73.5%
Undergraduate	9,869	54.5%				
Total	10,547	58.2%	631	47	678	73.5%
Gender						
Female	10,607	58.6%	577	37	614	66.5%
Male	7,509	41.4%	295	14	309	33.5%
Race						
African American	582	3.2%	25	1	26	2.8%
Alaska Native	1,028	5.7%	49	3	52	5.6%
Alaska Native Multirace	712	3.9%	20	1	21	2.3%
American Indian	109	0.6%	6		6	0.7%
Asian	1,254	6.9%	31	1	32	3.5%
Hispanic	1,192	6.6%	53	4	57	6.2%
Hispanic Multirace	80	0.4%	4		4	0.4%
Native Hawaiian / Pac Is	138	0.8%	8		8	0.9%
White	10,512	58.0%	609	33	642	69.6%
Non Hispanic Multirace	966	5.3%	28	4	32	3.5%
Non Resident Alien	292	1.6%	19		19	2.1%
Not Reported	1,251	6.9%	20	4	24	2.6%

Headcount by Graduate/Undergraduate Level and Characteristics

UAA - Fall Closing 2015

Table 1.02

	Graduate Students						Undergraduate Students	
	UAA	% of	UAA	Other UA		% of		% of
	Total	Total	Programs	Prog	Total	Total	Total	Total
Age								
0 - 17	732	4.0%					732	4.3%
18 - 18	1,425	7.9%					1,425	8.3%
19 - 19	1,476	8.1%					1,476	8.6%
20 - 24	5,680	31.4%	74	3	77	8.3%	5,603	32.6%
25 - 29	3,015	16.6%	236	11	247	26.8%	2,768	16.1%
30 - 39	2,979	16.4%	332	21	353	38.2%	2,626	15.3%
40 - 49	1,444	8.0%	133	13	146	15.8%	1,298	7.5%
50 - 59	944	5.2%	75	1	76	8.2%	868	5.0%
60 & Over	419	2.3%	22	2	24	2.6%	395	2.3%
Not Reported	2	0.0%					2	0.0%
Residency Origin								
In State	16,425	90.7%	721	35	756	81.9%	15,669	91.1%
Out of State	1,357	7.5%	128	14	142	15.4%	1,215	7.1%
International	292	1.6%	19		19	2.1%	273	1.6%
Not Reported	42	0.2%	4	2	6	0.7%	36	0.2%
Degree Level								
Certificate	220	1.2%					220	1.3%
Associate	3,773	20.8%					3,773	21.9%
Bachelor	8,531	47.1%					8,531	49.6%
Master's	729	4.0%	729		729	79.0%		
Doctorate	31	0.2%	31		31	3.4%		
Graduate Certificate	106	0.6%	106		106	11.5%		
Post Baccalaureate Cert	30	0.2%					30	0.2%
Non-Degree / Other UA Prog	4,696	25.9%	6	51	57	6.2%	4,639	27.0%
Attempted Credit Hours								
0 - 2.9	1,837	10.1%	130	19	149	16.1%	1,688	9.8%
3 - 5.9	3,177	17.5%	222	20	242	26.2%	2,935	17.1%
6 - 8.9	3,135	17.3%	279	8	287	31.1%	2,848	16.6%
9 - 11.9	2,554	14.1%	154	4	158	17.1%	2,396	13.9%
12 - 14.9	4,820	26.6%	51		51	5.5%	4,769	27.7%
15 & Over	2,593	14.3%	36		36	3.9%	2,557	14.9%

Source: UA Statewide IR DSD data system at semester closing.

Notes:

1. UAA Total includes Anchorage, Kenai, Kodiak, Matanuska-Susitna, and Prince William Sound College. Headcount is unduplicated. Students who enrolled in multiple campuses have been counted only once in UAA Total.
2. Included are students enrolled in credit courses at the 050 level and above, including auditors.
3. Percentages may not add to 100% due to rounding.
4. See Definition of Terms for meaning of First-time Freshman.
5. Non-Degree/Other UA Programs = Non-Degree seeking students or Other University of Alaska program degree seekers.

Headcount by Student Characteristics

UAA Total - Fall Semester Trends

Table 1.03

	2011	2012	2013	2014	2015	Percent Change	
						2011-15	2014-15
UAA Total	20,699	19,825	19,629	18,649	18,116	-12.5%	-2.9%
Anchorage Campus	16,205	15,718	15,640	14,754	14,357	-11.4%	-2.7%
Kenai Peninsula College	2,784	2,550	2,523	2,716	2,485	-10.7%	-8.5%
Kodiak College	755	841	796	793	804	6.5%	1.4%
Matanuska-Susitna College	2,134	1,990	1,914	1,844	1,899	-11.0%	3.0%
Prince William Sound College	957	753	834	681	779	-18.6%	14.4%
Admission Type							
New	3,900	3,482	3,449	3,553	3,643	-6.6%	2.5%
Continue	11,964	11,854	11,880	11,274	10,580	-11.6%	-6.2%
Returned	4,835	4,489	4,300	3,822	3,893	-19.5%	1.9%
Class Standing							
First-time Freshman	2,380	2,187	2,073	2,005	1,982	-16.7%	-1.1%
Freshman	2,846	2,720	2,648	2,471	2,275	-20.1%	-7.9%
Sophomore	2,858	2,912	2,782	2,779	2,480	-13.2%	-10.8%
Junior	2,234	2,290	2,345	2,206	2,228	-0.3%	1.0%
Senior	3,391	3,498	3,672	3,606	3,589	5.8%	-0.5%
Graduate First-time	188	175	152	159	162	-13.8%	1.9%
Graduate Other	859	841	896	751	710	-17.3%	-5.5%
Licensure	5	1				-100.0%	
Non-Degree / Other UA Prog	5,938	5,201	5,061	4,672	4,690	-21.0%	0.4%
Full-time							
Graduate	255	257	228	232	245	-3.9%	5.6%
Undergraduate	8,025	7,836	7,610	7,476	7,324	-8.7%	-2.0%
Total	8,280	8,093	7,838	7,708	7,569	-8.6%	-1.8%
Part-time							
Graduate	898	820	897	732	678	-24.5%	-7.4%
Undergraduate	11,521	10,912	10,894	10,209	9,869	-14.3%	-3.3%
Total	12,419	11,732	11,791	10,941	10,547	-15.1%	-3.6%
Gender							
Female	12,167	11,653	11,675	10,964	10,607	-12.8%	-3.3%
Male	8,532	8,172	7,954	7,685	7,509	-12.0%	-2.3%
Race							
African American	719	673	629	588	582	-19.1%	-1.0%
Alaska Native	1,251	1,112	1,100	1,018	1,028	-17.8%	1.0%
Alaska Native Multirace	615	677	720	703	712	15.8%	1.3%
American Indian	155	168	141	131	109	-29.7%	-16.8%
Asian	1,116	1,172	1,181	1,237	1,254	12.4%	1.4%
Hispanic	1,166	1,169	1,193	1,187	1,192	2.2%	0.4%
Hispanic Multirace	50	69	71	81	80	60.0%	-1.2%
Native Hawaiian / Pac Is	157	167	153	133	138	-12.1%	3.8%
White	12,839	11,761	11,791	11,020	10,512	-18.1%	-4.6%
Non Hispanic Multirace	745	885	900	888	966	29.7%	8.8%
Non Resident Alien	420	418	350	335	292	-30.5%	-12.8%
Not Reported	1,466	1,554	1,400	1,328	1,251	-14.7%	-5.8%

Headcount by Student Characteristics

UAA Total - Fall Semester Trends

Table 1.03

	2011	2012	2013	2014	2015	Percent Change	
						2011-15	2014-15
Age							
0 - 17	1,080	1,134	931	869	732	-32.2%	-15.8%
18 - 18	1,564	1,508	1,432	1,416	1,425	-8.9%	0.6%
19 - 19	1,643	1,629	1,570	1,541	1,476	-10.2%	-4.2%
20 - 24	6,437	6,212	6,059	5,844	5,680	-11.8%	-2.8%
25 - 29	3,322	3,209	3,189	3,042	3,015	-9.2%	-0.9%
30 - 39	3,102	2,949	3,098	2,963	2,979	-4.0%	0.5%
40 - 49	1,835	1,692	1,724	1,547	1,444	-21.3%	-6.7%
50 - 59	1,260	1,078	1,213	1,015	944	-25.1%	-7.0%
60 & Over	437	404	408	391	419	-4.1%	7.2%
Not Reported	19	10	5	21	2	-89.5%	-90.5%
Residency Origin							
In State	18,787	18,010	17,901	16,947	16,425	-12.6%	-3.1%
Out of State	1,447	1,360	1,346	1,333	1,357	-6.2%	1.8%
International	421	418	350	335	292	-30.6%	-12.8%
Not Reported	44	37	32	34	42	-4.5%	23.5%
Degree Level							
Certificate	358	304	297	275	220	-38.5%	-20.0%
Associate	4,344	4,252	4,260	4,048	3,773	-13.1%	-6.8%
Bachelor	8,990	9,038	8,939	8,725	8,531	-5.1%	-2.2%
Master's	932	886	884	771	729	-21.8%	-5.4%
Doctorate		26	24	26	31		19.2%
Graduate Certificate	115	104	140	113	106	-7.8%	-6.2%
Post Baccalaureate Cert	17	13	24	19	30	76.5%	57.9%
Teaching Licensure	5	1				-100.0%	
Non-Degree / Other UA Prog	5,938	5,201	5,061	4,672	4,696	-20.9%	0.5%
Attempted Credit Hours							
0 - 2.9	2,078	1,733	2,014	1,669	1,837	-11.6%	10.1%
3 - 5.9	3,937	3,762	3,543	3,406	3,177	-19.3%	-6.7%
6 - 8.9	3,723	3,524	3,562	3,455	3,135	-15.8%	-9.3%
9 - 11.9	2,711	2,757	2,702	2,562	2,554	-5.8%	-0.3%
12 - 14.9	5,787	5,287	5,038	4,829	4,820	-16.7%	-0.2%
15 & Over	2,463	2,762	2,770	2,728	2,593	5.3%	-4.9%

Source: UA Statewide IR DSD data system at semester closing.

Notes:

1. UAA Total includes Anchorage, Kenai, Kodiak, Matanuska-Susitna, and Prince William Sound College. Headcount is unduplicated. Students who enrolled in multiple campuses have been counted only once in UAA Total.
2. Included are students enrolled in credit courses at the 050 level and above, including auditors.
3. See Definition of Terms for meaning of First-time Freshman.
4. Other UA Programs include students admitted to UAF and UAS Programs of Study.

First-Time Freshman by Student Characteristics UAA - Fall Closing 2011 - 2015

Table 1.04

	2011	2012	2013	2014	2015	Percent Change	
						2011-15	2014-15
First-Time Freshman Total	2,380	2,187	2,073	2,005	1,982	-16.7%	-1.1%
Degree Level							
Bachelor	1,417	1,367	1,301	1,287	1,250	-11.8%	-2.9%
Associate	903	781	741	676	688	-23.8%	1.8%
Certificate	56	36	30	29	33	-41.1%	13.8%
Occupational Endorsement	4	3	1	13	11	175.0%	-15.4%
Course Load							
Full-time	1,652	1,515	1,458	1,448	1,395	-15.6%	-3.7%
Part-time	728	672	615	557	587	-19.4%	5.4%
Attempted Credit Hours							
0 - 2.9	7	3		2	2	-71.4%	0.0%
3 - 5.9	104	74	71	79	89	-14.4%	12.7%
6 - 8.9	289	260	249	213	201	-30.4%	-5.6%
9 - 11.9	306	312	277	263	295	-3.6%	12.2%
12 - 14.9	1,328	1,152	1,059	1,050	1,045	-21.3%	-0.5%
15 & Over	346	386	417	398	350	1.2%	-12.1%
Gender							
Female	1,315	1,182	1,204	1,122	1,077	-18.1%	-4.0%
Male	1,065	1,005	869	883	905	-15.0%	2.5%
Age							
0 - 17	85	89	111	90	51	-40.0%	-43.3%
18 - 18	1,194	1,203	1,104	1,092	1,139	-4.6%	4.3%
19 - 19	392	369	381	380	378	-3.6%	-0.5%
20 - 24	382	296	266	258	253	-33.8%	-1.9%
25 - 29	143	112	91	80	85	-40.6%	6.3%
30 - 39	111	69	68	63	48	-56.8%	-23.8%
40 - 49	58	28	33	25	20	-65.5%	-20.0%
50 - 59	10	18	16	15	8	-20.0%	-46.7%
60 & Over	5	3	3	2		-100.0%	-100.0%
Race							
African American	98	73	81	70	68	-30.6%	-2.9%
Alaska Native	154	139	151	143	164	6.5%	14.7%
Alaska Native Multirace	121	132	123	116	109	-9.9%	-6.0%
American Indian	15	19	7	10	8	-46.7%	-20.0%
Asian	217	183	191	185	211	-2.8%	14.1%
Hispanic	155	173	182	171	134	-13.5%	-21.6%
Hispanic Multirace	6	14	11	14	10	66.7%	-28.6%
Native Hawaiian / Pac Is	34	31	21	16	24	-29.4%	50.0%
White	1,228	1,083	1,061	1,020	981	-20.1%	-3.8%
Non Hispanic Multirace	128	145	125	141	151	18.0%	7.1%
Non Resident Alien	55	36	27	36	29	-47.3%	-19.4%
Not Reported	169	159	93	83	93	-45.0%	12.0%

First-Time Freshman by Student Characteristics

UAA - Fall Closing 2011 - 2015

Table 1.04

	2011	2012	2013	2014	2015	Percent Change	
						2011-15	2014-15
High School Percentile							
Top 10	183	196	182	206	211	15.3%	2.4%
75 - 89th	317	326	316	299	317	0.0%	6.0%
50 - 74th	533	505	507	459	461	-13.5%	0.4%
25 - 49th	467	423	365	397	374	-19.9%	-5.8%
Bottom 25	272	272	262	212	215	-21.0%	1.4%
Unknown	608	465	441	432	404	-33.6%	-6.5%
High School GPA							
4.0 +	49	37	51	34	37	-24.5%	8.8%
3.5 - 3.9	392	427	412	418	491	25.3%	17.5%
3.0 - 3.4	618	560	559	534	564	-8.7%	5.6%
2.5 - 2.9	757	694	595	616	535	-29.3%	-13.1%
2.0 - 2.4	325	325	289	258	256	-21.2%	-0.8%
1.5 - 1.9	100	80	87	82	57	-43.0%	-30.5%
1.4 & Less	9	7	9	6	4	-55.6%	-33.3%
Unknown	130	57	71	57	38	-70.8%	-33.3%
Average Test Scores							
SAT Math							
Mean	507.7	509.9	504.4	507.9	506.4	-0.3%	-0.3%
Median	510	510	510	510	510	0.0%	0.0%
SAT Verbal							
Mean	521.1	509.6	495.0	500.2	501.1	-3.8%	0.2%
Median	490	500	480	505	510	4.1%	1.0%
SAT Critical Reading							
Mean	509.0	512.4	509.6	510.2	513.5	0.9%	0.6%
Median	500	520	510	510	520	4.0%	2.0%
Enhanced Math ACT							
Mean	21.2	21.5	20.9	21.1	21.0	-0.9%	-0.5%
Median	21	22	21	21	21	0.0%	0.0%
Enhanced English ACT							
Mean	20.2	20.5	19.9	19.8	19.8	-2.0%	0.0%
Median	21	21	20	20	20	-4.8%	0.0%
Enhanced Reading ACT							
Mean	21.8	22.3	21.4	21.8	21.6	-0.9%	-0.9%
Median	22	22	21	21	21	-4.5%	0.0%
Residency Origin							
In State	2,224	2,070	1,958	1,881	1,858	-16.5%	-1.2%
Out of State	98	81	88	88	95	-3.1%	8.0%
International	55	36	27	36	29	-47.3%	-19.4%
Not Reported	3						-100.0%

First-Time Freshman by Student Characteristics

UAA - Fall Closing 2011 - 2015

Table 1.04

	2011	2012	2013	2014	2015	Percent Change	
						2011-15	2014-15
High School Region							
Alaska Anchorage High Schools							
Alaska Adult Learning Center	5	12	6	6	2	-60.0%	-66.7%
Alaska Military Youth Academy	1	2	4	5	3	200.0%	-40.0%
Anchorage Christian Academy	1		1			-100.0%	
Anchorage Christian Schools	16	19	17	13	7	-56.3%	-46.2%
Atheneum High School	2					-100.0%	
Avail School	3	2	5	3	4	33.3%	33.3%
Bartlett High School	114	109	103	94	100	-12.3%	6.4%
Benny Benson Secondary School	14	8	12	6	10	-28.6%	66.7%
Chugach Extension Corresp School	1	1		2		-100.0%	-100.0%
Chugiak High School	74	79	101	86	77	4.1%	-10.5%
Crossroads High School	7	2	5	3	1	-85.7%	-66.7%
Dimond High School	132	153	139	128	115	-12.9%	-10.2%
Eagle River Christian High School	1			1		-100.0%	-100.0%
Eagle River High School	63	58	65	46	61	-3.2%	32.6%
East Anchorage High School	177	154	145	172	145	-18.1%	-15.7%
Family Partnership Charter	16	26	14	17	14	-12.5%	-17.6%
Frontier Charter School	9	5	5	9	12	33.3%	33.3%
Grace Christian School	15	19	7	11	16	6.7%	45.5%
Heritage Christian School		1					
Heritage High School	3	1				-100.0%	
Highland Tech Charter School	8	7	9	4	7	-12.5%	75.0%
Holy Rosary Academy	1	1			1	0.0%	
Lumen Christi High School	5	6	4	2	9	80.0%	350.0%
McLaughlin Secondary	1	1	2	2	1	0.0%	-50.0%
McLaughlin Youth Center	2		3	1	2	0.0%	100.0%
Polaris K-12 School	12	9	13	9	11	-8.3%	22.2%
SAVE High School	26	14	20	19	8	-69.2%	-57.9%
Save I Program	1			1	1	0.0%	0.0%
Service High School	139	130	138	139	123	-11.5%	-11.5%
South Anchorage High School	126	121	95	98	95	-24.6%	-3.1%
Steller Secondary Alternative	22	9	14	5	17	-22.7%	240.0%
True Vine Christian School		1		1			-100.0%
Univ of AK Anchorage - High School	3		4	3		-100.0%	-100.0%
West Anchorage High School	105	122	88	109	98	-6.7%	-10.1%
Whaley High School	2					-100.0%	
World Harvest Christian School	1	1	1			-100.0%	

First-Time Freshman by Student Characteristics

UAA - Fall Closing 2011 - 2015

Table 1.04

	2011	2012	2013	2014	2015	Percent Change	
						2011-15	2014-15
High School Region (continued)							
AK Gulf Coast High Schools	209	195	160	179	177	-15.3%	-1.1%
AK Interior High Schools	72	76	81	60	83	15.3%	38.3%
AK Mat-Su High Schools	256	282	243	261	255	-0.4%	-2.3%
AK Northern High Schools	25	28	23	49	49	96.0%	0.0%
AK Other High Schools	198	158	163	125	110	-44.4%	-12.0%
AK Southeast High Schools	74	67	50	43	63	-14.9%	46.5%
AK Southwest High Schools	50	56	68	52	67	34.0%	28.8%
American Military High School	4	2	2	5	5	25.0%	0.0%
American Possessions	3	2	2	1	2	-33.3%	100.0%
East North Central States	21	12	14	17	19	-9.5%	11.8%
East South Central States	7	5	4	7	12	71.4%	71.4%
GED (Outside Alaska)	48	29	34	19	18	-62.5%	-5.3%
Home School	17	7	10	11	8	-52.9%	-27.3%
International High Schools	60	32	24	25	16	-73.3%	-36.0%
Mid-Atlantic States	6	15	16	7	11	83.3%	57.1%
Mountain States	42	24	29	30	28	-33.3%	-6.7%
New England States	7	8	6	5	8	14.3%	60.0%
No High School	7	2		1		-100.0%	-100.0%
Pacific States	71	55	57	57	51	-28.2%	-10.5%
South Atlantic States	31	22	25	22	27	-12.9%	22.7%
Unknown High School	29	12	8	12	5	-82.8%	-58.3%
West North Central States	15	11	18	9	9	-40.0%	0.0%
West South Central States	20	14	16	13	19	-5.0%	46.2%

Source: UA Statewide IR DSD data system at semester closing.

Note:
First-time Freshman is a degree-seeking student who enrolls in an institution with no prior postsecondary experience. Includes students enrolled in academic or occupational programs. Also includes students enrolled in the fall term who attended college for the first time in the prior summer term, or students who entered with advanced standing (college credits earned before graduation from high school).

Headcount Trends by Major, Degree Type, and Campus/College Fall Closing 2011 - 2015

Table 1.05

	2011	2012	2013	2014	2015
Anchorage Campus					
College of Arts & Sciences					
Anthropology					
Bachelor of Arts	72	55	61	63	79
Bachelor of Science	24	25	28	22	19
Master of Arts	34	33	27	28	30
Total	130	113	116	113	128
Applied Ethics					
One Year Certificate				2	2
Art					
Bachelor of Arts	133	147	134	137	136
Bachelor of Fine Arts	13	15	13	10	7
Total	146	162	147	147	143
Biological Sciences					
Bachelor of Arts	89	93	88	74	69
Bachelor of Science	395	410	387	434	398
Master of Science	31	29	27	22	28
Total	515	532	502	530	495
Chemistry					
Bachelor of Science	72	80	93	84	38
Children's Mental Health					
Graduate Certificate		2	4	1	1
Clinical Psychology					
Master of Science	27	25	25	26	19
Clinical Community Psychology					
Ph.D.		26	24	26	31
Creative Writing & Literary Arts					
Master of Fine Arts	38	37	44	48	45
Dual Language					
Bachelor of Arts	14	10	16	17	19
English					
Bachelor of Arts	221	211	189	180	178
Master of Arts	14	18	23	14	12
Total	235	229	212	194	190
Environment & Society					
Bachelor of Arts	27	38	32	31	20
Bachelor of Science	22	33	35	39	57
Total	49	71	67	70	77
General Program					
Associate of Arts	575	575	574	481	455
Geological Science					
Bachelor of Science	91	99	93	111	85
History					
Bachelor of Arts	167	166	171	154	138

Headcount Trends by Major, Degree Type, and Campus/College Fall Closing 2011 - 2015

Table 1.05

	2011	2012	2013	2014	2015
Interdisciplinary Studies					
Bachelor of Arts	4			1	1
Bachelor of Science	1		1	1	1
Master of Science	3	2	1	4	10
Total	8	2	2	6	12
International Studies					
Bachelor of Arts	92	88	75	79	69
Journalism & Public Communication					
Bachelor of Arts	160	144	143	116	119
Non-Degree Seeking			1		
Total	160	144	144	116	119
Languages					
Bachelor of Arts	125	100	93	93	99
Liberal Studies					
Bachelor of Liberal Studies	41	29	18	18	7
Mathematics					
Bachelor of Arts	23	25	27	22	16
Bachelor of Science	63	61	64	73	68
Total	86	86	91	95	84
Music					
Bachelor of Arts	6	5	7	4	24
Music Education					
Bachelor of Music	32	30	29	30	44
Music Performance					
Bachelor of Music	16	16	12	9	21
Natural Sciences					
Bachelor of Science	148	176	192	190	215
Philosophy					
Bachelor of Arts	36	39	38	31	31
Political Science					
Bachelor of Arts	106	115	99	74	65
Pre-Major Fine Arts					
Bachelor of Fine Arts	61	53	49	51	57
Pre-Major Languages					
Bachelor of Arts			2	1	
Pre-Major Music					
Bachelor of Arts	17	21	17	15	
Pre-Major Music Education					
Bachelor of Music	22	21	19	18	1
Pre-Major Music Performance					
Bachelor of Music	13	17	17	17	1
Psychology					
Bachelor of Arts	381	380	363	343	338
Bachelor of Science	120	115	117	89	105
Total	501	495	480	432	443

Headcount Trends by Major, Degree Type, and Campus/College Fall Closing 2011 - 2015

Table 1.05

	2011	2012	2013	2014	2015
Anchorage Campus - College of Arts & Sciences (continued)					
Sociology					
Bachelor of Arts	64	62	56	58	43
Bachelor of Science	7	2	6	6	8
Total	71	64	62	64	51
Theatre					
Bachelor of Arts	66	63	58	55	49
College of Arts & Sciences Total	3,666	3,691	3,592	3,402	3,258
College of Business & Public Policy					
Accounting					
Associate of Applied Science	95	109	103	87	85
Bachelor of Arts		1			
Bachelor of Business Administration	376	414	403	375	362
Total	471	524	506	462	447
Business Administration					
Master of Business Administration	8	7	2		
Business Computer Information Systems					
Associate of Applied Science	18	16	16	17	17
Economics					
Bachelor of Arts	46	47	51	47	43
Bachelor of Business Administration	36	38	37	34	41
Total	82	85	88	81	84
Finance					
Bachelor of Business Administration	112	120	130	129	131
General Management					
Master of Business Administration	124	125	111	100	77
Global Logistics Supply Chain Management					
Bachelor of Business Administration	40	53	53	63	74
Global Logistics Management					
Bachelor of Business Administration	8	3			
Global Supply Chain Management					
Master of Science			17	14	21
Logistics					
One Year Certificate	1				
Occupational Endorsement Certificate		1			
Total	1	1			
Logistics & Supply Chain Operations					
Associate of Applied Science	19	18	24	30	24
One Year Certificate	3	3	5	1	6
Occupational Endorsement Certificate	1		13		
Total	23	21	42	31	30
Logistics Operations					
Associate of Applied Science	1				
Management					
Bachelor of Business Administration	417	431	359	425	430

Headcount Trends by Major, Degree Type, and Campus/College Fall Closing 2011 - 2015

Table 1.05

	2011	2012	2013	2014	2015
Management Information Systems					
Bachelor of Business Administration	70	72	55	56	57
Marketing					
Bachelor of Arts			1	1	
Bachelor of Business Administration	132	136	124	94	100
Total	132	136	125	95	100
Pre-Global Logistics Supply Chain Management					
Bachelor of Business Administration				1	
Pre-Major Accounting					
Bachelor of Business Administration	9	2	3	6	6
Pre-Major Finance					
Bachelor of Business Administration	5	3	3	1	2
Pre-Major Management					
Bachelor of Business Administration	12	7	10	8	9
Pre-Major Management Information System					
Bachelor of Business Administration	2		1	1	
Pre-Major Marketing					
Bachelor of Business Administration	2	3	4	2	1
Pre-major Economics					
Bachelor of Arts	1	1			
Bachelor of Business Administration	2				
Total	3	1			
Public Administration					
Master of Public Administration	45	41	33	35	36
Small Business Administration					
Associate of Applied Science	81	79	83	101	85
College of Business & Public Policy Total	1,666	1,730	1,641	1,628	1,607
College of Education					
Counselor Education					
Graduate Certificate		1	1		3
Master of Education	36	39	46	38	37
Total	36	40	47	38	40
Early Childhood					
Post-Bachelor Certificate	4	9	13	8	5
Early Childhood Development					
Associate of Applied Science	56	58	57	50	40
One Year Certificate	10	7	5	5	3
Total	66	65	62	55	43
Early Childhood Education					
Associate of Applied Science	1	1			
Bachelor of Arts	174	202	238	211	193
Total	175	203	238	211	193
Early Childhood Special Education					
Master of Education	19	12	14	17	8

Headcount Trends by Major, Degree Type, and Campus/College Fall Closing 2011 - 2015

Table 1.05

	2011	2012	2013	2014	2015
Anchorage Campus - College of Education (continued)					
Education					
Master of Arts in Teaching	50	45	46	27	20
Educational Leadership					
Master of Education	121	99	76	46	37
Elementary Education					
Bachelor of Arts	323	257	248	241	234
Elementary Education (K-6)					
Post-Bachelor Certificate	13	4	4	6	10
Language Education					
Graduate Certificate		1	21	25	29
Master Teacher					
Master of Education	3	3	5	2	
Pre-Major Early Childhood					
Bachelor of Arts			1		
Pre-Major Elementary Education					
Bachelor of Education	1				
Pre-Major Elementary Education					
Bachelor of Arts	2	1	1	1	
Principal					
Graduate Certificate	32	25	40	42	29
Licensure Program	1	1			
Non-Degree Seeking			1	1	
Total	33	26	41	43	29
Principal (7-12)					
Licensure Program	1				
Principal (K-8, 7-12)					
Licensure Program	1				
Reading Specialist					
Educational Endorsement	1	1	2		2
Special Education					
Graduate Certificate	54	44	36	17	21
Master of Education	17	15	17	11	12
Non-Degree Seeking			1		
Total	71	59	54	28	33
Speech Language Pathology					
Post-Bachelor Certificate					12
Superintendent					
Educational Endorsement	1				1
Graduate Certificate	7	11	10	12	3
Post-Graduate Certificate			1		
Total	8	11	11	12	4
Teaching Credential - Special Education					
Licensure Program	1				
Non-Degree Seeking	1		1		
Total	2		1		

Headcount Trends by Major, Degree Type, and Campus/College Fall Closing 2011 - 2015

Table 1.05

	2011	2012	2013	2014	2015
Teaching Credential - Educational Leader					
Licensure Program	1				
Teaching and Learning					
Master of Education	1	12	16	24	28
e-Learning					
Graduate Certificate	1		1		
College of Education Total	933	848	902	784	727
College of Engineering					
Applied Environmental Science & Technology					
Masters - Other	6	6	6	3	5
Master of Science	9	11	13	10	6
Total	15	17	19	13	11
Arctic Engineering					
Master of Science	20	13	9	5	7
Civil Engineering					
Bachelor of Science	162	140	130	113	94
Masters of Civil Engineering	17	9	8	9	8
Master of Science	16	22	22	18	19
Total	195	171	160	140	121
Computer Science					
Bachelor of Arts	39	54	46	50	55
Bachelor of Science	129	169	154	176	174
Total	168	223	200	226	229
Computer Systems Engineering					
Bachelor of Science					12
Electrical Engineering					
Bachelor of Science					15
Engineering					
Bachelor of Science	345	257	239	228	161
Engineering Management					
Master of Science	15	12	16	12	12
Environmental Quality Engineering					
Master of Science	1				
Environmental Quality Science					
Master of Science	1				
Environmental Regulation & Permitting					
Graduate Certificate	5	6	6	2	5
Geographic Information Systems					
One Year Certificate	4	7	4	4	5
Geomatics					
Associate of Applied Science	18	10	7	3	9
Bachelor of Science	44	47	54	73	69
Total	62	57	61	76	78

Headcount Trends by Major, Degree Type, and Campus/College Fall Closing 2011 - 2015

Table 1.05

	2011	2012	2013	2014	2015
Anchorage Campus - College of Engineering (continued)					
Mechanical Engineering					
Bachelor of Science					50
Master of Science				5	4
Total				5	54
Port & Coastal Engineering					
Graduate Certificate	1		1		
Pre-Major Civil Engineering					
Bachelor of Science	124	135	104	106	127
Pre-Major Computer Systems Engineering					
Bachelor of Science					14
Pre-Major Electrical Engineering					
Bachelor of Science					31
Pre-Major Mechanical Engineering					
Bachelor of Science					62
Pre-Major Engineering					
Bachelor of Science	197	261	317	364	273
Project Management					
Master of Science	66	69	51	65	73
Science Management					
Master of Science	1	2	2	1	
College of Engineering Total	1,220	1,230	1,189	1,247	1,290
College of Health					
Advanced Human Service Systems					
Graduate Certificate	4	4	7	4	
Children's Behavioral Health					
Occupational Endorsement Certificate	15	13	9	7	8
Children's Residential Service					
Occupational Endorsement Certificate	1				1
Civic Engagement					
One Year Certificate	1				
Clinical Assistant					
Occupational Endorsement Certificate		2	1	2	
Conflict Resolution					
Occupational Endorsement Certificate	3	1		2	
Dental Assisting					
Associate of Applied Science	4	6	9	9	7
Two Year Certificate	10	8	3	10	6
Total	14	14	12	19	13
Dental Hygiene					
Associate of Applied Science	23	23	23	25	21
Bachelor of Science	4	17	13	8	10
Total	27	40	36	33	31

Headcount Trends by Major, Degree Type, and Campus/College Fall Closing 2011 - 2015

Table 1.05

	2011	2012	2013	2014	2015
Diagnostic Medical Sonography					
Associate of Applied Science		6	10	8	7
Dietetic Internship					
Graduate Certificate	5	5	5	8	6
Dietetics					
Bachelor of Science	3	10	12	13	17
Family Nurse Practitioner					
Graduate Certificate			1		1
Fire & Emergency Services Technology					
Associate of Applied Science	65	51	46	41	66
Fire Service Administration					
Associate of Applied Science		1			
Health Sciences					
Bachelor of Science	2	6	3	5	23
Human Services					
Associate of Applied Science	132	144	132	130	117
Bachelor of Human Services	55	43	47	46	54
Bachelor of Science		1	1	1	
Total	187	188	180	177	171
Justice					
Bachelor of Arts	254	274	234	147	96
Legal Nurse Consultant Paralegal					
One Year Certificate			1		
Legal Studies					
Bachelor of Arts			10	11	14
Limited Radiography					
Occupational Endorsement Certificate	9	6	2	1	4
Medical Assisting					
Associate of Applied Science	16	18	22	21	23
Medical Laboratory Science					
Bachelor of Science		27	49	82	104
Medical Laboratory Technology					
Associate of Applied Science	5	7	9	5	4
Medical Office Coding					
Occupational Endorsement Certificate	12	11	17	34	22
Medical Office Supply					
Occupational Endorsement Certificate		2	1	1	2
Medical Technology					
Bachelor of Science	90	70	44	22	7
Nursing					
Associate of Applied Science	161	193	207	193	185
Nursing Education					
Graduate Certificate			1		
Nursing Practice					
Doctor of Nursing Practice					6

Headcount Trends by Major, Degree Type, and Campus/College Fall Closing 2011 - 2015

Table 1.05

	2011	2012	2013	2014	2015
Anchorage Campus - College of Health (continued)					
Nursing Science					
Bachelor of Science	187	192	203	202	186
Master of Science	43	45	59	54	43
Total	230	237	262	256	229
Nutrition					
Bachelor of Science	54	31	31	16	10
Paralegal Studies					
Associate of Applied Science			7	7	5
Two Year Certificate	4	6	6	1	
Post-Bachelor Certificate			6	2	1
Total	4	6	19	10	6
Pharmacy Technology					
Occupational Endorsement Certificate	20	19	17	14	15
Phlebotomist					
Occupational Endorsement Certificate	3	8	7	5	3
Physical Therapist Assistant					
Associate of Applied Science				7	14
Pre-Major Dental Assisting					
Associate of Applied Science	7	7	9	7	10
Two Year Certificate		4	3	1	2
Total	7	11	12	8	12
Pre-Major Dental Hygiene					
Associate of Applied Science	102	88	76	70	58
Bachelor of Science	27	37	46	59	50
Total	129	125	122	129	108
Pre-Major Diagnostic Medical Sonography					
Associate of Applied Science		3	7	12	15
Pre-Major Dietetics					
Bachelor of Science	49	69	71	69	63
Pre-Major Health Science					
Bachelor of Science	26	30	60	159	219
Pre-Major Human Services					
Bachelor of Human Services	10	12	17	4	
Pre-Major Justice					
Bachelor of Arts			20	83	122
Pre-Major Legal Studies					
Bachelor of Arts			9	31	42
Pre-Major Medical Assisting					
Associate of Applied Science	57	69	56	72	61
Pre-Major Medical Laboratory Technology					
Associate of Applied Science	24	30	26	17	23
Pre-Major Nursing					
Associate of Applied Science	335	324	334	352	335
Pre-Major Nursing Science					
Bachelor of Science	815	798	825	790	756

Headcount Trends by Major, Degree Type, and Campus/College Fall Closing 2011 - 2015

Table 1.05

	2011	2012	2013	2014	2015
Pre-Major Paralegal Studies					
Associate of Applied Science			15	16	13
Two Year Certificate	29	25	10	5	1
Post-Bachelor Certificate			1	3	2
Total	29	25	26	24	16
Pre-Major Physical Therapist Assisting					
Associate of Applied Science				6	39
Pre-Major Social Work					
Bachelor of Social Work	68	96	100	108	111
Pre-Major Legal Nurse Consulting Paralegal					
One Year Certificate					1
Pre-Major Radiologic Technology					
Associate of Applied Science	111	103	102	86	111
Psychiatric & Mental Health Nurse Practitioner					
Graduate Certificate	4	2	1	1	3
Public Health Practice					
Master of Public Health	73	69	88	75	75
Radiologic Technology					
Associate of Applied Science	26	32	36	23	11
Social Work					
Bachelor of Social Work	40	25	24	27	35
Master of Social Work	75	68	64	51	54
Total	115	93	88	78	89
Social Work Management					
Graduate Certificate		1		1	2
College of Health Total	3,063	3,142	3,255	3,272	3,302
Community & Technical College					
Advanced Welding					
Occupational Endorsement Certificate					1
Air Traffic Control					
Associate of Applied Science	80	70	60	32	24
Apprenticeship Technology					
Associate of Applied Science	6	8	11	5	1
Architectural & Engineering Technology					
Associate of Applied Science	58	46	53	47	38
Architectural Drafting					
One Year Certificate	8	3	4	5	2
Automotive Technology					
Associate of Applied Science	41	46	40	34	25
Two Year Certificate	14	14	8	10	10
Total	55	60	48	44	35
Automotive - Electrical					
Occupational Endorsement Certificate			1	1	1

Headcount Trends by Major, Degree Type, and Campus/College Fall Closing 2011 - 2015

Table 1.05

	2011	2012	2013	2014	2015
Anchorage Campus - Community & Technical College (continued)					
Automotive - Engine Performance					
Occupational Endorsement Certificate	1				
Aviation Administration					
Associate of Applied Science	11	7	35	46	42
Aviation Maintenance - Airframe					
Two Year Certificate	8	11	27	31	30
Aviation Maintenance - Powerplant					
Two Year Certificate		15	17	6	6
Aviation Maintenance Technology					
Associate of Applied Science	33	24	23	34	34
Two Year Certificate	8	4			
Total	41	28	23	34	34
Aviation Technology					
Bachelor of Science	241	241	218	208	188
Bookkeeping Support					
Occupational Endorsement Certificate	2	1	1		
Brakes, Suspension, Alignment					
Occupational Endorsement Certificate	2			1	2
CAD for Building Construction					
Occupational Endorsement Certificate	2	1	1	2	3
Career & Technical Education					
Graduate Certificate		1	2		
Master of Science	18	17	15	6	3
Total	18	18	17	6	3
Cisco Certificate Network Associate					
Occupational Endorsement Certificate	5	1	2	4	
Civil Drafting					
One Year Certificate	1	3	3	1	2
Civil Technology					
One Year Certificate					1
Computer & Networking Technology					
Associate of Applied Science		67	89	102	105
Two Year Certificate	39	17	19	11	8
Total	39	84	108	113	113
Computer Information Office Systems					
Associate of Applied Science	55	37	30	14	7
Construction Management					
Associate of Applied Science	40	28	34	28	26
Bachelor of Science	112	128	128	119	121
Total	152	156	162	147	147
Corporate Specified Skills					
Occupational Endorsement Certificate			1	1	
Culinary Arts					
Associate of Applied Science	120	114	95	80	74

Headcount Trends by Major, Degree Type, and Campus/College Fall Closing 2011 - 2015

Table 1.05

	2011	2012	2013	2014	2015
Fitness Leadership					
Occupational Endorsement Certificate	9	7	4	1	
Heavy Duty Transportation & Equipment					
Associate of Applied Science	20	21	25	22	20
Two Year Certificate	9	6	9	5	12
Total	29	27	34	27	32
Hospitality Restaurant Management					
Bachelor of Arts	74	70	83	83	82
Legal Office Support					
Occupational Endorsement Certificate		1			
Mechanical & Electric Drafting					
One Year Certificate	1	1	3	4	1
Non-Destructive Testing					
One Year Certificate	2		1		
Non-Destructive Testing Technology					
Occupational Endorsement Certificate				6	3
Occupational Safety & Health					
Associate of Applied Science					85
Office Digital Media					
Occupational Endorsement Certificate		2			
Office Foundations					
Occupational Endorsement Certificate	3	2	6	7	1
Office Support					
Occupational Endorsement Certificate	2	1	1		1
Outdoor Leadership					
Occupational Endorsement Certificate		1			
Physical Education					
Bachelor of Science	158	130	103	100	120
Pre-Major Technology					
Bachelor of Science	46	41	45	45	42
Professional Piloting					
Associate of Applied Science	16	30	38	38	46
Retail Management					
One Year Certificate			7	7	8
Structural Drafting					
One Year Certificate	1				1
Technical Support					
Occupational Endorsement Certificate	2	1		1	
Technology					
Bachelor of Science	34	32	35	48	45
Telecomm Electronics & Computer Technology					
Associate of Applied Science	69	22	5	3	
Vocational Education					
Master of Science		1	1	1	

Headcount Trends by Major, Degree Type, and Campus/College Fall Closing 2011 - 2015

Table 1.05

	2011	2012	2013	2014	2015
Anchorage Campus - Community & Technical College (continued)					
Welding & Non-Destructive Testing Technology					
Associate of Applied Science	69	72	65	58	55
Welding					
Occupational Endorsement Certificate			1	4	2
Community & Technical College Total	1,420	1,345	1,349	1,261	1,278
Anchorage Campus Non-Degree					
Exploratory Major/Undeclared					
Bachelor of Arts	887	860	900	683	569
Non-Degree Seeking					
Non-Degree Seeking	3,500	3,093	3,040	2,827	2,572
Pending Degree Seeking					1
Total	3,500	3,093	3,041	2,827	2,573
Pending Degree Seeking					
Graduate		7	10	19	18
Undergraduate	193	179	133	82	121
Total	193	186	143	101	139
Other					
Exchange Student	16	9	9	1	13
Inactivated Program	14	11	6	3	25
Total	30	20	15	4	38
Pre-Graduate					
Non-Degree Seeking				2	
Anchorage Campus Non-Degree Total	4,610	4,159	4,099	3,617	3,319
Anchorage Campus Total	16,578	16,145	16,027	15,211	14,781
Kenai Peninsula College					
Computer Electronics					
Associate of Applied Science	11	10	9	4	3
Computer Information Office Systems					
Associate of Applied Science	15	12	9	6	2
Corrections					
One Year Certificate	5	3	3	1	5
Occupational Endorsement Certificate	2		1	2	1
Total	7	3	4	3	6
Digital Art					
Associate of Applied Science	16	14	12	11	8
General Business					
Associate of Applied Science	45	40	50	51	44
General Program					
Associate of Arts	288	269	227	231	153

Headcount Trends by Major, Degree Type, and Campus/College Fall Closing 2011 - 2015

Table 1.05

	2011	2012	2013	2014	2015
Industrial Process Instrumentation					
Associate of Applied Science	45	38	52	49	55
Mechanical Technology					
Two Year Certificate	6	1			
Non-Degree Seeking					
Non-Degree Seeking	528	428	331	456	456
Pending Degree Seeking		1			
Total	528	429	331	456	456
Occupational Safety & Health					
Associate of Applied Science	76	86	98	94	1
Office Management & Technology					
Associate of Applied Science				1	
Paramedical Technology					
Associate of Applied Science	14	16	17	15	13
Pending Degree Seeking					
Non-Degree Seeking	1				
Pending Degree Seeking	8	11	10	13	7
Total	9	11	10	13	7
Petroleum Technology					
One Year Certificate			4	4	3
Two Year Certificate	7	7	3	1	1
Total	7	7	7	5	4
Pre-Major Paramedical Technology					
Associate of Applied Science	14	15	14	13	15
Pre-Major Process Technology					
Associate of Applied Science					69
Process Technology					
Associate of Applied Science	183	197	214	247	158
Small Business Administration					
Associate of Applied Science		1	1		1
Small Business Management					
One Year Certificate	7	3	1		
Welding Technology					
One Year Certificate			12	24	12
Two Year Certificate	15	10	4	2	1
Total	15	10	16	26	13
Kenai Peninsula College Total	1,286	1,162	1,072	1,226	1,008
Kodiak College					
Accounting					
Associate of Applied Science	27	17	12	18	20
Bookkeeping Support					
Occupational Endorsement Certificate			1		
Computer Information Office Systems					
Associate of Applied Science	7	6	5	5	5

Headcount Trends by Major, Degree Type, and Campus/College Fall Closing 2011 - 2015

Table 1.05

	2011	2012	2013	2014	2015
Kodiak College (continued)					
Computer Systems Technology					
Associate of Applied Science	3	5	2		
Construction Technology					
One Year Certificate		1	1		
General Business					
Associate of Applied Science	19	9	6	6	12
General Program					
Associate of Arts	87	90	110	110	102
Industrial Safety Program Support					
One Year Certificate	1	2	1		
Medical Office Support					
Occupational Endorsement Certificate			1		
Non-Degree Seeking					
Non-Degree Seeking	209	170	135	138	146
Office Digital Media					
Occupational Endorsement Certificate	1	1	1		
Office Support					
Occupational Endorsement Certificate					1
Pending Degree Seeking					
Pending Degree Seeking	14	14	8	16	11
Technology					
Associate of Applied Science	13	16	16	9	8
Welding					
One Year Certificate	8	4	2	3	2
Kodiak College Total	389	335	301	305	307
Matanuska-Susitna College					
Accounting					
Associate of Applied Science	49	39	36	47	38
Architectural & Engineering Technology					
Associate of Applied Science	29	18	9		
Architectural Drafting					
One Year Certificate	5	1	1		
Bookkeeping Support					
Occupational Endorsement Certificate			1	1	
Cisco Certification Network Associate					
Occupational Endorsement Certificate	1	5			
Commercial HVAC Systems					
Occupational Endorsement Certificate	2	1	2	1	1
Commercial Refrigeration					
Occupational Endorsement Certificate		1			1
Computer Information Office Systems					
Associate of Applied Science	35	30	18	16	13

Headcount Trends by Major, Degree Type, and Campus/College Fall Closing 2011 - 2015

Table 1.05

	2011	2012	2013	2014	2015
Computer Systems Technology					
Associate of Applied Science	32	22	22	17	11
General Business					
Associate of Applied Science	26	40	49	45	35
General Program					
Associate of Arts	455	392	403	386	372
Human Services					
Associate of Applied Science	85	83	69	54	57
Mechanical & Electric Drafting					
One Year Certificate	1				
Medical Office Supply					
Occupational Endorsement Certificate	2	1	1		
Non-Degree Seeking					
Non-Degree Seeking	427	358	360	254	238
Office Foundations					
Occupational Endorsement Certificate	2				1
Office Support					
Occupational Endorsement Certificate	1	2			
Paramedical Technology					
Associate of Applied Science	11	14	18	17	12
Pending Degree Seeking					
Pending Degree Seeking	6	9	7	3	5
Pre-Major Paramedical Technology					
Associate of Applied Science	18	21	20	32	24
Refrigeration & Heating Technology					
Associate of Applied Science	19	19	17	12	13
Two Year Certificate	4	3	3	2	3
Total	23	22	20	14	16
Residential Air Conditioning & Refrigeration					
Occupational Endorsement Certificate	1	1	2	1	
Residential Heating/Ventilation					
Occupational Endorsement Certificate	1	2			
Small Business Administration					
Associate of Applied Science	39	19	16	23	16
Sustainable Energy					
Occupational Endorsement Certificate			1	5	4
Telecomm Electronics & Computer Technology					
Associate of Applied Science	1				
Veterinary Assisting					
Occupational Endorsement Certificate	37	21	19	11	4
Matanuska-Susitna College Total	1,289	1,102	1,074	927	848

Headcount Trends by Major, Degree Type, and Campus/College Fall Closing 2011 - 2015

Table 1.05

	2011	2012	2013	2014	2015
Prince William Sound College					
Computer Information Office Systems					
Associate of Applied Science	10	11	7	5	3
Occupational Endorsement Certificate				1	
Total	10	11	7	6	3
Direct Services Specialist					
Occupational Endorsement Certificate	2	13	7	8	3
Disability Services					
Associate of Applied Science	23	43	31	19	19
Two Year Certificate	1	3	4	3	
Total	24	46	35	22	19
General Program					
Associate of Arts	87	75	75	61	48
Industrial Technology					
Associate of Applied Science	11	16	18	17	12
Two Year Certificate	1	3	1	1	1
Total	12	19	19	18	13
Non-Degree Seeking					
Non-Degree Seeking	505	387	461	377	531
Outdoor Leadership					
Associate of Applied Science		4	5	8	9
Playwriting					
Associate of Fine Arts	1	2			
Prince William Sound College Total	641	557	609	500	626
Other UA Programs					
UAF Programs	311	283	284	273	312
UAS Programs	205	241	262	207	234
UAA Total	20,699	19,825	19,629	18,649	18,116

Source: UA Statewide IR DSD data system at semester closing.

Notes:

1. Student distribution in this report is based on primary/home campus where students are officially admitted.
2. Headcount is unduplicated.
3. Students who enrolled in multiple campuses have been counted only once in UAA Total.

Closing Headcount Trend by Campus and Term

Table 1.06

	Anchorage Campus			Kenai Peninsula College			Kodiak College		
	Summer	Fall	Spring	Summer	Fall	Spring	Summer	Fall	Spring
2006-07	6,126	14,983	14,471	223	1,666	1,532	14	560	656
2007-08	5,913	15,250	14,479	266	1,580	1,668	115	540	670
2008-09	6,299	15,359	14,525	324	1,699	1,890	103	559	640
2009-10	6,786	15,662	15,397	344	1,983	2,146	183	513	725
2010-11	7,295	16,129	15,488	560	2,194	2,427	144	614	806
2011-12	7,273	16,205	5,537	807	2,784	2,702	217	755	940
2012-13	6,931	15,718	15,268	832	2,550	2,574	232	841	925
2013-14	6,682	15,640	14,573	747	2,523	2,613	263	796	968
2014-15	6,601	14,754	14,152	800	2,716	2,641	223	793	992
2015-16	6,286	14,357	13,576	876	2,485	2,336	250	804	804

	Matanuska-Susitna College			Prince William Sound College			Total UAA		
	Summer	Fall	Spring	Summer	Fall	Spring	Summer	Fall	Spring
2006-07	167	1,577	1,452	746	1,593	2,045	7,222	19,921	19,692
2007-08	169	1,535	1,630	823	1,223	1,653	7,207	19,674	19,486
2008-09	234	1,636	1,552	300	1,143	1,055	7,102	19,728	18,897
2009-10	248	1,782	1,798	253	1,286	1,283	7,646	20,368	20,242
2010-11	390	1,950	1,840	311	952	1,615	8,374	20,559	20,630
2011-12	441	2,134	1,944	518	957	1,731	8,642	20,699	20,879
2012-13	419	1,990	1,825	214	753	1,712	8,042	19,825	20,354
2013-14	473	1,914	1,822	175	834	1,328	7,711	19,629	19,205
2014-15	464	1,844	1,731	199	681	1,809	7,678	18,649	19,064
2015-16	506	1,899	1,726	92	779	1,628	7,330	18,116	17,911

Source: UA Statewide IR DSD data system at semester closing.

Notes:

1. Included are students enrolled in credit courses at the 050 level and above, including auditors.
2. Each campus reflects unduplicated student headcount.
3. Students who enrolled in multiple campuses have been counted only once in UAA total.

Undergraduate Applied, Accepted, and Enrolled Students at UAA

Table 1.07

	Fall 2011	Fall 2012	Fall 2013	Fall 2014	Fall 2015
College of Arts & Sciences					
Applied	2,479	2,384	2,363	1,898	2,082
Accepted	1,751	1,857	1,883	1,527	1,508
Enrolled	1,350	1,264	1,218	1,018	1,097
Selectivity	70.6%	77.9%	79.7%	80.5%	72.4%
Yield	77.1%	68.1%	64.7%	66.7%	72.7%
College of Business & Public Policy					
Applied	574	561	499	532	641
Accepted	399	419	414	422	475
Enrolled	315	295	270	278	344
Selectivity	69.5%	74.7%	83.0%	79.3%	74.1%
Yield	78.9%	70.4%	65.2%	65.9%	72.4%
College of Education					
Applied	231	216	237	196	183
Accepted	165	166	192	154	142
Enrolled	126	115	119	106	107
Selectivity	71.4%	76.9%	81.0%	78.6%	77.6%
Yield	76.4%	69.3%	62.0%	68.8%	75.4%
College of Engineering					
Applied	385	489	467	540	597
Accepted	284	348	362	423	448
Enrolled	238	253	220	292	325
Selectivity	73.8%	71.2%	77.5%	78.3%	75.0%
Yield	83.8%	72.7%	60.8%	69.0%	72.5%
College of Health					
Applied	929	1,324	1,443	1,494	1,700
Accepted	663	1,002	1,132	1,184	1,274
Enrolled	460	644	690	786	833
Selectivity	71.4%	75.7%	78.4%	79.3%	74.9%
Yield	69.4%	64.3%	61.0%	66.4%	65.4%
Community & Technical College					
Applied	1,067	711	665	640	635
Accepted	757	552	501	475	461
Enrolled	548	361	327	322	318
Selectivity	70.9%	77.6%	75.3%	74.2%	72.6%
Yield	72.4%	65.4%	65.3%	67.8%	69.0%
Anchorage Campus					
Applied	5,665	5,685	5,674	5,300	5,838
Accepted	4,019	4,344	4,484	4,185	4,308
Enrolled	3,037	2,932	2,844	2,802	3,024
Selectivity	70.9%	76.4%	79.0%	79.0%	73.8%
Yield	75.6%	67.5%	63.4%	67.0%	70.2%

Undergraduate Applied, Accepted, and Enrolled Students at UAA

Table 1.07

	Fall 2011	Fall 2012	Fall 2013	Fall 2014	Fall 2015
Kenai Peninsula College					
Applied	381	331	336	297	237
Accepted	309	277	292	269	224
Enrolled	262	228	234	226	168
Selectivity	81.1%	83.7%	86.9%	90.6%	94.5%
Yield	84.8%	82.3%	80.1%	84.0%	75.0%
Kodiak College					
Applied	73	96	82	81	103
Accepted	69	76	69	71	78
Enrolled	62	67	61	62	73
Selectivity	94.5%	79.2%	84.1%	87.7%	75.7%
Yield	89.9%	88.2%	88.4%	87.3%	93.6%
Matanuska-Susitna College					
Applied	445	397	379	368	369
Accepted	350	320	308	300	277
Enrolled	294	256	248	248	221
Selectivity	78.7%	80.6%	81.3%	81.5%	75.1%
Yield	84.0%	80.0%	80.5%	82.7%	79.8%
Prince William Sound College					
Applied	72	87	96	75	72
Accepted	72	84	90	57	63
Enrolled	57	54	48	40	31
Selectivity	100.0%	96.6%	93.8%	76.0%	87.5%
Yield	79.2%	64.3%	53.3%	70.2%	49.2%
UAA Total					
Applied	6,636	6,596	6,567	6,121	6,619
Accepted	4,819	5,101	5,243	4,882	4,950
Enrolled	3,712	3,537	3,435	3,378	3,517
Selectivity	72.6%	77.3%	79.8%	79.8%	74.8%
Yield	77.0%	69.3%	65.5%	69.2%	71.1%

Source: UA Statewide IR DSD data system at semester closing.

Notes:

1. Included are applicants to Associate and Baccalaureate degree programs only.
2. An applicant may be counted more than once in the report due to application submissions to multiple programs in a given Fall semester.
3. Selectivity = Accepted / Applicants; it shows the percentage of total applications that were accepted into programs.
4. Yield = Enrolled / Accepted; it refers to the percent of total accepted that enrolled in the same Fall semester.

Graduate Applied, Accepted, and Enrolled Students at UAA

Table 1.08

	Fall 2011	Fall 2012	Fall 2013	Fall 2014	Fall 2015
College of Arts & Sciences					
Applied	129	107	91	134	141
Accepted	38	39	39	43	53
Enrolled	32	32	34	37	38
Selectivity	29.5%	36.4%	42.9%	32.1%	37.6%
Yield	84.2%	82.1%	87.2%	86.0%	71.7%
College of Business & Public Policy					
Applied	93	78	57	92	95
Accepted	65	50	30	51	54
Enrolled	46	35	20	41	40
Selectivity	69.9%	64.1%	52.6%	55.4%	56.8%
Yield	70.8%	70.0%	66.7%	80.4%	74.1%
College of Education					
Applied	52	59	49	41	52
Accepted	34	42	31	16	31
Enrolled	28	34	24	10	29
Selectivity	65.4%	71.2%	63.3%	39.0%	59.6%
Yield	82.4%	81.0%	77.4%	62.5%	93.5%
College of Engineering					
Applied	68	58	51	64	61
Accepted	47	32	29	37	33
Enrolled	34	21	22	30	17
Selectivity	69.1%	55.2%	56.9%	57.8%	54.1%
Yield	72.3%	65.6%	75.9%	81.1%	51.5%
College of Health					
Applied	92	108	102	78	77
Accepted	40	48	45	35	27
Enrolled	32	36	36	23	19
Selectivity	43.5%	44.4%	44.1%	44.9%	35.1%
Yield	80.0%	75.0%	80.0%	65.7%	70.4%
Community & Technical College					
Applied	4	6	4	1	
Accepted	3	2	4		
Enrolled	3	1	3		
Selectivity	75.0%	33.3%	100.0%		
Yield	100.0%	50.0%	75.0%		
UAA Total					
Applied	438	416	354	410	426
Accepted	227	213	178	182	198
Enrolled	175	159	139	141	143
Selectivity	51.8%	51.2%	50.3%	44.4%	46.5%
Yield	77.1%	74.6%	78.1%	77.5%	72.2%

Source: UA Statewide IR DSD data system at semester closing.

Notes:

1. Included are applicants to Master's and PhD degree programs only.
2. An applicant may be counted more than once in the report due to application submissions to multiple programs in a given Fall semester.
3. Selectivity = Accepted / Applicants; it shows the percentage of total applications that were accepted into programs.
4. Yield = Enrolled / Accepted; it refers to the percent of total accepted that enrolled in the same Fall semester.

Student Credit Hours by Discipline within Campus/College

Fall Semesters 2011 - 2015

Table 2.01

	Fall 2011	Fall 2012	Fall 2013	Fall 2014	Fall 2015
Anchorage Campus					
Academic Affairs					
Counseling	23	24	43	27	53
Guidance	1,035	978	1,047	873	834
Total	1,058	1,002	1,090	900	887
College of Arts & Sciences					
Alaska Native Studies	456	519	433	393	373
American Sign Language	860	836	752	744	620
Anthropology	2,200	2,550	2,390	2,166	2,143
Art	3,037	2,867	2,658	2,308	2,490
Astronomy	439	475	455	464	471
Biology	7,323	6,993	7,043	6,836	7,569
Chemistry	3,337	3,463	3,616	3,725	3,547
Chinese	204	184	188	235	200
Communication	2,697	2,616	2,337	2,493	2,337
Creative Writing - Literary Arts	262	275	319	195	195
Dance	633	681	622	620	555
English	6,250	6,772	7,195	6,995	6,834
Environmental Studies	412	374	376	378	296
French	769	766	599	624	534
Geography	132	264	303	429	429
Geology	1,625	1,710	1,538	1,664	1,765
German	596	564	507	512	441
History	3,036	3,102	3,153	2,973	2,781
Humanities	264	228	84	87	
Interdisciplinary Studies	217	144	169	234	132
International Studies	45	96	90	85	63
Japanese	778	696	704	769	698
Journalism & Public Communication	1,048	1,025	945	778	784
Liberal Studies: Integrated Core	219	186	129	87	
Liberal Studies: Integrated Science	535	365	525	395	
Liberal Studies: Social Science	225	252	60		
Library Science	31	65	16	83	21
Linguistics	231	201	111	255	207
Mathematics	8,278	7,964	7,748	7,490	6,590
Music	2,081	2,399	2,500	2,432	2,619
National Student Exchange	228	366	225	393	217
Philosophy	2,070	2,349	2,493	2,438	2,160
Physics	1,675	1,994	2,111	2,327	2,337
Political Science	1,740	1,629	1,428	1,038	873
Psychology	6,303	5,429	5,650	6,033	5,899
Russian	374	350	348	324	180
Sociology	1,845	1,707	1,356	1,267	1,288
Spanish	1,730	1,571	1,508	1,449	1,216
Statistics	808	869	959	991	1,017
Theater	918	903	785	762	636
Women's Studies	117	261	294	255	201
Total	66,028	66,060	64,722	63,726	60,718

Student Credit Hours by Discipline within Campus/College Fall Semesters 2011 - 2015

Table 2.01

	Fall 2011	Fall 2012	Fall 2013	Fall 2014	Fall 2015
College of Business & Public Policy					
Accounting	2,601	2,922	2,844	2,736	2,796
Business Administration	5,403	5,496	5,377	5,294	5,245
Computer Information System	2,193	2,196	2,046	2,160	2,226
Economics	2,111	2,451	2,184	2,271	2,449
Logistics	138	93	228	222	285
Logistics Operation	165	186	231	246	264
Public Administration	324	287	178	226	222
Total	12,935	13,631	13,088	13,155	13,487
College of Education					
Education: Counselor Education	162	225	261	171	252
Education: Dev & Leadership	1,118	991	903	641	780
Education: Early Childhood	858	1,085	1,147	1,042	997
Education: Early Childhood Dev					59
Education: Elementary Education	449	308	430	526	434
Education: Foundations	457	423	511	530	752
Education: Physical Education	18		31		40
Education: Research	126	192	144	130	108
Education: Secondary Education	433	416	288	179	168
Education: Special Education	1,147	884	821	942	754
Education: Technology					3
Education	1,106	812	1,838	1,271	1,072
Speech Language Path				159	252
Teaching & Learning					69
Total	5,874	5,336	6,374	5,591	5,740
College of Engineering					
Arctic Engineering					177
Civil Engineering	816	971	902	801	627
Computer Science	855	1,036	1,171	1,323	1,339
Computer Systems Engineering	373	376	66	114	99
Electrical Engineering	355	543	663	724	776
Engineering Science Management	210	249	288	300	303
Engineering	1,366	607	596	608	550
Engineering Science Management	1,257	1,062	1,158	1,247	1,233
Environmental Science & Technology	121	134	109	101	85
Geographic Information System	235	304	216	144	228
Geomatics	701	657	614	285	386
Mechanical Engineering	537	429	492	497	917
Project Management	387	415	312	405	411
Total	7,213	6,783	6,587	6,549	7,131
College of Health					
Biomedical Program - WWAMI	437	460	500	520	36
COH Interprofessional					21
Civic Engagement & Learning	183	171	111	120	153
Dental Assisting	234	371	345	334	308
Dental Hygiene	438	460	452	381	375

Student Credit Hours by Discipline within Campus/College

Fall Semesters 2011 - 2015

Table 2.01

	Fall 2011	Fall 2012	Fall 2013	Fall 2014	Fall 2015
Diagnostic Medical Sonography		100	81	57	106
Dietetics & Nutrition	1,280	1,313	1,130	1,126	1,119
Disability & Long Term Support	109	64	42	49	43
Emergency Medical Technology	372	438	405	420	366
Fire Science	354	291	306	316	366
Health	51	87	54	36	36
Health Care Assisting	176	208	112	112	152
Health Science	768	950	1,172	1,262	721
Human Services	1,181	1,163	1,220	1,174	1,261
Justice	2,130	1,861	1,713	1,710	1,568
Legal Nurse Consultant					2
Legal Studies		432	561	522	561
Medical Assisting	866	834	824	845	887
Medical Laboratory Technology	617	675	639	648	658
Medicine Doctorate					357
Nursing	1,911	2,220	2,352	2,107	2,201
Nursing Doctorate					96
Nursing Science	2,721	2,706	3,005	2,962	2,708
Physical Education & Recreation	1,098	853	817	718	604
Paralegal	282				
Pharmacy Technology	285	300	204	210	201
Physical Therapist Assisting					127
Physical Education Professional	1,178	1,048	792	738	884
Radiologic Technology	405	431	394	437	454
Social Work	1,460	1,271	1,319	1,482	1,609
Total	18,536	18,707	18,550	18,286	17,979
Community & Technical College					
Accounting	186	120	144	165	69
Air Force ROTC	159	148	116	84	74
Air Traffic Control	622	567	585	356	275
American Sign Language	164	124	132	96	64
Anthropology	477	396	606	363	330
Architectural Engineer Technology	597	530	563	545	425
Art	408	369	252	213	270
Auto-Diesel Technology	1,025	814	915	747	706
Aviation Maintenance Technology	945	875	1,075	1,182	1,204
Aviation Tech/Admin/Management	1,404	1,388	1,272	1,209	1,056
Aviation/Professional Piloting	516	564	447	486	444
Biology	235	286	281	371	216
Business Administration	303	210	333	243	261
Career & Technical Education	144	119	84	29	32
Chemistry	87	162	180	177	210
Communication	771	654	621	612	588
Computer Information System	138	12	171	150	96
Computer Network Technology	994	895	992	1,175	1,000
Computer Office System	1,039	1,136	590	288	133
Construction Management	759	770	857	743	691
Creative Writing - Literary Arts		93	78		

Student Credit Hours by Discipline within Campus/College Fall Semesters 2011 - 2015

Table 2.01

	Fall 2011	Fall 2012	Fall 2013	Fall 2014	Fall 2015
Anchorage Campus - Community & Technical College (continued)					
Culinary Arts	725	704	522	596	545
Dietetics & Nutrition	93	33	105	75	66
Economics	153	180	237	192	186
English	1,677	1,617	1,833	1,530	1,221
English as Second Language	1,032	504	519	534	393
Geography	180	207	183	96	117
Geology	84	208	168	159	265
Guidance					231
History	1,215	996	921	708	546
Human Services			18		27
Interior Design	30	30			
Justice	75	78	42	12	42
Latin	36	30			
Mathematics	4,497	4,386	4,241	3,937	4,402
Medical Assisting					45
Military Science	175	113	83	128	87
Music	105	117	90	90	90
Occupational Safety & Health					634
Physical Education & Recreation	16	13	25	26	
Philosophy	345	168	429	282	474
Physical Education Professional		6		6	
Physical Education	64	23	22	16	9
Political Science	57	21	51	96	138
Preparatory English	4,089	4,044	3,380	2,585	2,036
Psychology	516	561	555	339	375
Sociology	207	84	39		
Spanish	196	244	164	124	152
Statistics	318	297	243	195	207
Technology	162	120	128	237	230
Welding Technology	890	789	725	775	650
Total	27,910	25,805	25,017	21,972	21,312
Honors College					
Complex Systems		42	45	42	9
Honors	328	300	276	249	274
Total	328	342	321	291	283
Anchorage Campus Total	139,882	137,666	135,749	130,469	127,536
Kenai Peninsula College					
Anchorage Extension Site					
Electronics Technology		30	21	40	60
Occupational Safety & Health	508	614	650	799	
Process Technology	467	521	614	598	624
Technology	21	6		3	3
Total	996	1,171	1,285	1,440	687

Student Credit Hours by Discipline within Campus/College

Fall Semesters 2011 - 2015

Table 2.01

	Fall 2011	Fall 2012	Fall 2013	Fall 2014	Fall 2015
Kachemach Bay Campus					
Alaska Native Studies				4	
Accounting	72	120	105		
American Sign Language			20	20	16
Anthropology	129	117	108	141	105
Art	51	151	129	201	241
Biology	214	192	160	338	221
Business Administration	81	66	246	177	84
Chemistry	139	127	88	73	116
Commun Education		4			12
Communication	171	153	156	174	99
Computer Information System	63				
Computer Office System	150	103	27	24	
Computer Science			126	63	
Creative Writing - Literary Arts	34	61	6		
Dance			18		
Dietetics & Nutrition		78	72	144	141
Economics				18	21
Education: Early Childhood					48
Education: Elementary Education	3	3		12	
Education: Special Education		6			
Education	10	6	7	10	8
Emergency Medical Technology	3	12	18	72	45
English	135	192	144	222	263
Environmental Studies	63	42			
Fire Science	36	12			
Geography			33		
Geology	8	5	8	4	4
Guidance	18	18			
Health Care Assisting	60	60	54	60	42
Health Science	48	57	54	60	75
History	141	75	90	36	126
Human Services	90	75	81	129	159
Humanities		27		18	
Japanese				20	
Justice	144	129	105	105	111
Library Science			1	2	
Linguistics		57	60		
Mathematics	231	232	157	220	241
Medical Assisting	18			30	15
Music	57	24	66		
Physical Education & Recreation	18	26	5	23	3
Paralegal	21				
Physics					15
Political Science		30	24	42	36
Preparatory English	30	51	39	45	30
Process Technology				6	6
Psychology	177	161	177	209	255
Social Work				36	27

Student Credit Hours by Discipline within Campus/College Fall Semesters 2011 - 2015

Table 2.01

	Fall 2011	Fall 2012	Fall 2013	Fall 2014	Fall 2015
Kenai Peninsula College - Kachemack Bay Campus (continued)					
Sociology				60	
Statistics	28		32		
Theater				48	54
Welding Technology	44		28	48	40
Total	2,487	2,472	2,444	2,894	2,659
Kenai River Campus					
Alaska Native Studies				89	97
Accounting	255	261	219	186	177
American Sign Language	116	100	44		32
Anthropology	135	165	183	216	216
Art	494	429	361	390	288
Auto-Diesel Technology	30				
Biology	475	393	501	425	385
Business Administration	240	141	246	270	210
Chemistry	561	562	561	703	626
Community Education	17	8	11	16	
Communication	522	495	513	522	486
Computer Information System	138	282	327	213	240
Computer Network Technology			40	44	
Computer Office System	87	58	12		8
Computer Science	39	33	27	42	117
Creative Writing - Literary Arts	81	51	24		
Dietetics & Nutrition	63		126	132	78
Economics	75	57	42	39	42
Education: Early Childhood	120	69	102	129	134
Education: Elementary Education	20	19	6	12	15
Education: Foundations	3		30		
Education: Special Education	3		7		
Education	62	41	16	149	174
Electronics Technology	159	116	142	153	206
Emergency Medical Technology	72	78	72	72	78
Engineering Draft-Design	4				
Engineering		10			
English	1,311	1,194	1,119	1,314	909
English as Second Language	48				
Environmental Studies				48	85
Fire Science			69	69	153
French		48	40	44	40
Geology	217	220	222	44	
Guidance	60			12	27
Health Care Assisting	60	60	54	60	60
History	321	417	225	261	162
Human Services	96	126	87	105	15
Humanities	66	54		21	
Japanese	52	36	56	60	28
Journalism & Public Communication	63	36	36		
Justice	174	144	108	99	66
Liberal Studies: Integrated Science		0		0	
Library Science	6	4	6	9	14

Student Credit Hours by Discipline within Campus/College

Fall Semesters 2011 - 2015

Table 2.01

	Fall 2011	Fall 2012	Fall 2013	Fall 2014	Fall 2015
Logistics Operation				48	39
Mathematics	1,907	1,958	1,878	2,069	2,051
Mechanical Technology	39				
Medical Assisting	51	60	57	33	30
Music	170	120	105	93	93
Occupational Safety & Health	72	28	76		36
Physical Education & Recreation	9	20	16	9	10
Paramedical Technology	168	168	168	180	168
Petroleum Technology	147	72	102	184	166
Philosophy	48	93	36	30	
Physics	163	238	322	304	357
Political Science	63	27		21	9
Preparatory English	492	363	204	80	210
Process Technology	868	1,023	917	1,042	959
Psychology	497	494	587	387	397
Russian	52	52	44	36	
Social Work		45			6
Sociology	174	192	207	150	72
Spanish	120	92	80	112	52
Statistics	240	243	260	317	341
Welding Technology	192	146	162	200	128
Women's Studies	48		48	39	
Total	11,765	11,141	10,903	11,282	10,292
Ressurrection Bay Extension Site					
Education	6				
English	36	45	24	33	21
Mathematics				36	27
Physical Education & Recreation	8	9		13	9
Political Science	30			36	36
Preparatory English	75	21	39		
Total	155	75	63	118	93
Kenai Peninsula College Total	15,403	14,859	14,695	15,734	13,731
Kodiak College					
Alaska Native Studies		96	84	43	56
Accounting	180	219	174	114	189
Agriculture	11				
Anthropology			123	111	114
Architectural Engineer Technology			6	36	
Art	121	100	72	111	59
Biology	328	296	338	363	397
Business Administration	336	255	228	249	261
Chemistry	51		56	60	67
Communication	63	99	69	72	69
Computer Information System	69	63	108	186	96
Computer Network Technology		6			
Computer Office System	181	274	218	189	105
Construction Management			17	16	

Student Credit Hours by Discipline within Campus/College Fall Semesters 2011 - 2015

Table 2.01

	Fall 2011	Fall 2012	Fall 2013	Fall 2014	Fall 2015
Kodiak College (continued)					
Economics	75	60	87	42	54
Education: Early Childhood	42	78	90	135	102
Education: Dev & Leadership		33			
Education: Elementary Education	29	21	40	16	38
Education: Special Education	48	42	42	48	96
Education	51	22	19	5	13
Electronics Technology					44
English	297	483	456	321	423
Environmental Studies	30	51	49	38	
Guidance	42	36	36	54	39
History	51	45	54	24	54
Human Services			9	27	
Humanities		12	54	33	45
Justice					42
Liberal Studies: Integrated Core				45	27
Liberal Studies: Integrated Science		190	35	40	
Library Science	1				
Logistics Operation			42		
Mathematics	270	297	282	273	246
Medical Assisting	45		66	101	92
Music	73	78	42	24	39
Occupational Safety & Health	112	112	81	53	59
Physical Education & Recreation	52	36	26	15	14
Philosophy	39	24	51	33	21
Political Science		66			
Preparatory English	177	150	87	111	114
Psychology	157	143	83	158	100
Renewable Energy		33	12		
Russian	64	68	48		
Social Work			6	36	
Sociology	87	78	159	114	153
Statistics			33	42	30
Technology	58		5	1	4
Vocational Skills	36				
Welding Technology	100	87	46	76	66
Kodiak College Total	3,276	3,653	3,533	3,415	3,328
Matanuska-Susitna College					
Accounting	228	318	321	372	294
American Sign Language	240	224	220	196	184
Anthropology	390	378	303	447	585
Architectural Engineer Technology	206	132			
Art	651	662	592	579	561
Biology	911	919	890	936	983
Business Administration	723	630	618	591	657
Chemistry	453	483	482	440	424
Communication	342	321	324	396	342
Computer Information System	96	114	99	105	105
Computer Network Technology	476	379	417	369	349

Student Credit Hours by Discipline within Campus/College

Fall Semesters 2011 - 2015

Table 2.01

	Fall 2011	Fall 2012	Fall 2013	Fall 2014	Fall 2015
Computer Office System	1,019	821	751	573	245
Computer Science	36	45	36	39	12
Construction Management	42	24			
Counseling	14	15	11		
Creative Writing - Literary Arts	66	54	42		
Dance					14
Dietetics & Nutrition	84	66	36	36	42
Economics	117	144	144	171	270
Education: Early Childhood	30	87	51	96	54
Education: Elementary Education	90	45	48	34	122
Education: Foundations	77	59	69	70	51
Emergency Medical Technology	243	156	198	156	180
Engineering	36	9	18	32	53
Engineering Science					45
English	885	810	897	1,056	1,050
French	52	76	44	64	48
Geology	83	84	68	57	
History	894	978	930	720	870
Honors	30	27			
Human Services	420	291	267	258	279
Humanities	63	48	21	42	54
Interior Design	57	48		24	
Japanese	72	112	56	104	100
Justice	114	87	117	96	81
Liberal Studies: Integrated Core			69		
Liberal Studies: Integrated Science	110	125	75	45	
Liberal Studies: Social Science	54	42	27	30	12
Logistics Operaion			24	42	24
Mathematics	1,592	1,698	1,867	1,643	1,605
Medical Assisting	105	117	108	108	99
Music	183	132	66	63	144
Paramedical Technology	192	252	252	216	180
Philosophy	228	306	207	345	255
Physics	236	193	188	194	176
Political Science	48	33	42	30	45
Preparatory English	993	903	642	498	396
Psychology	730	663	669	576	498
Refrigeration & Heating	312	397	318	222	319
Renewable Energy		27	49	63	53
Russian	56	72	52	40	52
Social Work				24	15
Sociology	183	156	225	84	198
Spanish	144	156	76	148	124
Statistics	63	69	93	87	93
Theater	48	51	48	48	102
Veterinary Assisting	194	190	199	78	50
Matanuska-Susitna College Total	14,711	14,228	13,366	12,643	12,494

Student Credit Hours by Discipline within Campus/College Fall Semesters 2011 - 2015

Table 2.01

	Fall 2011	Fall 2012	Fall 2013	Fall 2014	Fall 2015
Prince William Sound College					
Accounting	3	30		18	
Anthropology	84	48	30	30	42
Applied Statistics	6				
Art	45	102	87	24	15
Astronomy			36	40	
Biology	105	51	104	24	48
Business Administration	15	63		27	15
Chemistry	16	56		54	
Civic Engagement & Learning			30		
Communication	143	141	102	78	57
Computer Network Technology	6	4			
Computer Office System	140	89	52	29	52
Dietetics & Nutrition			33	54	39
Economics			54		
Education: Dev & Leadership					24
Education			17	5	21
Emergency Medical Technology					84
English	345	225	276	216	162
Environmental Studies	32	40			
Film				18	15
French	80				
Geology	96	50	34	76	109
Guidance	63	54	102	42	27
Health Science	100	99	86	16	
History	105	78	90	60	57
Human Services	203	209	103	145	64
Humanities	78		36	15	42
Industrial Technology	527	483	195	300	249
Justice			21	27	21
Liberal Studies: Social Science			12	24	
Marine Technology	90	60	402	302	493
Mathematics	385	256	292	207	152
Medical Assisting	39	36	72	87	63
Museum Studies			9		
Music	90	45	21	33	36
Outdoor Studies	65	48	56	66	102
Physical Education & Recreation	45	24	54	24	19
Philosophy		18	48		
Political Science	84	84	60	39	75
Psychology	171	144	102	123	33
Reading	24				
Sociology	21	27	39	75	
Spanish		16			44
Statistics				45	30
Theater	90	33		15	
Total	3,296	2,612	2,654	2,338	2,189

Student Credit Hours by Discipline within Campus/College Fall Semesters 2011 - 2015

Table 2.01

	Fall 2011	Fall 2012	Fall 2013	Fall 2014	Fall 2015
Copper Basin Extension Center					
Art	77	109	111	174	54
Biology	4	64			
Chemistry		4			
Communication		3			
English	36	24	9		15
Health Science	6	6			
Mathematics	25	154			33
Music					54
Sociology		7	36		69
Spanish	80	126	148	148	84
Total	228	497	304	322	309
Cordova Extension Center					
Biology	8				8
Chemistry		8			
Communication	9	9			
Computer Office System	41	50			12
Education					36
Emergency Medical Technology	9				
English	21	33	21	15	45
French	8				
Geology	12				
Guidance		9			
Health Science	9	30			
History		3	12		33
Mathematics	88	67		28	28
Music			2		
Outdoor Studies	3				
Psychology	3				
Reading	9				
Sociology	9	10			
Spanish		12			
Total	229	231	35	43	162
Prince William Sound College Total	3,753	3,340	2,993	2,703	2,660
UAA Total	177,025	173,746	170,336	164,964	159,749

Source: Statewide IR DSD data system at semester closing freeze.

Notes:

1. Student credit hours are based on course level, representing credit courses at the 050 level and above, and does not include auditors.
2. Totals may not equal the sum of all categories due to rounding.

Student Credit Hour Trend by Semester and Campus, AY 1991 - 2016

Table 2.02

Year	Anchorage Campus					Kenai Peninsula College					Kodiak College				
	Summer	Fall	Spring	Annual	% +/- over Prev Year	Summer	Fall	Spring	Annual	% +/- over Prev Year	Summer	Fall	Spring	Annual	% +/- over Prev Year
1990-91	22,484	110,821	105,934	239,238	6%	712	8,055	9,564	18,331	7%	22	2,640	2,130	4,792	18%
1991-92	23,737	117,208	111,203	252,148	5%	489	9,082	9,863	19,434	6%	47	2,634	2,617	5,298	11%
1992-93	27,089	115,611	113,728	256,428	2%	382	9,542	10,049	19,973	3%	22	2,237	2,718	4,977	-6%
1993-94	27,709	115,606	110,136	253,451	-1%	483	10,047	10,684	21,214	6%	58	2,688	2,860	5,606	13%
1994-95	26,250	114,612	107,170	248,031	-2%	692	9,347	9,880	19,919	-6%	12	2,633	3,126	5,771	3%
1995-96	24,913	108,247	103,925	237,084	-4%	562	9,428	9,173	19,163	-4%	24	2,732	3,156	5,912	2%
1996-97	23,423	106,185	101,807	231,415	-2%	593	9,537	10,058	20,188	5%	94	2,560	2,492	5,146	-13%
1997-98	25,674	102,048	100,960	228,682	-1%	193	8,796	8,968	17,957	-11%	105	2,271	2,485	4,861	-6%
1998-99	24,926	104,520	97,612	227,058	-1%	311	9,027	8,682	18,020	0%	68	2,385	2,162	4,615	-5%
1999-00	25,275	104,154	96,451	225,880	-1%	426	7,943	8,183	16,552	-8%	135	2,168	2,241	4,544	-2%
2000-01	22,478	103,783	98,054	224,315	-1%	607	8,602	9,084	18,293	11%	65	2,909	2,862	5,836	28%
2001-02	23,762	106,149	102,242	232,153	4%	760	9,712	9,362	19,834	8%	153	2,998	3,095	6,246	7%
2002-03	23,133	112,999	109,799	245,930	6%	359	9,274	9,065	18,698	-6%	115	3,080	3,622	6,817	9%
2003-04	27,493	119,871	116,406	263,769	7%	727	9,509	8,396	18,632	0%	137	2,935	3,120	6,192	-9%
2004-05	29,718	124,891	117,540	272,148	3%	489	8,958	8,904	18,351	-2%	101	2,406	2,529	5,036	-19%
2005-06	29,397	127,294	120,947	277,638	2%	567	9,277	8,972	18,816	3%	157	2,215	2,639	5,011	-1%
2006-07	29,102	129,625	120,528	279,254	1%	782	9,883	9,230	19,895	6%	37	2,220	2,442	4,699	-6%
2007-08	28,575	129,803	121,429	279,807	0%	885	9,567	9,708	20,160	1%	141	2,345	2,957	5,443	16%
2008-09	30,409	131,305	123,090	284,803	2%	1,228	10,137	10,707	22,072	10%	188	2,387	2,696	5,271	-3%
2009-10	31,438	135,284	128,769	295,490	4%	1,326	12,270	12,901	26,497	20%	466	2,027	3,000	5,493	4%
2010-11	33,916	138,504	130,713	303,132	3%	2,116	13,141	13,815	29,072	10%	400	2,555	3,652	6,607	20%
2011-12	33,418	139,882	132,334	305,633	1%	3,040	15,403	15,301	33,744	16%	648	3,276	4,134	8,058	22%
2012-13	32,196	137,666	130,075	299,937	-2%	3,237	14,859	14,755	32,851	-3%	733	3,653	3,876	8,262	3%
2013-14	31,078	135,749	124,372	291,199	-3%	2,792	14,695	14,840	32,327	-2%	784	3,533	4,293	8,610	4%
2014-15	29,491	130,469	122,128	282,088	-3%	3,030	15,734	14,823	33,587	4%	699	3,415	4,201	8,315	-3%
2015-16	28,408	127,536	118,447	274,390	-3%	3,417	13,731	12,487	29,635	-12%	794	3,328	3,471	7,593	-9%

Student Credit Hour Trend by Semester and Campus, AY 1991 - 2016

Table 2.02

Year	Matanuska-Susitna College					Prince William Sound College					Total UAA				
	Summer	Fall	Spring	Annual	% +/- over Prev Year	Summer	Fall	Spring	Annual	% +/- over Prev Year	Summer	Fall	Spring	Annual	% +/- over Prev Year
1990-91	495	8,342	8,144	16,981	5%	209	2,001	1,877	4,087	4%	24,389	135,530	130,998	290,916	7%
1991-92	433	9,322	9,659	19,414	14%	314	1,877	1,853	4,044	-1%	25,895	143,720	139,097	308,711	6%
1992-93	800	10,425	10,464	21,689	12%	314	2,616	2,932	5,862	45%	29,780	144,348	143,496	317,623	3%
1993-94	815	9,475	9,396	19,686	-9%	471	2,999	3,679	7,148	22%	30,522	144,349	139,465	314,336	-1%
1994-95	480	10,021	10,557	21,058	7%	722	3,413	3,550	7,685	8%	28,835	142,704	137,294	308,833	-2%
1995-96	1,363	9,774	9,934	21,071	0%	376	3,625	3,671	7,671	0%	28,047	136,594	132,454	297,095	-4%
1996-97	1,437	8,997	10,136	20,570	-2%	508	3,987	4,351	8,846	15%	26,945	133,675	131,041	291,661	-2%
1997-98	1,390	8,690	9,166	19,246	-6%	364	4,364	4,392	9,120	3%	28,542	128,275	128,302	285,119	-2%
1998-99	1,211	8,289	8,515	18,015	-6%	808	4,484	3,930	9,221	1%	28,080	130,313	123,104	281,497	-1%
1999-00	1,295	8,853	9,935	20,083	12%	760	4,103	4,013	8,875	-4%	28,472	128,644	122,331	279,447	-1%
2000-01	1,024	9,102	8,735	18,861	-6%	935	3,887	4,355	9,177	3%	25,559	130,199	124,875	280,633	0%
2001-02	920	9,614	10,033	20,567	9%	897	3,785	4,472	9,153	0%	27,183	133,997	130,946	292,125	4%
2002-03	1,541	10,445	11,036	23,022	12%	988	4,709	4,766	10,463	14%	26,651	142,393	140,069	309,113	6%
2003-04	1,395	11,335	10,696	23,426	2%	1,132	4,417	5,736	11,284	8%	31,545	149,632	145,849	327,026	6%
2004-05	690	10,099	9,379	20,168	-14%	657	4,384	5,112	10,153	-10%	32,020	152,121	144,454	328,596	1%
2005-06	569	10,579	9,493	20,641	2%	913	3,911	4,719	9,542	-6%	32,056	153,276	146,770	332,101	1%
2006-07	592	10,323	9,246	20,161	-2%	937	4,454	4,986	10,378	9%	31,450	156,505	146,432	334,386	1%
2007-08	567	10,461	9,870	20,898	4%	1,258	3,805	4,324	9,388	-10%	31,426	155,981	148,288	335,695	0%
2008-09	841	10,699	9,936	21,476	3%	418	3,696	3,050	7,164	-24%	33,083	158,224	149,478	340,786	2%
2009-10	977	12,271	11,985	25,233	18%	484	4,187	3,757	8,428	18%	34,691	166,038	160,412	361,141	6%
2010-11	1,778	13,609	12,751	28,138	12%	642	3,441	4,441	8,524	1%	38,852	171,249	165,372	375,473	4%
2011-12	1,847	14,711	13,421	29,979	7%	1,091	3,754	4,279	9,122	7%	40,043	177,025	169,469	386,536	3%
2012-13	1,912	14,228	12,361	28,501	-5%	552	3,340	4,270	8,162	-11%	38,630	173,746	165,337	377,712	-2%
2013-14	2,084	13,366	12,407	27,857	-2%	345	2,993	3,839	7,177	-12%	37,083	170,336	159,751	367,170	-3%
2014-15	2,112	12,643	11,225	25,980	-7%	434	2,703	4,293	7,430	4%	35,766	164,964	156,670	357,400	-3%
2015-16	2,122	12,494	11,358	25,974	0%	273	2,660	3,591	6,524	-12%	35,014	159,749	149,354	344,116	-4%

Source: Statewide IR DSD data system at semester closing freeze.

Notes:

1. Student Credit Hours are based on credit courses at the 050 course level and above, and do not include auditors.
2. For Fall 1996, University of Alaska Learning Cooperative (UALC) and/or Rural Delivery (RD) credit headcount is included in the Anchorage column.
3. Prior to AY 2005, Total UAA includes SCH generated by Military Programs.

e-Learning: Origin of Courses vs. Origin of Students Admitted, AY 2012 - 2016

Table 2.03

Campus that Provides Distance Courses	Matriculation Campus																				
	Headcount							Enrollment (Seat Count)							Student Credit Hours						
	Anchorage	Kenai	Kodiak	Mat-Su	PWSC	Non UAA	TOTAL	Anchorage	Kenai	Kodiak	Mat-Su	PWSC	Non UAA	TOTAL	Anchorage	Kenai	Kodiak	Mat-Su	PWSC	Non UAA	TOTAL
Anchorage Campus																					
2011-2012	7,024	128	32	154	6	235	7,550	13,458	176	52	231	8	278	14,203	38,035	490	115	635	22	758	40,055
2012-2013	7,405	128	32	153	16	268	7,971	14,221	174	37	231	32	329	15,024	40,677	484	99	640	81	884	42,865
2013-2014	7,813	141	35	166	20	301	8,446	15,315	218	54	244	24	394	16,249	43,955	574	150	708	48	1,012	46,447
2014-2015	8,204	128	34	139	14	339	8,825	16,266	178	50	239	17	412	17,162	46,933	503	137	699	45	1,085	49,402
2015-2016	8,661	109	34	172	12	336	9,287	17,900	129	46	258	20	424	18,777	52,286	386	136	763	58	1,151	54,780
Kenai Peninsula College																					
2011-2012	2,268	806	28	165	8	111	3,344	3,770	1,737	35	310	9	141	6,002	10,890	4,936	105	912	27	408	17,278
2012-2013	2,149	861	40	148	2	111	3,283	3,796	1,971	53	246	3	143	6,212	11,197	5,733	163	715	5	408	18,221
2013-2014	2,228	834	51	150	11	115	3,365	3,683	1,946	79	261	15	141	6,125	10,928	5,675	242	773	45	412	18,075
2014-2015	2,246	844	53	135	9	137	3,398	3,665	1,999	75	221	12	172	6,144	11,086	5,980	228	665	36	526	18,521
2015-2016	2,300	757	46	131	12	191	3,385	3,755	1,712	77	200	17	226	5,987	11,310	4,941	227	605	51	745	17,879
Kodiak College																					
2011-2012	597	46	181	40		48	908	827	58	392	65		61	1,403	2,208	174	994	168		153	3,697
2012-2013	758	57	215	38	2	40	1,109	1,077	74	452	57	4	49	1,713	2,955	219	1,109	145	5	122	4,555
2013-2014	805	58	183	69	4	61	1,169	1,223	84	367	90	4	76	1,844	3,373	209	954	248	11	215	5,010
2014-2015	889	55	177	49	3	42	1,207	1,310	80	350	77	4	47	1,868	3,555	220	885	203	10	122	4,995
2015-2016	848	32	214	46	9	57	1,202	1,269	41	424	69	10	72	1,885	3,447	118	1,113	189	24	189	5,080
Matanuska-Susitna College																					
2011-2012	384	11	5	170		10	576	445	12	5	225		10	697	1,319	36	13	620		32	2,020
2012-2013	506	12	9	205	2	14	745	597	14	9	266	2	14	902	1,781	37	23	715	5	40	2,601
2013-2014	670	24	10	304	1	22	1,023	856	28	16	512	1	23	1,436	2,444	84	39	1,204	3	68	3,842
2014-2015	870	20	6	359	4	27	1,281	1,135	23	6	595	5	29	1,793	3,236	63	16	1,523	13	83	4,934
2015-2016	911	24	9	358	3	39	1,331	1,216	41	15	588	3	49	1,912	3,585	102	40	1,621	9	131	5,488

e-Learning: Origin of Courses vs. Origin of Students Admitted, AY 2012 - 2016

Table 2.03

Campus that Provides Distance Courses	Matriculation Campus																				
	Headcount							Enrollment (Seat Count)							Student Credit Hours						
	Anchorage	Kenai	Kodiak	Mat-Su	PWSC	Non UAA	TOTAL	Anchorage	Kenai	Kodiak	Mat-Su	PWSC	Non UAA	TOTAL	Anchorage	Kenai	Kodiak	Mat-Su	PWSC	Non UAA	TOTAL
Prince William Sound College																					
2011-2012	318	24	10	52	200	71	663	455	35	12	77	562	102	1,243	1,328	93	36	227	1,434	282	3,400
2012-2013	216	14	12	18	229	77	561	285	26	16	21	572	91	1,011	827	57	42	62	1,558	265	2,811
2013-2014	210	21	6	25	208	70	536	274	25	7	36	545	89	976	823	73	19	111	1,526	266	2,817
2014-2015	207	16	6	16	162	37	442	276	20	8	17	436	48	805	776	56	20	49	1,213	137	2,251
2015-2016	125	10	7	3	131	41	315	167	10	10	3	323	54	567	460	32	24	9	923	153	1,601
UAA Total																					
2011-2012	8,398	866	217	417	207	433	10,439	18,955	2,018	496	908	579	592	23,548	53,780	5,729	1,263	2,562	1,483	1,633	66,450
2012-2013	8,734	909	246	409	236	462	10,906	19,976	2,259	567	821	613	626	24,862	57,437	6,530	1,436	2,277	1,654	1,719	71,053
2013-2014	9,247	920	212	502	224	506	11,521	21,351	2,301	523	1,143	589	723	26,630	61,523	6,615	1,404	3,044	1,633	1,973	76,192
2014-2015	9,643	913	209	507	172	528	11,883	22,652	2,300	489	1,149	474	708	27,772	65,586	6,822	1,286	3,139	1,317	1,953	80,103
2015-2016	10,008	808	247	521	145	606	12,198	24,307	1,933	572	1,118	373	825	29,128	71,088	5,579	1,540	3,187	1,065	2,369	84,828

Source: AY 2013 - AY 2015: Statewide IR DSD data system at semester closing freeze. Prior to AY 2012, data was extracted from Banner Statewide Student Information tables at semester closing freeze.

*New Banner codes for distance delivery were introduced in FY12. UAA began using the new codes in Summer 2011 while SW recognized the new codes beginning in Fall 2011, resulting in a variance in official counts (SW = 56,205; UAA = 66,450) for FY12.

Notes:

1. Enrollment includes auditors; Student credit hours include audit hours.
2. Courses included in this report are session codes "X"/"Y", Anchorage section codes beginning with 2, 5, or 8, or attendance methods AC, CW, EP, VC, VI, VW, WW, TC, X, Y, SI for years prior to AY12. Beginning Fall 2012, session codes 0, 1, and 2 were also included.
3. An Academic Year (AY) includes Summer, Fall and Spring semesters, starting with Summer as the first term counted.
4. Totals may not equal the sum of all categories due to rounding.

Attendance Method Codes:

AC = Audio Conference	VW = Video Conference and Web-based
CW = Correspondence: Web-based Instruction	WW = Web-based
EP = eLearning Agreement Primary	TC = Telecourse
EA = eLearning Agreement	X = Distance Teaching-Group
VC = Video Conference	Y = Distance Teaching-Independent
VI = Video	SI = Live Broadcast via Satellite

Awards

Degree and Certificate Awards Conferred by Type and Campus Academic Years 2012 - 2016

Table 3.01

Degree Type	Academic Year					Total 2012-2016	% Change 2012-2016
	2011-12	2012-13	2013-14	2014-15	2015-16		
Anchorage Campus							
Licensure/Post Certificate	66	64	98	93	88	409	33.3%
Occupational Endorsement	116	114	136	96	94	556	-19.0%
Certificate	51	45	54	59	59	268	15.7%
Associate	500	559	587	579	577	2,802	15.4%
Baccalaureate	971	1,064	1,131	1,094	1,177	5,437	21.2%
Master	276	312	268	293	251	1,400	-9.1%
Doctorate		2	3	1	1	7	
Total	1,980	2,160	2,277	2,215	2,247	10,879	13.5%
Kenai Peninsula College							
Occupational Endorsement	2		2			4	-100.0%
Certificate	14	9	9	12	7	51	-50.0%
Associate	114	137	152	157	118	678	3.5%
Total	130	146	163	169	125	733	-3.8%
Kodiak College							
Occupational Endorsement	1	1	1	6	1	10	0.0%
Certificate			1			1	
Associate	29	14	22	22	22	109	-24.1%
Total	30	15	24	28	23	120	-23.3%
Matanuska-Susitna College							
Occupational Endorsement	18	20	23	28	11	100	-38.9%
Certificate	2	2	2	4	1	11	-50.0%
Associate	116	133	125	106	118	598	1.7%
Total	136	155	150	138	130	709	-4.4%
Prince William Sound College							
Occupational Endorsement	16	1		2	5	24	-68.8%
Certificate		1				1	
Associate	15	11	19	9	23	77	53.3%
Total	31	13	19	11	28	102	-9.7%
UAA Total							
Licensure/Post Certificate	66	64	98	93	88	409	33.3%
Occupational Endorsement	153	136	162	132	111	694	-27.5%
Certificate	67	57	66	75	67	332	0.0%
Associate	774	854	905	873	858	4,264	10.9%
Baccalaureate	971	1,064	1,131	1,094	1,177	5,437	21.2%
Master	276	312	268	293	251	1,400	-9.1%
Doctorate		2	3	1	1	7	
Total	2,307	2,489	2,633	2,561	2,553	12,543	10.7%

Degree and Certificate Awards Conferred by Award Type Academic Years 2012 - 2016

Table 3.02

Degree Type	Academic Year					Total 2012-2016	% Change 2012-2016
	2011-12	2012-13	2013-14	2014-15	2015-16		
Associate of Applied Science	518	569	608	607	587	2,889	13.3%
Associate of Arts	256	285	297	266	271	1,375	5.9%
Bachelor of Arts	405	386	426	375	414	2,006	2.2%
Bachelor of Business Admin	149	197	197	191	219	953	47.0%
Bachelor of Fine Arts	6	2	6	6	3	23	-50.0%
Bachelor of Human Services	28	15	13	15	13	84	-53.6%
Bachelor of Liberal Studies	6	4	3	5	1	19	-83.3%
Bachelor of Music	10	6	13	8	9	46	-10.0%
Bachelor of Science	354	435	454	472	488	2,203	37.9%
Bachelor of Social Work	13	19	19	22	30	103	130.8%
Certificate	67	57	66	75	67	332	0.0%
Doctor of Philosophy		2	3	1	1	7	
Graduate Certificate	59	60	86	86	85	376	44.1%
Master - Other	5	2	3	3	1	14	-80.0%
Master of Arts	9	8	10	12	12	51	33.3%
Master of Arts in Teaching	36	34	33	23	15	141	-58.3%
Master of Business Admin	34	54	35	41	36	200	5.9%
Master of Civil Engineering	1	1	4	2	3	11	200.0%
Master of Education	83	76	64	59	47	329	-43.4%
Master of Fine Arts	10	9	6	13	9	47	-10.0%
Master of Public Admin	12	16	6	12	10	56	-16.7%
Master of Public Health	4	10	20	12	17	63	325.0%
Master of Science	60	75	66	87	85	373	41.7%
Master of Social Work	22	27	21	29	16	115	-27.3%
Occupational Endorsement Cert	153	136	162	132	111	694	-27.5%
Post Baccalaureate Cert	7	4	12	7	3	33	-57.1%
Total	2,307	2,489	2,633	2,561	2,553	12,543	10.7%

Source: UA Statewide IR DSD Degrees data table compiled by UAA IR.

High Demand Job Area Degree and Certificate Awards Conferred Academic Years 2012 - 2016

Table 3.03

High Demand Job Area Programs	Number of Awards in High Demand Job Areas				
	2011-12	2012-13	2013-14	2014-15	2015-16
Total	1,662	1,790	1,824	1,801	1,777
By Campus					
Anchorage Campus	1,500	1,613	1,612	1,604	1,612
Kenai Peninsula College	85	105	122	124	97
Kodiak College	17	6	11	7	7
Matanuska-Susitna College	56	57	66	62	54
Prince William Sound College	4	9	13	4	7
By Anchorage Colleges					
College of Arts & Sciences	192	215	243	205	224
College of Business & Public Policy	247	317	304	346	342
College of Education	220	206	217	186	166
College of Engineering	112	145	128	144	145
College of Health	414	508	475	520	529
Community and Technical College	315	222	245	203	206
By Job Areas					
Business, Finance and Management	362	388	373	397	398
Construction	23	21	20	26	24
Engineering and Related	116	121	125	115	115
Health	541	688	665	665	702
Information Technology	90	81	55	57	48
Natural Resources	71	90	112	101	103
Other/Regional	10	6	8	2	
Process Technology	80	92	118	124	110
Teacher Education	232	218	228	197	176
Transportation	137	85	120	117	101
All Programs	2,307	2,489	2,633	2,561	2,553
% High Demand Awards	72.0%	71.9%	69.3%	70.3%	69.6%

Source: UA Statewide IR DSD Degrees data table compiled by UAA IR.

Notes:

High Demand Job Area (HDJA) programs include nursing, allied health, behavioral health, engineering, welding, computer networking, construction management and technology, information technology, business, accounting, logistics, and many others aligned with the Alaska Department of Labor and Workforce Development (DoLWD) workforce projections. The HDJA programs list is reviewed each time DoLWD produces a new Occupational Forecast. The last update made to the list was based on the 2008-2018 Occupational Forecast, released in September 2010.

Degree and Certificate Awards Conferred UAA Academic Years 1988 - 2016

Table 3.04

Year	Conferred								Cumulative							
	Post Cert	Occupat'l	Cert	Assoc	Bachelor	Master's	Doctorate	Total	Post Cert	Occupat'l	Cert	Assoc	Bachelor	Master's	Doctorate	Total
1988-1995			805	4,260	4,670	1,144		10,879			805	4,260	4,670	1,144		10,879
1995-96			110	679	833	180		1,802			915	4,939	5,503	1,324		12,681
1996-97			89	629	749	235		1,702			1,004	5,568	6,252	1,559		14,383
1997-98			86	603	770	222		1,681			1,090	6,171	7,022	1,781		16,064
1998-99			91	563	708	263		1,625			1,181	6,734	7,730	2,044		17,689
1999-00			71	478	724	203		1,476			1,252	7,212	8,454	2,247		19,165
2000-01			61	515	705	178		1,459			1,313	7,727	9,159	2,425		20,624
2001-02			74	547	766	159		1,546			1,387	8,274	9,925	2,584		22,170
2002-03			88	530	770	204		1,592			1,475	8,804	10,695	2,788		23,762
2003-04			91	601	785	241		1,718			1,566	9,405	11,480	3,029		25,480
2004-05	16		107	523	778	263		1,687	16		1,673	9,928	12,258	3,292		27,167
2005-06	22		108	634	841	238		1,843	38		1,781	10,562	13,099	3,530		29,010
2006-07	44		99	676	847	356		2,022	82		1,880	11,238	13,946	3,886		31,032
2007-08	50	47	85	679	871	289		2,021	132	47	1,965	11,917	14,817	4,175		33,053
2008-09	38	49	74	684	956	270		2,071	170	96	2,039	12,601	15,773	4,445		35,124
2009-10	60	116	60	719	920	296		2,171	230	212	2,099	13,320	16,693	4,741		37,295
2010-11	63	123	78	756	1,001	305		2,326	293	335	2,177	14,076	17,694	5,046		39,621
2011-12	66	153	67	774	971	276		2,307	359	488	2,244	14,850	18,665	5,322		41,928
2012-13	64	136	57	854	1,064	312	2	2,489	423	624	2,301	15,704	19,729	5,634	2	44,417
2013-14	98	162	66	905	1,131	268	3	2,633	521	786	2,367	16,609	20,860	5,902	5	47,050
2014-15	93	132	75	873	1,094	293	1	2,561	614	918	2,442	17,482	21,954	6,195	6	49,611
2015-16	88	111	67	858	1,177	251	1	2,553	702	1,029	2,509	18,340	23,131	6,446	7	52,164

Source: UA Statewide IR DSD Degrees data table, except data for 1987-1988, is collected in UAA Semester Report by UAA IR.

Faculty and Staff

Employee Headcount Trends by UAA Governance Unit, Fall 2011 - Fall 2015

All Employees

Table 4.01

	Fall 2011			Fall 2012			Fall 2013			Fall 2014			Fall 2015		
	Faculty	Non Faculty	Total	Faculty	Non Faculty	Total	Faculty	Non Faculty	Total	Faculty	Non Faculty	Total	Faculty	Non Faculty	Total
Anchorage Campus															
College of Arts & Sciences	364	244	608	368	257	625	366	222	588	347	235	582	326	230	556
College of Business & Public Policy	81	88	169	86	97	183	79	86	165	87	86	173	83	77	160
College of Education	62	24	86	56	21	77	58	21	79	56	19	75	52	19	71
College of Engineering	49	64	113	57	96	153	58	60	118	56	59	115	52	79	131
College of Health	206	164	370	204	162	366	205	160	365	198	179	377	209	176	385
Community & Technical College	245	145	390	239	146	385	238	156	394	222	155	377	192	151	343
Consortium Library	24	70	94	26	70	96	27	69	96	29	63	92	27	73	100
Chancellor's Office		9	9		9	9		11	11		11	11		10	10
Provost Operations	8	108	116	12	96	108	8	115	123	12	137	149	20	149	169
VC, Administrative Operation	1	537	538	2	524	526	2	543	545	3	533	536		490	490
VC, Inst. Eff., Engage/Acad Support	3	10	13	3	10	13	4	12	16						
VC, Student Affairs	4	351	355	2	323	325	3	336	339	3	333	336	1	328	329
VC, University Advancement		35	35		42	42		34	34		36	36		37	37
Anchorage Campus Total	1,047	1,849	2,896	1,055	1,853	2,908	1,048	1,825	2,873	1,013	1,846	2,859	962	1,819	2,781
Kenai Peninsula College	148	127	275	145	148	293	146	140	286	152	146	298	127	137	264
Kodiak College	35	39	74	35	39	74	38	39	77	39	41	80	37	37	74
Matanuska Susitna College	110	67	177	116	69	185	114	79	193	109	77	186	110	79	189
Prince William Sound College	34	55	89	39	48	87	39	54	93	35	51	86	38	50	88
UAA Total	1,374	2,137	3,511	1,390	2,157	3,547	1,385	2,137	3,522	1,348	2,161	3,509	1,274	2,122	3,396

Employee Headcount Trends by UAA Governance Unit, Fall 2011 - Fall 2015

Regular and Term Employees

Table 4.01a

	Fall 2011			Fall 2012			Fall 2013			Fall 2014			Fall 2015		
	Faculty	Non Faculty	Total	Faculty	Non Faculty	Total	Faculty	Non Faculty	Total	Faculty	Non Faculty	Total	Faculty	Non Faculty	Total
Anchorage Campus															
College of Arts & Sciences	224	81	305	228	82	310	228	83	311	212	81	293	197	82	279
College of Business & Public Policy	64	45	109	59	45	104	60	49	109	62	44	106	59	37	96
College of Education	35	21	56	28	16	44	28	17	45	28	15	43	26	13	39
College of Engineering	32	13	45	39	13	52	41	17	58	41	15	56	40	18	58
College of Health	123	117	240	131	121	252	133	119	252	130	125	255	134	120	254
Community & Technical College	65	62	127	65	60	125	72	69	141	69	65	134	60	54	114
Consortium Library	24	30	54	26	32	58	27	29	56	29	28	57	27	27	54
Chancellor's Office		8	8		9	9		11	11		11	11		8	8
Provost Operations	6	64	70	8	56	64	6	65	71	8	76	84	15	91	106
VC, Administrative Operation		302	302	1	299	300	2	315	317	3	317	320		308	308
VC, Inst. Eff., Engage/Acad Support	2	8	10	1	9	10	3	8	11						
VC, Student Affairs	1	146	147	1	147	148	1	148	149	1	152	153	1	145	146
VC, University Advancement		23	23		28	28		22	22		25	25		23	23
Anchorage Campus Total	576	920	1,496	587	917	1,504	601	952	1,553	583	954	1,537	559	926	1,485
Kenai Peninsula College	41	59	100	41	64	105	42	73	115	42	69	111	39	69	108
Kodiak College	11	23	34	15	25	40	16	23	39	14	27	41	13	28	41
Matanuska Susitna College	29	40	69	29	43	72	30	43	73	31	44	75	30	43	73
Prince William Sound College	10	35	45	8	31	39	8	30	38	9	29	38	7	32	39
UAA Total	667	1,077	1,744	680	1,080	1,760	697	1,121	1,818	679	1,123	1,802	648	1,098	1,746

Employee Headcount Trends by UAA Governance Unit, Fall 2011 - Fall 2015

Temporary Employees

Table 4.01b

	Fall 2011			Fall 2012			Fall 2013			Fall 2014			Fall 2015		
	Faculty	Non Faculty	Total	Faculty	Non Faculty	Total	Faculty	Non Faculty	Total	Faculty	Non Faculty	Total	Faculty	Non Faculty	Total
Anchorage Campus															
College of Arts & Sciences	140	163	303	140	175	315	138	139	277	135	154	289	129	148	277
College of Business & Public Policy	17	43	60	27	52	79	19	37	56	25	42	67	24	40	64
College of Education	27	3	30	28	5	33	30	4	34	28	4	32	26	6	32
College of Engineering	17	51	68	18	83	101	17	43	60	15	44	59	12	61	73
College of Health	83	47	130	73	41	114	72	41	113	68	54	122	75	56	131
Community & Technical College	180	83	263	174	86	260	166	87	253	153	90	243	132	97	229
Consortium Library		40	40		38	38		40	40		35	35		46	46
Chancellor's Office		1	1											2	2
Provost Operations	2	44	46	4	40	44	2	50	52	4	61	65	5	58	63
VC, Administrative Operation	1	235	236	1	225	226		228	228		216	216		182	182
VC, Inst. Eff., Engage/Acad Support	1	2	3	2	1	3	1	4	5						
VC, Student Affairs	3	205	208	1	176	177	2	188	190	2	181	183		183	183
VC, University Advancement		12	12		14	14		12	12		11	11		14	14
Anchorage Campus Total	471	929	1,400	468	936	1,404	447	873	1,320	430	892	1,322	403	893	1,296
Kenai Peninsula College															
Kenai Peninsula College	107	68	175	104	84	188	104	67	171	110	77	187	88	68	156
Kodiak College															
Kodiak College	24	16	40	20	14	34	22	16	38	25	14	39	24	9	33
Matanuska Susitna College															
Matanuska Susitna College	81	27	108	87	26	113	84	36	120	78	33	111	80	36	116
Prince William Sound College															
Prince William Sound College	24	20	44	31	17	48	31	24	55	26	22	48	31	18	49
UAA Total	707	1,060	1,767	710	1,077	1,787	688	1,016	1,704	669	1,038	1,707	626	1,024	1,650

Source: The data in this section (Tables 4.01 - 4.07) is extracted from Banner Statewide H Tables at Fall freeze.

Note: Faculty members in this report are based on Human Resources EEO classification.

Employee Characteristics by UAA Campus, Fall 2015

Table 4.02

	Anchorage	Kenai	Kodiak	Mat-Su	PWSC	UAA Total
Total	2,781	264	74	189	88	3,396
Job Classification						
Executive	22	1	1	1	1	26
Faculty	962	127	37	110	38	1,274
Professional	523	30	8	8	9	578
Paraprofessional	339	36	23	29	14	441
Clerical	153	18	2	15	4	192
Skilled	49	4	1	2	2	58
Maintenance	59	12	2	2	12	87
Graduate Assistant	52					52
Student Assistant	622	36		22	8	688
Gender						
Female	1,603	153	52	125	49	1,982
Male	1,178	111	22	64	39	1,414
Race/Ethnicity						
African American	81	2	2	2		87
AK Native & Am Indian	87	9	4	3		103
AK Native & Am Indian Multirace	113	7	4	6	3	133
Asian	136	6	2	5	2	151
Hispanic	143	5	1	10	2	161
Hispanic Multirace	5					5
Native Hawaiian/Pacific Is	15	2		1		18
White	2,010	219	59	159	75	2,522
Non HispanicMultirace	58		1		1	60
Non Resident Alien	72				2	74
Not Reported	61	14	1	3	3	82
Workload						
Full-time	1,398	92	38	71	37	1,636
Part-time	1,383	172	36	118	51	1,760
Governance Unit						
College of Arts & Sciences	567					567
College of Business & Public Policy	149					149
College of Education	71					71
College of Engineering	131					131
College of Health	385					385
Community & Technical College	343					343
Consortium Library	100					100
Chancellor's Office	10					10
Provost Operations	169					169
VC, Administrative Operation	490					490
VC, Student Affairs	329					329
VC, University Advancement	37					37
Community Campuses' Total		264	74	189	88	615

Regular and Term Employee Characteristics by Campus, Fall 2015

Table 4.02a

	Anchorage	Kenai	Kodiak	Mat-Su	PWSC	UAA Total
Total	1,485	108	41	73	39	1,746
Job Classification						
Executive	22	1	1	1	1	26
Faculty	559	39	13	30	7	648
Professional	438	24	8	8	9	487
Paraprofessional	292	27	14	21	13	367
Clerical	86	9	2	9	3	109
Skilled	48	4	1	2	2	57
Maintenance	40	4	2	2	4	52
Gender						
Female	872	63	26	45	20	1,026
Male	613	45	15	28	19	720
Race/Ethnicity						
African American	41		2	1		44
AK Native & Am Indian	45	4	2	1		52
AK Native & Am Indian Multirace	53	4	1	3	2	63
Asian	66	3	1	1	1	72
Hispanic	69	3	1	3	1	77
Hispanic Multirace	3					3
Native Hawaiian/Pacific Is	7	1				8
White	1,126	86	32	62	32	1,338
Non Hispanic Multirace	21		1		1	23
Non Resident Alien	13					13
Unspecified	41	7	1	2	2	53
Workload						
Full-time	1,368	92	38	70	36	1,604
Part-time	117	16	3	3	3	142
Governance Unit						
College of Arts & Sciences	286					286
College of Business & Public Policy	89					89
College of Education	39					39
College of Engineering	58					58
College of Health	254					254
Community & Technical College	114					114
Consortium Library	54					54
Chancellor's Office	8					8
Provost Operations	106					106
VC, Administrative Operation	308					308
VC, Student Affairs	146					146
VC, University Advancement	23					23
Community Campuses' Total		108	41	73	39	261

Temporary Employee Characteristics by Campus, Fall 2015

Table 4.02b

	Anchorage	Kenai	Kodiak	Mat-Su	PWSC	UAA Total
Total	1,296	156	33	116	49	1,650
Job Classification						
Faculty	403	88	24	80	31	626
Professional	85	6				91
Paraprofessional	47	9	9	8	1	74
Clerical	67	9		6	1	83
Skilled	1					1
Maintenance	19	8			8	35
Graduate Assistant	52					52
Student Assistant	622	36		22	8	688
Gender						
Female	731	90	26	80	29	956
Male	565	66	7	36	20	694
Race/Ethnicity						
African American	40	2		1		43
AK Native & Am Indian	42	5	2	2		51
AK Native & Am Indian Multirace	60	3	3	3	1	70
Asian	70	3	1	4	1	79
Hispanic	74	2		7	1	84
Hispanic Multirace	2					2
Native Hawaiian/Pacific Is	8	1		1		10
White	884	133	27	97	43	1,184
Non Hispanic Multirace	37					37
Non Resident Alien	59				2	61
Unspecified	20	7		1	1	29
Workload						
Full-time	30			1	1	32
Part-time	1,266	156	33	115	48	1,618
Governance Unit						
College of Arts & Sciences	281					281
College of Business & Public Policy	60					60
College of Education	32					32
College of Engineering	73					73
College of Health	131					131
Community & Technical College	229					229
Consortium Library	46					46
Chancellor's Office	2					2
Provost Operations	63					63
VC, Administrative Operation	182					182
VC, Student Affairs	183					183
VC, University Advancement	14					14
Community Campuses' Total		156	33	116	49	354

Regular and Term Faculty Characteristics by Campus, Fall 2015

Table 4.03

	Anchorage	Kenai	Kodiak	Mat-Su	PWSC	UAA Total
Total	559	39	13	30	7	648
Faculty Classification						
ACCFT and UACAD Faculty	497	35	12	28	6	578
Non Rep Faculty 12 Month	46		1	2	1	50
Non Rep Faculty Less 12 Month	16	4				20
Academic Rank						
Professor	142	2		3		147
Associate Professor	138	16	5	7	2	168
Assistant Professor	205	20	8	19	3	255
Instructor	74	1		1	2	78
Tenure Status						
Tenured	255	16	5	10		286
Tenure Track	139	10	1	6	1	157
Non-Tenure Track	165	13	7	14	6	205
Contract Type						
Bipartite	271	37	13	30	7	358
Tripartite	280	2				282
Not Assigned	8					8
Workload Type						
Full-time	530	39	13	30	7	619
Part-time	29					29
Gender						
Female	290	18	9	17	2	336
Male	269	21	4	13	5	312
Race/Ethnicity						
African American	8					8
AK Native & Am Indian	19					19
AK Native & Am Indian Multirace	14	1				15
Asian	38	2				40
Hispanic	13					13
White	439	34	12	30	6	521
Non Hispanic Multirace	2					2
Non Resident Alien	6					6
Unspecified	20	2	1		1	24
Highest Degree						
Doctorate	308	12	5	15	1	341
Master's	182	20	7	10	3	222
Bachelor	29	3		2	1	35
Associate	10	2		1		13
Certificate	1					1
Unkown	29	2	1	2	2	36

Regular and Term Faculty Characteristics by Campus, Fall 2015

Table 4.03

	Anchorage	Kenai	Kodiak	Mat-Su	PWSC	UAA Total
Governance Unit						
College of Arts & Sciences	199					199
College of Business & Public Policy	57					57
College of Education	26					26
College of Engineering	40					40
College of Health	134					134
Community & Technical College	60					60
Consortium Library	27					27
Provost Operations	15					15
VC, Student Affairs	1					1
Community Campuses' Total		39	13	30	7	89

Student Credit Hours Generated by Regular and Term Faculty, Fall 2015

Table 4.04

	050-099	100-299	300-499	500-599	600-699	TOTAL
	Developmental	Lower Division	Upper Division	Professional	Graduate	
Anchorage Campus						
Academic Affairs		285				285
Arts & Sciences	282	33,306	10,097	8	878	44,571
Business & Public Policy		6,323	4,953		762	12,038
Education		485	1,235	129	1,262	3,111
Engineering		2,429	2,852	51	691	6,023
Health		6,493	5,280		1,362	13,135
Community & Technical	1,628	6,600	1,026	35		9,289
University Honors College		138	22			160
Anchorage Campus	1,910	56,059	25,465	223	4,955	88,612
Kenai Peninsula College	135	6,467	449			7,051
Kodiak College	27	1,743	56			1,826
Matanuska-Susitna College	186	4,558	99			4,843
Prince William Sound College	30	509				539
UAA Total	2,288	69,336	26,069	223	4,955	102,871

Student Credit Hours Generated by Adjunct Faculty, Fall 2015

Table 4.05

	050-099	100-299	300-499	500-599	600-699	TOTAL
	Developmental	Lower Division	Upper Division	Professional	Graduate	
Anchorage Campus						
Academic Affairs		549		53		602
Arts & Sciences		14,586	1,334	9	218	16,147
Business & Public Policy		999	216	12	222	1,449
Education		325	478	1,625	201	2,629
Engineering		439	603		66	1,108
Health		3,658	906		280	4,844
Community & Technical	2,114	9,462	441	2	4	12,023
University Honors College		69	54			123
Anchorage Campus	2,114	30,087	4,032	1,701	991	38,925
Kenai Peninsula College	636	5,579	283	182		6,680
Kodiak College	192	1,277	20	13		1,502
Matanuska-Susitna College	621	6,831	199			7,651
Prince William Sound College	3	2,037		81		2,121
UAA Total	3,566	45,811	4,534	1,977	991	56,879

Source: The data regarding student information is extracted from Banner Statewide DSD data system at Fall semester closing freeze and the data for faculty information is from Banner Statewide H Tables at Fall freeze.

Note: Student Credit Hours are based on course level, representing credit courses at the 050 level and above, and do not include auditors.

Number of Course Sections Taught by Regular and Term Faculty, Fall 2015

Table 4.06

	050-099	100-299	300-499	500-599	600-699	TOTAL
	Developmental	Lower Division	Upper Division	Professional	Graduate	
Anchorage Campus						
Academic Affairs		4				4
Arts & Sciences	1	397	246	2	77	723
Business & Public Policy		57	67		21	145
Education		10	21	7	41	79
Engineering		42	60	2	49	153
Health		202	127		47	376
Community & Technical	21	166	27	3		217
University Honors College		4	2			6
Anchorage Campus	22	882	550	14	235	1,703
Kodiak College	1	56	4			61
Kenai Peninsula College	3	144	17			164
Matanuska-Susitna College	4	124	3			131
Prince William Sound College	2	44				46
UAA Total	32	1,250	574	14	235	2,105

Number of Course Sections Taught by Adjunct Faculty, Fall 2015

Table 4.07

	050-099	100-299	300-499	500-599	600-699	TOTAL
	Developmental	Lower Division	Upper Division	Professional	Graduate	
Anchorage Campus						
Academic Affairs		9		3		12
Arts & Sciences		234	33	1	15	283
Business & Public Policy		14	3	2	8	27
Education		7	10	92	10	119
Engineering		10	9		5	24
Health		99	21		12	132
Community & Technical	26	221	12	1	2	262
University Honors College		2	1			3
Anchorage Campus	26	596	89	99	52	862
Kodiak College	5	44	1	2		52
Kenai Peninsula College	10	144	10	7		171
Matanuska-Susitna College	10	159	7			176
Prince William Sound College	2	70		4		76
UAA Total	53	1,013	107	112	52	1,337

Source: The data regarding student information is extracted from Banner Statewide DSD data system at Fall semester closing freeze and the data for faculty information is from Banner Statewide H Tables at Fall freeze.

Note: Number of Course Sections includes credit course sections only, which are courses at the 050 level and above.

Finance, Grants, and Giving

Authorized State Appropriation Budget by Campus Fiscal Years 2012 - 2016

Table 5.01

	FY2012	FY2013	FY2014	FY2015	FY2016	% Change FY12-FY16 FY15-FY16	
	(in Thousands of \$)						
Anchorage Campus	109,916	113,127	116,316	114,591	107,884	-1.8%	-5.9%
Small Business Dev. Center	807	807	1,163	1,103	1,032	27.8%	-6.5%
Kenai Peninsula College	6,969	7,533	8,055	7,749	7,250	4.0%	-6.4%
Kodiak College	2,891	2,927	3,087	2,848	2,717	-6.0%	-4.6%
Matanauska-Susitna College	4,809	4,944	5,140	5,444	5,204	8.2%	-4.4%
Prince William Sound College	3,520	3,634	3,636	3,514	3,298	-6.3%	-6.1%
UAA Total	128,913	132,973	137,397	135,249	127,385	-1.2%	-5.8%

Total Authorized Budget by Campus Fiscal Years 2012 - 2016

Table 5.02

	FY2012	FY2013	FY2014	FY2015	FY2016	% Change FY12-FY16 FY15-FY16	
	(in Thousands of \$)						
Anchorage Campus	258,553	269,638	273,674	274,766	273,622	5.8%	-0.4%
Small Business Dev. Center	2,641	2,916	3,272	3,212	3,178	20.3%	-1.1%
Kenai Peninsula College	12,259	14,058	16,564	16,957	16,898	37.8%	-0.3%
Kodiak College	4,472	4,554	5,030	5,903	6,134	37.1%	3.9%
Matanauska-Susitna College	9,504	10,559	10,905	11,443	11,525	21.3%	0.7%
Prince William Sound College	7,270	7,470	7,553	7,819	7,602	4.6%	-2.8%
UAA Total	294,699	309,195	316,999	320,102	318,959	8.2%	-0.4%

Source: UA Approved Operating and Capital Budgets (Yellowbooks). Compiled by UA Statewide Budget.

Actual State Appropriation Expenditures by Campus Fiscal Years 2011 - 2015

Table 5.03

	FY2011	FY2012	FY2013	FY2014	FY2015	% Change FY11-FY15 FY14-FY15	
	(in Thousands of \$)						
Anchorage Campus	107,161	110,151	113,271	116,413	113,901	6.3%	-2.2%
Small Business Dev. Center	807	807	807	1,139	1,056	30.8%	-7.3%
Kenai Peninsula College	6,990	7,142	7,598	8,123	7,708	10.3%	-5.1%
Kodiak College	2,843	2,958	3,046	3,117	2,856	0.5%	-8.4%
Matanauska-Susitna College	4,746	4,949	4,835	5,204	5,464	15.1%	5.0%
Prince William Sound College	3,400	3,676	3,650	3,715	3,380	-0.6%	-9.0%
UAA Total	125,948	129,683	133,208	137,711	134,365	6.7%	-2.4%

Total Actual Expenditures by Campus Fiscal Years 2011 - 2015

Table 5.04

	FY2011	FY2012	FY2013	FY2014	FY2015	% Change FY11-FY15 FY14-FY15	
	(in Thousands of \$)						
Anchorage Campus	250,184	255,845	265,519	262,336	266,438	6.5%	1.6%
Small Business Dev. Center	2,632	2,382	2,132	2,527	2,420	-8.1%	-4.2%
Kenai Peninsula College	13,714	14,740	15,612	15,441	15,727	14.7%	1.9%
Kodiak College	4,060	4,917	5,159	5,295	5,380	32.5%	1.6%
Matanauska-Susitna College	9,485	10,064	10,002	10,184	10,752	13.4%	5.6%
Prince William Sound College	6,560	6,468	5,874	6,378	5,798	-11.6%	-9.1%
UAA Total	286,634	294,416	304,297	302,160	306,516	6.9%	1.4%

Source: UA Approved Operating and Capital Budgets (Yellowbooks). Compiled by UA Statewide Budget.

Summary of UAA Revenue Received Fiscal Years 2012 - 2016

Table 5.05

											% Change	
Revenue	FY12	% Total	FY13	% Total	FY14	% Total	FY15	% Total	FY16	% Total	FY12-FY16	FY15-Y16
Unrestricted:												
General Funds	130,941.9	44%	134,561.6	44%	139,387.0	46%	137,962.2	45%	131,897.6	43%	1%	-4%
Net Tuition/Fees	70,590.0	24%	72,372.2	24%	72,414.6	24%	72,728.0	24%	76,661.7	25%	9%	5%
UA Intra-Agency Rcpt	9,248.7	3%	11,369.9	4%	10,092.8	3%	9,219.5	3%	9,772.2	3%	6%	6%
UA Receipts	7,182.6	2%	8,269.3	3%	8,496.3	3%	8,616.2	3%	9,206.4	3%	28%	7%
Indirect Cost Recov	3,461.2	1%	3,455.0	1%	3,203.0	1%	3,408.9	1%	4,375.5	1%	26%	28%
Interest Income	-1.2	0%	-0.9	0%							-100%	
CIP Receipts	2,200.7	1%	2,181.1	1%	1,878.2	1%	832.1	0%	439.0	0%	-80%	-47%
Unrestricted Total	223,623.9	76%	232,208.2	76%	235,471.9	78%	232,766.9	75%	232,352.4	76%	14%	-1%
Restricted:												
Federal Receipts	31,771.5	11%	32,195.1	11%	29,434.7	10%	29,506.5	10%	29,486.8	10%	-7%	0%
UA Intra-Agency Rcpt	8.3	0%									-100%	
State Intra-Agency Rcpt	6,751.0	2%	6,411.9	2%	6,222.5	2%	8,451.3	3%	7,247.2	2%	7%	-14%
Interest Income	0.5	0%	0.6	0%	0.6	0%	0.5	0%	0.7	0%	40%	40%
CIP Receipts	164.0	0%	1.9	0%							-100%	
UA Receipts	8,446.4	3%	9,396.2	3%	9,027.2	3%	9,459.7	3%	10,438.9	3%	24%	10%
Restricted Total	47,141.7	16%	48,005.7	16%	44,685.0	15%	47,418.0	15%	47,173.6	15%	17%	6%
Auxiliary:												
Dorm, Food	23,066.5	8%	22,864.7	7%	21,503.8	7%	25,129.1	8%	25,751.3	8%	12%	2%
Interest Income	24.0	0%	28.7	0%	26.9	0%	22.3	0%			-100%	-100%
UA Receipts	27.9	0%	728.5	0%	29.6	0%	876.1	0%	135.5	0%	386%	-85%
Intra-Agency Receipts	15.5	0%	9.9	0%	16.7	0%	604.4	0%	-402.6	0%	-2,697%	-167%
Auxiliary Total	23,133.9	8%	23,631.8	8%	21,577.0	7%	26,631.9	9%	25,484.2	8%	14%	18%
Designated Total	2,070.8	1%	2,073.5	1%	1,986.9	1%	2,002.0	1%	2,113.4	1%	1%	6%
UAA TOTAL	295,970.3	100%	305,919.2	100%	303,720.8	100%	308,818.8	100%	307,123.6	100%	4%	-1%

Source: University of Alaska 'S' reports for UAA appropriation.

Notes:

1. Auxiliary enterprises include Anchorage Campus Bookstore, Housing, Dining Services, Health Center, Parking, Kenai Bookstore, Kodiak Bookstore, Matanuska-Susitna Bookstore, and Prince William Sound College Bookstore and Housing.
2. Real % change reflects a 9.5% cumulative inflationary adjustment from FY96 to FY98 based upon the Higher Education Price Index (HEPI).
3. Unrestricted UA Receipts includes negative offset for FY15 Unreserved Fund Balance \$20.1M.
4. Dollar amounts in thousands.

Summary of UAA Expenditures by NCHEMS Fiscal Years 2012 - 2016

Table 5.06

Revenue	FY12	% Total	FY13	% Total	FY14	% Total	FY15	% Total	FY16	% Total	% Change	
											FY12-FY16	FY15-Y16
Unrestricted:												
Instruction	102,094.0	34.7%	105,397.9	34.6%	105,881.2	35.0%	103,735.5	33.8%	102,765.3	34.2%	0.7%	-0.9%
Research	5,795.9	2.0%	5,916.6	1.9%	4,795.3	1.6%	4,473.4	1.5%	4,559.3	1.5%	-21.3%	1.9%
Public Service	4,671.5	1.6%	5,037.1	1.7%	6,026.7	2.0%	5,928.2	1.9%	5,843.8	1.9%	25.1%	-1.4%
Academic Support	19,643.2	6.7%	20,015.7	6.6%	19,798.9	6.6%	18,754.4	6.1%	18,279.2	6.1%	-6.9%	-2.5%
Library	6,996.7	2.4%	7,514.3	2.5%	7,762.5	2.6%	7,184.7	2.3%	7,560.4	2.5%	8.1%	5.2%
Student Services	19,287.6	6.6%	20,084.1	6.6%	19,533.7	6.5%	19,124.5	6.2%	17,370.5	5.8%	-9.9%	-9.2%
Athletics	7,777.2	2.6%	7,624.1	2.5%	8,891.4	2.9%	7,249.1	2.4%	9,148.5	3.0%	17.6%	26.2%
Institutional Support	28,565.0	9.7%	31,318.2	10.3%	32,433.8	10.7%	29,779.3	9.7%	30,383.6	10.1%	6.4%	2.0%
Physical Plant	30,899.6	10.5%	30,637.2	10.1%	30,506.8	10.1%	35,029.9	11.4%	31,951.4	10.6%	3.4%	-8.8%
Scholarships	(2,929.1)	-1.0%	(3,128.9)	-1.0%	(3,114.2)	-1.0%	(3,165.6)	-1.0%	(1,857.8)	-0.6%	-36.6%	-41.3%
Debt Service	0.0	0.0%	0.0	0.0%	0.1	0.0%	0.0	0.0%	0.0	0.0%		
Unrestricted Total	222,801.6	75.7%	230,416.3	75.7%	232,516.2	77.0%	228,093.4	74.4%	226,004.2	75.2%	1.4%	-0.9%
Restricted:												
Instruction	7,069.8	2.4%	7,798.6	2.6%	7,772.2	2.6%	6,376.3	2.1%	6,484.5	2.2%	-8.3%	1.7%
Research	9,934.8	3.4%	10,308.6	3.4%	8,919.4	3.0%	9,757.9	3.2%	11,186.6	3.7%	12.6%	14.6%
Public Service	8,204.1	2.8%	8,029.7	2.6%	7,634.4	2.5%	10,998.8	3.6%	10,805.5	3.6%	31.7%	-1.8%
Academic Support	1,230.9	0.4%	1,183.4	0.4%	1,202.5	0.4%	1,165.2	0.4%	957.9	0.3%	-22.2%	-17.8%
Library	49.6	0.0%	37.7	0.0%	50.6	0.0%	44.6	0.0%	34.0	0.0%	-31.5%	-23.8%
Student Services	1,960.8	0.7%	2,389.5	0.8%	1,388.8	0.5%	1,107.3	0.4%	1,415.5	0.5%	-27.8%	27.8%
Athletics	10.8	0.0%	15.9	0.0%	4.8	0.0%	32.7	0.0%	42.2	0.0%	290.7%	29.1%
Institutional Support	64.8	0.0%	120.4	0.0%	79.0	0.0%	131.7	0.0%	100.5	0.0%	55.1%	-23.7%
Physical Plant	354.4	0.1%	5.0	0.0%	(155.5)	-0.1%	372.3	0.1%	167.2	0.1%	-52.8%	-55.1%
Scholarships	18,229.9	6.2%	18,200.0	6.0%	17,761.5	5.9%	17,682.6	5.8%	15,975.1	5.3%	-12.4%	-9.7%
Auxiliary		0.0%		0.0%		0.0%	(94.0)	0.0%		0.0%		
Restricted Total	47,109.9	16.0%	48,088.8	15.8%	44,657.7	14.8%	47,575.4	15.5%	47,169.0	15.7%	0.1%	-0.9%
Auxiliary Total	22,422.9	7.6%	23,906.8	7.9%	22,999.1	7.6%	28,844.9	9.4%	25,432.2	8.5%	13.4%	-11.8%
Designated Total	2,070.8	0.7%	2,073.5	0.7%	1,986.9	0.7%	2,002.0	0.7%	2,113.4	0.7%	2.1%	5.6%
UAA TOTAL	294,405.2	100.0%	304,485.4	100.0%	302,159.9	100.0%	306,515.7	100.0%	300,718.8	100.0%	2.1%	-1.9%

NCHEMS = National Center for Higher Education Management Statistics

Source: University of Alaska 'S' reports.

Note: Dollar amounts in thousands.

Authorized UAA Expenditure Budget (Unrestricted)
Instruction Component Only, Fiscal Years 2012 - 2016

Table 5.07

	(in Thousands of \$)					% Change	
	FY2012	FY2013	FY2014	FY2015	FY2016	FY12-FY16	FY15-FY16
Anchorage Campus							
College of Arts & Sciences	29,237.4	29,327.1	30,254.5	29,620.8	29,093.4	-0.5%	-1.8%
College of Bus & Public Policy	8,865.3	9,354.6	10,201.1	10,082.9	9,985.4	12.6%	-1.0%
College of Education	4,482.5	4,094.0	4,338.6	4,298.6	4,403.9	-1.8%	2.4%
College of Engineering	6,082.0	7,144.0	7,695.2	7,358.7	7,022.8	15.5%	-4.6%
College of Health	16,876.0	18,770.0	19,078.8	18,751.1	20,664.4	22.4%	10.2%
Community & Technical College	17,449.5	16,457.7	16,193.2	16,451.7	15,128.6	-13.3%	-8.0%
Provost Operations	736.8	1,230.1	1,774.1	1,870.9	1,808.3	145.4%	-3.3%
Anchorage Campus Total	83,729.5	86,377.5	89,535.5	88,434.7	88,106.8	5.2%	-0.4%
Kenai Peninsula College	7,375.0	7,455.5	8,692.5	7,773.4	10,239.3	38.8%	31.7%
Kodiak College	1,762.9	1,888.3	2,225.3	2,572.6	3,493.8	98.2%	35.8%
Matanuska-Susitna College	4,286.4	4,190.2	4,891.8	4,610.1	6,521.6	52.1%	41.5%
Prince William Sound College	2,241.9	1,957.0	1,435.8	1,736.5	3,098.3	38.2%	78.4%
UAA Total	99,395.7	101,868.5	106,780.9	105,127.3	111,459.8	12.1%	6.0%

Source: UAA Budget Office

Note:

Includes Academic Units only and does not include central administration or information technology services units.

UAA Tuition Rate History Fiscal Years 2013 - 2017

Table 5.08

	(in \$/credit)					% Change	
	FY2013	FY2014	FY2015	FY2016	FY2017	FY13-FY17	FY16-FY17
Anchorage Campus*							
Resident							
Undergraduate							
Lower Division	165	168	174	183	192	16.4%	4.9%
Upper Division	200	204	210	221	232	16.0%	5.0%
Graduate	383	391	403	423	444	15.9%	5.0%
Non-Resident							
Undergraduate							
Lower Division	580	600	618	649	681	17.4%	4.9%
Upper Division	615	636	654	687	721	17.2%	4.9%
Surcharge	415	432	444	466	489	17.8%	4.9%
Graduate	783	799	823	864	907	15.8%	5.0%
Surcharge	400	408	420	441	463	15.8%	5.0%
Kodiak College							
Resident							
Undergraduate							
Lower Division	144	147	152	161	169	17.4%	5.0%
Prince William Sound Community College							
Resident							
Undergraduate							
Lower Division	142	145	153	160	168	18.3%	5.0%

Source: Institutions' websites

* Anchorage Campus, Kenai Peninsula College, and Matanuska-Susitna College share the same tuition rates.

Research Grant Awards by UAA Units and Fund Agencies Fiscal Year 2016

Table 5.09

	Academic Support		Institutional Support		Instruction		Public Service		Research		Scholarship/Fellowship		Student Services		TOTAL	
	N	\$	N	\$	N	\$	N	\$	N	\$	N	\$	N	\$	N	\$
College of Arts & Sciences																
Federal Agencies							1	20,000	34	4,079,573					35	4,099,573
Local Government					1	43,104									1	43,104
Private Funding Sources	4	302,091	3	133,920	2	149,720	5	106,609	16	1,000,527	1	6,200			31	1,699,067
Alaska State Agencies							1	10,500	11	1,285,519					12	1,296,019
Total	4	302,091	3	133,920	3	192,824	7	137,109	61	6,365,619	1	6,200			79	7,137,763
College of Business & Public Policy																
Federal Agencies					1	314,660	1	275,000	2	54,500					4	644,160
Local Government									2	65,000					2	65,000
Private Funding Sources	3	451,501			5	383,478	3	484,714	18	1,385,787	1	440,047			30	3,145,527
Alaska State Agencies							4	120,112	12	859,854					16	979,966
Total	3	451,501			6	698,138	8	879,826	34	2,365,141	1	440,047			52	4,834,653
College of Education																
Federal Agencies					1	393,968									1	393,968
Private Funding Sources							1	15,000					1	10,000	2	25,000
Alaska State Agencies					1	84,366									1	84,366
Total					2	478,334	1	15,000					1	10,000	4	503,334
College of Engineering																
Federal Agencies							1	15,000	2	248,691					3	263,691
Local Government									1	89,000					1	89,000
Private Funding Sources			3	105,640	1	877,404	1	99	9	1,826,704					14	2,809,847
Alaska State Agencies									3	1,045,423					3	1,045,423
Total			3	105,640	1	877,404	2	15,099	15	3,209,818					21	4,207,961
College of Health																
Federal Agencies					3	1,274,704	3	1,000,661	4	408,387					10	2,683,752
Private Funding Sources	2	82,500	5	70,650	6	981,540	9	408,701	8	244,331					30	1,787,722
Alaska State Agencies	1	30,000			3	55,635	33	4,225,616	4	123,188	1	2,600			42	4,437,039
Total	3	112,500	5	70,650	12	2,311,879	45	5,634,978	16	775,906	1	2,600			82	8,908,513

Research Grant Awards by UAA Units and Fund Agencies Fiscal Year 2016

Table 5.09

		Academic Support		Institutional Support		Instruction		Public Service		Research		Scholarship/Fellowship		Student Services		TOTAL	
		N	\$	N	\$	N	\$	N	\$	N	\$	N	\$	N	\$	N	\$
Community & Technical College																	
Private Funding Sources				2	24,794	1	88,400	3	154,000							6	267,194
Alaska State Agencies						2	133,502									2	133,502
Total				2	24,794	3	221,902	3	154,000							8	400,696
Consortium Library																	
Federal Agencies								2	1,046,663							2	1,046,663
Private Funding Sources				2	100,801			2	71,746							4	172,547
Alaska State Agencies								1	107,882							1	107,882
Total				2	100,801			5	1,226,291							7	1,327,092
Athletics/Sport Center																	
Private Funding Sources	1	46,905														1	46,905
Provost Operations																	
Federal Agencies	1	450,000						9	1,383,000	6	2,482,613	2	150,000			18	4,465,613
Local Government	1	160,000						11	920,300							12	1,080,300
Private Funding Sources	1	60,000	1	20,691	4	2,126,400	9	630,440	1	56,400	2	307,000				18	3,200,931
Alaska State Agencies						1	385,200	2	57,351			1	1,000,000			4	1,442,551
Total	3	670,000	1	20,691	5	2,511,600	31	2,991,091	7	2,539,013	5	1,457,000				52	10,189,395
Senior Vice Provost																	
Private Funding Sources	1	6,000						2	6,683	1	2,000					4	14,683
Student Affairs																	
Federal Agencies														2	573,186	2	573,186
Private Funding Sources								1	1,250					1	5,000	2	6,250
Alaska State Agencies								1	51,445							1	51,445
Total								2	52,695					3	578,186	5	630,881
University Advancement																	
Private Funding Sources				1	30,000											1	30,000

Research Grant Awards by UAA Units and Fund Agencies Fiscal Year 2016

Table 5.09

	Academic Support		Institutional Support		Instruction		Public Service		Research		Scholarship/ Fellowship		Student Services		TOTAL	
	N	\$	N	\$	N	\$	N	\$	N	\$	N	\$	N	\$	N	\$
Kenai Peninsula College																
Federal Agencies					1	62,755			1	174,336					2	237,091
Local Government					1	726,987									1	726,987
Private Funding Sources	1	1,380	1	10,000	1	10,927	2	24,784							5	47,092
Alaska State Agencies					1	192,507	1	4,750							2	197,257
Total	1	1,380	1	10,000	4	993,176	3	29,534	1	174,336					10	1,208,427
Kodiak College																
Federal Agencies	1	399,877													1	399,877
Private Funding Sources			1	9,614											1	9,614
Alaska State Agencies					2	296,902									2	296,902
Total	1	399,877	1	9,614	2	296,902									4	706,393
Matanuska-Susitna College																
Private Funding Sources													2	200,333	2	200,333
Alaska State Agencies					1	59,051									1	59,051
Total					1	59,051							2	200,333	3	259,384
Prince William Sound College																
Federal Agencies													1	17,000	1	17,000
Private Funding Sources	1	14,850	1	9,900	2	84,380	1	36,625							5	145,755
Alaska State Agencies			1	1,416	1	80,685	1	1,800							3	83,901
Total	1	14,850	2	11,316	3	165,065	2	38,425					1	17,000	9	246,656
UAA Total																
Federal Agencies	2	849,877			6	2,046,087	17	3,740,324	49	7,448,100	2	150,000	3	590,186	79	14,824,574
Local Government	1	160,000			2	770,091	11	920,300	3	154,000					17	2,004,391
Private Funding Sources	14	965,227	20	516,010	22	4,702,249	39	1,940,652	53	4,515,749	4	753,247	4	215,333	156	13,608,467
Alaska State Agencies	1	30,000	1	1,416	12	1,287,848	44	4,579,456	30	3,313,984	2	1,002,600			90	10,215,305
Total	18	2,005,104	21	517,426	42	8,806,275	111	11,180,732	135	15,431,833	8	1,905,847	7	805,519	342	40,652,736

Source: UAA Research and Graduate Studies Office, compiled by UAA IR.

Notes: Awards under Provost Operations include awards of Alaska Native Science and Engineering Program and the Business Enterprise Institute which report directly to Provost.

1. N = number of proposals awarded

2. \$ = amount awarded

Research Grant Awards by UAA Units and Research Types

Fiscal Years 2012 - 2016

Table 5.10

	FY2012		FY2013		FY2014		FY2015		FY2016	
	N	\$	N	\$	N	\$	N	\$	N	\$
College of Arts & Sciences										
Academic Support	3	26,691	4	122,858	4	140,700	5	114,691	4	302,091
Institutional Support									3	133,920
Instruction	13	891,007	9	741,173	6	597,212	13	639,444	3	192,824
Public Service	9	461,670	9	754,889	11	935,295	14	730,948	7	137,109
Research	58	8,853,491	54	6,276,000	56	5,799,679	49	3,191,237	61	6,365,619
Scholarship/Fellowship	1	1,440	2	24,940	1	11,100	1	5,100	1	6,200
Student Services			1	25,000						
Total	84	10,234,299	79	7,944,861	78	7,483,986	82	4,681,420	79	7,137,763
College of Business & Public Policy										
Academic Support	2	205,124	2	241,578	3	293,260	3	439,290	3	451,501
Instruction	3	219,831	4	386,240	4	109,610	4	673,560	6	698,138
Public Service	21	1,542,534	18	2,500,391	1	3,500	1	998	8	879,826
Research	42	2,338,400	31	2,149,253	33	2,279,628	30	1,341,649	34	2,365,141
Scholarship/Fellowship							1	1,000	1	440,047
Total	68	4,305,890	55	5,277,462	41	2,685,998	39	2,456,497	52	4,834,653
College of Education										
Academic Support	2	108,500								
Instruction	4	386,069	3	92,719	4	434,761	4	475,975	2	478,334
Public Service	1	12,000	1	12,000			1	2,040	1	15,000
Scholarship/Fellowship	2	117,000	1	138,000	1	110,000				
Student Services									1	10,000
Total	9	623,569	5	242,719	5	544,761	5	478,015	4	503,334
College of Engineering										
Academic Support	1	111,450	1	123,387	2	26,895	2	5,205		
Institutional Support									3	105,640
Instruction	2	7,535	2	1,136,495	3	694,140	3	1,804,864	1	877,404
Public Service					2	94,050	3	175,349	2	15,099
Research	9	770,663	15	923,785	16	806,512	16	1,771,974	15	3,209,818
Student Services			2	12,572			2	12,791		
Total	12	889,648	20	2,196,239	23	1,621,597	26	3,770,183	21	4,207,961
College of Health										
Academic Support	1	99,000	3	28,430	3	84,990	2	82,170	3	112,500
Institutional Support	4	98,310	5	78,515	3	59,852	3	45,625	5	70,650
Instruction	10	2,726,914	7	1,819,912	11	2,712,309	10	1,718,300	12	2,311,879
Public Service	25	4,311,085	21	4,022,578	27	4,044,714	38	4,508,824	45	5,634,978
Research	25	2,888,243	21	1,593,508	27	2,124,284	18	1,994,451	16	775,906
Scholarship/Fellowship	1	17,471	2	257,813	2	337,745	4	820,237	1	2,600
Student Services	1	386,417			1	7,628	1	3,798		
Total	67	10,527,440	59	7,800,756	74	9,371,521	76	9,173,405	82	8,908,513
Community & Technical College										
Academic Support	2	23,846			2	12,997	1	4,984		
Institutional Support							1	30,200	2	24,794
Instruction	9	2,988,423	5	1,314,745	5	618,449	9	355,691	3	221,902
Public Service	2	107,315	2	106,842	2	26,841	2	73,842	3	154,000
Total	13	3,119,584	7	1,421,587	9	658,287	13	464,717	8	400,696

Research Grant Awards by UAA Units and Research Types

Fiscal Years 2012 - 2016

Table 5.10

	FY2012		FY2013		FY2014		FY2015		FY2016	
	N	\$	N	\$	N	\$	N	\$	N	\$
Consortium Library										
Academic Support	2	23,145	2	41,394						
Institutional Support	3	103,374	2	113,660	3	353,040	3	101,034	2	100,801
Public Service	7	1,209,094	6	472,656	11	1,840,906	9	1,570,141	5	1,226,291
Total	12	1,335,613	10	627,710	14	2,193,947	12	1,671,175	7	1,327,092
Athletics/Sport Center										
Academic Support					1	4,000	1	38,380	1	46,905
Public Service							1	4,800		
Total					1	4,000	2	43,180	1	46,905
Chancellor Operations										
Academic Support					1	1,250				
Facilities & Campus Services										
Institutional Support					1	990,000				
Public Service			1	4,992						
Total			1	4,992	1	990,000				
Provost Operations										
Academic Support	5	279,301	2	120,426	3	59,473	3	62,372	3	670,000
Institutional Support					2	126,510			1	20,691
Instruction	12	2,321,102	9	2,140,025	10	1,626,454	9	1,953,097	5	2,511,600
Public Service	5	169,600	3	134,336	23	2,339,364	25	5,132,238	31	2,991,091
Research	4	50,301	4	29,500	2	50,141	9	3,819,394	7	2,539,013
Scholarship/Fellowship	6	440,400	6	1,117,989	6	1,187,329	8	1,214,612	5	1,457,000
Student Services	3	312,813	3	224,070	1	21,346	1	9,874		
Total	35	3,573,517	27	3,766,346	47	5,410,618	55	12,191,586	52	10,189,395
Senior Vice Provost										
Academic Support					1	5,140	1	6,650	1	6,000
Public Service			2	2,000	3	24,218			2	6,683
Research	1	4,936	1	2,500	1	5,000	1	7,500	1	2,000
Student Services			1	6,000						
Total	1	4,936	4	10,500	5	34,358	2	14,150	4	14,683
Student Affairs										
Academic Support					1	3,000				
Public Service							1	22,000	2	52,695
Student Services	4	1,175,436	5	793,465	4	836,758	4	938,136	3	578,186
Total	4	1,175,436	5	793,465	5	839,758	5	960,136	5	630,881
University Advancement										
Institutional Support			3	95,000	2	39,800	1	57,000	1	30,000

Research Grant Awards by UAA Units and Research Types

Fiscal Years 2012 - 2016

Table 5.10

	FY2012		FY2013		FY2014		FY2015		FY2016	
	N	\$	N	\$	N	\$	N	\$	N	\$
Kenai Peninsula College										
Academic Support	1	6,000					1	11,000	1	1,380
Institutional Support	1	20,000			1	20,000			1	10,000
Instruction	7	1,616,214	6	1,385,928	6	1,051,690	7	1,005,409	4	993,176
Public Service	4	28,725	3	31,117	3	26,474	3	30,735	3	29,534
Research	1	165,000	2	278,641			1	60,992	1	174,336
Total	14	1,835,939	11	1,695,686	10	1,098,164	12	1,108,136	10	1,208,427
Kodiak College										
Academic Support	2	799,721	2	810,276	2	1,214,588	2	411,593	1	399,877
Institutional Support							2	21,140	1	9,614
Instruction	1	103,452	2	164,381	2	575,948	2	113,571	2	296,902
Public Service	1	1,800								
Total	4	904,973	4	974,657	4	1,790,536	6	546,304	4	706,393
Matanuska-Susitna College										
Institutional Support							1	5,000		
Instruction	1	100,000	2	115,150	1	703	5	223,352	1	59,051
Student Services							1	14,960	2	200,333
Total	1	100,000	2	115,150	1	703	7	243,312	3	259,384
Prince William Sound College										
Academic Support									1	14,850
Institutional Support	2	23,242	1	1,000					2	11,316
Instruction	2	159,082	2	169,391	2	105,126	1	85,626	3	165,065
Public Service	1	6,000			2	12,637	3	16,236	2	38,425
Student Services									1	17,000
Total	5	188,324	3	170,391	4	117,763	4	101,862	9	246,656
UAA Total										
Academic Support	21	1,682,778	16	1,488,349	23	1,846,293	21	1,176,335	18	2,005,104
Institutional Support	10	244,926	11	288,175	12	1,589,202	11	259,998	21	517,426
Instruction	64	11,519,630	51	9,466,159	54	8,526,403	67	9,048,889	42	8,806,275
Public Service	76	7,849,823	66	8,041,801	85	9,347,999	101	12,268,151	111	11,180,732
Research	140	15,071,034	128	11,253,187	135	11,065,244	124	12,187,197	135	15,431,833
Scholarship/Fellowship	10	576,311	11	1,538,742	10	1,646,174	14	2,040,949	8	1,905,847
Student Services	8	1,874,666	12	1,061,107	6	865,732	9	979,558	7	805,519
Total	329	38,819,168	295	33,137,520	325	34,887,047	347	37,961,076	342	40,652,736

Source: UAA Research and Graduate Studies Office, compiled by UAA IR.

Notes:

1. N = number of proposals awarded
2. \$ = amount awarded

Research Grant Proposal Submissions by UAA Units and Fund Agencies

Fiscal Year 2016

Table 5.11

	Academic Support		Institutional Support		Instruction		Public Service		Research		Scholarship/ Fellowship		Student Services		TOTAL	
	N	\$	N	\$	N	\$	N	\$	N	\$	N	\$	N	\$	N	\$
College of Arts & Sciences																
Federal Agencies							4	291,531	59	19,023,837					63	19,315,368
Private Funding Sources	2	274,636	4	134,910	2	73,605	3	970,225	20	2,741,508	1	17,540			32	4,212,424
Alaska State Agencies									19	2,292,154					19	2,292,154
Total	2	274,636	4	134,910	2	73,605	7	1,261,756	98	24,057,499	1	17,540			114	25,819,946
College of Business & Public Policy																
Federal Agencies							1	302,400	15	6,079,806					16	6,382,206
Private Funding Sources	1	20,000					2	16,744	25	3,285,667					28	3,322,411
Alaska State Agencies							2	83,545	13	631,590					15	715,135
Total	1	20,000					5	402,689	53	9,997,063					59	10,419,752
College of Education																
Federal Agencies					2	3,343,040							1	2,722,591	3	6,065,631
Private Funding Sources							3	45,000					1	10,000	4	55,000
Alaska State Agencies					1	74,361									1	74,361
Total					3	3,417,401	3	45,000					2	2,732,591	8	6,194,992
College of Engineering																
Federal Agencies									4	895,352					4	895,352
Local Government									1	88,712					1	88,712
Private Funding Sources			3	105,640					16	3,721,403					19	3,827,043
Alaska State Agencies									10	2,415,984			1	42,000	11	2,457,984
Total			3	105,640					31	7,121,451			1	42,000	35	7,269,091
College of Health																
Federal Agencies					3	5,281,101	1	110,000	12	8,621,861					16	14,012,962
Local Government									1	144,643					1	144,643
Private Funding Sources			1	10,000	1	64,496	8	195,279	16	1,080,855					26	1,350,630
Alaska State Agencies	1	30,000			2	25,635	34	3,680,500	4	254,741	1	2,600			42	3,993,476
Total	1	30,000	1	10,000	6	5,371,232	43	3,985,779	33	10,102,100	1	2,600			85	19,501,711

Research Grant Proposal Submissions by UAA Units and Fund Agencies

Fiscal Year 2016

Table 5.11

	Academic Support		Institutional Support		Instruction		Public Service		Research		Scholarship/ Fellowship		Student Services		TOTAL	
	N	\$	N	\$	N	\$	N	\$	N	\$	N	\$	N	\$	N	\$
Community & Technical College																
Private Funding Sources			1	2,744	1	112,040	2	88,999							4	203,783
Alaska State Agencies					3	151,402									3	151,402
Total			1	2,744	4	263,442	2	88,999							7	355,185
Consortium Library																
Private Funding Sources							2	331,114							2	331,114
Alaska State Agencies							1	107,882							1	107,882
Total							3	438,996							3	438,996
Provost Operations																
Federal Agencies					1	28,000	14	2,201,115	10	4,313,081	4	1,000,000			29	7,542,196
Local Government							11	1,014,200							11	1,014,200
Private Funding Sources	1	60,000	1	20,691	3	1,927,000	4	57,397			2	60,000			11	2,125,088
Alaska State Agencies					1	385,200	5	1,149,452							6	1,534,652
Total	1	60,000	1	20,691	5	2,340,200	34	4,422,164	11	4,369,481	6	1,060,000			58	12,272,536
Senior Vice Provost																
Private Funding Sources							1	1,980							1	1,980
Student Affairs																
Federal Agencies													3	4,306,533	3	4,306,533
University Police																
Private Funding Sources			1	15,000											1	15,000
Kenai Peninsula College																
Federal Agencies					1	62,755									1	62,755
Local Government					1	726,987									1	726,987
Private Funding Sources			1	10,000			1	2,000							2	12,000
Alaska State Agencies					1	167,506	2	12,000							3	179,506
Total			1	10,000	3	957,248	3	14,000							7	981,248

Research Grant Proposal Submissions by UAA Units and Fund Agencies Fiscal Year 2016

Table 5.11

	Academic Support		Institutional Support		Instruction		Public Service		Research		Scholarship/ Fellowship		Student Services		TOTAL	
	N	\$	N	\$	N	\$	N	\$	N	\$	N	\$	N	\$	N	\$
Kodiak College																
Federal Agencies					1	98,948									1	98,948
Private Funding Sources			1	9,614											1	9,614
Alaska State Agencies					1	192,339									1	192,339
Total			1	9,614	2	291,287									3	300,901
Matanuska-Susitna College																
Private Funding Sources													2	196,972	2	196,972
Prince William Sound College																
Federal Agencies													1	17,000	1	17,000
Private Funding Sources	2	19,775	2	10,570	1	9,484	1	36,625							6	76,454
Alaska State Agencies			2	60,947	1	80,685	2	12,600							5	154,232
Total	2	19,775	4	71,517	2	90,169	3	49,225					1	17,000	12	247,686
UAA Total																
Federal Agencies					8	8,813,844	20	2,905,046	100	38,933,937	4	1,000,000	5	7,046,124	137	58,698,951
Local Government					1	726,987	11	1,014,200	2	233,355					14	1,974,542
Alaska State Agencies	1	30,000	2	60,947	10	1,077,128	46	5,045,979	46	5,594,469	1	2,600	1	42,000	107	11,853,123
Private Funding Sources	6	374,411	15	319,169	8	2,186,625	27	1,745,363	78	10,885,833	3	77,540	3	206,972	140	15,795,913
Total	7	404,411	17	380,116	27	12,804,584	104	10,710,588	226	55,647,594	8	1,080,140	9	7,295,096	398	88,322,529

Source: UAA Research and Graduate Studies Office, compiled by UAA IR.

Notes:

1. N = number of proposals submitted
2. \$ = amount requested of the proposals
3. Proposals with a status of "Withdrawn" have been excluded.

Research Grant Proposal Submissions by UAA Units and Research Types

Fiscal Years 2012 - 2016

Table 5.12

		FY2012		FY2013		FY2014		FY2015		FY2016	
		N	\$	N	\$	N	\$	N	\$	N	\$
College of Arts & Sciences											
Academic Support	1	500,000				1	2,500	2	386,525	2	274,636
Institutional Support	1	990,000								4	134,910
Instruction	6	446,364		7	519,820	9	372,181	9	167,870	2	73,605
Public Service	12	1,385,824		9	1,440,761	14	1,979,418	16	1,244,776	7	1,261,756
Research	82	28,856,266		85	29,489,587	109	35,835,342	139	34,261,565	98	24,057,499
Scholarship/Fellowship	1	126,000				1	7,500			1	17,540
Student Services	1	25,000									
Total	104	32,329,454		101	31,450,168	134	38,196,941	166	36,060,736	114	25,819,946
College of Business & Public Policy											
Academic Support										1	20,000
Instruction				2	131,020	3	33,125				
Public Service	25	4,363,764		23	2,840,018	1	4,900	2	57,664	5	402,689
Research	47	3,595,466		35	3,908,158	34	2,151,542	42	3,495,532	53	9,997,063
Scholarship/Fellowship						1	25,000	1	4,950		
Total	72	7,959,230		60	6,879,196	39	2,214,567	45	3,558,146	59	10,419,752
College of Education											
Instruction	5	1,410,188		5	831,809	3	1,340,603	3	129,577	3	3,417,401
Public Service	1	12,000		1	12,000			1	2,040	3	45,000
Scholarship/Fellowship	2	117,000		1	138,000	1	110,000				
Student Services										2	2,732,591
Total	8	1,539,188		7	981,809	4	1,450,603	4	131,617	8	6,194,992
College of Engineering											
Academic Support				1	117,897			1	800		
Institutional Support										3	105,640
Instruction	4	16,400				2	54,802	2	21,485		
Public Service						2	94,050	1	14,710		
Research	22	4,384,112		29	4,747,494	29	3,092,339	19	2,878,315	31	7,121,451
Student Services				2	12,572			2	5,455	1	42,000
Total	26	4,400,512		32	4,877,963	33	3,241,191	25	2,920,765	35	7,269,091
College of Health											
Academic Support				2	26,500	1	32,670			1	30,000
Institutional Support	3	89,998		1	8,000	1	53,920	1	5,000	1	10,000
Instruction	8	3,973,966		6	1,915,657	6	2,148,275	5	1,767,218	6	5,371,232
Public Service	33	7,305,677		19	4,651,041	40	5,034,581	45	7,974,894	43	3,985,779
Research	41	10,353,146		23	5,252,205	38	7,630,298	35	7,025,056	33	10,102,100
Scholarship/Fellowship	1	603,632		1	2,000	2	1,868,945	2	461,274	1	2,600
Total	86	22,326,419		52	11,855,403	88	16,768,689	88	17,233,442	85	19,501,711
Community & Technical College											
Academic Support	2	23,846						1	4,984		
Institutional Support								1	11,700	1	2,744
Instruction	10	1,563,948		6	538,548	4	287,218	6	193,633	4	263,442
Public Service	4	134,156		2	106,664	1	7,280			2	88,999
Research	1	20,000				1	2,979				
Student Services								1	4,950		
Total	17	1,741,950		8	645,212	6	297,477	9	215,267	7	355,185

Research Grant Proposal Submissions by UAA Units and Research Types

Fiscal Years 2012 - 2016

Table 5.12

	FY2012		FY2013		FY2014		FY2015		FY2016	
	N	\$	N	\$	N	\$	N	\$	N	\$
Consortium Library										
Academic Support	2	62,500	3	4,141,394						
Public Service	7	1,133,691	8	761,395	6	4,579,587	7	322,289	3	438,996
Total	9	1,196,191	11	4,902,789	6	4,579,587	7	322,289	3	438,996
Athletics/Sport Center										
Public Service							1	4,800		
Facilities & Campus Svcs										
Institutional Support	1	275,000								
Public Service			1	10,000						
Total	1	275,000	1	10,000						
Provost Operations										
Academic Support	5	623,160	1	50,000	3	48,703	3	2,285,627	1	60,000
Institutional Support					1	120,148			1	20,691
Instruction	8	3,687,739	4	268,150	5	5,364,211	9	836,749	5	2,340,200
Public Service	4	108,600	8	297,665	23	2,483,338	32	10,987,933	34	4,422,164
Research	7	7,697,661	2	24,496	4	102,715	7	1,575,064	11	4,369,481
Scholarship/Fellowship	4	642,500	3	1,050,212	2	1,210,000	2	2,163,900	6	1,060,000
Scholarship/Fellowship			1	960,000						
Student Services	2	340,570	1	30,000						
Total	30	13,100,230	20	2,680,523	38	9,329,115	53	17,849,273	58	12,272,536
Research & Graduate Studies										
Research					1	17,395,848				
Senior Vice Provost										
Academic Support					1	5,140	1	6,000		
Public Service			4	18,600	4	46,768	2	14,944	1	1,980
Research					2	228,791				
Student Services			1	6,000						
Total			5	24,600	7	280,699	3	20,944	1	1,980
Student Affairs										
Academic Support	1	1,312,495								
Public Service							2	83,013		
Student Services			3	1,324,750			2	1,145,656	3	4,306,533
Total	1	1,312,495	3	1,324,750			4	1,228,669	3	4,306,533
University Advancement										
Institutional Support			4	115,000	1	19,800				
University Police										
Institutional Support									1	15,000

Research Grant Proposal Submissions by UAA Units and Research Types

Fiscal Years 2012 - 2016

Table 5.12

		FY2012		FY2013		FY2014		FY2015		FY2016	
		N	\$	N	\$	N	\$	N	\$	N	\$
Kenai Peninsula College											
Academic Support								1	11,000		
Institutional Support										1	10,000
Instruction	5	893,558	6	1,128,243	9	2,011,743	2	584,689	3	957,248	
Public Service	4	18,000	2	13,000	2	12,000	1	6,000	3	14,000	
Research			2	113,641	1	60,992	1	174,336			
Total	9	911,558	10	1,254,884	12	2,084,735	5	776,025	7	981,248	
Kodiak College											
Academic Support	1	1,752,346						1	12,000		
Institutional Support								2	21,076	1	9,614
Instruction	1	103,452	5	792,014	4	1,299,973	3	396,364	2	291,287	
Public Service	1	1,800									
Total	3	1,857,598	5	792,014	4	1,299,973	6	429,440	3	300,901	
Matanuska-Susitna College											
Institutional Support								1	5,000		
Instruction	1	100,000	4	743,418	4	882,627	5	247,932			
Student Services								2	210,824	2	196,972
Total	1	100,000	4	743,418	4	882,627	8	463,756	2	196,972	
Prince William Sound College											
Academic Support										2	19,775
Institutional Support	3	24,242						1	1,416	4	71,517
Instruction	3	368,036	4	1,359,940	4	541,262	2	160,626	2	90,169	
Public Service	2	18,500			5	47,225	3	21,320	3	49,225	
Student Services	8	410,778	4	1,359,940	9	588,487	6	183,362	1	17,000	
Total	16	821,556	8	2,719,880	18	1,176,974	12	366,724	12	247,686	
UAA Total											
Academic Support	12	4,274,347	7	4,335,791	6	89,013	10	2,706,936	7	404,411	
Institutional Support	8	1,379,240	5	123,000	3	193,868	6	44,192	17	380,116	
Instruction	51	12,563,651	49	8,228,619	53	14,336,020	46	4,506,143	27	12,804,584	
Public Service	93	14,482,012	77	10,151,144	98	14,289,147	113	20,734,383	104	10,710,588	
Research	200	54,906,651	176	43,535,581	219	66,500,846	243	49,409,868	226	55,647,594	
Scholarship/Fellowship	8	1,489,132	5	1,190,212	7	3,221,445	5	2,630,124	8	1,080,140	
Scholarship/Fellowship			1	960,000							
Student Services	3	365,570	7	1,373,322			7	1,366,885	9	7,295,096	
Total	375	89,460,603	327	69,897,669	386	98,630,339	430	81,398,531	398	88,322,529	

Source: UAA Research and Graduate Studies Office, compiled by UAA IR.

Notes:

1. N = number of proposals submitted
2. \$ = amount requested of the proposals
3. Proposals with a status of "Withdrawn" have been excluded.

Average Dollars Contributed per Alumni Donor University of Alaska Anchorage

Table 5.13

Fiscal Year	Undergraduate Alumni	# of Alumni Donors	% Total Alumni Donors	Dollars Contributed	\$ per Donor (Ave. Gift Amount)	Minimum Donation	Maximum Donation
1997-98	13,633	28	0.2%	\$3,358	\$120	\$15	\$501
1998-99	14,175	25	0.2%	\$5,887	\$235	\$10	\$1,750
1999-00	15,000	38	0.3%	\$5,671	\$149	\$6	\$2,100
2000-01	15,800	24	0.2%	\$4,048	\$169	\$25	\$650
2001-02	17,375	24	0.1%	\$20,619	\$859	\$20	\$2,250
2002-03	15,586	171	1.1%	\$43,701	\$256	\$5	\$15,000
2003-04	16,080	541	3.4%	\$62,233	\$115	\$5	\$5,000
2004-05	24,510	937	3.8%	\$178,672	\$191	\$2	\$50,000
2005-06	27,854	671	2.4%	\$83,781	\$125	\$2	\$6,000
2006-07	28,264	1,471	5.2%	\$220,529	\$150	\$1	\$26,995
2007-08	30,789	1,864	6.1%	\$247,620	\$133	\$1	\$8,666
2008-09	33,314	1,632	4.9%	\$202,138	\$124	\$1	\$72,000
2009-10	35,839	2,132	5.9%	\$290,036	\$136	\$1	\$32,323
2010-11	39,289	2,036	5.2%	\$272,889	\$134	\$1	\$12,906
2011-12	41,211	2,042	5.0%	\$374,992	\$184	\$5	\$50,960
2012-13	40,083	2,144	5.3%	\$356,601	\$166	\$1	\$25,000
2013-14	45,524	1,815	4.0%	\$303,111	\$167	\$1	\$12,630
2014-15	46,202	1,627	3.5%	\$394,072	\$242	\$1	\$75,000
2015-16	42,603	1627	3.8%	\$454,491	\$279	\$1	\$75,000

Source: University Advancement Office.

Notes:

1. Results do not include trusts and estates.
2. Alumni undergraduate total reflects people with current addresses.
3. Alumni defined as individuals with conferred UAA degrees/certificates.
4. In 2004, Advancement upgraded their historical database which accounts for the dramatic alumni increase.
5. In 2014, Advancement researched lost alumni in database which accounts for the alumni increase.
6. FY16 alumni with bad addresses and no solicit requests have reduced total alumni count, search for lost alumni will be performed this summer.

Donations by Amount and Donor Type University of Alaska Anchorage

Table 5.14

	FY2013-14			FY2014-15			FY2015-16		
	# Donors	Total \$ Donated	Average Donations	# Donors	Total \$ Donated	Average Donations	# Donors	Total \$ Donated	Average Donations
\$1 - \$25									
Individual	522	11,954.51	23	586	12,623.06	22	604	13,567.42	22
Group	2	45	23	8	119	15	5	95	19
Total	524	12,000	23	594	12,742	21	609	13,662	22
\$26 - \$50									
Individual	467	22,585	48	513	24,525	48	509	24,668	48
Group	4	180	45	15	694	46	10	463	46
Total	471	22,765	48	528	25,219	48	519	25,130	48
\$51 - \$100									
Individual	562	54,785	97	703	68,723	98	794	73,983	93
Group	12	1,175	98	23	2,121	92	23	2,187	95
Total	574	55,960	97	726	70,845	98	817	76,170	93
\$101 - \$500									
Individual	314	89,699	286	499	138,508	278	592	154,975	262
Group	42	15,690	374	75	23,958	319	69	23,507	341
Total	356	105,388	296	574	162,466	283	661	178,481	270
\$501 - \$1,000									
Individual	74	67,567	913	125	111,727	894	118	99,554	844
Group	23	18,816	818	32	27,929	873	32	27,278	852
Total	97	86,383	891	157	139,656	890	150	126,832	846
\$1,001 - \$10,000									
Individual	86	239,598	2,786	123	295,438	2,402	118	294,039	2,492
Group	49	171,885	3,508	96	386,393	4,025	92	373,760	4,063
Total	135	411,484	3,048	219	681,831	3,113	210	667,799	3,180
\$10,001 - \$50,000									
Individual	11	204,811	18,619	13	234,441	18,034	11	238,250	21,659
Group	26	804,752	30,952	43	1,112,382	25,869	40	1,008,696	25,217
Total	37	1,009,563	27,285	56	1,346,823	24,050	51	1,246,946	24,450
\$50,001 - \$100,000									
Individual	1	100,000	100,000	2	180,000	90,000	3	255,316	85,105
Group	6	456,645	76,108	12	952,426	79,369	13	1,017,169	78,244
Total	7	556,645	79,521	14	1,132,426	80,888	16	1,272,485	79,530
\$100,001 - \$500,000									
Individual				1	101,060	101,060			
Group	5	793,590	158,718	13	2,503,610	192,585	12	2,436,802	203,067
Total	5	793,590	158,718	14	2,604,670	186,048	12	2,436,802	203,067
\$500,001+									
Individual	1	503,000	503,000						
Group	1	600,000	600,000	2	2,132,568	1,066,284	1	1,500,000	1,500,000
Total	2	1,103,000	551,500	2	2,132,568	1,066,284	1	1,500,000	1,500,000
Total UAA									
Individual	2,038	736,215	361	2,565	997,262	389	2,749	1,080,369	393
Group	170	2,861,603	16,833	319	7,140,079	22,383	297	6,387,769	21,508
Total	2,208	3,597,817	1,629	2,884	8,137,341	2,822	3,046	7,468,139	2,452
% Change			50.6%			73.2%			-13.1%

Source: University Advancement Office.

Definition of Terms

Academic Rank: The rank held by persons having the title of professor, associate professor, and assistant professor; title denotes academic rank exclusively; the title of instructor may also be a title of academic rank at the discretion of the policies and procedures approved for each university.

Academic Year (AY): At UAA and UA, is a 3-term, 12-month period beginning with Summer opening and ending with Spring closing commonly identified by reference to the calendar year in which it ends; e.g. AY 2012 (Also known as AY 11-12) includes Summer 2011, Fall 2011, and Spring 2012. (IPEDS, UA, and UAA IR).

Adjunct Faculty: Faculty with temporary assignments.

Adjusted Cohort: The result of removing any allowable exclusions from a cohort (or sub-cohort). For the Graduation Rates component, this is the cohort from which graduation and transfer-out rates are calculated; for the Fall Enrollment component, it is the cohort for calculating retention rate. Allowable exclusions are students who have died or were permanently disabled, left to serve in the armed forces, left to serve with a foreign aid service of the federal government (e.g. Peace Corp), or left to serve on official church mission.

Admitted Student: Applicant who has been granted an official offer to enroll in a postsecondary institution.

Applied Student: An individual who has fulfilled the institution's requirements to be considered for admission (including payment or waiving of the application fee, if any) and who has been notified of one of the following actions: admission, non-admission, placement on waiting list, or application withdrawn by applicant or institution.

Assistant Professor: At UAA, initial appointment criteria for persons who meet the minimum criteria for initial appointment to this rank as follows: Tripartite Academic = Terminal degree in the discipline or appropriate field and evidence of a potential for successful teaching, service, and research/creative activity; Bipartite Academic = Master's degree in the discipline or appropriate field and two years documented successful teaching and service; and Bipartite Vocational Education = Bachelor's degree in the discipline or appropriate field and two years documented successful teaching and/or related work experience beyond the apprentice level in an area directly related to the faculty appointment.

Associate Degree: An award conferred by the Alaska Board of Regents that signifies successful completion of a defined program of study. Note: at UAA, all associate degrees require a minimum of 60 semester hours but no more than 75 credit hours.

Associate Professor: At UAA, criteria for persons who meet the minimum criteria for initial appointment to this rank are as follows: Tripartite Academic = Terminal degree in the discipline or appropriate field and five years successful performance at the rank of assistant professor, including evidence of accomplishment in the area of research/creative activity; Bipartite Academic = Master's degree in the discipline or appropriate field and eight years successful teaching and service in an appropriate institution of higher education and evidence of professional development in the area of teaching or pedagogically related activities or creativity; and Bipartite Vocational Education = Master's degree in the discipline or appropriate field and three years documented successful teaching or Bachelor's degree plus 30 semester hours of systematic study in a closely related discipline.

Auxiliary Enterprises Expenditures: Expenditures for self-supporting operations of the institution that exist to furnish a service to students, faculty, or staff, and that charge a fee that is directly related to, although not necessarily equal to, the cost of the service. Examples include residence halls, food services, student health services, intercollegiate athletics (if self-supporting) college stores, faculty and staff parking.

Auxiliary Services Revenue: Revenues generated by or collected from the auxiliary enterprise operations of the institution that exist to furnish a service to students, faculty, or staff, and that charge a fee that is directly related to, although not necessarily equal to, the cost of the service. Auxiliary enterprises are managed as essentially self-supporting activities.

Baccalaureate Degree: A degree that normally requires at least 120 credit hours of full-time equivalent college-level work. It signifies successful completion of a defined program of study that consists of both lower- and upper-division coursework. Traditionally known as a four-year degree. At UAA, all Baccalaureate degrees require a minimum of 120 to 132 semester credits.

Budget: An estimate, often itemized, of expected income and expense for a given period in the future.

Calendar Year: A 12-month time period commencing January 1 and ending December 31.

Campus: A location of an institution that is geographically apart; and is permanent in nature; offers at least 50% of the courses of an educational program leading to a degree, certificate, or other educational credential; has its own faculty and administrative organization; and has its own budgetary and hiring authority. Examples: Anchorage, Mat-Su, Kenai Peninsula, Kodiak, and Prince William Sound.

Certification: A process by which an agency or association grants recognition to an individual who has met certain predetermined qualifications specified by that agency or association.

Capital Improvement Program (CIP) Receipts: CIP receipts are generated by chargeback to capital improvement projects to support CIP personal service administrative costs.

Class Standing: Class standing is an administrative classification and does not necessarily reflect progress toward completion of a degree. Class standing is based on total credits earned and is used for determining priority registration (UAA catalog).

Clerical and Secretarial: A primary function or occupational activity category used to classify persons whose assignments typically are associated with clerical activities or are specifically of a secretarial nature. Includes personnel who are responsible for internal and external communications, recording and retrieving of data (other than computer programmer) and/or information and other paperwork required in an office. (IPEDS).

Cohort: A specific group of students established for tracking purposes. (IPEDS).

College: An aggregation of two or more academic departments into a major academic organizational unit. Its primary purposes are to provide governance, resource management and planning support for carrying out instruction, research and public service functions and offering programs. A College is typically supervised by a Dean who exercises authority and responsibility over all permanent and temporary faculty and staff assigned to departments under the college's jurisdiction. At UAA, there are six academic colleges. (UAA, UAA IR).

Community Campus: A location of an institution that is geographically apart and independent of the main campus and (1) is permanent in nature; (2) offers at least 50% of the courses of an educational program leading to a degree, certificate, or other educational credential; (3) has its own faculty and administrative organization; and (4) has its own budgetary and hiring authority. Within UAA, a community campus is supervised by a Director with emphasis on administrative and academic functions although also has responsibility for site and facilities. At UAA, they also offer programs of study leading to certificates and associate degrees. (UAA, UAA IR).

Course: A defined subset of instructional activity in which students enroll to acquire knowledge and/or complete graduation requirements. Each course is identified by a unique combination of two fields: Discipline (or its course prefix equivalent) and course number (an indicator of subject matter level). (UAA IR).

Course Level: The course number indicates the course level. Developmental courses are typically numbered 050 to 099, lower division courses are numbered 100 to 299, upper division courses are numbered 300 to 499, professional courses are numbered 500 to 599, and graduate courses are numbered 600 and above. Non-credit courses have a course number of 001 to 049 or do not have course numbers.

Degree: An award conferred by the Alaska Board of Regents as official recognition for the successful completion of a program of study.

Degree Seeking: At UAA, a student who has declared a degree-seeking intent by applying for and meeting university admission requirements to a degree or certificate program. They may apply for admission as undeclared majors and still be considered as degree seeking.

Department: A university-defined administrative organizational unit that organizes resources for creation and dissemination of knowledge within associated disciplines. Academic departments are responsible for creating, offering, and evaluating of courses, and providing instructional and research support to faculty who work in the disciplines.

Developmental Course: Course that provides basic or supplemental preparation for introductory college courses. This type of course is not applicable to certificate or associate, baccalaureate or graduate degree, even by petition. Courses are numbered from 060 to 099.

Discipline: A defined subset of knowledge and inquiry within the universe of knowledge as classified by the National Classification of Instructional Program (CIP). (UAA IR).

Doctoral Degree: The highest award a student can earn for graduate study. The Doctoral degree includes such degrees as Doctor of Education and the Doctor of Philosophy in many fields of study. (IPEDS).

Enrollment: A duplicate count of students enrolled ("seats occupied") in all course section offerings (credit or non-credit) on the official census date of each term. The same student is counted in each section of official enrollment; e.g. a student enrolled in 3 class sections is counted as 3 enrollees. (UAA IR).

Executive, Administrative and Managerial: Professional staff whose assignments require primary (and major) responsibility for management of the institution or a customarily recognized department or subdivision thereof. Assignments require the performance of work directly related to management policies or general business operations of the institution. It is assumed that assignments in this category customarily and regularly require the incumbent to exercise discretion and independent judgment and to direct the work of others. Excludes supervisors of the technical, clerical, craft, and service/maintenance workforce. (IPEDS).

Extended Site: A site or center outside the confines of the parent institution where courses are offered that are part of an organized program at the parent institution. The site is not considered to be temporary, but may be rented or made available to the institution at no cost by another institution or an organization, agency, or firm. Traditionally, a physical site located away from the main campus, e.g., Chugiak/Eagle River "campus", military education centers, etc. where students gather to receive instruction from university-affiliated faculty. (UAA, IPEDS).

Faculty Workload: Permanent and term faculty are awarded a workload with five (5) part assignments. Tripartite faculty assignments are generally three parts instructional (0.6 FTE), one part research (0.2 FTE), and one part service (0.2 FTE). Bipartite assignments are four parts instructional (0.8 FTE) and one part service (0.2 FTE).

Federal Receipts: All revenue received from the federal government. These include restricted federal grants from such agencies as the National Science Foundation, Department of Health and Human Services, National Institutes of Health, and other federal agencies, as well as additional federal funding for student financial aid and work-study programs.

Financial Aid: Federal Work Study, grants, loans to students (government and/or private), assistantships, scholarships, fellowships, tuition waivers, tuition discounts, employer aid (tuition reimbursement) and other monies (other than from relatives/friends) provided to students to meet expenses. This excludes loans from parents.

First-Time Freshman: A degree-seeking student who enrolls in an institution with no prior postsecondary experience. Includes students enrolled in academic or occupational programs. Also includes students enrolled in the fall term who attended college for the first time in the prior summer term, or students who entered with advanced standing (college credits earned before graduation from high school). (UAA IR).

Fiscal Year (FY): A 12-month period for maintaining financial records. Generally, the State of Alaska FY begins on July 1 and ends the following June 30. The federal fiscal year starts October 1 and ends September 30. (UAA IR).

Freshman: Admitted, first-time, continuing or returning first-year undergraduate student who has successfully completed, either at this university or approved credit from another college/university, a total of 29 credit hours or less. Excludes audit credit. (UAA IR).

Full-Time Equivalent Students (FTES): The full-time equivalent (FTE) of students is a single value providing a meaningful combination of full-time and part-time students. The convention used for calculation is annual Student Credit Hours (SCH) divided by 30 or 24 credit hours for undergraduate and graduate students respectively. If FTES is calculated for a single semester, then the divisor used is 15 or 12 credit hours for undergraduate and graduate students respectively. An additional convention sometimes used by UAA IR is total full-time students plus one-third part-time students. (IPEDS) This calculation is used where SCH are not available.

Full-Time Student: An undergraduate student who is enrolled at UAA for 12 or more credits or a graduate student enrolled at UAA for 9 or more 600 level credits is classified as full-time. Audited courses, credit-by-examination courses, continuing education units (CEUs) and professional development courses (500 level) are not included in the computation for full-time status.

General Fund Appropriations: Legal authority to expend resources received by an institution through acts of a legislative body, except grants and contracts. These funds are for meeting current operating expenses and not for specific projects or programs. The most common example is a state's general appropriation. For UAA, this is the State of Alaska's appropriation to the university system.

Governance Unit: An administrative unit under the university's organizational structure at any level including campuses, colleges, and all functional departments.

Grade: A university-recognized symbol used to signify a student's academic performance and/or document actions taken by the university relative to a student in a particular class section. See UAA catalog for specific grading information. (UAA IR).

Graduate Certificate: A graduate-level certificate program is a coherent sequence of related graduate courses between 12 to 19 credit hours. These programs are designed to provide graduate education past the baccalaureate level and/or to enhance the education of students who already have a master's degree. (UAA Catalog).

Graduate Level Courses: Graduate-level courses require a background in the discipline and an ability to contribute to written and oral discourse on advanced topics in the field at a level beyond that required by a bachelor's degree. Graduate courses have course numbers of 600 - 699.

Graduate Student: A student who holds a baccalaureate and is admitted/accepted to a graduate program at UAA and enrolled in graduate level (600+) courses.

Graduation Rate: The percentage of first-time, full-time undergraduate certificate- and degree-seeking students enrolled in a given fall semester who earn a degree within six years (150% of the time to complete a four-year degree) or three years (150% of the time to complete a two-year degree). This rate is required for disclosure and/or reporting purposes under the Student Right-To-Know Act and is defined by the the US Department of Education. (IPEDS).

Grants and Contracts: Revenues from governmental agencies and nongovernmental parties that are for specific research projects, other types of programs, or for general institutional operations (if not governmental appropriations). Examples include research programs, training programs, student financial assistance, Pell Grants, etc. for which amounts are received or expenses are reimbursable under the terms of a grant or contract. (IPEDS).

Headcount: An unduplicated count of unique individuals (in total or in a cohort) who are enrolled at UAA in credit courses on the official semester/term census date. The unduplicated count can be for a single semester or an academic year. Note: Headcount is unduplicated at the campus level but may be duplicated at the university level because students taking courses at more than one campus may be counted more than once. (UAA IR).

Institutional Support: A functional expense category that includes expenses for the day-to-day operational support of the institution. Includes expenses for general administrative services, central executive-level activities concerned with management and long range planning, legal and fiscal operations, space management, employee personnel and records, logistical services such as purchasing and printing, and public relations and development. Also includes information technology expenses related to institutional support activities. If an institution does not separately budget and expense information technology resources, the IT costs associated with student services and operation and maintenance of plant will also be applied to this function.

Instructional Expenditure: A functional expenditure category that includes expenditures of the colleges, schools, departments, and other instructional divisions of the institution and expenditures for departmental research and public service that are not separately budgeted. Includes expenditures for both credit and non-credit activities. Excludes expenditures if they are separately budgeted.

Instructional FTEF: That portion of a university employee's total assignment (budgeted or actual) that is designated to provide instruction and/or direct instructional support to students during the term/year regardless of payment or funding source for performing that function. Note: Academic Unit Profile separates Instructional Support (I) reported as Staff Expense. (UAA IR).

Instructor: Initial appointment criteria for persons who meet the minimum criteria to this rank are as follows: Tripartite Academic = competence in the profession or discipline and ability to effectively communicate training and subject matter to others. Appointees will hold minimal credentials; Bipartite Academic = competence in the profession or discipline and ability to effectively communicate training and subject matter to others. Appointees will hold minimal credentials; Bipartite Vocational Education = competence in the profession or discipline and ability to effectively communicate training and subject matter to others. Appointees will hold credentials. (Faculty Services).

Junior: An admitted undergraduate student who has successfully completed, either at this university or approved credit from another college/university, a total of 60-89 credit hours. Excludes audit credit. (UAA IR).

Lower Division Course: This type of course is usually a foundation course which introduces a field of knowledge or connects the foundation with advanced work in a given field. Courses are typically numbered between 100 and 299. Lower division courses are usually taken by freshmen and sophomores.

Major: A field of knowledge and inquiry a student may pursue as a primary interest focus. Although non-admitted students may take coursework associated with a major, only admitted students may formally declare a major. (UAA, UAA IR).

Master's Degree: A credential conferred by the Alaska Board of Regents signifying successful completion of a program of study consisting of courses/experiences above the Baccalaureate degree of at least 30 semester credits beyond the baccalaureate degree and at least 21 of those credits must be at the graduate course level. (UAA, UAA IR).

Minor: A field of knowledge and inquiry a student may pursue as a secondary interest focus. Minors are usually not required elements in a program of study, no degrees are awarded in a minor and must be earned in conjunction with a baccalaureate. (UAA).

Non-Credit Course: Courses offered as career development, adult basic education, continuing education or community interest instruction. Not applicable to any degree or certificate requirements (even by petition). They have no regular tuition but do have other special fees. These courses are number from 001 to 049.

Non-Degree Seeking (NDS): A student enrolled in courses for credit who is not recognized by the institution as seeking a degree or formal award. A student who has not formally declared intention of earning a degree from this university. A student can be NDS at one campus and degree seeking at another. (IPEDS, UAA IR).

Occupational Endorsement Certificate (OEC): Certificate requiring 9 to 29 hours to complete. This certificate provides specialized knowledge and skills needed in specific employment sectors.

Opening/Closing Freeze: The official dates set by the university state system each Fall, Spring and Summer terms when the university extracts ("freezes") data elements from UA system source data files for use in preparing official comparable management information for internal and external use. Opening/closing freezes vary by type of data file, e.g. student, finance, human resources. (UAA IR).

Origin at Entry: Origin at entry is the location of a student when first enrolling at the university: city for students from Alaska, state for students other than Alaska, and country for international students. (UA, UAA IR).

Part-Time Student: An undergraduate student with a term credit load of 1-11 semester credits or a graduate student with a term credit load of 1-8 semester credit hours of 600 level courses during a particular semester. (IPEDS, UAA IR).

Post-Baccalaureate Student: A student with a bachelor's degree admitted to and enrolled in a post-baccalaureate certificate program.

Post-Baccalaureate Certificate: An award that requires completion of an organized program of study equivalent from 24 to 60 semester credit hours beyond the bachelor's. It is designed for persons who have completed a baccalaureate degree, but does not meet the requirements of a master's degree. (IPEDS).

Pre-Major: Assigned to students who have been accepted for general admission to the degree level of their desired program but have not yet been formally accepted to a specific program. Usually they remain in this status while completing program prerequisites and/or department-level admission processes. Pre-majors have class standing and may be eligible for financial aid and international student visas. (UAA, UAA IR).

Professor: At UAA, initial appointment criteria (an extraordinary event) for persons who meet the minimum criteria for initial appointment to this rank are as follows: Tripartite Academic and Bipartite Academic = May be appointed based on exemplary academic performance. Terminal degree in the discipline or appropriate field and national or international reputation for excellence. Bipartite Vocational Education = May be appointed based on exemplary academic performance and Master's degree in vocational education and six years outstanding documented teaching and/or professional experience beyond the apprentice level or a national or international reputation for excellence in the discipline. Promotion criteria are as follows: Tripartite Academic = Terminal degree in the discipline or appropriate field and evidence of exemplary teaching, service and research/creative activity and five years at the rank of associate professor, of which three must be at this university; Bipartite Academic = Terminal degree in the discipline or appropriate field and evidence of exemplary teaching and service and five years at the rank of associate professor of which three must be at this university. Note: Master's degree shall be considered the terminal degree for former community college faculty who transferred to this university under 1987 BOR policy. (Faculty Services).

Program: Requires three components: a discipline or major (e.g., Psychology, Mathematics, International Studies); a degree or certificate level (e.g. Associate, Bachelors, Masters); and degree type (e.g. Associate of Applied Science, Bachelor of Arts).

Race/Ethnicity: Categories developed by the Office of Management and Budget (OMB) that are used to describe groups to which individuals belong, identify with, or belong in the eyes of the community. The designations are used to categorize U.S. citizens, resident aliens, and other eligible non-citizens. Individuals are asked to first designate ethnicity as: Hispanic or Latino or Not Hispanic or Latino. Second, individuals are asked to indicate one or more races that apply among the following: American Indian or Alaska Native, Asian, Black or African American, Native Hawaiian/Pacific Islander, White. (IPEDS). Where an individual chooses more than one race and it includes Alaska Native, that individual is included in an Alaska Native Multirace internally.

Regular/Term Assignment: Individuals who are hired as permanent employees of the university and are eligible to receive salary and all benefits to perform their designated job duties. Term-funded employees can be regular employees. Their appointment is typically to an academic unit for an academic year. They are generally regarded as having a continuing appointment. (HRS).

Revenue: The inflow of resources or other enhancement of net assets of an institution or settlements of its liabilities from delivering or producing goods, rendering services, or other activities that constitute the institution's ongoing major or central operations. Includes revenues from fees and charges, auxiliary enterprises, and contributions and other non-exchange transactions. (IPEDS).

Semester: A calendar system that consists of two sessions called semesters during the academic year with about 15 weeks of instruction. (IPEDS).

Senior: An admitted undergraduate student who has successfully completed, either at this university or approved credit from another college/university, a total of 90+ credit hours. Excludes audit credit. (UAA IR).

Sophomore: An admitted undergraduate student who has successfully completed, either at this university or approved credit from another college/university, a total of 30-59 credit hours. Excludes audit credit. (UAA IR).

State and Local Grants: State and local monies awarded to the institution under state and local student aid programs, including the state portion of State Student Incentives Grants (SSIG).

Student: Any person for whom the university maintains an educational record and meets one or more of the following criteria: (1) officially enrolled in a course (credit or non-credit) offered under university authority, (2) is on an approved student exchange, internship, or other program of study. (UAA IR).

Student Assistant: Student who is employed by this university, predominantly through Work Study funds, to perform a variety of non-professional assignments in support of the university. (UAA IR).

Student Credit Hour (SCH): A weighted statistic that represents the students being served. In fixed credit courses it is the sum of the product of course section credit times the course section enrollment.

Student Fee: Amounts charged to students for items or services not covered by tuition or course fees; e.g. Student Health Center fee, application fee. (UAA IR).

Student Services Expenditure: A functional expenditure category that includes expenditures for admissions, registrar activities, and activities whose primary purpose is to contribute to students emotion and physical well-being and to their intellectual, cultural, and social development outside the context of their formal instructional program; e.g. student activities, student newspaper, intramural athletics, student organizations and student records. (IPEDS).

Summer Session: A summer session is shorter than a regular semester. The institution may have two or more sessions occurring in the summer months.

Technical/Paraprofessional: A primary function or occupational activity category used to classify persons whose assignments require specialized knowledge or skills which may be acquired through experience, apprenticeship, on-the-job-training, or academic work in occupationally specific programs that result in a 2-year degree or other certificate or diploma. Includes persons who perform some of the duties of a professional in a supportive role, which usually requires less formal training and/or experience than normally required for professional status.

Temporary Employee: Casual labor, adjunct faculty, and employees who do not work in budgeted position.

Tenure: Status of a personnel position with respect to permanence of the position according to the terms of Alaska Regents Policy 04.04.040(B). Its purpose is to assure an environment that will nurture academic freedom by providing employment security. At UAA, qualitative criteria for tenure are determined by individual schools and colleges. Faculty with initial appointment to full professor are awarded tenure at the time of appointment. Initial appointments to associate professor may be made with/without tenure but the latter must be reviewed for tenure no later than the 4th consecutive year of service. All non-tenured assistant professor appointees must be reviewed for tenure no later than the 7th consecutive year of service. Tenure may be awarded to faculty holding the rank of instructor, and time in the rank of instructor shall count toward tenure. Faculty who are not awarded tenure by the end of their mandatory year of review shall be offered a terminal appointment for one additional year of service. (BOR, IPEDS, Faculty Services).

Tenure Track: Faculty who are eligible to apply for tenure.

Tuition: The amount of money charged to students for instructional services. Tuition may be charged per semester or session, per course, or per credit and may vary.

UA Receipts: Private unrestricted gifts, grants, contracts, endowment revenue, sales and services of educational activities, vending machine revenue, rent, athletic ticket sales, etc. (UAA IR).

UA Scholar: A resident student attending an Alaska high school who is recruited by the UA system and offered a scholarship for placing in the top ten percent of his/her graduating class, regardless of graduating class size, based on GPA at the end of their junior year. The number of UA Scholars in a reported term is defined as the sum of the following three internal classification levels: (1) Paid UA Scholar—all enrolled students receiving a UA Scholar distribution in the reported term; (2) Non-Paid UA Scholar—paid in past term but not in reported term; and (3) Non-Paid Eligible Scholar—Never paid but eligible in reported term. (UAA IR).

Undergraduate Certificate: A formal award certifying the satisfactory completion of a postsecondary education program as approved by the Board of regents. Requires a minimum of 30 and a maximum of 60 semester credit hours.

Undergraduate Student: A student enrolled in a bachelor's degree program, an associate's degree program, or certificate program below the baccalaureate.

University of Alaska Anchorage (UAA): One of the post-secondary institutions of the University of Alaska statewide system of public higher education. It is accredited by the Northwest Commission on Colleges and Universities, which is recognized by the U.S. Department of Education.

Upper Division Course: Upper division courses require a background in the discipline recognized through course prerequisites, junior or senior standing, or competency based requirements. Course with numbers between 300 to 499. Upper division courses are usually taken by juniors and seniors.

Workforce Credentials: Composed of non-credit courses.