

UAA

University of Alaska Anchorage

FACT BOOK 2018-19





October 2019

TO: UAA Community
FROM: Erin J. Holmes, PhD
Associate Vice Provost, Institutional Research
SUBJECT: 2018-19 Fact Book

This is the 2018-19 Fact Book for your use. An electronic version of the Fact Book is available at Institutional Research's public website (www.uaa.alaska.edu/ir) and its *IR-Reports* site on SharePoint. Also available at the site are detailed electronic reports on a range of topics.

Please feel free to contact the Office of Institutional Research with any questions, comments or suggestions you may have. Additionally, if you see items that need correction or would like to see other information, please let us know. Your feedback helps Institutional Research provide the information you need for your decision-making and planning.



UNIVERSITY *of* ALASKA ANCHORAGE

FACT BOOK 2018-19

October 2019

OFFICE OF INSTITUTIONAL RESEARCH

3211 Providence Drive, BOC3 - Suite 340

Anchorage, AK 99508

<http://www.uaa.alaska.edu/ir/>

Phone: 907.786.1493

Fax: 907.786.1499

Dr. Erin Holmes, *Associate Vice Provost*
Yuan-Fang Dong, *Senior Research Associate*
Coy Gullett, *Director of Business Intelligence*
Ginger Mongeau, *Research Associate*
John Zetterman, *System Architect*
Ester Bayne, *Research Assistant*

Unless otherwise noted, all numbers included in this Fact Book were compiled and produced by UAA's Office of Institutional Research using official closing freeze data in the UA Decision Support Database (DSD) data system, and are reported for University of Alaska. For data reported at the statewide system level (University of Alaska), please see UA in Review, produced by the University of Alaska Data Strategy and Institutional Research. This report can be viewed at the following link: <http://www.alaska.edu/swbir/ir/reports/ua-in-review/>

***Special Thanks for Contributions
and Proofreading Assistance***

Renee Carter-Chapman
Sara Juday
Chris McConnell
Kelly Thorngren
David Woodley

Front Cover:

Photo by James Evans, UAA Advancement

Upper middle: UAA/APU Consortium Library featuring the gold Beacon of Knowledge.

Lower left: Members of the UAA Steel Bridge Construction Team.

Lower middle: Photo from fall 2018 Commencement.

Lower right: Jamie Byers, at the Symphony of Sounds, February 2019.

Back Cover:

Photo by James Evans, UAA Advancement
Changing the World sculpture by Patrick Garley.

The University of Alaska is an affirmative action/equal opportunity employer and educational institution. The University of Alaska does not discriminate on the basis of race, religion, color, national origin, citizenship, age, sex, physical or mental disability, status as a protected veteran, marital status, changes in marital status, pregnancy, childbirth or related medical conditions, parenthood, sexual orientation, gender identity, political affiliation or belief, genetic information, or other legally protected status. The University's commitment to nondiscrimination, including against sex discrimination, applies to students, employees, and applicants for admission and employment. Contact information, applicable laws, and complaint procedures are included on UA's statement of nondiscrimination available at www.alaska.edu/nondiscrimination.

TABLE OF CONTENTS

INTRODUCTION

University of Alaska Anchorage Locations	2
Introduction to the 2018-19 UAA Fact Book	3
University of Alaska Anchorage Leadership	4
Organizational Structure	5
Fast Facts About UAA Campuses	6
Fall 2018 Enrollment Summary	7
UAA Peer Institutions	8

STUDENTS

STUDENT HEADCOUNT, FALL CLOSING 2018	
By Characteristics and Campus	10
By Graduate / Undergraduate Level and Characteristics - UAA Total	12
STUDENT HEADCOUNT BY CHARACTERISTICS, FALL 2014 - 2018	
University of Alaska Anchorage Total	14
First-time Freshman	16
STUDENT HEADCOUNT BY DECLARED PROGRAMS OF STUDY, FALL 2014 - 2018	
By Major, Degree Type, and Campus / College	20
LONG TERM TRENDS OF STUDENT HEADCOUNT, ACADEMIC YEARS 2010 - 2019	
By Campus and Term	37
APPLIED, ACCEPTED, AND ENROLLED AT UAA, FALL 2014 - 2018	
Undergraduate Students	38
Graduate Students	40

ENROLLMENT

STUDENT CREDIT HOURS	
By Discipline, Five-Year Trend: Fall Semesters 2014 - 2018	43
By Semester and Campus, Long-Term Trend, Academic Years 2000 - 2019	56
e-LEARNING	
Headcount, Seat Count & SCH by Origin of Courses vs. Origin of Students Admitted, Academic Years 2015 - 2019	58

AWARDS

DEGREE AND CERTIFICATE AWARDS CONFERRED	
By Campus Summary, Academic Years 2015 - 2019	63
By Award Type, Academic Years 2015 - 2019	64
Degree and Certificate Awards by Classification of Instructional Program (CIP), Academic Years 2015 - 2019	65
Long-Term Trends, Academic Years 1988 - 2019	66

FACULTY AND STAFF

EMPLOYEES

Employee Headcount Trends by UAA Administrative Unit, Fall 2014 - 2018 (All Employees)	68
Employee Headcount Trends by UAA Administrative Unit, Fall 2014 - 2018 (Regular and Term)	69
Employee Headcount Trends by UAA Administrative Unit, Fall 2014 - 2018 (Temporary)	70
Employee Characteristics by Campus, Fall 2018 (All Employees)	71
Employee Characteristics by Campus, Fall 2018 (Regular and Term)	72
Employee Characteristics by Campus, Fall 2018 (Temporary)	73

FACULTY

Regular and Term Faculty Characteristics by Campus, Fall 2018	74
Student Credit Hours Generated by Faculty Type, Fall 2018	76
Number of Course Sections Taught by Faculty Type, Fall 2018	77

FINANCE, GRANTS AND GIVING

BUDGET

Authorized State Appropriation Budget, Fiscal Years 2015 - 2019	80
Total Authorized Budget, Fiscal Years 2015 - 2019	80
Actual State Appropriation Expenditures, Fiscal Years 2014 - 2018	81
Total Actual Expenditures, Fiscal Years 2014 - 2018	81
Summary of UAA Expenditures by Functional Categories, Fiscal Years 2015 - 2019	82
Authorized UAA Expenditure Budget (Unrestricted) Instruction Component Only, Fiscal Years 2015 - 2019	84
Summary of UAA Revenue Received, Fiscal Years 2015 - 2019	85

RESEARCH GRANTS

Awards by University Units and Fund Agencies, Fiscal Year 2019	86
Awards by University Units and Functional Categories, Fiscal Years 2015 - 2019	89
Proposal Submissions by University Units and Fund Agencies, Fiscal Year 2019	92
Proposal Submissions by University Units and Functional Categories, Fiscal Years 2015 - 2019	95

ALUMNI GIVING

Average Dollars Contributed per Alumni Donor, Fiscal Years 1998 - 2019	98
Donations by Amount and Donor Type, Fiscal Years 2017 - 2019	99

TUITION

UAA Tuition Rate History, Fiscal Years 2016 - 2020	100
--	-----

DEFINITION OF TERMS

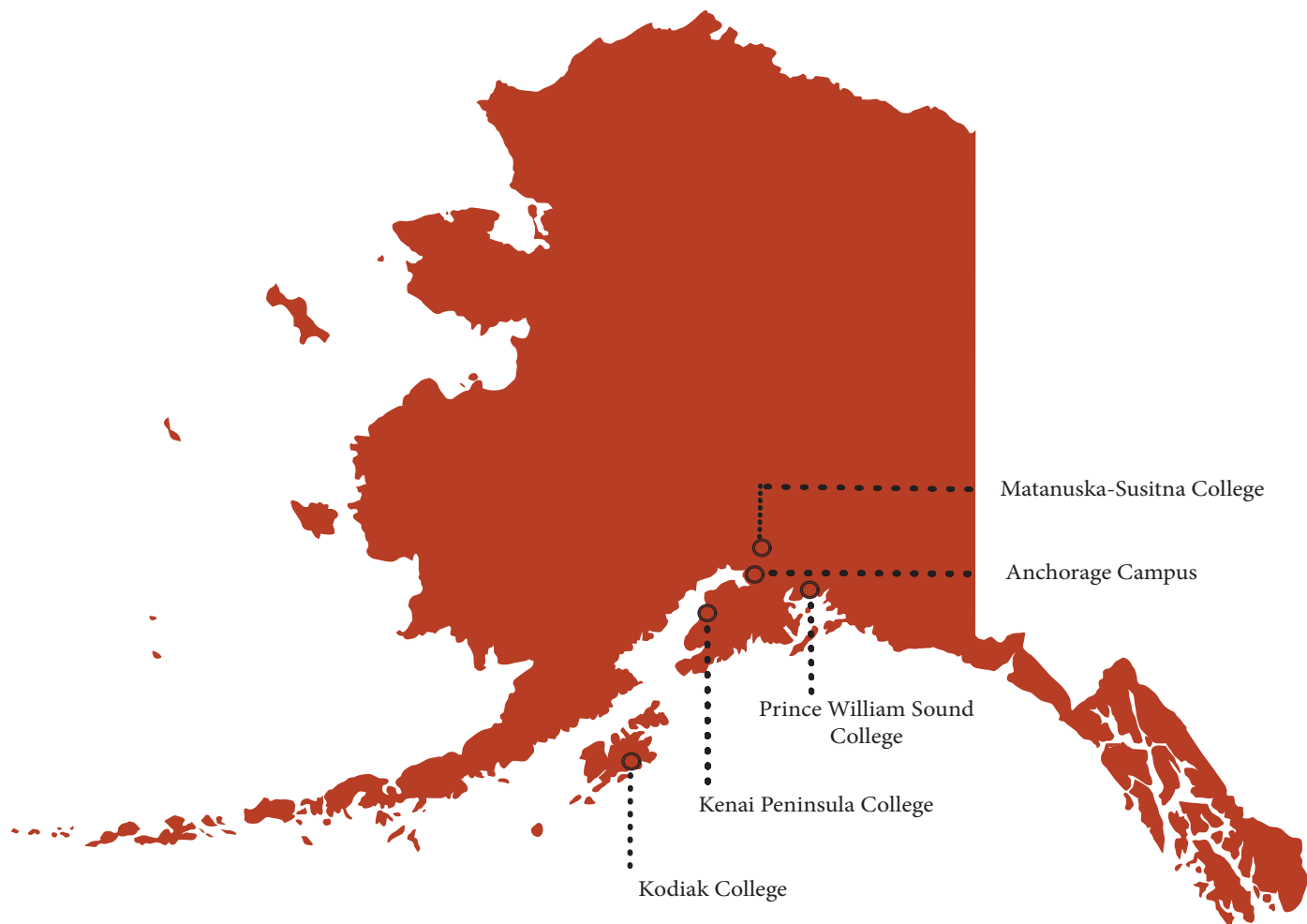
Definitions	102
-------------	-----

Introduction



UNIVERSITY *of* ALASKA ANCHORAGE

LOCATIONS



INTRODUCTION

The University of Alaska Anchorage (UAA) is a multi-campus university that serves 24,000 students each year and has a service area as expansive as the state of Montana. UAA is the largest university in the state and one of three separately accredited universities in the University of Alaska Statewide System.

For a young institution, UAA has an extremely complex history. The present university was created in 1987 following a statewide reorganization that merged a university with several community colleges. In one form or another, these institutions have offered educational opportunities to the communities of southcentral Alaska since the 1950s.

Partly due to this unique history, UAA today is an open access university with one of the broadest missions in higher education. UAA offers instruction ranging from Adult Basic Education to graduate and professional education, serves both traditional and non-traditional students, and confers awards ranging from occupational endorsements to associate, baccalaureate, master's, and doctoral degrees. Through partnerships and affiliate programs, UAA also offers instruction leading to medical and other professional degrees. Through its centers and institutes, the university's research helps Alaskans to improve their health, public policy, education, training, economic development, and quality of life.

UAA is accredited by the Northwest Commission of Colleges and Universities (NWCCU). Many individual academic programs have additional specialized accreditation from professional associations and other external entities.

UAA is classified by the Carnegie Foundation for the Advancement of Teaching as a public Master's Colleges & Universities: Larger Programs, with a special classification for Community Engagement. Distinctive educational opportunities include undergraduate research, national and international exchanges, and study abroad programs. UAA has been named to the 2019-20 *Military Friendly Schools list*, the 11th consecutive year by Victory Media.

Major Campuses and Academic Units

Anchorage Campus

- College of Arts & Sciences
- College of Business & Public Policy
- College of Engineering
- College of Health
- Community & Technical College
- University Honors College
- Graduate School*

Kenai Peninsula College

Kodiak College

Matanuska-Susitna College

Prince William Sound College

* Supports the graduate curriculum and research offered through all Colleges and Schools.



UNIVERSITY *of* ALASKA ANCHORAGE

LEADERSHIP

The mission of the University of Alaska Anchorage is to discover and disseminate knowledge through teaching, research, engagement, and creative expression.

Located in Anchorage and on community campuses in Southcentral Alaska, UAA is committed to serving the higher education needs of the state, its communities, and its diverse peoples.

The University of Alaska Anchorage is an open-access university with academic programs leading to occupational endorsements; undergraduate and graduate certificates; and associate, baccalaureate, and graduate degrees in a rich, diverse, and inclusive environment.

CATHY SANDEEN, Chancellor

JOHN STALVEY, Interim Provost and Executive Vice Chancellor, Academic Affairs

BEVERLY SHUFORD, Vice Chancellor, Administrative Services

BRUCE SCHULTZ, Vice Chancellor, Student Affairs

MEGAN OLSON, Vice Chancellor, University Advancement

RENEE CARTER-CHAPMAN, Senior Vice Provost, Academic Affairs

ANCHORAGE COLLEGES

College of Arts & Sciences

John Petraitis, Interim Dean

College of Business & Public Policy

Karen Markel, Dean

College of Engineering

Kenrick Mock, Interim Dean

College of Health

Jeff Jessee, Dean & Vice Provost of Health Programs

Community & Technical College

Denise Runge, Dean

Consortium Library

Steve Rollins, Dean

University Honors College

John Mouracade, Dean

COMMUNITY CAMPUSES

Kenai Peninsula College

Gary Turner, Director

Kodiak College

Betty Walters, Interim Director

Matanuska-Susitna College

Talis Colberg, Director

Prince William Sound College

J. Dan O'Connor, Director

UNIVERSITY GOVERNANCE

Faculty Senate

Scott Downing, President, 2019 - 2020

Maria Williams, President, 2018 - 2019

Staff Council

John Moore, Dawn Humenik, Co-Presidents, 2019 - 2020

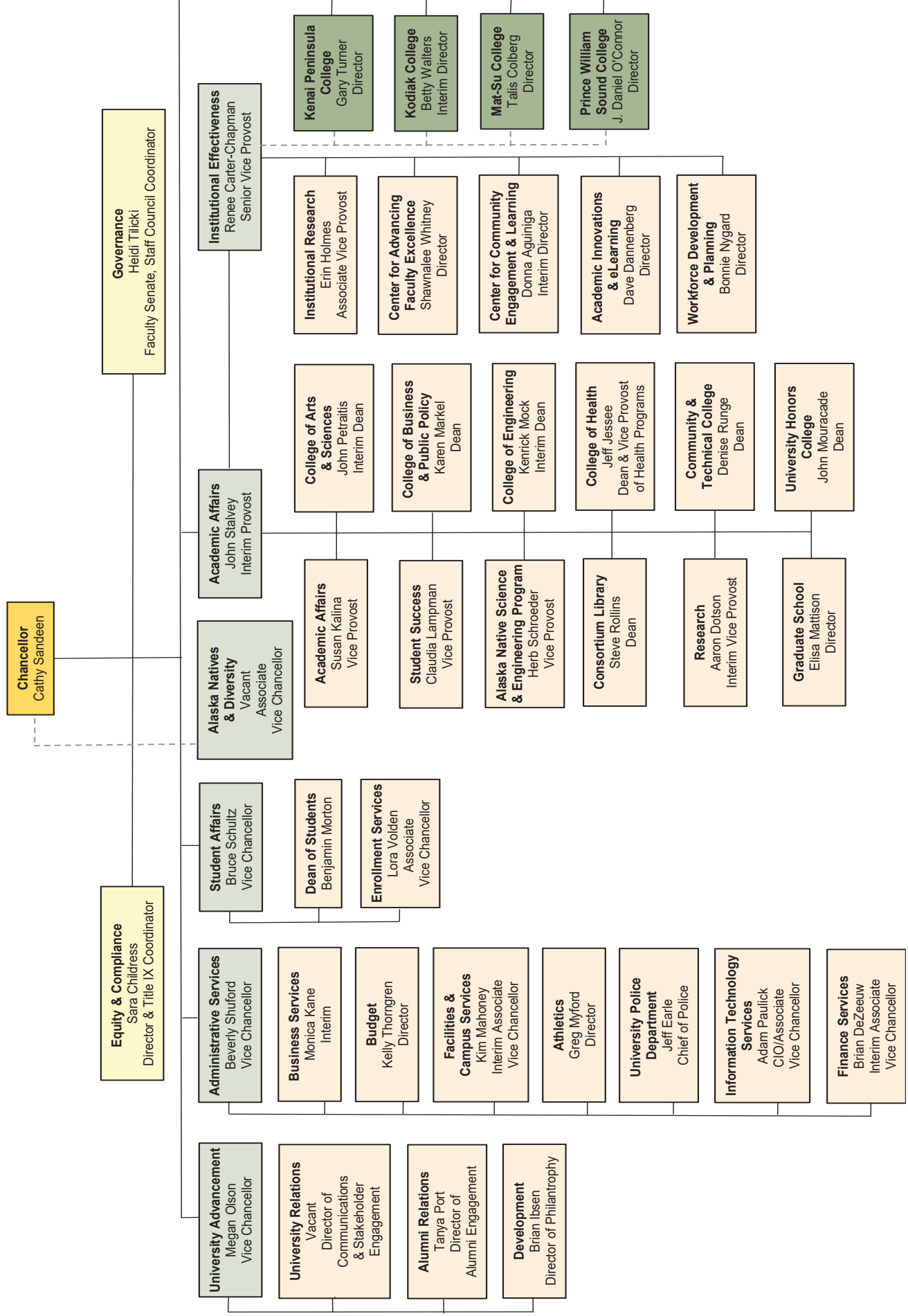
Brenda Levesque, John Moore, Co-Presidents, 2018 - 2019

USUAA Student Government

Clare Baldwin, President, 2019 - 2020

Geser Bat-Erdene, President, 2018 - 2019

ORGANIZATIONAL STRUCTURE



FAST FACTS

UAA TOTAL		Anchorage Campus		Kenai Peninsula College	
STUDENTS		STUDENTS		STUDENTS	
AY 18-19 Student Credit Hours	304,483	AY 18-19 Student Credit Hours	240,168	AY 18-19 Student Credit Hours	27,313
Headcount	23,586	Headcount	18,486	Headcount	4,256
Full-time Equivalent	10,316	Full-time Equivalent	8,178	Full-time Equivalent	909
Awards Granted	2,317	Awards Granted	2,058	Awards Granted	87
Fall 2018 Headcount	16,530	Fall 2018 Headcount	13,158	Fall 2018 Headcount	2,476
Full-time	6,651	Full-time	5,939	Full-time	947
Part-time	9,879	Part-time	7,219	Part-time	1,529
FACULTY AND STAFF—FALL 2018		FACULTY AND STAFF—FALL 2018		FACULTY AND STAFF—FALL 2018	
Regular Faculty	603	Regular Faculty	526	Regular Faculty	33
Adjunct Faculty	564	Adjunct Faculty	363	Adjunct Faculty	81
Staff	1,276	Staff	1,059	Staff	93
FACILITIES		FACILITIES		FACILITIES	
Square Feet	3,342,007	Square Feet	2,894,400	Square Feet	183,214
FINANCE—FY 2019 (IN \$000)		FINANCE—FY 2019 (IN \$000)		FINANCE—FY 2019 (IN \$000)	
Univ. Generated Revenue	\$175,630.0	Univ. Generated Revenue	\$156,858.2	Univ. Generated Revenue	\$8,090.8
Research Focus Expenditure	\$17,723.1	Research Focus Expenditure	\$17,723.1	Research Focus Expenditure	\$0.0
Total Budget Authority	\$311,264.1	Total Budget Authority	\$270,903.0	Total Budget Authority	\$15,893.6
Gross Tuition	\$72,912.7	Gross Tuition	\$60,355.9	Gross Tuition	\$5,542.1
TVEP Awards	\$2,284.4	TVEP Awards	\$1,638.0	TVEP Awards	\$269.6
Kodiak College		Matanuska-Susitna College		Prince William Sound College	
STUDENTS		STUDENTS		STUDENTS	
AY 18-19 Student Credit Hours	6,669	AY 18-19 Student Credit Hours	23,631	AY 18-19 Student Credit Hours	6,702
Headcount	1,389	Headcount	2,441	Headcount	2,235
Full-time Equivalent	221	Full-time Equivalent	785	Full-time Equivalent	223
Awards Granted	24	Awards Granted	127	Awards Granted	21
Fall 2018 Headcount	721	Fall 2018 Headcount	1,559	Fall 2018 Headcount	895
Full-time	237	Full-time	725	Full-time	152
Part-time	484	Part-time	834	Part-time	743
FACULTY AND STAFF—FALL 2018		FACULTY AND STAFF—FALL 2018		FACULTY AND STAFF—FALL 2018	
Regular Faculty	13	Regular Faculty	25	Regular Faculty	6
Adjunct Faculty	23	Adjunct Faculty	72	Adjunct Faculty	25
Staff	29	Staff	51	Staff	44
FACILITIES		FACILITIES		FACILITIES	
Square Feet	44,981	Square Feet	152,145	Square Feet	67,267
FINANCE—FY 2019 (IN \$000)		FINANCE—FY 2019 (IN \$000)		FINANCE—FY 2019 (IN \$000)	
Univ. Generated Revenue	\$1,677.8	Univ. Generated Revenue	\$6,115.4	Univ. Generated Revenue	\$2,887.7
Research Focus Expenditure	\$0.0	Research Focus Expenditure	\$0.0	Research Focus Expenditure	\$0.0
Total Budget Authority	\$5,424.1	Total Budget Authority	\$13,099.8	Total Budget Authority	\$5,943.5
Gross Tuition	\$1,240.1	Gross Tuition	\$4,946.6	Gross Tuition	\$828.1
TVEP Awards	\$105.2	TVEP Awards	\$157.3	TVEP Awards	\$114.2

Sources and Notes:

Students:	UA Statewide Institutional Research (IR) Decision Support Database (DSD) data at semester closing. Student Credit Hours include auditors. Awards Granted include: Undergraduate Certificates, Associate, Bachelor, Master, Doctorate, Endorsements, Licensure, Post Graduate, Post Baccalaureate, and Graduate Certificates. Headcount is for credit students only; students who enrolled in multiple campuses have been counted only once in the UAA total.
Faculty & Staff:	UA Statewide IR DSD data at Fall Freeze. Staff includes full-time & part-time employees but does not include graduate or student assistants.
Facilities:	UAA Facilities and Campus Services.
Finance:	UAA Office of Budget. Research Focus Expenditure is defined by UA Statewide as Basic Research. TVEP stands for Technical / Vocational Education Program.

FALL 2018 ENROLLMENT SUMMARY

Course Level	UAA Total	Anchorage Campus	Kenai Peninsula	Kodiak College	Mat-Su College	PW Sound College
Student Headcount						
Total Credit Headcount	16,530.0	13,158.0	2,476.0	721.0	1,559.0	895.0
Full-time	6,651.0	5,939.0	947.0	237.0	725.0	152.0
Part-time	9,879.0	7,219.0	1,529.0	484.0	834.0	743.0
Full-time as a % of Total	40.2%	45.1%	38.2%	32.9%	46.5%	17.0%
All Students	16,714.0	13,181.0	2,601.0	757.0	1,559.0	895.0
(includes credit and non-credit students)						
Credit Hours						
Developmental (050-099)	3,553.0	2,346.0	591.0	117.0	457.0	42.0
Lower Division (100-299)	99,553.5	72,133.5	11,217.0	2,882.0	10,645.0	2,676.0
Upper Division (300-499)	30,201.0	29,370.0	732.0	45.0	54.0	
Professional (500-599)	3,440.0	3,298.0	123.0			19.0
Graduate (600-699)	5,438.0	5,438.0				
Credited Hours Total	142,185.5	112,585.5	12,663.0	3,044.0	11,156.0	2,737.0
Audited Hours	306.0	179.0	74.0	12.0	34.0	7.0
Enrollment (Seat Count)						
Developmental (050-099)	1,116.0	720.0	197.0	43.0	142.0	14.0
Lower Division (100-299)	35,834.0	26,048.0	3,849.0	1,057.0	3,706.0	1,174.0
Upper Division (300-499)	10,441.0	10,146.0	261.0	15.0	19.0	
Professional (500-599)	2,151.0	2,090.0	42.0			19.0
Graduate (600-699)	1,787.0	1,787.0				
Enrollment Total	51,329.0	40,791.0	4,349.0	1,115.0	3,867.0	1,207.0
Student FTE						
Developmental (050-099)	236.9	156.4	39.4	7.8	30.5	2.8
Lower Division (100-299)	6,636.9	4,808.9	747.8	192.1	709.7	178.4
Upper Division (300-499)	2,013.4	1,958.0	48.8	3.0	3.6	
Professional (500-599)	286.7	274.8	10.3			1.6
Graduate (600-699)	453.2	453.2				
Student FTE Total	9,627.0	7,651.3	846.3	202.9	743.7	182.8
Course Sections						
Developmental (050-099)	64.0	37.0	12.0	5.0	8.0	2.0
Lower Division (100-299)	1,925.0	1,261.0	247.0	95.0	237.0	85.0
Upper Division (300-499)	708.0	676.0	27.0	2.0	3.0	
Professional (500-599)	206.0	200.0	4.0			2.0
Graduate (600-699)	255.0	255.0				
Course Sections Total	3,158.0	2,429.0	290.0	102.0	248.0	89.0
Canceled Credit Courses	215.0	136.0	41.0	13.0	19.0	6.0

Source: UA Statewide Institutional Research (IR) Decision Support Database (DSD) data system at semester closing freeze.

Notes:

1. Headcount is unduplicated and includes auditors.
2. Student credit hours do not include audited hours.
3. Total Course Sections do not include cancelled sections.
4. Canceled sections are those cancelled after students enrolled.

PEER INSTITUTIONS

Arkansas Tech University

Boise State University

CUNY College of Staten Island

Ferris State University

Florida Gulf Coast University

Idaho State University

Indiana University-Purdue University - Fort Wayne

McNeese State University

Northern Kentucky University

Northwestern State University of Louisiana

Purdue University - Calumet Campus

The University of Texas at Brownsville

Troy University

University of Arkansas at Little Rock

University of West Florida

Weber State University

Western Kentucky University

Youngstown State University

Students

Headcount by Characteristics and Campus

UAA - Fall Closing 2018

Table 1.01

	UAA Total	% of Total	Anchorage Campus	Kenai Peninsula	Kodiak College	Mat-Su College	PW Sound College
UAA Total	16,530	100.0%	13,158	2,476	721	1,559	895
Admission Type							
New	2,353	14.2%	1,605	322	84	452	79
Continue	10,217	61.8%	8,780	1,585	479	856	301
Returned	3,919	23.7%	2,749	554	158	247	511
Transfer	41	0.2%	24	15		4	4
Class Standing							
First-time Freshman	1,672	10.1%	1,335	185	44	245	56
Freshman	1,849	11.2%	1,394	356	98	258	54
Sophomore	2,172	13.1%	1,794	491	151	287	66
Junior	1,841	11.1%	1,639	360	108	180	49
Senior	3,105	18.8%	2,896	401	113	120	57
Graduate	762	4.6%	762	2		3	
Non-Degree / Other UA Prog	5,129	31.0%	3,338	681	207	466	613
Full-time							
Graduate	199	1.2%	199	1		3	
Undergraduate	6,452	39.0%	5,740	946	237	722	152
Total	6,651	40.2%	5,939	947	237	725	152
Part-time							
Graduate	626	3.8%	625	1		2	
Undergraduate	9,253	56.0%	6,594	1,528	484	832	743
Total	9,879	59.8%	7,219	1,529	484	834	743
Gender							
Female	9,783	59.2%	7,935	1,516	480	918	398
Male	6,562	39.7%	5,127	887	232	619	491
Not Reported	185	1.1%	96	73	9	22	6
Race / Ethnicity							
African American	469	2.8%	425	57	12	23	10
Alaska Native	804	4.9%	606	126	56	64	56
Alaska Native Multirace	792	4.8%	667	115	37	82	30
American Indian	107	0.6%	76	19	6	11	16
Asian	1,011	6.1%	929	113	56	18	20
Hispanic	1,129	6.8%	935	155	59	94	46
Hispanic Multirace	110	0.7%	91	17	4	15	5
Native Hawaiian / Pacific Is	265	1.6%	228	30	25	13	10
White	9,208	55.7%	7,317	1,354	350	1,040	503
Non Hispanic Multirace	869	5.3%	729	115	36	79	23
Non Resident Alien	295	1.8%	269	37	11	7	7
Not Reported	1,471	8.9%	886	338	69	113	169

Headcount by Characteristics and Campus UAA - Fall Closing 2018

Table 1.01

	UAA Total	% of Total	Anchorage Campus	Kenai Peninsula	Kodiak College	Mat-Su College	PW Sound College
Age							
0 - 17	1,253	7.6%	502	262	92	314	126
18 - 18	1,236	7.5%	947	164	38	179	38
19 - 19	1,268	7.7%	1,060	179	40	141	33
20 - 24	4,609	27.9%	4,023	732	186	377	143
25 - 29	2,482	15.0%	2,088	414	129	183	89
30 - 39	2,819	17.1%	2,278	447	139	197	185
40 - 49	1,493	9.0%	1,238	176	55	98	80
50 - 59	943	5.7%	750	66	30	44	106
60 & Over	427	2.6%	272	36	12	26	95
Residency Origin							
In State	15,002	90.8%	11,851	2,265	660	1,498	827
Out of State	1,192	7.2%	1,004	169	49	53	60
International	295	1.8%	269	37	11	7	7
Not Reported	41	0.2%	34	5	1	1	1
Degree Level							
Certificate	199	1.2%	131	25	11	40	13
Associate	2,742	16.6%	1,748	716	218	512	116
Bachelor	7,659	46.3%	7,140	1,052	283	538	153
Master's	663	4.0%	663	2		3	
Doctorate	41	0.2%	41				
Graduate Certificate	58	0.4%	58				
Post Baccalaureate Certificate	39	0.2%	39		2		
Non-Degree / Other UA Prog	5,129	31.0%	3,338	681	207	466	613
Attempted Credit Hours							
0 - 2.9	2,052	12.4%	1,570	59	26	31	470
3 - 5.9	2,956	17.9%	2,462	1,518	553	600	305
6 - 8.9	2,701	16.3%	2,092	511	77	309	67
9 - 11.9	2,284	13.8%	1,992	173	29	249	16
12 - 14.9	4,249	25.7%	3,245	172	26	314	26
15 & Over	2,288	13.8%	1,797	43	10	56	11

Source: UA Statewide IR Decision Support Database (DSD) data system at semester closing.

Notes:

1. UAA Total includes Anchorage, Kenai, Kodiak, Matanuska-Susitna, and Prince William Sound College. Headcount is unduplicated and includes only credit students. Students who enrolled in multiple campuses have been counted only once in UAA Total.
2. Included are students enrolled in credit courses at the 050 level and above, including auditors.
3. Percentages may not add to 100% due to rounding.
4. See Definition of Terms for meaning of First-time Freshman.
5. Non-Degree / Other UA Programs = Non-Degree seeking students or other University of Alaska program degree seekers.
6. New transfer code added to Admission Type was not captured in freeze data resulting in under count of Transfer and over count of Continue.

Headcount by Graduate / Undergraduate Level and Characteristics

UAA - Fall Closing 2018

Table 1.02

	Graduate Students			Undergraduate Students		
	UAA Total	% of Total	UAA Programs	Other UA Prog	Total	% of Total
UAA Total	16,530	100.0%	762	63	825	100.0%
Admission Type						
New	2,353	14.2%	12	3	15	1.8%
Continue	10,217	61.8%	709	31	740	89.7%
Returned	3,919	23.7%	41	29	70	8.5%
Transfer	41	0.2%				
Class Standing						
First-time Freshman	1,672	10.1%				
Freshman	1,849	11.2%				
Sophomore	2,172	13.1%				
Junior	1,841	11.1%				
Senior	3,105	18.8%				
Graduate	762	4.6%	762		762	92.4%
Non-Degree / Other UA Prog	5,129	31.0%		63	63	7.6%
Full-time						
Graduate	199	1.2%	198	1	199	24.1%
Undergraduate	6,452	39.0%				
Total	6,651	40.2%	198	1	199	24.1%
Part-time						
Graduate	626	3.8%	564	62	626	75.9%
Undergraduate	9,253	56.0%				
Total	9,879	59.8%	564	62	626	75.9%
Gender						
Female	9,783	59.2%	494	47	541	65.6%
Male	6,562	39.7%	267	16	283	34.3%
Not Reported	185	1.1%	1		1	0.1%
Race / Ethnicity						
African American	469	2.8%	24	1	25	3.0%
Alaska Native	804	4.9%	29	8	37	4.5%
Alaska Native Multirace	792	4.8%	28	3	31	3.8%
American Indian	107	0.6%	4		4	0.5%
Asian	1,011	6.1%	30	1	31	3.8%
Hispanic	1,129	6.8%	44	2	46	5.6%
Hispanic Multirace	110	0.7%	2		2	0.2%
Native Hawaiian / Pacific Is	265	1.6%	8		8	1.0%
White	9,208	55.7%	517	41	558	67.6%
Non Hispanic Multirace	869	5.3%	30	3	33	4.0%
Non Resident Alien	295	1.8%	21	1	22	2.7%
Not Reported	1,471	8.9%	25	3	28	3.4%

Headcount by Graduate / Undergraduate Level and Characteristics

UAA - Fall Closing 2018

Table 1.02

	Graduate Students					Undergraduate Students		
	UAA	% of	UAA	Other UA	% of	% of	% of	
	Total	Total	Programs	Prog				Total
Age								
0 - 17	1,253	7.6%	1		1	0.1%	1,252	8.0%
18 - 18	1,236	7.5%					1,236	7.9%
19 - 19	1,268	7.7%					1,268	8.1%
20 - 24	4,609	27.9%	68	5	73	8.8%	4,536	28.9%
25 - 29	2,482	15.0%	187	13	200	24.2%	2,282	14.5%
30 - 39	2,819	17.1%	299	19	318	38.5%	2,501	15.9%
40 - 49	1,493	9.0%	127	16	143	17.3%	1,350	8.6%
50 - 59	943	5.7%	68	8	76	9.2%	867	5.5%
60 & Over	427	2.6%	12	2	14	1.7%	413	2.6%
Residency Origin								
In State	15,002	90.8%	623	56	679	82.3%	14,323	91.2%
Out of State	1,192	7.2%	113	5	118	14.3%	1,074	6.8%
International	295	1.8%	21	1	22	2.7%	273	1.7%
Not Reported	41	0.2%	5	1	6	0.7%	35	0.2%
Degree Level								
Certificate	199	1.2%					199	1.3%
Associate	2,742	16.6%					2,742	17.5%
Bachelor	7,659	46.3%					7,659	48.8%
Master's	663	4.0%	663		663	80.4%		
Doctorate	41	0.2%	41		41	5.0%		
Graduate Certificate	58	0.4%	58		58	7.0%		
Post Baccalaureate Certificate	39	0.2%					39	0.2%
Non-Degree / Other UA Prog	5,129	31.0%		63	63	7.6%	5,066	32.3%
Attempted Credit Hours								
0 - 2.9	2,052	12.4%	109	34	143	17.3%	1,909	12.2%
3 - 5.9	2,956	17.9%	202	25	227	27.5%	2,729	17.4%
6 - 8.9	2,701	16.3%	253	3	256	31.0%	2,445	15.6%
9 - 11.9	2,284	13.8%	115	1	116	14.1%	2,168	13.8%
12 - 14.9	4,249	25.7%	66		66	8.0%	4,183	26.6%
15 & Over	2,288	13.8%	17		17	2.1%	2,271	14.5%

Source: UA Statewide IR DSD data system at semester closing.

Notes:

1. UAA Total includes Anchorage, Kenai, Kodiak, Matanuska-Susitna, and Prince William Sound College. Headcount is unduplicated and includes only credit students. Students who enrolled in multiple campuses have been counted only once in UAA Total.
2. Included are students enrolled in credit courses at the 050 level and above, including auditors.
3. Percentages may not add to 100% due to rounding.
4. See Definition of Terms for meaning of First-time Freshman.
5. Non-Degree/Other UA Programs = Non-Degree seeking students or other University of Alaska program degree seekers.
6. New transfer code added to Admission Type was not captured in freeze data resulting in under count of Transfer and over count of Continue.

Headcount by Student Characteristics

UAA Total - Fall Semester Trends

Table 1.03

	2014	2015	2016	2017	2018	Percent Change	
						2014-18	2017-18
UAA Total	18,649	18,116	17,962	17,267	16,530	-11.4%	-4.3%
Anchorage Campus	14,754	14,357	14,308	13,702	13,158	-10.8%	-4.0%
Kenai Peninsula College	2,716	2,485	2,596	2,596	2,476	-8.8%	-4.6%
Kodiak College	793	804	767	762	721	-9.1%	-5.4%
Matanuska-Susitna College	1,844	1,899	1,775	1,682	1,559	-15.5%	-7.3%
Prince William Sound College	681	779	743	860	895	31.4%	4.1%
Admission Type							
New	2,733	2,805	2,616	2,760	2,353	-13.9%	-14.7%
Continue	11,274	10,580	10,320	9,863	10,217	-9.4%	3.6%
Returned	3,822	3,893	4,293	3,932	3,919	2.5%	-0.3%
Transfer	820	838	733	712	41	-95.0%	-94.2%
Class Standing							
First-time Freshman	2,005	1,982	1,900	1,930	1,672	-16.6%	-13.4%
Freshman	2,471	2,275	2,186	1,958	1,849	-25.2%	-5.6%
Sophomore	2,779	2,480	2,422	2,320	2,172	-21.8%	-6.4%
Junior	2,206	2,228	2,030	2,000	1,841	-16.5%	-8.0%
Senior	3,606	3,589	3,473	3,238	3,105	-13.9%	-4.1%
Graduate	910	872	772	764	762	-16.3%	-0.3%
Licensure			1				
Non-Degree / Other UA Prog	4,672	4,690	5,178	5,057	5,129	9.8%	1.4%
Full-time							
Graduate	232	245	200	190	199	-14.2%	4.7%
Undergraduate	7,476	7,324	7,078	6,966	6,452	-13.7%	-7.4%
Total	7,708	7,569	7,278	7,156	6,651	-13.7%	-7.1%
Part-time							
Graduate	732	678	641	650	626	-14.5%	-3.7%
Undergraduate	10,209	9,869	10,043	9,461	9,253	-9.4%	-2.2%
Total	10,941	10,547	10,684	10,111	9,879	-9.7%	-2.3%
Gender							
Female	10,964	10,607	10,558	9,992	9,783	-10.8%	-2.1%
Male	7,685	7,509	7,331	7,082	6,562	-14.6%	-7.3%
Not Reported			73	193	185		-4.1%
Race / Ethnicity							
African American	588	582	590	480	469	-20.2%	-2.3%
Alaska Native	932	936	859	834	804	-13.7%	-3.6%
Alaska Native Multirace	806	822	842	833	792	-1.7%	-4.9%
American Indian	131	109	113	118	107	-18.3%	-9.3%
Asian	1,237	1,254	1,216	1,232	1,011	-18.3%	-17.9%
Hispanic	1,187	1,192	1,236	1,219	1,129	-4.9%	-7.4%
Hispanic Multirace	79	79	88	87	110	39.2%	26.4%
Native Hawaiian / Pacific Is	133	138	116	136	265	99.2%	94.9%
White	11,020	10,512	10,489	9,952	9,208	-16.4%	-7.5%
Non Hispanic Multirace	873	949	941	944	869	-0.5%	-7.9%
Non Resident Alien	335	292	312	329	295	-11.9%	-10.3%
Not Reported	1,328	1,251	1,160	1,103	1,471	10.8%	33.4%

Headcount by Student Characteristics UAA Total - Fall Semester Trends

Table 1.03

	2014	2015	2016	2017	2018	Percent Change	
						2014-18	2017-18
Age							
0 - 17	869	732	993	1,198	1,253	44.2%	4.6%
18 - 18	1,416	1,425	1,334	1,350	1,236	-12.7%	-8.4%
19 - 19	1,541	1,476	1,425	1,342	1,268	-17.7%	-5.5%
20 - 24	5,844	5,680	5,397	5,034	4,609	-21.1%	-8.4%
25 - 29	3,042	3,015	2,823	2,719	2,482	-18.4%	-8.7%
30 - 39	2,963	2,979	3,013	2,846	2,819	-4.9%	-0.9%
40 - 49	1,547	1,444	1,502	1,469	1,493	-3.5%	1.6%
50 - 59	1,015	944	1,037	881	943	-7.1%	7.0%
60 & Over	391	419	434	428	427	9.2%	-0.2%
Not Reported	21	2	4			-100.0%	
Residency Origin							
In State	16,947	16,425	16,348	15,604	15,002	-11.5%	-3.9%
Out of State	1,333	1,357	1,267	1,280	1,192	-10.6%	-6.9%
International	335	292	313	329	295	-11.9%	-10.3%
Not Reported	34	42	34	54	41	20.6%	-24.1%
Degree Level							
Certificate	275	220	201	170	199	-27.6%	17.1%
Associate	4,048	3,773	3,474	3,197	2,742	-32.3%	-14.2%
Bachelor	8,725	8,531	8,295	8,045	7,659	-12.2%	-4.8%
Master's	771	729	653	631	663	-14.0%	5.1%
Doctorate	26	37	37	30	41	57.7%	36.7%
Graduate Certificate	113	106	82	103	58	-48.7%	-43.7%
Post Baccalaureate Certificate	19	30	41	34	39	105.3%	14.7%
Teaching Licensure			1				
Non-Degree / Other UA Prog	4,672	4,690	5,178	5,057	5,129	9.8%	1.4%
Attempted Credit Hours							
0 - 2.9	1,669	1,837	1,945	2,038	2,052	22.9%	0.7%
3 - 5.9	3,406	3,177	3,412	3,063	2,956	-13.2%	-3.5%
6 - 8.9	3,455	3,135	3,026	2,776	2,701	-21.8%	-2.7%
9 - 11.9	2,562	2,554	2,430	2,362	2,284	-10.9%	-3.3%
12 - 14.9	4,829	4,820	4,543	4,417	4,249	-12.0%	-3.8%
15 & Over	2,728	2,593	2,606	2,611	2,288	-16.1%	-12.4%

Source: UA Statewide IR DSD data system at semester closing.

Notes:

1. UAA Total includes Anchorage, Kenai, Kodiak, Matanuska-Susitna, and Prince William Sound College. Headcount is unduplicated and includes only credit students. Students who enrolled in multiple campuses have been counted only once in UAA Total.
2. Included are students enrolled in credit courses at the 050 level and above, including auditors.
3. See Definition of Terms for meaning of First-time Freshman.
4. Non-Degree / Other UA Programs = Non-Degree seeking students or other University of Alaska program degree seekers.
5. Changes in race definition resulted in a shift from Asian to the Native Hawaiian / Pacific Island group in fall 2018.
6. New transfer code added to Admission Type was not captured in freeze data resulting in under count of Transfer and over count of Continue in 2018.

First-Time Freshman by Student Characteristics

UAA - Fall Closing 2014 - 2018

Table 1.04

	2014	2015	2016	2017	2018	Percent Change	
						2014-18	2017-18
First-Time Freshman Total	2,005	1,982	1,900	1,930	1,672	-16.6%	-13.4%
Degree Level							
Certificate	29	33	21	23	28	-3.4%	21.7%
Associate	676	688	633	654	465	-31.2%	-28.9%
Bachelor	1,287	1,250	1,225	1,223	1,141	-11.3%	-6.7%
Occupational Endorsement	13	11	21	30	38	192.3%	26.7%
Course Load							
Full-time	1,448	1,395	1,364	1,382	1,201	-17.1%	-13.1%
Part-time	557	587	536	548	471	-15.4%	-14.1%
Attempted Credit Hours							
0 - 2.9	2	2		5	3	50.0%	-40.0%
3 - 5.9	79	89	63	79	57	-27.8%	-27.8%
6 - 8.9	213	201	204	205	193	-9.4%	-5.9%
9 - 11.9	263	295	269	259	218	-17.1%	-15.8%
12 - 14.9	1,050	1,045	941	952	873	-16.9%	-8.3%
15 & Over	398	350	423	430	328	-17.6%	-23.7%
Gender							
Female	1,122	1,077	1,056	1,052	916	-18.4%	-12.9%
Male	883	905	837	864	746	-15.5%	-13.7%
Not Reported			7	14	10		-28.6%
Age							
0 - 17	90	51	62	56	56	-37.8%	0.0%
18 - 18	1,092	1,139	1,041	1,092	989	-9.4%	-9.4%
19 - 19	380	378	355	346	286	-24.7%	-17.3%
20 - 24	258	253	246	256	197	-23.6%	-23.0%
25 - 29	80	85	101	95	70	-12.5%	-26.3%
30 - 39	63	48	69	63	50	-20.6%	-20.6%
40 - 49	25	20	19	18	17	-32.0%	-5.6%
50 - 59	15	8	6	4	6	-60.0%	50.0%
60 & Over	2		1		1	-50.0%	
Race / Ethnicity							
African American	70	68	65	57	57	-18.6%	0.0%
Alaska Native	128	150	137	125	130	1.6%	4.0%
Alaska Native Multirace	134	127	134	136	160	19.4%	17.6%
American Indian	10	8	17	6	5	-50.0%	-16.7%
Asian	185	211	187	207	121	-34.6%	-41.5%
Hispanic	171	134	147	169	137	-19.9%	-18.9%
Hispanic Multirace	14	10	14	12	23	64.3%	91.7%
Native Hawaiian / Pacific Is	16	24	19	29	92	475.0%	217.2%
White	1,020	981	912	931	714	-30.0%	-23.3%
Non Hispanic Multirace	138	147	140	150	131	-5.1%	-12.7%
Non Resident Alien	36	29	43	59	30	-16.7%	-49.2%
Not Reported	83	93	85	49	72	-13.3%	46.9%

First-Time Freshman by Student Characteristics

UAA - Fall Closing 2014 - 2018

Table 1.04

	2014	2015	2016	2017	2018	Percent Change	
						2014-18	2017-18
High School Percentile							
Top 10	206	211	85	192	163	-20.9%	-15.1%
75 - 89th	299	317	140	284	234	-21.7%	-17.6%
50 - 74th	459	461	197	387	376	-18.1%	-2.8%
25 - 49th	397	374	167	297	293	-26.2%	-1.3%
Bottom 25	212	215	110	211	167	-21.2%	-20.9%
Unknown	432	404	1,201	559	439	1.6%	-21.5%
High School GPA							
4.0 +	34	37	54	50	64	88.2%	28.0%
3.5 - 3.9	418	491	461	434	376	-10.0%	-13.4%
3.0 - 3.4	534	564	492	480	450	-15.7%	-6.3%
2.5 - 2.9	616	535	536	426	362	-41.2%	-15.0%
2.0 - 2.4	258	256	230	210	172	-33.3%	-18.1%
1.5 - 1.9	82	57	62	62	33	-59.8%	-46.8%
1.4 & Less	6	4	4	6	5	-16.7%	-16.7%
Unknown	57	38	61	262	210	268.4%	-19.8%
Residency Origin							
In State	1,881	1,858	1,775	1,778	1,565	-16.8%	-12.0%
Out of State	88	95	80	87	76	-13.6%	-12.6%
International	36	29	44	59	30	-16.7%	-49.2%
Not Reported			1	6	1		-83.3%

First-Time Freshman by Student Characteristics

UAA - Fall Closing 2014 - 2018

Table 1.04

	2014	2015	2016	2017	2018	Percent Change	
						2014-18	2017-18
High School Region							
Alaska Anchorage High Schools	995	940	921	936	814	-18.2%	-13.0%
Alaska Adult Learning Center	6	2	6	6	2	-66.7%	-66.7%
Alaska Middle College School					3		
Alaska Military Youth Academy	5	3		2	2	-60.0%	0.0%
Anchorage Christian Academy					1		
Anchorage Christian Schools	13	7	12	6	8	-38.5%	33.3%
Avail School	3	4	9	3	6	100.0%	100.0%
Bartlett High School	94	100	98	81	63	-33.0%	-22.2%
Benny Benson Secondary School	6	10	9	12	10	66.7%	-16.7%
Chugach Extension Corresp School	2		1	1	2	0.0%	100.0%
Chugiak High School	86	77	66	81	41	-52.3%	-49.4%
Crossroads High School	3	1		1		-100.0%	-100.0%
Dimond High School	128	115	113	117	112	-12.5%	-4.3%
Eagle River Christian High School	1		1			-100.0%	
Eagle River High School	46	61	52	48	54	17.4%	12.5%
East Anchorage High School	172	145	156	154	141	-18.0%	-8.4%
Family Partnership Charter	17	14	17	17	17	0.0%	0.0%
Frontier Charter School	9	12	8	7	10	11.1%	42.9%
Grace Christian School	11	16	9	9	9	-18.2%	0.0%
Highland Tech Charter School	4	7	8	5	6	50.0%	20.0%
Holy Rosary Academy		1	3	1	3		200.0%
Lumen Christi High School	2	9	5	9	4	100.0%	-55.6%
McLaughlin Secondary	2	1	2		1	-50.0%	
McLaughlin Youth Center	1	2			1	0.0%	
Polaris K-12 School	9	11	12	6	9	0.0%	50.0%
SAVE High School	19	8	11	9	10	-47.4%	11.1%
Save I Program	1	1	1	1	1	0.0%	0.0%
Service High School	139	123	124	121	112	-19.4%	-7.4%
South Anchorage High School	98	95	92	104	71	-27.6%	-31.7%
Steller Secondary Alternative	5	17	8	17	9	80.0%	-47.1%
True Vine Christian School	1					-100.0%	
Univ of AK Anchorage - High School	3		1			-100.0%	
West Anchorage High School	109	98	96	117	106	-2.8%	-9.4%
World Harvest Christian School			1	1			-100.0%

First-Time Freshman by Student Characteristics UAA - Fall Closing 2014 - 2018

Table 1.04

	2014	2015	2016	2017	2018	Percent Change	
						2014-18	2017-18
High School Region (continued)							
Alaska Gulf Coast High Schools	179	177	174	161	130	-27.4%	-19.3%
Alaska Interior High Schools	60	83	91	74	76	26.7%	2.7%
Alaska Mat-Su High Schools	261	255	247	245	223	-14.6%	-9.0%
Alaska Northern High Schools	49	49	40	31	34	-30.6%	9.7%
Alaska Other High Schools	125	110	101	111	119	-4.8%	7.2%
Alaska Southeast High Schools	43	63	40	60	43	0.0%	-28.3%
Alaska Southwest High Schools	52	67	49	40	54	3.8%	35.0%
American Military High School	5	5	5		1	-80.0%	
American Possessions	1	2	1		1	0.0%	
East North Central States	17	19	9	12	12	-29.4%	0.0%
East South Central States	7	12	7	9	2	-71.4%	-77.8%
GED (Outside Alaska)	19	18	17	17	19	0.0%	11.8%
Home School	11	8	11	4	3	-72.7%	-25.0%
International High Schools	25	16	21	13	4	-84.0%	-69.2%
Mid-Atlantic States	7	11	10	8	7	0.0%	-12.5%
Mountain States	30	29	30	28	18	-40.0%	-35.7%
New England States	5	8	5	7	3	-40.0%	-57.1%
No High School	1			1		-100.0%	-100.0%
Pacific States	57	51	61	47	42	-26.3%	-10.6%
South Atlantic States	22	27	20	23	19	-13.6%	-17.4%
Unknown High School	12	4	9	72	30	150.0%	-58.3%
West North Central States	9	9	16	13	4	-55.6%	-69.2%
West South Central States	13	19	15	18	14	7.7%	-22.2%

Source: UA Statewide IR DSD data system at semester closing.

Notes:

1. First-time Freshman is a degree-seeking student who enrolls in an institution with no prior postsecondary experience. Includes students enrolled in academic or occupational programs. Also includes students enrolled in the fall term who attended college for the first time in the prior summer term, or students who entered with advanced standing (college credits earned before graduation from high school).
2. Changes in race definition resulted in a shift from Asian to the Native Hawaiian / Pacific Island group in fall 2018.

Headcount Trends by Major, Degree Type, and Campus / College Fall Closing 2014 - 2018

Table 1.05

	2014	2015	2016	2017	2018
Anchorage Campus					
College of Arts & Sciences					
Anthropology					
Bachelor of Arts	63	79	88	62	57
Bachelor of Science	22	19	20	25	19
Master of Arts	28	30	26	28	23
Total	113	128	134	115	99
Applied Ethics					
One Year Certificate	2	2	1		
Applied Geological Sciences					
Master of Science					15
Art					
Bachelor of Arts	137	136	129	127	132
Bachelor of Fine Arts	10	7	12	14	11
Total	147	143	141	141	143
Biological Sciences					
Bachelor of Arts	74	69	60	39	29
Bachelor of Science	434	398	402	405	361
Master of Science	22	28	24	26	26
Total	530	495	486	470	416
Chemistry					
Bachelor of Science	84	38	19	18	46
Children's Mental Health					
Graduate Certificate	1	1	1	1	
Clinical Psychology					
Master of Science	26	19	20	16	19
Clinical-Community Psychology					
Ph.D.	26	31	28	23	30
Creative Writing & Literary Arts					
Master of Fine Arts	48	45	43	46	39
Dual Language					
Bachelor of Arts	17	19	14	9	4
English					
Bachelor of Arts	180	178	178	163	163
Master of Arts	14	12	15	12	13
Total	194	190	193	175	176
Environment & Society					
Bachelor of Arts	31	20	9	1	
Bachelor of Science	39	57	59	71	66
Total	70	77	68	72	66
General Program					
Associate of Arts	481	455	385	317	251

Headcount Trends by Major, Degree Type, and Campus / College Fall Closing 2014 - 2018

Table 1.05

	2014	2015	2016	2017	2018
Geological Science					
Bachelor of Science	111	85	88	77	70
History					
Bachelor of Arts	154	138	135	123	120
Interdisciplinary Studies					
Bachelor of Arts	1	1			1
Bachelor of Science	1	1		1	1
Master of Science	4	10	14	14	12
Total	6	12	14	15	14
International Studies					
Bachelor of Arts	79	69	76	85	64
Journalism & Public Communications					
Bachelor of Arts	116	119	118	119	100
Languages					
Bachelor of Arts	93	99	69	73	61
Liberal Studies					
Bachelor of Liberal Studies	18	7	6	2	
Mathematics					
Bachelor of Arts	22	16	13	11	7
Bachelor of Science	73	68	60	58	57
Total	95	84	73	69	64
Music					
Bachelor of Arts	4	24	25	27	14
Bachelor of Music			16	30	33
Total	4	24	41	57	47
Music Education					
Bachelor of Music	30	44	35	25	18
Music Performance					
Bachelor of Music	9	21	13	3	1
Natural Sciences					
Bachelor of Science	190	215	240	240	217
Philosophy					
Bachelor of Arts	31	31	24	20	25
Political Science					
Bachelor of Arts	74	65	59	64	73
Pre-Major Fine Arts					
Bachelor of Fine Arts	51	57	48	43	49
Pre-Major Languages					
Bachelor of Arts	1				
Pre-Major Music					
Bachelor of Arts	15				

Headcount Trends by Major, Degree Type, and Campus / College Fall Closing 2014 - 2018

Table 1.05

	2014	2015	2016	2017	2018
Anchorage Campus - College of Arts & Sciences (continued)					
Pre-Major Music Education					
Bachelor of Music	18	1			
Pre-Major Music Performance					
Bachelor of Music	17	1			
Psychology					
Bachelor of Arts	343	338	278	242	233
Bachelor of Science	89	105	125	149	156
Total	432	443	403	391	389
Sociology					
Bachelor of Arts	58	43	42	36	30
Bachelor of Science	6	8	5	10	12
Total	64	51	47	46	42
Theatre					
Bachelor of Arts	55	49	41	40	49
School of Education (SOE)					
SOE: Counselor Education					
Graduate Certificate		3		1	
Master of Education	38	37	18	6	
Total	38	40	18	7	
SOE: Early Childhood					
Post-Bachelor Certificate	8	5	6	1	4
SOE: Early Childhood Development					
Associate of Applied Science	50	40	40	41	31
One Year Certificate	5	3	1		
Total	55	43	41	41	31
SOE: Early Childhood Education					
Bachelor of Arts	211	193	161	146	117
SOE: Early Childhood Special Education					
Master of Education	17	8	9	9	13
SOE: Education					
Master of Arts in Teaching	27	20	28	31	36
SOE: Educational Leadership					
Master of Education	46	37	34	36	30
SOE: Elementary Education					
Bachelor of Arts	241	234	269	284	267
SOE: Elementary Education (K-6)					
Post-Bachelor Certificate	6	10	10	12	16
SOE: Language Education					
Graduate Certificate	25	29	29	40	3

Headcount Trends by Major, Degree Type, and Campus / College Fall Closing 2014 - 2018

Table 1.05

	2014	2015	2016	2017	2018
SOE: Master Teacher					
Master of Education	2				
SOE: Pre-Major Elementary Education					
Bachelor of Arts	1				
SOE: Principal					
Graduate Certificate	43	29	19	31	28
SOE: Reading Specialist					
Educational Endorsement		2			
SOE: Special Education					
Graduate Certificate	17	21	21	21	21
Master of Education	11	12	7	6	5
Total	28	33	28	27	26
SOE: Speech Language Pathology					
Post-Bachelor Certificate		12	21	11	12
SOE: Superintendent					
Educational Endorsement		1			
Graduate Certificate	12	3	1		
Total	12	4	1		
SOE: Teaching Credential-Special Education					
Licensure Program			1		
SOE: Teaching and Learning					
Master of Education	24	28	24	29	35
School of Education Total	784	727	699	705	618
College of Arts & Sciences Total	4,186	3,985	3,762	3,600	3,325
College of Business & Public Policy					
Accounting					
Associate of Applied Science	87	85	93	88	82
Bachelor of Business Administration	375	362	333	326	291
Total	462	447	426	414	373
Business Computer Information Systems					
Associate of Applied Science	17	17	15	18	13
Economics					
Bachelor of Arts	47	43	57	54	49
Bachelor of Business Administration	34	41	49	54	47
Total	81	84	106	108	96
Finance					
Bachelor of Business Administration	129	131	119	118	107

Headcount Trends by Major, Degree Type, and Campus / College Fall Closing 2014 - 2018

Table 1.05

	2014	2015	2016	2017	2018
Anchorage Campus - College of Business & Public Policy (continued)					
General Management					
Master of Business Administration	100	77	70	72	74
Global Logistics Supply Chain Management					
Bachelor of Business Administration	63	74	69	53	60
Global Supply Chain Management					
Master of Science	14	21	10	1	13
Logistics & Supply Chain Operations					
Associate of Applied Science	30	24	21	15	10
One Year Certificate	1	6	4	2	2
Occupational Endorsement Certificate			5		
Total	31	30	30	17	12
Management					
Bachelor of Business Administration	425	430	420	446	414
Management Information Systems					
Bachelor of Business Administration	56	57	63	47	50
Marketing					
Bachelor of Arts	1				
Bachelor of Business Administration	94	100	118	114	92
Total	95	100	118	114	92
Pre-Global Logistics Supply Chain Management					
Bachelor of Business Administration	1			1	4
Pre-Major Accounting					
Bachelor of Business Administration	6	6	5	1	1
Pre-Major Finance					
Bachelor of Business Administration	1	2	1	3	1
Pre-Major Management					
Bachelor of Business Administration	8	9	8	9	2
Pre-Major Management Information System					
Bachelor of Business Administration	1		1	1	1
Pre-Major Marketing					
Bachelor of Business Administration	2	1	2	1	2
Pre-Major Global Logistics Management					
Bachelor of Business Administration			1		
Pre-Major Economics					
Bachelor of Business Administration				1	2
Public Administration					
Master of Public Administration	35	36	33	32	36
Small Business Administration					
Associate of Applied Science	101	85	87	81	74
College of Business & Public Policy Total	1,628	1,607	1,584	1,538	1,427

Headcount Trends by Major, Degree Type, and Campus / College Fall Closing 2014 - 2018

Table 1.05

	2014	2015	2016	2017	2018
College of Engineering					
Applied Environmental Science & Technology					
Masters - Other	3	5	2		
Master of Science	10	6	3	2	
Arctic Engineering					
Master of Science	5	7	4	2	2
Civil Engineering					
Bachelor of Science	113	94	220	219	222
Masters of Civil Engineering	9	8	7	3	
Master of Science	18	19	30	36	33
Total	140	121	257	258	255
Computer Science					
Bachelor of Arts	50	55	48	47	39
Bachelor of Science	176	174	171	205	213
Total	226	229	219	252	252
Computer Systems Engineering					
Bachelor of Science		12	50	69	52
Electrical Engineering					
Bachelor of Science		15	95	124	118
Engineering					
Bachelor of Science	228	161	191	71	32
Engineering Management					
Master of Science	12	12	10	7	4
Environmental Regulation & Permitting					
Graduate Certificate	2	5	2		
Geographic Information Systems					
One Year Certificate	4	5	1		
Geomatics					
Associate of Applied Science	3	9	10	14	12
Bachelor of Science	73	69	77	69	61
Total	76	78	87	83	73
Mechanical Engineering					
Bachelor of Science		50	270	327	299
Master of Science	5	4	5	7	10
Total	5	54	275	334	309
Pre-Major Civil Engineering					
Bachelor of Science	106	127			
Pre-Major Computer Systems Engineering					
Bachelor of Science		14			
Pre-Major Electrical Engineer					
Bachelor of Science		31			
Pre-Major Mechanical Engineer					
Bachelor of Science		62			

Headcount Trends by Major, Degree Type, and Campus / College Fall Closing 2014 - 2018

Table 1.05

	2014	2015	2016	2017	2018
Anchorage Campus - College of Engineering (continued)					
Pre-Major Engineering					
Bachelor of Science	364	273			
Project Management					
Master of Science	65	73	61	46	31
Science Management					
Master of Science	1		2	3	
College of Engineering Total	1,247	1,290	1,259	1,251	1,128
College of Health					
Advanced Human Service Systems					
Graduate Certificate	4				
Children's Behavioral Health					
Occupational Endorsement Certificate	7	8	3	3	8
Children's Residential Service					
Occupational Endorsement Certificate		1			
Civic Engagement					
One Year Certificate			1		
Clinical Assistant					
Occupational Endorsement Certificate	2				
Conflict Resolution					
Occupational Endorsement Certificate	2		4	2	2
Dental Assisting					
Associate of Applied Science	9	7	5	11	4
One Year Certificate					1
Two Year Certificate	10	6	9	8	3
Total	19	13	14	19	8
Dental Hygiene					
Associate of Applied Science	25	21	15	12	4
Bachelor of Science	8	10	4	8	6
Total	33	31	19	20	10
Diagnostic Medical Sonography					
Associate of Applied Science	8	7	5	13	13
Dietetic Internship					
Graduate Certificate	8	6	7	8	6
Dietetics					
Bachelor of Science	13	17	20	19	17
Dietetics & Nutrition					
Master of Science					8
Family Nurse Practitioner					
Graduate Certificate		1			1

Headcount Trends by Major, Degree Type, and Campus / College Fall Closing 2014 - 2018

Table 1.05

	2014	2015	2016	2017	2018
Fire & Emergency Services Technology					
Associate of Applied Science	41	66	44	50	41
Health Sciences					
Bachelor of Science	5	23	50	74	61
Human Services					
Associate of Applied Science	130	117	105	84	64
Bachelor of Human Services	46	54	41	35	36
Bachelor of Science	1				
Total	177	171	146	119	100
Justice					
Bachelor of Arts	147	96	75	55	42
Legal Nurse Consultant Paralegal					
One Year Certificate			2		
Legal Studies					
Bachelor of Arts	11	14	24	27	30
Limited Radiography					
Occupational Endorsement Certificate	1	4	4	1	
Medical Assisting					
Associate of Applied Science	21	23	19	20	15
Medical Laboratory Science					
Bachelor of Science	82	104	120	118	87
Medical Laboratory Technology					
Associate of Applied Science	5	4	5	9	1
Medical Office Coding					
Occupational Endorsement Certificate	34	22	25	21	23
Medical Office Supply					
Occupational Endorsement Certificate	1	2			
Medical Technology					
Bachelor of Science	22	7	4	1	1
Nursing					
Associate of Applied Science	193	185	174	165	192
Nursing Education					
Graduate Certificate				1	
Nursing Science					
Bachelor of Science	202	186	176	219	276
Doctorate Nursing Practitioner		6	9	7	11
Master of Science	54	43	34	35	49
Total	256	235	219	261	336
Nutrition					
Bachelor of Science	16	10	7	6	
Paralegal Studies					
Associate of Applied Science	7	5	7	6	7
Two Year Certificate	1				
Post-Bachelor Certificate	2	1	2	4	4
Total	10	6	9	10	11

Headcount Trends by Major, Degree Type, and Campus / College Fall Closing 2014 - 2018

Table 1.05

	2014	2015	2016	2017	2018
Anchorage Campus - College of Health (continued)					
Pharmacy Technology					
Occupational Endorsement Certificate	14	15	13	18	16
Phlebotomist					
Occupational Endorsement Certificate	5	3	6	2	6
Physical Education					
Bachelor of Science	100	120	104	101	102
Physical Therapist Assistant					
Associate of Applied Science	7	14	14	11	11
Pre-Major Dental Assisting					
Associate of Applied Science	7	10	8	4	6
One Year Certificate					2
Two Year Certificate	1	2	2	9	4
Total	8	12	10	13	12
Pre-Major Dental Hygiene					
Associate of Applied Science	70	58	56	53	
Bachelor of Science	59	50	69	70	122
Total	129	108	125	123	122
Pre-Major Diagnostic Medical Sonography					
Associate of Applied Science	12	15	13	26	30
Pre-Major Dietetics					
Bachelor of Science	69	63	51	53	59
Pre-Major Health Science					
Bachelor of Science	159	219	259	240	298
Pre-Major Human Services					
Bachelor of Human Services	4				1
Pre-Major Justice					
Bachelor of Arts	83	122	130	104	117
Pre-Major Legal Studies					
Bachelor of Arts	31	42	27	30	25
Pre-Major Medical Assisting					
Associate of Applied Science	72	61	45	36	28
Pre-Major Medical Laboratory Science					
Bachelor of Science				3	9
Pre-Major Medical Laboratory Technology					
Associate of Applied Science	17	23	20	11	10
Pre-Major Nursing					
Associate of Applied Science	352	335	339	349	304
Pre-Major Nursing Science					
Bachelor of Science	790	756	759	698	663

Headcount Trends by Major, Degree Type, and Campus / College Fall Closing 2014 - 2018

Table 1.05

	2014	2015	2016	2017	2018
Pre-Major Paralegal Studies					
Associate of Applied Science	16	13	13	8	11
Two Year Certificate	5	1	1		
Post-Bachelor Certificate	3	2	2	6	3
Total	24	16	16	14	14
Pre-Major Physical Therapist Assisting					
Associate of Applied Science	6	39	52	56	66
Pre-Major Social Work					
Bachelor of Social Work	108	111	102	97	85
Pre-Major Legal Nurse Consulting Paralegal					
One Year Certificate		1		1	
Pre-Major Radiologic Technology					
Associate of Applied Science	86	111	102	94	92
Pre-Major Surgical Technology					
Associate of Applied Science				13	21
Psychiatric & Mental Health Nurse Practitioner					
Graduate Certificate	1	3	3		
Public Health Practice					
Master of Public Health	75	75	67	75	68
Radiologic Technology					
Associate of Applied Science	23	11	24	35	36
Social Work					
Bachelor of Social Work	27	35	33	32	29
Master of Social Work	51	54	53	51	69
Total	78	89	86	83	98
Social Work Management					
Graduate Certificate	1	2			
Surgical Technology					
Associate of Applied Science				11	11
College of Health Total	3,372	3,422	3,367	3,319	3,317
Community & Technical College					
Advanced Welding					
Occupational Endorsement Certificate		1	5	2	3
Air Traffic Control					
Associate of Applied Science	32	24	28	17	10
Applied Technologies Leadership					
Bachelor of Science			19	47	46
Apprenticeship Technology					
Associate of Applied Science	5	1			
Architectural & Engineering Technology					
Associate of Applied Science	47	38	29	18	12

Headcount Trends by Major, Degree Type, and Campus / College Fall Closing 2014 - 2018

Table 1.05

	2014	2015	2016	2017	2018
Anchorage Campus - Community & Technical College (continued)					
Architectural Drafting					
One Year Certificate	5	2			
Architectural Technology					
One Year Certificate			2	1	
Automotive Technology					
Associate of Applied Science	34	25	32	52	47
Two Year Certificate	10	10	7	3	10
Total	44	35	39	55	57
Automotive - Electrical					
Occupational Endorsement Certificate	1	1			
Aviation Administration					
Associate of Applied Science	46	42	23	19	20
Aviation Maintenance - Airframe					
Two Year Certificate	31	30	28	26	20
Aviation Maintenance - Powerplant					
Two Year Certificate	6	6	7	12	13
Aviation Maintenance Technology					
Associate of Applied Science	34	34	22	20	27
Aviation Technology					
Bachelor of Science	208	188	194	196	210
Brakes, Suspension, Alignment					
Occupational Endorsement Certificate	1	2	1		
CAD for Building Construction					
Occupational Endorsement Certificate	2	3	1		
Career & Technical Education					
Master of Science	6	3			
Cisco Certificate Network Associate					
Occupational Endorsement Certificate	4		1		1
Civil Drafting					
One Year Certificate	1	2			
Civil Technology					
One Year Certificate		1			
Computer & Networking Technology					
Associate of Applied Science	102	105	100	74	64
Two Year Certificate	11	8	4	1	
Total	113	113	104	75	64
Computer Information Office Systems					
Associate of Applied Science	14	7	3	1	

Headcount Trends by Major, Degree Type, and Campus / College Fall Closing 2014 - 2018

Table 1.05

	2014	2015	2016	2017	2018
Construction Management					
Associate of Applied Science	28	26	27	18	20
Bachelor of Science	119	121	111	100	87
Total	147	147	138	118	107
Corporate Specified Skills					
Occupational Endorsement Certificate	1				
Culinary Arts					
Associate of Applied Science	80	74	65	68	54
Diesel Power Technology					
Associate of Applied Science			12	30	35
One Year Certificate			3	2	8
Total			15	32	43
Fitness Leadership					
Occupational Endorsement Certificate	1				
Heavy Duty Transportation & Equipment					
Associate of Applied Science	22	20	15	5	2
Two Year Certificate	5	12	2	2	
Total	27	32	17	7	2
Hospitality Administration					
Bachelor of Arts	83	82	62	63	49
Mechanical & Electrical Technology					
One Year Certificate			1		
Mechanical & Electrical Drafting					
One Year Certificate	4	1			
Nondestructive Testing Technology					
Occupational Endorsement Certificate	6	3	3	1	1
Occupational Safety & Health					
Associate of Applied Science		85	52	46	37
Bachelor of Science				19	34
Total		85	52	65	71
Office Foundations					
Occupational Endorsement Certificate	7	1			
Office Support					
Occupational Endorsement Certificate		1			
Pre-Major Technology					
Bachelor of Science	45	42	21	4	1
Professional Piloting					
Associate of Applied Science	38	46	37	58	36
Retail Management					
One Year Certificate	7	8	4		
Structural Drafting					
One Year Certificate		1			

Headcount Trends by Major, Degree Type, and Campus / College Fall Closing 2014 - 2018

Table 1.05

	2014	2015	2016	2017	2018
Anchorage Campus - Community & Technical College (continued)					
Technical Support					
Occupational Endorsement Certificate	1				
Technology					
Bachelor of Science	48	45	37	10	3
Telecomm Electronics & Computer Technology					
Associate of Applied Science	3				
Vocational Education					
Master of Science	1				
Welding & Non-Destructive Testing Technology					
Associate of Applied Science	58	55	57	43	24
Welding					
Occupational Endorsement Certificate	4	2	4	6	12
Community & Technical College Total	1,161	1,158	1,019	964	886
Anchorage Campus Non-Degree					
Exploratory Major / Undeclared					
Bachelor of Arts	683	569	492	414	341
Non-Degree Seeking					
Non-Degree Seeking	2,827	2,572	2,711	2,657	2,732
Pending Degree Seeking					
Graduate	19	18	17	21	18
Undergraduate	82	122	92	80	83
Total	101	140	109	101	101
Other					
Exchange Student	1	13	11	3	4
Inactivated Program	3	25	22	25	4
Total	4	38	33	28	8
Pre-Graduate					
Non-Degree Seeking	2		1	1	1
Anchorage Campus Non-Degree Total	3,617	3,319	3,346	3,201	3,183
Anchorage Campus Total	15,211	14,781	14,337	13,873	13,266
Kenai Peninsula College					
Computer Electronics					
Associate of Applied Science	4	3	2		
Computer Information Office Systems					
Associate of Applied Science	6	2			

Headcount Trends by Major, Degree Type, and Campus / College Fall Closing 2014 - 2018

Table 1.05

	2014	2015	2016	2017	2018
Corrections					
One Year Certificate	1	5		2	2
Occupational Endorsement Certificate	2	1	1		
Total	3	6	1	2	2
Digital Art					
Associate of Applied Science	11	8	2	1	
General Business					
Associate of Applied Science	51	44	52	43	49
General Program					
Associate of Arts	231	153	163	141	143
Industrial Process Instrumentation					
Associate of Applied Science	49	55	48	38	20
Non-Degree Seeking					
Non-Degree Seeking	456	456	408	440	406
Occupational Safety & Health					
Associate of Applied Science	94	1	1	1	
Office Management & Technology					
Associate of Applied Science	1				
Paramedical Technology					
Associate of Applied Science	15	13	6	5	9
Pending Degree Seeking					
Pending Degree Seeking	13	7	9	4	4
Petroleum Technology					
One Year Certificate	4	3	4	7	3
Two Year Certificate	1	1			
Total	5	4	4	7	3
Pre-Major Paramedical Technology					
Associate of Applied Science	13	15	25	23	22
Pre-Major Process Technology					
Associate of Applied Science		69	69	62	79
Process Technology					
Associate of Applied Science	247	158	89	71	46
Small Business Administration					
Associate of Applied Science		1			
Small Business Management					
One Year Certificate	1				
Welding Technology					
One Year Certificate	24	12	18	13	15
Two Year Certificate	2	1			
Total	26	13	18	13	15
Kenai Peninsula College Total	1,226	1,008	897	851	798

Headcount Trends by Major, Degree Type, and Campus / College Fall Closing 2014 - 2018

Table 1.05

	2014	2015	2016	2017	2018
Kodiak College					
Accounting					
Associate of Applied Science	18	20	21	14	10
Alutiiq Language					
Occupational Endorsement Certificate			3	1	2
Computer Information Office Systems					
Associate of Applied Science	5	5	1		
General Business					
Associate of Applied Science	6	12	14	11	13
General Program					
Associate of Arts	110	102	118	101	70
Non-Degree Seeking					
Non-Degree Seeking	138	146	173	167	124
Office Support					
Occupational Endorsement Certificate		1		1	
Pending Degree Seeking					
Pending Degree Seeking	16	11	11	6	7
Technology					
Associate of Applied Science	9	8	8	8	6
Welding					
One Year Certificate	3	2	1		1
Kodiak College Total	305	307	350	309	233
Matanuska-Susitna College					
Accounting					
Associate of Applied Science	47	38	34	25	32
Bookkeeping Support					
Occupational Endorsement Certificate	1				
Cisco Certificate Network Associate					
Occupational Endorsement Certificate					2
Commercial HVAC Systems					
Occupational Endorsement Certificate	1	1	1		
Commercial Refrigeration					
Occupational Endorsement Certificate		1	1		
Computer Information Office Systems					
Associate of Applied Science	16	13	8	4	1
Computer Systems Technology					
Associate of Applied Science	17	11	27	36	30
General Business					
Associate of Applied Science	45	35	45	46	42
General Program					
Associate of Arts	386	372	344	275	213

Headcount Trends by Major, Degree Type, and Campus / College Fall Closing 2014 - 2018

Table 1.05

	2014	2015	2016	2017	2018
Human Services					
Associate of Applied Science	54	57	48	52	41
Non-Degree Seeking					
Non-Degree Seeking	254	238	265	280	402
Office Foundations					
Occupational Endorsement Certificate		1		8	3
Paramedical Technology					
Associate of Applied Science	17	12	7	16	14
Pending Degree Seeking					
Pending Degree Seeking	3	5		3	1
Pre-Major Paramedical Technology					
Associate of Applied Science	32	24	33	24	16
Refrigeration & Heating Technology					
Associate of Applied Science	12	13	13	17	10
Two Year Certificate	2	3	5	2	5
Total	14	16	18	19	15
Residential Air Conditioning & Refrigeration					
Occupational Endorsement Certificate	1				
Small Business Administration					
Associate of Applied Science	23	16	15	15	13
Sustainable Energy					
Occupational Endorsement Certificate	5	4	1		
Veterinary Assisting					
Occupational Endorsement Certificate	11	4	8	10	23
Matanuska-Susitna College Total	927	848	855	813	848
Prince William Sound College					
Computer Information Office Systems					
Associate of Applied Science	5	3			
Occupational Endorsement Certificate	1				
Total	6	3			
Direct Services Specialist					
Occupational Endorsement Certificate	8	3			
Disability Services					
Associate of Applied Science	19	19	7	4	1
Two Year Certificate	3				
Total	22	19	7	4	1
General Program					
Associate of Arts	61	48	38	29	26
Industrial Technology					
Associate of Applied Science	17	12	8	5	
Two Year Certificate	1	1			
Total	18	13	8	5	

Headcount Trends by Major, Degree Type, and Campus / College Fall Closing 2014 - 2018

Table 1.05

	2014	2015	2016	2017	2018
Prince William Sound College (continued)					
Millwright					
Occupational Endorsement Certificate			3	3	8
Non-Degree Seeking					
Non-Degree Seeking	377	531	462	550	545
Outdoor Leadership					
Associate of Applied Science	8	9	10	10	8
Prince William Sound College Total	500	626	528	601	588
Other UA Programs					
UAF Programs	273	312	540	468	419
UAS Programs	207	234	455	352	378
UAA Total	18,649	18,116	17,962	17,267	16,530

Source: UA Statewide IR DSD data system at semester closing.

Notes:

1. Student distribution in this report is based on primary / home campus where students are officially admitted.
2. Headcount is unduplicated.
3. Students who enrolled in multiple campuses have been counted only once in UAA Total.

Closing Headcount Trend by Campus and Term

Table 1.06

	Anchorage Campus			Kenai Peninsula College			Kodiak College		
	Summer	Fall	Spring	Summer	Fall	Spring	Summer	Fall	Spring
2009 - 10	6,786	15,662	15,397	344	1,983	2,146	183	513	725
2010 - 11	7,295	16,129	15,488	560	2,194	2,427	144	614	806
2011 - 12	7,273	16,205	5,537	807	2,784	2,702	217	755	940
2012 - 13	6,931	15,718	15,268	832	2,550	2,574	232	841	925
2013 - 14	6,682	15,640	14,573	747	2,523	2,613	263	796	968
2014 - 15	6,601	14,754	14,152	800	2,716	2,641	223	793	992
2015 - 16	6,286	14,357	13,576	876	2,485	2,336	250	804	804
2016 - 17	6,092	14,308	12,954	838	2,596	2,565	246	767	777
2017 - 18	6,097	13,702	12,518	898	2,596	2,400	242	762	738
2018 - 19	5,836	13,158	11,928	915	2,476	2,287	265	721	689

	Matanuska-Susitna College			Prince William Sound College			Total UAA		
	Summer	Fall	Spring	Summer	Fall	Spring	Summer	Fall	Spring
2009 - 10	248	1,782	1,798	253	1,286	1,283	7,646	20,368	20,242
2010 - 11	390	1,950	1,840	311	952	1,615	8,374	20,559	20,630
2011 - 12	441	2,134	1,944	518	957	1,731	8,642	20,699	20,879
2012 - 13	419	1,990	1,825	214	753	1,712	8,042	19,825	20,354
2013 - 14	473	1,914	1,822	175	834	1,328	7,711	19,629	19,205
2014 - 15	464	1,844	1,731	199	681	1,809	7,678	18,649	19,064
2015 - 16	506	1,899	1,726	92	779	1,628	7,330	18,116	17,911
2016 - 17	547	1,775	1,547	89	743	1,357	7,135	17,962	16,888
2017 - 17	453	1,682	1,571	98	860	1,453	7,070	17,267	16,362
2018 - 19	393	1,559	1,549	92	895	1,463	6,820	16,530	15,660

Source: UA Statewide IR DSD data system at semester closing.

Notes:

1. Included are students enrolled in credit courses at the 050 level and above, including auditors.
2. Each campus reflects unduplicated student headcount.
3. Students who enrolled in multiple campuses have been counted only once in UAA total.

Undergraduate Applied, Accepted, and Enrolled Students at UAA

Table 1.07

	Fall 2014	Fall 2015	Fall 2016	Fall 2017	Fall 2018
College of Arts & Sciences					
Applied	1,898	2,082	1,874	1,717	1,835
Accepted	1,527	1,508	1,625	1,301	1,543
Enrolled	1,018	1,097	973	941	883
Selectivity	80.5%	72.4%	86.7%	75.8%	84.1%
Yield	66.7%	72.7%	59.9%	72.3%	57.2%
School of Education					
Applied	196	183	217	193	76
Accepted	154	142	188	149	75
Enrolled	106	107	105	103	45
Selectivity	78.6%	77.6%	86.6%	77.2%	98.7%
Yield	68.8%	75.4%	55.9%	69.1%	60.0%
College of Business & Public Policy					
Applied	532	641	618	541	554
Accepted	422	475	500	419	452
Enrolled	278	344	308	295	271
Selectivity	79.3%	74.1%	80.9%	77.4%	81.6%
Yield	65.9%	72.4%	61.6%	70.4%	60.0%
College of Engineering					
Applied	540	597	546	565	543
Accepted	423	448	460	422	456
Enrolled	292	325	280	316	291
Selectivity	78.3%	75.0%	84.2%	74.7%	84.0%
Yield	69.0%	72.5%	60.9%	74.9%	63.8%
College of Health					
Applied	1,494	1,700	1,677	1,578	1,646
Accepted	1,184	1,274	1,429	1,207	1,377
Enrolled	786	833	849	821	808
Selectivity	79.3%	74.9%	85.2%	76.5%	83.7%
Yield	66.4%	65.4%	59.4%	68.0%	58.7%
Community & Technical College					
Applied	640	635	545	478	477
Accepted	475	461	429	377	394
Enrolled	322	318	261	254	226
Selectivity	74.2%	72.6%	78.7%	78.9%	82.6%
Yield	67.8%	69.0%	60.8%	67.4%	57.4%
Anchorage Campus Total					
Applied	5,300	5,838	5,477	5,072	5,131
Accepted	4,185	4,308	4,631	3,875	4,297
Enrolled	2,802	3,024	2,776	2,730	2,524
Selectivity	79.0%	73.8%	84.6%	76.4%	83.7%
Yield	67.0%	70.2%	59.9%	70.5%	58.7%

Undergraduate Applied, Accepted, and Enrolled Students at UAA

Table 1.07

	Fall 2014	Fall 2015	Fall 2016	Fall 2017	Fall 2018
Kenai Peninsula College					
Applied	297	237	211	239	243
Accepted	269	224	199	198	212
Enrolled	226	168	162	139	157
Selectivity	90.6%	94.5%	94.3%	82.8%	87.2%
Yield	84.0%	75.0%	81.4%	70.2%	74.1%
Kodiak College					
Applied	81	103	105	86	76
Accepted	71	78	75	54	36
Enrolled	62	73	64	42	28
Selectivity	87.7%	75.7%	71.4%	62.8%	47.4%
Yield	87.3%	93.6%	85.3%	77.8%	77.8%
Matanuska-Susitna College					
Applied	368	369	340	289	287
Accepted	300	277	289	232	244
Enrolled	248	221	228	183	169
Selectivity	81.5%	75.1%	85.0%	80.3%	85.0%
Yield	82.7%	79.8%	78.9%	78.9%	69.3%
Prince William Sound College					
Applied	75	72	37	35	35
Accepted	57	63	37	19	27
Enrolled	40	31	26	13	19
Selectivity	76.0%	87.5%	100.0%	54.3%	77.1%
Yield	70.2%	49.2%	70.3%	68.4%	70.4%
UAA Total					
Applied	6,121	6,619	6,170	5,721	5,772
Accepted	4,882	4,950	5,231	4,378	4,816
Enrolled	3,378	3,517	3,256	3,107	2,897
Selectivity	79.8%	74.8%	84.8%	76.5%	83.4%
Yield	69.2%	71.1%	62.2%	71.0%	60.2%

Source: UA Statewide IR DSD data system at semester closing.

Notes:

1. Included are applicants to Associate and Baccalaureate degree programs only.
2. An applicant may be counted more than once in the report due to application submissions to multiple programs in a given fall semester.
3. Selectivity = Accepted / Applicants; it shows the percentage of total applications that were accepted into programs.
4. Yield = Enrolled / Accepted; it refers to the percent of total accepted that enrolled in the same fall semester.

Graduate Applied, Accepted, and Enrolled Students at UAA

Table 1.08

	Fall 2014	Fall 2015	Fall 2016	Fall 2017	Fall 2018
College of Arts & Sciences					
Applied	134	141	127	100	141
Accepted	43	53	37	32	55
Enrolled	37	38	31	28	50
Selectivity	32.1%	37.6%	29.1%	32.0%	39.0%
Yield	86.0%	71.7%	83.8%	87.5%	90.9%
School of Education					
Applied	41	52	41	43	6
Accepted	16	31	22	25	6
Enrolled	10	29	18	21	4
Selectivity	39.0%	59.6%	53.7%	58.1%	100.0%
Yield	62.5%	93.5%	81.8%	84.0%	66.7%
College of Business & Public Policy					
Applied	92	95	70	91	88
Accepted	51	54	38	51	53
Enrolled	41	40	28	33	44
Selectivity	55.4%	56.8%	54.3%	56.0%	60.2%
Yield	80.4%	74.1%	73.7%	64.7%	83.0%
College of Engineering					
Applied	64	61	61	48	33
Accepted	37	33	46	33	23
Enrolled	30	17	32	22	20
Selectivity	57.8%	54.1%	75.4%	68.8%	69.7%
Yield	81.1%	51.5%	69.6%	66.7%	87.0%
College of Health					
Applied	78	77	76	51	69
Accepted	35	27	24	8	37
Enrolled	23	19	16	8	27
Selectivity	44.9%	35.1%	31.6%	15.7%	53.6%
Yield	65.7%	70.4%	66.7%	100.0%	73.0%
Community & Technical College					
Applied	1				
UAA Total					
Applied	410	426	375	333	337
Accepted	182	198	167	149	174
Enrolled	141	143	125	112	145
Selectivity	44.4%	46.5%	44.5%	44.7%	51.6%
Yield	77.5%	72.2%	74.9%	75.2%	83.3%

Source: UA Statewide IR DSD data system at semester closing.

Notes:

1. Included are applicants to Master's and PhD degree programs only.
2. An applicant may be counted more than once in the report due to application submissions to multiple programs in a given fall semester.
3. Selectivity = Accepted / Applicants; it shows the percentage of total applications that were accepted into programs.
4. Yield = Enrolled / Accepted; it refers to the percent of total accepted that enrolled in the same fall semester.

Enrollment



Student Credit Hours by Discipline within Campus / College

Fall Semesters 2014 - 2018

Table 2.01

	Fall 2014	Fall 2015	Fall 2016	Fall 2017	Fall 2018
Anchorage Campus					
College of Arts & Sciences					
Alaska Native Studies	393	373	552	591	628
American Sign Language	744	620	516	576	604
Anthropology	2,166	2,143	2,138	1,854	1,299
Art	2,308	2,490	2,236	2,431	2,301
Astronomy	464	471	474	451	467
Biology	6,836	7,569	7,288	7,375	6,710
Chemistry	3,725	3,547	3,531	3,336	3,034
Chinese	235	200	180	152	100
Communication	6				
Creative Writing & Literary Arts	195	195	188	160	140
Dance	620	555	483	473	301
English	6,995	6,834	6,751	1,609	1,522
Environmental Studies	378	296	365	405	397
French	624	534	468	398	386
Geography	429	429	381	342	324
Geology	1,664	1,765	1,710	1,811	1,703
German	512	441	442	360	382
History	2,973	2,781	3,000	3,058	2,508
Humanities	87				
Interdisciplinary Studies	234	132	132	96	192
International Studies	85	63	60	36	48
Japanese	769	698	516	588	494
Journalism & Public Communication	778	784	694	676	757
Liberal Studies: Integrated Core	87				
Liberal Studies: Integrated Science	395				
Linguistics	255	207	189	174	135
Mathematics	5,863	3,270	2,754	2,750	2,600
Microbiology				33	27
Music	2,432	2,619	2,255	2,274	2,140
National Student Exchange	393	217	172	138	40
Philosophy	2,438	2,160	2,145	1,914	1,869
Physics	2,327	2,337	1,774	1,747	1,551
Political Science	1,038	873	873	891	1,032
Psychology	6,033	5,899	5,518	5,121	5,138
Russian	324	180	196	212	112
Sociology	1,267	1,288	1,179	1,350	1,263
Spanish	1,449	1,216	1,199	1,102	943
Statistics	505	528	442	467	503
Theater	762	636	783	784	878
Women's Studies	255	201	120	141	165

Student Credit Hours by Discipline within Campus / College Fall Semesters 2014 - 2018

Table 2.01

	Fall 2014	Fall 2015	Fall 2016	Fall 2017	Fall 2018
Anchorage Campus - College of Arts & Sciences (continued)					
School of Education (SOE)					
SOE: Counselor Education	171	252	78	28	
SOE: Early Childhood	1,042	997	930	864	658
SOE: Early Childhood Development		59	91		37
SOE: Development & Leadership	641	780	651	495	820
SOE: Education	1,271	1,072	2,059	2,171	2,270
SOE: Educational Technology		3			
SOE: Elementary Education	526	434	468	606	637
SOE: Engaged Leadership			27		
SOE: Foundations	530	752	698	786	607
SOE: Physical Education		40	47	51	110
SOE: Research	130	108	75	75	78
SOE: Secondary Education	179	168	231	189	225
SOE: Special Education	942	754	637	648	658
SOE: Speech Language Pathology	159	252	273	222	268
SOE: Teaching and Learning		69	54	76	95
School of Education Total	5,591	5,740	6,319	6,211	6,463
College of Arts & Sciences Total	64,634	60,291	58,023	52,087	49,156
College of Business & Public Policy					
Accounting	2,736	2,796	2,430	2,385	2,208
Business Administration	5,294	5,245	5,597	5,842	5,969
Computer Information Systems	2,160	2,226	1,965	1,887	1,539
Economics	2,271	2,449	2,079	1,998	1,995
Logistics	222	285	156	99	192
Logistics Operations	246	264	258	153	141
Public Administration	226	222	198	162	237
College of Business & Public Policy Total	13,155	13,487	12,683	12,526	12,281
College of Engineering					
Applied Environmental Science & Technology	101	85	17	1	
Arctic Engineering		177	186	174	171
Civil Engineering	801	627	845	883	911
Computer Science & Computer Engineering	990	1,117	1,252	1,503	1,488
Computer Science	333	222	201	177	42
Computer Systems Engineering	114	99	63	78	66
Electrical Engineering	724	776	744	786	662
Engineering	608	550	509	544	424
Engineering & Science Management	300	303	294	234	132
Engineering Science	1,247	1,233	1,240	1,362	1,069
Geographic Information Systems	144	228	276	318	240
Geomatics	285	386	524	427	484

Student Credit Hours by Discipline within Campus / College Fall Semesters 2014 - 2018

Table 2.01

	Fall 2014	Fall 2015	Fall 2016	Fall 2017	Fall 2018
Mechanical Engineering	497	917	982	1,164	1,264
Project Management	405	411	336	240	171
College of Engineering Total	6,549	7,131	7,469	7,891	7,124
College of Health					
Biomedical Program - WWAMI	520	36	39	5	5
COH Interprofessional		21	21	9	39
Civic Engagement & Learning	120	153	153	180	147
Dental Assisting	334	308	313	312	185
Dental Hygiene	381	375	422	392	212
Diagnostic Medical Sonography	57	106	99	126	129
Dietetics & Nutrition	1,126	1,119	1,022	1,000	1,090
Disability & Long-Term Support	49	43	6	9	57
Emergency Medical Technology	420	366	294	315	242
Fire Science	316	366	329	295	249
Health	36	36			
Health Care Assisting	112	152	184	176	
Health Science	1,262	721	1,011	1,278	1,603
Human Services	1,174	1,261	945	810	738
Justice	1,710	1,568	1,323	1,281	1,305
Legal Nurse Consultant		2	5		
Legal Studies	522	561	525	687	570
Medical Assisting	845	887	952	787	702
Medical Laboratory Technology	648	658	780	705	685
Medicine Doctorate		357	718	700	700
Nursing	2,107	2,201	2,145	2,014	2,131
Nursing Doctorate		96	178	169	38
Nursing Science	2,962	2,708	2,772	3,024	3,203
Nursing Science Graduate					262
Pharmacy Technology	210	201	171	168	159
Physical Education & Recreation	718	604	495	442	463
Physical Education Professional	738	884	969	1,054	938
Physical Education	16	9		16	
Physical Therapist Assistant		127	135	144	144
Radiologic Technology	437	454	555	552	535
Social Work	1,482	1,609	1,424	1,232	1,375
Surgical Technology				144	144
College of Health Total	18,302	17,988	17,985	18,026	18,050
Community & Technical College					
Aerospace Science ROTC	84	74	107	137	136
Air Traffic Control	356	275	291	320	211
Architect Engineering Technology	545	425	573	500	388

Student Credit Hours by Discipline within Campus / College Fall Semesters 2014 - 2018

Table 2.01

	Fall 2014	Fall 2015	Fall 2016	Fall 2017	Fall 2018
Anchorage Campus - Community & Technical College (continued)					
Auto / Diesel Technology	747	706	705	834	891
Aviation Maintenance Technology	1,182	1,204	1,004	980	1,037
Aviation Tech / Admin / Mgmt	1,209	1,056	1,023	1,143	1,047
Aviation Tech / Professional Piloting	486	444	453	607	396
Career & Technical Education	29	32	36	16	9
Communication	2,487	2,337	2,469	2,403	1,914
Computer & Networking Technology	1,175	1,000	852	728	617
Computer Information & Office Systems	242	126	68		
Construction Management	707	691	450	417	366
Counseling	27	53	148	20	81
Culinary Arts	596	545	643	544	426
English as a Second Language	534	393	324		
Guidance	873	834	699	576	
Hospitality Administration					54
Library Science	83	21	23	11	1
Mathematics	4,234	6,492	6,506	5,746	5,326
Military Science	128	87	95	76	77
Occupational Safety & Health		634	493	430	411
Physical Education & Recreation	26				
Physical Education Professional	6				
Preparatory English	2,498	2,003	1,924	241	48
Statistics	486	489	399	426	477
Technology	153	179	177	144	201
University Studies					510
Welding Technology	775	650	708	577	350
Writing				6,180	6,179
Community & Technical College Total	19,668	20,750	20,170	23,056	21,153
Honors College					
Complex Systems	42	9	18	15	
Honors	249	274	334	213	168
Undergraduate Research & Scholarship			36		
Honors College Total	291	283	388	228	168
Chugiak - Eagle River					
Accounting	165	69	51		81
American Sign Language	96	64	132	116	104
Anthropology	330	234	177	135	108
Art	177	147	255	132	120
Biology	288	180	201	159	114
Business Administration	243	261	267	240	171
Chemistry	153	177	105	75	45
Communication	483	444	375	393	381
Computer Information & Office Systems	46	7			
Computer Information Systems	150	96	66	36	51

Student Credit Hours by Discipline within Campus / College Fall Semesters 2014 - 2018

Table 2.01

	Fall 2014	Fall 2015	Fall 2016	Fall 2017	Fall 2018
Construction Management	36				
Dietetics & Nutrition	75	66			
Economics	192	186	189	231	195
English	1,371	771	993	72	57
Environmental Studies					69
Geography	96	117	117	90	66
Geology	159	265	186	106	96
Guidance		231	303	438	219
History	543	249	327	333	336
Human Services		27			
Justice	12	42	9	6	6
Mathematics	1,073	969	1,109	1,030	625
Medical Assisting		45	57	48	39
Music	51	63	36	51	84
Philosophy	216	339	324	129	168
Political Science	81	93	120	135	111
Preparatory English	51				
Psychology	255	243	264	219	216
Spanish	92	100	96		88
Statistics	195	207	168	183	243
Writing				951	585
Chugiak - Eagle River Total	6,629	5,692	5,927	5,308	4,378
Military Programs					
Anthropology	33	96	93		
Art	36	123	84		
Biology	83	36	128		
Chemistry	24	33	24	45	27
Communication	129	144	90	60	24
English	159	450	309		
History	165	297	171	54	54
Mathematics	257	261	168	169	93
Music	39	27	18	24	
Philosophy	66	135	192		
Political Science	15	45			
Preparatory English	36	33			
Psychology	84	132	99	69	45
Spanish	32	52	32		
Technology	84	51			
Writing					33
Military Programs Total	1,242	1,915	1,408	421	276
Anchorage Campus Total	130,469	127,536	124,052	119,543	112,586

Student Credit Hours by Discipline within Campus / College Fall Semesters 2014 - 2018

Table 2.01

	Fall 2014	Fall 2015	Fall 2016	Fall 2017	Fall 2018
Kenai Peninsula College					
Anchorage Extension Site					
Electronics Technology	40	60	45		
Occupational Safety & Health	799				
Petroleum Technology			39		
Physics			15		
Process Technology	598	624	410	227	
Technology	3	3		3	
Total	1,440	687	509	230	
Kachemak Bay Campus					
Alaska Native Studies	4				
American Sign Language	20	16			
Anthropology	141	105			
Art	201	241	89	72	137
Astronomy					24
Biology	338	221	268	313	463
Business Administration	177	84	123	90	102
Chemistry	73	116	130	114	105
Communication	174	99	93	102	57
Community Education		12			
Computer Information & Office Systems	24				
Computer Science	63				39
Creative Writing & Literary Arts			27		
Dietetics & Nutrition	144	141	165	222	273
Education	10	8	7		
Education: Early Childhood		48			
Education: Elementary Education	12				
Economics	18	21			
Emergency Medical Technology	72	45			
English	222	263	380	215	177
Fire Science			24	12	
French			12		
Geology	4	4	10	39	49
Health Care Assisting	60	42	60	60	60
Health Science	60	75	90	93	30
History	36	126	213	360	387
Human Services	129	159	186	162	138
Humanities	18		93	87	93
Japanese	20				
Justice	105	111	150	99	69

Student Credit Hours by Discipline within Campus / College Fall Semesters 2014 - 2018

Table 2.01

	Fall 2014	Fall 2015	Fall 2016	Fall 2017	Fall 2018
Library Science	2				
Mathematics	220	241	332	388	403
Medical Assisting	30	15	18		
Physical Education & Recreation	23	3		10	
Physics		15		6	6
Political Science	42	36	69	36	30
Preparatory English	45	30			
Process Technology	6	6		3	
Psychology	209	255	208	378	261
Social Work	36	27			
Sociology	60				
Statistics			28		28
Theater	48	54		30	
Welding Technology	48	40	36	44	28
Writing				252	201
Total	2,894	2,659	2,811	3,187	3,160
Kenai River Campus					
Accounting	186	177	204	252	306
Alaska Native Studies	89	97	116	124	85
American Sign Language		32			
Anthropology	216	216	158	194	273
Art	390	288	270	264	228
Astronomy				50	40
Biology	425	385	406	571	421
Business Administration	270	210	321	258	231
Chemistry	703	626	639	544	595
Communication	522	486	465	378	426
Community Education	16			4	9
Computer & Networking Technology	44				
Computer Information & Office Systems		8		2	2
Computer Information Systems	213	240	225	141	126
Computer Science	42	117	51		
Dietetics & Nutrition	132	78	63		
Education	149	174	46	370	123
Education: Early Childhood	129	134	122	125	90
Education: Elementary Education	12	15	10	29	
Education: Foundations			78	87	111
Economics	39	42			48
Electronics Technology	153	206	280	171	61
Emergency Medical Technology	72	78	168	82	120
English	1,314	909	1,056	195	81
Environmental Studies	48	85	58	35	25

Student Credit Hours by Discipline within Campus / College Fall Semesters 2014 - 2018

Table 2.01

	Fall 2014	Fall 2015	Fall 2016	Fall 2017	Fall 2018
Kenai Peninsula College - Kenai River Campus (continued)					
Fire Science	69	153			
French	44	40	28		
Geology	44		90	87	93
Guidance	12	27	51	36	
Health Care Assisting	60	60		60	48
History	261	162	156	201	117
Human Services	105	15	18	63	54
Humanities	21				
Japanese	60	28	72	40	44
Justice	99	66	60	63	51
Library Science	9	14	10	5	9
Logistics Operations	48	39	48	24	33
Mathematics	2,069	2,051	2,583	2,173	2,146
Medical Assisting	33	30	30		
Music	93	93	105	81	102
Occupational Safety & Health		36			
Paramedical Technology	180	168	108	144	144
Petroleum Technology	184	166	126	108	69
Philosophy	30		51		129
Physical Education & Recreation	9	10			
Physics	304	357	194	183	157
Political Science	21	9	3	30	30
Preparatory English	80	210	240		
Process Technology	1,042	959	768	698	868
Psychology	387	397	317	295	279
Russian	36				
Social Work		6			
Sociology	150	72	114	114	72
Spanish	112	52	44	56	32
Statistics	317	341	263	297	318
University Studies					21
Welding Technology	200	128	180	148	176
Women's Studies	39				
Writing				939	1,074
Total	11,282	10,292	10,395	9,721	9,467

Student Credit Hours by Discipline within Campus / College Fall Semesters 2014 - 2018

Table 2.01

	Fall 2014	Fall 2015	Fall 2016	Fall 2017	Fall 2018
Resurrection Bay Extension Site					
English	33	21	15		
Mathematics	36	27	27	30	
Philosophy			21		
Physical Education & Recreation	13	9			
Political Science	36	36		54	18
Writing				21	18
Total	118	93	63	105	36
Kenai Peninsula College Total	15,734	13,731	13,778	13,243	12,663
Kodiak College					
Accounting	114	189	255	180	216
Alaska Native Studies	43	56	188	108	109
Anthropology	111	114	132	183	123
Architectural & Engineering Technology	36		54	54	18
Art	111	59	36	102	105
Auto / Diesel Technology				54	
Aviation Tech / Professional Piloting				42	27
Biology	363	397	353	450	467
Business Administration	249	261	228	258	282
Chemistry	60	67	95		70
Civic Engagement & Learning				45	
Communication	72	69	69	60	48
Computer Information & Office Systems	189	105	35	33	19
Computer Information Systems	186	96	78	69	60
Construction Management	16		32		
Education	5	13	29		
Education: Early Childhood	135	102	75	51	102
Education: Elementary Education	16	38	41	36	51
Education: Foundations			51	27	24
Education: Special Education	48	96	51	48	45
Economics	42	54	51	57	66
Electronics Technology		44			28
English	321	423	360	117	30
Environmental Studies	38				
Guidance	54	39	27		
History	24	54	18	48	36
Human Services	27				
Humanities	33	45	45	39	24
Justice		42			21

Student Credit Hours by Discipline within Campus / College Fall Semesters 2014 - 2018

Table 2.01

	Fall 2014	Fall 2015	Fall 2016	Fall 2017	Fall 2018
Kodiak College (continued)					
Liberal Studies: Integrated Core	45	27			
Liberal Studies: Integrated Science	40			45	
Mathematics	273	246	261	159	93
Medical Assisting	101	92	94	102	114
Music	24	39		12	
Occupational Safety & Health	53	59	3		
Philosophy	33	21	36	30	18
Physical Education & Recreation	15	14	15	8	12
Preparatory English	111	114	114		
Psychology	158	100	96	154	111
Russian				56	
Social Work	36				
Sociology	114	153	162	147	108
Spanish			12	32	56
Statistics	42	30	18	15	30
Technology	1	4	4		
University Studies					24
Welding Technology	76	66	342	279	177
Writing				300	330
Kodiak College Total	3,415	3,328	3,460	3,400	3,044
Matanuska-Susitna College					
Accounting	372	294	276	285	252
American Sign Language	196	184	184	64	184
Anthropology	447	585	546	417	411
Art	579	561	564	474	417
Auto / Diesel Technology					3
Biology	936	983	980	1,018	910
Business Administration	591	657	675	600	423
Chemistry	440	424	435	446	436
Communication	396	342	339	345	261
Computer & Networking Technology	369	349	352	307	345
Computer Information & Office Systems	573	245	173	207	114
Computer Information Systems	105	105	135	153	120
Computer Science	39	12			
Culinary Arts					2
Dance		14			
Dietetics & Nutrition	36	42	57	33	18
Economics	171	270	177	261	150
Education: Early Childhood	96	54	48		
Education: Elementary Education	34	122	48		
Education: Foundations	70	51	42		

Student Credit Hours by Discipline within Campus / College Fall Semesters 2014 - 2018

Table 2.01

	Fall 2014	Fall 2015	Fall 2016	Fall 2017	Fall 2018
Emergency Medical Technology	156	180	286	184	198
Engineering	32	53	59		
Engineering Science		45	30		
English	1,056	1,050	855	72	
Environmental Studies				67	48
Fire Science					12
French	64	48	24	40	32
Geography			78	150	123
Geology	57		71		
Health Care Assisting					102
Health Science			72	45	63
History	720	870	717	807	678
Human Services	258	279	201	165	126
Humanities	42	54			
Interior Design	24				
International Studies			15	12	6
Japanese	104	100	64	72	76
Justice	96	81	69	84	99
Liberal Studies: Integrated Science	45				
Liberal Studies: Social Science	30	12			
Logistics Operations	42	24			54
Mathematics	1,643	1,605	1,636	1,891	1,560
Medical Assisting	108	99	147	135	192
Music	63	144	138	162	186
Paramedical Technology	216	180	108	204	180
Pharmacy Technology					54
Philosophy	345	255	219	336	282
Physical Education & Recreation				18	19
Physics	194	176	205	92	159
Political Science	30	45	21	234	216
Preparatory English	498	396	381	57	
Psychology	576	498	450	510	360
Refrigeration & Heating	222	319	320	291	224
Renewable Energy	63	53	32		
Russian	40	52	28	28	32
Social Work	24	15			
Sociology	84	198	186	147	120
Spanish	148	124	112	204	180
Statistics	87	93	141	177	156
Theater	48	102	69	63	60
Veterinary Assisting	78	50	137	151	250
Women's Studies				39	12
Writing				1,389	1,251
Matanuska-Susitna College Total	12,643	12,494	11,902	12,436	11,156

Student Credit Hours by Discipline within Campus / College Fall Semesters 2014 - 2018

Table 2.01

	Fall 2014	Fall 2015	Fall 2016	Fall 2017	Fall 2018
Prince William Sound College					
Accounting	18				
Anthropology	30	42			87
Art	24	15			7
Astronomy	40		77	86	80
Biology	24	48	78	64	25
Business Administration	27	15	27		39
Chemistry	54		5		
Communication	78	57	69	54	63
Computer Information & Office Systems	29	52	6		6
Computer Information Systems			30	18	9
Computer Science				24	24
Dietetics & Nutrition	54	39			
Education	5	21	14	23	1
Education: Development & Leadership		24			
Emergency Medical Technology		84	48		15
English	216	162	171		18
Environmental Studies				28	19
Film	18	15	18	18	
Geology	76	109	113	90	85
Guidance	42	27	24	21	
Health Science	16				
History	60	57	90	132	72
Human Services	145	64		12	
Humanities	15	42	30	48	39
Industrial Technology	300	249	613	660	723
Justice	27	21			30
Liberal Studies: Social Science	24				
Marine Technology	302	493			
Mathematics	207	152	161	159	326
Medical Assisting	87	63	102	117	111
Music	33	36	21	30	36
Occupational Safety & Health			15	147	96
Outdoor Studies	66	102			
Physical Education & Recreation	24	19	87	84	74
Physical Education Professional			21	41	64
Physics				18	27
Political Science	39	75	39		42
Psychology	123	33	126	66	30
Sociology	75				

Student Credit Hours by Discipline within Campus / College Fall Semesters 2014 - 2018

Table 2.01

	Fall 2014	Fall 2015	Fall 2016	Fall 2017	Fall 2018
Spanish		44			
Statistics	45	30			
Theater	15		30	12	24
University Studies					21
Writing				153	228
Total	2,338	2,189	2,015	2,105	2,421
Copper Basin Extension Center					
Art	174	54	42	72	45
Biology					56
Computer Information & Office Systems				15	
Education			28		18
Emergency Medical Technology					21
English		15			
Health Care Assisting			36		
History			21		
Mathematics		33	44		
Music		54	39	27	48
Political Science			33	33	
Sociology		69	51	60	15
Spanish	148	84	64	56	36
Total	322	309	358	263	239
Cordova Extension Center					
Biology		8			
Computer Information & Office Systems		12			
Education		36			
English	15	45	33		
History		33	6	57	
Mathematics	28	28	20	32	32
Political Science			15		45
Writing				30	
Total	43	162	74	119	77
Prince William Sound College Total	2,703	2,660	2,447	2,487	2,737
UAA Total	164,964	159,749	155,639	151,109	142,186

Source: Statewide IR DSD data system at semester closing freeze.

Notes:

1. Student credit hours are based on course level, representing credit courses at the 050 level and above, and do not include auditors.
2. Totals may not equal the sum of all categories due to rounding.
3. Course prefix change made to Writing reduced number of credit hours originally reported in English.

Student Credit Hour Trend by Semester and Campus, Academic Years 2000 - 2019

Table 2.02

Year	Anchorage Campus					Kenai Peninsula College					Kodiak College				
	Summer	Fall	Spring	Annual	% +/- over Prev Year	Summer	Fall	Spring	Annual	% +/- over Prev Year	Summer	Fall	Spring	Annual	% +/- over Prev Year
1999 - 00	25,275	104,154	96,451	225,880		426	7,943	8,183	16,552		135	2,168	2,241	4,544	
2000 - 01	22,478	103,783	98,054	224,315	-1%	607	8,602	9,084	18,293	11%	65	2,909	2,862	5,836	28%
2001 - 02	23,762	106,149	102,242	232,153	4%	760	9,712	9,362	19,834	8%	153	2,998	3,095	6,246	7%
2002 - 03	23,133	112,999	109,799	245,930	6%	359	9,274	9,065	18,698	-6%	115	3,080	3,622	6,817	9%
2003 - 04	27,493	119,871	116,406	263,769	7%	727	9,509	8,396	18,632	0%	137	2,935	3,120	6,192	-9%
2004 - 05	29,718	124,891	117,540	272,148	3%	489	8,958	8,904	18,351	-2%	101	2,406	2,529	5,036	-19%
2005 - 06	29,397	127,294	120,947	277,638	2%	567	9,277	8,972	18,816	3%	157	2,215	2,639	5,011	-1%
2006 - 07	29,102	129,625	120,528	279,254	1%	782	9,883	9,230	19,895	6%	37	2,220	2,442	4,699	-6%
2007 - 08	28,575	129,803	121,429	279,807	0%	885	9,567	9,708	20,160	1%	141	2,345	2,957	5,443	16%
2008 - 09	30,409	131,305	123,090	284,803	2%	1,228	10,137	10,707	22,072	10%	188	2,387	2,696	5,271	-3%
2009 - 10	31,438	135,284	128,769	295,490	4%	1,326	12,270	12,901	26,497	20%	466	2,027	3,000	5,493	4%
2010 - 11	33,916	138,504	130,713	303,132	3%	2,116	13,141	13,815	29,072	10%	400	2,555	3,652	6,607	20%
2011 - 12	33,418	139,882	132,334	305,633	1%	3,040	15,403	15,301	33,744	16%	648	3,276	4,134	8,058	22%
2012 - 13	32,196	137,666	130,075	299,937	-2%	3,237	14,859	14,755	32,851	-3%	733	3,653	3,876	8,262	3%
2013 - 14	31,078	135,749	124,372	291,199	-3%	2,792	14,695	14,840	32,327	-2%	784	3,533	4,293	8,610	4%
2014 - 15	29,491	130,469	122,128	282,088	-3%	3,030	15,734	14,823	33,587	4%	699	3,415	4,201	8,315	-3%
2015 - 16	28,408	127,536	118,447	274,390	-3%	3,417	13,731	12,487	29,635	-12%	794	3,328	3,471	7,593	-9%
2016 - 17	27,244	124,052	112,844	264,140	-4%	3,164	13,778	12,937	29,879	1%	799	3,460	3,412	7,671	1%
2017 - 18	26,710	119,543	107,312	253,565	-4%	3,220	13,243	11,937	28,400	-5%	844	3,400	3,146	7,390	-4%
2018 - 19	26,249	112,586	100,971	239,805	-5%	3,386	12,663	11,157	27,206	-4%	806	3,044	2,770	6,620	-10%

Student Credit Hour Trend by Semester and Campus, Academic Years 2000 - 2019

Table 2.02

Year	Matanuska-Susitna College					Prince William Sound College					Total UAA				
	Summer	Fall	Spring	Annual	% +/- over Prev Year	Summer	Fall	Spring	Annual	% +/- over Prev Year	Summer	Fall	Spring	Annual	% +/- over Prev Year
1999 - 00	1,295	8,853	9,935	20,083		760	4,103	4,013	8,875		28,472	128,644	122,331	279,447	
2000 - 01	1,024	9,102	8,735	18,861	-6%	935	3,887	4,355	9,177	3%	25,559	130,199	124,875	280,633	0%
2001 - 02	920	9,614	10,033	20,567	9%	897	3,785	4,472	9,153	0%	27,183	133,997	130,946	292,125	4%
2002 - 03	1,541	10,445	11,036	23,022	12%	988	4,709	4,766	10,463	14%	26,651	142,393	140,069	309,113	6%
2003 - 04	1,395	11,335	10,696	23,426	2%	1,132	4,417	5,736	11,284	8%	31,545	149,632	145,849	327,026	6%
2004 - 05	690	10,099	9,379	20,168	-14%	657	4,384	5,112	10,153	-10%	32,020	152,121	144,454	328,596	1%
2005 - 06	569	10,579	9,493	20,641	2%	913	3,911	4,719	9,542	-6%	32,056	153,276	146,770	332,101	1%
2006 - 07	592	10,323	9,246	20,161	-2%	937	4,454	4,986	10,378	9%	31,450	156,505	146,432	334,386	1%
2007 - 08	567	10,461	9,870	20,898	4%	1,258	3,805	4,324	9,388	-10%	31,426	155,981	148,288	335,695	0%
2008 - 09	841	10,699	9,936	21,476	3%	418	3,696	3,050	7,164	-24%	33,083	158,224	149,478	340,786	2%
2009 - 10	977	12,271	11,985	25,233	18%	484	4,187	3,757	8,428	18%	34,691	166,038	160,412	361,141	6%
2010 - 11	1,778	13,609	12,751	28,138	12%	642	3,441	4,441	8,524	1%	38,852	171,249	165,372	375,473	4%
2011 - 12	1,847	14,711	13,421	29,979	7%	1,091	3,754	4,279	9,122	7%	40,043	177,025	169,469	386,536	3%
2012 - 13	1,912	14,228	12,361	28,501	-5%	552	3,340	4,270	8,162	-11%	38,630	173,746	165,337	377,712	-2%
2013 - 14	2,084	13,366	12,407	27,857	-2%	345	2,993	3,839	7,177	-12%	37,083	170,336	159,751	367,170	-3%
2014 - 15	2,112	12,643	11,225	25,980	-7%	434	2,703	4,293	7,430	4%	35,766	164,964	156,670	357,400	-3%
2015 - 16	2,122	12,494	11,358	25,974	0%	273	2,660	3,591	6,524	-12%	35,014	159,749	149,354	344,116	-4%
2016 - 17	2,455	11,902	10,222	24,579	-5%	238	2,447	3,428	6,113	-6%	33,900	155,639	142,843	332,382	-3%
2017 - 18	2,010	12,436	10,673	25,119	2%	328	2,487	3,569	6,384	4%	33,112	151,109	136,637	320,857	-3%
2018 - 19	1,741	11,156	10,652	23,549	-6%	261	2,737	3,681	6,679	5%	32,443	142,186	129,231	303,859	-5%

Source: Statewide IR DSD data system at semester closing freeze.

Notes:

1. Student Credit Hours are based on credit courses at the 050 course level and above, and do not include auditors.
2. Prior to AY 2005, Total UAA includes SCH generated by Northern Military Programs.

e-Learning: Origin of Courses vs. Origin of Students Admitted, Academic Years 2015 - 2019

Table 2.03

Campus that Provides Distance Courses	Matriculation Campus																				
	Headcount					Enrollment (Seat Count)							Student Credit Hours								
	Anchorage	Kenai	Kodiak	Mat-Su	PWSC	Non UAA	TOTAL	Anchorage	Kenai	Kodiak	Mat-Su	PWSC	Non UAA	TOTAL	Anchorage	Kenai	Kodiak	Mat-Su	PWSC	Non UAA	TOTAL
Anchorage Campus																					
2014 - 2015	8,204	128	34	139	14	339	8,825	16,266	178	50	239	17	412	17,162	46,933	503	137	699	45	1,085	49,402
2015 - 2016	8,661	109	34	172	12	336	9,287	17,900	129	46	258	20	424	18,777	52,286	386	136	763	58	1,151	54,780
2016 - 2017	8,737	117	37	167	14	380	9,418	19,420	168	42	254	19	465	20,368	57,027	502	116	751	57	1,216	59,669
2017 - 2018	9,483	154	39	158	23	594	10,418	21,513	226	53	270	33	704	22,799	62,665	498	141	805	80	1,609	65,798
2018 - 2019	10,144	134	44	169	24	618	11,105	23,488	194	75	282	31	798	24,868	68,501	526	216	836	88	1,839	72,006
Kenai Peninsula College																					
2014 - 2015	2,246	844	53	135	9	137	3,398	3,665	1,999	75	221	12	172	6,144	11,086	5,980	228	665	36	526	18,521
2015 - 2016	2,300	757	46	131	12	191	3,385	3,755	1,712	77	200	17	226	5,987	11,310	4,941	227	605	51	745	17,879
2016 - 2017	2,437	656	51	178	15	398	3,690	3,996	1,561	78	279	18	513	6,445	11,889	4,503	231	821	56	1,765	19,265
2017 - 2018	2,644	616	39	149	17	247	3,679	4,436	1,516	79	246	33	326	6,636	13,118	4,362	239	726	91	1,065	19,601
2018 - 2019	2,582	658	36	143	15	268	3,673	4,455	1,564	61	221	22	356	6,679	13,013	4,517	170	653	66	1,067	19,486
Kodiak College																					
2014 - 2015	889	55	177	49	3	42	1,207	1,310	80	350	77	4	47	1,868	3,555	220	885	203	10	122	4,995
2015 - 2016	848	32	214	46	9	57	1,202	1,269	41	424	69	10	72	1,885	3,447	118	1,113	189	24	189	5,080
2016 - 2017	808	38	216	94	8	63	1,215	1,171	50	450	127	10	81	1,889	3,189	143	1,302	327	32	219	5,212
2017 - 2018	850	35	208	61	4	63	1,214	1,259	49	467	85	6	100	1,966	3,399	133	1,329	227	18	243	5,349
2018 - 2019	868	46	137	68	7	58	1,170	1,241	70	289	86	7	93	1,786	3,350	186	799	249	19	224	4,827
Matanuska-Susitna College																					
2014 - 2015	870	20	6	359	4	27	1,281	1,135	23	6	595	5	29	1,793	3,236	63	16	1,523	13	83	4,934
2015 - 2016	911	24	9	358	3	39	1,331	1,216	41	15	588	3	49	1,912	3,585	102	40	1,621	9	131	5,488
2016 - 2017	789	18	8	360	7	34	1,211	991	21	12	614	7	42	1,687	2,892	55	29	1,606	21	109	4,712
2017 - 2018	722	11	5	374	2	29	1,141	935	14	5	670	2	32	1,658	2,757	42	13	1,721	6	101	4,640
2018 - 2019	656	13	4	352	1	22	1,037	809	17	6	544	2	27	1,405	2,424	49	17	1,587	6	74	4,157

e-Learning: Origin of Courses vs. Origin of Students Admitted, Academic Years 2015 - 2019

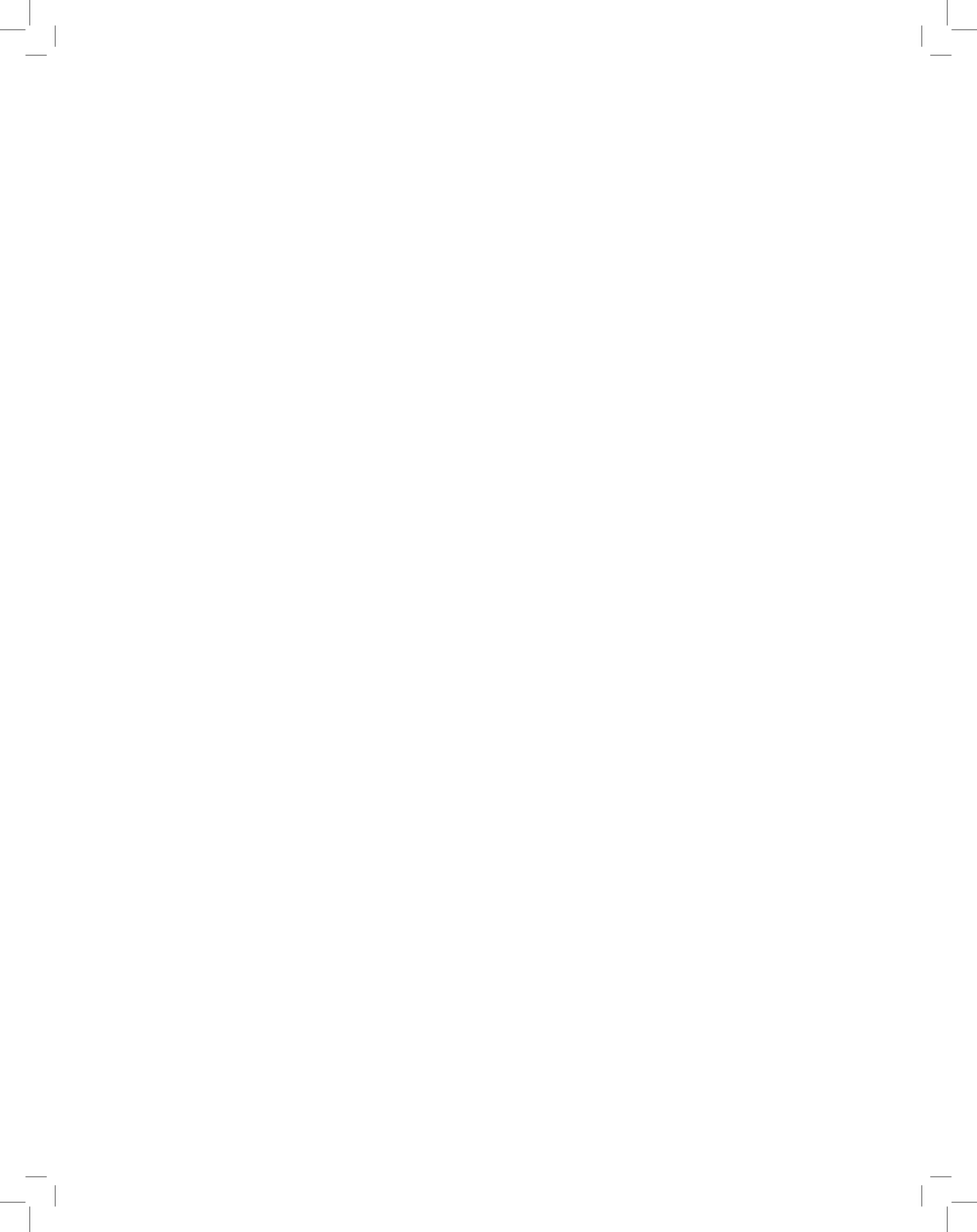
Table 2.03

Matriculation Campus																				
Campus that Provides Distance Courses	Headcount					Enrollment (Seat Count)					Student Credit Hours									
	Anchorage	Kodiak	Mat-Su	PWSC	Non UAA	TOTAL	Anchorage	Kodiak	Mat-Su	PWSC	Non UAA	TOTAL	Anchorage	Kodiak	Mat-Su	PWSC	Non UAA	TOTAL		
Prince William Sound College																				
2014 - 2015	207	16	6	16	37	442	276	20	8	17	436	48	805	776	56	20	49	1,213	137	2,251
2015 - 2016	125	10	7	3	41	315	167	10	10	3	323	54	567	460	32	24	9	923	153	1,601
2016 - 2017	296	21	3	27	52	534	404	24	3	37	290	68	826	1,049	70	9	99	831	183	2,241
2017 - 2018	408	20	12	20	36	580	550	21	14	25	193	47	850	1,463	61	40	71	525	122	2,282
2018 - 2019	494	38	9	45	39	715	617	44	11	52	244	47	1,015	1,675	128	31	149	695	140	2,818
UAA Total																				
2014 - 2015	9,643	913	209	507	528	11,883	22,652	2,300	489	1,149	474	708	27,772	65,586	6,822	1,286	3,139	1,317	1,953	80,103
2015 - 2016	10,008	808	247	521	606	12,198	24,307	1,933	572	1,118	373	825	29,128	71,088	5,579	1,540	3,187	1,065	2,369	84,828
2016 - 2017	10,041	712	247	536	830	12,402	25,982	1,824	585	1,311	344	1,169	31,215	76,046	5,273	1,687	3,604	997	3,492	91,099
2017 - 2018	10,765	708	238	545	901	13,177	28,693	1,826	618	1,296	267	1,209	33,909	83,402	5,096	1,762	3,550	720	3,140	97,670
2018 - 2019	11,329	720	160	524	911	13,657	30,610	1,889	442	1,185	306	1,321	35,753	88,963	5,406	1,233	3,474	874	3,344	103,294

Source: Statewide IR DSD data system at semester closing freeze.

Notes:

1. Enrollment includes auditors. Student credit hours include audit hours.
2. An Academic Year (AY) includes summer, fall and spring semesters, starting with summer as the first term counted.
3. Totals may not equal the sum of all categories due to rounding.
4. Distance courses are 0% to 50% location based using specific Banner codes 0, 1, 2 where: 0 = 0% location based; 1 = 1-20% location based; 2 = 21-50% location based. Courses included in this report are session codes 0, 1, and 2.



Awards

Degree and Certificate Awards Conferred by Type and Campus Academic Years 2015 - 2019

Table 3.01

Degree Type	Academic Year					Total 2015-2019	% Change 2015-2019
	2014-15	2015-16	2016-17	2017-18	2018-19		
Anchorage Campus							
Licensure / Post Certificate	93	88	80	89	41	391	-55.9%
Occupational Endorsement	96	94	66	40	41	337	-57.3%
Certificate	59	59	45	44	44	251	-25.4%
Associate	579	577	583	521	559	2,819	-3.5%
Baccalaureate	1,094	1,177	1,175	1,209	1,148	5,803	4.9%
Master	293	251	220	247	219	1,230	-25.3%
Doctorate	1	1	7	2	6	17	500.0%
Total	2,215	2,247	2,176	2,152	2,058	10,848	-7.1%
Kenai Peninsula College							
Certificate	12	7	5	18	11	53	-8.3%
Associate	157	118	109	109	76	569	-51.6%
Total	169	125	114	127	87	622	-48.5%
Kodiak College							
Occupational Endorsement	6	1	7	4		18	
Associate	22	22	21	26	24	115	9.1%
Total	28	23	28	30	24	133	-14.3%
Matanuska-Susitna College							
Occupational Endorsement	28	11	8	14	13	74	-53.6%
Certificate	4	1	2	2	3	12	-25.0%
Associate	106	118	113	101	111	549	4.7%
Total	138	130	123	117	127	635	-8.0%
Prince William Sound College							
Occupational Endorsement	2	5	1	2	9	19	350.0%
Associate	9	23	18	16	12	78	33.3%
Total	11	28	19	18	21	97	90.9%
UAA Total							
Licensure / Post Certificate	93	88	80	89	41	391	-55.9%
Occupational Endorsement	132	111	82	60	63	448	-52.3%
Certificate	75	67	52	64	58	316	-22.7%
Associate	873	858	844	773	782	4,130	-10.4%
Baccalaureate	1,094	1,177	1,175	1,209	1,148	5,803	4.9%
Master	293	251	220	247	219	1,230	-25.3%
Doctorate	1	1	7	2	6	17	500.0%
Total	2,561	2,553	2,460	2,444	2,317	12,335	-9.5%

Degree and Certificate Awards Conferred by Award Type Academic Years 2015 - 2019

Table 3.02

Degree Type	Academic Year					Total 2015-2019	% Change 2015-2019
	2014-15	2015-16	2016-17	2017-18	2018-19		
Associate of Applied Science	607	587	564	523	482	2,763	-20.6%
Associate of Arts	266	271	280	250	300	1,367	12.8%
Bachelor of Arts	375	414	386	373	317	1,865	-15.5%
Bachelor of Business Admin	191	219	206	168	219	1,003	14.7%
Bachelor of Fine Arts	6	3	6	7	6	28	0.0%
Bachelor of Human Services	15	13	16	15	17	76	13.3%
Bachelor of Liberal Studies	5	1		3		9	
Bachelor of Music	8	9	8	10	9	44	12.5%
Bachelor of Science	472	488	524	600	554	2,638	17.4%
Bachelor of Social Work	22	30	29	33	26	140	18.2%
Certificate	75	67	52	64	58	316	-22.7%
Doctor of Nursing Practice			4		3	7	
Doctor of Philosophy	1	1	3	2	3	10	200.0%
Graduate Certificate	86	85	55	73	32	331	-62.8%
Master - Other	3	1	1			5	-100.0%
Master of Arts	12	12	3	13	7	47	-41.7%
Master of Arts in Teaching	23	15	19	25	20	102	-13.0%
Master of Business Admin	41	36	27	26	28	158	-31.7%
Master of Civil Engineering	2	3	1	2		8	-100.0%
Master of Education	59	47	55	45	40	246	-32.2%
Master of Fine Arts	13	9	8	13	11	54	-15.4%
Master of Public Admin	12	10	9	6	9	46	-25.0%
Master of Public Health	12	17	5	12	10	56	-16.7%
Master of Science	87	85	72	86	61	391	-29.9%
Master of Social Work	29	16	20	19	33	117	13.8%
Occupational Endorsement Cert	132	111	82	60	63	448	-52.3%
Post Baccalaureate Certificate	7	3	25	16	9	60	28.6%
Total	2,561	2,553	2,460	2,444	2,317	12,335	-9.5%

Source: UA Statewide IR DSD Degrees data table compiled by UAA IR.

Degree and Certificate Awards by Classification of Instructional Program (CIP) Academic Years 2015 - 2019

Table 3.03

CIP Type	2015	2016	2017	2018	2019
Area, Ethnic, Cultural, Gender, and Group Studies	3	6	4	3	1
Biological and Biomedical Sciences	45	51	45	48	36
Business, Management, Marketing, and Related Support Services	400	410	367	302	340
Communication, Journalism, and Related Programs	22	19	19	26	27
Computer and Information Sciences and Support Services	54	51	48	47	45
Education	211	207	199	203	129
Engineering Technologies and Engineering-Related Fields	145	139	116	132	97
Engineering	114	117	137	158	143
English Language and Literature / Letters	49	53	42	53	43
Family and Consumer Sciences / Human Sciences	21	18	14	9	29
Foreign Languages, Literatures, and Linguistics	18	21	15	19	10
Health Professions and Related Programs	513	523	495	544	509
History	32	32	37	23	25
Homeland Security, Law Enforcement, Firefighting & Related Services	47	56	61	49	41
Legal Professions and Studies	13	9	20	24	13
Liberal Arts and Sciences, General Studies and Humanities	271	272	280	253	300
Mathematics and Statistics	15	16	7	14	10
Mechanic and Repair Technologies / Technicians	57	52	64	50	71
Multi/Interdisciplinary Studies	50	53	61	59	56
Natural Resources and Conservation	17	14	9	16	6
Parks, Recreation, Leisure, and Fitness Studies	16	12	13	21	20
Personal and Culinary Services	21	24	15	17	16
Philosophy and Religious Studies	4	6	7	9	4
Physical Sciences	24	22	21	20	10
Precision Production	27	35	39	25	25
Psychology	82	96	79	78	60
Public Administration and Social Service Professions	78	67	66	66	70
Science Technologies / Technicians	32	25	23	16	26
Social Sciences	84	66	77	72	58
Transportation and Materials Moving	56	43	43	53	52
Visual and Performing Arts	40	38	37	35	45
Total	2,561	2,553	2,460	2,444	2,317

Source: UA Statewide IR DSD Degrees data table compiled by UAA IR.

Note:

The Classification of Instructional Programs (CIP) Code is a taxonomy defined by the National Center for Education Statistics (NCES) of the U. S. Department of Education.

Degree and Certificate Awards Conferred UAA Academic Years 1988 - 2019

Table 3.04

Year	Conferred							Cumulative								
	Post Cert	Occupat'l	Cert	Assoc	Bachelor	Master's	Doctorate	Total	Post Cert	Occupat'l	Cert	Assoc	Bachelor	Master's	Doctorate	Total
1988 - 1995			805	4,260	4,670	1,144		10,879			805	4,260	4,670	1,144		10,879
1995 - 96			110	679	833	180		1,802			915	4,939	5,503	1,324		12,681
1996 - 97			89	629	749	235		1,702			1,004	5,568	6,252	1,559		14,383
1997 - 98			86	603	770	222		1,681			1,090	6,171	7,022	1,781		16,064
1998 - 99			91	563	708	263		1,625			1,181	6,734	7,730	2,044		17,689
1999 - 00			71	478	724	203		1,476			1,252	7,212	8,454	2,247		19,165
2000 - 01			61	515	705	178		1,459			1,313	7,727	9,159	2,425		20,624
2001 - 02			74	547	766	159		1,546			1,387	8,274	9,925	2,584		22,170
2002 - 03			88	530	770	204		1,592			1,475	8,804	10,695	2,788		23,762
2003 - 04			91	601	785	241		1,718			1,566	9,405	11,480	3,029		25,480
2004 - 05	16		107	523	778	263		1,687	16		1,673	9,928	12,258	3,292		27,167
2005 - 06	22		108	634	841	238		1,843	38		1,781	10,562	13,099	3,530		29,010
2006 - 07	44		99	676	847	356		2,022	82		1,880	11,238	13,946	3,886		31,032
2007 - 08	50	47	85	679	871	289		2,021	132	47	1,965	11,917	14,817	4,175		33,053
2008 - 09	38	49	74	684	956	270		2,071	170	96	2,039	12,601	15,773	4,445		35,124
2009 - 10	60	116	60	719	920	296		2,171	230	212	2,099	13,320	16,693	4,741		37,295
2010 - 11	63	123	78	756	1,001	305		2,326	293	335	2,177	14,076	17,694	5,046		39,621
2011 - 12	66	153	67	774	971	276		2,307	359	488	2,244	14,850	18,665	5,322		41,928
2012 - 13	64	136	57	854	1,064	312	2	2,489	423	624	2,301	15,704	19,729	5,634	2	44,417
2013 - 14	98	162	66	905	1,131	268	3	2,633	521	786	2,367	16,609	20,860	5,902	5	47,050
2014 - 15	93	132	75	873	1,094	293	1	2,561	614	918	2,442	17,482	21,954	6,195	6	49,611
2015 - 16	88	111	67	858	1,177	251	1	2,553	702	1,029	2,509	18,340	23,131	6,446	7	52,164
2016 - 17	80	82	52	844	1,175	220	7	2,460	782	1,111	2,561	19,184	24,306	6,666	14	54,624
2017 - 18	89	60	64	773	1,209	247	2	2,444	871	1,171	2,625	19,957	25,515	6,913	16	57,068
2018 - 19	41	63	58	782	1,148	219	6	2,317	912	1,234	2,683	20,739	26,663	7,132	22	59,385

Source: UA Statewide IR DSD Degrees data table, except data for 1987-1988, is collected in UAA Semester Report by UAA IR.

Faculty and Staff

Employee Headcount Trends by UAA Administrative Unit, Fall 2014 - 2018

All Employees

Table 4.01

	Fall 2014			Fall 2015			Fall 2016			Fall 2017			Fall 2018			2014-2018 % Change in Total
	Faculty	Non Fac	Total	Faculty	Non Fac	Total	Faculty	Non Fac	Total	Faculty	Non Fac	Total	Faculty	Non Fac	Total	
Anchorage Campus																
College of Arts & Sciences	403	254	657	378	249	627	360	264	624	332	228	560	312	225	537	-18%
College of Business & Public Policy	87	86	173	83	77	160	78	70	148	85	74	159	77	72	149	-14%
College of Engineering	56	59	115	52	79	131	51	95	146	49	99	148	49	89	138	20%
College of Health	226	182	408	228	180	408	222	182	404	226	190	416	235	197	432	6%
Community & Technical College	116	129	245	103	129	232	103	120	223	104	125	229	123	116	239	-2%
Consortium Library	29	63	92	27	73	100	27	61	88	26	56	82	27	52	79	-14%
Chancellor's Office		11	11		10	10		9	9		10	10		9	9	-18%
Provost Operations	90	168	258	90	175	265	90	175	265	75	194	269	62	202	264	2%
VC, Administrative Operation	3	525	528		482	482		459	459		423	423	4	415	419	-21%
VC, Student Affairs	3	333	336	1	328	329		293	293		294	294		285	285	-15%
VC, University Advancement		36	36		37	37		34	34		20	20		24	24	-33%
Anchorage Campus Total	1,013	1,846	2,859	962	1,819	2,781	931	1,762	2,693	897	1,713	2,610	889	1,686	2,575	-10%
Kenai Peninsula College	152	146	298	127	137	264	119	120	239	122	121	243	114	120	234	-21%
Kodiak College	39	41	80	37	37	74	32	31	63	39	32	71	36	31	67	-16%
Matanuska-Susitna College	109	77	186	110	79	189	111	58	169	107	59	166	97	64	161	-13%
Prince William Sound College	35	51	86	38	50	88	29	45	74	29	49	78	31	48	79	-8%
UAA Total	1,348	2,161	3,509	1,274	2,122	3,396	1,222	2,016	3,238	1,194	1,974	3,168	1,167	1,949	3,116	-11%

Employee Headcount Trends by UAA Administrative Unit, Fall 2014 - 2018

Regular and Term Employees

Table 4.01a

	Fall 2014			Fall 2015			Fall 2016			Fall 2017			Fall 2018			2014-2018 % Change in Total
	Faculty	Non Fac	Total	Faculty	Non Fac	Total	Faculty	Non Fac	Total	Faculty	Non Fac	Total	Faculty	Non Fac	Total	
Anchorage Campus																
College of Arts & Sciences	240	96	336	223	95	318	221	102	323	209	99	308	190	94	284	-15%
College of Business & Public Policy	62	44	106	59	37	96	57	36	93	57	39	96	56	39	95	-10%
College of Engineering	41	15	56	40	18	58	34	18	52	37	20	57	39	20	59	5%
College of Health	134	127	261	138	122	260	135	120	255	135	117	252	133	122	255	-2%
Community & Technical College	56	52	108	47	43	90	49	36	85	48	33	81	61	34	95	-12%
Consortium Library	29	28	57	27	27	54	27	28	55	26	25	51	27	25	52	-9%
Chancellor's Office		11	11		8	8		9	9		10	10		9	9	-18%
Provost Operations	17	93	110	24	108	132	22	116	138	21	117	138	20	141	161	46%
VC, Administrative Operation	3	311	314		300	300		302	302		283	283		278	278	-11%
VC, Student Affairs	1	152	153	1	145	146		127	127		124	124		126	126	-18%
VC, University Advancement		25	25		23	23		22	22		20	20		22	22	-12%
Anchorage Campus Total	583	954	1,537	559	926	1,485	545	916	1,461	533	887	1,420	526	910	1,436	-7%
Kenai Peninsula College	42	69	111	39	69	108	37	66	103	35	63	98	33	66	99	-11%
Kodiak College	14	27	41	13	28	41	13	21	34	13	20	33	13	17	30	-27%
Matanuska-Susitna College	31	44	75	30	43	73	29	42	71	26	39	65	25	41	66	-12%
Prince William Sound College	9	29	38	7	32	39	6	31	37	7	30	37	6	33	39	3%
UAA Total	679	1,123	1,802	648	1,098	1,746	630	1,076	1,706	614	1,039	1,653	603	1,067	1,670	-7%

Employee Headcount Trends by UAA Administrative Unit, Fall 2014 - 2018

Temporary Employees

Table 4.01b

	Fall 2014			Fall 2015			Fall 2016			Fall 2017			Fall 2018			2014-2018 % Change in Total
	Faculty	Non Fac	Total	Faculty	Non Fac	Total	Faculty	Non Fac	Total	Faculty	Non Fac	Total	Faculty	Non Fac	Total	
Anchorage Campus																
College of Arts & Sciences	163	158	321	155	154	309	139	162	301	123	129	252	122	131	253	-21%
College of Business & Public Policy	25	42	67	24	40	64	21	34	55	28	35	63	21	33	54	-19%
College of Engineering	15	44	59	12	61	73	17	77	94	12	79	91	10	69	79	34%
College of Health	92	55	147	90	58	148	87	62	149	91	73	164	102	75	177	20%
Community & Technical College	60	77	137	56	86	142	54	84	138	56	92	148	62	82	144	5%
Consortium Library		35	35		46	46		33	33		31	31		27	27	-23%
Chancellor's Office					2	2										
Provost Operations	73	75	148	66	67	133	68	59	127	54	77	131	42	61	103	-30%
VC, Administrative Operation		214	214		182	182		157	157		140	140	4	137	141	-34%
VC, Student Affairs	2	181	183		183	183		166	166		170	170		159	159	-13%
VC, University Advancement		11	11		14	14		12	12					2	2	-82%
Anchorage Campus Total	430	892	1,322	403	893	1,296	386	846	1,232	364	826	1,190	363	776	1,139	-14%
Kenai Peninsula College	110	77	187	88	68	156	82	54	136	87	58	145	81	54	135	-28%
Kodiak College	25	14	39	24	9	33	19	10	29	26	12	38	23	14	37	-5%
Matanuska-Susitna College	78	33	111	80	36	116	82	16	98	81	20	101	72	23	95	-14%
Prince William Sound College	26	22	48	31	18	49	23	14	37	22	19	41	25	15	40	-17%
UAA Total	669	1,038	1,707	626	1,024	1,650	592	940	1,532	580	935	1,515	564	882	1,446	-15%

Source: The data in this section (Tables 4.01 - 4.07) is extracted from Banner Statewide H Tables at fall freeze.

Note: Faculty members in this report are based on Human Resources EEO classification.

Employee Characteristics by Campus, Fall 2018

Table 4.02

	Anchorage	Kenai	Kodiak	Mat-Su	PW Sound	UAA Total
Total	2,575	234	67	161	79	3,116
Job Classification						
Executive	18	1	1	1	1	22
Faculty	889	114	36	97	31	1,167
Professional	507	33	5	8	13	566
Paraprofessional	283	26	17	25	11	362
Clerical	126	20	3	11	3	163
Skilled	42	3	1	3	1	50
Maintenance	83	10	2	3	15	113
Graduate Assistant	47					47
Student Assistant	580	27	2	13	4	626
Gender						
Female	1,486	130	48	104	44	1,812
Male	1,089	104	19	57	35	1,304
Race / Ethnicity						
African American	87	1	1	3		92
AK Native & Am Indian	100	10	2	3	2	117
AK Native & Am Indian Multirace	110	11	4	6	1	132
Asian	126	5	2	1	1	135
Hispanic	118	10	3	9	2	142
Hispanic Multirace	10					10
Native Hawaiian / Pacific Is	26	1	1	1		29
White	1,795	184	51	132	71	2,233
Multirace	81		1	1	1	84
Non Resident Alien	68			1		69
Not Reported	54	12	2	4	1	73
Workload						
Full-time	1,346	82	28	63	34	1,553
Part-time	1,229	152	39	98	45	1,563
Administrative Unit						
College of Arts & Sciences	537					537
College of Business & Public Policy	149					149
College of Engineering	138					138
College of Health	432					432
Community & Technical College	239					239
Consortium Library	79					79
Chancellor's Office	9					9
Provost Operations	264					264
VC, Administrative Operation	419					419
VC, Student Affairs	285					285
VC, University Advancement	24					24
Community Campus' Total		234	67	161	79	541

Regular and Term Employee Characteristics by Campus, Fall 2018

Table 4.02a

	Anchorage	Kenai	Kodiak	Mat-Su	PW Sound	UAA Total
Total	1,436	99	30	66	39	1,670
Job Classification						
Executive	18	1	1	1	1	22
Faculty	526	33	13	25	6	603
Professional	484	28	5	8	13	538
Paraprofessional	257	20	7	19	11	314
Clerical	75	10	2	8	2	97
Skilled	41	3	1	3	1	49
Maintenance	35	4	1	2	5	47
Gender						
Female	843	60	20	38	21	982
Male	593	39	10	28	18	688
Race / Ethnicity						
African American	51		1			52
AK Native & Am Indian	59	3	1		1	64
AK Native & Am Indian Multirace	50	5	1	3	1	60
Asian	69	3			1	73
Hispanic	63	5	1	3	1	73
Hispanic Multirace	4					4
Native Hawaiian / Pacific Is	9	1				10
White	1,054	75	25	55	33	1,242
Multirace	22		1	1	1	25
Non Resident Alien	20					20
Not Reported	35	7		4	1	47
Workload						
Full-time	1,344	82	28	63	34	1,551
Part-time	92	17	2	3	5	119
Administrative Unit						
College of Arts & Sciences	284					284
College of Business & Public Policy	95					95
College of Engineering	59					59
College of Health	255					255
Community & Technical College	95					95
Consortium Library	52					52
Chancellor's Office	9					9
Provost Operations	161					161
VC, Administrative Operation	278					278
VC, Student Affairs	126					126
VC, University Advancement	22					22
Community Campus' Total		99	30	66	39	234

Temporary Employee Characteristics by Campus, Fall 2018

Table 4.02b

	Anchorage	Kenai	Kodiak	Mat-Su	PW Sound	UAA Total
Total	1,139	135	37	95	40	1,446
Job Classification						
Faculty	363	81	23	72	25	564
Professional	23	5				28
Paraprofessional	26	6	10	6		48
Clerical	51	10	1	3	1	66
Skilled	1					1
Maintenance	48	6	1	1	10	66
Graduate Assistant	47					47
Student Assistant	580	27	2	13	4	626
Gender						
Female	643	70	28	66	23	830
Male	496	65	9	29	17	616
Race / Ethnicity						
African American	36	1		3		40
AK Native & Am Indian	41	7	1	3	1	53
AK Native & Am Indian Multirace	60	6	3	3		72
Asian	57	2	2	1		62
Hispanic	55	5	2	6	1	69
Hispanic Multirace	6					6
Native Hawaiian / Pacific Is	17		1	1		19
White	741	109	26	77	38	991
Multirace	59					59
Non Resident Alien	48			1		49
Not Reported	19	5	2			26
Workload						
Full-time	2					2
Part-time	1,137	135	37	95	40	1,444
Administrative Unit						
College of Arts & Sciences	253					253
College of Business & Public Policy	54					54
College of Engineering	79					79
College of Health	177					177
Community & Technical College	144					144
Consortium Library	27					27
Provost Operations	103					103
VC, Administrative Operation	141					141
VC, Student Affairs	159					159
VC, University Advancement	2					2
Community Campus' Total		135	37	95	40	307

Regular and Term Faculty Characteristics by Campus, Fall 2018

Table 4.03

	Anchorage	Kenai	Kodiak	Mat-Su	PW Sound	UAA Total
Total	525	33	13	25	6	602
Faculty Classification						
ACCFT and UACAD Faculty	465	32	13	23	6	539
Non Rep Faculty 12 Month	46			1		47
Non Rep Faculty Less 12 Month	14	1		1		16
Academic Rank						
Professor	142	5	1	4		152
Associate Professor	138	11	6	6	2	163
Assistant Professor	189	17	6	14	4	230
Instructor	56			1		57
Tenure Status						
Tenured	269	16	7	10		302
Tenure Track	107	8	1	4		120
Non-Tenure Track	149	9	5	11	6	180
Contract Type						
Bipartite	240	32	13	24	6	315
Tripartite	251	1				252
Not Assigned	34			1		35
Workload						
Full-time	490	33	13	25	6	567
Part-time	35					35
Gender						
Female	282	14	9	12	1	318
Male	243	19	4	13	5	284
Race / Ethnicity						
African American	12					12
AK Native & Am Indian	23					23
AK Native & Am Indian Multirace	13	1				14
Asian	36	2				38
Hispanic	11					11
Native Hawaiian / Pacific Is	2					2
White	396	28	13	25	6	468
Multirace	4					4
Non Resident Alien	14					14
Not Reported	14	2				16
Highest Degree						
Doctorate	317	12	4	15	2	350
Master's	173	17	9	8	3	210
Bachelor	20	2		1		23
Associate	11			1		12
Unknown	4	2			1	7

Regular and Term Faculty Characteristics by Campus, Fall 2018

Table 4.03

	Anchorage	Kenai	Kodiak	Mat-Su	PW Sound	UAA Total
Administrative Unit						
College of Arts & Sciences	190					190
College of Business & Public Policy	56					56
College of Engineering	39					39
College of Health	133					133
Community & Technical College	60					60
Consortium Library	27					27
Provost Operations	20					20
Community Campus' Total		33	13	25	6	77

Student Credit Hours Generated by Regular and Term Faculty, Fall 2018

Table 4.04

	050-099 Developmental	100-299 Lower Division	300-499 Upper Division	500-599 Professional	600-699 Graduate	TOTAL
Anchorage Campus						
Arts & Sciences	234	23,521	10,454	152	1,504	35,865
Business & Public Policy		4,884	4,413		807	10,104
Engineering		2,143	4,004		389	6,536
Health		6,712	5,494		1,961	14,167
Community & Technical	1,029	13,327	775	1		15,132
University Honors College		96	15			111
Anchorage Campus Total	1,263	50,683	25,155	153	4,661	81,915
Kenai Peninsula College	168	6,184	567			6,919
Kodiak College	33	1,699	45			1,777
Matanuska-Susitna College	124	4,273	54			4,451
Prince William Sound College	42	696		1		739
UAA Total	1,630	63,535	25,821	154	4,661	95,801

Student Credit Hours Generated by Adjunct Faculty, Fall 2018

Table 4.05

	050-099 Developmental	100-299 Lower Division	300-499 Upper Division	500-599 Professional	600-699 Graduate	TOTAL
Anchorage Campus						
Arts & Sciences		8,474	1,341	3,016	460	13,291
Business & Public Policy		1,335	794		48	2,177
Engineering		264	258		66	588
Health		2,523	1,118	39	203	3,883
Community & Technical	1,083	8,837	665	90		10,675
University Honors College		18	39			57
Anchorage Campus Total	1,083	21,451	4,215	3,145	777	30,671
Kenai Peninsula College	423	5,033	165	123		5,744
Kodiak College	84	1,183				1,267
Matanuska-Susitna College	333	6,372				6,705
Prince William Sound College		1,980		18		1,998
UAA Total	1,923	36,019	4,380	3,286	777	46,385

Source: The data regarding student information is extracted from Banner Statewide DSD data system at fall semester closing freeze and the data for faculty information is from Banner Statewide H Tables at fall freeze.

Note: Student Credit Hours are based on course level, representing credit courses at the 050 level and above, and do not include auditors.

Number of Course Sections Taught by Regular and Term Faculty, Fall 2018

Table 4.06

	050-099 Developmental	100-299 Lower Division	300-499 Upper Division	500-599 Professional	600-699 Graduate	TOTAL
Anchorage Campus						
Arts & Sciences	2	252	264	8	96	622
Business & Public Policy		46	59		19	124
Engineering		38	85	1	44	168
Health		205	134		58	397
Community & Technical	16	233	30	1		280
University Honors College		3	3			6
Anchorage Campus Total	18	777	575	10	217	1,597
Kenai Peninsula College	4	130	19			153
Kodiak College	2	56	2			60
Matanuska-Susitna College	1	105	3			109
Prince William Sound College	2	26		1		29
UAA Total	27	1,094	599	11	217	1,948

Number of Course Sections Taught by Adjunct Faculty, Fall 2018

Table 4.07

	050-099 Developmental	100-299 Lower Division	300-499 Upper Division	500-599 Professional	600-699 Graduate	TOTAL
Anchorage Campus						
Arts & Sciences		217	34	183	25	459
Business & Public Policy		15	13		2	30
Engineering		16	6		4	26
Health		69	22	1	7	99
Community & Technical	19	166	25	6		216
University Honors College		1	1			2
Anchorage Campus Total	19	484	101	190	38	832
Kenai Peninsula College	8	117	8	4		137
Kodiak College	3	39				42
Matanuska-Susitna College	7	132				139
Prince William Sound College		59		1		60
UAA Total	37	831	109	195	38	1,210

Source: The data regarding student information is extracted from Banner Statewide DSD data system at Fall semester closing freeze and the data for faculty information is from Banner Statewide H Tables at fall freeze.

Note: Number of Course Sections includes credit course sections only, which are courses at the 050 level and above.

Finance, Grants, and Giving

Authorized State Appropriation Budget Fiscal Years 2015 - 2019

Table 5.01

	FY2015	FY2016	FY2017	FY2018	FY2019	% Change FY15-FY19 FY18-FY19	
	(in Thousands of \$)						
Anchorage Campus	114,591	107,884	100,166	98,523	103,085	-10.0%	4.6%
Small Business Dev. Center	1,103	1,032	985	960	960	-13.0%	0.0%
Kenai Peninsula College	7,749	7,250	6,636	6,455	6,289	-18.8%	-2.6%
Kodiak College	2,848	2,717	2,435	2,359	2,303	-19.1%	-2.4%
Matanauska-Susitna College	5,444	5,204	4,869	4,708	4,569	-16.1%	-3.0%
Prince William Sound College	3,514	3,298	2,787	2,760	2,667	-24.1%	-3.4%
UAA Total	135,249	127,385	117,877	115,765	119,872	-11.4%	3.5%

Total Authorized Budget Fiscal Years 2015 - 2019

Table 5.02

	FY2015	FY2016	FY2017	FY2018	FY2019	% Change FY15-FY19 FY18-FY19	
	(in Thousands of \$)						
Anchorage Campus	274,766	273,622	268,603	267,117	265,992	-3.2%	-0.4%
Small Business Dev. Center	3,212	3,178	3,010	3,685	3,685	14.7%	0.0%
Kenai Peninsula College	16,957	16,898	16,653	16,440	16,302	-3.9%	-0.8%
Kodiak College	5,903	6,134	5,921	5,839	5,600	-5.1%	-4.1%
Matanauska-Susitna College	11,443	11,525	12,291	13,340	13,315	16.4%	-0.2%
Prince William Sound College	7,819	7,602	7,164	7,209	6,277	-19.7%	-12.9%
UAA Total	320,102	318,959	313,642	313,629	311,171	-2.8%	-0.8%

Source: UA Approved Operating and Capital Budgets (Yellowbook).

Actual State Appropriation Expenditures Fiscal Years 2014 - 2018

Table 5.03

	FY2014	FY2015	FY2016	FY2017	FY2018	% Change FY14-FY18 FY17-FY18	
	(in Thousands of \$)						
Anchorage Campus	116,413	113,901	108,421	100,738	98,445	-15.4%	-2.3%
Small Business Dev. Center	1,139	1,056	965	941	960	-15.8%	2.0%
Kenai Peninsula College	8,123	7,708	7,256	6,635	6,462	-20.4%	-2.6%
Kodiak College	3,117	2,856	2,722	2,423	2,366	-24.1%	-2.4%
Matanauska-Susitna College	5,204	5,464	5,211	4,877	4,714	-9.4%	-3.3%
Prince William Sound College	3,715	3,380	3,300	2,835	2,762	-25.7%	-2.6%
UAA Total	137,711	134,365	127,875	118,449	115,709	-16.0%	-2.3%

Total Actual Expenditures Fiscal Years 2014 - 2018

Table 5.04

	FY2014	FY2015	FY2016	FY2017	FY2018	% Change FY14-FY18 FY17-FY18	
	(in Thousands of \$)						
Anchorage Campus	262,336	266,438	263,392	259,434	259,930	-0.9%	0.2%
Small Business Dev. Center	2,527	2,420	2,289	3,035	3,005	18.9%	-1.0%
Kenai Peninsula College	15,441	15,727	13,914	15,393	13,838	-10.4%	-10.1%
Kodiak College	5,295	5,380	4,963	4,409	4,285	-19.1%	-2.8%
Matanauska-Susitna College	10,184	10,752	10,500	11,008	10,071	-1.1%	-8.5%
Prince William Sound College	6,378	5,798	5,442	5,831	5,277	-17.3%	-9.5%
UAA Total	302,160	306,516	300,500	299,110	296,405	-1.9%	-0.9%

Source: UA Approved Operating and Capital Budgets (Yellowbook).

Summary of UAA Expenditures by Functional Categories Fiscal Years 2015 - 2019

Table 5.05

(in Thousands of \$)													% Change	
Revenue	FY15	% Total	FY16	% Total	FY17	% Total	FY18	% Total	FY19	% Total	FY15-FY19	FY18-Y19		
Unrestricted														
Instruction	103,735	34%	102,765	34%	103,067	34%	100,587	34%	99,395	34%	-4%	-1%		
Research	4,473	1%	4,559	2%	4,861	2%	4,326	1%	3,687	1%	-18%	-15%		
Public Service	5,928	2%	5,844	2%	5,518	2%	4,962	2%	4,993	2%	-16%	1%		
Academic Support	18,754	6%	18,279	6%	16,887	6%	16,517	6%	18,260	6%	-3%	11%		
Library	7,185	2%	7,560	3%	6,981	2%	6,994	2%	6,781	2%	-6%	-3%		
Student Services	19,125	6%	17,371	6%	17,143	6%	17,188	6%	17,478	6%	-9%	2%		
Athletics	7,249	2%	9,149	3%	7,782	3%	8,356	3%	8,029	3%	11%	-4%		
Institutional Support	29,753	10%	30,384	10%	32,498	11%	30,878	10%	30,908	11%	4%	0%		
Physical Plant	35,030	11%	31,951	11%	33,395	11%	33,432	11%	30,455	10%	-13%	-9%		
Scholarships	-3,176	-1%	-1,858	-1%	-1,474	0%	-2,249	-1%	-1,657	-1%	-48%	-26%		
Auxiliary	5	0%			-96	0%	2	0%	1	0%	-76%	-48%		
Unrestricted Total	228,061	74%	226,004	75%	226,561	76%	220,994	75%	218,330	75%	-4%	-1%		
Matching														
Instruction					226	0%	246	0%	333	0%		35%		
Research					356	0%	307	0%	244	0%		-20%		
Public Service					912	0%	918	0%	1,024	0%		12%		
Academic Support					96	0%	109	0%	172	0%		58%		
Scholarships					48	0%	66	0%	136	0%		106%		
Student Services					27	0%	-7	0%				-100%		
Matching Total					1,665	1%	1,639	1%	1,909	1%		16%		

Summary of UAA Expenditures by Functional Categories Fiscal Years 2015 - 2019

Table 5.05

(in Thousands of \$)													% Change	
Revenue	FY15	% Total	FY16	% Total	FY17	% Total	FY18	% Total	FY19	% Total	FY15-FY19	FY18-Y19		
Restricted														
Instruction	6,376	2%	6,485	2%	7,468	2%	6,941	2%	7,068	2%	11%	2%		
Research	9,758	3%	11,187	4%	11,567	4%	12,808	4%	14,899	5%	53%	16%		
Public Service	10,999	4%	10,806	4%	9,645	3%	10,261	3%	9,057	3%	-18%	-12%		
Academic Support	1,165	0%	958	0%	947	0%	763	0%	802	0%	-31%	5%		
Library	45	0%	34	0%	104	0%	118	0%	131	0%	194%	11%		
Student Services	1,107	0%	1,416	0%	1,195	0%	1,222	0%	1,403	0%	27%	15%		
Athletics	33	0%	42	0%	52	0%	19	0%	23	0%	-30%	22%		
Institutional Support	132	0%	101	0%	32	0%	30	0%	87	0%	-34%	189%		
Physical Plant	131	0%	167	0%			92	0%	431	0%	230%	368%		
Scholarships	17,693	6%	15,975	5%	14,943	5%	16,198	5%	15,618	5%	-12%	-4%		
Restricted Total	47,438	15%	47,169	16%	45,952	15%	48,452	16%	49,519	17%	4%	2%		
Auxiliary														
	28,988	9%	25,432	8%	22,745	8%	22,817	8%	19,967	7%	-31%	-12%		
Designated														
Research							56	0%	32	0%		17%		
Physical Plant							2,128	1%	65	0%				
Scholarships	2,002	1%	2,113	1%	2,186	1%	2,183	1%	2,076	1%	4%	-2%		
Designated Total	2,002	1%	2,113	1%	2,186	1%	2,183	1%	2,173	1%	9%	0%		
TOTAL	306,489	100%	300,719	100%	299,110	100%	296,085	100%	291,898	100%	-5%	-1%		

Source: University of Alaska 'S' reports.

Note: Matching funds were separated out of the unrestricted funds and into their own category in FY17.

Authorized UAA Expenditure Budget (Unrestricted) Instruction Component Only, Fiscal Years 2015 - 2019

Table 5.06

	(in Thousands of \$)					% Change	
	FY2015	FY2016	FY2017	FY2018	FY2019	FY15-FY19	FY18-FY19
Anchorage Campus							
College of Arts & Sciences	29,621	29,093	27,568	29,563	21,311	-28%	-28%
School of Education	4,299	4,404	4,572	4,078	3,452	-20%	-15%
College of Business & Public Policy	10,083	9,985	10,091	9,832	9,618	-5%	-2%
College of Engineering	7,359	6,921	7,448	8,296	7,707	5%	-7%
College of Health	18,751	20,664	22,395	20,845	20,676	10%	-1%
Community & Technical College	16,452	15,129	14,750	11,365	11,834	-28%	4%
Provost Operations	1,871	1,808	3,212	5,637	6,742	260%	20%
Anchorage Campus Total	88,435	88,005	90,036	89,617	81,339	-8%	-9%
Kenai Peninsula College	7,773	8,009	7,974	7,910	7,749	0%	-2%
Kodiak College	2,573	2,276	2,145	1,986	2,037	-21%	3%
Matanuska-Susitna College	4,610	5,886	5,776	5,430	5,666	23%	4%
Prince William Sound College	1,737	1,615	1,305	1,392	1,589	-8%	14%
UAA Total	105,127	105,792	107,236	106,334	98,380	-6%	-7%

Source: UAA Budget Office.

Notes:

1. Includes Academic Units only and does not include central administration, Chancellor, or information technology services units.
2. Updated using FY19 Revenue and Expense TOAD Report sorted by Instruction NACUBO for Accepted Budget for Expense.

Summary of UAA Revenue Received Fiscal Years 2015 - 2019

Table 5.07

Revenue	(in Thousands of \$)										% Change	
	FY15	% Total	FY16	% Total	FY17	% Total	FY18	% Total	FY19	% Total	FY15-FY19	FY18-Y19
Unrestricted:												
General Funds	137,962	45%	131,898	43%	123,134	42.0%	119,933	41%	123,555	42%	-10%	3%
Net Tuition / Fees	72,728	24%	76,662	25%	76,727	26.2%	78,575	27%	76,566	26%	5%	-3%
UA Intra-Agency Rcpt	9,220	3%	9,772	3%	7,292	2.5%	7,114	2%	6,647	2%	-28%	-7%
UA Receipts	8,616	3%	9,206	3%	9,404	3.2%	10,209	3%	8,425	3%	-2%	-17%
Indirect Cost Recov	3,409	1%	4,376	1%	3,994	1.4%	4,381	1%	4,572	2%	34%	4%
CIP Receipts	832	0%	439	0%	442	0.2%					-100%	
Unrestricted Total	232,767	75%	232,352	76%	220,993	75.4%	220,212	75%	219,764	75%	-6%	0%
Match Total												
					1,777	0.6%	1,500	1%	2,442	0.8%		63%
Restricted:												
Federal Receipts	29,507	10%	29,487	10%	27,808	9%	29,872	10%	30,653	10%	4%	3%
State Intra-Agency Rcpt	8,451	3%	7,247	2%	6,309	2%	6,193	2%	6,478	2%	-23%	5%
Interest Income	1	0%	1	0%	1	0%	2	0%	3	0%	460%	40%
UA Receipts	9,460	3%	10,439	3%	11,838	4%	12,310	4%	12,420	4%	31%	1%
Restricted Total	47,418	15%	47,174	15%	45,957	16%	48,377	16%	49,554	17%	5%	2%
Auxiliary:												
Dorm, Food	25,129	8%	25,751	8%	21,959	7%	22,340	8%	20,998	7%	-16%	-6%
Indirect Cost Recov									3	0%		
Interest Income	22	0%			96	0%	67	0%	19	0%	-100%	-72%
UA Receipts	876	0%	136	0%	9	0%	15	0%	9	0%	-98%	-39%
Intra-Agency Receipts	604	0%	-403									
Auxiliary Total	26,632	9%	25,484	8%	22,064	8%	22,422	8%	21,029	7%	-21%	-6%
Designated Total	2,002	1%	2,113	1%	2,186	1%	2,183	1%	2,173	1%	9%	0%
UAA TOTAL	308,819	100%	307,124	100%	292,977	100%	294,694	100%	294,962	100%	-4%	0%

Source: University of Alaska "S" reports for UAA Appropriation.

Notes:

1. Auxiliary enterprises include Anchorage Campus Bookstore, Anchorage Housing & Dining Services, Anchorage Health Center, AK Airlines Arena, Anchorage Parking, Kenai Bookstore, Kodiak Bookstore, Kenai Health Center, Kenai Housing, Mat-Su Bookstore, PWSC Housing, and PWSC Fitness Center.
2. Unrestricted UA Receipts balance is after reversal of FY18 Unreserved Fund Balance \$16.4M.
3. Match funds were separated out of the unrestricted fund type and into their own category in FY17.

Research Grant Awards by UAA Units and Fund Agencies Fiscal Year 2019

Table 5.08

	Academic Support		Institutional Support		Instruction		Public Service		Research		Scholarship/ Fellowship		Student Services		TOTAL	
	N	\$	N	\$	N	\$	N	\$	N	\$	N	\$	N	\$	N	\$
College of Arts & Sciences																
Federal Agencies			1	690,000					28	4,192,149					29	4,882,149
Private Funding Sources			1	65,000	2	72,212	2	207,500	22	2,275,022					27	2,619,734
Alaska State Agencies					1	110,000	1	8,000	13	716,430					15	834,430
Total	2	755,000	2	755,000	3	182,212	3	215,500	63	7,183,601					71	8,336,313
College of Business & Public Policy																
Federal Agencies							2	650,000	3	525,048					5	1,175,048
Local Government							1	2,405	2	63,684					3	66,089
Private Funding Sources	1	218,000	1	618	4	53,465	5	102,290	16	742,165					27	1,116,538
Alaska State Agencies							1	14,246	10	931,588					11	945,834
Total	1	218,000	1	618	4	53,465	9	768,941	31	2,262,485					46	3,303,508
College of Engineering																
Federal Agencies									1	299,982					1	299,982
Private Funding Sources	1	6,500	7	331,661			4	130,140	7	255,838			1	9,800	20	733,939
Alaska State Agencies					1	30,000			3	308,440					4	338,440
Total	1	6,500	7	331,661	1	30,000	4	130,140	11	864,260			1	9,800	25	1,372,361
College of Health																
Federal Agencies	1	49,512			2	1,302,036	2	1,227,000	3	828,335					8	3,406,883
Private Funding Sources	2	61,354	4	149,511	9	1,447,077	7	546,260	6	455,373					28	2,659,575
Alaska State Agencies					4	219,667	34	4,603,562	11	755,853					49	5,579,082
Total	3	110,866	4	149,511	15	2,968,780	43	6,376,822	20	2,039,561					85	11,645,539
Community & Technical College																
Federal Agencies					1	15									1	15
Private Funding Sources							1	50,000							1	50,000
Total					1	15	1	50,000							2	50,015

Research Grant Awards by UAA Units and Fund Agencies Fiscal Year 2019

Table 5.08

	Academic Support		Institutional Support		Instruction		Public Service		Research		Scholarship/ Fellowship		Student Services		TOTAL	
	N	\$	N	\$	N	\$	N	\$	N	\$	N	\$	N	\$	N	\$
Consortium Library																
Federal Agencies							1	956,796	1	185,574					2	1,142,370
Private Funding Sources			2	103,875											2	103,875
Total			2	103,875			1	956,796	1	185,574					4	1,246,245
Chancellor Operation																
Federal Agencies	9	2,700,944			9	2,621,971									18	5,322,915
Local Government					2	128,500									2	128,500
Private Funding Sources					7	193,219									7	193,219
Alaska State Agencies					5	136,815									5	136,815
Total	9	2,700,944			23	3,080,505									32	5,781,449
Provost Operations																
Federal Agencies	1	73,777	1	600,000			3	149,985					1	3,500,000	6	4,323,762
Local Government					12	997,000									12	997,000
Private Funding Sources			7	4,815,000	3	66,500	3	280,000	1	5,000	1	12,002	1	48,000	16	5,226,502
Total	1	73,777	8	5,415,000	15	1,063,500	6	429,985	1	5,000	1	12,002	2	3,548,000	34	10,547,264
Senior Vice Provost																
Private Funding Sources							1	3,325	1	5,000					2	8,325
Student Affairs																
Federal Agencies													3	801,457	3	801,457
Private Funding Sources													1	5,000	1	5,000
Alaska State Agencies													1	64,355	1	64,355
Total													5	870,812	5	870,812
University Advancement																
Private Funding Sources			3	242,641											3	242,641

Research Grant Awards by UAA Units and Fund Agencies Fiscal Year 2019

Table 5.08

	Academic Support		Institutional Support		Instruction		Public Service		Research		Scholarship/ Fellowship		Student Services		TOTAL	
	N	\$	N	\$	N	\$	N	\$	N	\$	N	\$	N	\$	N	\$
Kenai Peninsula College																
Local Government	1	817,755													1	817,755
Private Funding Sources							1	5,401							1	5,401
Alaska State Agencies	1	167,197			1	4,050									2	171,247
Total	2	984,952			2	9,451									4	994,403
Kodiak College																
Alaska State Agencies	1	98,804													1	98,804
Prince William Sound College																
Federal Agencies	1	600,000													2	630,000
Private Funding Sources	1	14,250			1	2,048	1	11,400					1	30,000	3	27,698
Alaska State Agencies	4	131,167			4	131,167									4	131,167
Total	1	14,250			6	733,215	1	11,400					1	30,000	9	788,865
UAA Total																
Federal Agencies	1	49,512	1	690,000	5	2,502,051	14	5,455,767	47	12,305,809	3	149,985	4	831,457	75	21,984,581
Local Government					1	817,755	15	1,127,905	2	63,684					18	2,009,344
Private Funding Sources	5	297,856	19	907,555	23	6,389,802	32	1,316,035	54	3,786,398	3	280,000	3	19,800	139	12,997,446
Alaska State Agencies					12	756,835	42	4,766,673	37	2,712,311			1	64,355	92	8,300,173
Total	6	347,368	20	1,597,555	41	10,466,443	103	12,666,380	140	18,868,202	6	429,985	8	915,612	324	45,291,544

Source: UAA Research and Graduate Studies Office, compiled by UAA Office of Institutional Research.

Notes: Provost Operations awards are from the Alaska Native Science and Engineering Program and the Business Enterprise Institute which report directly to Provost.

N = number of grants awarded

\$ = amount awarded

Grant Awards by UAA Units and Functional Categories Fiscal Years 2015 - 2019

Table 5.09

	FY2015		FY2016		FY2017		FY2018		FY2019	
	N	\$	N	\$	N	\$	N	\$	N	\$
College of Arts & Sciences										
Academic Support	5	114,691	4	302,091	1	22,000	2	19,080		
Institutional Support			3	133,920	4	156,230	1	124,000	2	755,000
Instruction	17	1,115,419	5	671,158	6	801,416	6	187,841	3	182,212
Public Service	15	732,988	8	152,109	8	484,824	7	303,049	3	215,500
Research	49	3,191,237	61	6,365,619	45	6,140,876	60	5,644,270	63	7,183,601
Scholarship/Fellowship	1	5,100	1	6,200						
Student Services			1	10,000						
Total	87	5,159,435	83	7,641,097	64	7,605,346	76	6,278,240	71	8,336,313
College of Business & Public Policy										
Academic Support	3	439,290	3	451,501	1	229,974	3	48,549	1	218,000
Institutional Support					2	594,829			1	618
Instruction	4	673,560	7	1,138,184	4	75,714	4	289,690	4	53,465
Public Service	1	998	8	879,826	5	357,152	5	146,320	9	768,941
Research	30	1,341,649	34	2,365,141	34	2,708,158	31	3,004,052	31	2,262,485
Scholarship/Fellowship	1	1,000								
Total	39	2,456,497	52	4,834,653	46	3,965,827	43	3,488,611	46	3,303,508
College of Engineering										
Academic Support	2	5,205					2	11,258	1	6,500
Institutional Support			3	105,640	3	71,770	4	6,257	7	331,661
Instruction	3	1,804,864	1	877,404			1	655,140	1	30,000
Public Service	3	175,349	2	15,099	5	333,583	3	84,000	4	130,140
Research	16	1,771,974	15	3,209,818	10	558,251	16	1,111,571	11	864,260
Student Services	2	12,791					2	10,466	1	9,800
Total	26	3,770,183	21	4,207,961	18	963,604	28	1,878,692	25	1,372,361
College of Health										
Academic Support	2	82,170	3	112,500	4	235,606	3	81,945	3	110,866
Institutional Support	3	45,625	5	70,650	4	75,476	4	102,964	4	149,511
Instruction	10	1,718,300	12	2,311,879	10	1,895,613	9	2,672,566	15	2,968,780
Public Service	38	4,508,824	45	5,634,978	41	5,508,053	37	5,463,205	43	6,376,822
Research	18	1,994,451	16	775,906	26	2,621,164	20	1,308,688	20	2,039,561
Scholarship/Fellowship	4	820,237	1	2,600	1	2,600	1	10,000		
Student Services	1	3,798								
Total	76	9,173,405	82	8,908,513	86	10,338,511	74	9,639,367	85	11,645,539
Community & Technical College										
Academic Support	1	4,984					1	50,000		
Institutional Support	1	30,200	2	24,794	4	85,078	2	38,384		
Instruction	9	355,691	3	221,902	1	15,920			1	15
Public Service	2	73,842	3	154,000	2	214,164	1	58,800	1	50,000
Student Services							1	5,966		
Total	13	464,717	8	400,696	7	315,162	5	153,150	2	50,015

Grant Awards by UAA Units and Functional Categories Fiscal Years 2015 - 2019

Table 5.09

	FY2015		FY2016		FY2017		FY2018		FY2019	
	N	\$	N	\$	N	\$	N	\$	N	\$
Consortium Library										
Institutional Support	3	101,034	2	100,801	2	100,858	2	100,860	2	103,875
Public Service	9	1,570,141	5	1,226,291	3	626,052	3	567,946	1	956,796
Research					1	37,174	2	689,845	1	185,574
Total	12	1,671,175	7	1,327,092	6	764,084	7	1,358,651	4	1,246,245
Athletics / Sport Center										
Academic Support	1	38,380	1	46,905	1	51,300	1	50,034		
Public Service	1	4,800								
Total	2	43,180	1	46,905	1	51,300	1	50,034		
Facilities & Campus Services										
Institutional Support							1	250,000		
Chancellor Operation										
Instruction	1	40,000								
Public Service	19	2,082,612	17	2,087,891	17	1,963,525	21	3,177,527	23	3,080,505
Research	5	1,057,314	5	1,250,532	5	803,019	11	2,512,200	9	2,700,944
Total	25	3,179,927	22	3,338,423	22	2,766,544	32	5,689,727	32	5,781,449
Provost Operations										
Academic Support	3	62,372	3	670,000	1	449,999	1	449,999	1	12,002
Institutional Support			1	20,691	1	700	1	10,000		
Instruction	8	1,913,097	5	2,511,600	6	3,266,483	6	1,279,000	8	5,415,000
Public Service	5	3,028,934	14	903,200	10	1,294,205	19	1,447,635	15	1,063,500
Research	3	2,757,323	2	1,288,481	3	2,530,046	5	4,157,674	4	3,626,777
Scholarship/Fellowship	7	1,213,612	5	1,457,000	6	503,000	6	289,000	6	429,985
Student Services	1	9,874							1	5,000
Total	27	8,985,211	30	6,850,972	27	8,044,433	38	7,633,308	35	10,552,264
Senior Vice Provost										
Academic Support	1	6,650	1	6,000						
Public Service			2	6,683	1	5,099	1	4,900	1	3,325
Research	1	7,500	1	2,000	1	5,000	1	5,800	1	5,000
Total	2	14,150	4	14,683	2	10,099	2	10,700	2	8,325
Student Affairs										
Academic Support					1	20,500				
Institutional Support					2	67,783				
Public Service	1	22,000	2	52,695	1	66,795	1	20,000		
Student Services	4	938,136	3	578,186	2	595,032	5	873,682	5	870,812
Total	5	960,136	5	630,881	6	750,110	6	893,682	5	870,812
University Advancement										
Institutional Support	1	57,000	1	30,000	1	40,000			3	242,641

Grant Awards by UAA Units and Functional Categories Fiscal Years 2015 - 2019

Table 5.09

	FY2015		FY2016		FY2017		FY2018		FY2019	
	N	\$	N	\$	N	\$	N	\$	N	\$
Kenai Peninsula College										
Academic Support	1	11,000	1	1,380	1	1,050	1	2,409		
Institutional Support			1	10,000	1	15,000	1	40,453		
Instruction	7	1,005,409	4	993,176	2	175,803	2	987,901	2	984,952
Public Service	3	30,735	3	29,534	2	38,284	2	43,548	2	9,451
Research	1	60,992	1	174,336						
Student Services					1	779,958				
Total	12	1,108,136	10	1,208,427	7	1,010,095	6	1,074,311	4	994,403
Kodiak College										
Academic Support	2	411,593	1	399,877						
Institutional Support	2	21,140	1	9,614			1	5,164		
Instruction	2	113,571	2	296,902	1	97,557	2	448,909	1	98,804
Student Services							1	10,000		
Total	6	546,304	4	706,393	1	97,557	4	464,073	1	98,804
Matanuska-Susitna College										
Institutional Support	1	5,000								
Instruction	5	223,352	1	59,051	1	77,294				
Student Services	1	14,960	2	200,333						
Total	7	243,312	3	259,384	1	77,294				
Prince William Sound College										
Academic Support			1	14,850						
Institutional Support			2	11,316	2	89,300	2	30,959	1	14,250
Instruction	1	85,626	3	165,065	2	139,755	5	182,284	6	733,215
Public Service	3	16,236	2	38,425					1	11,400
Student Services			1	17,000	1	80,000			1	30,000
Total	4	101,862	9	246,656	5	309,055	7	213,243	9	788,865
UAA Total										
Academic Support	21	1,176,335	18	2,005,104	10	1,010,429	14	713,274	6	347,368
Institutional Support	11	259,998	21	517,426	26	1,297,023	19	709,042	20	1,597,555
Instruction	67	9,048,889	42	8,806,275	33	6,545,555	35	6,703,331	41	10,466,443
Public Service	101	12,268,151	111	11,180,732	95	10,891,735	100	11,316,929	103	12,666,380
Research	124	12,187,197	135	15,431,833	125	15,403,689	146	18,434,100	140	18,868,202
Scholarship/Fellowship	14	2,040,949	8	1,905,847	7	505,600	7	299,000	6	429,985
Student Services	9	979,558	7	805,519	4	1,454,990	9	900,114	8	915,612
Total	347	37,961,076	342	40,652,736	300	37,109,020	330	39,075,789	324	45,291,544

Source: UAA Research and Graduate Studies Office, compiled by UAA Office of Institutional Research.

Notes:

1. N = number of grants awarded
2. \$ = amount awarded

Research Grant Proposal Submissions by UAA Units and Fund Agencies Fiscal Year 2019

Table 5.10

	Academic Support		Institutional Support		Instruction		Public Service		Research		Scholarship / Fellowship		Student Services		TOTAL	
	N	\$	N	\$	N	\$	N	\$	N	\$	N	\$	N	\$	N	\$
College of Arts & Sciences																
Federal Agencies									43	14,047,103					43	14,047,103
Private Funding Sources	1	65,000	3	111,115	5	518,211			41	4,735,310	1	96,161			51	5,525,797
Alaska State Agencies			1	105,892	1	8,000			21	1,081,924					23	1,195,816
Total	1	65,000	4	217,007	6	526,211			105	19,864,337	1	96,161			117	20,768,716
College of Business & Public Policy																
Federal Agencies									6	1,596,527					6	1,596,527
Local Government					1	2,405			2	54,350					3	56,755
Private Funding Sources					4	425,387			27	4,891,218					31	5,316,605
Alaska State Agencies					1	14,246			17	3,627,278					18	3,641,524
Total					6	442,038			52	10,169,373					58	10,611,411
College of Engineering																
Federal Agencies									5	4,394,467					5	4,394,467
Private Funding Sources	6	272,980	1	26,756	2	7,496			18	6,904,532					27	7,211,764
Alaska State Agencies			1	30,000					5	1,311,517			1	42,000	7	1,383,517
Total	6	272,980	2	56,756	2	7,496			28	12,610,516			1	42,000	39	12,989,748
College of Health																
Federal Agencies			1	2,590,906	3	1,671,920			3	2,319,125					7	6,581,951
Private Funding Sources	1	80,000	12	302,025	19	2,427,648			29	3,128,825					61	5,938,498
Alaska State Agencies			3	148,861	32	3,996,815			14	834,000					49	4,979,676
Total	1	80,000	16	3,041,792	54	8,096,383			46	6,281,950					117	17,500,125

Research Grant Proposal Submissions by UAA Units and Fund Agencies Fiscal Year 2019

Table 5.10

	Academic Support		Institutional Support		Instruction		Public Service		Research		Scholarship / Fellowship		Student Services		TOTAL	
	N	\$	N	\$	N	\$	N	\$	N	\$	N	\$	N	\$	N	\$
Community & Technical College																
Private Funding Sources					1	140,000									1	140,000
Consortium Library																
Federal Agencies							1	5,661,381							1	5,661,381
Facilities & Campus Services																
Federal Agencies									1	514,305					1	514,305
Chancellor Operation																
Federal Agencies							8	7,187,770			11	4,214,316			19	11,402,086
Local Government							3	178,500							3	178,500
Private Funding Sources							12	1,357,228			4	593,259			16	1,950,487
Alaska State Agencies							5	126,553							5	126,553
Total							28	8,850,051			15	4,807,575			43	13,657,626
Provost Operations																
Federal Agencies	1	474,908					1	108,213				1	250,000		3	833,121
Local Government							12	1,003,000							12	1,003,000
Private Funding Sources					8	8,382,002	5	303,000		3	196,295	4	417,000		20	9,298,297
Total	1	474,908			8	8,382,002	18	1,414,213		3	196,295	5	667,000		35	11,134,418
University Advancement																
Private Funding Sources			3	242,641											3	242,641

Research Grant Proposal Submissions by UAA Units and Fund Agencies Fiscal Year 2019

Table 5.10

	Academic Support		Institutional Support		Instruction		Public Service		Research		Scholarship / Fellowship		Student Services		TOTAL	
	N	\$	N	\$	N	\$	N	\$	N	\$	N	\$	N	\$	N	\$
Kenai Peninsula College																
Federal Agencies					1	262,800									1	262,800
Local Government					1	817,775									1	817,775
Private Funding Sources							1	4,000							1	4,000
Alaska State Agencies					1	167,197	1	5,000							2	172,197
Total					3	1,247,772	2	9,000							5	1,256,772
Kodiak College																
Alaska State Agencies					1	98,804									1	98,804
Prince William Sound College																
Federal Agencies													2	89,694	2	89,694
Private Funding Sources									1	998,000					1	998,000
Alaska State Agencies					5	577,131									5	577,131
Total					5	577,131			1	998,000			2	89,694	9	1,664,825
UAA Total																
Federal Agencies	1	474,908			2	2,853,706	13	14,629,284	69	27,085,843	1	250,000	2	89,694	88	45,383,435
Local Government					1	817,775	16	1,183,905	2	54,350					19	2,056,030
Private Funding Sources			11	660,621	25	8,961,898	48	5,042,970	123	21,447,439	5	513,161			212	36,626,089
Alaska State Agencies					12	1,127,885	40	4,150,614	57	6,854,719			1	42,000	110	12,175,218
Total	1	474,908	11	660,621	40	13,761,264	117	25,006,773	251	55,442,351	6	763,161	3	131,694	429	96,240,772

Source: UAA Research and Graduate Studies Office, compiled by UAA Office of Institutional Research.

Notes:

1. N = number of proposals submitted
2. \$ = amount requested of the proposals
3. Proposals with a status of "Withdrawn" have been excluded.

Grant Proposal Submissions by UAA Units and Functional Categories Fiscal Years 2015 - 2019

Table 5.11

	FY2015		FY2016		FY2017		FY2018		FY2019	
	N	\$	N	\$	N	\$	N	\$	N	\$
College of Arts & Sciences										
Academic Support	2	386,525	2	274,636						
Institutional Support			4	134,910	3	151,500	2	814,000	1	65,000
Instruction	12	297,447	5	3,491,006	5	2,905,493	5	2,548,782	4	217,007
Public Service	17	1,246,816	10	1,306,756	15	1,104,415	11	762,112	6	526,211
Research	139	34,261,565	98	24,057,499	133	30,960,327	122	23,015,847	105	19,864,337
Scholarship/Fellowship			1	17,540	1	75,969	1	113,388	1	96,161
Student Services			2	2,732,591						
Total	170	36,192,353	122	32,014,938	157	35,197,704	141	27,254,129	117	20,768,716
College of Business & Public Policy										
Academic Support			1	20,000			1	20,000		
Institutional Support					2	594,829				
Instruction					1	1,016				
Public Service	2	57,664	5	402,689	5	250,371	9	2,819,556	6	442,038
Research	42	3,495,532	53	9,997,063	45	5,168,002	53	7,222,079	52	10,169,373
Scholarship/Fellowship	1	4,950								
Total	45	3,558,146	59	10,419,752	53	6,014,218	63	10,061,635	58	10,611,411
College of Engineering										
Academic Support	1	800					1	10,536		
Institutional Support			3	105,640	1	89,100	2	3,742	6	272,980
Instruction	2	21,485					1	31,887	2	56,756
Public Service	1	14,710			4	141,395	1	7,000	2	7,496
Research	19	2,878,315	31	7,121,451	23	3,630,511	26	6,323,217	28	12,610,516
Student Services	2	5,455	1	42,000	1	42,000	2	10,466	1	42,000
Total	25	2,920,765	35	7,269,091	29	3,903,006	33	6,386,848	39	12,989,748
College of Health										
Academic Support			1	30,000	3	584,207	1	49,512		
Institutional Support	1	5,000	1	10,000			2	39,393	1	80,000
Instruction	5	1,767,218	6	5,371,232	7	1,296,450	12	2,935,988	16	3,041,792
Public Service	45	7,974,894	43	3,985,779	45	5,209,576	42	8,655,882	54	8,096,383
Research	35	7,025,056	33	10,102,100	33	6,780,596	42	5,097,856	46	6,281,950
Scholarship/Fellowship	2	461,274	1	2,600	2	12,600				
Total	88	17,233,442	85	19,501,711	90	13,883,429	99	16,778,631	117	17,500,125
Community & Technical College										
Academic Support	1	4,984					1	50,000		
Institutional Support	1	11,700	1	2,744	1	112,000	1	30,000		
Instruction	6	193,633	4	263,442					1	140,000
Public Service			2	88,999	1	9,900				
Research										
Student Services	1	4,950					1	877		
Total	9	215,267	7	355,185	2	121,900	3	80,877	1	140,000

Grant Proposal Submissions by UAA Units and Functional Categories Fiscal Years 2015 - 2019

Table 5.11

	FY2015		FY2016		FY2017		FY2018		FY2019	
	N	\$	N	\$	N	\$	N	\$	N	\$
Consortium Library										
Academic Support										
Public Service	7	322,289	3	438,996	5	597,453	3	6,122,102	1	5,661,381
Research					1	37,174	2	689,906		
Total	7	322,289	3	438,996	6	634,627	5	6,812,008	1	5,661,381
Athletics / Sport Center										
Public Service	1	4,800								
Facilities & Campus Services										
Institutional Support							1	250,000		
Research									1	514,305
Total							1	250,000	1	514,305
Chancellor Operation										
Instruction	1	40,000								
Public Service	22	2,378,780	23	2,551,964	16	2,201,326	26	4,363,559	28	8,850,051
Research	6	1,570,314	7	831,000	22	7,911,734	17	4,052,116	15	4,807,575
Total	29	3,989,094	30	3,382,964	38	10,113,060	43	8,415,675	43	13,657,626
Provost Operations										
Academic Support	3	2,285,627	1	60,000					1	474,908
Institutional Support			1	20,691	1	707	1	10,000		
Instruction	8	796,749	5	2,340,200	6	5,247,430	4	890,000	8	8,382,002
Public Service	10	8,609,153	11	1,870,200	13	1,605,091	15	1,273,500	18	1,414,213
Research	1	4,750	4	3,538,481	2	59,391	5	2,255,994	3	196,295
Scholarship/Fellowship	2	2,163,900	6	1,060,000	4	703,000	3	44,000	5	667,000
Total	24	13,860,179	28	8,889,572	26	7,615,619	28	4,473,494	35	11,134,418
Senior Vice Provost										
Academic Support	1	6,000								
Public Service	2	14,944	1	1,980						
Research										
Total	3	20,944	1	1,980						
Student Affairs										
Institutional Support					2	67,783				
Public Service	2	83,013			1	65,994				
Student Services	2	1,145,656	3	4,306,533	4	3,900,050	1	67,034		
Total	4	1,228,669	3	4,306,533	7	4,033,827	1	67,034		
University Advancement										
Institutional Support									3	242,641
University Police										
Institutional Support			1	15,000						

Grant Proposal Submissions by UAA Units and Functional Categories Fiscal Years 2015 - 2019

Table 5.11

	FY2015		FY2016		FY2017		FY2018		FY2019	
	N	\$	N	\$	N	\$	N	\$	N	\$
Kenai Peninsula College										
Academic Support	1	11,000								
Institutional Support			1	10,000						
Instruction	2	584,689	3	957,248	4	1,162,110	1	163,253	3	1,247,772
Public Service	1	6,000	3	14,000	1	2,034	1	5,000	2	9,000
Research	1	174,336								
Student Services					1	779,958				
Total	5	776,025	7	981,248	6	1,944,102	2	168,253	5	1,256,772
Kodiak College										
Academic Support	1	12,000								
Institutional Support	2	21,076	1	9,614						
Instruction	3	396,364	2	291,287	1	97,557	2	446,581	1	98,804
Public Service										
Student Services							1	10,000		
Total	6	429,440	3	300,901	1	97,557	3	456,581	1	98,804
Matanuska-Susitna College										
Institutional Support	1	5,000								
Instruction	5	247,932			1	77,294				
Student Services	2	210,824	2	196,972						
Total	8	463,756	2	196,972	1	77,294				
Prince William Sound College										
Academic Support			2	19,775						
Institutional Support	1	1,416	4	71,517	1	64,195				
Instruction	2	160,626	2	90,169	3	8,431,577			5	577,131
Public Service	3	21,320	3	49,225	1	15,533	9	2,873,036		
Research							1	984,142	1	998,000
Student Services			1	17,000	2	80,000			2	89,694
Total	6	183,362	12	247,686	7	8,591,305	10	3,857,178	8	1,664,825
UAA Total										
Academic Support	10	2,706,936	7	404,411	3	584,207	4	130,048	1	474,908
Institutional Support	6	44,192	17	380,116	11	1,080,114	9	1,147,135	11	660,621
Instruction	46	4,506,143	27	12,804,584	28	19,218,927	34	9,889,526	40	13,761,264
Public Service	113	20,734,383	104	10,710,588	107	11,203,088	108	24,008,711	117	25,006,773
Research	243	49,409,868	226	55,647,594	259	54,547,735	268	49,641,157	251	55,442,351
Scholarship/Fellowship	5	2,630,124	8	1,080,140	7	791,569	4	157,388	6	763,161
Student Services	7	1,366,885	9	7,295,096	8	4,802,008	5	88,377	3	131,694
Total	430	81,398,531	398	88,322,529	423	92,227,648	432	85,062,342	429	96,240,772

Source: UAA Research and Graduate Studies Office, compiled by UAA Office of Institutional Research.

Notes:

1. N = number of proposals submitted
2. \$ = amount requested of the proposals
3. Proposals with a status of "Withdrawn" have been excluded.

Average Dollars Contributed per Alumni Donor University of Alaska Anchorage

Table 5.12

Fiscal Year	Undergraduate Alumni	# of Alumni Donors	% Total Alumni Donors	Dollars Contributed	\$ per Donor (Ave. Gift Amount)	Minimum Donation	Maximum Donation
1997 - 98	13,633	28	0.2%	\$3,358	\$120	\$15	\$501
1998 - 99	14,175	25	0.2%	\$5,887	\$235	\$10	\$1,750
1999 - 00	15,000	38	0.3%	\$5,671	\$149	\$6	\$2,100
2000 - 01	15,800	24	0.2%	\$4,048	\$169	\$25	\$650
2001 - 02	17,375	24	0.1%	\$20,619	\$859	\$20	\$2,250
2002 - 03	15,586	171	1.1%	\$43,701	\$256	\$5	\$15,000
2003 - 04	16,080	541	3.4%	\$62,233	\$115	\$5	\$5,000
2004 - 05	24,510	937	3.8%	\$178,672	\$191	\$2	\$50,000
2005 - 06	27,854	671	2.4%	\$83,781	\$125	\$2	\$6,000
2006 - 07	28,264	1,471	5.2%	\$220,529	\$150	\$1	\$26,995
2007 - 08	30,789	1,864	6.1%	\$247,620	\$133	\$1	\$8,666
2008 - 09	33,314	1,632	4.9%	\$202,138	\$124	\$1	\$72,000
2009 - 10	35,839	2,132	5.9%	\$290,036	\$136	\$1	\$32,323
2010 - 11	39,289	2,036	5.2%	\$272,889	\$134	\$1	\$12,906
2011 - 12	41,211	2,042	5.0%	\$374,992	\$184	\$5	\$50,960
2012 - 13	40,083	2,144	5.3%	\$356,601	\$166	\$1	\$25,000
2013 - 14	45,524	1,815	4.0%	\$303,111	\$167	\$1	\$12,630
2014 - 15	46,202	1,627	3.5%	\$394,072	\$242	\$1	\$75,000
2015 - 16	42,603	1,627	3.8%	\$454,491	\$279	\$1	\$75,000
2016 - 17	48,887	1,209	2.5%	\$321,664	\$266	\$1	\$100,000
2017 - 18	54,941	1,182	2.2%	\$460,098	\$389	\$1	\$71,045
2018 - 19	51,600	1,047	2.0%	\$259,802	\$248	\$1	\$20,565

Source: University Advancement Office.

Notes:

- Results do not include trusts and estates.
- Alumni undergraduate total reflects people with current addresses.
- Alumni defined as individuals with conferred UAA degrees/certificates.
- In 2004, Advancement upgraded their historical database which accounts for the dramatic alumni increase.
- In 2014, Advancement researched lost alumni in database which accounts for the alumni increase.
- FY16 alumni with bad addresses and no solicit requests have reduced total alumni count, search for lost alumni was performed in summer 2017.

Donations by Amount and Donor Type University of Alaska Anchorage

Table 5.13

	FY2016-17			FY2017-18			FY2018-19			FY18-FY19
	Donors	Total \$	Avg \$	Donors	Total \$	Avg \$	Donors	Total \$	Avg \$	% Change
\$1 - \$25										
Individual	347	9,254	27	393	11,679	30	482	11,074	23	-22.7%
Group	4	74	18	8	181	23	7	118	17	-25.5%
Total	351	9,328	27	401	11,860	30	489	11,192	23	-22.6%
\$26 - \$50										
Individual	635	35,586	56	496	33,495	68	543	37,260	69	1.6%
Group	15	909	61	20	1,190	60	14	674	48	-19.0%
Total	650	36,495	56	516	34,685	67	557	37,935	68	1.3%
\$51 - \$100										
Individual	610	70,019	115	558	65,907	118	541	63,750	118	-0.2%
Group	43	4,680	109	33	3,288	100	28	3,115	111	11.7%
Total	653	74,699	114	591	69,195	117	569	66,866	118	0.4%
\$101-\$500										
Individual	481	172,424	358	433	150,268	347	515	173,161	336	-3.1%
Group	72	31,452	437	79	36,973	468	95	39,582	417	-11.0%
Total	553	203,876	369	512	187,241	366	610	212,743	349	-4.6%
\$501-\$1,000										
Individual	114	117,254	1,029	119	125,210	1,052	111	132,506	1,194	13.5%
Group	43	39,095	909	28	32,150	1,148	56	64,058	1,144	-0.4%
Total	157	156,349	996	147	157,360	1,070	167	196,564	1,177	10.0%
\$1,001-\$10,000										
Individual	84	309,674	3,687	68	269,562	3,964	70	308,027	4,400	11.0%
Group	77	439,694	5,710	70	484,411	6,920	55	374,255	6,805	-1.7%
Total	161	749,367	4,654	138	753,973	5,464	125	682,282	5,458	-0.1%
\$10,001-\$50,000										
Individual	5	141,566	28,313	5	203,000	40,600	8	191,483	23,935	-41.0%
Group	48	1,469,016	30,604	33	967,375	29,314	39	3,154,181	80,876	175.9%
Total	53	1,610,582	30,388	38	1,170,375	30,799	47	3,345,664	71,184	131.1%
\$50,001-\$100,000										
Individual	1	100,000	100,000	3	182,745	60,915				-100.0%
Group	6	709,352	118,225	9	838,699	93,189				-100.0%
Total	7	809,352	115,622	12	1,021,444	85,120				-100.0%
\$100,001-\$500,000										
Group	6	1,679,899	279,983	5	908,200	181,640				-100.0%
\$500,001+										
Group	3	4,272,120	1,424,040	1	1,400,000	1,400,000	1	1,000,000	1,000,000	-28.6%
Total UAA										
Individual	2,277	885,758	389	2,075	975,959	470	2,270	917,261	404	-14.1%
Group	317	8,641,612	27,261	286	4,669,179	16,326	295	4,635,984	15,715	-3.7%
Total	2,594	9,527,370	3,673	2,361	5,645,138	2,391	2,565	5,553,246	2,165	-9.5%
% Change			49.8%			-34.9%			-9.5%	

Source: University Advancement Office.

UAA Tuition Rate History Fiscal Years 2016 - 2020

Table 5.14

	(in \$ per credit)					% Change	
	FY2016	FY2017	FY2018	FY2019	FY2020	FY16-FY20	FY19-FY20
Anchorage Campus, Kenai Peninsula College, and Matanuska-Susitna College*							
Resident							
Undergraduate							
Lower Division Courses	183	192	202	212	223	21.9%	5.2%
Upper Division Courses	221	232	244	256	269	21.7%	5.1%
Graduate	423	444	466	489	513	21.3%	4.9%
Non-Resident							
Undergraduate							
Lower Division Courses	649	681	715	751	789	21.6%	5.1%
Upper Division Courses	687	721	757	795	835	21.5%	5.0%
Surcharge	466	489	513	539	566	21.5%	5.0%
Graduate	864	907	979	1,028	1,079	24.9%	5.0%
Surcharge	441	463	513	539	566	28.3%	5.0%
Kodiak College							
Resident							
Undergraduate							
Lower Division Courses	161	169	185	204	223	38.5%	9.3%
Prince William Sound College							
Resident							
Undergraduate							
Lower Division Courses	160	168	185	204	223	39.4%	9.3%

Source: Institutions' websites.

* Anchorage Campus, Kenai Peninsula College, and Matanuska-Susitna College share the same lower division course tuition rates.

Definition of Terms

Academic Rank: The rank held by persons having the title of professor, associate professor, and assistant professor; title denotes academic rank exclusively; the title of instructor may also be a title of academic rank at the discretion of the policies and procedures approved for each university.

Academic Year (AY): At UAA and UA, is a 3-term, 12-month period beginning with Summer opening and ending with Spring closing commonly identified by reference to the calendar year in which it ends; e.g. AY 2019 (Also known as AY 18-19) includes Summer 2018, Fall 2018, and Spring 2019. (IPEDS, UA, and UAA IR)

Adjunct Faculty: Faculty with temporary assignments.

Adjusted Cohort: The result of removing any allowable exclusions from a cohort (or sub-cohort). For the Graduation Rates component, this is the cohort from which graduation and transfer-out rates are calculated; for the Fall Enrollment component, it is the cohort for calculating retention rate. Allowable exclusions are students who have died or were permanently disabled, left to serve in the armed forces, left to serve with a foreign aid service of the federal government (e.g. Peace Corp), or left to serve on official church mission.

Admitted Student: Applicant who has been granted an official offer to enroll in a postsecondary institution.

Applied Student: An individual who has fulfilled the institution's requirements to be considered for admission (including payment or waiving of the application fee, if any) and who has been notified of one of the following actions: admission, non-admission, placement on waiting list, or application withdrawn by applicant or institution.

Assistant Professor: At UAA, an appointment criteria for persons who meet the minimum criteria for initial appointment to this rank as follows: Tripartite Academic = Terminal degree in the discipline or appropriate field and evidence of a potential for successful teaching, service, and research / creative activity; Bipartite Academic = Master's degree in the discipline or appropriate field and two years documented successful teaching and service; and Bipartite Vocational Education = Bachelor's degree in the discipline or appropriate field and two years documented successful teaching and / or related work experience beyond the apprentice level in an area directly related to the faculty appointment.

Associate Degree: An award conferred by the Alaska Board of Regents that signifies successful completion of a defined program of study. Note: At UAA, all associate degrees require a minimum of 60 semester hours but no more than 75 semester hours.

Associate Professor: At UAA, criteria for persons who meet the minimum criteria for initial appointment to this rank are as follows: Tripartite Academic = Terminal degree in the discipline or appropriate field and five years successful performance at the rank of assistant professor, including evidence of accomplishment in the area of research / creative activity; Bipartite Academic = Master's degree in the discipline or appropriate field and eight years successful teaching and service in an appropriate institution of higher education and evidence of professional development in the area of teaching or pedagogically related activities or creativity; and Bipartite Vocational Education = Master's degree in the discipline or appropriate field and three years documented successful teaching or Bachelor's degree plus 30 semester hours of systematic study in a closely related discipline.

Auxiliary Enterprises Expenditures: Expenditures for self-supporting operations of the institution that exist to furnish a service to students, faculty, or staff, and that charge a fee that is directly related to, although not necessarily equal to, the cost of the service. Examples include residence halls, food services, student health services, intercollegiate athletics (if self-supporting), college stores, parking.

Auxiliary Services Revenue: Revenues generated by or collected from the auxiliary enterprise operations of the institution that exist to furnish a service to students, faculty, or staff, and that charge a fee that is directly related to, although not necessarily equal to, the cost of the service. Auxiliary enterprises are managed as essentially self-supporting activities.

Baccalaureate Degree: An award conferred by the Alaska Board of Regents that signifies successful completion of a defined program of study that consists of both lower- and upper-division coursework. Traditionally known as a four-year degree. At UAA, all Baccalaureate degrees require a minimum of 120 to 132 semester credits.

Budget: An estimate, often itemized, of expected income and expense for a given period in the future.

Calendar Year: A 12-month time period commencing January 1 and ending December 31.

Campus: A location of an institution that is geographically apart; and is permanent in nature; offers at least 50% of the courses of an educational program leading to a degree, certificate, or other educational credential; has its own faculty and administrative organization; and has its own budgetary and hiring authority. Examples: Anchorage, Mat-Su, Kenai Peninsula, Kodiak, and Prince William Sound.

Certification: A process by which an agency or association grants recognition to an individual who has met certain predetermined qualifications specified by that agency or association.

Capital Improvement Program (CIP) Receipts: CIP receipts are generated by chargeback to capital improvement projects to support CIP personnel service administrative costs.

Class Standing: Class standing is an administrative classification and does not necessarily reflect progress toward completion of a degree. Class standing is based on total credits earned and is used for determining priority registration. (UAA catalog)

Clerical and Secretarial: A primary function or occupational activity category used to classify persons whose assignments typically are associated with clerical activities or are specifically of a secretarial nature. Includes personnel who are responsible for internal and external communications, recording and retrieving of data (other than computer programmer) and/or information and other paperwork required in an office. (IPEDS)

Cohort: A specific group of students established for tracking purposes. (IPEDS)

College: An aggregation of two or more academic departments into a major academic organizational unit. Its primary purposes are to provide governance, resource management and planning support for carrying out instruction, research and public service functions, and offering programs. A college is typically supervised by a dean who exercises authority and responsibility over all permanent and temporary faculty and staff assigned to departments under the college's jurisdiction. At UAA, there are five academic colleges. (UAA, UAA IR)

Community Campus: A location of an institution that is geographically apart and independent of the main campus and (1) is permanent in nature; (2) offers at least 50% of the courses of an educational program leading to a degree, certificate, or other educational credential; (3) has its own faculty and administrative organization; and (4) has its own budgetary and hiring authority. Within UAA, a community campus is supervised by a Director with emphasis on administrative and academic functions although also has responsibility for site and facilities. At UAA, campuses also offer programs of study leading to certificates and associate degrees. (UAA, UAA IR)

Course: A defined subset of instructional activity in which students enroll to acquire knowledge and/or complete graduation requirements. Each course is identified by a unique combination of two fields: Discipline (or its course prefix equivalent) and course number (an indicator of subject matter level). (UAA IR)

Course Level: The course number indicates the course level. Developmental courses are typically numbered 050 to 099, lower division courses are numbered 100 to 299, upper division courses are numbered 300 to 499, professional courses are numbered 500 to 599, and graduate courses are numbered 600 and above.

Credit Hour: A unit of measure representing an equivalent of an hour (50 minutes) of instruction per week over the entire term. It is applied toward the total number of credit hours needed for completing the requirements of a degree, diploma, certificate or other formal award. (IPEDS)

Degree: An award conferred by the Alaska Board of Regents as official recognition for the successful completion of a program of study.

Degree Seeking: At UAA, a student declares a degree-seeking intent by applying for and meeting university admission requirements to a degree or certificate program. They may apply for admission as undeclared majors and still be considered as degree seeking.

Department: A university-defined administrative organizational unit that organizes resources for creation and dissemination of knowledge within associated disciplines. Academic departments are responsible for creating, offering, and evaluating courses, and providing instructional and research support to faculty who work in the disciplines.

Developmental Course: Course that provides basic or supplemental preparation for introductory college courses. This type of course is not applicable to certificate or associate, baccalaureate or graduate degree, even by petition. Courses are numbered from 050 to 099.

Discipline: A defined subset of knowledge and inquiry within the universe of knowledge as classified by the National Classification of Instructional Program (CIP). (UAA IR)

Doctoral Degree: The highest award a student can earn for graduate study. The Doctoral degree includes such degrees as Doctor of Education and the Doctor of Philosophy in many fields of study. (IPEDS)

Enrollment: A duplicate count of students enrolled ("seats occupied") in all course section offerings (credit or non-credit) on the official census date of each term. The same student is counted in each section of official enrollment; e.g. a student enrolled in 3 class sections is counted as 3 enrollees. (UAA IR)

Executive, Administrative, and Managerial: Professional staff whose assignments require primary (and major) responsibility for management of the institution or a customarily recognized department or subdivision thereof. Assignments require the performance of work directly related to management policies or general business operations of the institution. It is assumed that assignments in this category customarily and regularly require the incumbent to exercise discretion and independent judgment and to direct the work of others. (IPEDS)

Extended Site: A site or center outside the confines of the parent institution where courses are offered that are part of an organized program at the parent institution. The site is not considered to be temporary, but may be rented or made available to the institution at no cost by another institution or an organization, agency, or firm. Traditionally, a physical site located away from the main campus, e.g., Chugiak / Eagle River, military education centers, etc. where students gather to receive instruction from university-affiliated faculty. (UAA, IPEDS)

Faculty Workload: Permanent and term faculty are awarded a workload with five (5) part assignments. Tripartite faculty assignments are generally three parts instructional (0.6 FTE), one part research (0.2 FTE), and one part service (0.2 FTE). Bipartite assignments are four parts instructional (0.8 FTE) and one part service (0.2 FTE).

Federal Receipts: All revenue received from the federal government. These include restricted federal grants from such agencies as the National Science Foundation, Department of Health and Human Services, National Institutes of Health, and other federal agencies, as well as additional federal funding for student financial aid and work-study programs.

Financial Aid: Federal Work Study, grants, loans to students (government and/or private), assistantships, scholarships, fellowships, tuition waivers, tuition discounts, employer aid (tuition reimbursement) and other monies (other than from relatives/friends) provided to students to meet expenses. This excludes loans from parents.

First-Time Freshman: A degree-seeking student who enrolls in an institution with no prior postsecondary experience. Includes students enrolled in academic or occupational programs. Also includes students enrolled in the fall term who attended college for the first time in the prior summer term, or students who entered with advanced standing (college credits earned before graduation from high school), or Middle College School. (UAA IR)

Fiscal Year (FY): A 12-month period for maintaining financial records. Generally, the State of Alaska FY begins on July 1 and ends the following June 30. The federal fiscal year starts October 1 and ends September 30. (UAA IR)

Freshman: Admitted, first-time, continuing or returning first-year undergraduate student who has successfully completed, either at this university or approved credit from another college/university, a total of 29 credit hours or less. Excludes audit credit. (UAA IR)

Full-Time Equivalent Students (FTES): A single value providing a meaningful combination of full-time and part-time students. The convention used for calculation is annual Student Credit Hours (SCH) divided by 30 or 24 credit hours for undergraduate and graduate students respectively. If FTES is calculated for a single semester, then the divisor used is 15 or 12 credit hours for undergraduate and graduate students respectively. An additional convention sometimes used by UAA IR is total full-time students plus one-third part-time students. (IPEDS) This calculation is used where SCH are not available.

Full-Time Student: An undergraduate student who is enrolled at UAA for 12 or more credits or a graduate student enrolled at UAA for 9 or more 600 level credits is classified as full-time. Audited courses, credit-by-examination courses, continuing education units (CEUs) and professional development courses (500 level) are not included in the computation for full-time status.

General Fund Appropriations: Legal authority to expend resources received by an institution through acts of a legislative body, except grants and contracts. These funds are for meeting current operating expenses and not for specific projects or programs. The most common example is a state's general appropriation. For UAA, this is the State of Alaska's appropriation to the university system.

Grade: A university-recognized symbol used to signify a student's academic performance and / or document actions taken by the university relative to a student in a particular class section. See UAA catalog for specific grading information. (UAA IR)

Graduate Certificate: A graduate-level certificate program is a coherent sequence of related graduate courses between 12 to 19 credit hours. These programs are designed to provide graduate education past the baccalaureate level and / or to enhance the education of students who already have a master's degree. (UAA Catalog)

Graduate Level Courses: Graduate-level courses require a background in the discipline and an ability to contribute to written and oral discourse on advanced topics in the field at a level beyond that required by a bachelor's degree. Graduate courses have course numbers of 600 - 699.

Graduate Student: A student who holds a baccalaureate degree and is admitted/accepted to a graduate program at UAA and enrolled in graduate level (600+) courses.

Graduation Rate: The percentage of first-time, full-time undergraduate certificate- and degree-seeking students enrolled in a given fall semester who earn a degree within six years (150% of the time to complete a four-year degree) or three years (150% of the time to complete a two-year degree). This rate is required for disclosure and/or reporting purposes under the Student Right-To-Know Act and is defined by the US Department of Education. (IPEDS)

Grants and Contracts: Revenues from governmental agencies and nongovernmental parties that are for specific research projects, other types of programs, or for general institutional operations (if not governmental appropriations). Examples include research programs, training programs, student financial assistance, Pell Grants, etc. for which amounts are received or expenses are reimbursable under the terms of a grant or contract. (IPEDS)

Headcount: An unduplicated count of unique individuals (in total or in a cohort) who are enrolled at UAA in credit courses on the official semester / term census date. The unduplicated count can be for a single semester or an academic year.

Institutional Support: A functional expense category that includes expenses for the day-to-day operational support of the institution. Includes expenses for general administrative services, central executive-level activities concerned with management and long range planning, legal and fiscal operations, space management, employee personnel and records, logistical services such as purchasing and printing, and public relations and development. Also includes information technology expenses related to institutional support activities. If an institution does not separately budget and expense information technology resources, the IT costs associated with student services and operation and maintenance of plant will also be applied to this function. (IPEDS)

Instructional Expenditure: A functional expenditure category that includes expenditures of the colleges, schools, departments, and other instructional divisions of the institution and expenditures for departmental research and public service that are not separately budgeted. Includes expenditures for both credit and non-credit activities.

Instructor: Initial appointment criteria for persons who meet the minimum criteria to this rank are as follows: Tripartite Academic = competence in the profession or discipline and ability to effectively communicate training and subject matter to others. Appointees will hold minimal credentials; Bipartite Academic = competence in the profession or discipline and ability to effectively communicate training and subject matter to others. Appointees will hold minimal credentials; Bipartite Vocational Education = competence in the profession or discipline and ability to effectively communicate training and subject matter to others. Appointees will hold credentials. (Faculty Services)

Junior: An admitted undergraduate student who has successfully completed, either at this university or approved credit from another college/university, a total of 60-89 credit hours. Excludes audit credit. (UAA IR)

Lower Division Course: This type of course is usually a foundation course which introduces a field of knowledge or connects the foundation with advanced work in a given field. Courses are typically numbered between 100 and 299. Lower division courses are usually taken by freshmen and sophomores.

Major: A field of knowledge and inquiry a student may pursue as a primary interest focus. Although non-admitted students may take coursework associated with a major, only admitted students may formally declare a major. (UAA, UAA IR)

Master's Degree: An award conferred by the Alaska Board of Regents that signifies successful completion of a program of study consisting of courses/experiences above the baccalaureate degree of at least 30 semester credits beyond the baccalaureate degree and at least 21 of those credits must be at the graduate course level. (UAA, UAA IR)

Minor: A field of knowledge and inquiry a student may pursue as a secondary interest focus. Minors are usually not required elements in a program of study, no degrees are awarded in a minor, and it must be earned in conjunction with a baccalaureate. (UAA)

Non-Credit Course: Courses offered as career development, adult basic education, continuing education or community interest instruction. Not applicable to any degree or certificate requirements (even by petition). They have no regular tuition but do have other special fees. These courses are number from 001 to 049.

Non-Degree Seeking (NDS): A student enrolled in courses for credit who is not recognized by the institution as seeking a degree or formal award. A student who has not formally declared intention of earning a degree from this university. A NDS student may be concurrently enrolled in high school, or be NDS at one campus and degree seeking at another. (IPEDS, UAA IR)

Occupational Endorsement Certificate (OEC): Certificate requiring 9 to 29 hours to complete. This certificate provides specialized knowledge and skills needed in specific employment sectors.

Opening / Closing Freeze: The official dates set by the university state system each Fall, Spring and Summer terms when the university extracts ("freezes") data elements from UA system source data files for use in preparing official comparable management information for internal and external use. Opening / closing freeze dates vary by type of data file, e.g. student, finance, human resources. (UAA IR)

Origin at Entry: Origin at entry is the location of a student when first enrolling at the university: city for students from Alaska, state for students from outside Alaska, and country for international students. (UA, UAA IR)

Part-Time Student: An undergraduate student with a term credit load of 1-11 semester credits or a graduate student with a term credit load of 1-8 semester credit hours of 600 level courses during a particular semester. (IPEDS, UAA IR)

Post-Baccalaureate Student: A student with a bachelor's degree admitted to and enrolled in a post-baccalaureate certificate program.

Post-Baccalaureate Certificate: An award that requires completion of an organized program of study beyond the bachelor's. It is designed for persons who have completed a baccalaureate degree, but does not meet the requirements of a master's degree. (IPEDS)

Pre-Major: Assigned to students who have been accepted for general admission to the degree level of their desired program but have not yet been formally accepted to a specific program. Usually they remain in this status while completing program prerequisites and/or department-level admission processes. Pre-majors have class standing and may be eligible for financial aid and international student visas. (UAA, UAA IR)

Professor: At UAA, an appointment criteria (an extraordinary event) for persons who meet the minimum criteria for initial appointment to this rank are as follows: Tripartite Academic and Bipartite Academic = May be appointed based on exemplary academic performance. Terminal degree in the discipline or appropriate field and national or international reputation for excellence. Bipartite Vocational Education = May be appointed based on exemplary academic performance and Master's degree in vocational education and six years outstanding documented teaching and / or professional experience beyond the apprentice level or a national or international reputation for excellence in the discipline. Promotion criteria are as follows: Tripartite Academic = Terminal degree in the discipline or appropriate field and evidence of exemplary teaching, service and research/creative activity and five years at the rank of associate professor, of which three must be at this university; Bipartite Academic = Terminal degree in the discipline or appropriate field and evidence of exemplary teaching and service and five years at the rank of associate professor of which three must be at this university. Note: Master's degree shall be considered the terminal degree for former community college faculty who transferred to this university under 1987 BOR policy. (Faculty Services)

Program: Requires three components: a discipline or major (e.g., Psychology, Mathematics, International Studies); a degree or certificate level (e.g. Associate, Bachelors, Masters); and degree type (e.g. Associate of Applied Science, Bachelor of Arts).

Race/Ethnicity: Categories developed by the U.S. Office of Management and Budget (OMB) that are used to describe groups to which individuals belong, identify with, or belong in the eyes of the community. The designations are used to categorize U.S. citizens, resident aliens, and other eligible non-citizens. Individuals are asked to first designate ethnicity as: Hispanic or Latino or Not Hispanic or Latino. Second, individuals are asked to indicate one or more races that apply among the following: American Indian or Alaska Native, Asian, Black or African American, Native Hawaiian/Pacific Islander, White. (IPEDS) Where an individual chooses more than one race and it includes Alaska Native, that individual is included in an Alaska Native Multirace at UAA.

Regular/Term Assignment: Individuals who are hired as permanent employees of the university and are eligible to receive salary and all benefits to perform their designated job duties. Term-funded employees can be regular employees. Their appointment is typically to an academic unit for an academic year. They are generally regarded as having a continuing appointment. (HRS)

Revenue: The inflow of resources or other enhancement of net assets of an institution or settlements of its liabilities from delivering or producing goods, rendering services, or other activities that constitute the institution's ongoing major or central operations. Includes revenues from fees and charges, auxiliary enterprises, and contributions and other non-exchange transactions. (IPEDS)

Semester: A calendar system that consists of two sessions called semesters during the academic year with about 15 weeks of instruction. (IPEDS)

Senior: An admitted undergraduate student who has successfully completed, either at this university or approved credit from another college / university, a total of 90+ credit hours. Excludes audit credit. (UAA IR)

Sophomore: An admitted undergraduate student who has successfully completed, either at this university or approved credit from another college / university, a total of 30-59 credit hours. Excludes audit credit. (UAA IR)

State and Local Grants: State and local monies awarded to the institution under state and local student aid programs, including the state portion of State Student Incentives Grants (SSIG).

Student: Any person for whom the university maintains an educational record and meets one or more of the following criteria: (1) officially enrolled in a course (credit or non-credit) offered under university authority, (2) is on an approved student exchange, internship, or other program of study. (UAA IR)

Student Assistant: Student who is employed by this university, predominantly through Work Study funds, to perform a variety of non-professional assignments in support of the university. (UAA IR)

Student Credit Hour (SCH): The total credit hours awarded to students during a given period. In fixed credit courses, it is the sum of the product of course section credit times the course section enrollment.

Student Fee: Amounts charged to students for items or services not covered by tuition or course fees; e.g. Student Health Center fee, application fee. (UAA IR)

Student Services Expenditure: A functional expenditure category that includes expenditures for admissions, registrar activities, and activities whose primary purpose is to contribute to students' emotional and physical well-being and to their intellectual, cultural, and social development outside the context of their formal instructional program; e.g. student activities, student newspaper, intramural athletics, student organizations and student records. (IPEDS)

Summer Session: A summer session is shorter than a regular semester. The institution may have two or more sessions occurring in the summer months.

Technical/Paraprofessional: A primary function or occupational activity category used to classify persons whose assignments require specialized knowledge or skills which may be acquired through experience, apprenticeship, on-the-job-training, or academic work in occupationally specific programs that result in a 2-year degree or other certificate or diploma. Includes persons who perform some of the duties of a professional in a supportive role, which usually requires less formal training and/or experience than normally required for professional status.

Temporary Employee: Casual labor, adjunct faculty, and employees who do not work in a budgeted position.

Tenure: Status of a personnel position with respect to permanence of the position according to the terms of Alaska Regents Policy 04.04.040(B). Its purpose is to assure an environment that will nurture academic freedom by providing employment security. At UAA, qualitative criteria for tenure are determined by individual schools and colleges. Faculty with initial appointment to full professor are awarded tenure at the time of appointment. Initial appointments to associate professor may be made with / without tenure but the latter must be reviewed for tenure no later than the 4th consecutive year of service. All non-tenured assistant professor appointees must be reviewed for tenure no later than the 7th consecutive year of service. Tenure may be awarded to faculty holding the rank of instructor, and time in the rank of instructor shall count toward tenure. Faculty who are not awarded tenure by the end of their mandatory year of review shall be offered a terminal appointment for one additional year of service. (BOR, IPEDS, Faculty Services)

Tenure Track: Faculty who are eligible to apply for tenure.

Tuition: The amount of money charged to students for instructional services. Tuition may be charged per semester or session, per course, or per credit and may vary.

UA Receipts: Private unrestricted gifts, grants, contracts, endowment revenue, sales and services of educational activities, vending machine revenue, rent, athletic ticket sales, etc. (UAA IR)

UA Scholar: A resident student attending an Alaska high school who is recruited by the UA system and offered a scholarship for placing in the top ten percent of his / her graduating class, regardless of graduating class size, based on GPA at the end of their junior year. The number of UA Scholars in a reported term is defined as the sum of the following three internal classification levels: (1) Paid UA Scholar—all enrolled students receiving a UA Scholar distribution in the reported term; (2) Non-Paid UA Scholar—paid in past term but not in reported term; and (3) Non-Paid Eligible Scholar—Never paid but eligible in reported term. (UAA IR)

Undergraduate Certificate: A formal award certifying the satisfactory completion of a postsecondary education program as approved by the Alaska Board of Regents. Requires a minimum of 30 and a maximum of 60 semester credit hours.

Undergraduate Student: A student enrolled in a bachelor's degree program, an associate's degree program, or certificate program below the baccalaureate.

University of Alaska Anchorage (UAA): One of the post-secondary institutions of the University of Alaska statewide system of public higher education. It is accredited by the Northwest Commission on Colleges and Universities, which is recognized by the U.S. Department of Education.

Upper Division Course: Upper division courses require a background in the discipline recognized through course prerequisites, junior or senior standing, or competency based requirements. Course with numbers between 300 to 499. Upper division courses are usually taken by juniors and seniors.

Workforce Credentials: A non-credit credential (or certification) that is aligned with national standards or with a recognized certification/license or meets an industry-specific employment standard.