

STUDENT INFORMATION

UNIVERSITY OF ALASKA ANCHORAGE
OFFICE OF INSTITUTIONAL RESEARCH

SUMMER 2012 CLOSING

H I G H L I G H T S

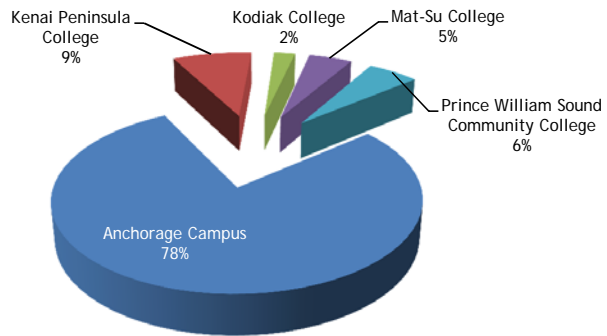
Summer 2012 Compared to Summer 2011: Credit Headcount and Student Credit Hours

	STUDENT HEADCOUNT	STUDENT CREDIT HOURS					
		Total	Dev	Lower	Upper	Prof	Graduate
TOTAL UAA CAMPUSES							
Summer 2012	8,042	38,630	1,508	24,050	7,327	3,567	2,179
Summer 2011	8,642	40,043	1,694	24,771	7,554	3,851	2,174
% Change '11-12	-6.9%	-3.5%	-11.0%	-2.9%	-3.0%	-7.4%	0.2%
ANCHORAGE CAMPUS							
Summer 2012	6,931	32,196	897	18,395	7,318	3,408	2,179
Summer 2011	7,273	33,418	1,053	19,182	7,417	3,592	2,174
% Change '11-12	-4.7%	-3.7%	-14.8%	-4.1%	-1.3%	-5.1%	0.2%
KENAI PENINSULA COLLEGE							
Summer 2012	832	3,237	444	2,721	3	69	
Summer 2011	807	3,040	373	2,455	103	109	
% Change '11-12	3.1%	6.5%	19.0%	10.8%	-97.1%	-36.7%	
KODIAK COLLEGE							
Summer 2012	232	733		664	6	63	
Summer 2011	217	648		568	10	70	
% Change '11-12	6.9%	13.1%		16.9%	-40.0%	-10.0%	
MAT-SU COLLEGE							
Summer 2012	419	1,912	125	1,787			
Summer 2011	441	1,847	185	1,638	24		
% Change '11-12	-5.0%	3.5%	-32.4%	9.1%	-100.0%		
PRINCE WILLIAM SOUND CC							
Summer 2012	214	552	42	483		27	
Summer 2011	518	1,091	83	928		80	
% Change '11-12	-58.7%	-49.4%	-49.7%	-48.0%		-66.3%	

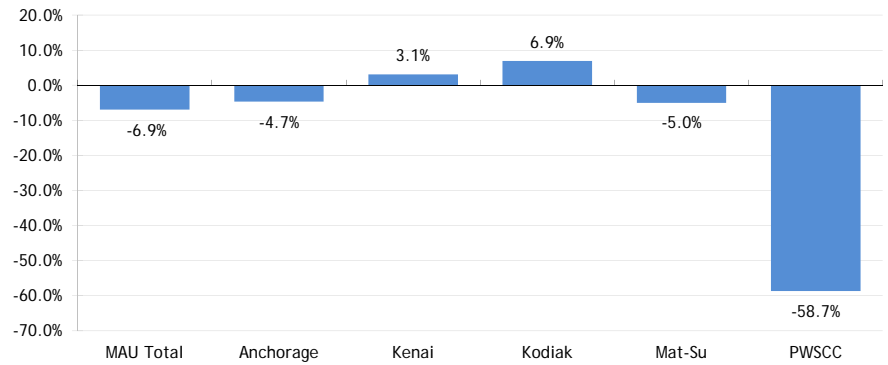
NOTES:

1. Headcount represents students enrolled in credit courses at the 050 level and above, including auditors.
2. Student Credit Hours does not include auditors.
3. Devel= 050-099 courses, Lower = 100-299, Upper = 300-499, Prof = 500-599. Graduate = 600+

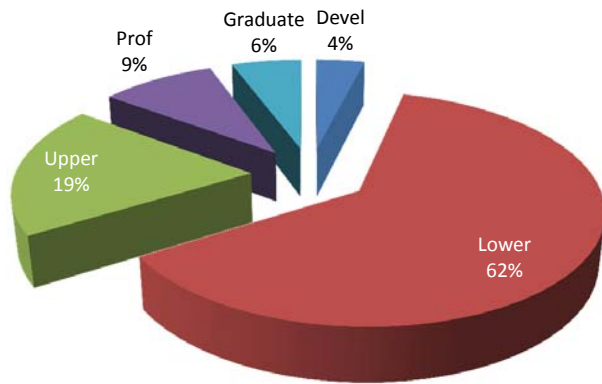
Credit Headcount by Campus
Summer 2012



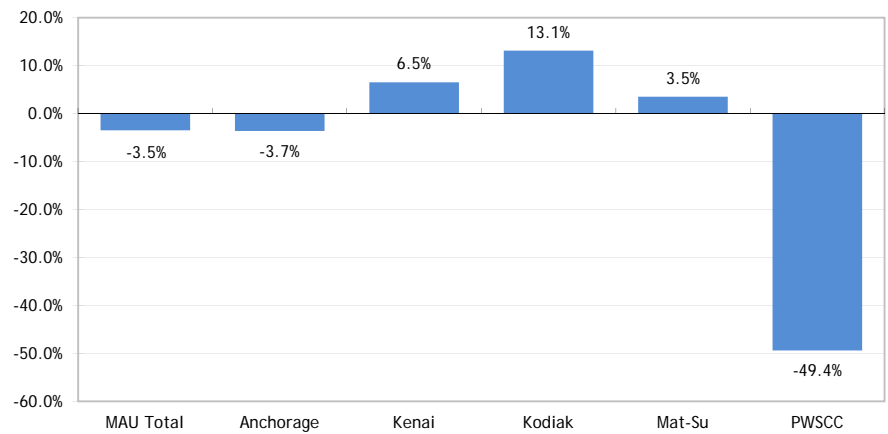
% Change in Credit Headcount
Summer 2011 to Summer 2012



UAA Student Credit Hours by Course Level
Summer 2012



% Change in Student Credit Hours
Summer 2011 to Summer 2012



Summer 2012 Closing Summary: Headcount, Credit Hours, Student FTE, and Course Sections

		MAU		Kenai			
		Total	Anchorage	Peninsula	Kodiak	Mat-Su	Prince Wm
STUDENT HEADCOUNT							
Total Credit Headcount		8,042	6,931	832	232	419	214
Full-time Headcount		597	472	13	1	16	1
Part-time Headcount		7,445	6,459	819	231	403	213
Full-time as a % of Total		7.4%	6.8%	1.6%	0.4%	3.8%	0.5%
ALL STUDENTS		8,697	6,993	904	243	461	686
CREDIT HOURS							
Developmental	(050 - 099)	1,507.5	897.0	444.0		125.0	41.5
Lower Division	(100 - 299)	24,049.5	18,394.5	2,721.0	664.0	1,787.0	483.0
Upper Division	(300 - 499)	7,326.5	7,317.5	3.0	6.0		
Professional	(500 - 599)	3,567.0	3,408.0	69.0	63.0		27.0
Graduate	(600 - 699)	2,179.0	2,179.0				
TOTAL CREDIT HOURS		38,629.5	32,196.0	3,237.0	733.0	1,912.0	551.5
Audited Hours		271.0	228.0	9.0	13.0	16.0	5.0
ENROLLMENT (Seat Count)							
Developmental	(050 - 099)	551	311	149		48	43
Lower Division	(100 - 299)	8,368	6,411	909	239	629	180
Upper Division	(300 - 499)	2,484	2,478	3	3		
Professional	(500 - 599)	2,470	2,392	23	28		27
Graduate	(600 - 699)	832	832				
TOTAL ENROLLMENT		14,705	12,424	1,084	270	677	250
STUDENT FTE							
Undergraduate FTE		2,192.2	1,773.9	211.2	44.7	127.5	35.0
Graduate FTE		478.8	465.6	5.8	5.3		2.3
TOTAL STUDENT FTE		2,671.1	2,239.5	217.0	49.9	127.5	37.2
COURSE SECTIONS							
Developmental	(050 - 099)	40	16	10		4	10
Lower Division	(100 - 299)	561	380	66	20	65	30
Upper Division	(300 - 499)	193	191	1	1		
Professional	(500 - 599)	198	190	1	5		2
Graduate	(600 - 699)	127	127				
Adult Basic Ed	(ABE)	5		1	1		3
Continuing Ed Units	(CEU)	7	2	2		2	1
Non-credit	(NCR)	15	1	1		2	11
TOTAL COURSE SECTIONS		1,146	907	82	27	73	57
Cancelled Credit Course Sections		62	42	6	1	10	3

NOTES:

1. Numbers reflect data extracted from Banner Student Information System.
2. "Headcount" includes auditors. It is unduplicated within each unit.
3. "All Students" includes non credit students it is unduplicated at the campus level, however duplication may occur between campuses.
4. "Course Sections" do not include cancelled sections.
5. "Audited Hours" are not included in student credit hours.

UAA Summer 2012 Closing Headcount by Student Level and Characteristic

	UAA MAU Total		Graduate		Undergraduate	
	N	% of Total	N	% of Total	N	% of Total
UAA Total	8,042	100%	540	100%	7,502	100%
Class Standing						
First-time Freshman	128	1.6%			128	1.7%
Freshman	889	11.1%			889	11.9%
Sophomore	1,015	12.6%			1,015	13.5%
Junior	885	11.0%			885	11.8%
Senior	1,700	21.1%			1,700	22.7%
Graduate	477	5.9%	477	88%		
Post/Licensure	74	0.9%	63	12%	11	0.1%
Non Degree Seeking	2,387	29.7%			2,387	31.8%
Other MAU Prog.	487	6.1%			487	6.5%
Full-time by Gender						
Female	376	4.7%	24	4.4%	352	4.7%
Male	221	2.7%	15	2.8%	206	2.7%
Unspecified						
Total	597	7.4%	39	7.2%	558	7.4%
Part-time by Gender						
Female	4,983	62.0%	362	67.0%	4,621	61.6%
Male	2,443	30.4%	139	25.7%	2,304	30.7%
Unspecified	19	0.2%			19	0.3%
Total	7,445	92.6%	501	92.8%	6,944	92.6%
Ethnicity						
African Am.	416	5.2%	21	3.9%	395	5.3%
Alaska Native	580	7.2%	17	3.1%	563	7.5%
Am. Indian	228	2.8%	12	2.2%	216	2.9%
Asian	641	8.0%	31	5.7%	610	8.1%
Hispanic	466	5.8%	18	3.3%	448	6.0%
Native Hawaiian	129	1.6%	4	0.7%	125	1.7%
Minority Total	2,243	27.9%	96	17.8%	2,147	28.6%
Non Hisp White	5,630	70.0%	450	83.3%	5,180	69.0%
Race Unknown	154	1.9%	3	0.6%	151	2.0%
Not Reported	686	8.5%	21	3.9%	665	8.9%
Age Group						
0 - 17	60	0.7%			60	0.8%
18 - 18	102	1.3%			102	1.4%
19 - 19	290	3.6%			290	3.9%
20 - 24	2,378	29.6%	26	4.8%	2,352	31.4%
25 - 29	1,589	19.8%	137	25.4%	1,452	19.4%
30 - 39	1,625	20.2%	176	32.6%	1,449	19.3%
40 - 49	993	12.3%	110	20.4%	883	11.8%
50 - 59	756	9.4%	72	13.3%	684	9.1%
60 & Over	249	3.1%	19	3.5%	230	3.1%
Unspecified						
Mean	32.1		37.3	0.1	31.8	0.4%
Median	28.0		35.0	0.1	28.0	0.4%

UAA Summer 2012 Closing Headcount by Student Level and Characteristic

	UAA MAU Total		Graduate		Undergraduate	
	N	% of Total	N	% of Total	N	% of Total
Region of Origin						
In_State	7,191	89.4%	477	88.3%	6,714	89.5%
Out_of_State	622	7.7%	49	9.1%	573	7.6%
Foreign	208	2.6%	13	2.4%	195	2.6%
Not_Reported	21	0.3%	1	0.2%	20	0.3%
Primary Degree Type						
One Year	46	0.6%			46	0.6%
Two Year	1,258	15.6%			1,258	16.8%
Four Year	3,312	41.2%			3,312	44.1%
Master Programs	477	5.9%	477	88.3%		
Licensure/Post Certificate	74	0.9%	63	11.7%	11	0.1%
Non Degree/Other Program	2,875	35.7%			2,875	38.3%
Attempted Hours						
0 - 2	1,439	17.9%	96	17.8%	1,343	17.9%
3 - 5.9	3,518	43.7%	311	57.6%	3,207	42.7%
6 - 8.9	1,820	22.6%	94	17.4%	1,726	23.0%
9 - 11.9	698	8.7%	37	6.9%	661	8.8%
12 - 14.9	441	5.5%	2	0.4%	439	5.9%
15 & Over	126	1.6%			126	1.7%

NOTES:

1. Total UAA includes Anchorage, Kenai, Kodiak, Mat-Su, and PWSCC.
2. Headcount includes students enrolled in credit courses at the 050 level and above, including auditors.
3. Percentages may not add to 100 due to rounding.
4. The following definition was used for first-time freshman:
 Student admitted with an admit code of "FT" (first-time admitted), and having a student type of "F" (first-time enrolling), or a student type of "C" (continuing enrollment)--for those continuing to Fall from Summer. The current semester is the first time the student has ever attended an institution of higher education. Except, the student could have been first-time in Summer semester and continued into Fall, and still be a first-time freshman. First-time Freshman also includes current high school students who may have taken courses for credit previously.
5. Other Program=Non UAA Programs
6. Ethnicity may be duplicated for students who identify themselves in multiple ethnicity/race categories. The Total Minority is an unduplicated number therefore, it will not necessarily equal the sum of all categories.

Total UAA Headcount Trend by Student Characteristic

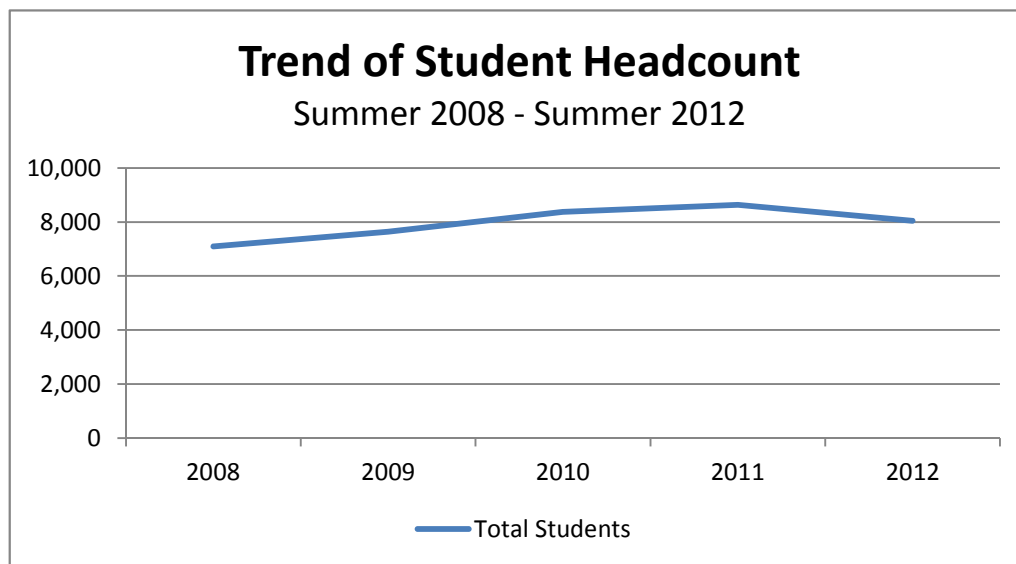
Student Characteristic	Summer Semester Closing					% Change	
	2008	2009	2010	2011	2012	08-12	11-12
Total Students	7,102	7,646	8,374	8,642	8,042	13.2%	-6.9%
Class Standing							
First-time Freshman	76	122	142	181	128	68.4%	-29.3%
Freshman	627	686	865	946	889	41.8%	-6.0%
Sophomore	748	829	933	1,004	1,015	35.7%	1.1%
Junior	766	756	867	869	885	15.5%	1.8%
Senior	1,466	1,439	1,556	1,643	1,700	16.0%	3.5%
Graduate	395	474	2,963	475	477	20.8%	0.4%
Licensure/Post Certificate*	49	65	92	96	74	51.0%	-22.9%
Non Degree Seeking	2,627	2,811	449	2,892	2,387	-9.1%	-17.5%
Other Programs	348	464	507	536	487	39.9%	-9.1%
Full-time by Gender							
Female	370	351	395	391	376	1.6%	-3.8%
Male	152	132	165	208	221	45.4%	6.3%
Unspecified							
Total	522	483	560	599	597	14.4%	-0.3%
Part-time by Gender							
Female	4,426	4,856	5,131	5,265	4,983	12.6%	-5.4%
Male	2,139	2,288	2,656	2,751	2,443	14.2%	-11.2%
Unspecified	15	19	27	27	19	26.7%	-29.6%
Total	6,580	7,163	7,814	8,043	7,445	13.1%	-7.4%
Age Groups							
17 & Under	65	89	60	84	60	-7.7%	-28.6%
18 - 18	81	105	130	123	102	25.9%	-17.1%
19 - 19	248	286	275	298	290	16.9%	-2.7%
20-24	2,117	2,183	2,336	2,432	2,378	12.3%	-2.2%
25-29	1,268	1,297	1,613	1,620	1,589	25.3%	-1.9%
30-39	1,359	1,483	1,636	1,742	1,625	19.6%	-6.7%
40-49	1,065	1,105	1,198	1,190	993	-6.8%	-16.6%
50-59	731	838	914	868	756	3.4%	-12.9%
60 & Over	160	257	208	272	249	55.6%	-8.5%
Unspecified	8	3	4	13		-100.0%	-100.0%

Total UAA Headcount Trend by Student Characteristic

Student Characteristic	Summer Semester Closing					% Change	
	2008	2009	2010	2011	2012	08-12	11-12
Total Students	7,102	7,646	8,374	8,642	8,042	13.2%	-6.9%
Primary Degree Type							
One Year	13	54	55	42	46	253.8%	9.5%
Two Year	737	995	1,172	1,352	1,258	70.7%	-7.0%
Four Year	2,697	2,783	3,136	3,249	3,312	22.8%	1.9%
Master Programs	392	474	449	475	477	21.7%	0.4%
Licensure/Post Certificate*	64	65	92	96	74	15.6%	-22.9%
Non Degree/Other Program	3,199	3,275	3,470	3,428	2,875	-10.1%	-16.1%
Attempted Hours							
0 - 2.9	1,445	1,567	1,701	1,824	1,439	-0.4%	-21.1%
3 - 5.9	3,138	3,444	3,693	3,640	3,518	12.1%	-3.4%
6 - 8.9	1,430	1,585	1,726	1,892	1,820	27.3%	-3.8%
9 - 11.9	600	591	726	720	698	16.3%	-3.1%
12 - 14.9	346	336	403	427	441	27.5%	3.3%
15 & Over	143	123	125	139	126	-11.9%	-9.4%

NOTE:

1. Total UAA is an unduplicated credit headcount at MAU Level.
2. Headcount includes students enrolled in credit courses at the 050 level and above, with auditors.
3. See page 5 for First-time Freshman definition.
4. In early years, the "Licensure/Post Certificate" under Class Standing differs from that under Primary Degree Type. This is due to changes made over the years in defining it between degree and nondegree categories.



UAA Summer 2012 Closing Headcount by Student Characteristic by Campus

	UAA Total	% of Total	Anchorage	Kenai Peninsula	Kodiak	Mat-Su	Prince Wm
Total Headcount	8,042	100.0%	6,931	832	232	419	214
Class Standing							
First-time Freshman	128	1.6%	92	8		7	3
Freshman	889	11.1%	645	53	6	55	21
Sophomore	1,015	12.6%	779	39	14	53	11
Junior	885	11.0%	738	16	11	16	6
Senior	1,700	21.1%	1,541	26	2	21	4
Graduate	477	5.9%	475				
Licensure/Post Certificate	74	0.9%	72				
Non Degree Seeking	2,387	29.7%	2,007	88	46	45	56
Other Programs	487	6.1%	582	602	153	222	113
Full-time by Gender							
Female	376	4.7%	311	2		5	
Male	221	2.7%	161	11	1	11	1
Unspecified							
Total	597	7.4%	472	13	1	16	1
Part-time by Gender							
Female	4,983	62.0%	4,337	553	169	236	134
Male	2,443	30.4%	2,107	262	62	167	77
Unspecified	19	0.2%	15	4			2
Total	7,445	92.6%	6,459	819	231	403	213
Ethnicity							
African Am.	416	5.2%	386	34	6	15	3
Alaska Native	580	7.2%	497	63	25	25	19
Am. Indian	228	2.8%	199	21	4	23	5
Asian	641	8.0%	591	47	31	18	7
Hispanic	466	5.8%	412	46	15	21	8
Native Hawaiian	129	1.6%	119	11	9	4	
Minority Total	2,243	27.9%	2,002	202	83	92	38
Non Hisp White	5,630	70.0%	4,905	546	152	316	126
Race Unknown	154	1.9%	131	9	2	6	11
Not Reported	686	8.5%	502	133	19	38	43
Age Group							
17 & Under	60	0.7%	46	11	1	1	1
18 - 18	102	1.3%	75	18	3	6	2
19 - 19	290	3.6%	231	55	5	22	5
20 - 24	2,378	29.6%	2,075	284	70	140	48
25 - 29	1,589	19.8%	1,382	194	50	90	42
30 - 39	1,625	20.2%	1,379	160	53	81	52
40 - 49	993	12.3%	870	67	19	50	18
50 - 59	756	9.4%	659	32	23	21	35
60 & Over	249	3.1%	214	11	8	8	11
Unknown							
Mean	32.1		32.2	28.4	32.1	29.9	35.3
Median	28.0		28.0	26.0	28.0	26.0	31.0

UAA Summer 2012 Closing Headcount by Student Characteristic by Campus

	UAA Total	% of Total	Anchorage	Kenai Peninsula	Kodiak	Mat-Su	Prince Wm
Region of Origin							
In_State	7,191	89.4%	6,162	753	210	393	190
Out_of_State	622	7.7%	556	71	15	22	21
Foreign	208	2.6%	194	8	5	4	3
Not_Reported	21	0.3%	19		2		
Primary Degree Type							
One Year	46	0.6%	30	2		8	2
Two Year	1,258	15.6%	712	140	33	144	42
Four Year	3,312	41.2%	3,053				
Master Programs	477	5.9%	475				
Licensure/Post Certificate	74	0.9%	72				
Non Degree/Other Program	2,875	35.7%	2,589	690	199	267	170
Attempted Hours							
0 - 2	1,439	17.9%	1,298	31	33	26	84
3 - 5.9	3,518	43.7%	3,157	632	173	252	115
6 - 8.9	1,820	22.6%	1,476	124	23	111	13
9 - 11.9	698	8.7%	554	32	2	14	1
12 - 14.9	441	5.5%	346	11	1	13	1
15 & Over	126	1.6%	100	2		3	

NOTES:

1. Total UAA includes Anchorage, Kenai, Kodiak, Mat-Su, and PWSCC.
2. Headcount includes students enrolled in credit courses at the 050 level and above, including auditors.
3. Percentages may not add to 100 due to rounding.
4. See page 5 for First-time Freshman definition.
5. Other Program=Non UAA or Non Campus Programs
6. Ethnicity may be duplicated for students who identify themselves in multiple ethnicity/race categories. The Total Minority is an unduplicated number therefore, it will not necessarily equal the sum of all categories.

Summer 2012 Closing Anchorage Majors by Student Characteristic by College

	Anchorage Total	% of Total	CAS	CBPP	COH	CTC	COE	SOEN	Gen Ed
Total Headcount	6,931	100.0%	1,315	703	1,110	508	410	296	2,589
Class Standing									
First-time Freshman	92	1.3%	37	6	23	19	2	5	
Freshman	645	9.3%	227	99	160	76	27	56	
Sophomore	779	11.2%	245	122	197	120	43	52	
Junior	738	10.6%	250	146	166	99	28	49	
Senior	1,541	22.2%	494	243	445	189	67	103	
Graduate	475	6.9%	60	87	115	5	177	31	
Post/Licensure	72	1.0%	2		4		66		
Non Degree Seeking	2,007	29.0%							2,007
Other MAU Prog.	582	8.4%							582
Full-time by Gender									
Female	311	4.5%	62	32	160	10	23	3	21
Male	161	2.3%	43	38	30	19	12	9	10
Unspecified									
Total	472	6.8%	105	70	190	29	35	12	31
Part-time by Gender									
Female	4,337	62.6%	770	379	779	188	297	64	1,860
Male	2,107	30.4%	438	254	139	290	78	219	689
Unspecified	15	0.2%	2		2	1		1	9
Total	6,459	93.2%	1,210	633	920	479	375	284	2,558
Ethnicity									
African Am.	386	5.6%	90	50	95	33	10	14	94
Alaska Native	497	7.2%	97	57	76	46	32	26	163
Am. Indian	199	2.9%	50	21	35	17	14	6	56
Asian	591	8.5%	121	103	138	36	28	39	126
Hispanic	412	5.9%	113	41	68	41	17	18	114
Native Hawaiian	119	1.7%	23	16	32	10	6	5	27
Minority Total	2,002	28.9%	432	262	412	167	97	94	538
Non Hisp White	4,905	70.8%	943	461	725	359	323	199	1,895
Race Unknown	131	1.9%	13	1	7	1	4	3	102
Not Reported	502	7.2%	100	55	71	40	20	21	195
Age Group									
17 & Under									
18 - 18	46	0.7%							46
19 - 19	75	1.1%	9		3	2			61
20 - 24	231	3.3%	64	21	37	21	13	20	55
25 - 29	2,075	29.9%	639	302	350	188	79	125	392
30 - 39	1,382	19.9%	306	171	289	133	81	64	338
40 - 49	1,379	19.9%	187	141	257	100	106	70	518
50 - 59	870	12.6%	66	55	112	43	72	14	508
60 & Over	659	9.5%	32	13	58	16	51	2	487
Unknown	214	3.1%	12		4	5	8	1	184
Mean	32.2	0.5%	26.8	27.8	29.9	28.5	34.6	26.9	38.1
Median	28.0	0.4%	24	25	27	26	32	25	37

Summer 2012 Closing Anchorage Majors by Student Characteristic by College

	Anchorage Total	% of Total	CAS	CBPP	COH	CTC	COE	SOEN	Gen Ed
Total Headcount	6,931	100.0%	1,315	703	1,110	508	410	296	2,589
Region of Origin									
In_State	6,162	88.9%	1,132	574	978	444	378	256	2,400
Out_of_State	556	8.0%	157	50	110	56	23	21	139
Foreign	194	2.8%	26	76	20	8	6	19	39
Not_Reported	19	0.3%		3	2		3		11
Primary Degree Type									
One Year	30	0.4%			18	7	4	1	
Two Year	712	10.3%	167	64	284	179	15	3	
Four Year	3,053	44.0%	1,086	552	689	317	148	261	
Master Programs	475	6.9%	60	87	115	5	177	31	
Licensure/Post Certificate	72	1.0%	2		4		66		
Non Degree/Other Program	2,589	37.4%							2,589
Attempted Hours									
0 - 2	1,298	18.7%	41	12	54	25	66	7	1,093
3 - 5.9	3,157	45.5%	635	336	465	230	202	177	1,112
6 - 8.9	1,476	21.3%	382	206	282	150	86	76	294
9 - 11.9	554	8.0%	151	83	118	72	49	22	59
12 - 14.9	346	5.0%	82	51	144	26	7	12	24
15 & Over	100	1.4%	24	15	47	5		2	7

NOTES:

1. Headcount includes students enrolled in credit courses at the 050 level and above, including auditors.
2. Percentages may not add to 100 due to rounding.
3. See page 5 for First-time Freshman definition.

Summer 2012 Closing UAA Students by Primary Majors by Campuses

Primary Major by MAU/Campus		Campuses where Courses Taken				
		Anchorage	Kenai	Kodiak	Mat-Su	Prince Wm
Anchorage Campus						
Accounting	AAS	34	1	5	1	
	BBA	166	13	14	7	4
Advanced Human Service Systems	GCRT	1				
Air Traffic Control	AAS	28	2			
Anthropology	BA	15	3		1	
	BS	13	2		1	
	MA	5				
Appl Environ Science & Techno	MO	3				
	MS	1				
Apprenticeship Technology	AAS	2	1			
Archit & Engr Technology	AAS	8	2			
Architectural Drafting	CT1	1				
Art	BA	30	7		3	1
	BFA	1				
Automotive Technology	AAS	13				
	CT2	2	1			
Aviation Administration	AAS	3				
Aviation Maint - Powerplant	CT2	1				
Aviation Maint Technology	AAS	2				
	CT2	1				
Aviation Technology	BS	92	13	2	7	
Biological Sciences	BA	24	5		1	1
	BS	115	18	3	14	1
	MS	6				
Bookkeeping Support	OEC	1				
Business Administration	MBA	3				
Business Computer Info Systems	AAS	3		1		
Career & Technical Education	MS	5				
Chemistry	BS	23	4		3	
Children's Behavioral Health	OEC	1				
Children's Mental Health	GCRT	2				
Cisco Cert Network Associate	OEC	1				
Civil Drafting	CT1	2				
Civil Engineering	BS	34	7	1	2	
	MS	6				
Clinical Psychology	MS	12				
Clinical Social Work Practice	GCRT	1				
Computer & Networking Tech	AAS	27	1			
	CT2	5				
Computer Info Office Systems	AAS	17	1	1		
Computer Science	BA	14				
	BS	42			2	1
Conflict Resolution	OEC	1				

Summer 2012 Closing UAA Students by Primary Majors by Campuses

Primary Major by MAU/Campus		Campuses where Courses Taken				
		Anchorage	Kenai	Kodiak	Mat-Su	Prince Wm
Anchorage Campus (continued)						
Construction Management	AAS	7	2		1	
	BS	46	8	3	3	
Counselor Education	GCRT	1				
	MED	25				
Creat Writing & Lit Arts	MFA	35				
Culinary Arts	AAS	31	1	2	1	
Dental Assisting	AAS	4				
	CT2	7				
Dental Hygiene	AAS	5				
	BS	9	1			
Dietetics	BS	4				
Dual Language	BA	2			1	
Early Childhood	PBCT	3				
Early Childhood Development	AAS	15	9		2	
	CT1	3				
Early Childhood Education	AAS		1	1		
	BA	65	16		1	
Early Childhood Spec Educ	MED	6				
Economics	BA	23	1	1		
	BBA	14		2		
Education	MAT	35				
Educational Leadership	MED	82	1			1
Elementary Ed (K-6)	PBCT	3				
Elementary Education	BA	82	16	4	5	1
	LIC	3				
Engineering	BS	68	2		4	
Engineering Management	MS	4				
English	BA	60	3	3	3	
	MA	2				
Environment & Society	BA	14	2			1
	BS	9	1			
Environmental Reg & Permitting	GCRT					1
Finance	BBA	56	2	8		
Fire & Emergency Services Tech	AAS	6	1			
General Management	MBA	67		2		
General Program	AA	167	23	2	8	1
Geographic Information Sys	CT1	1				
Geological Science	BS	42	7	1	2	
Geomatics	AAS	3				1
	BS	7	1			
Global Log Supply Chain Mgt	BBA	25	1		1	
Global Logistics Mgmt	BBA	1				
Global Supply Chain Mgmt	MS	1				
Health Sciences	BS	1				

Summer 2012 Closing UAA Students by Primary Majors by Campuses

Primary Major by MAU/Campus		Campuses where Courses Taken				
		Anchorage	Kenai	Kodiak	Mat-Su	Prince Wm
Anchorage Campus (continued)						
Heavy Duty Trans & Equip	AAS	3				
History	BA	50	1	1	10	
Hospitality Restaurant Mgt	BA	19	2			
Human Services	AAS	43	6			3
	BHS	18	2		1	
Inactivated Program	NDS	6	1			1
International Studies	BA	41	3	1		1
Journalism & Public Comm	BA	53	3		3	2
Justice	BA	88	20			1
Languages	BA	29	2	1	2	1
Liberal Studies	BLS	5				
Logistics	OEC		1			
Logistics & Supply Chain Ops	AAS	2	1	1		
Management	BBA	176	15	15	1	
Management Information Systems	BBA	31		4		1
Marketing	BBA	50	4	2	2	
Master Teacher	MED	9				
Mathematics	BA	3		1		
	BS	26	2	1	1	
Mech & Elect Drafting	CT1				1	
Medical Assisting	AAS	18	2			
Medical Lab Technology	AAS	1			1	
Medical Office Coding	OEC	8				
Medical Technology	BS	46	9	1	2	
Music	BA	2				
Music Performance	BM	5	1			
Music, Music Education Emphasi	BM	6				
Natural Sciences	BS	78	15	1	4	1
Non-Degree Seeking	NDS	1,924	70	13	20	22
Nursing	AAS	11	4			
Nursing Science	BS	195	1			
	MS	33				
Nutrition	BS	17	5		1	1
Office Foundations	OEC	1		1		
Paralegal Studies	CT2	1				
Pending Degree Seeking	PDS	76	9		7	1
Pharmacy Technology	OEC	1	1			
Philosophy	BA	16	1			
Phlebotomist	OEC	7				
Physical Education	BS	66	5		2	
Political Science	BA	44	5		1	3
Pre-Major Accounting	BBA	1				
Pre-Major Civil Engineering	BS	32	4	1	3	2
Pre-Major Dental Assisting	AAS	2				

Summer 2012 Closing UAA Students by Primary Majors by Campuses

Primary Major by MAU/Campus		Campuses where Courses Taken				
		Anchorage	Kenai	Kodiak	Mat-Su	Prince Wm
Anchorage Campus (continued)						
Pre-Major Dental Hygiene	AAS	13	4	1		1
	BS	8	4	1	1	
Pre-Major Dietetics	BS	35	3		3	
Pre-Major Finance	BBA	2				
Pre-Major Fine Arts	BFA	11			2	1
Pre-Major Health Science (BS)	BS	10	2	1	1	
Pre-Major Human Services	BHS	3				
Pre-Major Management	BBA	5			2	
Pre-Major Marketing	BBA	1				
Pre-Major Medical Assisting	AAS	15	1			1
Pre-Major Medical Lab Tech	AAS	4	2			
Pre-Major Music	BA	3				
Pre-Major Music Performance	BM	6				
Pre-Major Music, Music Educ Em	BM	3				
Pre-Major Nursing	AAS	112	33	2	9	3
Pre-Major Nursing Science	BS	254	60	6	25	1
Pre-Major Paralegal Studies	CT2	6				
Pre-Major Social Work	BSW	35	4		1	
Pre-Major Technology	BS	20	2		1	
Pre-major Economics	BA	1		1		
Pre-major Elementary Education	BA	1				
Pre-major Engineering	BS	64	6		3	
Premajor Radiologic Technology	AAS	26	2		2	
Principal	GCRT	19				
	LIC	1				
Principal (K-8, 7-12)	LIC	1				
Professional Piloting	AAS	13	1			
Project Management	MS	17	1			
Psychia & Mentl Hlth Nur Pract	GCRT	1				
Psychology	BA	147	13	2	11	1
	BS	48	3	1	1	
Public Administration	MPA	16				
Public Health Practice	MPH	33				
Radiologic Technology	AAS	10				
Reading Specialist	EDE	2				
School-Age Care: Practitioner	OEC	1				
Small Business Administration	AAS	25	2	1		
Social Work	BSW	22				
	MSW	49				
Social Work Management	GCRT	1				
Sociology	BA	15		1	2	
	BS	1				
Special Education	GCRT	29	1			

Summer 2012 Closing UAA Students by Primary Majors by Campuses

Primary Major by MAU/Campus		Campuses where Courses Taken				
		Anchorage	Kenai	Kodiak	Mat-Su	Prince Wm
Anchorage Campus (continued)						
	MED	11				
Superintendent	GCRT	2				
Teach Cred-Spe Ed	NDS	1				
Teaching	MAT	1				
Teaching and Learning	MED	8				
Technical Support	OEC	1				
Technology	BS	18	1		1	
Telecomm Elect & Computer Tech	AAS	9	1			
Theatre	BA	11	1		1	
Undeclared	BA	135	18	2	6	1
Weld & NonDestruct Test Tech	AAS	7	1			
e-Learning	GCRT	2				
Total		6,349	541	119	208	63
Kenai Peninsula College						
Computer Electronics	AAS	1	1			
Computer Info Office Systems	AAS	1	1		1	
Corrections	CT1		2			
Digital Art	AAS	4	3			
General Business	AAS	1	9	1		
General Program	AA	21	43	2		2
Industrial Proc Instrumentatn	AAS	1	6			
Non-Degree Seeking	NDS	17	84	1		2
Occupational Safety & Health	AAS	6	15		2	
Paramedical Tech	AAS		7			
Pending Degree Seeking	PDS		4			
Pre-major Paramedical Tech	AAS		2			
Process Technology	AAS	13	53	6	4	
Welding Technology	CT2	1				
Total		66	230	10	7	4
Kodiak College						
Accounting	AAS			4		
Computer Info Office Systems	AAS	1	1	1		
Computer Systems Technology	AAS			1		
General Business	AAS	1		2		
General Program	AA	6	4	20	1	3
Non-Degree Seeking	NDS	6		46		
Technology	AAS		3	5	1	
Total		14	8	79	2	3

Summer 2012 Closing UAA Students by Primary Majors by Campuses

Primary Major by MAU/Campus		Campuses where Courses Taken				
		Anchorage	Kenai	Kodiak	Mat-Su	Prince Wm
Mat-Su College						
Accounting	AAS	2	1		9	1
Archit & Engr Technology	AAS	2			5	
Cisco Cert Network Associate	OEC				2	
Computer Info Office Systems	AAS		2	1	3	
Computer Systems Technology	AAS	2			7	
General Business	AAS		1	1	3	
General Program	AA	31	11	2	73	
Human Services	AAS	8	5	1	18	
Non-Degree Seeking	NDS	28	4		43	
Office Support	OEC				1	
Paramedical Tech	AAS	1	1		13	
Pending Degree Seeking	PDS	2	1		2	
Pre-major Paramedical Tech	AAS	4	4		5	1
Refrig & Heat Technology	AAS		1		3	
	CT2				1	
Small Business Administration	AAS	2			4	
Telecomm Elect & Computer Tech	AAS	1				
Veterinary Assisting	OEC				5	
Total		83	31	5	197	2
Prince William Sound CC						
Computer Info Office Systems	AAS					1
Direct Services Specialist	OEC					2
Disability Services	AAS	1				11
General Program	AA	3				26
Industrial Technology	AAS					2
	CT2					1
Non-Degree Seeking	NDS	6				56
Outdoor Leadership	AAS					1
Playwriting	AFA					1
Total		10				101
UAF Majors						
Accounting	BBA					2
Art	BA	1				
Associate of Science	AS		1			
Biological Sciences	BA	1				
	BS	2		1		
Business Administration	BBA	3		2		1
Child Develop & Family Studies	BA	2				
Clinical-Community Psychology	PHD	13				
Communication	BA	1				
Community Health	AAS	1				
Construction Trades Technology	AAS					1

Summer 2012 Closing UAA Students by Primary Majors by Campuses

Primary Major by MAU/Campus		Campuses where Courses Taken				
		Anchorage	Kenai	Kodiak	Mat-Su	Prince Wm
UAF Majors (continued)						
Education	MED	6				
Electrical Engineering	BS					1
Elementary Education	BA	3			1	
Emergency Management	BEM	1				
Emergency Services	AAS	2	2			
General Program	AA	2				1
General Studies	BA	1				
History	BA	2	1			
Information Technology Special	AAS	1				
Japanese Studies	BA					1
Journalism	BA	1				
Justice	BA	1				
Mathematics	BS	1				
Mechanical Engineering	BS	2		1		
Mining Engineering	BS	1				
Music	BA	1				
	BM	1				
Natural Resources Management	BS	1				
Non-Degree Secondary Student	NDS	3	1			
Non-Degree Seeking	NDS	130	4	4		7
Petroleum Engineering	BS	5				
	MS	1				
Philosophy	BA	1				
Post-Bacc K-12 Spec Ed Lic Prg	GLI	2				
Pre - General Studies	BI				1	
Pre-Nursing Qualifications	CT2	1	1			1
Premajor - Child Devl & Fam St	BI	1				
Premajor - Civil Engineering	BI				1	
Premajor - Computer Science	BI	1				
Premajor - Geology	BI	1				
Psychology	BA	1				
Rural Development	BA	1				
Social Work	BA	3				
Sociology	BA	1				
Teach Cred-Sec Ed	ULC			1		
Total		203	10	9	3	15

Summer 2012 Closing UAA Students by Primary Majors by Campuses

Primary Major by MAU/Campus		Campuses where Courses Taken				
		Anchorage	Kenai	Kodiak	Mat-Su	Prince Wm
UAS Majors						
Biology	BA	1				
Business Administration	AAS					3
	AB		1			1
	BBA	9	3	5	1	5
Communication	BLA	1				
Early Childhood Education	AAS		1			
	MED					1
Ed Cert - Mathematics K-8	GLI	3				
Ed Cert - Special Education	GLI	1				
UAS Majors (continued)						
Education	MAT	8	1			
Educational Technology	EDE	2				
Elementary Education	MAT				1	
General Program	AA	1				2
Geography & Environ Resources	BS			1		
Health Info Mgt Coding Spec	CT2		1			
Health Information Mgt	AAS					1
Health Science	AAS	1				
Interdisciplinary Studies	BLA	3				
Mathematics Education	MED	7				
Non-Degree Seeking	NDS	142	2	3		8
Nursing	CT1	4	2			2
Pre-Major Biology	BS	1	1			1
Pre-Major Marine Biology	BS	1				1
Pre-major Biology	BA					1
Public Administration	MPA	1				
Reading Specialist	MED	11				
Secondary Education	MAT	1				
Service Management	MBA	1				
Social Science	BA	2				
Special Education	MED	5		1		
Total		206	12	10	2	26
UAA MAU Total		6,931	832	232	419	214

UAA Summer 2012 Closing Student Credit Hours by Characteristic by Campus

	UAA Total	% of Total	Anchorage	Kenai Peninsula	Kodiak	Mat-Su	Prince Wm
Total Headcount	38,630	100.0%	32,196	3,237	733	1,912	552
Class Standing							
First-time Freshman	652	1.7%	549	46		39	18
Freshman	4,217	10.9%	3,582	261	30	273	71
Sophomore	4,705	12.2%	4,103	199	50	315	38
Junior	4,545	11.8%	4,322	87	47	62	27
Senior	9,976	25.8%	9,618	158	15	175	10
Graduate	1,918	5.0%	1,918				
Post/Licensure	262	0.7%	262				
Non Degree Seeking	6,853	17.7%	6,217	305	98	173	60
Other MAU Prog.	5,503	14.2%	1,625	2,181	493	875	329
Full-time by Gender							
Female	4,152	10.7%	4,053	27		72	
Male	2,378	6.2%	2,050	147	12	157	12
Unspecified							
Total	6,530	16.9%	6,103	174	12	229	12
Part-time by Gender							
Female	20,552	53.2%	16,730	1,998	523	936	366
Male	11,475	29.7%	9,308	1,052	198	747	171
Unspecified	73	0.2%	56	13			4
Total	32,100	83.1%	26,093	3,063	721	1,683	540
Ethnicity							
African Am.	2,234	5.8%	2,031	115	16	63	9
Alaska Native	2,881	7.5%	2,411	232	82	108	48
Am. Indian	1,219	3.2%	997	76	12	121	13
Asian	3,661	9.5%	3,323	154	103	63	18
Hispanic	2,594	6.7%	2,223	212	49	88	22
Native Hawaiian	788	2.0%	703	43	30	12	
Minority Total	12,100	31.3%	10,580	756	268	399	97
Non Hisp White	26,235	67.9%	21,907	2,116	480	1,431	301
Race Unknown	497	1.3%	404	29	3	29	32
Not Reported	3,524	9.1%	2,552	595	63	179	135
Age Group							
17 & Under	255	0.7%	205	41	4	4	1
18 - 18	442	1.1%	328	67	14	25	8
19 - 19	1,464	3.8%	1,121	223	16	90	14
20 - 24	13,638	35.3%	11,522	1,136	227	613	140
25 - 29	9,083	23.5%	7,549	761	183	466	125
30 - 39	7,787	20.2%	6,470	619	158	387	153
40 - 49	3,423	8.9%	2,840	267	57	216	44
50 - 59	1,989	5.1%	1,689	104	58	81	57
60 & Over	550	1.4%	473	19	16	30	12
Unknown							

UAA Summer 2012 Closing Student Credit Hours by Characteristic by Campus

	UAA Total	% of Total	Anchorage	Kenai Peninsula	Kodiak	Mat-Su	Prince Wm
Region of Origin							
In_State	33,832	87.6%	27,986	2,906	660	1,803	478
Out_of_State	3,462	9.0%	2,954	305	50	95	58
Foreign	1,261	3.3%	1,191	26	14	14	16
Not_Reported	75	0.2%	66		9		
Primary Degree Type							
One Year	140	0.4%	95	9		31	5
Two Year	5,604	14.5%	3,734	742	142	833	153
Four Year	18,346	47.5%	18,346				
Master Programs	1,918	5.0%	1,918				
Licensure/Post Certificate	262	0.7%	262				
Non Degree/Other Program	12,361	32.0%	7,842	2,486	591	1,048	394
Attempted Hours							
0 - 2	2,028	5.2%	1,840	31	45	34	78
3 - 5.9	13,835	35.8%	10,150	1,974	520	820	371
6 - 8.9	10,826	28.0%	9,149	762	138	695	82
9 - 11.9	5,650	14.6%	5,193	296	18	134	9
12 - 14.9	4,633	12.0%	4,317	135	12	157	12
15 & Over	1,659	4.3%	1,548	39		72	

NOTES:

1. Total UAA includes Anchorage, Kenai, Kodiak, Mat-Su, and PWSCC.
2. SCH=Student Credit Hours which excludes audit hours.
3. Percentages may not add to 100 due to rounding.
4. See page 5 for First-time Freshman definition.
5. Other Program=Non UAA or Non Campus Programs
6. Ethnicity may be duplicated for students who identify themselves in multiple ethnicity/race categories. The Total Minority is an unduplicated number therefore, it will not necessarily equal the sum of all categories.

UAA Summer 2012 Closing Student FTE by Characteristic by Campus

	UAA Total	% of Total	Anchorage	Kenai Peninsula	Kodiak	Mat-Su	Prince Wm
Total Headcount	2,671	100.0%	2,240	217	50	128	37
Class Standing							
First-time Freshman	44	1.6%	37	3		3	1
Freshman	281	10.5%	239	17	2	18	5
Sophomore	314	11.7%	274	13	3	21	3
Junior	303	11.3%	288	6	3	4	2
Senior	666	24.9%	642	11	1	12	1
Graduate	157	5.9%	157				
Post/Licensure	21	0.8%	21				
Non Degree Seeking	505	18.9%	460	21	7	12	4
Other MAU Prog.	380	14.2%	121	146	33	58	22
Full-time by Gender							
Female	279	10.5%	273	2		5	
Male	160	6.0%	138	10	1	11	1
Unspecified							
Total	439	16.5%	411	12	1	15	1
Part-time by Gender							
Female	1,443	54.0%	1,186	134	36	62	25
Male	784	29.3%	639	70	13	50	12
Unspecified	5	0.2%	4	1			0
Total	2,232	83.6%	1,829	205	49	112	36
Ethnicity							
African Am.	152	5.7%	138	8	1	4	1
Alaska Native	194	7.3%	163	15	6	7	3
Am. Indian	83	3.1%	68	5	1	8	1
Asian	247	9.2%	225	10	7	4	1
Hispanic	176	6.6%	151	14	3	6	2
Native Hawaiian	53	2.0%	47	3	2	1	
Minority Total	820	30.7%	718	50	18	27	7
Non Hisp White	1,824	68.3%	1,534	142	33	95	20
Race Unknown	37	1.4%	31	2	0	2	2
Not Reported	241	9.0%	176	40	4	12	9
Age Group							
17 & Under	17	0.6%	14	3	0	0	0
18 - 18	30	1.1%	22	5	1	2	1
19 - 19	98	3.7%	75	15	1	6	1
20 - 24	912	34.2%	771	76	15	41	9
25 - 29	622	23.3%	520	51	12	31	8
30 - 39	547	20.5%	459	41	11	26	10
40 - 49	250	9.4%	211	18	4	14	3
50 - 59	152	5.7%	132	7	4	5	4
60 & Over	43	1.6%	38	1	1	2	1
Unknown							

UAA Summer 2012 Closing Student FTE by Characteristic by Campus

	UAA Total	% of Total	Anchorage	Kenai Peninsula	Kodiak	Mat-Su	Prince Wm
Region of Origin	2,342		1,950	195	45	120	32
In_State	238	8.9%	204	20	3	6	4
Out_of_State	86	3.2%	81	2	1	1	1
Foreign	5	0.2%	5		1		
Not_Reported							
Primary Degree Type	10		7	1		2	0
One Year	374	14.0%	249	50	10	56	10
Two Year	1,224	45.8%	1,224				
Four Year	157	5.9%	157				
Master Programs	21	0.8%	21				
Licensure/Post Certificate	885	33.1%	581	167	41	70	27
Not Declared/Other							
Attempted Hours	164		150	2	4	2	6
0 - 2	968	36.2%	720	133	35	55	25
3 - 5.9	739	27.7%	627	51	9	46	6
6 - 8.9	381	14.3%	351	20	1	9	1
9 - 11.9	309	11.6%	288	9	1	11	1
12 - 14.9	111	4.1%	103	3		5	
15 & Over	2,671	100.0%	2,240	217	49.9	127.5	37.2

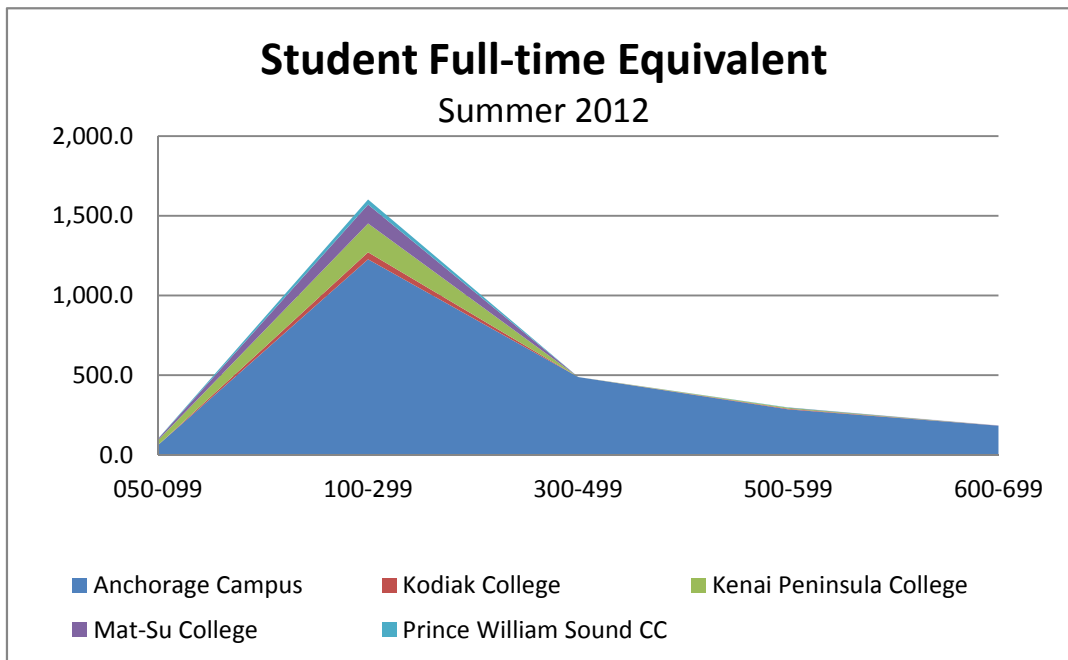
NOTES:

1. Total UAA includes Anchorage, Kenai, Kodiak, Mat-Su, and PWSCC.
2. FTE=Full-time equivalent which is calculated by dividing Student Credit Hours by 15 for undergraduate students and 12 for graduate students.
3. Percentages may not add to 100 due to rounding.
4. See page 5 for First-time Freshman definition.
5. Other Program=Non UAA or Non Campus Programs
6. Ethnicity may be duplicated for students who identify themselves in multiple ethnicity/race categories. The Total Minority is an unduplicated number therefore, it will not necessarily equal the sum of all categories.

UAA Summer 2012 Closing Student FTE by Campus and by Course Level

	050-099	100-299	300-499	500-599	600-699	Total
UAA Total	100.5	1,603.3	488.4	297.3	181.6	2,671.1
Anchorage Campus	59.8	1,226.3	487.8	284.0	181.6	2,239.5
Kodiak College		44.3	0.4	5.3		49.9
Kenai Peninsula College	29.6	181.4	0.2	5.8		216.9
Mat-Su College	8.3	119.1				127.5
Prince William Sound CC	2.8	32.2		2.3		37.2

Note: FTE=Full-time equivalent which is calculated by dividing Student Credit Hours by 15 for undergraduate students and 12 for graduate students.



UAA Summer 2012 Closing SCH by Discipline and Course Level by Campus

	Course Level					Total
	050-099	100-299	300-499	500-599	600-699	
Anchorage Campus						
AK Native Studies			1.0			1.0
Accounting		309.0	54.0		48.0	411.0
Air Traffic Control		60.0				60.0
Amer Sign Lang		192.0				192.0
Anthropology		498.0	10.0		9.0	517.0
Arch Engineer Tech		3.0				3.0
Art		648.0	15.0	159.0		822.0
Auto-Diesel Tech		10.0				10.0
Aviation Tech/Admin/Mgt		183.0	12.0			195.0
Aviation/Prof Piloting		72.5	8.0			80.5
Biology		932.0	43.0		4.0	979.0
Business Admin		750.0	1,020.0		188.0	1,958.0
Career & Technical Ed				129.0	9.0	138.0
Chemistry	114.0	151.0	9.0			274.0
Civic Engage & Learn			15.0			15.0
Civil Engineer			3.0		15.0	18.0
Communication		837.0	75.0			912.0
Computer Info Sys		111.0				111.0
Computer Netwk Tech		161.0				161.0
Computer Office Sys		107.0				107.0
Computer Sci		150.0				150.0
Computer Sys Engineer			3.0			3.0
Construction Management		3.0	33.0			36.0
Creat Write-Lit Arts		45.0			175.0	220.0
Culinary Arts		25.0	35.0			60.0
Dance		48.0				48.0
Dental Assist		30.0				30.0
Dental Hygiene			27.0			27.0
Dietetic & Nutrit		645.0	54.0			699.0
ED: Counselor ED					78.0	78.0
ED: Early Childhood		132.0				132.0
Economics		666.0	81.0	22.0		769.0
Educ Dvlp & Leader				235.0	294.0	529.0
Educ: Foundations		12.0	212.0		197.0	421.0
Educ: PE				33.0		33.0
Educ: Special Educ		18.0	69.0	258.0	160.0	505.0
Education				2,446.0		2,446.0
Education: Research					182.0	182.0
Elect Engineer			18.0			18.0
Engin Sci Mgmt					15.0	15.0
Engineering		33.0				33.0
Engineering Sci			3.0			3.0

UAA Summer 2012 Closing SCH by Discipline and Course Level by Campus

	Course Level					Total
	050-099	100-299	300-499	500-599	600-699	
Anchorage Campus (continued)						
English		2,193.0	106.0		3.0	2,302.0
English 2nd Lang		432.0				432.0
Environ Studies		96.0				96.0
Environm Sci & Tech					3.0	3.0
Extend Register-CAS					0.0	0.0
Extend Register-CBPP					0.0	0.0
Extend Register-Engin					0.0	0.0
Geography		324.0				324.0
Geology		190.0	144.0			334.0
Geomatics			18.0			18.0
German		56.0				56.0
Guidance		72.0				72.0
Health Sci			9.0		168.0	177.0
History		936.0	216.0	7.0		1,159.0
Honors		6.0	9.0			15.0
Human Services		66.0	48.0		9.0	123.0
Interdisp Studies		16.0				16.0
Internatl Studies		27.0				27.0
Japanese		112.0	3.0			115.0
Journal & Public Comm			17.0			17.0
Justice		30.0	80.0			110.0
Library Sci		3.0		11.0		14.0
Logistics			18.0			18.0
Mathematics	666.0	1,722.0	138.0			2,526.0
Medical Assist		172.0	30.0			202.0
Medical Lab Tech		63.0	228.0			291.0
Music		262.0				262.0
Natn'l Stu Exchange		3.0				3.0
Nursing		8.0				8.0
Nursing Sci		296.0	2,076.5		165.0	2,537.5
PE & Recreation		75.0				75.0
Philosophy		1,065.0	426.0			1,491.0
Physic Ed Prof		102.0	189.0	1.0		292.0
Physical Educ				81.0		81.0
Physics		193.0				193.0
Political Sci		375.0	291.0			666.0
Prep English	117.0	309.0				426.0
Project Management				26.0	52.0	78.0
Psychology		1,101.0	909.0		131.0	2,141.0
Public Admin					63.0	63.0
Radiologic Tech		114.0				114.0
Russian		44.0				44.0
Social Work		57.0	117.0		211.0	385.0
Sociology		315.0	135.0			450.0

UAA Summer 2012 Closing SCH by Discipline and Course Level by Campus

	Course Level					Total
	050-099	100-299	300-499	500-599	600-699	
Anchorage Campus (continued)						
Spanish		180.0				180.0
Statistics		389.0	47.0			436.0
Technology			47.0			47.0
Theater			168.0			168.0
Women's Studies		159.0	48.0			207.0
Total	897.0	18,394.5	7,317.5	3,408.0	2,179.0	32,196.0
Kenai Peninsula College						
Anthropology		2.0				2.0
Art		75.0				75.0
Biology		93.0				93.0
Chemistry	51.0	357.0				408.0
Commun Educ		7.0				7.0
Communication		87.0				87.0
Creat Write-Lit Arts		24.0	3.0			27.0
Dietetic & Nutrit		60.0				60.0
Early Child Dvlp				69.0		69.0
English		330.0				330.0
History		219.0				219.0
Human Services		12.0				12.0
Justice		156.0				156.0
Mathematics	360.0	374.0				734.0
Music		165.0				165.0
PE & Recreation		2.0				2.0
Paramedical Tech		120.0				120.0
Philosophy		42.0				42.0
Prep English	33.0	126.0				159.0
Process Tech		154.0				154.0
Psychology		75.0				75.0
Sociology		18.0				18.0
Statistics		172.0				172.0
Technology		51.0				51.0
Total	444.0	2,721.0	3.0	69.0		3,237.0

UAA Summer 2012 Closing SCH by Discipline and Course Level by Campus

	Course Level					Total
	050-099	100-299	300-499	500-599	600-699	
Kodiak College						
Accounting		69.0				69.0
Anthropology			6.0			6.0
Biology		8.0				8.0
Business Admin		186.0				186.0
Computer Info Sys		48.0				48.0
Computer Netwk Tech		7.0				7.0
Computer Office Sys		27.0				27.0
Dietetic & Nutrit		30.0				30.0
Economics		108.0				108.0
Education				63.0		63.0
English		111.0				111.0
Humanities		24.0				24.0
Psychology		42.0				42.0
Technology		4.0				4.0
Total		664.0	6.0	63.0		733.0
Mat-Su College						
Accounting		15.0				15.0
Anthropology		81.0				81.0
Art		8.0				8.0
Biology		160.0				160.0
Business Admin		81.0				81.0
Chemistry	35.0	106.0				141.0
Communication		87.0				87.0
Computer Office Sys		73.0				73.0
Creat Write-Lit Arts		21.0				21.0
Emerg Medical Tech		42.0				42.0
English		198.0				198.0
Geology		16.0				16.0
History		291.0				291.0
Mathematics	90.0	214.0				304.0
Paramedical Tech		216.0				216.0
Philosophy		69.0				69.0
Physics		67.0				67.0
Psychology		30.0				30.0
Veterinary Assisting		12.0				12.0
Total	125.0	1,787.0				1,912.0

UAA Summer 2012 Closing SCH by Discipline and Course Level by Campus

	Course Level					Total
	050-099	100-299	300-499	500-599	600-699	
Prince William Sound CC						
Biology		22.0				22.0
Communication		54.0				54.0
Computer Office Sys		38.0				38.0
Education				27.0		27.0
Emerg Medical Tech		3.0				3.0
English		39.0				39.0
Health Sci	8.5					8.5
Human Services		12.0				12.0
Industrial Tech	9.0	14.0				23.0
Mathematics	24.0	114.0				138.0
Medical Assist		27.0				27.0
Outdoor Studies		4.0				4.0
Psychology		135.0				135.0
Theater		21.0				21.0
Total	41.5	483.0		27.0		551.5
UAA MAU Total	1,507.5	24,049.5	7,326.5	3,567.0	2,179.0	38,629.5

Note:

SCH=Student Credit Hours which excludes audit hours.